



Spare Parts Diagram

To order spare parts, please use diagram and part #s below:

Figure 1 – Spare Parts Diagram Overview

Figure 3 – Heating / Cooling Blocks

Figure 5 – Gears

Figure 7 – Conveyor Table

Figure 9 – Motor / Turbocase

Figure 10 – Sealer Body

Figure 12 – Umbrella Gear (only in CBS-880II units)

Last Update: 5/4/16

CBS-880 SPARE PARTS DIAGRAM

CBS-880 SPARE PARTS DIAGRAM

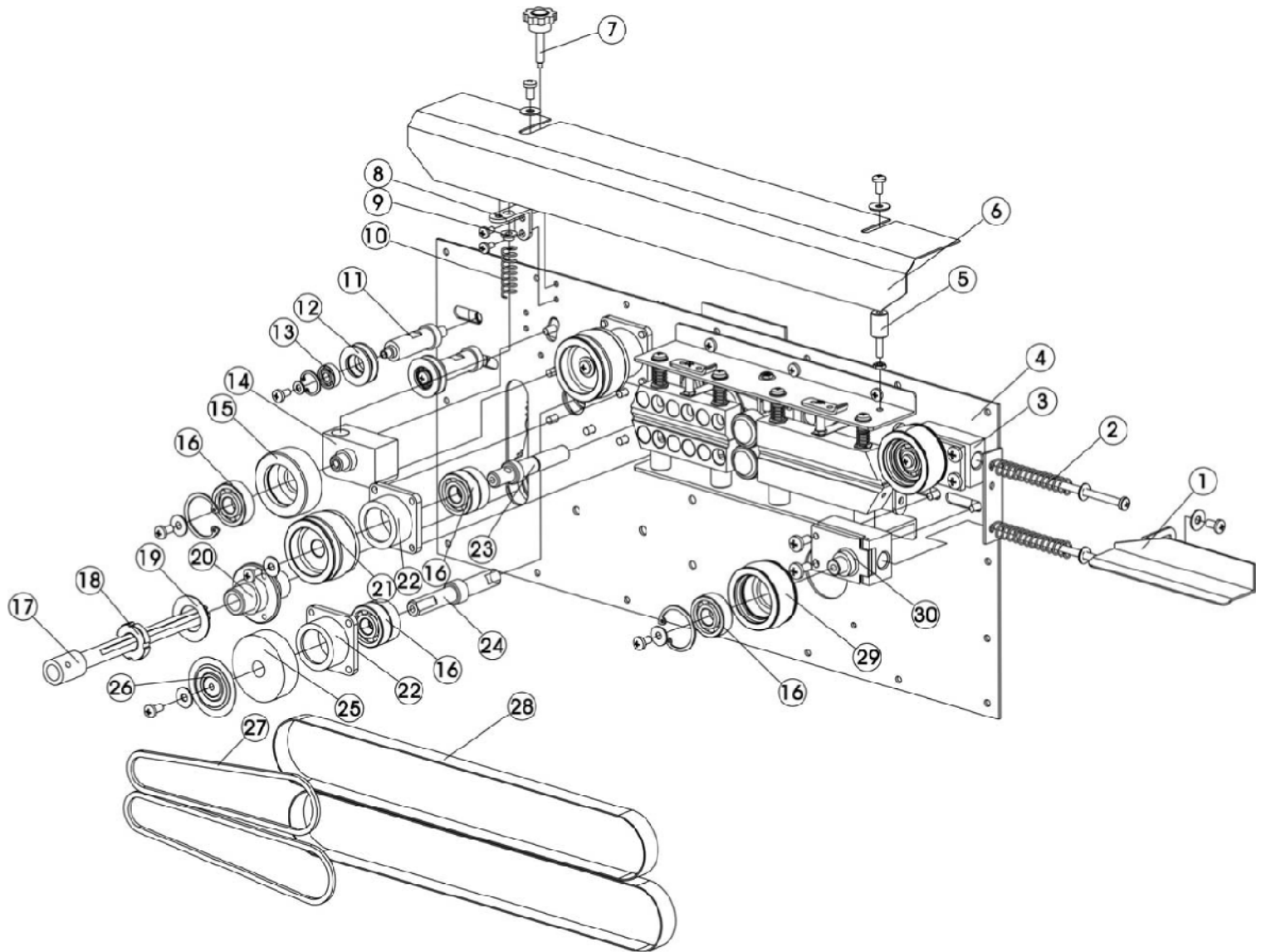


Figure 1. Spare Parts Diagram Overview

CBS-880 SPARE PARTS DIAGRAM

Figure 2. Spare Parts Diagram Overview

Item	Part #	Quantity	Description	Comments
1	CBS-880-44	1	feed opening	
2	CBS-880-13A	2	spring for driven wheel seat	
3	CBS-880-13	1	upper driven wheel seat	
4	CBS-880-84	1	bottom board	steel: 102102-3
5	CBS-880-8-5	1	support for safety cover	
6	CBS-880-7	1	safety cover	
7	BS-5	1	672 corrugated knob (M8X35)	
8	BS-5B	1	supporting board for adjusting embossing roller	
9	BS-5C	1	spring seat of embossing roller	
10	BS-5A	1	spring of embossing roller	
11	CBS-880-6B	2	small pulley shaft	
12	CBS-880-6A	2	small pulley	Includes #12, #13
13	CBS-880-6A	2	606-2Z bearing	Includes #12, #13
14	CBS-880-4	1	embossing roller seat	
15	CBS-880-3	1	embossing roller w/ cavities for types	Includes #15, #16
15	CBS-880-3A	1	embossing roller, knurled wheel / meshed	Includes #15, #16
16	CBS-880-6-26	9	6201-Z bearing	
17	CBS-880-40	1	drive shaft	
18	CBS-880-42	1	round nut	Includes #18, #19
19	CBS-880-42	1	big washer	Includes #18, #19
20	CBS-880-42a	1	connection shaft	
21	CBS-880-6	2	driving wheel	
22	CBS-880-6-27A	3	square bearing seat	
23	CBS-880-6-25	2	driving wheel shaft	
24	CBS-880-2-31	1	silicone wheel shaft	
25	CBS-880-2	1	silicone wheel	
26	CBS-880-2-33	1	silicone wheel cover	
27	CBS-880-26	2	guiding belt	428X6X4(40)
28	CBS-880-10	2	sealing belt	770X15X0.2
29	CBS-880-12	2	driven wheel	
30	CBS-880-13	1	bottom driven wheel seat	

CBS-880 SPARE PARTS DIAGRAM

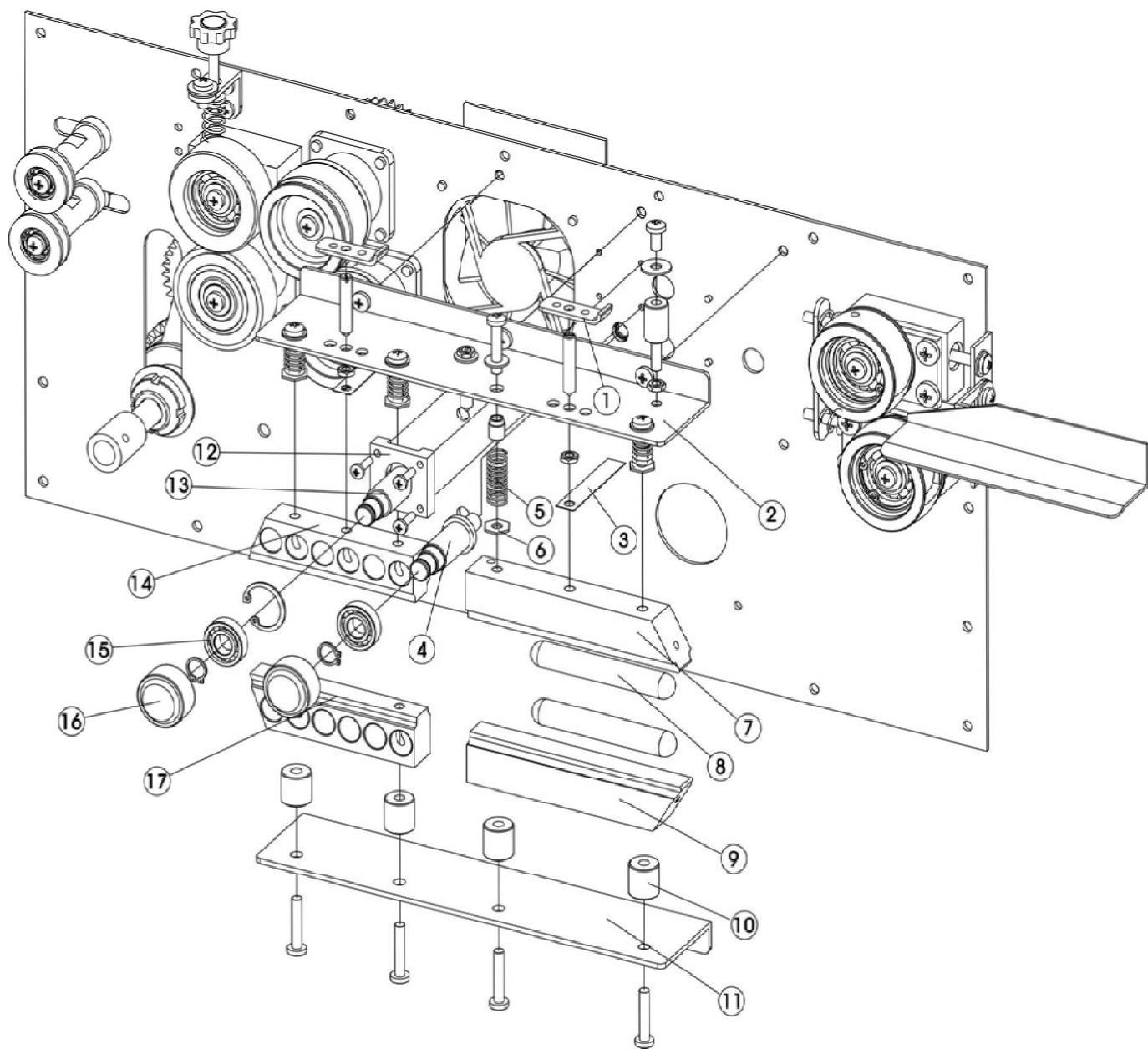


Figure 3. Heating / Cooling Blocks

Figure 4. Heating / Cooling Blocks

Item	Part #	Quantity	Description	Comments
1	BS-9I	2	stopping flake	
2	CBS-880-9-2	1	upper holding plate	
3	BS-9J	2	hanger plate of copper block	
4	CBS-880-21-19	1	lower pressing wheel shaft	
5	BS-9D	4	spring for copper block	
6	BS-9F	4	self-made hexagon thin nut	
7	CBS-880-9A	1	upper heating block (770)	Includes #7, #9
8	BS-9B	2	300W/110V(Φ12X95) heating pipe for sealing	
9	CBS-880-9A	1	bottom heating block (770)	
10	CBS-880-9-10	4	copper block cushion	
11	CBS-880-9-11	1	bottom holding plate	
12	CBS-880-21-23	1	slide seat for pressing wheel	
13	CBS-880-21-24	1	upper pressing wheel shaft	
14	CBS-880-8	1	upper cooling block	Includes #14, #17
15	CBS-880-21	2	61900-2Z bearing	Includes #15, #16
16	CBS-880-21	2	pressing wheel / pinch roller	Includes #15, #16
17	CBS-880-8	1	bottom cooling block	Includes #14, #17
	CBS-880-21uppercomplete		upper pressing wheel shaft assembly	Includes #12-13, 15-16
	CBS-880-21lowercomplete		lower pressing wheel shaft assembly	Includes #4, 15-16

CBS-880 SPARE PARTS DIAGRAM

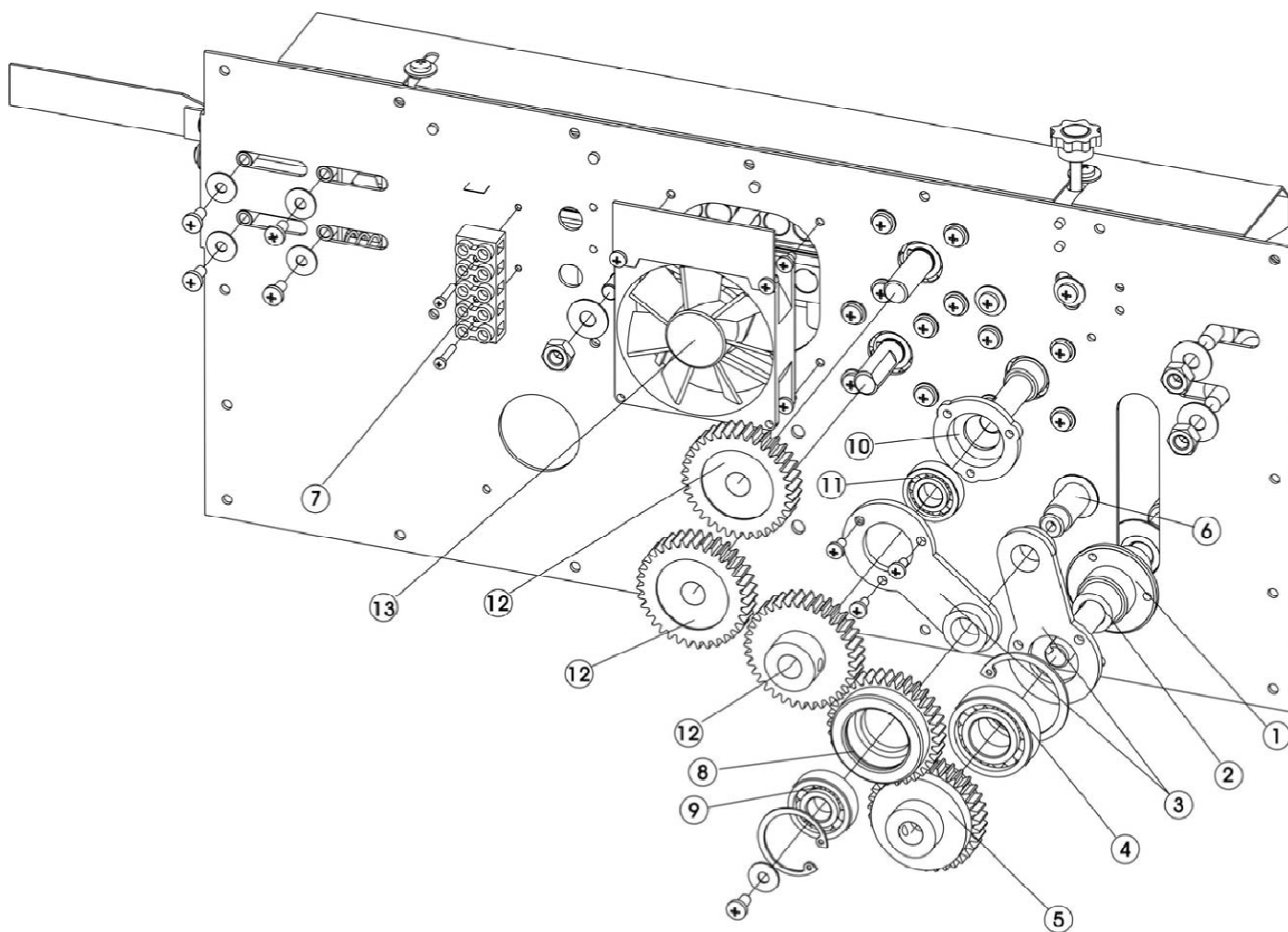


Figure 5. Gears

Figure 6. Gears

Item	Part #	Quantity	Description	Comments
1	CBS-880-42a	connection shaft	1	
2	CBS-880-40	transmission shaft	1	
3	BS-35A	connection board II	1	Includes #3-6,#8-11
4	BS-35A	6004-2Z bearing	1	Includes #3-6,#8-11
5	BS-35A / BS-35A-1	steel gear	1	Includes #3-6,#8-11
6	BS-35A	gear shaft	1	Includes #3-6,#8-11
7	BS-33B	10 pin wiring terminal(orange)	1	
8	BS-35A	middle gear	1	Includes #3-6,#8-11
9	BS-35A	6201-Z bearing	1	Includes #3-6,#8-11
10	BS-35A	bearing seat(three-hole)	1	Includes #3-6,#8-11
11	BS-35A	6001-2Z bearing	1	Includes #3-6,#8-11
12b	BS-35B	driven gear	1	
12c	BS-35C	driven gear	2	
13	CBS-880-32	axial fan	1	

CBS-880 SPARE PARTS DIAGRAM

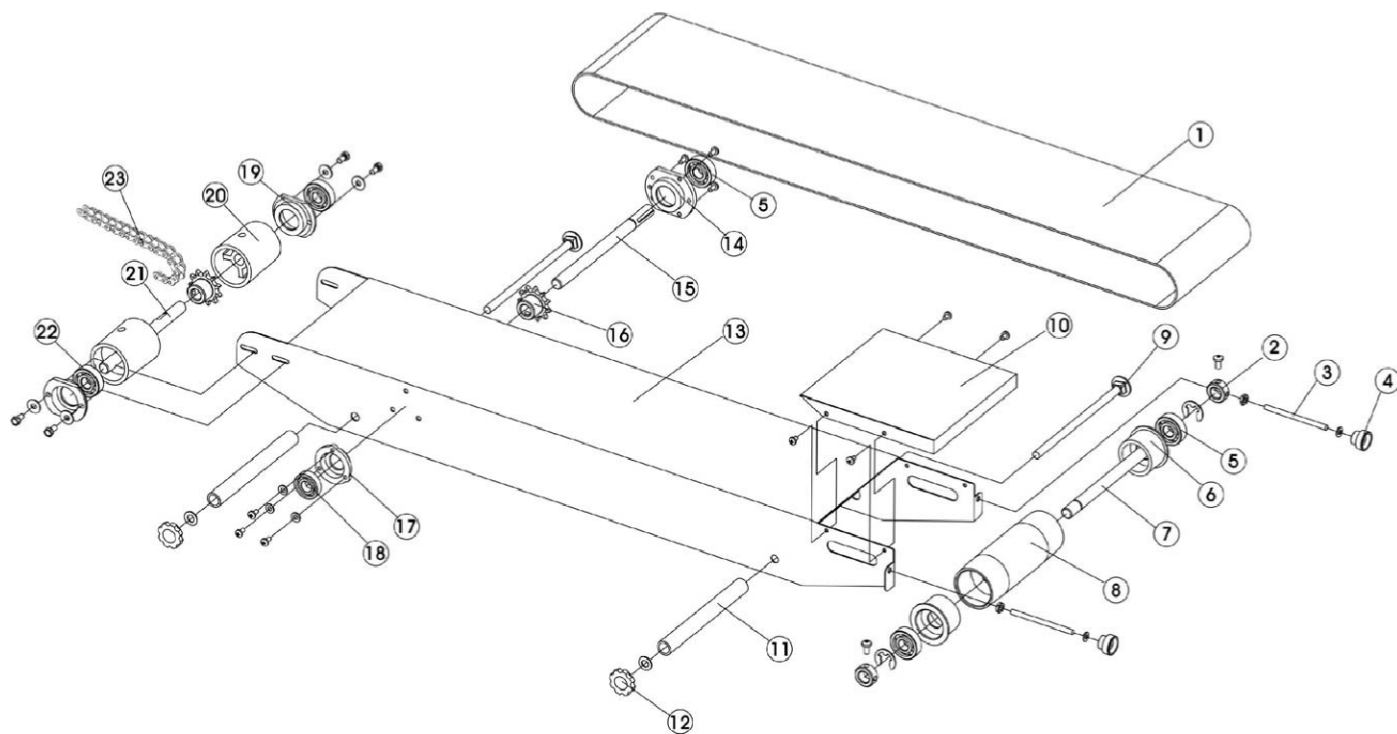


Figure 7. Conveyor Table

Figure 8. Conveyor Table

Item	Part #	Description	Quantity	Comments
1	CBS-880-1	conveyor belt	1	
2	BS-16	adjusting block for conveyor belt	2	Includes #2, 3, 4
3	BS-16	double end bolt	2	Includes #2, 3, 4
4	BS-16	adjusting knob for conveyor table	2	Includes #2, 3, 4
5	CBS-880-41	6201-Z bearing	3	Includes #5, 14-18
6	CBS-880-36	bearing seat of rear roller	2	Includes #5, 6, 7, 8
7	CBS-880-36	rear shaft of conveyor table	1	Includes #5, 6, 7, 8
8	CBS-880-36	rear roller of conveyor table	1	Includes #5, 6, 7, 8
9	CBS-880-18 / CBS-880-18B	half-round square neck bolt	2	Includes #9, 11, 12
10	CBS-880-15	worktable	1	specify flat or curved edges
11	CBS-880-18	plastic spacer	2	Includes #9, 11, 12
12	CBS-880-18 / BS-17	knob	2	Includes #9, 11, 12
13	CBS-880-20	conveyor table	1	
14	CBS-880-41	bearing seat	1	Includes #5, 14-16
15	CBS-880-41	middle shaft of conveyor table	1	Includes #5, 14-16
16	CBS-880-41a	sprocket of conveyor table	2	Includes #5, 14-16
17	CBS-880-41-17	bearing seat (three-hole)	1	
18	CBS-880-41-18	6001-2Z bearing	1	
19	CBS-880-37	two-eye bearing seat	2	Includes #19, 20, 21, 22
20	CBS-880-37	front roller of conveyor table	2	Includes #19, 20, 21, 22
21	CBS-880-37	front shaft of conveyor table	1	Includes #19, 20, 21, 22
22	CBS-880-37	6201-2Z bearing	2	Includes #19, 20, 21, 22
23	CBS-880-38	chain (48 segments)	1	

CBS-880 SPARE PARTS DIAGRAM

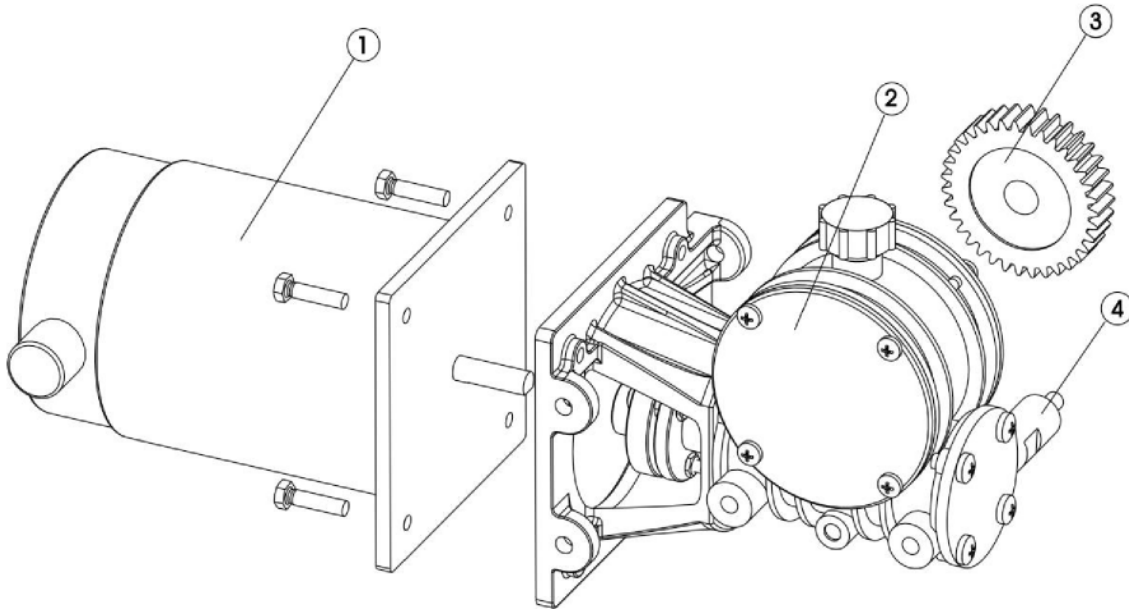


Figure 9. Motor / Turbocase

Item	Part #	Description	Quantity	Comments
1	CBS-880-29	110V DC motor	1	
	BS-29A	motor brush	2	Not shown. In motor.
2	CBS-880-30	worm-gear case assembly	1	
3	BS-35B	driving gearwheel	1	
4	CBS-880-12-4	pig iron gearwheel / turbocase support	1	

CBS-880 SPARE PARTS DIAGRAM

CBS-880 SPARE PARTS DIAGRAM

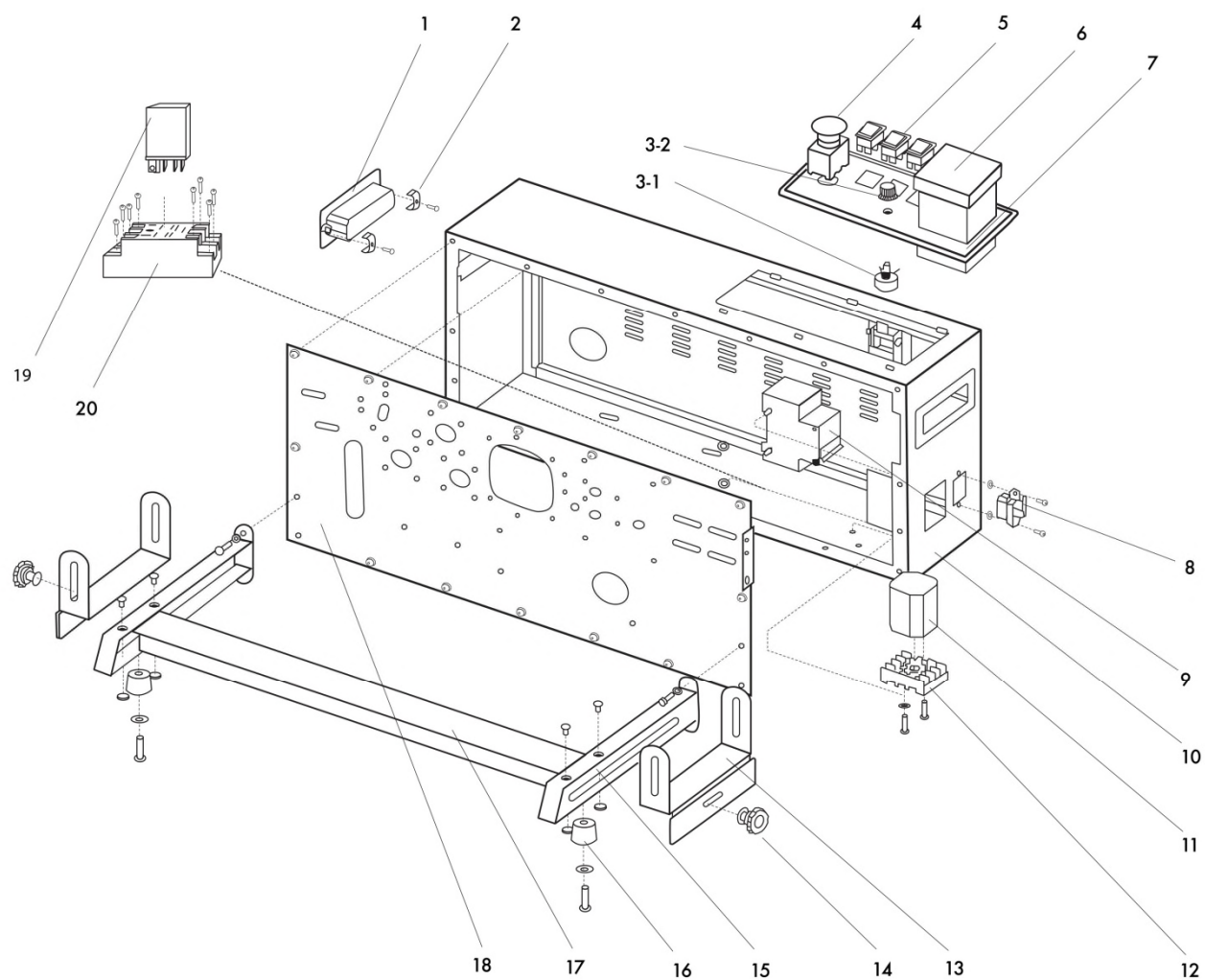


Figure 10. Sealer Body

CBS-880 SPARE PARTS DIAGRAM

Figure 11. Sealer Body

Item	Part #	Description	Quantity	Comments
1	CBS-880-88-1	handle support	2	Includes #1, #2
2	CBS-880-88-1	handle clamp	4	Includes #1, #2
3-1	BS-25	carbon-film potentiometer 220K	1	
3-2	BS-25A	K18-2 knob	1	
4	BS-22A	emergeney stop switch	1	
5	BS-22	springboard switch	3	specify large or small
6	TMC-XMTE-1000-2	temperature controller - gen 1.0	1	determine version by taking temperature controller out
	TMC-XMTE-1000-2-O	temperature controller - gen 2.0		determine version by taking temperature controller out
7	CBS-880-83	plastic panel	1	A: old gen / B: new gen
8	BS-14	10 ^a socket		
9	BS-27	DZ47-2P/5A breaker	1	
10	CBS-880-88	housing	1	
11	BS-52A	speed-regulating PC board	1	
12	BS-45A	PF083A socket	1	
13	CBS-880-18	transition table support	2	Includes #13, #14
14	CBS-880-18	(674 Knob) handle	2	Includes #13, #14
15	CBS-880-68	foot	2	specify left or right
16	BS-67B	rubber foot pad	2	specify A or B
17	CBS-880-68B	rail	1	
18	CBS-880-88-18	soleplate (electrophoresis)	1	Steel: 102102-3
19	R-JQX-13F	relay	1	

CBS-880 SPARE PARTS DIAGRAM

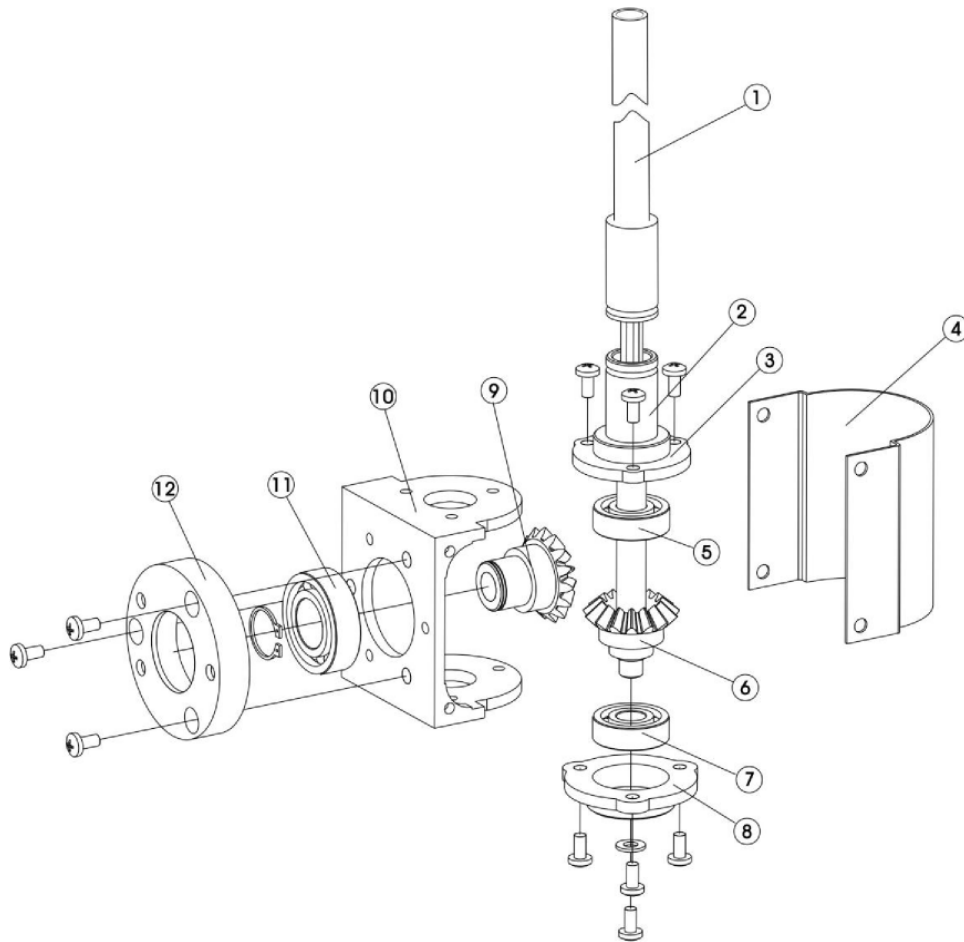


Figure 12. Umbrella Gear (only in CBS-880II units)

Item	Part #	Description	Quantity	Comments
1	CBS-880-72c	driving shaft I	1	Umbrella Gear Base - Parts #1-12
2	CBS-880-72c	driving shaft II	1	Umbrella Gear Base - Parts #1-12
3	CBS-880-72c	bearing support (big)	1	Umbrella Gear Base - Parts #1-12
4	CBS-880-72c	conical gear support cover	1	Umbrella Gear Base - Parts #1-12
5	CBS-880-72c	6000-2Z bearing	1	Umbrella Gear Base - Parts #1-12
6	CBS-880-72c	short conical gear	1	Umbrella Gear Base - Parts #1-12
7	CBS-880-72c	608 bearing	1	Umbrella Gear Base - Parts #1-12
8	CBS-880-72c	bearing support (small)	1	Umbrella Gear Base - Parts #1-12
9	CBS-880-72c	long conical gear	1	Umbrella Gear Base - Parts #1-12
10	CBS-880-72c	conical gear support	1	Umbrella Gear Base - Parts #1-12
11	CBS-880-72c	6003-2Z bearing	1	Umbrella Gear Base - Parts #1-12
12	CBS-880-72c	double-purpose bearing support (big)	1	Umbrella Gear Base - Parts #1-12

CBS-880 SPARE PARTS DIAGRAM

CBS-880 SPARE PARTS DIAGRAM

CBS-880 SPARE PARTS DIAGRAM

CBS-880 SPARE PARTS DIAGRAM

