

Unit Information

120 volts – 420 Watts – 3.5 Amps

Unit Dimensions:

L 12.25" x W 10.5" x H 15.25"

Bowl Lid and Mixing Paddle
are Dishwasher Safe

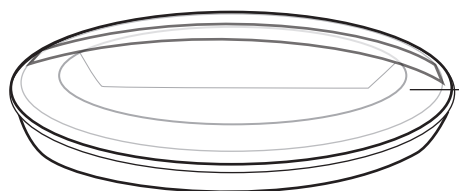
Bowl Handwash ONLY

Limited 1 Year Warranty

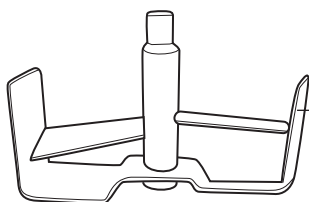
WARING COMMERCIAL®

2.5 Qt. Compressor Ice Cream Maker

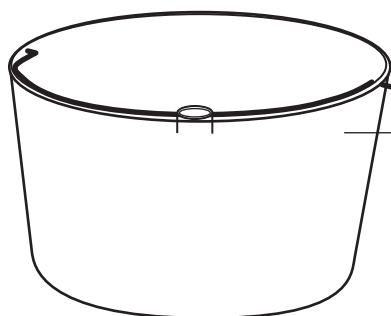
WCIC25



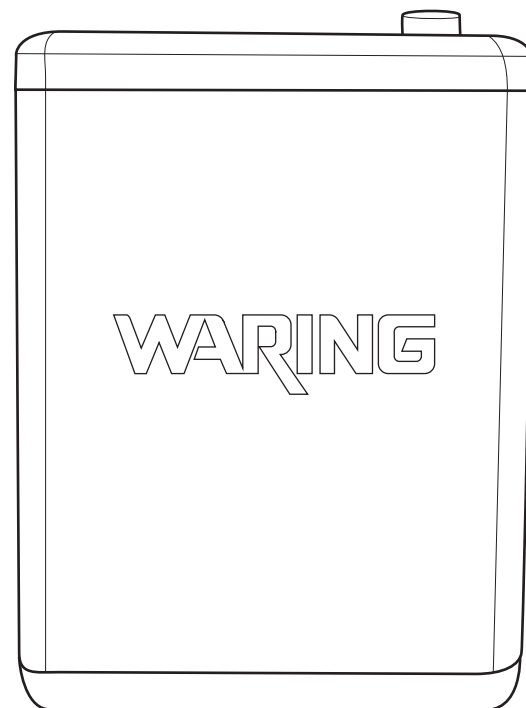
037313
Batch Bowl Lid



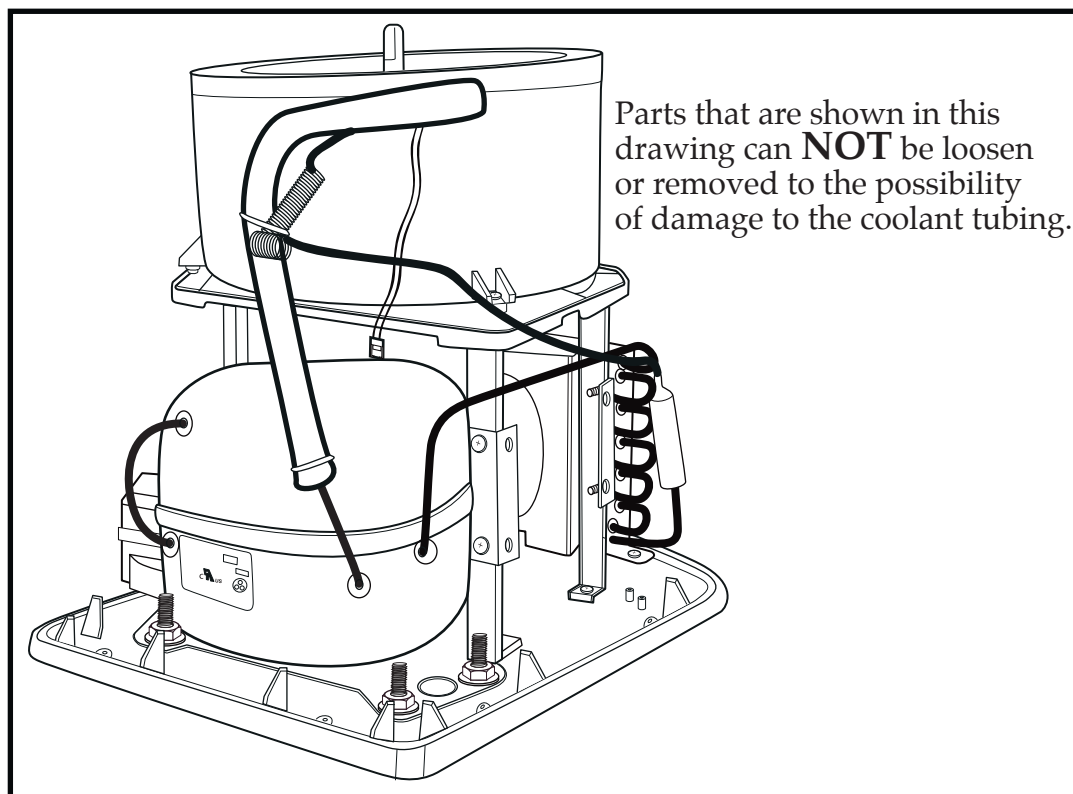
037314
Mixing Paddle



037315
Batch Bowl



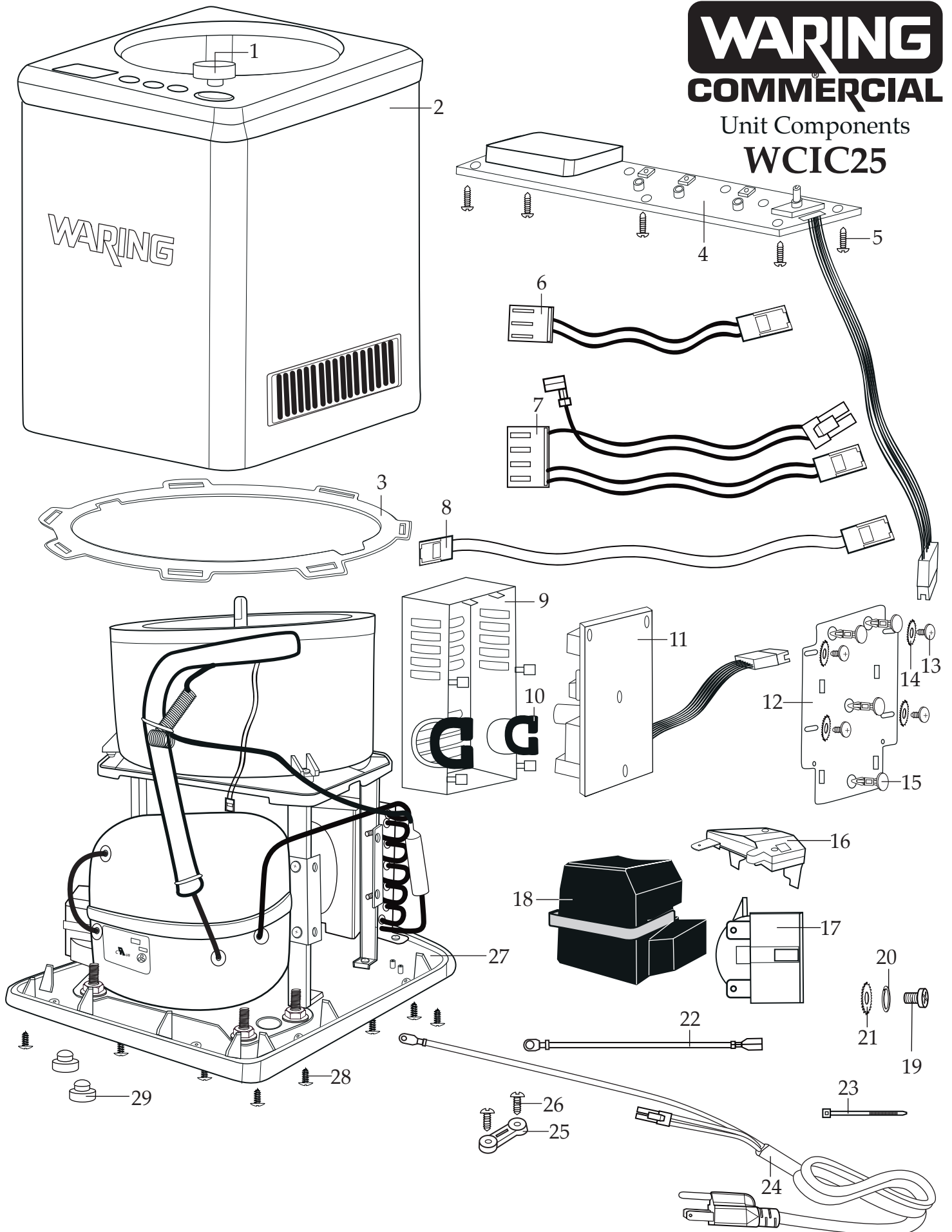
037333
WCIC25 Base Unit
(no cover, paddle, bowl)



WARING COMMERCIAL

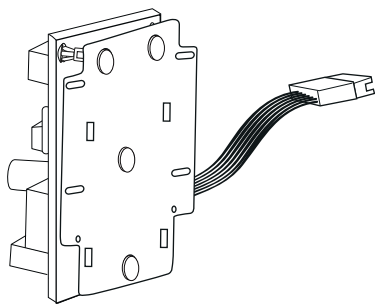
Unit Components

WCIC25



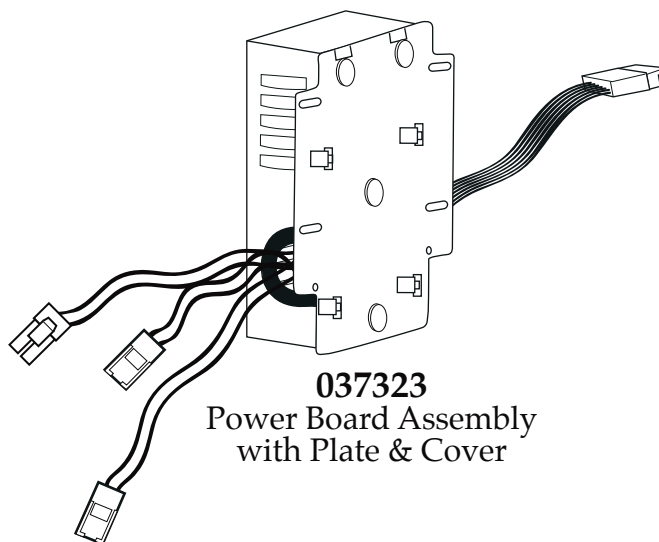
| Illustration# | Part# | Description |
|----------------------|--------------|--|
| 1 | 037317 | Knob |
| 2 | 037318 | Top Housing Assembly (with seal, control board, knob) |
| 3 | 037316 | Bowl Seal |
| 4 | 037319 | Control Board |
| 5 | 037320 | Control Board Screw (5 required) |
| 6 | 035740 | Red & Blue Lead Harness |
| 7 | 037330 | Red-White-Blue Lead Harness |
| 8 | 037331 | Temp Sensor Harness |
| 9 | 037334 | Power Board Cover |
| 10 | 035736 | Rubber Wiring Tube (2 required) |
| 29 | 035721 | Foot (2 required) |
| 11 | 037321 | Power Board |
| 12 | 037335 | Power Board Plate |
| 13 | 037324 | Power Board Screw (4 required) |
| 14 | 037325 | Power Board Lock Washer (4 required) |
| 15 | 037326 | Press On Stand Offs (4 required) |
| 16 | 035730 | Single Pole Terminal |
| 17 | 035731 | Double Pole Terminal |
| 18 | 035734 | Pole Terminal Cover |
| 19 | 035732 | Ground Screw (2 required) |
| 20 | 037327 | Spring Washer (1 for each screw) |
| 21 | 035733 | Ground Lock Washer (1 for each screw) |
| 22 | 035753 | 10.25" Green/ Yellow Lead |
| 23 | 013731 | Cable Ties (5 required) |
| 24 | 037329 | Cord with Lead Assembly |
| 25 | 035751 | Cord Clamp |
| 26 | 037328 | Cord Clamp Screw |
| 27 | 037332 | Compressor Base Assembly (with cord, motors, pole terminals, pole cover) |

| Illustration # | Part # | Description |
|----------------|--------|---------------------------------|
| 28 | 035723 | Bottom Plate Screw (8 required) |
| 29 | 035721 | Foot (2 required) |



037322

Power Board Assembly with Plate



037323

Power Board Assembly
with Plate & Cover