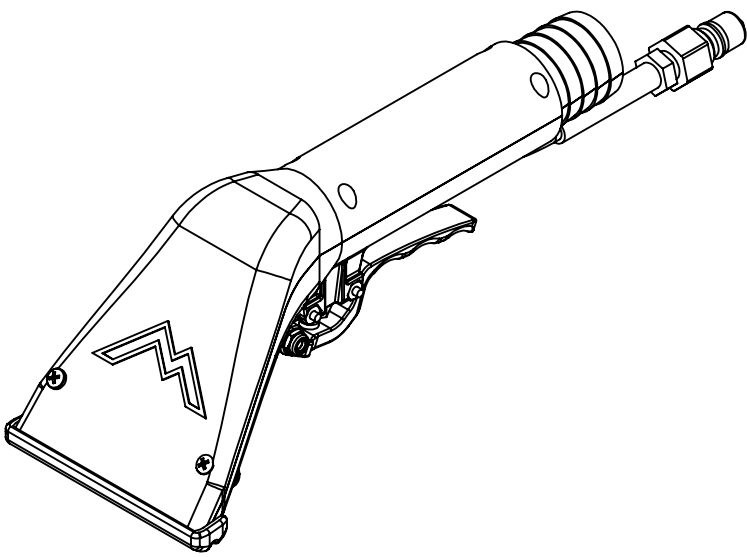
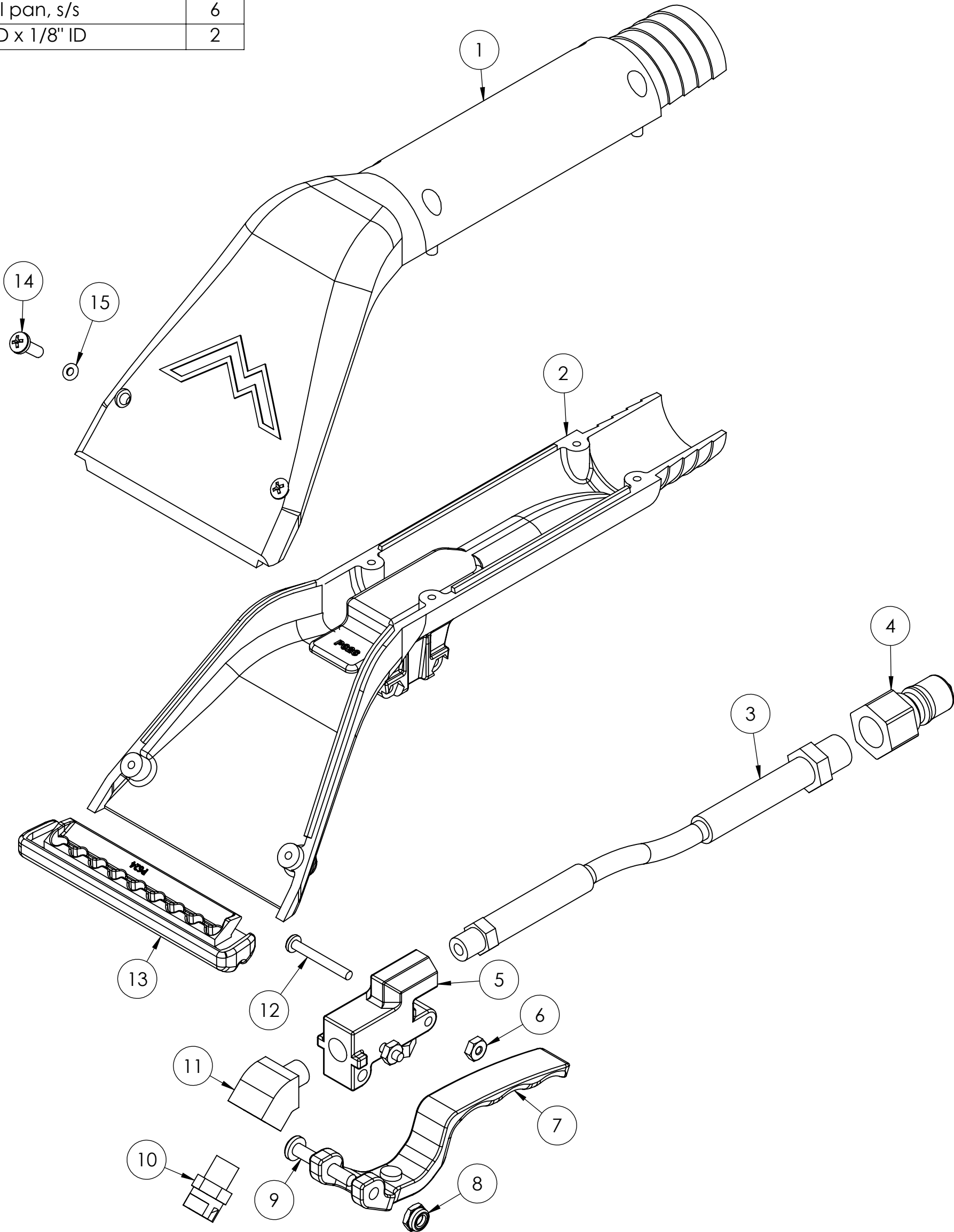


| ITEM NO. | PART NO. | DESCRIPTION | QTY. |
|----------|----------|---|------|
| 1 | P622 | housing, upper clear, handtool | 1 |
| 2 | P623 | housing, lower black, handtool | 1 |
| 3 | A935 | sol hose, pigtail, 1/8 x 7 1/2" | 1 |
| 4 | B101 | qd, brass, 1/4" m | 1 |
| 5 | B144B | valve assy, hand tool, 8400P | 1 |
| 6 | H792 | nut, lock, 6-32, nylon insert, s/s | 2 |
| 7 | P625 | lever, upholstery tool | 1 |
| 8 | H458 | nut, lock, 10-32, thin pattern | 1 |
| 9 | H788 | screw, 10-32 x 1-3/8", phil pan head, s/s | 1 |
| 10 | B163 | jet, 1/8", vv8002, brass | 1 |
| 11 | B657 | elbow, 45 deg street, 1/8" mpt x 1/8" fpt | 1 |
| 12 | H791 | screw, 6-32 X 1-1/8", phil pan, s/s | 2 |
| 13 | P624 | glide, upholstery tool | 1 |
| 14 | H794 | #8 x 1/2", phil pan, s/s | 6 |
| 15 | G214 | o-ring, 1/4" OD x 1/8" ID | 2 |

| REVISIONS | | | |
|-----------|----------------|---------|----------|
| REV. | DESCRIPTION | DATE | APPROVED |
| OD | ORIGINAL DRAFT | 10/2017 | JFL |



| | | | | |
|--|-------------|---------|---|----------------------|
| | NAME | DATE | MYTEE PRODUCTS, INC. 858-679-1191 | |
| DRAWN | M.LaBarbera | 10/2017 | | |
| CHECKED | | | TITLE: | |
| PROPRIETARY AND CONFIDENTIAL THE INFORMATION CONTAINED IN THIS DRAWING IS THE SOLE PROPERTY OF MYTEE PRODUCTS, INC. ANY REPRODUCTION IN PART OR AS A WHOLE WITHOUT THE WRITTEN PERMISSION OF MYTEE PRODUCTS, INC. IS PROHIBITED. | | | Air Lite | |
| | | | SIZE | DWG. NO. |
| | | | C | 8400P |
| | | | SCALE: 1:5 | DO NOT SCALE DRAWING |
| | | | SHEET 1 OF 1 | |