



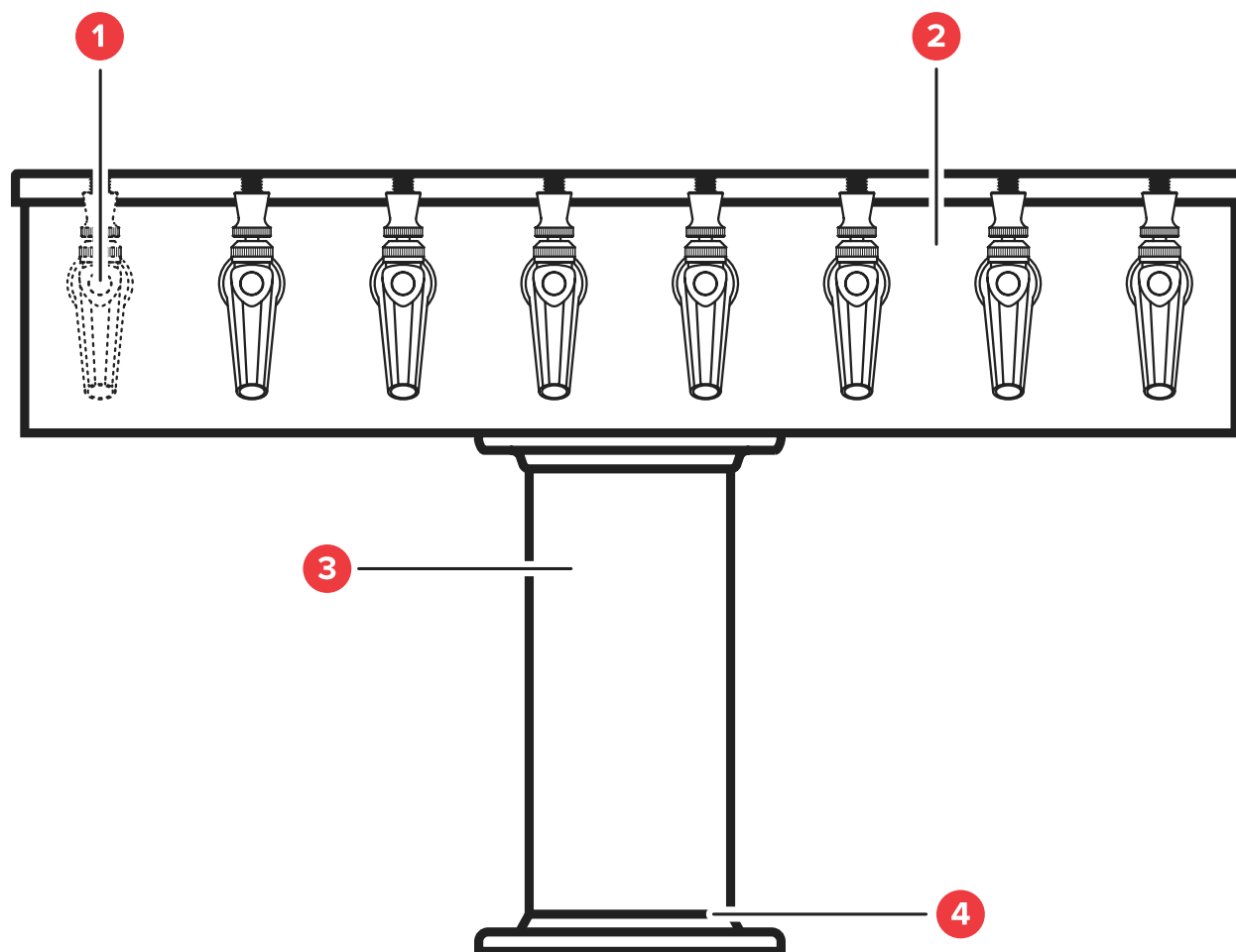
Customizable Tap Towers

OPTIONS GUIDE



Tap Tower Customizable Features

This Micro Matic customizable tap tower system adds a unique aesthetic appeal to your operation while boosting the efficiency of your bar, restaurant, club, or venue. Reference the PDF located on this webpage to browse between the wide range of customizable features such as finish, shape, style, and faucet quantity.



1. Faucet Quantity

Whether you are looking for a single faucet or 100 faucets, this tower can be personalized to meet the specific demands of your business.

2. Finish & Color

Choose between a variety of finishes including stainless steel, PVD brass, chrome, cast iron, ceramic, and more.

3. Style

This tap tower system offers a unique line of shapes including tower, column, or mushroom. This versatile selection allows you to select exactly what you need.

4. Mounting

This tap tower system offers three different mounting styles including surface mounted, ceiling mounted, and wall mounted.

Finish & Color

This unit comes in a variety of finishes and colors to complement your existing decor. Choose between brushed stainless steel, polished stainless steel, PVD brass, chrome, cast iron, and ceramic to add a sleek look to your space. Or, for a more colorful design, select the powder-coated version with hundreds of colors to choose from.



Polished Stainless Steel

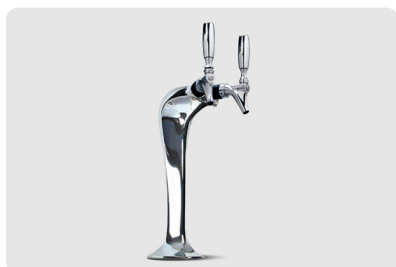


PVD Brass



Powder Coated

COLOR OPTIONS AVAILABLE ON PAGE 5



Chrome



Polished Gold Chrome



Cast Iron



Ceramic

COLOR OPTIONS AVAILABLE ON PAGE 4



Varnished Natural Oak



Dark Oak

Ceramic Color Options



Clear



Mother of Pearl
over Clear



Antique Crackle



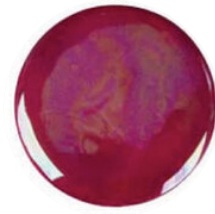
Liquid Copper
over Black



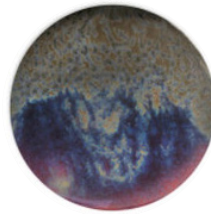
Bright Yellow



Strawberry Red



Mother of Pearl
over Red



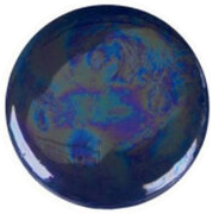
Potter's Coffee



Burgundy



Midnight Blue



Mother of Pearl over
Midnight Blue



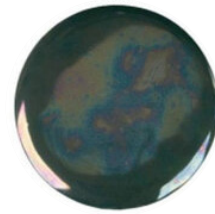
Blue Stardust



Heirloom Silver



Emerald Green



Mother of Pearl over
Emerald Green



Hunter Green



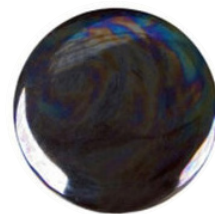
Black Stardust



Black Mirror



Black



Mother of Pearl
over Black



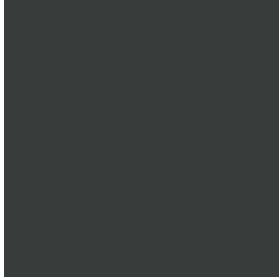
Copper Mine



Black Marble

Powder Coated Color Options

Most Popular Colors



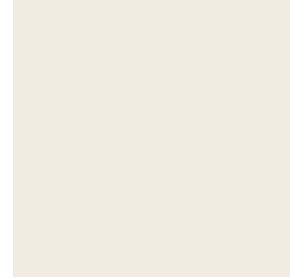
ERSM10075
Matte Black II



SRSS10083
Jet Black



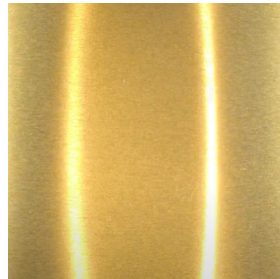
PLSF60229
Little Red Wagon



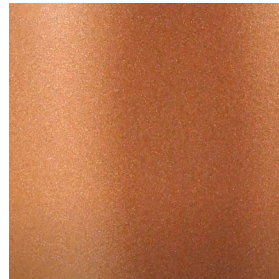
PLSF80016
Pure White



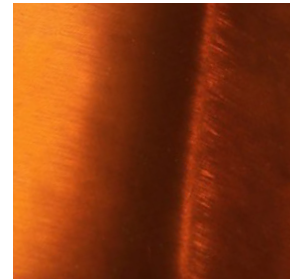
PPB-10618
Flat Extruded Brass



PPS-5159
Transparent Brass



PMB-4934
Fireside Copper

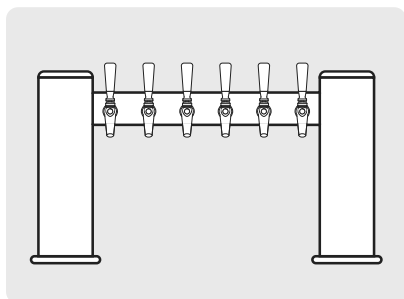


PPS-5162
Transparent Copper

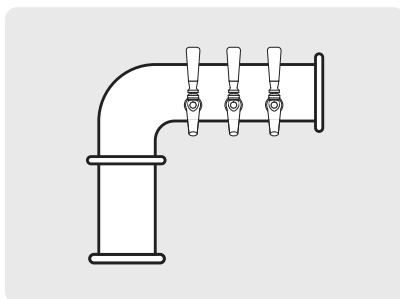
For additional color options and requests, please complete the [RAQ form](#)

Style

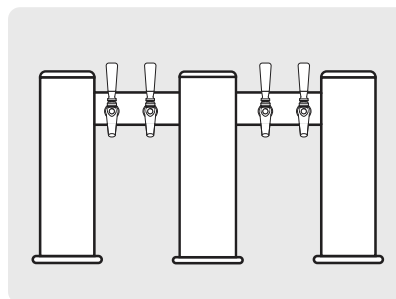
This tap tower system offers a unique line of shapes including tower, column, or mushroom. For the tower option, you can choose between “M” style, “T” style, “Y” style, “H” style, “U” style, and “L” style. This versatile selection allows you to select exactly what you need.



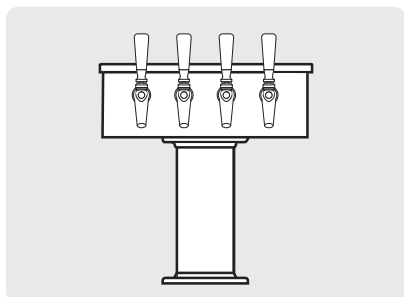
“H” Style



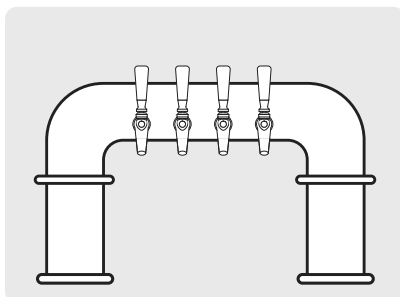
“L” Style



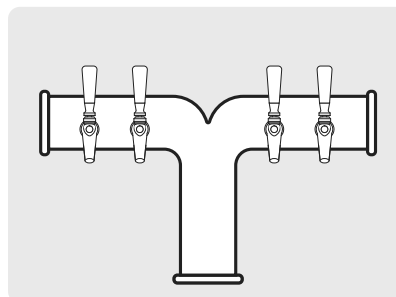
“M” Style



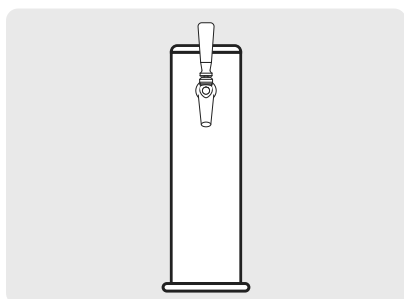
“T” Style



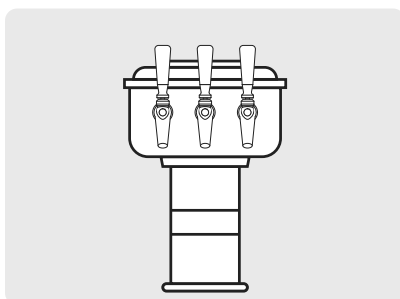
“U” Style



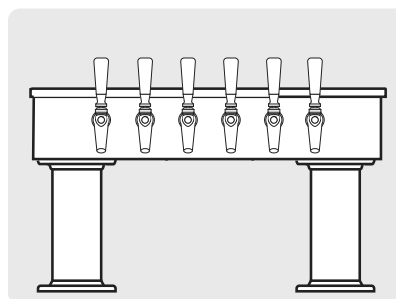
“Y” Style



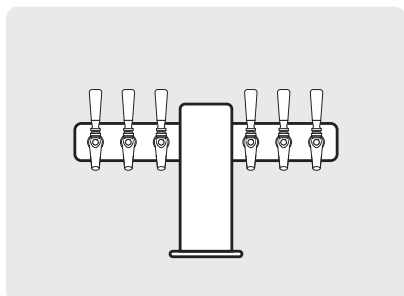
Column



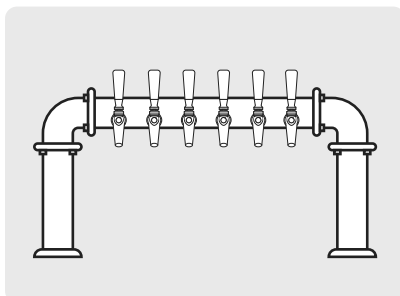
Mushroom



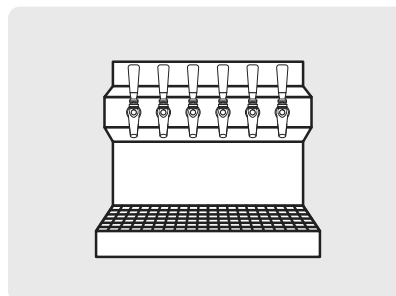
Double Pedestal



Metropolis



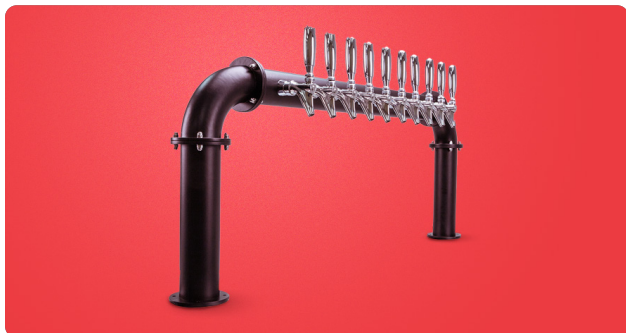
Biergarten



Kronos
Works well with self pour systems

Mounting

This tap tower system offers three different mounting styles including surface mounted, ceiling mounted, and wall mounted. This allows you to select the style that will best accommodate and maximize your existing space.



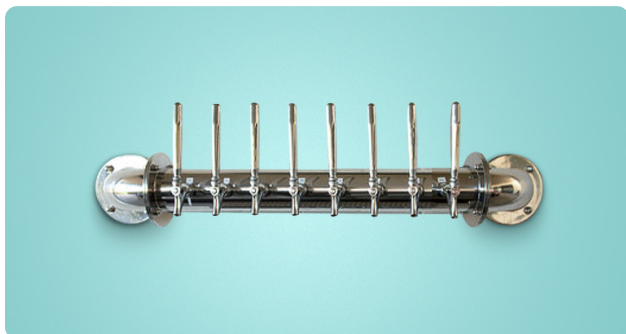
Surface Mounted

The convenient surface mounted style makes it easy to add your tap tower system onto an existing surface.



Ceiling Mounted

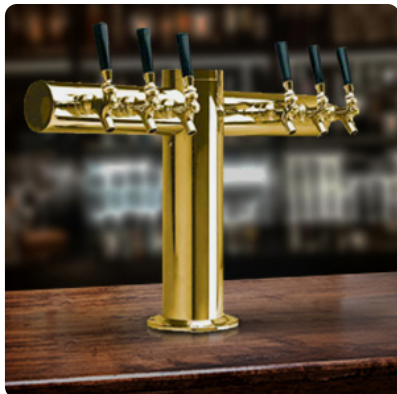
The ceiling mounted option allows you to mount your system above your bar, making it great for areas with limited space.



Wall Mounted

This wall mounted style makes your tap tower system easy to access without taking up valuable counterspace.

Tap Tower Examples



Tap Tower 1

Faucet Quantity: 6
Finish: Non Tarnish PVD Brass
Style: "T" Tower
Mounting: Surface



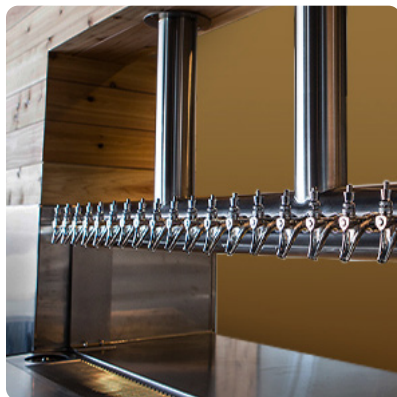
Tap Tower 2

Faucet Quantity: 12
Finish: Polished Stainless Steel
Style: Wall Mounted
Mounting: Wall



Tap Tower 3

Faucet Quantity: 10
Finish: Powder Coated
Color: Black
Style: "U" Tower
Mounting: Surface



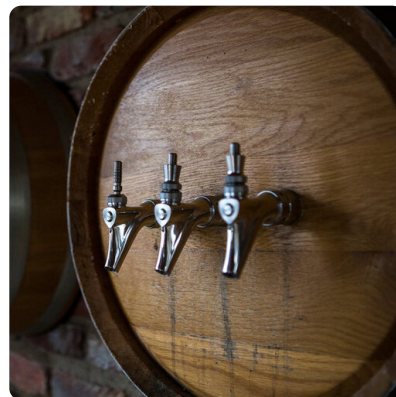
Tap Tower 4

Faucet Quantity: 18
Finish: Polished Stainless Steel
Style: Double Pedestal
Mounting: Ceiling



Tap Tower 5

Faucet Quantity: 10
Finish: Polished Stainless Steel
Style: "H" Tower
Mounting: Surface



Tap Tower 6

Faucet Quantity: 3
Finish: Varnished Natural Oak
Style: Wall Mounted
Mounting: Wall

