

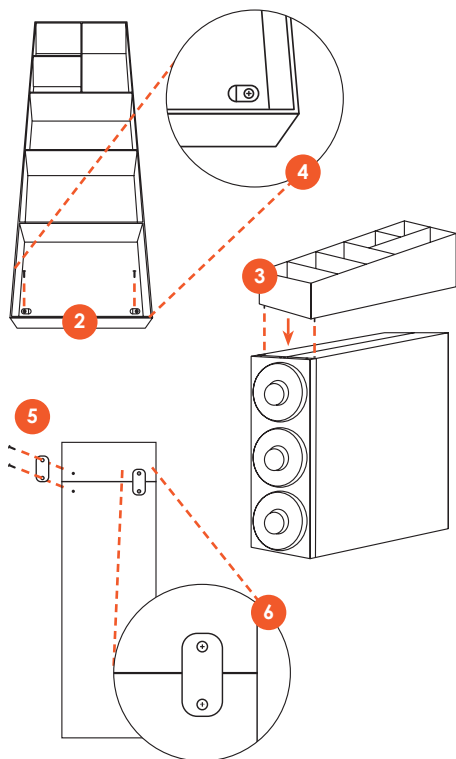


# Top Attachment for Cup-Dispenser Cabinets

## Installation Instructions

651CPDCSS1, 651CPDCSS1T, 651CPDCSS2, 651CPDCSS2T,  
651CPDCSS3, 651CPDCSS3T, 651CPDCSS4, 651CPDCSS4T

### Installing Top Attachment to Cup Dispenser Cabinets



- 1 Place cup dispenser cabinet on countertop.
- 2 Insert 2 screws into the front holes of the lid organizer.
- 3 Position organizer on top of the cup-dispenser cabinet making sure to align the screws over the top holes of the cabinet.
- 4 Fasten screws with a Phillips-head screwdriver, making sure the threads are aligned.
- 5 Align a bracket over the holes on the back of both units.
- 6 Using a Phillips-head screwdriver, fasten 2 screws but do not tighten all the way.
- 7 Repeat steps 6-7 for the other side.
- 8 Fasten all screws until tight and top unit is secure on the cabinet.

### Installing Optional Non-Skid Feet

If using the lid organizer as a standalone unit on the countertop, place non-skid feet on the bottom 4 corners of the unit.

