

Combi Oven Installation Checklist



Contents

| | |
|--|------|
| Survey Checklist & Installation Requirements | 2 |
| Install Kit Components | 3 |
| Check Installation Site | 4-5 |
| Inlet Water Supply Diagram | 6 |
| Post-Installation Dimensions | 7 |
| Isometric Drawings | 8-11 |

REVISED 08/2024

Installation Checklist



Combi Oven Site Survey Checklist & Installation Requirements:

| # | Requirement | YES | NO | N/A | Notes |
|---|---|-----|----|-----|-------|
| 1 | Adequate clearance/spacing between doors and hallways for movement of combi oven into kitchen | | | | |
| 2 | Adequate clearance/spacing between combi oven and heat sources | | | | |
| 3 | Suitable & level floor, stand/table or other equipment to position combi oven on | | | | |
| 4 | Suitable electric connection at location (within 6 feet of oven) | | | | |
| | Power cable is properly sized for voltage, phase, and amperage | | | | |
| | Properly sized breaker or safety switch is installed | | | | |
| | Amperage draw and voltage at startup for L1, L2, and L3 (3 phase units) and L1 and L2 (1 phase units) is recorded | | | | |
| 5 | Suitable inlet water connection at location (within 6 feet of oven) | | | | |
| | Water supply is cold water? | | | | |
| | Water quality/hardness test performed? | | | | |
| | PH >7.5 | | | | |
| | Inlet pressure 150-200 kPa (22-29 psi) | | | | |
| | Free chlorine <0.1 ppm (mg / L) | | | | |
| | Hardness 60-90 ppm | | | | |
| | Chlorides <30ppm | | | | |
| | Silicia <12 ppm (mg / L) | | | | |
| | Total dissolved solids (tds) 50-125 ppm | | | | |
| | Water shutoff valve is installed? | | | | |
| | 2-Stage filtration system installed | | | | |
| | Water softener installed (if required) | | | | |
| 6 | Suitable drainpipe & water discharge at location | | | | |
| | Drain is at least 1" wide | | | | |
| | Drainpipe is at least 1" wide | | | | |
| | Drainpipe has 5% gradient (1/4" per foot) | | | | |
| | Drainpipe made of suitable material (Iron or Copper) | | | | |
| | Drainpipe made of suitable material (Iron or Copper) | | | | |
| 7 | Proper ventilation according to all applicable codes | | | | |
| | Combi oven has proper clearance under hood | | | | |
| | Hood has proper overhang for combi oven | | | | |

Installation Checklist



**For detailed information on installation, please refer to the operation manual, specification sheets, site survey checklist, and installation requirements. For questions, please contact the place of purchase. Installation must conform to all specifications, all applicable codes such as the National Electric Code, ANSI/NFPA No. 70, CSA C22.1 (where applicable), ICC International Plumbing Code 2003, IAPMO Uniform Plumbing Code 2003, and any other applicable codes. Each activity must be performed by an authorized and licensed professional in the respective field.*

This field survey and installation has been completed on:

Date (day/month/year): _____

By:

Company: _____

Name: _____

Phone: _____

Address: _____

Confirming the survey and installation have been properly completed.

It is recommended to purchase and use the CPG Basic Electric Control Install Kit for installation of your combi oven.

The Install Kit Includes the Following Components:

The install kit includes the necessary components for a seamless install for most operations. Not all parts are used in every installation

Water Supply

- 1x Push to Connect Fitting 5/16" tube x 3/8"NPT Male Fitting (Used for Connecting Combi Water line to select water filter systems)

Drain Components

- 1x 10ft section of flexible drain tube (1-1/8" ID, 1-1/2" OD)
- 2x Worm-Drive clamps

Power Supply

- 1x 24ft section of 4 AWG THHN Wire, Black
- 1x 8ft section of 4 AWG THHN Wire, Green
- 1x 6ft section of 1" Flexible Metal Conduit
- 1x 1" Straight Flexible Metal Conduit Adapter (1" Female x 1" NPSM Male)
- 2x 1" 90° Flexible Metal Conduit Adapter (1" Female x 1" NPSM Male)

Installation Checklist



Check Pre-Installation Site

1. Required Door Width:

| Item # | With Packaging | Without Packaging |
|------------|----------------|-------------------|
| 351OCB16I | 43-1/4" | 37-7/8" |
| 351OCB110I | 43-1/4" | 37-7/8" |
| 351OCB26I | 43-1/4" | 37-7/8" |
| 351OCB210I | 43-1/4" | 37-7/8" |

HINTS:

- Door and legs are removable to allow the oven to fit through smaller door ways.

Check Installation Site

2. Required Installation Clearances

| Item # | Oven Dimensions | | Non-Combustible Surfaces | | Combustible Surfaces | |
|------------|-----------------|--------|-------------------------------|-------------------------------|-------------------------------|-------------------------------|
| | Width | Depth | Minimum Width with Clearances | Minimum Depth with Clearances | Minimum Width with Clearances | Minimum Depth with Clearances |
| 351OCB16I | 37.80" | 37.20" | 41.80" | 39.20" | 73.80" | 65.20" |
| 351OCB110I | 37.80" | 37.20" | 41.80" | 39.20" | 73.80" | 65.20" |
| 351OCB26I | 37.80" | 44.78" | 41.80" | 46.78" | 73.80" | 72.78" |
| 351OCB210I | 37.80" | 44.78" | 41.80" | 46.78" | 73.80" | 72.78" |

- Clearance from non-combustible surfaces: 2" from sides and back of the oven
- Clearance from combustible surfaces: 18" from sides and 28" from back of the oven
- Refer to the isometric drawings on pages 7-10

| Requirement | YES | NO | N/A |
|---|-----|----|-----|
| Fryers or cooking equipment located within 12" of right side of combi oven? (If yes, heat shield must be installed) | | | |
| Heat shield installed on right side of combi oven? | | | |

Installation Checklist



3. Positioning & Leveling

| Requirement | YES | NO | N/A |
|--------------------|-----|----|-----|
| Floor Level | | | |
| Stand/Table Level | | | |
| Combi Oven Level | | | |
| Combi Oven Secured | | | |

- Surface and stand/table must be strong enough to support the weight of the Combi Ovens, any installed accessories (pans, plates, etc), and any food product. The minimum recommended weight capacity is 750lb.

4. Electrical Requirements

- All utilities should be within 6 feet of the oven
- Breaker sizes are listed for 3 phase. If using 1 phase, ensure a proper sized breaker and wire are installed.

| Item # | Voltage | Phase | Amperage | Breaker Size | Plug-In or Hardwired? | Wire Gauge |
|------------|----------|-----------------------|----------|--------------|-----------------------|------------|
| 351OCB16I | 208/240V | 3 Phase (Convertible) | 26.8A | 30A | Hardwired | 4/3 |
| 351OCB110I | 208/240V | 3 Phase (Convertible) | 39.8A | 60A | Hardwired | 4/3 |
| 351OCB26I | 208/240V | 3 Phase (Convertible) | 31.5A | 40A | Hardwired | 4/3 |
| 351OCB210I | 208/240V | 3 Phase (Convertible) | 47A | 60A | Hardwired | 4/3 |

| Requirement | YES | NO | Reading/Values |
|---|-----|----|----------------|
| Electrical connections within 6 feet of unit | | | |
| Breaker and wire sized appropriate for 3 phase or 1 phase | | | |
| Startup amperage draw (L1/2/3 for 3 phase units, L1/2 for 1 phase units) | | | |
| Startup voltage draw (L1/2/3 for 3 phase units, L1/2 for 1 phase units) | | | |

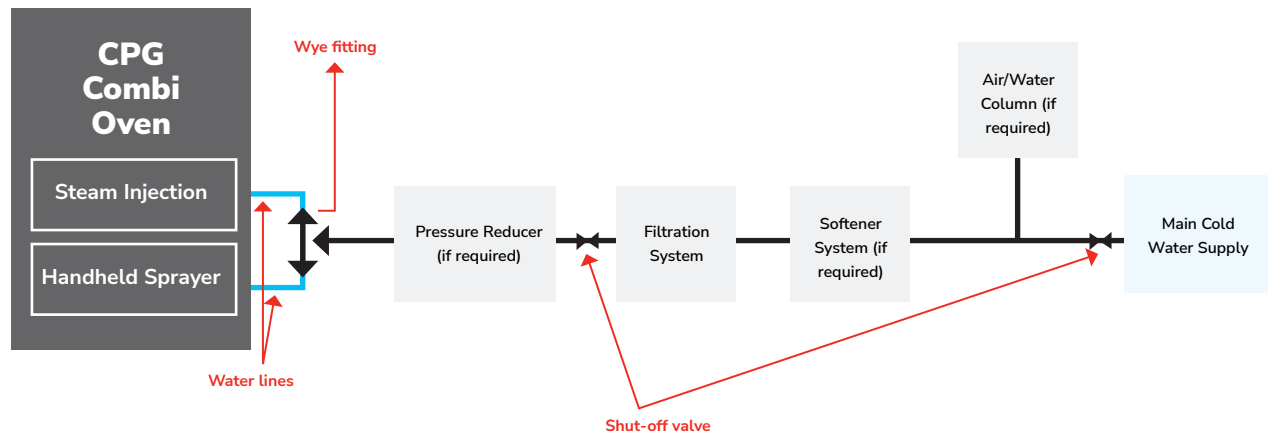
5. Inlet Water Requirements

- All utilities should be within 6 feet of the oven
- Only cold water should be run to the combi oven

| Water Quality | Requirement | Reading/Values |
|------------------------------|-------------------------|----------------|
| PH | >7.5 PH | |
| Inlet Pressure | 150-200 kPA (22-29 psi) | |
| Free Chlorine | <0.1 ppm (mg / L) | |
| Hardness | 60-90 ppm | |
| Chloride | <30 ppm | |
| Silica | <12 ppm (mg / L) | |
| Total Dissolved Solids (tds) | 50-125 ppm | |

- A water hardness/quality test should be performed prior to installation, and an appropriate 2-stage filtration system, water softener system, or similar 2-stage system is required to be installed.

Inlet Water Supply Diagram



- Water shut-off valve must be installed at an easy to access location in the event of burst pipe or maintenance to the combi oven

6. Drainpipe & Water Discharge Requirements

- All utilities should be within 6 feet of the oven
- Drainpipe must have a 5% gradient (1/4" per foot)
- Drainpipe must be at least 1" in diameter and capable withstanding at least 140°F. Copper, gray PVC or using the flexible drain tube included in the Install Kit is required, and a drain tempering kit can be installed if required.
- Drain line should not be more than 10 feet long and should be secured to the floor with pipe brackets.
- Water and drainpipe to comply with ICC International Plumbing Code 2003, IAPMO Uniform Plumbing Code 2003, and any other applicable codes

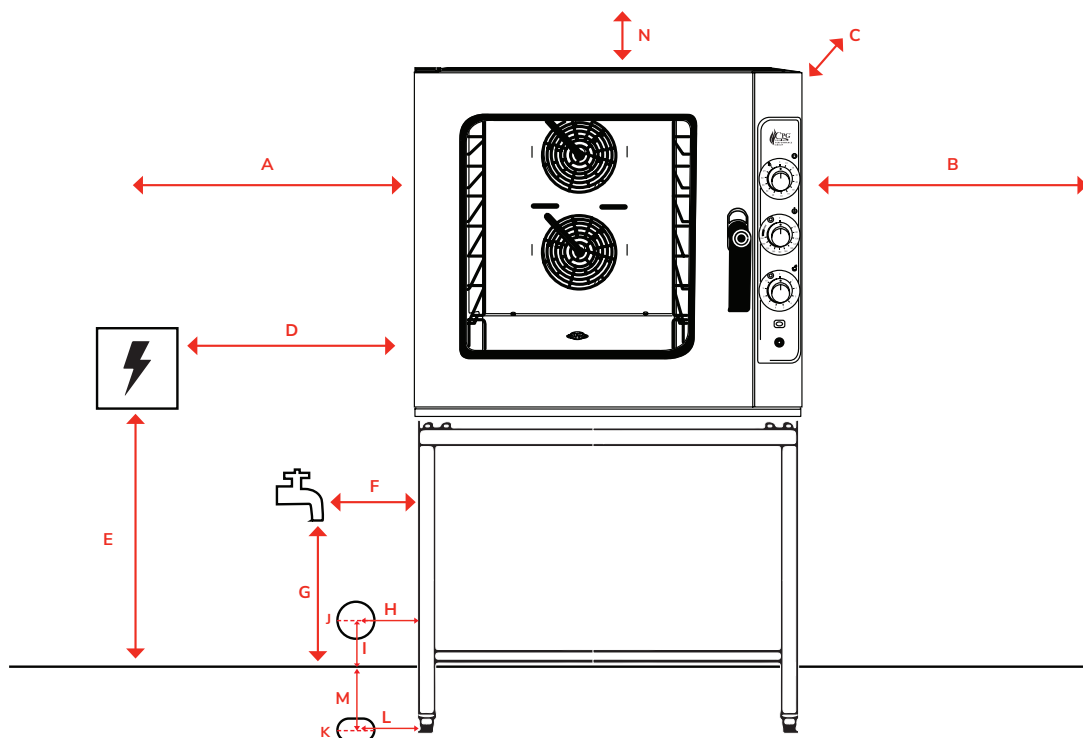
7. Ventilation

- Exhaust hood must extend over vent pipe of the combi oven
- Exhaust hood should overhang enough at the front of the combi, so that the hood captures most of the steam when the door is opened.
- Exhaust hood must be sized for all appliances under the hood, including the combi oven
- If there is an existing exhaust hood that cannot be used, a new one must be installed over the combi oven
- Hood sizing, including the overhang, should include the dimension of the oven, clearances on sides and back, as well as requirements to conform with all applicable governing codes, National Electric Code, ANSI/NFPA No. 70, and CSA C22.1.

Installation Checklist

Post-Installation Dimensions

Please fill in the values after the unit has been installed:



- Water shut-off valve must be installed at an easy to access location in the event of burst pipe or maintenance to the Combi Oven

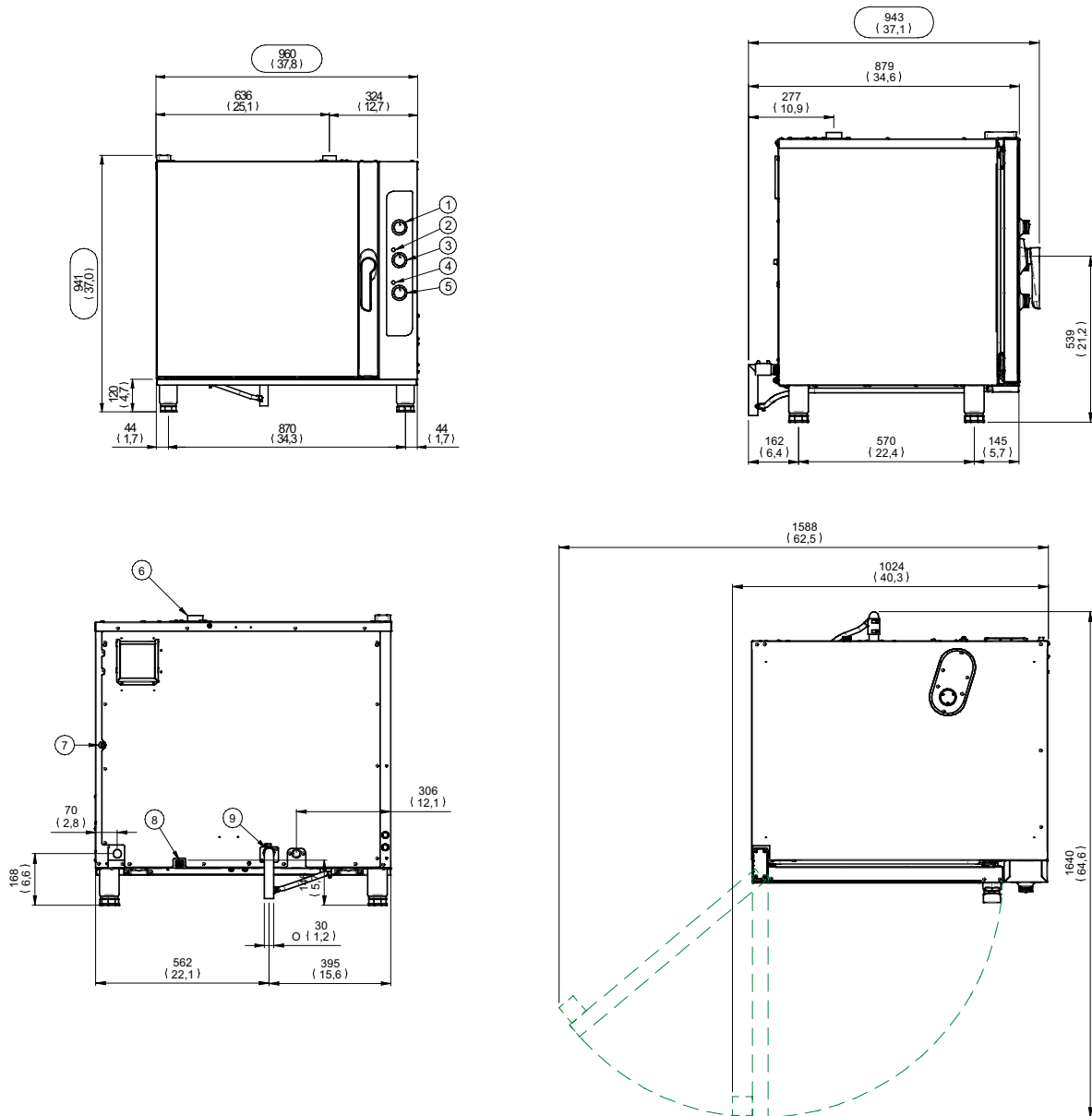
| Diagram Reference | Description | Reading/Values |
|-------------------|--|----------------|
| A | Left side of oven to wall or other equipment | |
| B | Right side of oven to wall or other equipment | |
| C | Rear of oven to wall | |
| D | Left side of oven to electrical box | |
| E | Height from floor to electrical box | |
| F | Left side of oven to water faucet / filter system / softener | |
| G | Height of water faucet / filter system / softener | |
| H | Left side of oven to center of wall drain | |
| I | Height from floor to center of wall drain | |
| J | Diameter of wall drain | |
| K | Diameter of floor drain | |
| L | Left side of oven to center of floor drain | |
| M | Rear wall to center of floor drain | |
| N | Top of Oven to bottom of hood or ceiling | |

Installation Checklist



Isometric Drawings

#351OCB16I



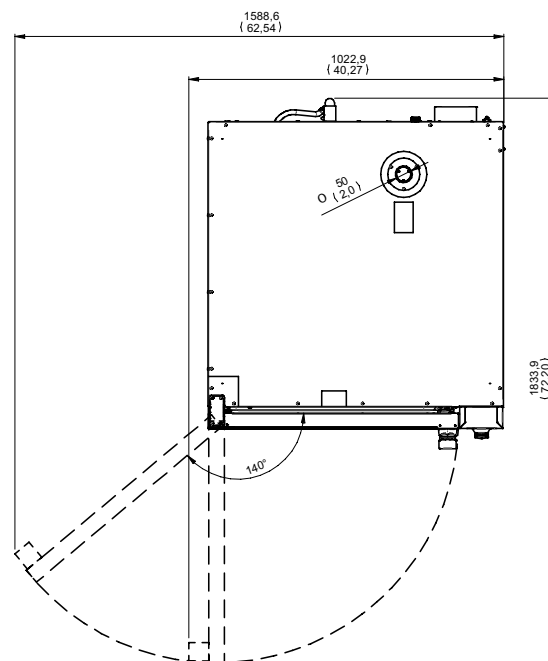
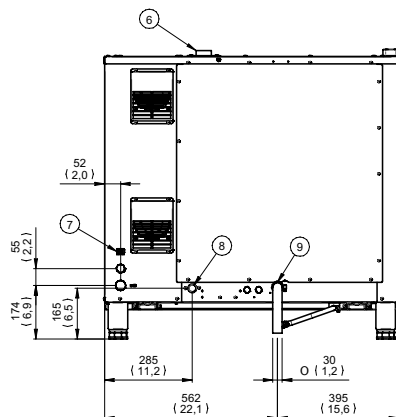
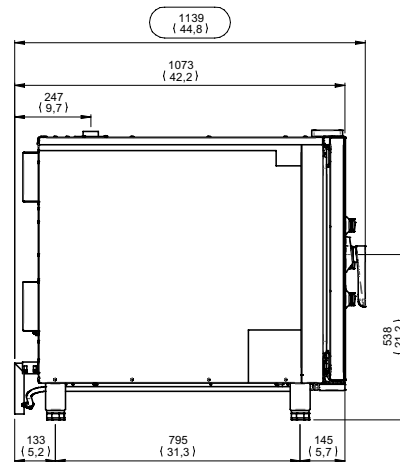
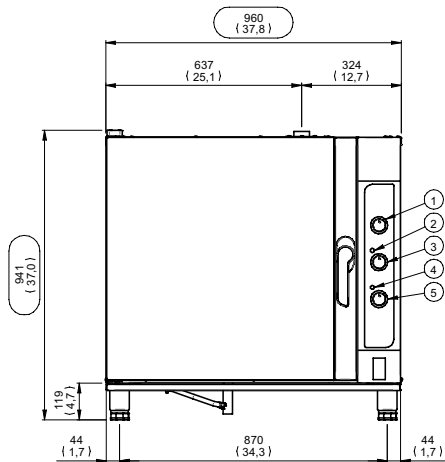
| Part# | Description |
|-------|----------------------------|
| 1 | Timer Control |
| 2 | Thermostat Indicator Light |
| 3 | Temperature Control |
| 4 | Steam Indicator Light |
| 5 | Steam Control |

| Part# | Description |
|-------|----------------------|
| 6 | Exhaust Vent |
| 7 | High Limit |
| 8 | Water Inlet |
| 9 | Water Outlet (Drain) |

Installation Checklist

Isometric Drawings

#351OCB26I



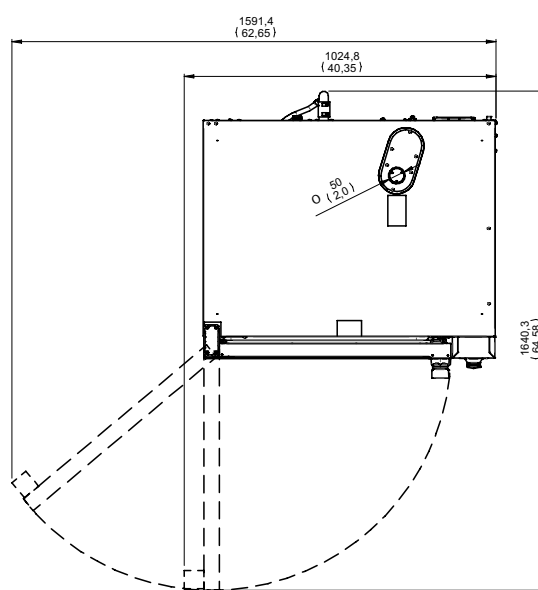
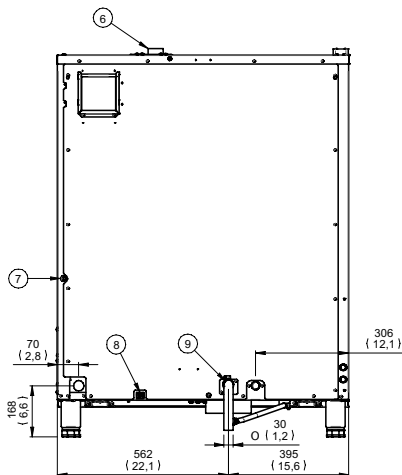
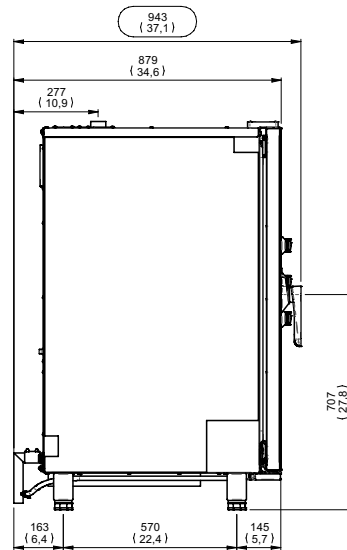
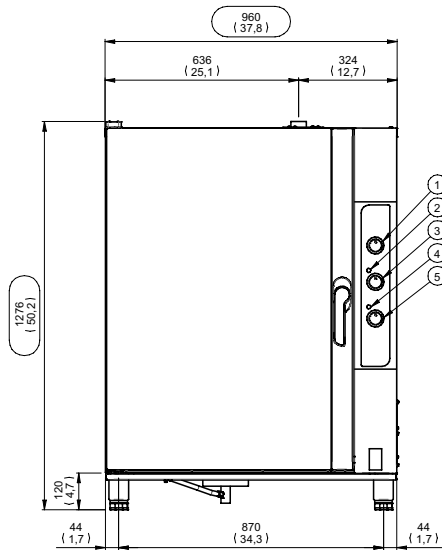
| Part# | Description |
|-------|----------------------------|
| 1 | Timer Control |
| 2 | Thermostat Indicator Light |
| 3 | Temperature Control |
| 4 | Steam Indicator Light |
| 5 | Steam Control |

| Part# | Description |
|-------|----------------------|
| 6 | Exhaust Vent |
| 7 | High Limit |
| 8 | Water Inlet |
| 9 | Water Outlet (Drain) |

Installation Checklist

Isometric Drawings

#351OCB110I



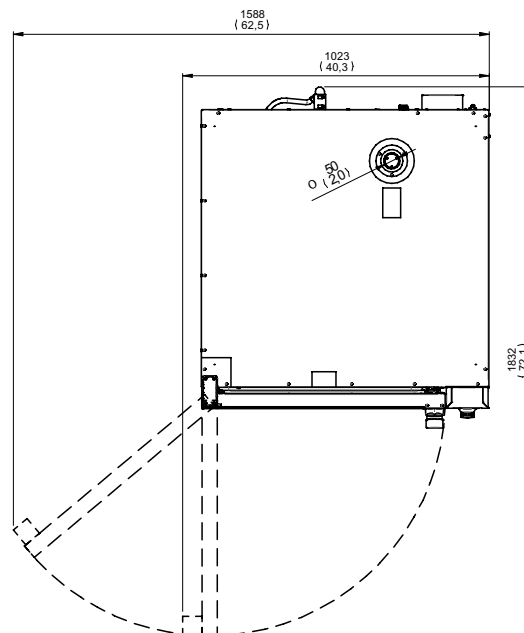
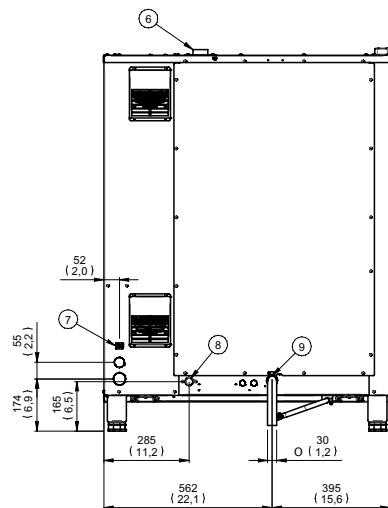
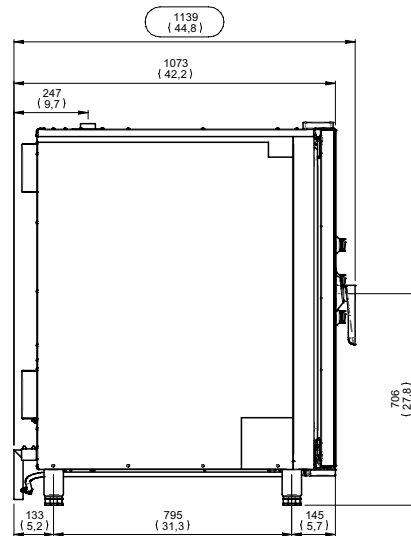
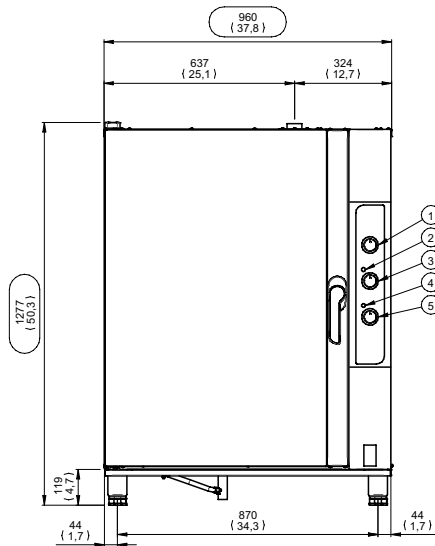
| Part# | Description |
|-------|----------------------------|
| 1 | Timer Control |
| 2 | Thermostat Indicator Light |
| 3 | Temperature Control |
| 4 | Steam Indicator Light |
| 5 | Steam Control |

| Part# | Description |
|-------|----------------------|
| 6 | Exhaust Vent |
| 7 | High Limit |
| 8 | Water Inlet |
| 9 | Water Outlet (Drain) |

Installation Checklist

Isometric Drawings

#351OCB210I



| Part# | Description |
|-------|----------------------------|
| 1 | Timer Control |
| 2 | Thermostat Indicator Light |
| 3 | Temperature Control |
| 4 | Steam Indicator Light |
| 5 | Steam Control |

| Part# | Description |
|-------|----------------------|
| 6 | Exhaust Vent |
| 7 | High Limit |
| 8 | Water Inlet |
| 9 | Water Outlet (Drain) |