

Gas Powered Convection Ovens



351FGC100(L/N), 351FGC200(L/N)K

REVISED 06/2024

Contents

Safety Precautions	3
Gas Pressure	3
Whole Assembly Diagram	4
Whole Assembly Parts List	5
Motor Assembly Diagram.....	6
Motor Assembly Parts List.....	7
Door Assembly Diagram.....	8
Door Assembly Parts List.....	9
Control Panel Diagram	10
Control Panel Parts List.....	10
Main Gas Pipe Assembly Diagram	11
Main Gas Pipe Assembly Parts List	11
Inlet Gas Pipe Assembly Diagram	12
Inlet Gas Pipe Assembly Parts List.....	12
Burner Assembly Diagram.....	13
Burner Assembly Parts List	13



Conforms to ANSI STD Z83.11-2016
Conforms to CSA STD 1.8-2016*

Safety Precautions

CAUTION:

- Failure to comply with the following operation instructions could lead to potential hazards and/or unsafe practice and could result in injury and damage to product and property.

NOTICE:

- Local codes regarding installation vary greatly from one area to another. The National Fire Protection Association, Inc. states in its NFPA96 latest edition that local codes are "Authority Having Jurisdiction" when it comes to requirement for installation of equipment. Therefore, installation should comply with all local codes.
- This product is intended for commercial use only. Not for residential use.

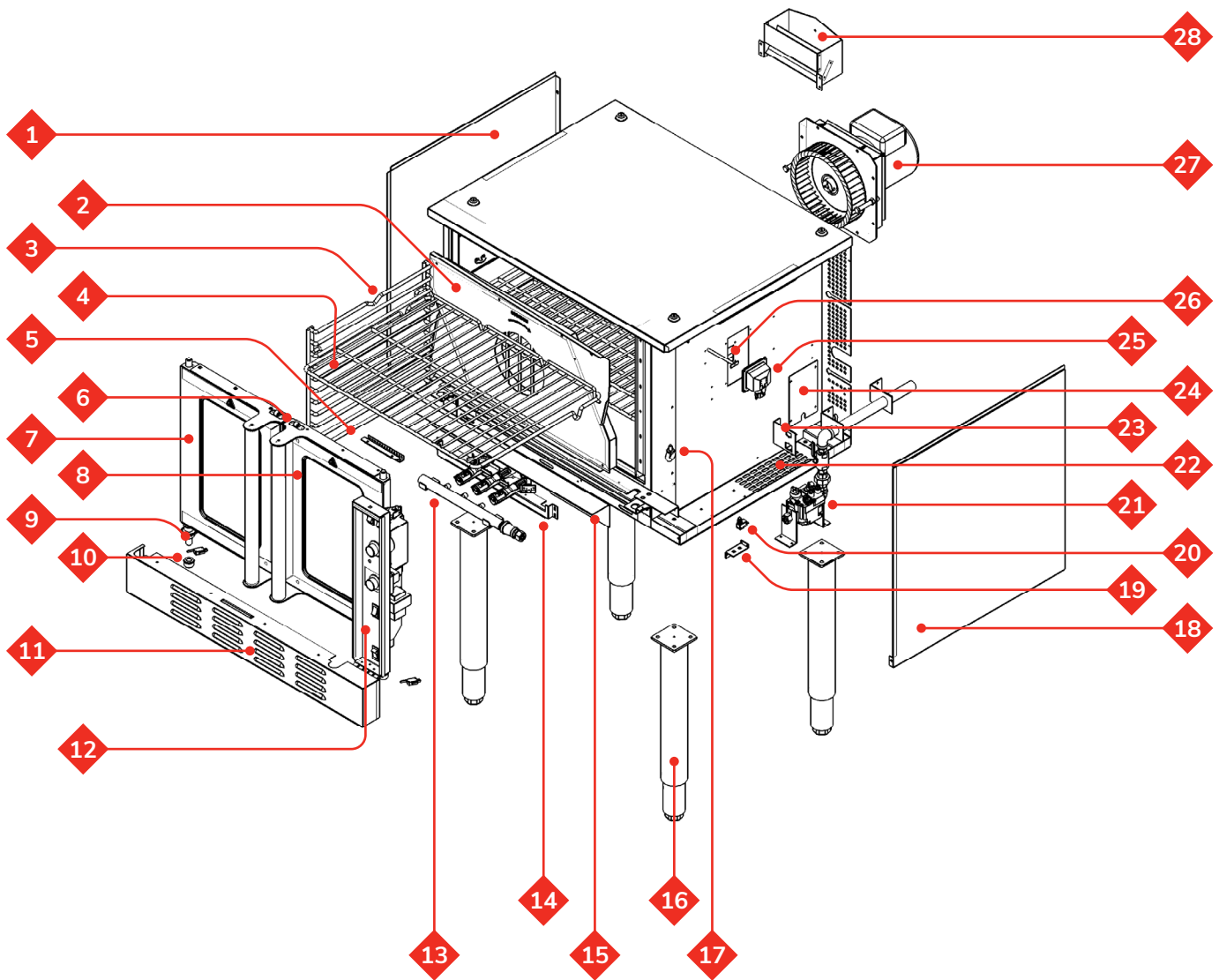
WARNING:

- Do not store or use gasoline or other flammable vapors and liquids in the vicinity of this or any other equipment.
- Improper installation, adjustment, alteration, service, or maintenance could lead to property damage, injury, or death. Read the installation, operating, and maintenance instructions thoroughly before installing or servicing CPG equipment. This manual must be retained for future reference.
- A factory authorized agent must handle all maintenance and repair.

Gas Pressure

- The appliance and its individual shutoff valve (to be supplied by user) must be disconnected from the gas supply piping system during any pressure testing of that system at test pressures in excess of 1/2 PSI (3.45 kPa).
- The appliance must be isolated from the gas supply piping system by closing its individual manual shut-off valve during any pressure testing of the gas supply piping system at test pressures equal to or less than 1/2 PSI (3.45 kPa).

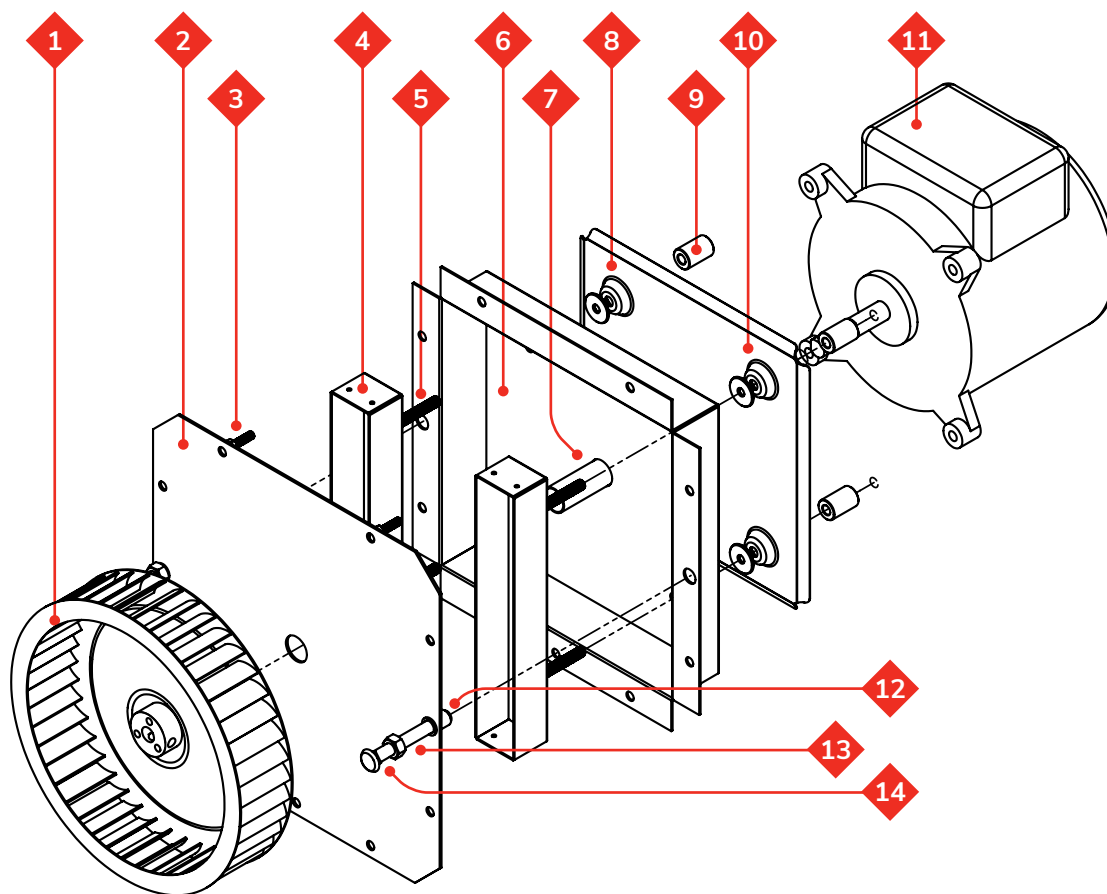
Whole Assembly



Whole Assembly

Part #	Description	CPG Item #	QTY
1	SIDE PANEL (LEFT)	—	1
2	FAN COVER	35165002009	1
3	RACK GUIDE	351110577	2
4	OVEN RACK	351110578	3
5	TEMPERATURE PROBE GUARD	351228051023	1
6	LEFT DOOR HEAT SHIELD	35165002060	1
7	LEFT DOOR ASSEMBLY	35165002054	1
8	RIGHT DOOR ASSEMBLY	35165002053	1
9	DOOR SWITCH	351080079	2
10	DOOR SHAFT BUSHING	351201928	4
11	LOWER FRONT COVERPLATE	—	1
12	CONTROL PANEL ASSEMBLY	—	1
13	MANIFOLD ASSEMBLY	—	1
14	BURNER ASSEMBLY	35165002019	1
15	FRONT COVERPLATE	—	1
16A	LEG ASSEMBLY	351090159	4
16B	ADJUSTABLE FOOT	351302090088	4
17	SCREW	—	1
18	RIGHT SIDE PANEL	—	1
19	FIXED PLATE (TRAVEL SWITCH)	—	1
20	MICRO SWITCH	351080021	1
21	GAS PIPELINE ASSEMBLY	—	1
22	HOUSING ASSEMBLY	—	1
23	FIXED PLATE	—	1
24	COVERPLATE	—	1
25	OVEN LIGHT	351130151	1
26	TEMPERATURE PROBE	351170069	1
27	MOTOR INSTALLATION ASSEMBLY	—	1
28	CHIMNEY	—	1

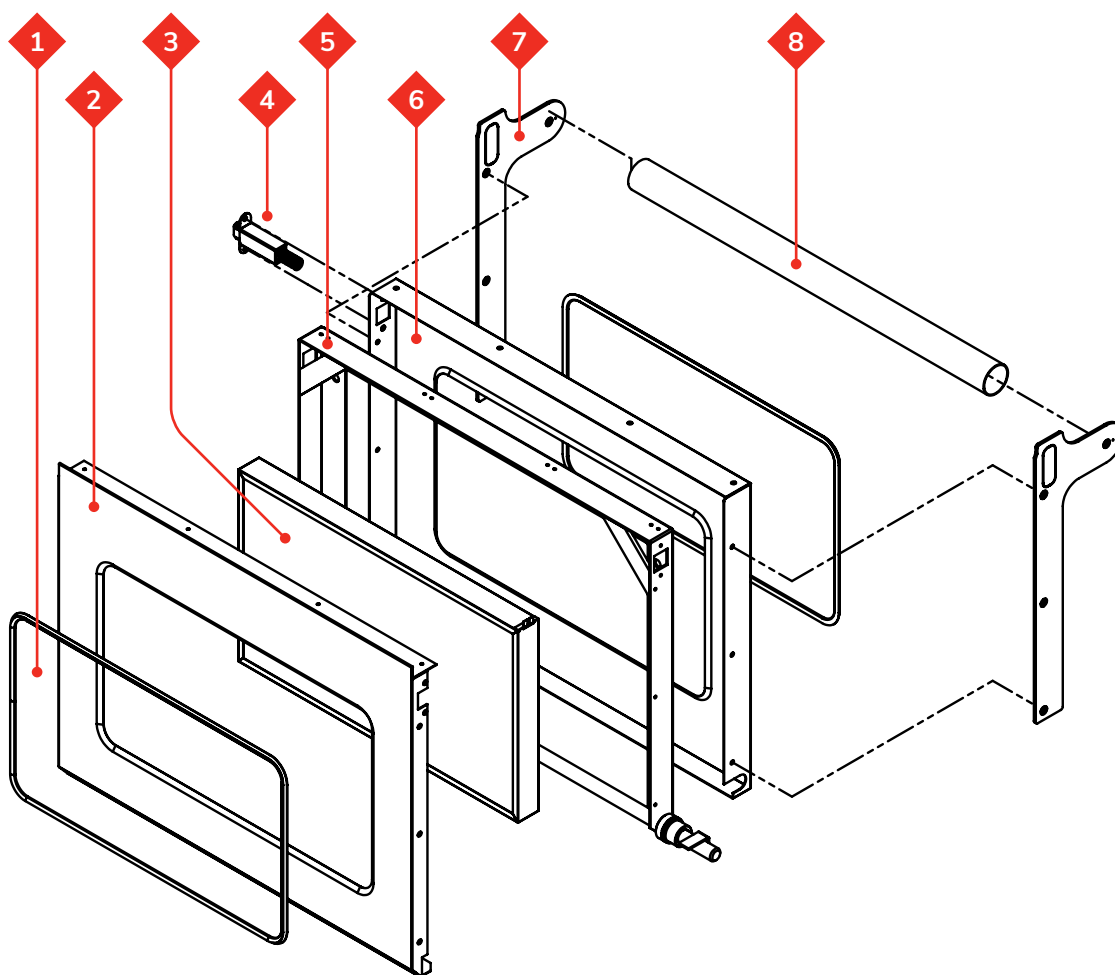
Motor Assembly



Motor Assembly

Part #	Description	CPG Item #	QTY
1	BLOWER WHEEL	351010263	1
2	HEAT SHIELD	—	1
3	BOLT	—	2
4	REINFORCEMENT PLATE	—	2
5	BOLT	—	4
6	HEAT SHIELD	—	1
7	BUSHING	—	1
8	THERMAL INSULATION WASHER	—	4
9	PILLAR	351202328	4
10	BAFFLE	—	1
11	MOTOR	351010262	1
12	RIVET NUT	—	2
13	NUT	—	2
14	BOLT	—	2

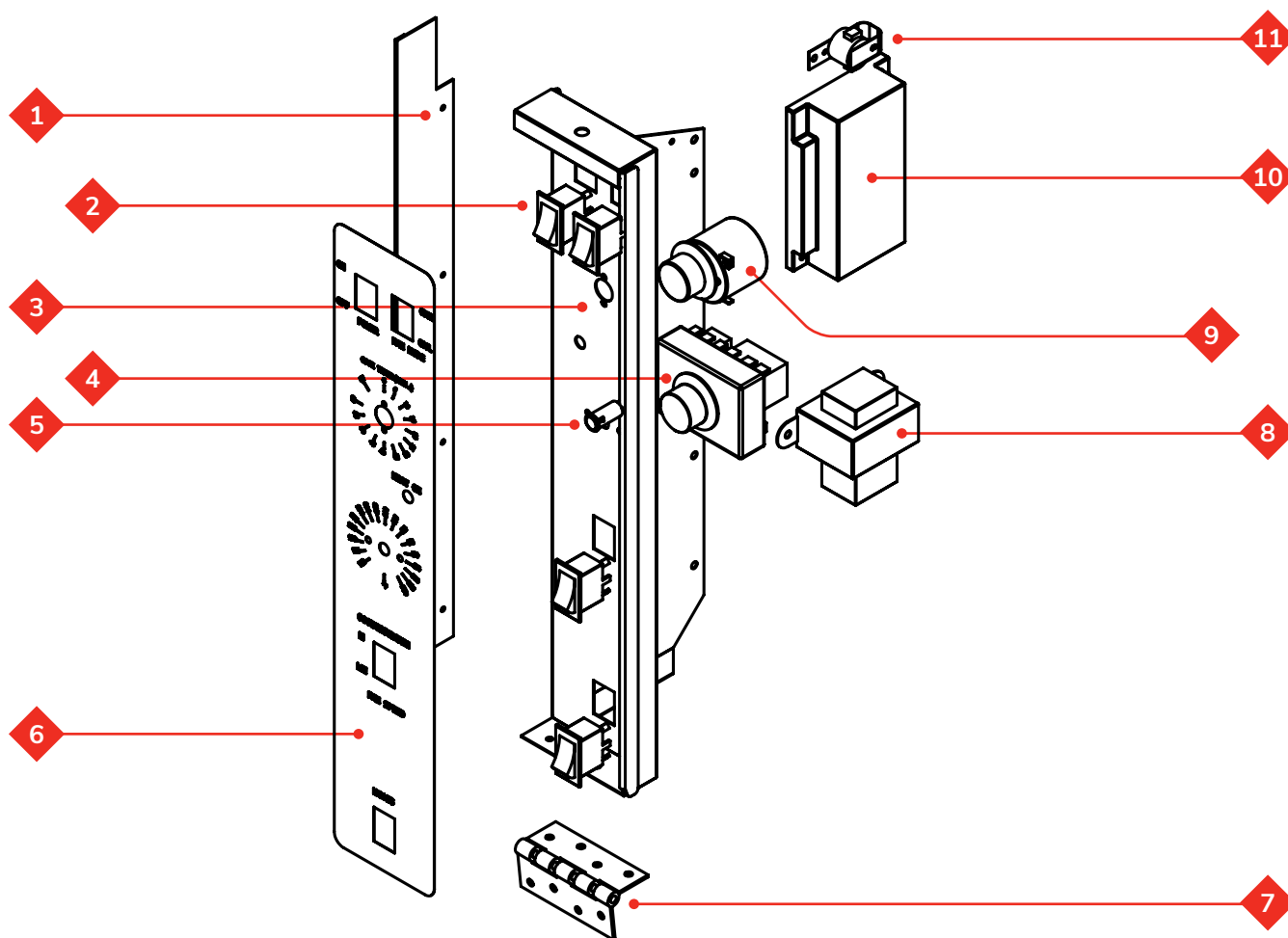
Door Assembly



Door Assembly

#	Description	Item #	QTY
1	GASKET	—	2
2	INTERIOR PLATE	—	1
3	DOOR GLASS FRAME ASSEMBLY	—	1
4	DOOR STOP ASSEMBLY	35165002016	1
5	DOOR FRAME ASSEMBLY	—	1
6	EXTERIOR PLATE	—	1
7A	LEFT SIDE HANDLE FIXING PLATE	—	1
7B	RIGHT SIDE HANDLE FIXING PLATE	—	1
8	DOOR HANDLE	351070267	1

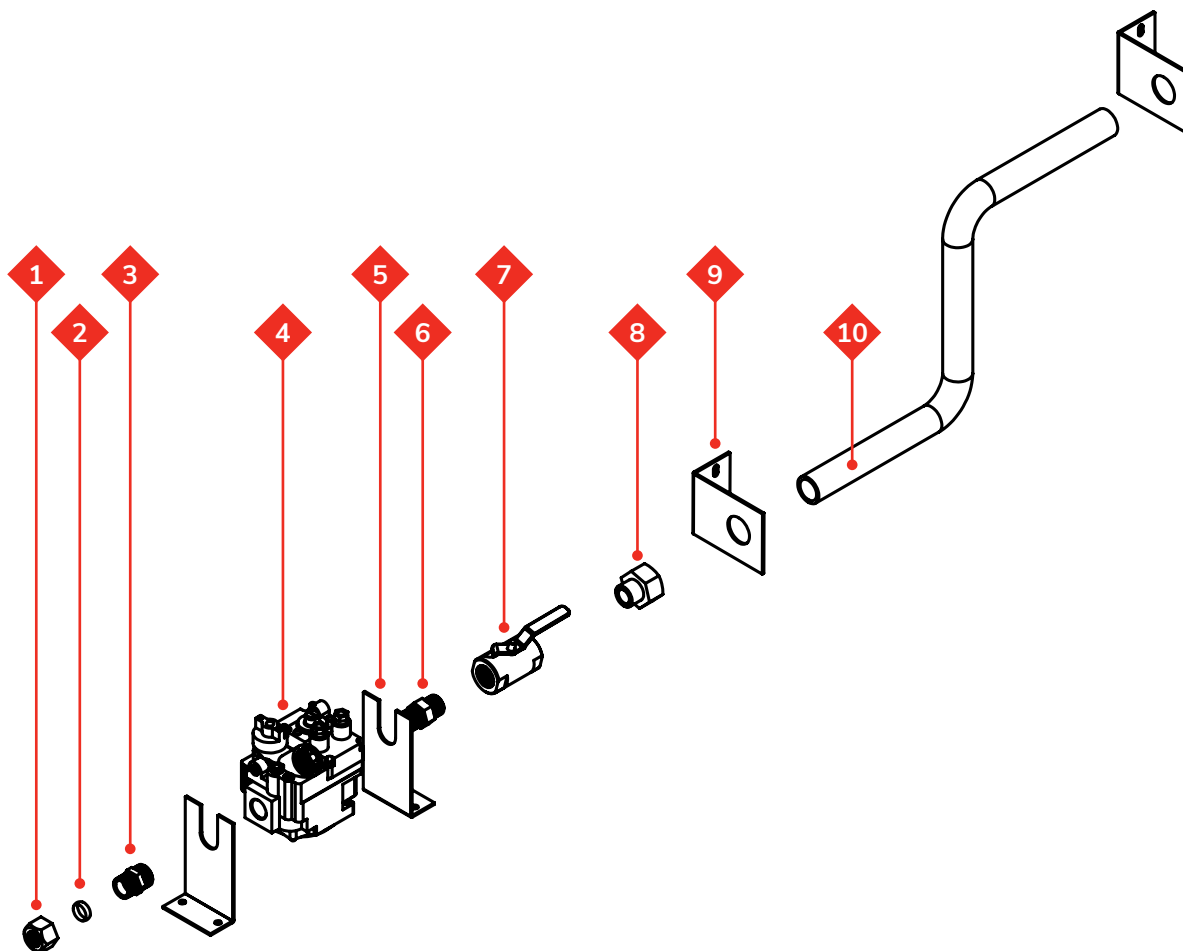
Control Panel



#	Description	Item #	QTY
1	SIDE PANEL (CONTROL PANEL)	—	1
2	ROCKER SWITCH	351080141	4
3	CONTROL PANEL	—	1
4A	THERMOSTAT	351030208	1
4B	TIMER/TEMPERATURE KNOB	351110438	1
5	INDICATOR LIGHT, ORANGE	351130140	1

#	Description	Item #	QTY
6	ADHESIVE STICKER	—	1
7	HINGE	—	1
8	TRANSFORMER	351100149	1
9A	TIMER SWITCH	351120028	1
9B	TIMER/TEMPERATURE KNOB	351110438	1
10	IGNITION CONTROLLER	351150304	1
11	BUZZER	351100086	1

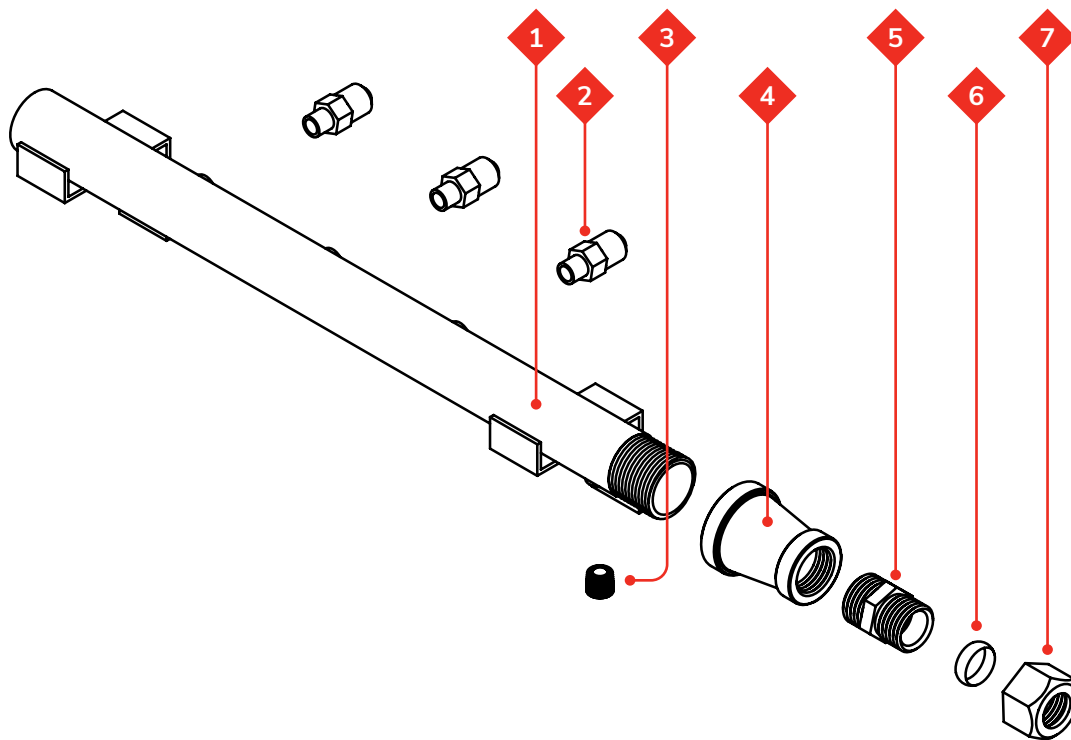
Main Gas Pipe Assembly



#	Description	Item #	QTY
1	NUT	—	1
2	GAS TUBE CLAMP	351140079	1
3	GAS TUBE CONNECTOR	351140077	1
4	SAFETY VALVE - NATURAL GAS	351220079	1
5	FIXED PLATE (VALVE)	—	2
6	STRAIGHT CONNECTOR	—	1

#	Description	Item #	QTY
7	BALL VALVE	—	1
8	CONNECTOR	—	1
9	FIXED PLATE (GAS INLET PIPE)	—	2
10	GAS INLET PIPE ASSEMBLY	—	1

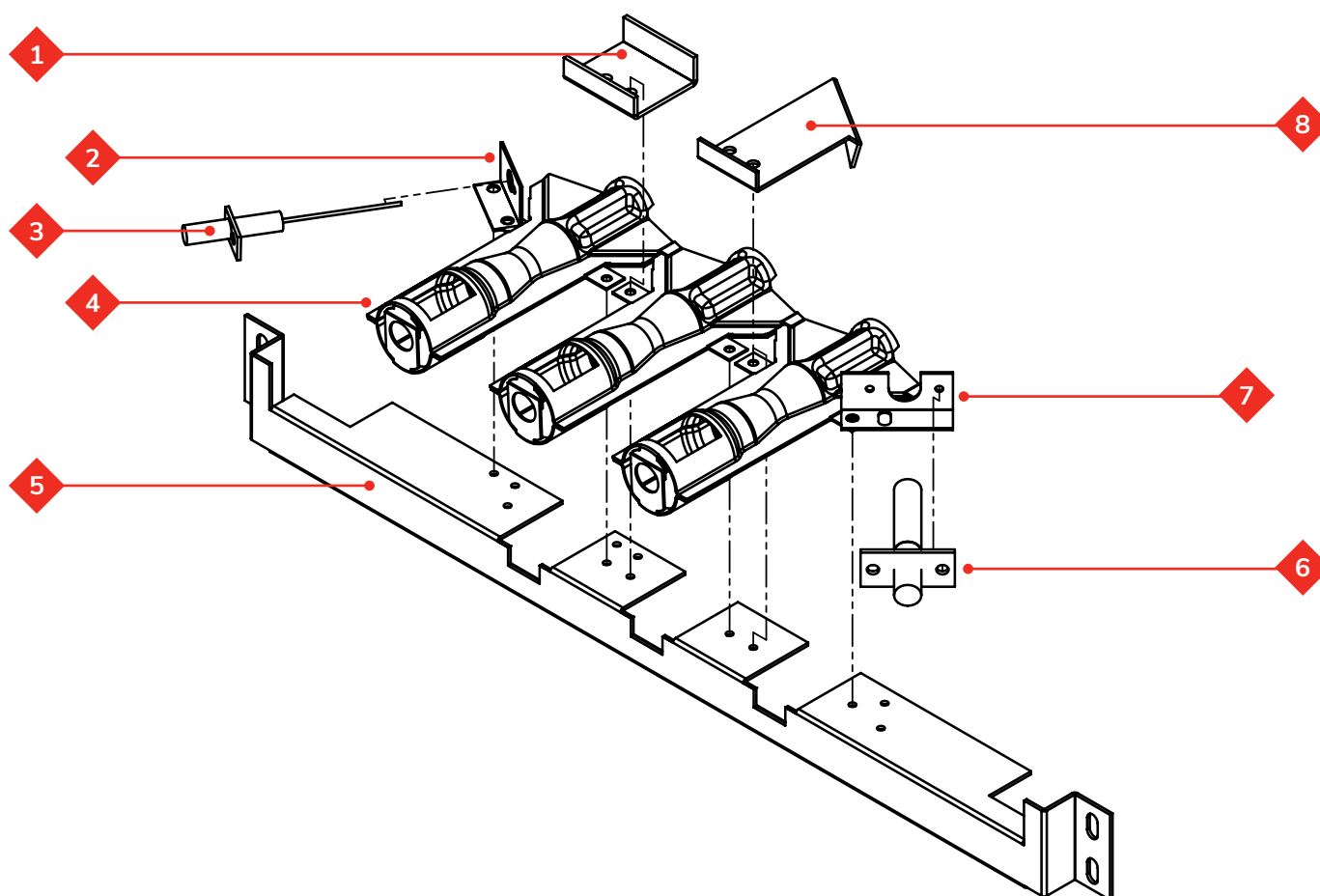
Inlet Gas Pipe



#	Description	Item #	QTY
1	GAS PIPE	—	1
2A	ORIFICE - NATURAL GAS	351302150212	3
2B	ORIFICE - LIQUID PROPANE	351302150211	3
3	TEST PLUG	—	1

#	Description	Item #	QTY
4	STRAIGHT PIPE	—	1
5	GAS TUBE CONNECTOR	351140077	1
6	GAS TUBE CLAMP	351140079	1
7	NUT	—	1

Burner Assembly



#	Description	Item #	QTY
1	PRESSING PLATE (BURNER)	—	1
2	FIXED PLATE (PROBE)	—	1
3	FLAME SENSOR	351220129	1
4	BURNER	—	3

#	Description	Item #	QTY
5	BRACKET (BURNER)	—	1
6	IGNITER	351170039	1
7	FIXER (IGNITER)	—	1
8	FLAME SPREADING PLATE	—	1