

Electric Countertop Convection Ovens



351COHD3A, 351COHT3A, 351COHD4M, 351COHT4M, 351COFT4M, 351COFD4M

REVISED 04/2023

Parts Manual



Congratulations on your purchase of Cooking Performance Group commercial cooking equipment! At Cooking Performance Group, we take pride in the design, innovation, and quality of our products. To ensure optimal performance, we have outlined the following instructions and guidelines in this manual carefully for your review. Cooking Performance Group declines any responsibility in the event users do not follow the instructions or guidelines stated here.

Contents

Product Overview.....	2
Safety Precautions.....	3
351COFD4M.....	4
351COHD4M.....	6
351COHD3A.....	8
351COFT4M.....	10
351COHT4M.....	12
351COHT3A.....	14



Intertek
5008969

Intertek
5008969

Conforms to UL STD. 197
Conforms to CSA C22.2
Conforms to NSF/ANSI STD. 4

Safety Precautions

CAUTION:

Equipment is designed to provide safe and productive processing, cooking, and warming of food products as long as the equipment is used in accordance with the instructions in this manual and is properly maintained. Failure to comply with the following operation instructions could lead to potential hazards and/or unsafe practice and could result in injury and damage to product and property. Owners of this equipment bear the responsibility to make certain that this equipment is used properly and safely, and to strictly follow all the instructions contained in this manual and the applicable requirements of applicable local, state, or federal law.

Do not store or use gasoline or other flammable vapors and liquids in the vicinity of this or any other equipment. Improper installation, adjustment, alteration, service, or maintenance could lead to property damage, injury, or death. Read the installation, operating, and maintenance instructions thoroughly before installing or servicing CPG equipment. This manual must be retained for future reference. A factory authorized agent must handle all maintenance and repair.

Owners should not permit anyone to touch this equipment unless they are over 18 years old, are adequately trained and supervised, and have read and understood this manual. Repairs and conversions are to be made solely by an authorized servicer. Owners should also ensure that no customers, visitors, or other unauthorized personnel come in contact with this equipment. Please remember that the vender cannot anticipate every circumstance or environment in which its equipment will be operated. It is the responsibility of the owner and the operator to remain alert to any hazards posed by the function of this equipment. If you are ever uncertain about a particular task or the proper method of operating this equipment, ask your supervisor. This manual contains a number of precautions to follow to help promote safe use of this equipment. Throughout the manual you will see additional warnings to help alert you to potential hazards.

Warnings affecting your personal safety are indicated by:



Warnings affecting your possible damage to the equipment and property are indicated by:

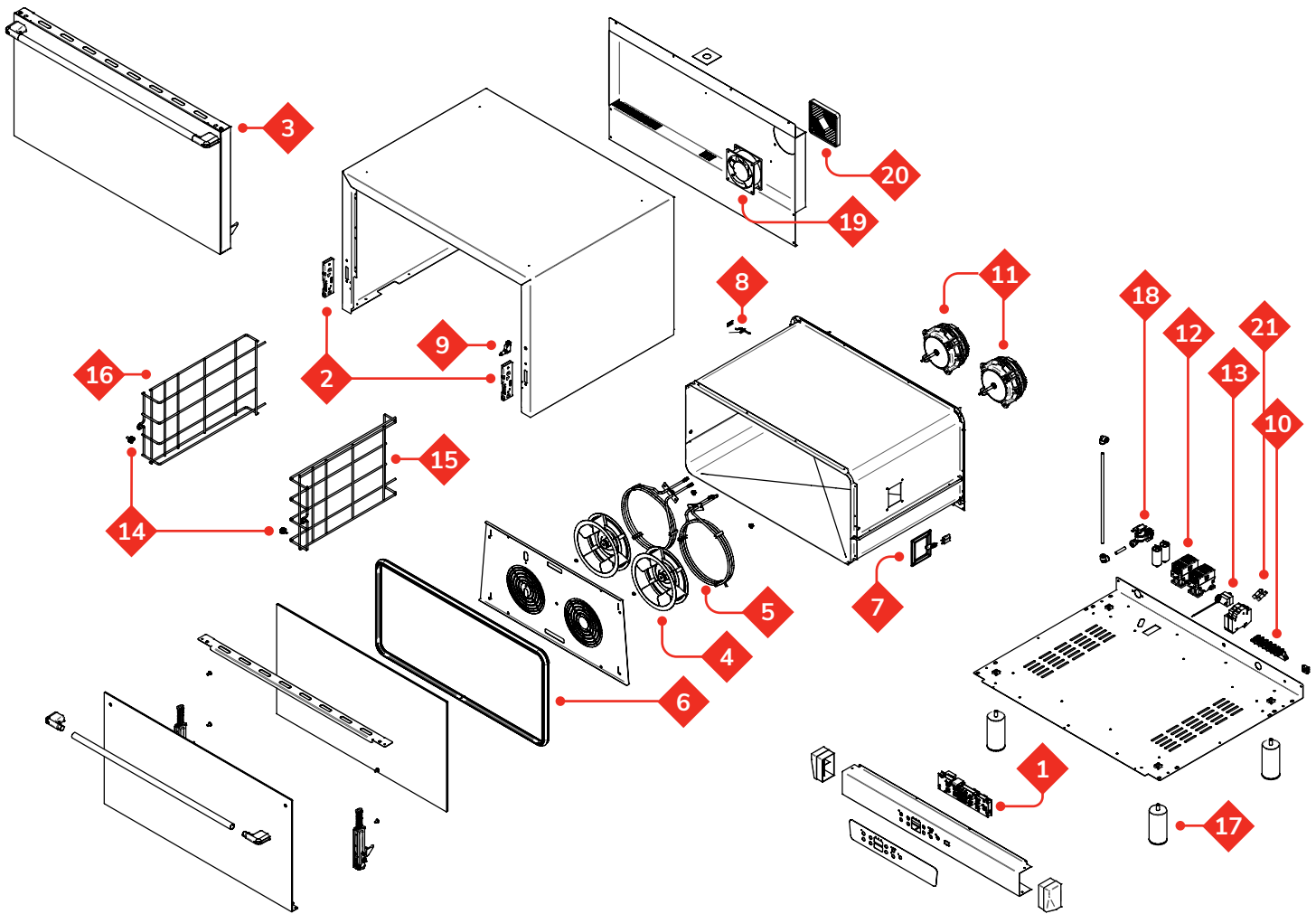


Please remember that this manual or the warning labels do not replace the need to be alert, to properly train and supervise operators, and to use common sense when using this equipment.

351COFD4M List

Part #	CPG Item #	Description	QTY
1	351020013	PC BOARD	1
2	351600011	DOOR HINGE SEAT	2
3	351851811	DOOR ASSEMBLY	1
4	351600131	BLOWER WHEEL	2
5	351020326	HEATING ELEMENT	2
6	351040141	DOOR GASKET	1
7	351020061	CAVITY LIGHT	1
8	351020014	TEMPERATURE PROBE	1
9	351020021	MICRO SWITCH	1
10	351020033	TERMINAL BLOCK	1
11	351020321	FAN MOTOR	2
12	351020052	CONTACTOR	2
13	351020036	SAFETY THERMOSTAT	1
14	351700151	SCREW RACK GUIDE	2
15	351600132	RIGHT WIRE RACK GUIDE	1
16	351600161	LEFT WIRE RACK GUIDE	1
17	351600041	ADJUSTABLE FEET	4
18	351020111	SINGLE ELECTRIC VALVE	1
19	351020091	COOLING FAN	1
20	351040011	COOLING FAN FILTER	1
21	351020016	ELECTRIC FUSE	2

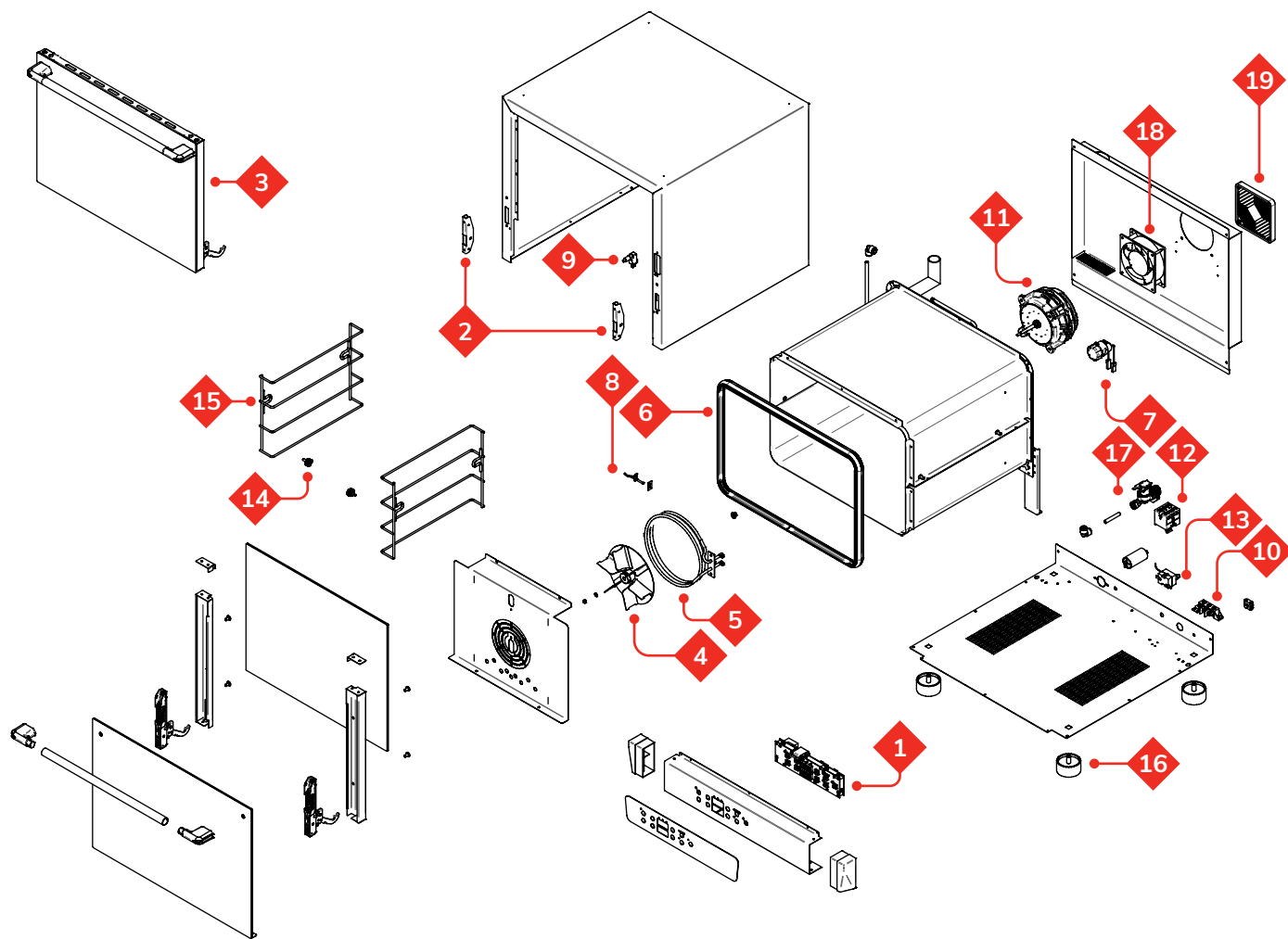
351COFD4M Diagram



351COHD4M List

Part #	CPG Item #	Description	QTY
1	351020013	PC BOARD	1
2	351600022	DOOR HINGE SEAT	2
3	351851831	DOOR ASSEMBLY	1
4	351600111	BLOWER WHEEL	1
5	351020325	HEATING ELEMENT	1
6	351040141	DOOR GASKET	1
7	351020051	CAVITY LIGHT	1
8	351020014	TEMP PROBE	1
9	351020021	MICRO SWITCH	1
10	351020033	TERMINAL BLOCK	1
11	351020321	FAN MOTOR	1
12	351020043	BREAKER	1
13	351020036	SAFETY THERMOSTAT	1
14	351700151	SCREW RACK GUIDE	4
15	351600151	WIRE RACK GUIDE	2
16	351500011	PLASTIC FEET	4
17	351020111	SINGLE ELECTRIC VALVE	1
18	351020091	COOLING FAN	1
19	351040011	COOLING FAN FILTER	1

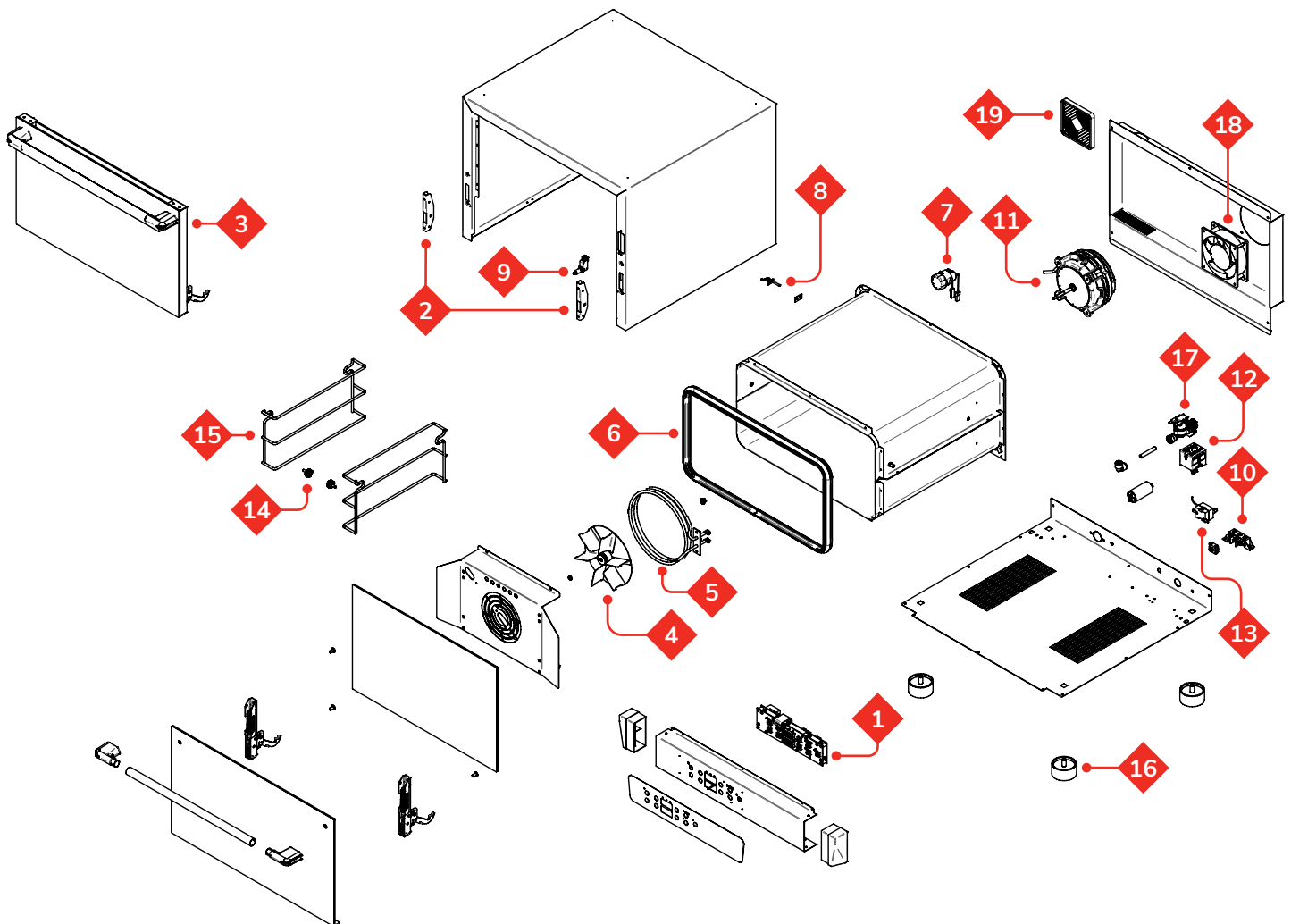
351COHD4M Diagram



351COHD3A List

Part #	CPG Item #	Description	QTY
1	351020201	PC BOARD	1
2	351600022	DOOR HINGE SEAT	2
3	351851821	DOOR ASSEMBLY	1
4	351600111	BLOWER WHEEL	1
5	351020311	HEATING ELEMENT	1
6	351040141	DOOR GASKET	1
7	351020032	CAVITY LIGHT	1
8	351020014	TEMP PROBE	1
9	351020021	MICRO SWITCH	1
10	351020033	TERMINAL BLOCK	1
11	351020161	FAN MOTOR	1
12	351020035	BREAKER	1
13	351020036	SAFETY THERMOSTAT	1
14	351700151	SCREW RACK GUIDE	4
15	351600151	WIRE RACK GUIDE	2
16	351500011	PLASTIC FEET	4
17	351020053	SINGLE ELECTRIC VALVE	1
18	351020181	COOLING FAN	1
19	351040011	COOLING FAN FILTER	1

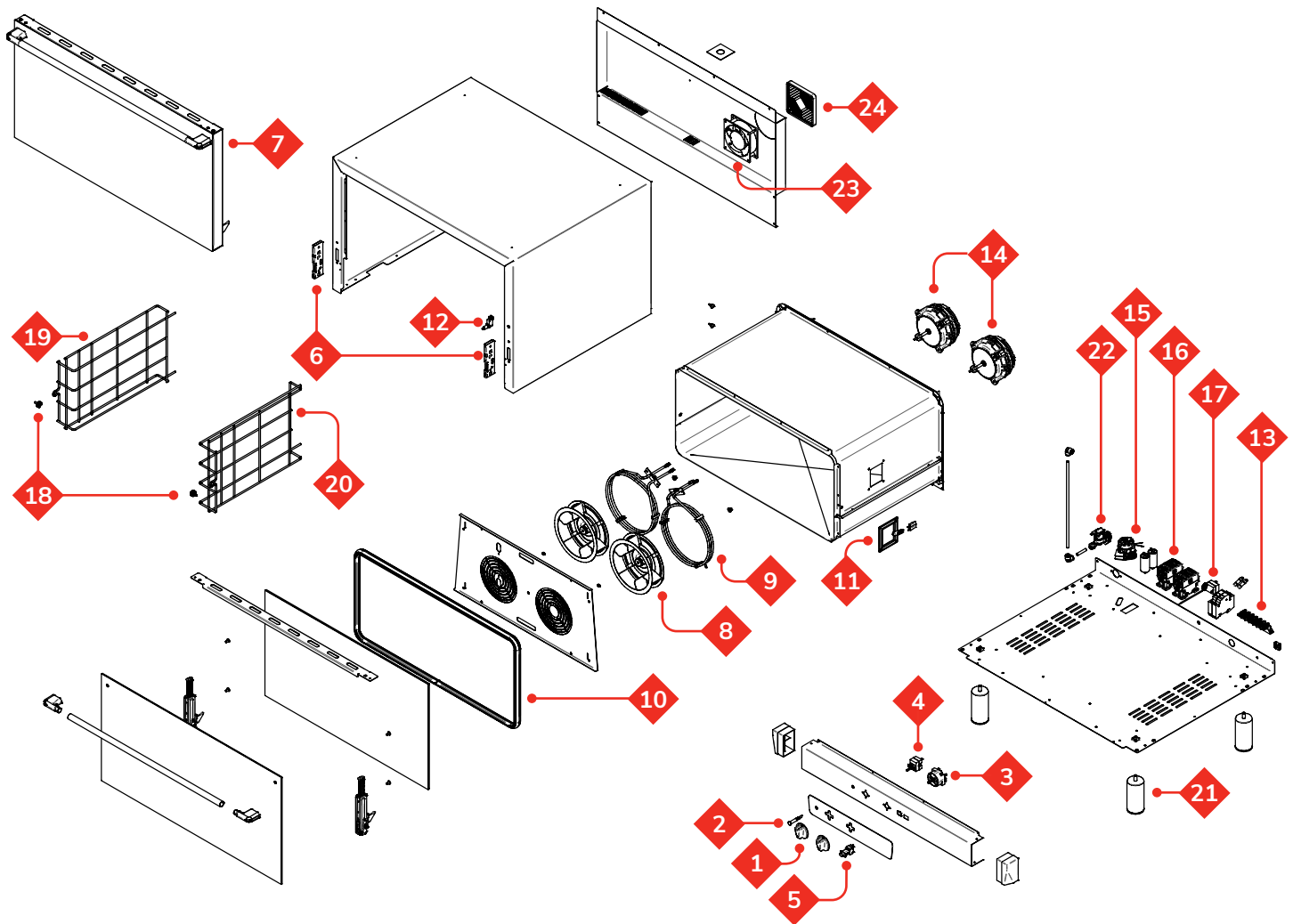
351COHD3A Diagram



351COFT4M List

Part #	CPG Item #	Description	QTY
1	351040111	TEMPERATURE/TIMER KNOB	2
2	351020041	INDICATOR LIGHT	1
3	351020011	LINEAR TIMER	1
4	351020012	CHAMBER THERMOSTAT	1
5	351020042	HUMID BUTTON	1
6	351600011	DOOR HINGE SEAT	2
7	351851811	DOOR ASSEMBLY	1
8	351600131	BLOWER WHEEL	2
9	351020326	HEATING ELEMENT	2
10	351040141	DOOR GASKET	1
11	351020061	CAVITY LIGHT	1
12	351020021	MICRO SWITCH	1
13	351020033	TERMINIAL BLOCK	1
14	351020321	FAN MOTOR	2
15	351020015	MTR DIRECTION TIMED SWITCH	1
16	351020052	CONTACTOR	2
17	351020036	SAFETY THERMOSTAT	1
18	351700151	SCREW RACK GUIDE	2
19	351600132	RIGHT WIRE RACK GUIDE	1
20	351600161	LEFT WIRE RACK GUIDE	1
21	351600041	ADJUSTABLE FEET	4
22	351020111	SINGLE ELECTRIC VALVE	1
23	351020091	COOLING FAN	1
24	351040011	COOLING FAN FILTER	1

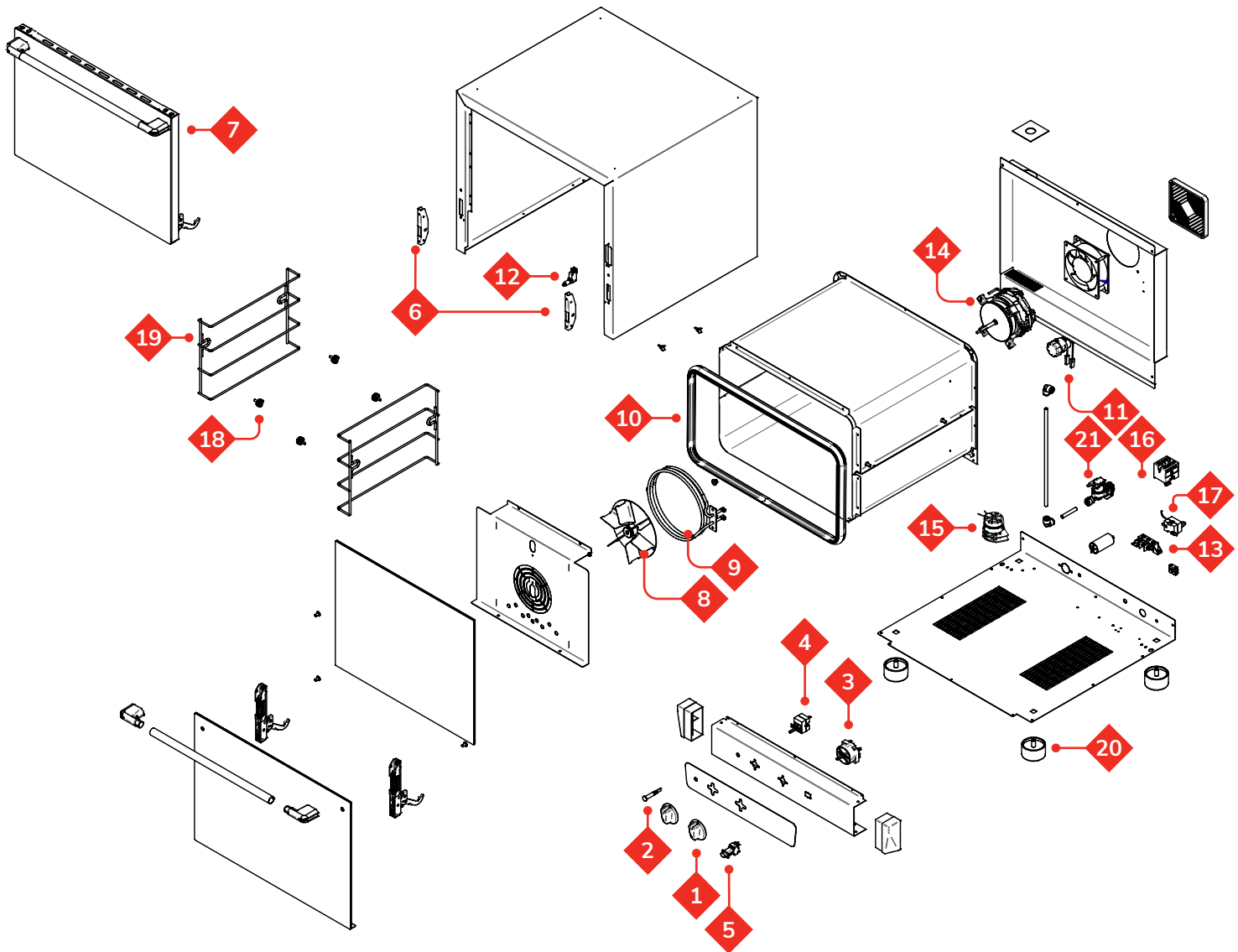
351COFT4M Diagram



351COHT4M List

Part #	CPG Item #	Description	QTY
1	351040111	TEMPERATURE/TIMER KNOB	2
2	351020041	INDICATOR LIGHT	2
3	351020011	LINEAR TIMER	1
4	351020012	CHAMBER THERMOSTAT	1
5	351020042	HUMID BUTTON	1
6	351600022	DOOR HINGE SEAT	2
7	351851831	DOOR ASSEMBLY	1
8	351600111	BLOWER WHEEL	1
9	351020325	HEATING ELEMENT	1
10	351040141	DOOR GASKET	1
11	351020051	CAVITY LIGHT	1
12	351020021	MIRCRO SWITCH	1
13	351020033	TERMINAL BLOCK	1
14	351020321	FAN MOTOR	1
15	351020015	MTR DIRECTION TIMED SWITCH	1
16	351020043	BREAKER	1
17	351020036	SAFETY THERMOSTAT	1
18	351700151	SCREW RACK GUIDE	4
19	351600151	WIRE RACK GUIDE	2
20	351500011	PLASTIC FEET	4
21	351020111	SINGLE ELECTRIC VALVE	1

351COHT4M Diagram



351COHT3A List

Part #	CPG Item #	Description	QTY
1	351040111	TEMPERATURE/TIMER KNOB	2
2	351020031	INDICATOR LIGHT	1
3	351020011	LINEAR TIMER	1
4	351020012	CHAMBER THERMOSTAT	1
5	351020042	HUMID BUTTON	1
6	351600022	DOOR HINGE SEAT	2
7	351851821	DOOR ASSEMBLY	1
8	351600111	BLOWER WHEEL	1
9	351020311	HEATING ELEMENT	1
10	351040141	DOOR GASKET	1
11	351020032	CAVITY LIGHT	1
12	351020021	MICRO SWITCH	1
13	351020033	TERMINAL BLOCK	1
14	351020161	FAN MOTOR	1
15	351020034	REVERSING GEAR	1
16	351020035	BREAKER	1
17	351020036	SAFETY THERMOSTAT	1
18	351700151	SCREW RACK GUIDE	2
19	351600151	WIRE RACK GUIDE	2
20	351500011	PLASTIC FEET	4
21	351020053	SINGLE ELECTRIC VALVE	1

351COHT3A Diagram

