



## Compact Vertical Bun Toasters

#177CPBTR66A



Intertek  
9900299



Intertek  
9900299



NEMA  
5-20P

#177CPBTR66B & #177CPBTR66D



Intertek  
9900299



Intertek  
9900299



NEMA  
6-20P

CONFORMS TO NSF/ANSI STD. 4  
CONFORMS TO UL STD. UL-197

### Models:

#177CPBTR66A #177CPBTR66B #177CPBTR66D

### Warning:

Improper installation, adjustment, alteration, service, or maintenance can cause property damage, or death. Read the installation, operating, and maintenance instructions thoroughly before installing or servicing this equipment. If installing the fryer with propane (LP) gas, a commercially approved regulator **MUST** be installed on the fryer in addition to the tank regulator. Units installed without an external appliance regulator will cause damage to parts and will void the warranty.

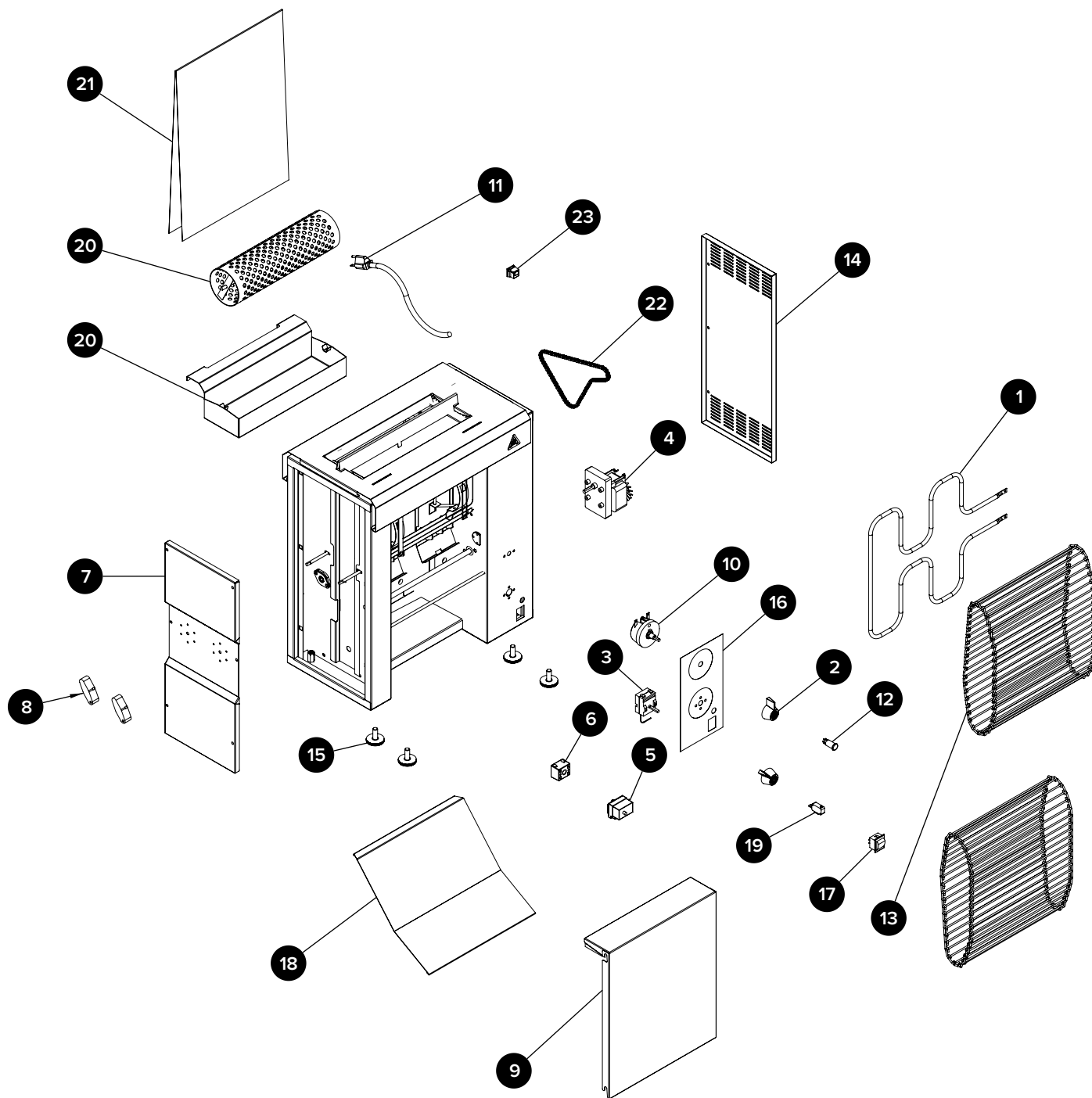
### For Your Safety:

Do not store or use gasoline or other flammable vapors or liquids in the vicinity of this or any other appliance.

### Note:

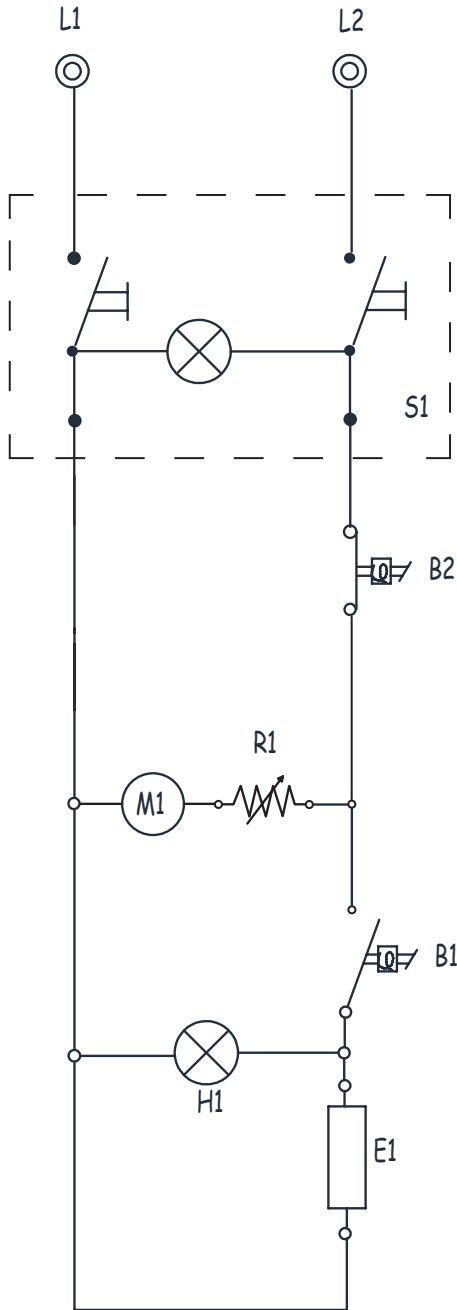
Please read instructions thoroughly. Indoor use only.

## Parts Diagram



Key	Description	Item Number	QTY
1A	HEATING ELEMENT, FOR 120V	177PCPBEL2	1
1B	HEATING ELEMENT, FOR 208V	177PCPBEL3	1
1C	HEATING ELEMENT, FOR 240V	177PCPBEL1	1
2	TEMPERATURE/SPEED CONTROL KNOB	351CROP120	2
3	THERMOSTAT	177PCPBTHRM	1
4A	GEAR MOTOR, FOR 120V	177PCPBMR2	1
4B	GEAR MOTOR, FOR 208V AND 240V	177PCPBMR1	1
5	SAFETY THERMOSTAT	177PCPBLIMIT	1
6	TERMINAL BLOCK	—	1
7	LEFT SIDE COVER	—	1
8	THICKNESS ADJUSTER KNOB	177PCPBADJST	2
9	OUTER COVER	—	2
10A	SPEED CONTROL, FOR 120V	177PCPBCTRL2	1
10B	SPEED CONTROL, FOR 208V AND 240V	177PCPBCTRL1	1
11A	POWER CORD, NEMA 5-20, FOR 120V	177PCBPBCRD2	1
11B	POWER CORD, NEMA 6-20, FOR 208V AND 240V	177PCBPBCORD1	1
12	RED INDICATOR LIGHT	—	1
13	WIRE CONVEYOR	177PCPBCVYR	2
14	RIGHT SIDE PANEL	—	1
15	FEET, 4/PACK	177PCPBFEET	1
16	PANEL COVER	—	1
17	ILLUMINATED ROCKER SWITCH	351CROP110	1
18	EXIT CHUTE/SLIDE	177PCPBCHUTE	1
19	MICRO SWITCH	—	1
20	BUTTER ROLLER ACCESSORY (OPTIONAL)	177CPBTBR	1
21	TEFLON SHEET	—	1
22	DRIVE CHAIN	177PCPBCHAIN	1
23	CABLE STRAIN RELIEF	—	1

## Wiring Diagram



Legend	Description
B1	CONTROL THERMOSTAT
E1	ELEMENT
H1	PILOT LAMP FOR THERMOSTAT
S1	MAIN SWITCH
M1	CONVEYOR MOTOR
B2	SAFETY THERMOSTAT
R1	SPEED CONTROL