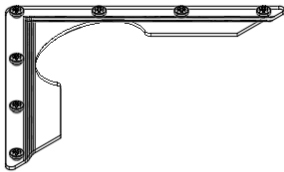


Assembly Instructions — Classic Activity Leg

Leg Designed for use with Classic Activity Tables.

Tools Required:

- #2 Phillips head screw driver or cordless screwdriver with #2 Phillips bit
- Soft Mallet



Pre-Installed Leg Mounting Bracket

Step 1

Step 1

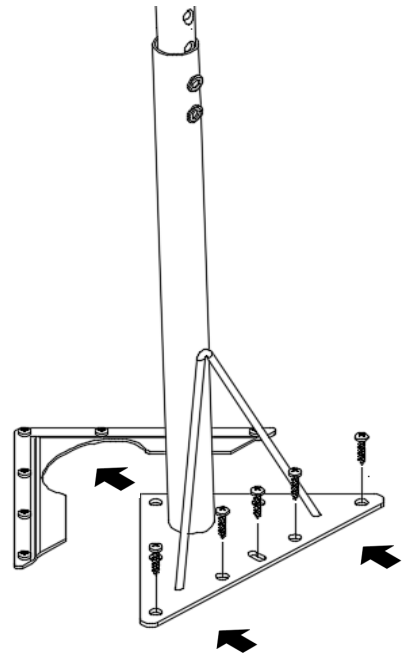
Place the table topside down on a clean, non scratching surface.

Heavy duty mounting brackets are pre-installed to the underside of the table top, ensuring quick assembly and perfect alignment of the legs.

Slide leg fully into the pre-installed bracket. A soft mallet may be used to aid in fully engaging leg into bracket, if needed.

Install Phillips head screws (provided) through the slotted center hole and into the table top. Tighten fully and repeat for remaining four holes.

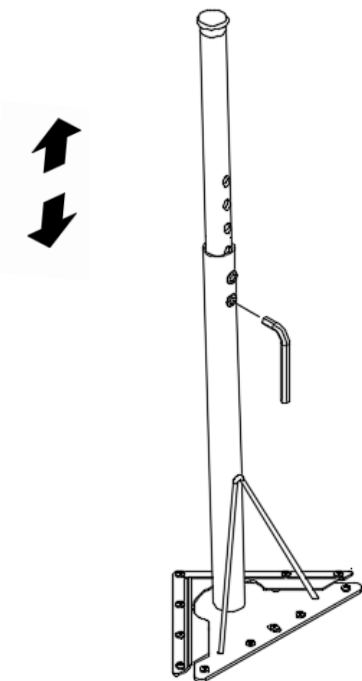
Repeat step 2 for the remaining legs.



Step 2

Adjust each leg to desired height using the provided Hex wrench.

Using two people, turn the table upright and rotate Nylon Glides as necessary to level table.



SCAN ME—For Assembly Video