



NATIONAL TYPE EVALUATION PROGRAM

Certificate of Conformance

for Weighing and Measuring Devices

For:

Weighing/Load Receiving Element
Load Cell, Electronic
Model: 334BSXXXTX
Capacity: 25 lb / 10 kg to 1000 lb / 500kg
 e_{min} : 0.005 lb / 0.002 kg
 n_{max} : 3000 to 5000
Platform sizes: 320x320, 300x400, 400x500, 480x600 mm
Accuracy Class: III

Submitted By:

Clark Associates Inc. DBA AvaWeigh
2205 Old Philadelphia Pike
Lancaster, PA 17602
Tel: 717-392-7974 x 624
Contact: Brian McBrearty
Email: bmbrearty@clarkinc.biz
Website: clarkassociatesinc.biz

Standard Features and Options

334BSXXXTX where XXX is capacity.

Construction:

- Stainless Steel Frame
- Mild Steel Frame
- Stainless platter
- Level bubble
- Leveling feet

Load Cells used during evaluation:

Zemic (CC 11-012, 11-062, 12-006) & HOPE (CC 15-0479A1) or any NTEP Certified and compatible Load cell with the same n_{max} .

Indicating Element used during evaluation:

Measuretek (CC 15-068) or any NTEP Certified and compatible indicating element.

This device was evaluated under the National Type Evaluation Program and was found to comply with the applicable technical requirements of *Handbook 44: Specifications, Tolerances and Other Technical Requirements for Weighing and Measuring Devices*. Evaluation results and device characteristics necessary for inspection and use in commerce are on the following pages. *Editorial changes, not affecting the type or metrological content, corrected this certificate.

Mahesh Albuquerque
Chair, NCWM, Inc.

Ivan Hankins
Chair, NTEP Committee
Issued: October 17, 2022

1135 M Street, Suite 110 / Lincoln, Nebraska 68508

The National Conference on Weights and Measures (NCWM) does not approve, recommend or endorse any proprietary product or material, either as a single item or as a class or group. Results shall not be used in advertising or sales promotion to indicate explicit or implicit endorsement of the product or material by the NCWM.



Clark Associates Inc. DBA as AvaWeigh
Weighing/Load Receiving Element / 334BSXXXTX

Application: General purpose weighing applications when interfaced with a NTEP certified and compatible indicating element.

Identification: The required information is on an adhesive badge located on the frame.

Sealing: The weighing element does not have any adjustable components. Sealing of set-up and calibration parameters are performed by the indicator which is sealed according to the manufactures instructions for the indicating element used.

Test Conditions: This Certificate supersedes Certificate of Conformance Number 20-076A1 and was issued to indicate a company name change from Clark Associates Inc. to Clark Associates Inc. DBA AvaWeigh. No additional testing was required. Previous test conditions are listed below for reference.

Certificate of Conformance Number 20-076A1: This certificate supersedes Certificate of Conformance Number 20-076 and was issued without additional testing to reactivate Certificate of Conformance 20-076 without lapse and update contact information. Previous test conditions are listed below for reference.

Certificate of Conformance Number 20-076: This certificate is issued based upon the following tests and upon information provided by the manufacturer. The emphasis of the evaluation was on device design, marking, operation and compliance with influence factor requirements. Three models of the 334BS series weighing/load receiving elements were submitted for evaluation. A 25 lb/10 kg x 0.005 lb/0.002 kg -300 x 400 MM platform, 250 lb/100 kg x 0.05 lb/0.02 kg - 400x500mm platform and 1000 lb/500 kg x 0.2 lb /0.1 kg – 480 x 600 MM platform. Each of the weighing elements were interfaced with a Measuretek Indicator (NTEP CC 15-068A1) for evaluation. Several increasing/decreasing load and shift tests were performed. The scales were tested over a temperature range of -10 °C to 40 °C (14 °F to 104 °F). A load of approximately 1/2 capacity was applied to each of the scales over 100 000 times. Tests were conducted periodically during this time. After the permanence tests were completed, the shift test, discrimination and zone of uncertainty tests were repeated.

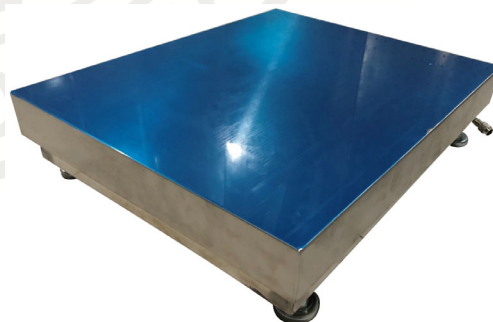
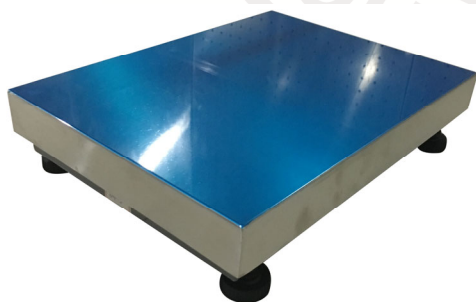
Evaluated By: M. Kelley (OH), J. Gibson (OH) 20-076; M. Manheim (NCWM) 20-076A1

Type Evaluation Criteria Used: *Handbook 44 Specifications, Tolerances, and Other Technical Requirements for Weighing and Measuring Devices*, 2020 Edition. *NCWM Publication 14: Weighing Devices*, 2020 Edition.

Conclusion: The results of the evaluation and information provided by the manufacturer indicate the device complies with applicable requirements.

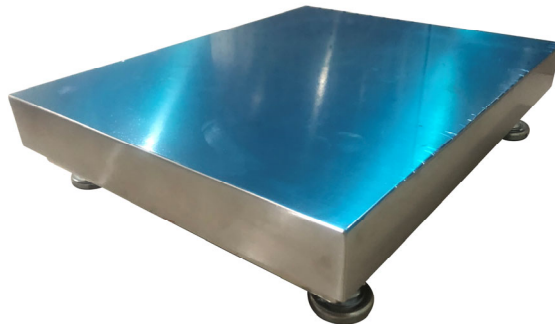
Information Reviewed By: D. Flocken (NCWM) 20-076, 20-076A1, 20-076A2

Example(s) of Device:





Clark Associates Inc. DBA as AvaWeigh
Weighing/Load Receiving Element / 334BSXXXTX



Frame



Label Location



Label Location