

COFFEE BREWING SYSTEMS

CBS-1230 Plus Brewers 3.0-4.0 LITER BREWING SYSTEM

Shown with D041 3.0L Airpot & D451 4.0L / 1G LUXUS® Thermal Server



PLUG AND PLAY OPERATION

Batch buttons are pre-programmed at the factory. If desired the USB port can be used to upload and download recipes.



CASCADING SPRAY DOME

Patented design provides even saturation of the coffee bed for maximum extraction. Lime resistant design makes for less service calls.

DISPENSERS

CBS-1230 Plus Brewers

DISPENSERS

D041

3.0 Liter
Pump Lever
Airpot



D063

3.8 Liter
Pump Lever
Airpot



FOR USE WITH
2.5" OPTIONAL LEGS



D451

4.0 Liter / 1 Gallon
LUXUS® Thermal
Server
L4S-10



D482

4.0 Liter / 1 Gallon
LUXUS® Sight
Gauge Server
LGS-10



SERVING STATION FOR THERMAL SERVERS

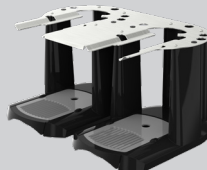
A147

Single Serving
Station for
L4S-10 & LGS-10
S4S-10-1



A148

Twin Serving
Station for
L4S-10 & LGS-10
S4S-10-2



A149

Triple Serving
Station for
L4S-10 & LGS-10
S4S-10-3



All dispensers and serving stations **SOLD SEPARATELY**.



BREW BASKET DESIGN

Advanced brew basket design provides a deeper bed depth and superior thermal insulation for better extraction.



CONTEMPORARY DESIGN

Traditional FETCO core with modern design enhancements fits well in any front-of-house or back of the house application.



ECO MODE

Reduces tank temperature during periods of non-operation to cut down on electricity usage.

ACCESSORIES

CBS-1230 Plus Brewers

BREW BASKETS AND PAPER FILTERS

| Brewer SKU | Brew Basket | Coffee Capacity | Filter Size | Filter SKU | Filter/Case |
|--------------------|------------------------------------|------------------|-------------|------------|-------------|
| All configurations | Standard Plastic / Stainless Steel | Up to 8oz / 227g | 13" x 5" | F002 | 500/cs |

B003218B1

13" x 5"
Stainless Steel
Brew Basket



B014218BN2BK

13" x 5"
Plastic Brew
Basket



F002

13" x 5"
Paper Filters



Contact Customer Service or your Sales Person for more options.

COLORED BREW BASKET HANDLE INSERTS

1023.00180.00

Blue Insert



1023.00190.00

Red Insert



1023.00191.00

Green Insert



1023.00192.00

Orange Insert



LEGS SETUP OPTIONS

Comes standard with 1" legs:

2.5" legs optional to accommodate the 3.8L Airpot.
Order set of 4 legs for 1231 Brewer
and set of 3 legs for 1232 Brewer.

1073.00019.00

1" Legs



1073.00016.00

2.5" Legs



WATER FILTRATION SYSTEM

| Filtration System | SKU | Part | Rated Capacity | Working Pressure | Weight |
|-------------------|------|-----------------------|----------------|-------------------------------------|-------------------|
| Everpure® | A039 | In-Line System | 113,563 liters | 10-125 psi [0.7-8.6 bar], non-shock | 6.0 lbs / 2.7 kg |
| Everpure® | A075 | Replacement Cartridge | 113,563 liters | 10-125 psi [0.7-8.6 bar], non-shock | 6.0 lbs / 2.7 kg |
| BWT Bestmax | A138 | In-Line System | 3,002 liters | 29-116 psi [2-8 bar], non-shock | 11.0 lbs / 5.0 kg |
| BWT Bestmax | A139 | Replacement Cartridge | 3,002 liters | 29-116 psi [2-8 bar], non-shock | 11.0 lbs / 5.0 kg |
| BWT Bestmax | A140 | In-Line System | 4,562 liters | 29-116 psi [2-8 bar], non-shock | 11.0 lbs / 5.0 kg |
| BWT Bestmax | A141 | Replacement Cartridge | 4,562 liters | 29-116 psi [2-8 bar], non-shock | 11.0 lbs / 5.0 kg |

EVERPURE®

In-Line Water
Filtration System



SET INCLUDES: 1ea. commercial quality corrosion resistant filter head 1ea. taste and odor filter cartridge (FETCO® #A075) / 1ea. 3/8" x 4' connection hose / 1 set — mounting bracket and hardware.

- Recommended for large-sized operations
- Taste and odor filter for extremely turbid (cloudy) water
- Granular-activated carbon reduces sediment and chlorine
- Quick-disconnect style head/cartridge design cartridge for effortless replacement
- Durable, corrosion-resistant head includes built-in shutoff valve

BWT BESTMAX

In-Line Water
Filtration System



SET INCLUDES: 1ea. filter cartridge / 1ea. universal filter head / 1ea. wall mounting bracket Braided hose supplies 3/8" and 3/4" compression, in 24" or 48" lengths





- Recommended for small- to medium-sized operations
- Carbonate hardness removal prevents scale deposits and retains minerals
- Granular-activated carbon reduces sediment and chlorine
- Quick-disconnect style head/cartridge design cartridge for effortless replacement
- Durable, corrosion-resistant head includes built-in shutoff valve
- Four bypass settings allows for different water qualities and product preferences







TECHNICAL SPECIFICATIONS

NORTH AMERICA

CBS-1231 Plus Brewer

| ELECTRICAL | | | | | | | | | |
|-------------------------------------|----------------------------------|--------------------------------------|------------------------------|-------|--------------------|----------------------|-----------------------|-----------------------|---|
| Brewer SKU | Voltage | Heater Config. | Phase | Wires | kW | Connection | Max Amp Draw | [Gal] / [L] Hour | Certification |
| E1231US-1A115-PM001 | 120 | 1 x 1.5 kW | 1 | 2+G | 1.5 | NEMA 5-15P | 13.0 | 4.0 / 15.1 |   |
| E1231US-1A123-PM002 | 120 | 1 x 2.3 kW | 1 | 2+G | 2.3 | NEMA 5-20P | 19.7 | 6.1 / 23.2 | |
| E1231US-1X117-PM001 DUAL VOLTAGE | 120 | 1 x 1.7 kW | 1 | 2+G | 1.7 | NEMA 5-15P | 14.7 | 4.5 / 17.1 |   |
| | 120/208-240 | 2 x 1.7 kW | 1 | 3+G | 3.4 | Terminal Block | 12.8-14.7 | 7.9 / 30.0 | |
| WATER | | | | | | | | | |
| Water Inlet | Water Pressure [psig] / [Bar] | Minimum Flow Rate [gpm] / [L/min] | Tank Capacity [Gal] / [L] | | CUPS PER HOUR | | | | |
| 3/8" Male Flare | 20-75 / 1.37-5.17 | 1.50 / 5.68 | 3.00 / 11.36 | | Cup size | 8 [oz] / 236 [ml] | 12 [oz] / 355 [ml] | 16 [oz] / 473 [ml] | 20 [oz] / 591 [ml] |
| | | | | | No. Cups per hour² | 127 | 85 | 63 | 51 |

CBS-1232 Plus Brewer

| ELECTRICAL | | | | | | | | | | |
|---------------------|-------------------------------|-----------------------------------|-------|---------------------------|---------|--------------------|-------------------|--------------------|---|--------------------|
| Brewer SKU | Voltage | Heater Config. | Phase | Wires | kW | Connection | Max Amp Draw | [Gal] / [L] Hour | Certification | |
| E1232US-1B223-PM000 | 208-240 | 2 x 2.3 kW | 1 | 2+G | 3.5-4.6 | Terminal Block | 17.1-19.7 | 12.2 / 46.3 |   | |
| E1232US-1B230-PM000 | 208-240 | 2 x 3.0 kW | 1 | 2+G | 4.5-6.0 | Terminal Block | 22.2-25.5 | 15.8 / 60.0 |   | |
| WATER | | | | | | CUPS PER HOUR | | | | |
| Water Inlet | Water Pressure [psig] / [Bar] | Minimum Flow Rate [gpm] / [L/min] | | Tank Capacity [Gal] / [L] | | Cup size | 8 [oz] / 236 [ml] | 12 [oz] / 355 [ml] | 16 [oz] / 473 [ml] | 20 [oz] / 591 [ml] |
| 3/8" Male Flare | 20-75 / 1.37-5.17 | 1.50 / 5.68 | | 5.48 / 10.07 | | No. Cups per hour² | 254 | 169 | 127 | 101 |

1 This version is made to order and it might require longer production lead time. Please ask your local sales representative for more information.
2 Based on standard factory settings: 5.5 minute brew time; 0% prewet; 93°C water. 3 liters per batch.

TECHNICAL SPECIFICATIONS

INTERNATIONAL

CBS-1231 Plus Brewer

ELECTRICAL

| Brewer SKU | Voltage | Heater Config. | Phase | Wires | kW | Connection | Max Amp Draw | [Gal] / [L] Hour | Certification |
|-------------------------------------|-------------|----------------|-------|--------|---------|----------------|--------------|------------------|---------------|
| E1231IN-1B123-PM000 | 200-240 | 1 x 2.3 kW | 1 | 2+G | 1.6-2.3 | Terminal Block | 8.5-10.1 | 6.1 / 23.2 | NSF cULus |
| E1231IN-1B130-PM000 | 200-240 | 1 x 3.0 kW | 1 | 2+G | 2.1-3.0 | Terminal Block | 10.9-13.0 | 7.9 / 30.0 | NSF cULus |
| E1231NM-1A123-PM002 ¹ | 120 | 1 x 2.3 kW | 1 | 2+G | 2.3 | NEMA 5-20P | 19.7 | 6.1 / 23.2 | NSF NOM |
| E1231NM-1B130-PM003 ¹ | 208-240 | 1 x 3.0 kW | 1 | 2+G | 2.3-3.0 | NEMA 6-15P | 11.3-13.0 | 7.9 / 30.0 | NSF NOM |
| E1231NM-1X123-PM002 DUAL VOLTAGE | 120 | 1 x 2.3 | 1 | 2+G | 2.3 | NEMA 5-20P | 19.7 | 6.1 / 23.2 | NSF NOM |
| | 120/208-240 | 2 x 2.3 kW | 1 | 3+G | 4.6 | Terminal Block | 17.1-19.7 | 7.9 / 30.0 | |
| E1231CE-1B123-PM005 ¹ | 230 | 1 x 2.3 kW | 1 | L/N/PE | 2.1 | CEE 7/7 Shuko | 9.6 | 5.6 / 21.1 | NSF CE |
| E1231CE-1B130-PM005 | 230 | 1 x 3.0 kW | 1 | L/N/PE | 2.8 | CEE 7/7 Shuko | 12.5 | 7.4 / 28.2 | NSF CE |

WATER

| Water Inlet | Water Pressure [psig] / [Bar] | Minimum Flow Rate [gpm] / [L/min] | Tank Capacity [Gal] / [L] |
|-----------------|----------------------------------|--------------------------------------|------------------------------|
| 3/8" Male Flare | 20-75 / 1.37-5.17 | 1.50 / 5.68 | 3.00 / 11.36 |

CUPS PER HOUR

| Cup size | 8 [oz] / 236 [ml] | 12 [oz] / 355 [ml] | 16 [oz] / 473 [ml] | 20 [oz] / 591 [ml] |
|--------------------------------|----------------------|-----------------------|-----------------------|-----------------------|
| No. Cups per hour ² | 127 | 85 | 63 | 51 |

CBS-1232 Plus Brewer

ELECTRICAL

| Brewer SKU | Voltage | Heater Config. | Phase | Wires | kW | Connection | Max Amp Draw | [Gal] / [L] Hour | Certification |
|----------------------------------|---------|----------------|-------|---------|---------|----------------|--------------|------------------|---------------|
| E1232IN-1B223-PM000 | 200-240 | 2 x 2.3 kW | 1 | 2+G | 3.2-4.6 | Terminal Block | 16.5-19.7 | 12.2 / 46.3 | NSF cULus |
| E1232IN-1B230-PM000 | 200-240 | 2 x 3.0 kW | 1 | 2+G | 4.2-6.0 | Terminal Block | 21.3-25.5 | 15.8 / 60.0 | NSF cULus |
| E1232NM-1B230-PM000 | 208-240 | 2 x 3.0 kW | 1 | 2+G | 4.5-6.0 | Terminal Block | 22.2-25.5 | 15.8 / 60.0 | NSF NOM |
| E1232CE-2B223-PM000 ¹ | 230/400 | 2 x 2.3 kW | 2 | 2L/N/PE | 4.2 | Terminal Block | 9.7 | 11.2 / 42.3 | NSF CE |
| E1232CE-2B230-PM000 | 230/400 | 2 x 3.0 kW | 2 | 2L/N/PE | 5.5 | Terminal Block | 12.5 | 14.6 / 55.4 | NSF CE |
| E1232CE-1B223-PM000 ¹ | 230 | 2 x 2.3 kW | 1 | L/N/PE | 4.2 | Terminal Block | 18.9 | 11.2 / 42.3 | NSF CE |
| E1232CE-1B230-PM000 ¹ | 230 | 2 x 3.0 kW | 1 | L/N/PE | 5.5 | Terminal Block | 24.5 | 14.6 / 55.4 | NSF CE |

WATER

| Water Inlet | Water Pressure [psig] / [Bar] | Minimum Flow Rate [gpm] / [L/min] | Tank Capacity [Gal] / [L] |
|-----------------|----------------------------------|--------------------------------------|------------------------------|
| 3/8" Male Flare | 20-75 / 1.37-5.17 | 1.50 / 5.68 | 5.48 / 20.74 |

CUPS PER HOUR

| Cup size | 8 [oz] / 236 [ml] | 12 [oz] / 355 [ml] | 16 [oz] / 473 [ml] | 20 [oz] / 591 [ml] |
|--------------------------------|----------------------|-----------------------|-----------------------|-----------------------|
| No. Cups per hour ² | 254 | 169 | 127 | 101 |

1 This version is made to order and it might require longer production lead time. Please ask your local sales representative for more information.

2 Based on standard factory settings: 5.5 minute brew time; 0% prewet; 93°C water. 3 liters per batch.

DIMENSIONS

CBS-1231 Plus Brewer

| DIMENSIONS | | | | | | |
|--|--------------------|--------------------|-------------------|--------------------|----------------------|---------------------------|
| | Height (A) | Width (B) | Depth (D) | Depth (E) | Faucet Clearance (F) | Brew Basket Clearance (G) |
| Product Dimensions with 1" Standard Legs | 26.25" 66.67 cm | 11.75" 29.84 cm | 20.5" 52.07 cm | 15.13" 38.43 cm | 10.63" 26.98 cm | 13.13" 33.35 cm |
| Product Dimensions with 2.5" Optional Legs | 27.75" 70.48 cm | 11.75" 29.84 cm | 20.5" 52.07 cm | 15.13" 38.43 cm | 12.13" 30.80 cm | 14.63" 37.16 cm |
| Shipping Dimensions | 30.0" 76.20 cm | 17.0" 43.18 cm | 22.0" 55.88 cm | N/A | N/A | N/A |

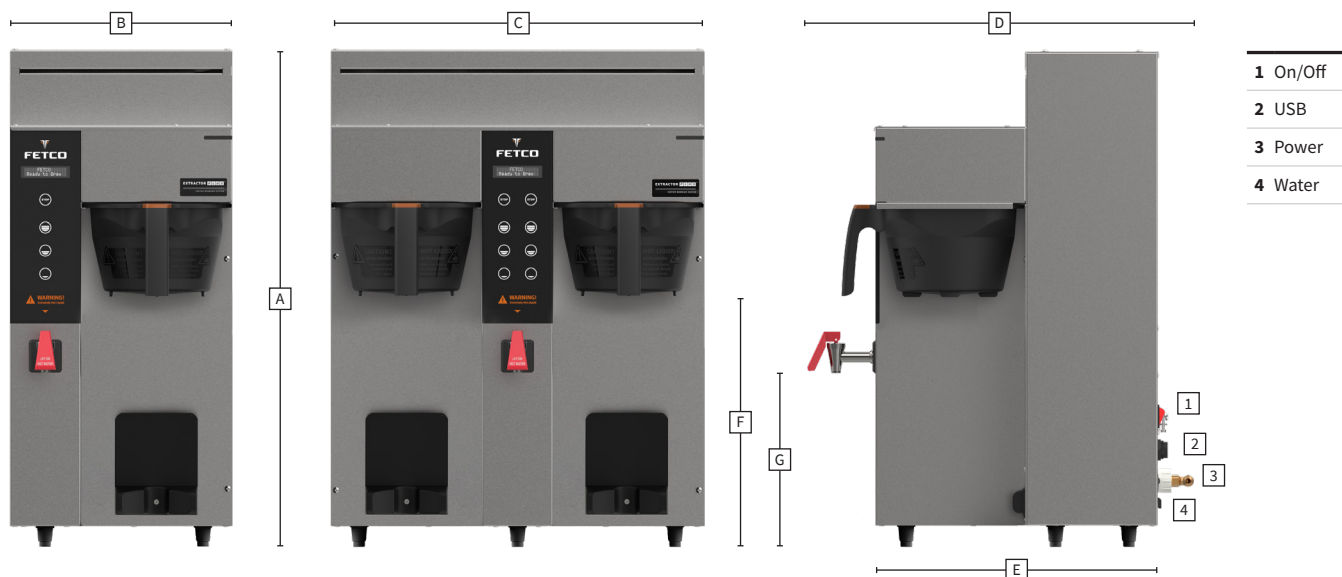
| WEIGHT | | |
|------------------------|-----------------------|------------------------|
| | Empty [lbs] / [kg] | Filled [lbs] / [kg] |
| Product Weight | 29 lbs 13.1 kg | 55 lbs 24.9 kg |
| Shipping Weight | 41 lbs 18.6 kg | N/A |

CBS-1232 Plus Brewer

| DIMENSIONS | | | | | | |
|--|--------------------|--------------------|-------------------|--------------------|----------------------|---------------------------|
| | Height (A) | Width (C) | Depth (D) | Depth (E) | Faucet Clearance (F) | Brew Basket Clearance (G) |
| Product Dimensions with 1" Standard Legs | 26.25" 66.67 cm | 19.75" 50.16 cm | 20.5" 52.07 cm | 15.13" 38.43 cm | 10.63" 26.98 cm | 13.13" 33.35 cm |
| Product Dimensions with 2.5" Optional Legs | 27.75" 70.48 cm | 19.75" 50.16 cm | 20.5" 52.07 cm | 15.13" 38.43 cm | 12.13" 30.80 cm | 14.63" 37.16 cm |
| Shipping Dimensions | 30.0" 76.20 cm | 23.0" 58.42 cm | 25.0" 63.50 cm | N/A | N/A | N/A |

| WEIGHT | | |
|------------------------|-----------------------|------------------------|
| | Empty [lbs] / [kg] | Filled [lbs] / [kg] |
| Product Weight | 47 lbs 21.3 kg | 92 lbs 41.7 kg |
| Shipping Weight | 55 lbs 24.9 kg | N/A |

Shown with 1" standard legs.



FAX
+1.847.719.3001