

COFFEE BREWING SYSTEMS

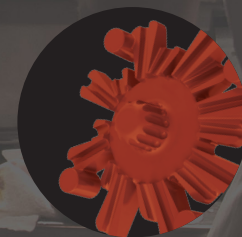
CBS-1240 Plus Brewers 1.0 GALLON BREWING SYSTEM

Shown with D448 4.0L / 1G LUXUS® Thermal Dispenser



PLUG AND PLAY OPERATION

Batch buttons are pre-programmed at the factory. If desired the USB port can be used to upload and download recipes.



CASCADING SPRAY DOME

Patented design provides even saturation of the coffee bed for maximum extraction. Lime resistant design makes for less service calls.

DISPENSERS

CBS-1240 Plus Brewers

DISPENSERS

D451

4.0 Liter / 1 Gallon
LUXUS® Thermal
Server
L4S-10



D482

4.0 Liter / 1 Gallon
LUXUS® Sight
Gauge Server
LGS-10



D448

4.0 Liter / 1 Gallon
LUXUS® Thermal
Dispenser
L4D-10



D479

4.0 Liter / 1 Gallon
LUXUS® Sight
Gauge Dispenser
LGD-10



SERVING STATION FOR THERMAL SERVERS

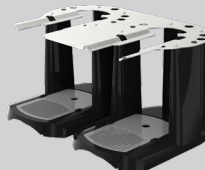
A147

Single Serving
Station for
L4S-10 & LGS-10
S4S-10-1



A148

Twin Serving
Station for
L4S-10 & LGS-10
S4S-10-2



A149

Triple Serving
Station for
L4S-10 & LGS-10
S4S-10-3



All dispensers and serving stations **SOLD SEPARATELY**.



BREW BASKET DESIGN

Advanced brew basket design provides a deeper bed depth and superior thermal insulation for better extraction.



CONTEMPORARY DESIGN

Traditional FETCO core with modern design enhancements fits well in any front-of-house or back of the house application.



ECO MODE

Reduces tank temperature during periods of non-operation to cut down on electricity usage.

ACCESSORIES

CBS-1240 Plus Brewers

BREW BASKETS AND PAPER FILTERS

| Brewer SKU | Brew Basket | Coffee Capacity | Filter Size | Filter SKU | Filter/Case |
|--------------------|------------------------------------|------------------|-------------|------------|-------------|
| All configurations | Standard Plastic / Stainless Steel | Up to 8oz / 227g | 13" x 5" | F002 | 500/cs |

B003218B1

13" x 5"
Stainless Steel
Brew Basket



B014218BN2BK

13" x 5"
Plastic Brew
Basket



F002

13" x 5"
Paper Filters



Contact Customer Service or your Sales Person for more options.

COLORED BREW BASKET HANDLE INSERTS

1023.00180.00

Blue Insert



1023.00190.00

Red Insert



1023.00191.00

Green Insert



1023.00192.00

Orange Insert



WATER FILTRATION SYSTEM

| Filtration System | SKU | Part | Rated Capacity | Working Pressure | Weight |
|-------------------|------|-----------------------|----------------|-------------------------------------|-------------------|
| Everpure® | A039 | In-Line System | 113,563 liters | 10-125 psi [0.7-8.6 bar], non-shock | 6.0 lbs / 2.7 kg |
| Everpure® | A075 | Replacement Cartridge | 113,563 liters | 10-125 psi [0.7-8.6 bar], non-shock | 6.0 lbs / 2.7 kg |
| BWT Bestmax | A138 | In-Line System | 3,002 liters | 29-116 psi [2-8 bar], non-shock | 11.0 lbs / 5.0 kg |
| BWT Bestmax | A139 | Replacement Cartridge | 3,002 liters | 29-116 psi [2-8 bar], non-shock | 11.0 lbs / 5.0 kg |
| BWT Bestmax | A140 | In-Line System | 4,562 liters | 29-116 psi [2-8 bar], non-shock | 11.0 lbs / 5.0 kg |
| BWT Bestmax | A141 | Replacement Cartridge | 4,562 liters | 29-116 psi [2-8 bar], non-shock | 11.0 lbs / 5.0 kg |

EVERPURE®

In-Line Water
Filtration System



SET INCLUDES: 1ea. commercial quality corrosion resistant filter head 1ea. taste and odor filter cartridge (FETCO® #A075) / 1ea. 3/8" x 4' connection hose / 1 set — mounting bracket and hardware.

- Recommended for large-sized operations
- Taste and odor filter for extremely turbid (cloudy) water
- Granular-activated carbon reduces sediment and chlorine
- Quick-disconnect style head/cartridge design cartridge for effortless replacement
- Durable, corrosion-resistant head includes built-in shutoff valve

BWT BESTMAX

In-Line Water
Filtration System



SET INCLUDES: 1ea. filter cartridge / 1ea. universal filter head / 1ea. wall mounting bracket Braided hose supplies 3/8" and 3/4" compression, in 24" or 48" lengths

- Recommended for small- to medium-sized operations
- Carbonate hardness removal prevents scale deposits and retains minerals
- Granular-activated carbon reduces sediment and chlorine
- Quick-disconnect style head/cartridge design cartridge for effortless replacement
- Durable, corrosion-resistant head includes built-in shutoff valve
- Four bypass settings allows for different water qualities and product preferences



TECHNICAL SPECIFICATIONS

NORTH AMERICA

CBS-1241 Plus Brewer

| ELECTRICAL | | | | | | | | | |
|-------------------------------------|-------------|----------------|-------|-------|-----|----------------|--------------|------------------|---------------|
| Brewer SKU | Voltage | Heater Config. | Phase | Wires | kW | Connection | Max Amp Draw | [Gal] / [L] Hour | Certification |
| E1241US-1A115-PM001 | 120 | 1 x 1.5 kW | 1 | 2+G | 1.5 | NEMA 5-15P | 13.0 | 4.0 / 15.1 | NSF cULus |
| E1241US-1A123-PM002 | 120 | 1 x 2.3 kW | 1 | 2+G | 2.3 | NEMA 5-20P | 19.7 | 6.1 / 23.2 | NSF cULus |
| E1241US-1X117-PM001 DUAL VOLTAGE | 120 | 1 x 1.7 kW | 1 | 2+G | 1.7 | NEMA 5-15P | 14.7 | 4.5 / 17.1 | NSF cULus |
| | 120/208-240 | 2 x 1.7 kW | 1 | 3+G | 3.4 | Terminal Block | 12.8-14.7 | 9.0 / 34.2 | |

| WATER | | | | |
|-----------------|-------------------------------|-----------------------------------|---------------------------|--|
| Water Inlet | Water Pressure [psig] / [Bar] | Minimum Flow Rate [gpm] / [L/min] | Tank Capacity [Gal] / [L] | |
| 3/8" Male Flare | 20-75 / 1.37-5.17 | 1.50 / 5.68 | 4.10 / 15.50 | |

| CUPS PER HOUR | | | | |
|--------------------------------|-------------------|--------------------|--------------------|--------------------|
| Cup size | 8 [oz] / 236 [ml] | 12 [oz] / 355 [ml] | 16 [oz] / 473 [ml] | 20 [oz] / 591 [ml] |
| No. Cups per hour ² | 145 | 96 | 72 | 58 |

CBS-1242 Plus Brewer

| ELECTRICAL | | | | | | | | | |
|---------------------|---------|----------------|-------|-------|---------|----------------|--------------|------------------|---------------|
| Brewer SKU | Voltage | Heater Config. | Phase | Wires | kW | Connection | Max Amp Draw | [Gal] / [L] Hour | Certification |
| E1242US-1B223-PM000 | 208-240 | 2 x 2.3 kW | 1 | 2+G | 3.5-4.6 | Terminal Block | 17.1-19.7 | 12.2 / 46.3 | NSF cULus |
| E1242US-1B230-PM000 | 208-240 | 2 x 3.0 kW | 1 | 2+G | 4.5-6.0 | Terminal Block | 22.2-25.5 | 15.9 / 60.4 | NSF cULus |

| WATER | | | | |
|-----------------|-------------------------------|-----------------------------------|---------------------------|--|
| Water Inlet | Water Pressure [psig] / [Bar] | Minimum Flow Rate [gpm] / [L/min] | Tank Capacity [Gal] / [L] | |
| 3/8" Male Flare | 20-75 / 1.37-5.17 | 1.50 / 5.68 | 7.48 / 28.31 | |

| CUPS PER HOUR | | | | |
|--------------------------------|-------------------|--------------------|--------------------|--------------------|
| Cup size | 8 [oz] / 236 [ml] | 12 [oz] / 355 [ml] | 16 [oz] / 473 [ml] | 20 [oz] / 591 [ml] |
| No. Cups per hour ² | 255 | 170 | 128 | 102 |

1 This version is made to order and it might require longer production lead time. Please ask your local sales representative for more information.
2 Based on standard factory settings: 5.5 minute brew time; 0% prewet; 93°C water. 3 liters per batch.

TECHNICAL SPECIFICATIONS

INTERNATIONAL

CBS-1241 Plus Brewer

ELECTRICAL

| Brewer SKU | Voltage | Heater Config. | Phase | Wires | kW | Connection | Max Amp Draw | [Gal] / [L] Hour | Certification |
|-------------------------------------|-------------|----------------|-------|--------|---------|----------------|--------------|------------------|---------------|
| E1241IN-1B130-PM000 | 200-240 | 1 x 3.0 kW | 1 | 2+G | 2.1-3.0 | Terminal Block | 10.9-13.0 | 8.0 / 30.2 | NSF cULus |
| E1241IN-1B140-PM000 ¹ | 200-240 | 1 x 4.0 kW | 1 | 2+G | 2.8-4.0 | Terminal Block | 14.4-17.2 | 10.0 / 37.9 | NSF cULus |
| E1241IN-1B123-PM000 ¹ | 200-240 | 1 x 2.3 kW | 1 | 2+G | 1.6-2.3 | Terminal Block | 8.5-10.1 | 6.1 / 23.2 | NSF cULus |
| E1241NM-1B140-PM000 ¹ | 208-240 | 1 x 4.0 kW | 1 | 2+G | 3.0-4.0 | Terminal Block | 14.9-17.2 | 10.0 / 37.9 | NSF NOM |
| E1241NM-1X123-PM002 DUAL VOLTAGE | 120 | 1 x 2.3 kW | 1 | 2+G | 2.3 | NEMA 5-20P | 19.7 | 6.1 / 23.2 | NSF NOM |
| | 120/208-240 | 2 x 2.3 kW | 1 | 3+G | 4.6 | Terminal Block | 17.1-19.7 | 10.0 / 37.9 | |
| E1241CE-1B130-PM000 | 230 | 1 x 3.0 kW | 1 | L/N/PE | 2.8 | Terminal Block | 12.5 | 7.4 / 28.2 | NSF CE |

WATER

| Water Inlet | Water Pressure [psig] / [Bar] | Minimum Flow Rate [gpm] / [L/min] | Tank Capacity [Gal] / [L] |
|-----------------|----------------------------------|--------------------------------------|------------------------------|
| 3/8" Male Flare | 20-75 / 1.37-5.17 | 1.50 / 5.68 | 4.10 / 15.50 |

CUPS PER HOUR

| Cup size | 8 [oz] / 236 [ml] | 12 [oz] / 355 [ml] | 16 [oz] / 473 [ml] | 20 [oz] / 591 [ml] |
|--------------------------------|----------------------|-----------------------|-----------------------|-----------------------|
| No. Cups per hour ² | 160 | 107 | 80 | 64 |

CBS-1242 Plus Brewer

ELECTRICAL

| Brewer SKU | Voltage | Heater Config. | Phase | Wires | kW | Connection | Max Amp Draw | [Gal] / [L] Hour | Certification |
|---------------------|---------|----------------|-------|---------|---------|----------------|--------------|------------------|---------------|
| E1242IN-1B223-PM000 | 200-240 | 2 x 2.3 kW | 1 | 2+G | 3.2-4.6 | Terminal Block | 16.5-19.7 | 12.2 / 46.3 | NSF cULus |
| E1242IN-1B230-PM000 | 200-240 | 2 x 3.0 kW | 1 | 2+G | 4.2-6.0 | Terminal Block | 21.3-25.5 | 15.9 / 60.4 | NSF cULus |
| E1242NM-1B230-PM000 | 208-240 | 2 x 3.0 kW | 1 | 2+G | 4.5-6.0 | Terminal Block | 22.2-25.5 | 15.9 / 60.4 | NSF NOM |
| E1242CE-2B230-PM000 | 230/400 | 2 x 3.0 kW | 2 | 2L/N/PE | 5.5 | Terminal Block | 12.5 | 14.9 / 56.4 | NSF CE |
| E1242CE-1B230-PM000 | 230 | 2 x 3.0 kW | 1 | L/N/PE | 5.5 | Terminal Block | 24.5 | 14.9 / 56.4 | NSF CE |

WATER

| Water Inlet | Water Pressure [psig] / [Bar] | Minimum Flow Rate [gpm] / [L/min] | Tank Capacity [Gal] / [L] |
|-----------------|----------------------------------|--------------------------------------|------------------------------|
| 3/8" Male Flare | 20-75 / 1.37-5.17 | 1.50 / 5.68 | 7.48 / 28.31 |

CUPS PER HOUR

| Cup size | 8 [oz] / 236 [ml] | 12 [oz] / 355 [ml] | 16 [oz] / 473 [ml] | 20 [oz] / 591 [ml] |
|--------------------------------|----------------------|-----------------------|-----------------------|-----------------------|
| No. Cups per hour ² | 255 | 170 | 128 | 102 |

1 This version is made to order and it might require longer production lead time. Please ask your local sales representative for more information.

2 Based on standard factory settings: 5.5 minute brew time; 0% prewet; 93°C water. 3 liters per batch.

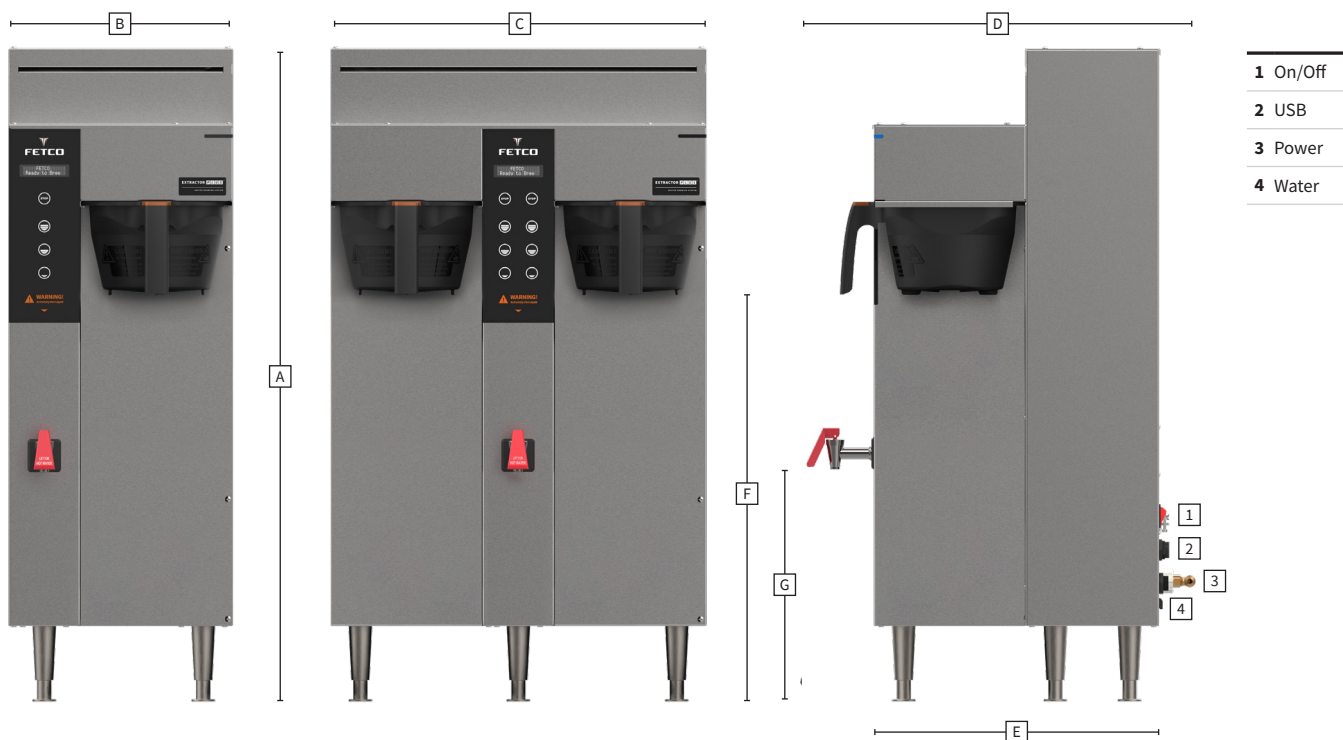
DIMENSIONS

CBS-1241 Plus Brewer

| DIMENSIONS | | | | | | | WEIGHT | | |
|----------------------------|-------------------|--------------------|-------------------|--------------------|---------------------------|----------------------|------------------------|--------------------|---------------------|
| | Height (A) | Width (B) | Depth (D) | Depth (E) | Brew Basket Clearance (F) | Faucet Clearance (G) | | Empty [lbs] / [kg] | Filled [lbs] / [kg] |
| Product Dimensions | 34.5" 87.63 cm | 11.75" 29.84 cm | 20.5" 52.07 cm | 15.13" 38.43 cm | 21.38" 54.30 cm | 12.13" 30.80 cm | Product Weight | 38 lbs 17.2 kg | 64 lbs 29.0 kg |
| Shipping Dimensions | 35.0" 88.90 cm | 17.0" 43.18 cm | 22.0" 55.88 cm | N/A | N/A | N/A | Shipping Weight | 50 lbs 22.7 kg | N/A |

CBS-1242 Plus Brewer

| DIMENSIONS | | | | | | | WEIGHT | | |
|----------------------------|-------------------|--------------------|-------------------|--------------------|---------------------------|----------------------|------------------------|--------------------|---------------------|
| | Height (A) | Width (C) | Depth (D) | Depth (E) | Brew Basket Clearance (F) | Faucet Clearance (G) | | Empty [lbs] / [kg] | Filled [lbs] / [kg] |
| Product Dimensions | 34.5" 87.63 cm | 19.75" 50.16 cm | 20.5" 52.07 cm | 15.13" 38.43 cm | 21.38" 54.30 cm | 12.13" 30.80 cm | Product Weight | 56 lbs 25.4 kg | 101 lbs 45.8 kg |
| Shipping Dimensions | 35.0" 88.90 cm | 22.0" 55.88 cm | 24.0" 60.96 cm | N/A | N/A | N/A | Shipping Weight | 66 lbs 29.9 kg | N/A |



FAX
+1.847.719.3001