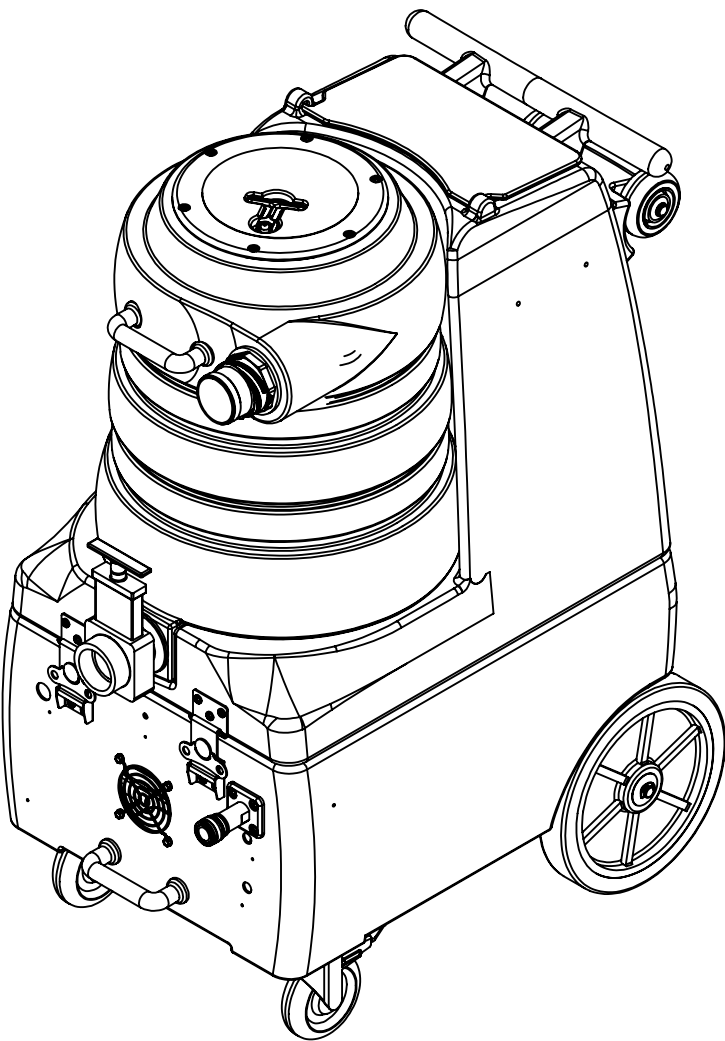


8				7				6				5				4				3				2				1							
ITEM NO.		PART NO.		DESCRIPTION								QTY.		ITEM NO.		PART NO.		DESCRIPTION								QTY.		REVISIONS							
1		H230		screw, 10-32 x 1/2" phil pan head, s/s								36		63		A926		elbow, inlet assembly 2"								1		REV.		DESCRIPTION		DATE		APPROVED	
2		H487		bracket, hinge								2		64		G091		gasket, 7", vac lid								1		OD		ORIGINAL DRAFT				JFL	
3		E360		flanged male inlet recaptacle, 230V, 20A								2		65		G090		lid, vac tank, clear, 7"								1									
4		H256		screw, 10-32 x 3/4" phil pan head								6		66		H304		screw, #8 x 5/8 phil oval, s/s								6									
5		H273		nut, kep, #10-32 zinc								24		67		G003		filter, foam, 2", vac stack, 1/2"								1									
6		H296		guard, cooling fan, wire								2		68		G097		filter, screen mesh, 1.90" dia								1									
7		H343		screw, #10 x 5/8" hex head zinc								8		69		P502		adapter, 1.5" pvc, fslip x fslip								1									
8		H371		axle, 18.03" x .50" dia								1		70		PH633-13		pipe, pvc, 1-1/2"								1									
9		H254		washer, axle, cut 1/2" id								4		71		P520		adapter, 1.5" mpt pvc								1									
10		H392		wheel, 10"								2		72		G002		gasket, cam fitting polyethylene, 2.35" OD 1.90" ID								1									
11		H042		c-clip, 12mm, external								2		73		H212		flat washer, 9/16"ID x 1 1/16"OD, AN960-C916								2									
12		H668		caster, 4", black hub & gray tread								2		74		B156		nut, 1/4" npt								1									
13		H342		bolt, 1/4-20 x 1" hex head, s/s								8		75		B103		elbow, 90 deg street, 1/4"mpt x 1/4" fpt								2									
14		H210		washer, 1/4" flat, s/s								8		76		E373		level switch, vacuum shut-off, rear threads								2									
15		H216		nut, lock, 1/4-20, nylon insert, s/s								8		77		B113		tee, 1/4" fpt x 1/4" fpt x 1/4" fpt								1									
16		B107		nipple, hex, 1/4"mpt x 1/4"mpt								2		78		P698		vac tank, breeze								1									
17		H484		plate, mounting, QD								1		79		H300		cuff, hose, 1-1/2 x 1-1/2, wire								1									
18		B102		quick disconnect, 1/4" fqd x 1/4" fpt								1																							
19		H485		handle, aluminum grip, black								2																							
20		H211		washer, 1/4" id x 1" od, flat, s/s								6																							
21		H202		bolt, 1/4-20 x 3/4" hex head, s/s								4																							
22		H486		latch, front, set, large								2																							
23		H289		washer, 10 flat, s/s								1																							
24		H389		screw, 10-32 x 1/2" SHCS, alloy								1																							
25		E515		switch, rocker, 2 position								3																							
26		H422		plug, dome 3/8", black								2																							
27		H434		plug, vent, heyco, 1/2"								1																							
28		H641-DIY		plate, switch								1																							
29		G068		bumper, 7/8" x 1/4" head								2																							
30		E632		relay, shut-off switch, mechanical float, 115v								2																							
31		G165		cover, relay								2																							
32		P696		base, breeze								1																							
33		B172		elbow, brass, 90 deg, 1/2" barb x 3/8"mpt								1																							
34		H210		washer, 1/4" flat, s/s								4																							
35		H222		screw, 10-32 x 1-1/4" phil pan head, s/s								4																							
36		AH157		sol hose, pulse, 3/8" x 9", 1/4" fsw x 1/4" fpt								1																							
37		B652		elbow, 90 deg, 3/8"mpt x 1/4"mpt								1																							
38		C322		pump, 200psi, piston115V								1																							
39		PH628-14		vac hose, 2", black, wire reinforced								1																							
40		H217		clamp, hose, 2-1/4 dia								4																							
41		C347		vac motor, lx, hybrid, 173 cfm, 120v								1																							
42		H503		vac support, 3 stage, 3.25", no thrds								6																							
43		C348		vac motor, lx, hybrid, w/inlet tube, 173 cfm, 120v								1																							
44		PH628-28		vac hose, 2", black, wire reinforced								1																							
45		B160		adapter, brass, 1/2" barb x 3/8" fsw, ball end								1																							
46		PH615		sol hose, 1/2" kuri 100psi								1																							
47		H347		clamp, hose, 5/16-29/32								2																							
48		B186		elbow, 90 deg street, 3/8"mpt x 3/8" fmpt								1																							
49		H299		washer, 11/16" id x 1-1/2" od x .075, s/s								3																							
50		B216		nipple, brass, 3/8" x close								1																							
51		B210		bushing, brass, 1/2"mpt x 3/8" fpt, hex								1																							
52		B119A		filter, strainer, 1/2" fpt								1																							
53		H768		bolt, 1/4-20 x 3/4" serrated hex flange, zinc								4																							
54		H390A		bracket, "L", 2" x 2"								2																							
55		P697		sol tank, breeze								1																							
56		G062		lid, sol tank								1																							
57		H215		nut, hex, 1/4-20 s/s								1																							
58		G052		washer, buna 1-1/8" od x 3/16" id								4																							
59		H203		bolt, 1/4-20 x 1-1/4"								1																							
60		A145		Handle, Wheel Kit, LTD								1																							
61		H225		valve, drain, 1-1/2"								1																							
62		H135		Cuff-Lynx, 2" m cuff x 2" mpt								1																							
8				7				6				5				4				3				2				1							

F

E

D

C

B

A

F

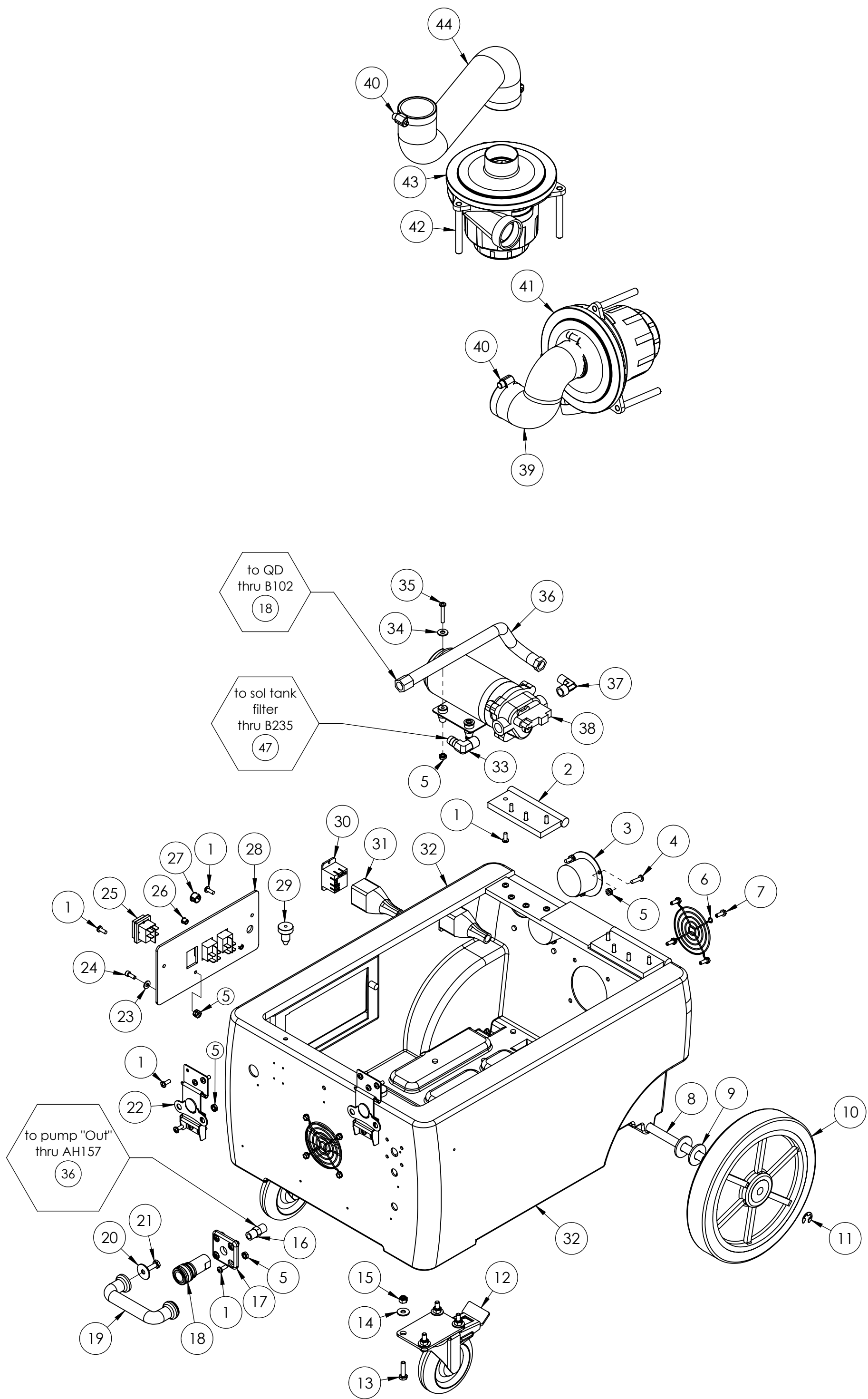
E

D

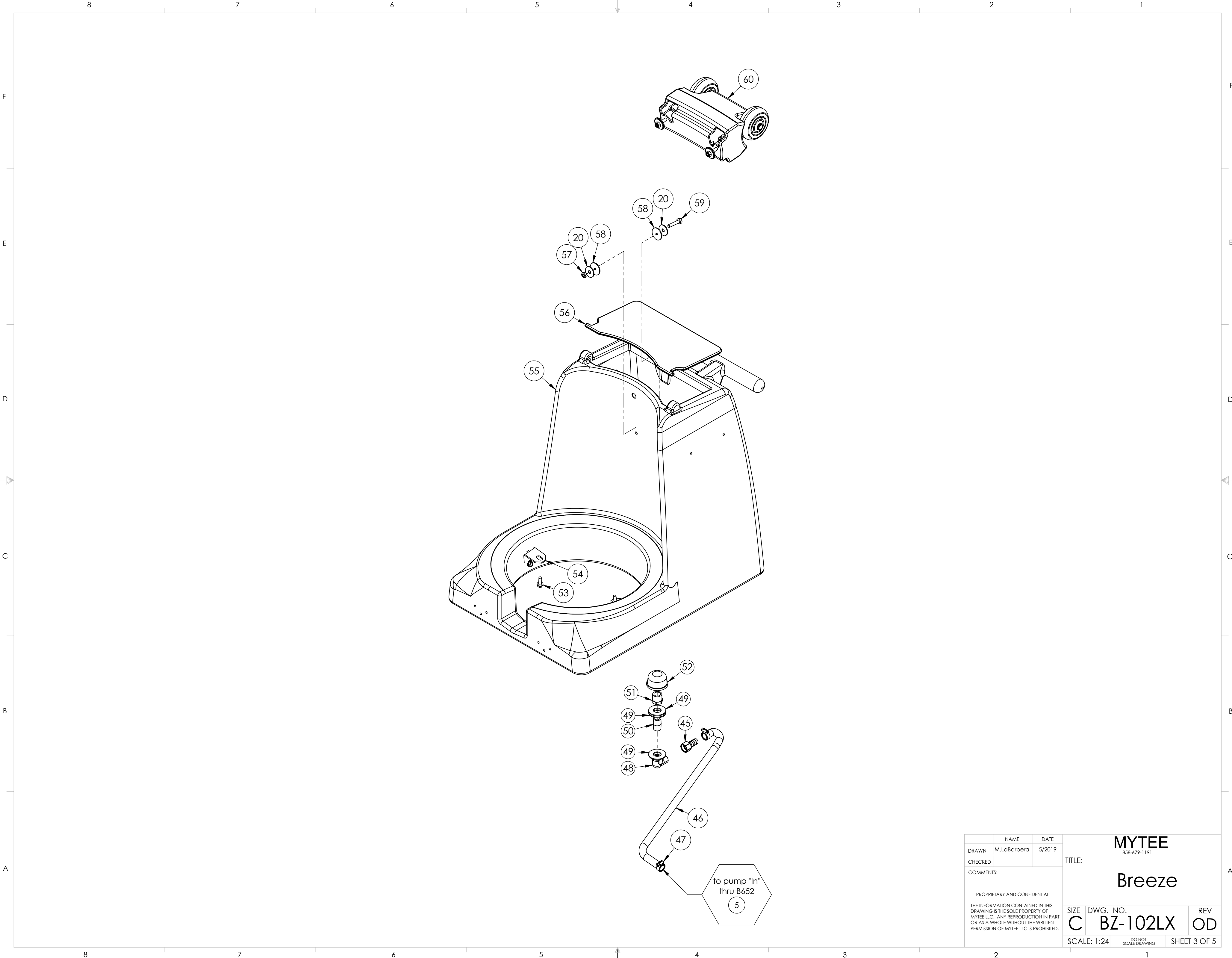
C

B

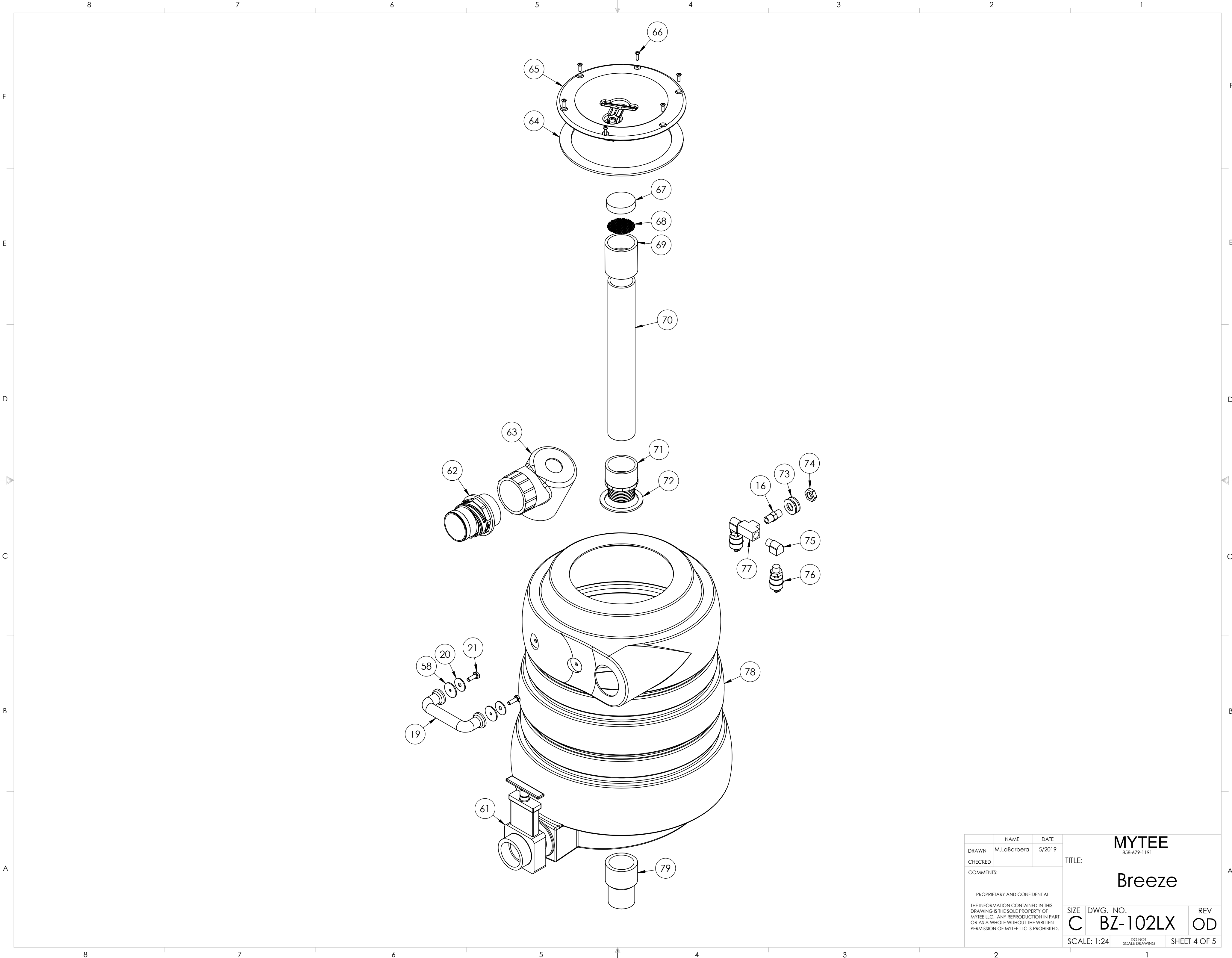
A



	NAME	DATE	MYTEE		
DRAWN	M.LaBarbera	5/2019	858-679-1191		
CHECKED			TITLE:		
COMMENTS:			Breeze		
PROPRIETARY AND CONFIDENTIAL			SIZE	DWG. NO.	REV
THE INFORMATION CONTAINED IN THIS DRAWING IS THE SOLE PROPERTY OF MYTEE LLC. ANY REPRODUCTION IN PART OR AS A WHOLE WITHOUT THE WRITTEN PERMISSION OF MYTEE LLC IS PROHIBITED.			C	BZ-102LX	OD
			SCALE: 1:24	DO NOT SCALE DRAWING	SHEET 2 OF 5



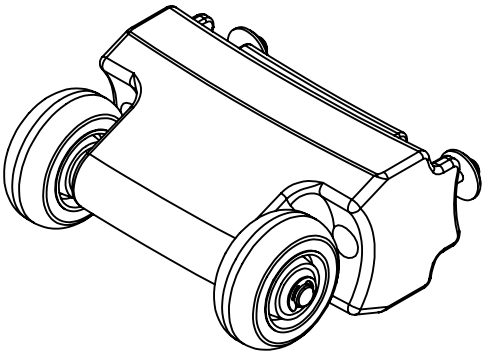
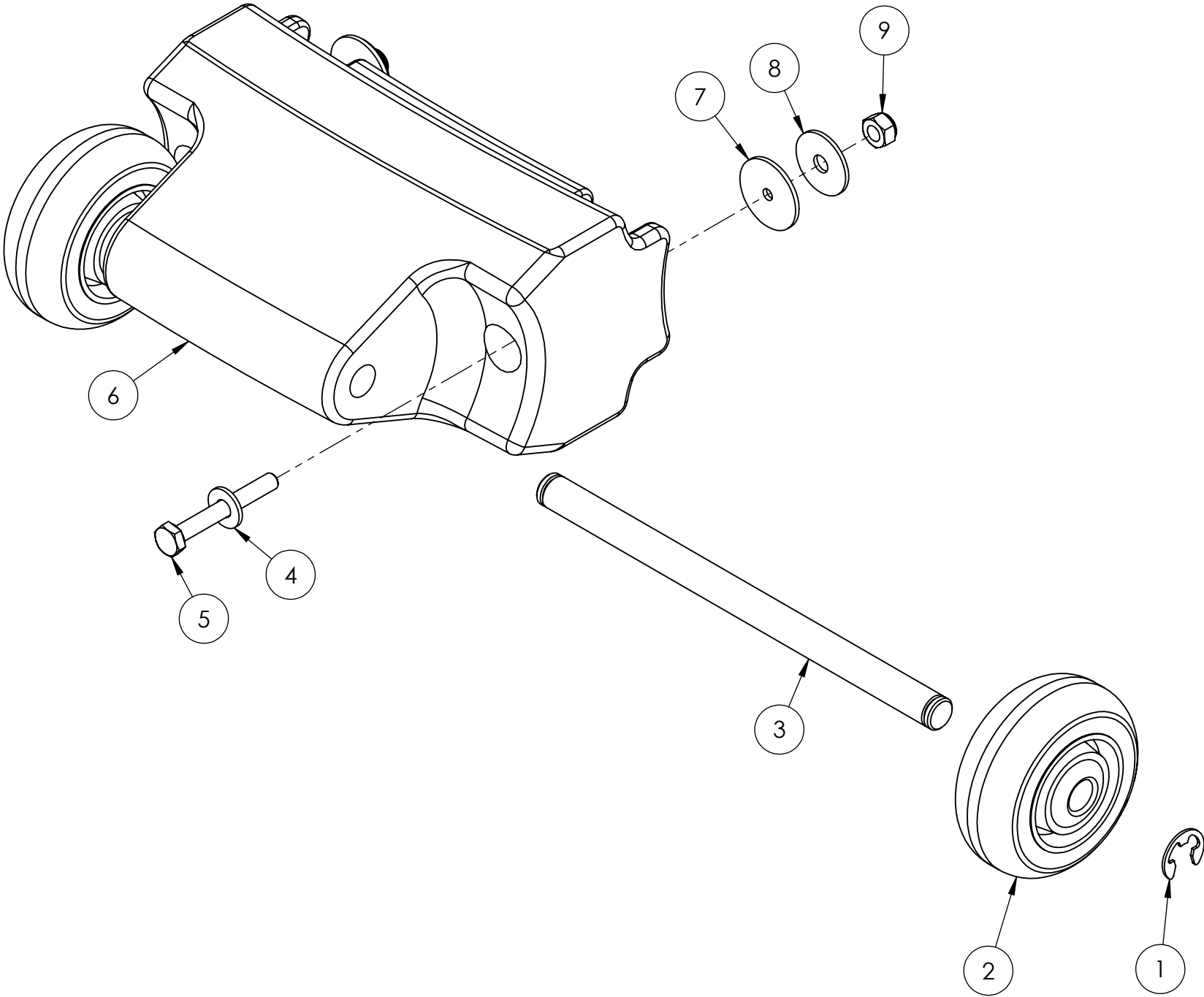
	NAME	DATE	MYTEE		
DRAWN	M.LaBarbera	5/2019	858-679-1191		
CHECKED			TITLE:		
COMMENTS:			Breeze		
PROPRIETARY AND CONFIDENTIAL THE INFORMATION CONTAINED IN THIS DRAWING IS THE SOLE PROPERTY OF MYTEE LLC. ANY REPRODUCTION IN PART OR AS A WHOLE WITHOUT THE WRITTEN PERMISSION OF MYTEE LLC IS PROHIBITED.			SIZE C	DWG. NO. BZ-102LX	REV OD
SCALE: 1:24			DO NOT SCALE DRAWING		SHEET 3 OF 5



	NAME	DATE	MYTEE		
DRAWN	M.LaBarbera	5/2019	858-679-1191		
CHECKED			TITLE:		
COMMENTS:			Breeze		
PROPRIETARY AND CONFIDENTIAL THE INFORMATION CONTAINED IN THIS DRAWING IS THE SOLE PROPERTY OF MYTEE LLC. ANY REPRODUCTION IN PART OR AS A WHOLE WITHOUT THE WRITTEN PERMISSION OF MYTEE LLC IS PROHIBITED.			SIZE C	DWG. NO. BZ-102LX	REV OD
SCALE: 1:24			DO NOT SCALE DRAWING		SHEET 4 OF 5

ITEM NO.	PART NO.	DESCRIPTION	QTY.
1	H042	c-clip, 12mm, external	2
2	H358B	wheel, 3"	2
3	H507	axle, 7.94" x .50" dia	1
4	H210	washer, 1/4" flat, s/s	2
5	H169	bolt, 1/4-20 x 2", hex head	2
6	P650	wheel handle, LTD	1
7	G052	washer, buna 1-1/8" od x 3/16" id	2
8	H211	washer, 1/4" id x 1" od, flat, s/s	2
9	H216	nut, lock, 1/4-20, nylon insert, s/s	2

REVISIONS			
REV.	DESCRIPTION	DATE	APPROVED
OD	ORIGINAL DRAFT	3/2019	JFL



	NAME	DATE	MYTEE 858-679-1191	
DRAWN	M.LaBarbera	3/2019		
CHECKED			TITLE: Handle, Wheel Kit, LTD	
COMMENTS: PROPRIETARY AND CONFIDENTIAL THE INFORMATION CONTAINED IN THIS DRAWING IS THE SOLE PROPERTY OF MYTEE LLC. ANY REPRODUCTION IN PART OR AS A WHOLE WITHOUT THE WRITTEN PERMISSION OF MYTEE LLC IS PROHIBITED.			SIZE C	DWG. NO. BZ-102LX
			SCALE: 1:4	REV OD
			DO NOT SCALE DRAWING	SHEET 5 OF 5