

J

Pet-Care Plumbing Products



T&S Brass Pet-Care Plumbing Specialty Products

For Grooming Pets and Cleaning/Sanitizing Cages, Kennels & Stables



T&S Quality Pet-Care Plumbing Products



RINSE UNITS

Wash and Rinse Products



PG-4DREV Lightweight Aluminum Spray Unit

- 4" (102 mm) deck-mount faucet (B-0326-LN)
- 1/2" NPT female eccentric flanged inlets (00AA)
- Vacuum breaker outlet
- 9 ft. coiled hose and aluminum spray valve
- Lightweight spray valve for easy, all-day use
- Wall hook

PG-1DREV Same as PG-4DREV except single hole single temperature deck mount faucet with vacuum breaker

PG-8DREV Same as PG-4DREV except with 8" centers



PG-35AV-CH Coiled Hose and Spray Valve

- Lightweight aluminum handle with rubber grip and hold down clip
- 1/4" NPT male inlet
- Coiled polyurethane hose with maximum stretching length of 9 ft.

PG-35AV-CH01 Same as PG-35AV-CH except with 3/4" female garden hose inlet (PG-0001)

PG-35AV-CH02 Same as PG-35AV-CH except with 3/8" NPT female inlet (PG-0002)

PG-35AV-CH03 Same as PG-35AV-CH except with 1/2" NPT female inlet (PG-0003)

PG-35AV-CH05 Same as PG-35AV-CH except with 3/4" x 14 female inlet (052A)

Replacement Parts

Model #	Description
EB-10K	Repair Kit
013539-45	Replacement Hose
PG-35AV	Aluminum Valve



PG-8WREV Lightweight Aluminum Spray Unit

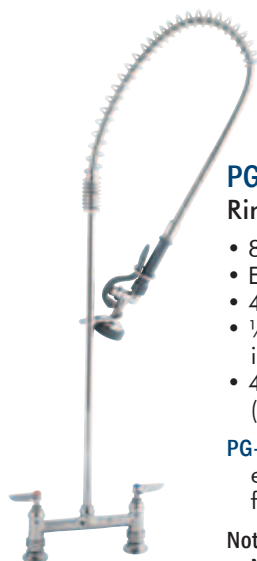
- 8" (203 mm) wall-mount faucet
- 1/2" NPT female eccentric flanged inlets (00AA)
- Vacuum breaker outlet
- 9 ft. coiled hose and aluminum spray valve
- Lightweight spray valve for easy, all-day use
- Wall hook



PG-8WSAV-08 Lightweight Aluminum Spray Unit

- 8" (203 mm) wall-mount faucet
- 1/2" NPT female eccentric flanged inlets (00AA)
- Vacuum breaker
- 9 ft. coiled hose and aluminum spray valve
- Swivel adapter
- Add-on faucet with 8" swing nozzle and stream regulator outlet
- Lightweight spray valve for easy, all-day use
- Wall hook

PG-1WSAV-06 Same as PG-8WSAV-08 except single hole wall-mount faucet with vacuum breaker, 9 ft. coiled hose and 6" swing nozzle



PG-0123 Overhead Wash and Rinse Unit

- 8" (203 mm) deck-mount faucet
- EB-0107 high flow blue spray valve
- 43" high
- 1/2" NPT female eccentric flanged inlets (00AA)
- 44" flexible stainless steel hose (B-0044-H)

PG-0123-B Same as PG-0123 except with wall bracket for support

Note: this model is EPA 2005 Non-Compliant



PG-0133 Overhead Wash and Rinse Unit

- 8" (203 mm) wall-mount faucet
- EB-0107 high flow blue spray valve
- 34 1/2" high
- 1/2" NPT female eccentric flanged inlets (00AA)
- 44" flexible stainless steel hose (B-0044-H)

PG-0133-B Same as PG-0133 except with wall bracket for support

Note: this model is EPA 2005 Non-Compliant



— Our Pedigree is Your Quality Assurance



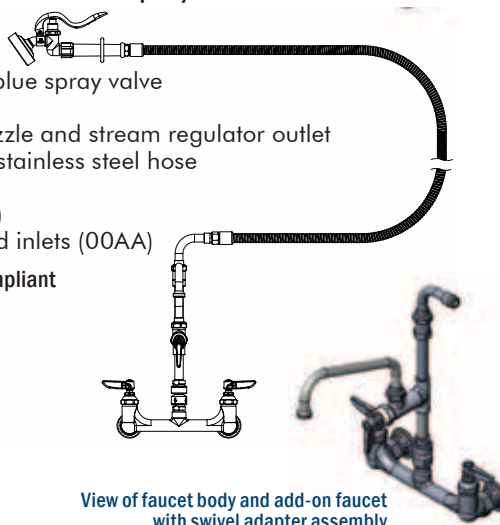
RINSE UNITS

Wash and Rinse Products

P3-8WESV-08M Sink Faucet with Hose Spray

- 8" (203 mm) wall-mount faucet
- EB-0107-035 high flow angled blue spray valve
- Vacuum breaker
- Add-on faucet with 8" swing nozzle and stream regulator outlet
- Swivel adapter with 96" flexible stainless steel hose (EB-0096-H)
- Hanger hook assembly (B-0166)
- 1/2" NPT female eccentric flanged inlets (00AA)

Note: this model is EPAAct 2005 Non-Compliant



View of faucet body and add-on faucet with swivel adapter assembly



PG-2187 Overhead Wash and Rinse Unit

- 8" (203 mm) wall-mount faucet
- 46¹³/₁₆" high
- EB-0107 high flow blue spray valve
- Add-on faucet with 14" swing nozzle and stream regulator outlet
- 1/2" NPT female eccentric flanged inlets
- Wall bracket for support
- 72" (1829 mm) PVC hose

Note: this model is EPAAct 2005 Non-Compliant



B-1171 Sink Faucet with Side Spray

- 4" (102 mm) deck-mount faucet
- Side spray with 4 ft. reinforced vinyl hose and hose guide
- 8" (203 mm) swing nozzle
- 1/2" NPT male inlets
- Built-in diverter

B-1171-07 Same as B-1171 except with 7 ft. hose

B-1172 Same as B-1171 except with 8" centers

B-1172-07 Same as B-1172 except with 7 ft. hose

B-2730 Swivel Base Faucet with Side Spray

- 9" spout
- Single lever handle and ceramic cartridge
- Flexible supply hoses
- 4 ft. vinyl hose with hose guide

B-2730-LH Same as B-2730 except with 6" long handle

B-2730-07 Same as B-2730 except with 7 ft. hose

B-2743 Single Lever Faucet with Side Spray (right)

- Single hole deck-mount faucet
- Swivel gooseneck assembly with aerator
- Two 17" flexible supply hoses with 1/2" NPSM compression fittings
- Integral diverter for water flow through side spray or gooseneck



For more than half a century, **T&S Brass** has been setting the standard of excellence in the commercial plumbing business. Today, we manufacture a full line of quality grooming and pet-care plumbing products to make cleaning – and cleaning up after – even your toughest customers easy, safe, thorough and fast.

T&S pet-care products offer a wide range of tools and accessories designed to be versatile and withstand heavy use in kennels, grooming stations, veterinary clinics, boarding facilities and stables. **T&S** quality pet-care products are certified, always in stock and available worldwide. Plus, only T&S can get your order to you next day thanks to our exclusive **T&S Brass 24-Hour Quick Ship** program.

T&S delivers:

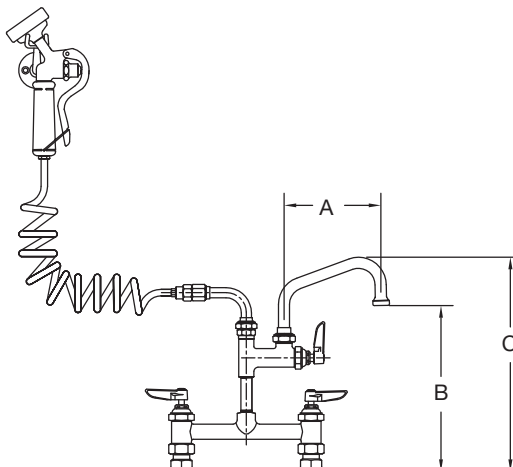
- Heavy-duty, commercial-grade products
- A wide range of features and options including sanitizing and interior/exterior capabilities
- Durable, corrosion-resistant stainless steel construction
- Easy to use, fully adjustable products
- Custom designed systems to meet your individual needs





PG-8DSAN-XX Pet Grooming Station

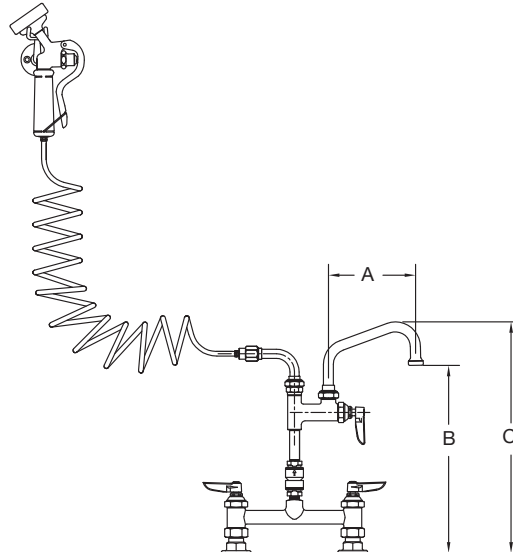
- 8" (203 mm) deck-mount faucet
- ½" NPT female eccentric flanged inlets (00AA)
- 034A swivel adapter
- 9 ft. coiled hose and aluminum spray valve
- Lightweight spray valve for easy, all-day use
- Add-on faucet with swing nozzle and stream regulator outlet



Model No.	"A" Nozzle Spread	"B" Clearance	"C" Height
PG-8DSAN-06	6" (152 mm)	10-1/4" (260 mm)	13-1/4" (336 mm)
PG-8DSAN-08	8" (203 mm)	10-9/16" (268 mm)	13-5/16" (338 mm)
PG-8DSAN-10	10" (254 mm)	11-1/4" (285 mm)	14" (356 mm)
PG-8DSAN-12	12" (305 mm)	11-3/8" (289 mm)	14-1/8" (359 mm)
PG-8DSAN-14	14" (356 mm)	12-5/8" (320 mm)	15-3/8" (391 mm)
PG-8DSAN-16	16" (406 mm)	13-7/16" (341 mm)	16-3/16" (411 mm)
PG-8DSAN-18	18" (457 mm)	14" (356 mm)	16-3/4" (426 mm)

PG-8DSAV-XX Pet Grooming Station

- 8" (203 mm) deck-mount faucet
- ½" NPT female eccentric flanged inlets (00AA)
- 034A swivel adapter
- Vacuum breaker
- 9 ft. coiled hose and aluminum spray valve
- Lightweight spray valve for easy, all-day use
- Add-on faucet with swing nozzle and stream regulator outlet

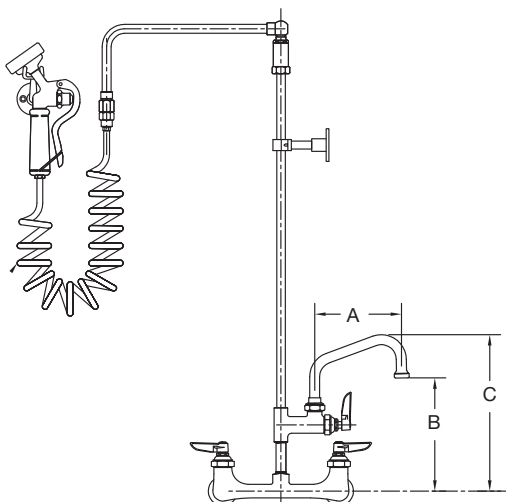


Model No.	"A" Nozzle Spread	"B" Clearance	"C" Height
PG-8DSAV-06	6" (152 mm)	12-7/8" (327 mm)	15-7/8" (403 mm)
PG-8DSAV-08	8" (203 mm)	13-3/16" (335 mm)	15-15/16" (405 mm)
PG-8DSAV-10	10" (254 mm)	13-7/8" (352 mm)	16-5/8" (422 mm)
PG-8DSAV-12	12" (305 mm)	14" (356 mm)	16-3/4" (426 mm)
PG-8DSAV-14	14" (356 mm)	15-1/4" (387 mm)	18" (457 mm)
PG-8DSAV-16	16" (406 mm)	16-1/16" (408 mm)	18-13/16" (478 mm)
PG-8DSAV-18	18" (457 mm)	16-5/8" (422 mm)	19-3/8" (492 mm)



PG-8WOAN-XX Pet Grooming Station

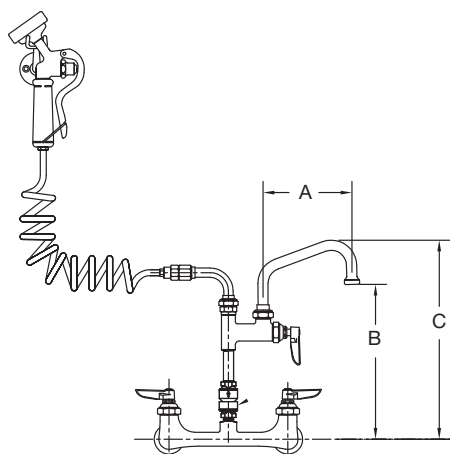
- 8" (203 mm) wall-mount faucet
- ½" NPT female eccentric flanged inlets (00AA)
- 12" (305 mm) overhead arm with swivel
- 9 ft. coiled hose and aluminum spray valve
- Lightweight spray valve for easy, all-day use
- 2-3/8" wall bracket (B-0109-07)
- Add-on faucet with swing nozzle and stream regulator outlet



Model No.	"A" Nozzle Spread	"B" Clearance	"C" Height
PG-8WOAN-06	6" (152 mm)	7-13/16" (198 mm)	10-3/4" (274 mm)
PG-8WOAN-08	8" (203 mm)	8-1/16" (206 mm)	10-7/8" (276 mm)
PG-8WOAN-10	10" (254 mm)	8-13/16" (223 mm)	11-9/16" (293 mm)
PG-8WOAN-12	12" (305 mm)	8-15/16" (226 mm)	11-11/16" (297 mm)
PG-8WOAN-14	14" (356 mm)	10-3/16" (258 mm)	12-15/16" (328 mm)
PG-8WOAN-16	16" (406 mm)	11" (279 mm)	13-3/4" (349 mm)
PG-8WOAN-18	18" (457 mm)	11-9/16" (293 mm)	14-5/16" (363 mm)

PG-8WSAV-XX Pet Grooming Station

- 8" (203 mm) wall-mount faucet
- ½" NPT female eccentric flanged inlets (00AA)
- Vacuum breaker
- 034A swivel adapter
- 9 ft. coiled hose and aluminum spray valve
- Lightweight spray valve for easy, all-day use
- Wall hook
- Add-on faucet with swing nozzle and stream regulator outlet



Model No.	"A" Nozzle Spread	"B" Clearance	"C" Height
PG-8WSAV-06	6" (152 mm)	10-7/16" (265 mm)	13-3/8" (340 mm)
PG-8WSAV-08	8" (203 mm)	10-3/4" (272 mm)	13-1/2" (343 mm)
PG-8WSAV-10	10" (254 mm)	11-7/16" (290 mm)	14-3/16" (360 mm)
PG-8WSAV-12	12" (305 mm)	11-9/16" (293 mm)	14-5/16" (363 mm)
PG-8WSAV-14	14" (356 mm)	12-13/16" (325 mm)	15-9/16" (395 mm)
PG-8WSAV-16	16" (406 mm)	13-5/8" (346 mm)	16-3/8" (416 mm)
PG-8WSAV-18	18" (457 mm)	14-3/16" (360 mm)	16-15/16" (430 mm)



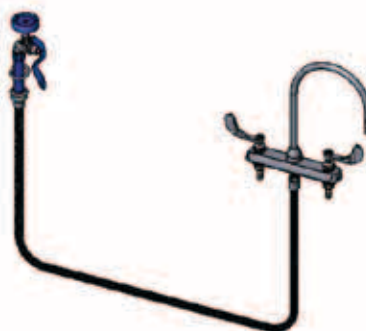
RINSE UNITS

Wash and Rinse Products



B-1174 Deck-Mount Faucet with Spray

- 8" (203 mm) deck-mount faucet
- Side spray with 4 ft. reinforced vinyl hose with hose guide
- 8³/₄" swivel gooseneck with stream regulator outlet
- Lever handles
- 1/2" NPT male inlets
- Includes (150A) tailpieces and nuts for 1/4" NPT connections



B-1176 Deck-Mount Faucet with 7' Spray

- 8" (203 mm) deck-mount faucet
- EB-0107 high flow blue spray valve
- EB-0084-H flexible stainless steel hose (under counter) with hose deck flange
- 8¹³/₁₆" swivel gooseneck assembly with aerator outlet (B-0199-01)
- Wrist action handles
- 1/2" NPT male inlets
- Includes (150A) tailpieces and nuts for 1/4" NPT connections

Note: this model is EPA 2005 Non-Compliant



B-1146-01 Wall-Mount Faucet

- 4" (102 mm) centers wall mounted faucet
- 2¹³/₁₆" swivel gooseneck assembly with stream regulator outlet (131X)
- Lever handles
- 1/2" NPT male inlets
- Includes (150A) tailpieces and nuts for 1/4" NPT connections



B-1146-04 Wall-Mount Faucet

- 4" (102 mm) wall-mount faucet
- 5³/₄" swivel gooseneck assembly (133X-AER) with 2.2 GPM aerator (B-0199-01)
- 4" wrist-action handles
- 1/2" NPT male inlets
- Includes (150A) tailpieces and nuts for 1/4" NPT connections



HANDS-FREE FAUCETS

Equip Electronic Faucets



5EF-1D-DG Deck-Mount Electronic Faucet

- Single hole deck-mount sensor faucet
- 5¹¹/₁₆" rigid gooseneck with vandal-resistant aerator
- Hands-free operation



5EF-1D-DS Deck-Mount Electronic Faucet

- Single hole deck-mount sensor faucet
- 4⁹/₁₆" cast spout with vandal-resistant aerator
- Hands-free operation



5EF-1D-WG Wall-Mount Electronic Faucet

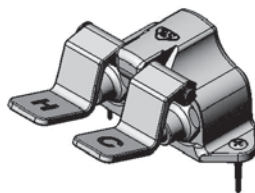
- Single hole wall-mount sensor faucet
- 6³/₈" rigid/swivel gooseneck with vandal-resistant aerator
- Hands-free operation

These electronic faucets include:

- AC/DC control module for ease of installation
- Temperature control mixing valve
- Inlet flex lines



HANDS-FREE FAUCETS Other Hands-Free Assemblies



B-0502 Double Pedal Valve, Floor-Mount

- Inlets on 27¹/₁₆" centers
- 1" (25 mm) from floor to center of inlets
- 1/2" NPT female inlets and outlets



B-0527 Swivel Gooseneck Spout

- Wall-mount with 2" dia. adjustable flange
- 3/8" NPT female inlet
- 61/8" swivel gooseneck (133X-AER)
- B-0199-01 aerator (not shown)



B-0521 Rigid Gooseneck Spout

- Deck-mount 55/16" rigid gooseneck
- B-0199-02 aerator (not shown)
- 1011/16" high from deck to top of gooseneck
- Includes (150A) tailpiece and nut for 1/4" NPT connection



HOSE REELS Epoxy Coated Steel Hose Reels

- Constructed of heavy-duty painted steel
- Long life and easy maintenance

These hose reels include:

- EB-0107 high flow blue spray valve
- 3/8" NPT female inlet
- Adjustable hose bumper
- Multi-fit bracket for wall, ceiling or under counter mounting
- Ratcheting system holds the length of hose until a slight tug; retracts automatically

Installation Note:

If mixing valve is used, check valves should be installed to prevent crossflow of water

B-7242-01 Hose Reel Open Model, 50 ft. Hose

- Open painted steel hose reel
- 50 ft. (15.25 m) of 3/8" I.D. hose

Note: this model is EPAAct 2005 Non-Compliant

B-7232-01 Hose Reel Open Model, 35 ft. Hose

- Open painted steel hose reel
- 35 ft. (10.7 m) of 3/8" I.D. hose

Note: this model is EPAAct 2005 Non-Compliant

B-7212-01 Hose Reel Open Model, 15 ft. Hose

- Open painted steel hose reel
- 15 ft. (4.5 m) of 3/8" I.D. hose

Note: this model is EPAAct 2005 Non-Compliant



HOSE REELS Stainless Steel Hose Reels

- Constructed of heavy-duty, corrosion-resistant stainless steel
- Long life and easy maintenance

These hose reels include:

- EB-0107 high flow blue spray valve
- 3/8" NPT female inlet
- Adjustable hose bumper
- Multi-fit bracket for wall, ceiling or under counter mounting
- Ratcheting system holds the length of hose until a slight tug; retracts automatically

Installation Note:

If mixing valve is used, check valves should be installed to prevent crossflow of water



B-7142-01 Hose Reel Open Model, 50 ft. Hose

- Open stainless steel hose reel
- 50 ft. (15.25 m) of 3/8" I.D. hose

Note: this model is EPAAct 2005 Non-Compliant

B-7132-01 Hose Reel Open Model, 35 ft. Hose

- Open stainless steel hose reel
- 35 ft. (10.7 m) of 3/8" I.D. hose

Note: this model is EPAAct 2005 Non-Compliant

B-7112-01 Hose Reel Open Model, 15 ft. Hose

- Open stainless steel hose reel
- 15 ft. (4.5 m) of 3/8" I.D. hose
- EB-0107 blue spray valve

Note: this model is EPAAct 2005 Non-Compliant



HOSE REELS

Equip Hose Reels

- Constructed of heavy-duty, corrosion-resistant black epoxy coated steel
- Long life and easy maintenance

These Equip hose reels include:

- 5SV-WH black high flow spray valve (not shown)
- 3/8" I.D. hose
- 3/8-18 NPT female inlet on reel
- 3/8-18 NPT male outlet on hose
- Hose is rated to 300 PSI with a maximum temperature of 176°F

Installation Note:

If mixing valve is used, check valves should be installed to prevent crossflow of water



5HR-232 Model



5HR-242 Model

5HR-232-01-GH Equip Hose Reel Open Model, 35 ft. Hose

- Open epoxy coated steel hose reel
- 35 ft. (10.7 m) of 3/8" I.D. hose
- Includes 1/2" male x 3/8" female bushing
- 5SV-WH black high flow spray valve (not shown)
- 3 ft. connector hose with garden hose adapter for optional connection to garden hose threaded hose bibbs

5HR-232-GH Same as 5HR-232-01-GH except without 5SV-WH black high flow spray valve

5HR-242-01-GH Equip Hose Reel Open Model, 50 ft. Hose

- Open epoxy coated steel hose reel
- 50 ft. (15.25 m) of 3/8" I.D. hose
- 5SV-WH black high flow spray valve (not shown)
- 3 ft. connector hose with garden hose adapter for optional connection to garden hose threaded hose bibbs



HOSE REEL ACCESSORIES

Spray Valves and Water Guns



MV-2522-24 Front Trigger Water Gun

- Heavy-duty stainless steel construction
- Blue rubber cover
- Adjustable stream from solid to soft spray
- Excellent for cleaning jobs
- Controls water supply easily and efficiently
- Automatic shut-off conserves water
- Rated up to 200 PSI
- 1/2" NPT male x 1/2" hose barb (included)
- 1/2" NPT female inlet
- 5/16" orifice

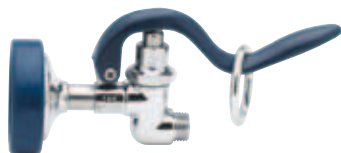


5WG-1000-01 Equip Water Gun (left)

- Water gun with quick-disconnect and 1/2" NPSM and 3/8" NPT female adapters

EB-2322 Extended Spray Wand

- Spray valve with self-closing squeeze valve and extension for 21 3/4" total length
- 3/8" NPT female inlet
- Blue handle grip with hold-down ring
- Removable spray head



EB-0107 High Flow Spray Valve

- Blue spray valve
- Connects directly to hose grip handle
- Hold-down ring for constant water flow
- Shuts off when handle is released



EB-0107-035 High Flow 35° Angled Spray Valve

- Blue spray valve with 35° spray head
- Connects directly to hose grip handle
- Hold-down ring for constant water flow
- Shuts off when handle is released



5SV-WH Equip High Flow Spray Valve

- For use on all 5HR-series hose reels
- 3/4-14 male inlet
- Includes spray valve and handle (not shown)



MV-3516-25 Aluminum Rear Trigger Water Gun

- Aluminum water gun with 5/16" flow orifice
- Blue rubber cover
- Includes 1/2" NPT x 3/8" NPT female adapter (not shown)

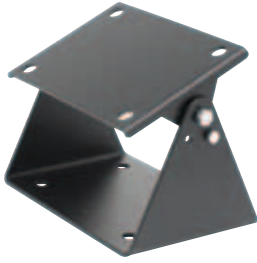


HOSE REELS

Hose Reel Brackets

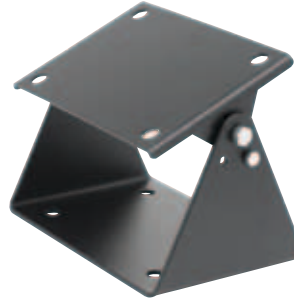


RELIABILITY BUILT IN™



G016636-45 Swing Bracket

- Epoxy coated steel
- Fits all T&S 3/8" x 15', 30' and 35' epoxy coated hose reels
- Mounting hardware not included

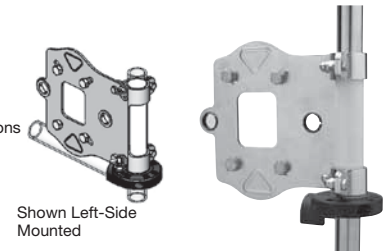
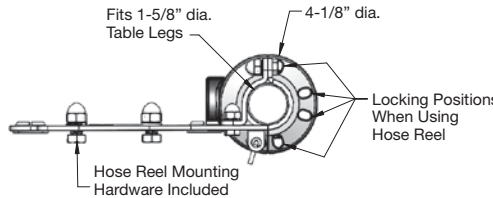


G016637-45 Swing Bracket

- Epoxy coated steel
- Fits all T&S 3/8" x 50' and all 1/2" hose reels
- Mounting hardware not included

G018477-45 Table Leg Bracket

- Stainless steel hose reel swing bracket
- Fits all T&S 3/8" and 1/2" hose reels
- Spring loaded latch
- Can be mounted as left- or right-side



OTHER MODELS

And Accessories



B-0665-BSTR Service Sink Faucet with Top Wall Brace

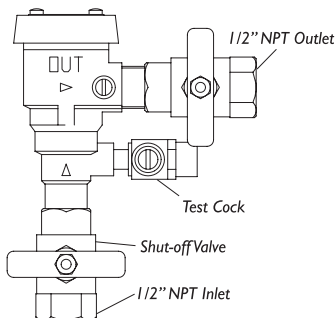
- 8" (203 mm) wall-mount faucet
- Rough chrome plated finish
- Built in screwdriver stops
- Vacuum breaker nozzle with 3/4" garden hose thread and pail hook
- 2 11/16" clearance form wall to center line of faucet
- 9 1/8" from wall to center of outlet
- 1/2" NPT female eccentric flanged inlets (00AA)
- Includes spring checks



MV-0771-12C Mixing Valve

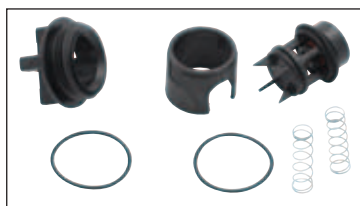
- 3/4" NPT mixing valve
- 3/4" globe valves with color coded handles
- In-line check valves
- 3/4" unions
- Rough plated chrome

MV-0771-12N Same as MV-0771-12C except unplated brass



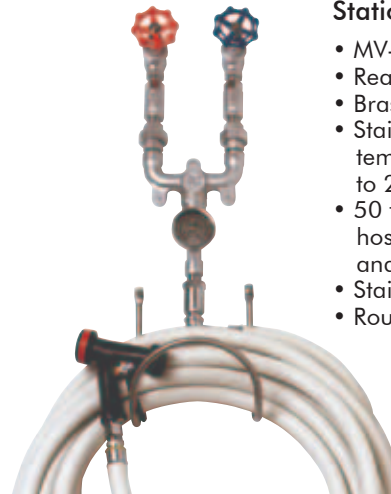
B-0963 Continuous Pressure Vacuum Breaker Assembly

- Designed for continuous pressure
- Furnished with quarter-turn ball valves
- 1/2" NPT inlet and outlet
- 001359-40 adapters available for 3/8" NPT
- Order B-0963-RK repair kit (shown below)



MV-0771-12CW Washdown Station Assembly

- MV-0771 3/4" mixing valve
- Rear trigger water gun
- Brass thermometer tee
- Stainless steel thermometer, temperature range from 0°F to 200°F
- 50 ft. (15.25 m) high pressure hose with brass couplings and swivel fittings
- Stainless steel hose rack
- Rough plated chrome



MV-0771-12NW Same as MV-0771-12CW except unplated brass



EYEWASH STATIONS

Safety Equipment Models and Accessories

All Eyewash Stations include:

- Universal emergency eyewash sign
- "Test This Week" tag to record weekly testing record of equipment



EW-7360B Wall Mounted Eye/Face Wash

- ABS green plastic eyewash head with laminar flow
- Integral flip top dust cover
- Round stainless steel receptor with chrome plated brass stay open ball valve, 1/2" NPT inlet, 1 1/4" NPT waste



EW-7611 Countertop Mounted Pull Down Eye/Face Wash Unit

- Polished chrome plated brass eye/face wash swings forward to activate
- ABS green plastic head with laminar flow
- Integral flip top dust cover
- Can be mounted on either right or left side of sink
- Supply: 1/2" O.D. slip joint

EW-8904 Counter Mounted Laboratory Eye/Face Wash Unit

- Countertop mounted eye/face and body spray
- Head positioned at 45° angle
- Stay open squeeze lever valve
- 8 ft. swivel hose with 1/2" NPT inlet and deck flange that incorporates guiding key slot for proper positioning of spray



EW-7501 Nine-Gallon Portable Gravity Fed Eyewash Unit

- Nine-gallon capacity, high-density green polyethylene tank provides full pattern flushing at .4 GPM for a full 15 minutes
- Fold down eyewash arm has positive upper limit stop that covers and protects spray outlets when not in use

- Wide-fill opening for easy inspection, cleaning and filling
- ABS plastic eyewash heads with tripod anchor, stainless steel socket head cap screw and rubber gasket
- Includes wall bracket

- Eyewash preservative to permit storage of water for up to three months (sold separately; see EW-9082 bottle, right).

Note: Unit must be wall hung



EW-7612 Swing Away Eyewash Unit

- Countertop mounted polished chrome plated brass eye/face wash unit with swing-away feature to activate
- Mounted on right side of sink
- Polyethylene dust cover
- Supply: 1/2" O.D. slip joint



EW-7612LH Swing Away Eyewash Unit

- Same as EW-7612 except mounted on left side of sink



J
10



Our toll-free number, 1-800-476-4103, connects you to T&S Customer Service representatives. You can also access information about these and other T&S products on our website, www.tsbrass.com

NOTE:

A comprehensive *Index By Model or Part Number and Page* can be found in the **G-11 General Product Catalog Master Index** section (IN).



Can't find the T&S product you're looking for?

Please visit www.tsbrass.com for a complete product listing.



RELIABILITY BUILT IN™