

tile & grout Spinners®



8903
Wand Style



8904
T-Handle Style

A new spin on hard surface cleaning.

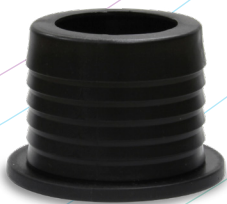
Designed with the professional in mind, the Tile & Grout Spinner® uses high pressure to simultaneously power wash and extract water from a variety of hard surfaces such as concrete, grouted tile, ceramic tile, rubber studded floors and more. The Tile & Grout Spinners® set a new standard in hard surface cleaning.

Features

- Removable brush ring with built-in vacuum relief for instantly dry surfaces!
- Low profile for cleaning under toe kicks and hard-to-reach areas
- Re-buildable flange mounted swivels
- Durable Carbide seals
- Replaceable skirt brush
- Tested at 500 PSI, recommend at least 800 PSI for operation.



8908
Counter Spinner®



The 8903 & 8904 include an adapter for 2" hoses and a specially designed wrench for easy removal of the spray bar!

