

A photograph of two industrial workers. In the foreground, a man wearing a blue hard hat and safety glasses is looking down at a machine. In the background, a woman wearing a white hard hat and safety glasses is also looking at the machine. The machine is blue and has some glowing lights. The background is slightly blurred.

SPC INDUSTRIAL™

Product Guide:
Add-A-Level™

We are **SPC Industrial™**

SPC Industrial™ is a family owned and operated, Michigan based company with more than 30 years experience designing and manufacturing Ergonomic, Safety, and Material Handling products for industry. Our products are made from recycled plastic and built around a patented, easy, no-tool, modular system and are distributed through the world's leading industrial supply catalogs and a network of distributors and specialty industrial manufacturing representative companies. SPC Industrial™ serves a global market of companies and provides a personal level of service that exceeds expectations and delivers results for industry.

Meet Your **Account Manager**



MARY BERKLICH

Mary Berklich has more than 25 years of experience in sales and marketing management within the manufacturing industry. Throughout her professional career, she has helped support her clients with creativity, insightful analysis, hard work, and clear communication.

Mary's dedication to meeting client goals paired with her multifaceted background and enthusiastic attitude allows her to develop tailored solutions to unique challenges.



Table of Contents

PAGE 3 **ABOUT ADD-A-LEVEL™**

PAGE 5-12 **APPLICATION ZONES**

PG. 5 **Modular Production Line**

PG. 7 **Fixed Workstation**

PG. 9 **Temporary Station**

PG. 11 **Decontamination Area**

PAGE 13-16 **CASE STUDIES**

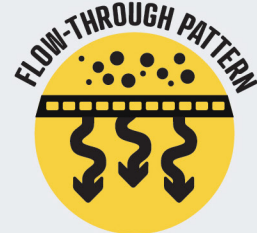
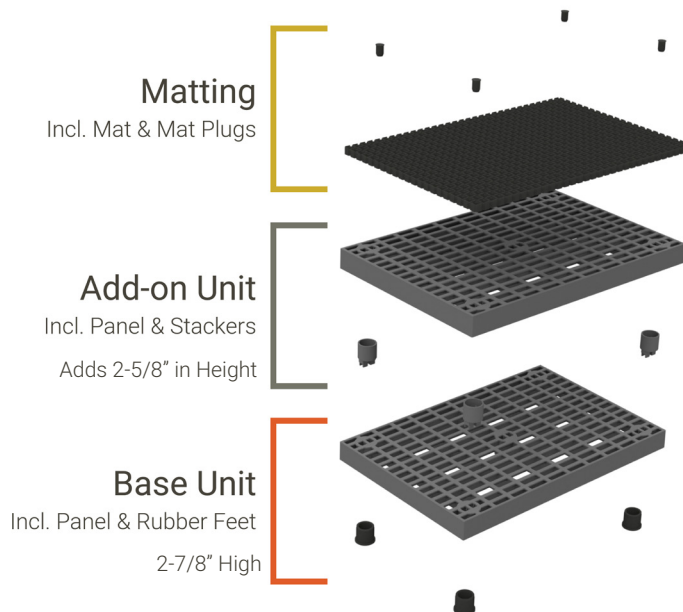
PG. 13 **Ohio State Ergonomics**

PG. 15 **Bericap**

PAGE 17 **PLANNING & DESIGN SERVICE**

About Add-A-Level™

Our modular, stackable work platforms create the perfect working height for your operations. Add-A-Level™ is easily assembled without tools and can stack horizontally to fill a floor, or vertically to give your employees a lift!



Add-A-Level™ Base Unit

KIT INCLUDES:

Grid Panel • Rubber Feet



SIZES AVAILABLE

36" x 16"/24"/36"

48" x 24"

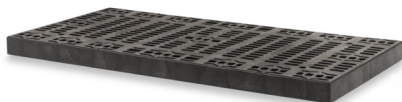
66" x 16"/24"/36"

96" x 16"/24"/36"

Add-A-Level™ Add-On Unit

KIT INCLUDES:

2-5/8" Thick Add-On Unit • Stackers



SIZES AVAILABLE

36" x 16"/24"/36"

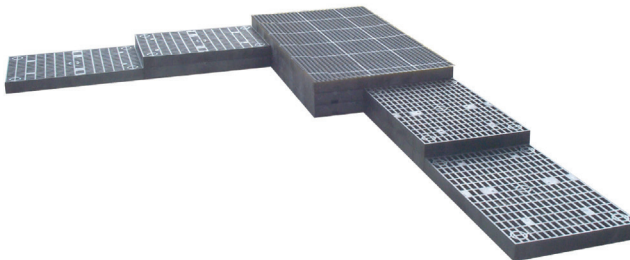
48" x 24"

66" x 16"/24"/36"

96" x 16"/24"/36"

SIZES	PART #	DESCRIPTION	WEIGHT
36" x 16"	A3616B	36" x 16" Base Unit	9 lbs
	A3616A	36" x 16" Add-on Unit	9 lbs
66" x 16"	A6616B	66" x 16" Base Unit	16 lbs
	A6616A	66" x 16" Add-on Unit	16 lbs
96" x 16"	A9616B	96" x 16" Base Unit	21 lbs
	A9616A	96" x 16" Add-on Unit	21 lbs
36" x 24"	A3624B	36" x 24" Base Unit	12 lbs
	A3624A	36" x 24" Add-on Unit	12 lbs
	M23780	36" x 24" Black Mat	17 lbs
48" x 24"	A4824B	48" x 24" Base Unit	15 lbs
	A4824A	48" x 24" Add-on Unit	15 lbs
	M24780	48" x 24" Black Mat	22 lbs
66" x 24"	A6624B	66" x 24" Base Unit	20 lbs
	A6624A	66" x 24" Add-on Unit	19 lbs
	M25780	66" x 24" Black Mat	29 lbs
96" x 24"	A9624B	96" x 24" Base Unit	30 lbs
	A9624A	96" x 24" Add-on Unit	29 lbs
	M28780	96" x 24" Black Mat	44 lbs
36" x 36"	A36364B	36" x 36" Base Unit	18 lbs
	A3636A	36" x 36" Add-on Unit	18 lbs
	M33780	36" x 36" Black Mat	25 lbs
66" x 36"	A6636B	66" x 36" Base Unit	31 lbs
	A6636A	66" x 36" Add-on Unit	31 lbs
	M35780	66" x 36" Black Mat	46 lbs
96" x 36"	A9636B	96" x 36" Base Unit	45 lbs
	A9636A	96" x 36" Add-on Unit	44 lbs
	M38780	96" x 36" Black Mat	66 lbs

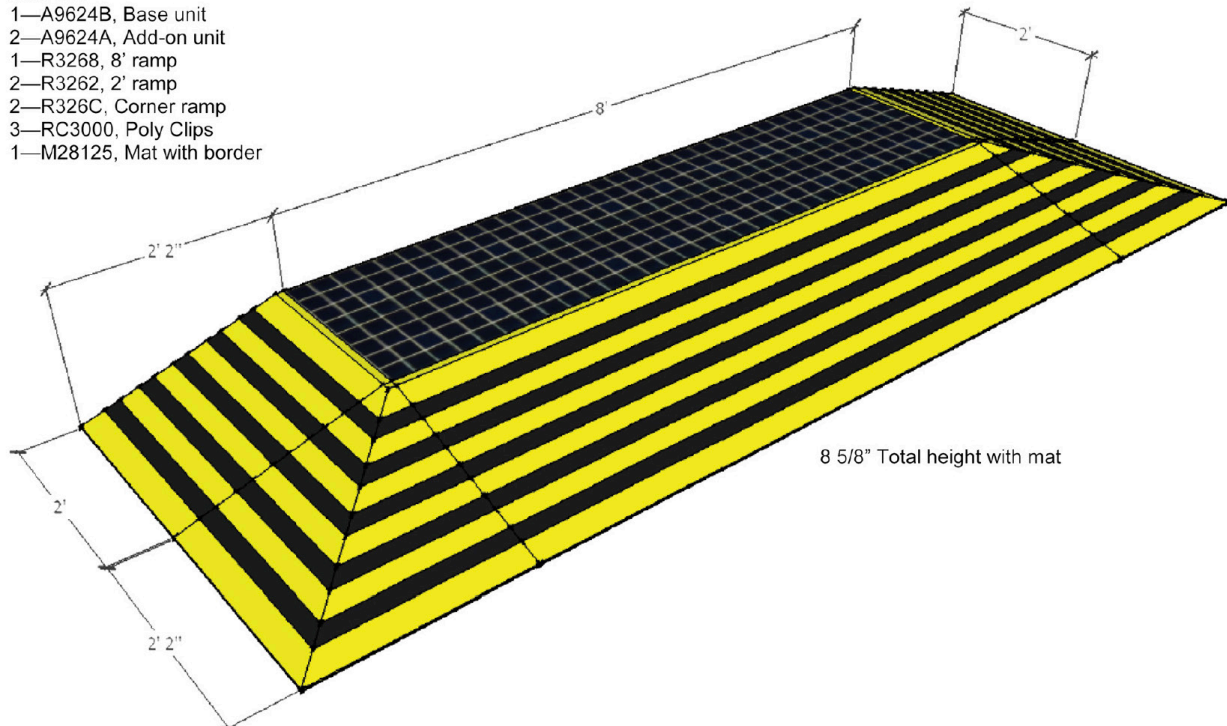
Zone 1: Modular Production Line



STANDARD LINE SET-UP WITH SAFETY RAMPS

Item List

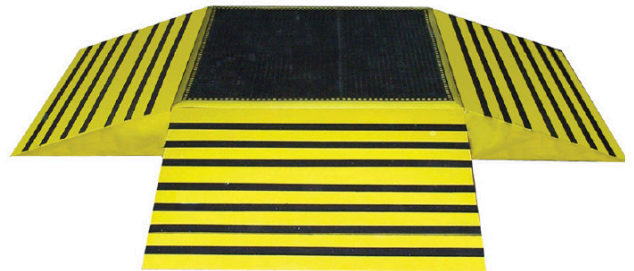
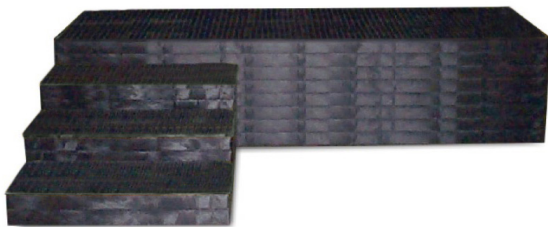
- 1—A9624B, Base unit
- 2—A9624A, Add-on unit
- 1—R3268, 8' ramp
- 2—R3262, 2' ramp
- 2—R326C, Corner ramp
- 3—RC3000, Poly Clips
- 1—M28125, Mat with border



INCREASE THE LEVEL OF PERFORMANCE

- Reduce work related injuries and claims
- Streamline production, increase productivity
- Modular system adapts to workplace needs

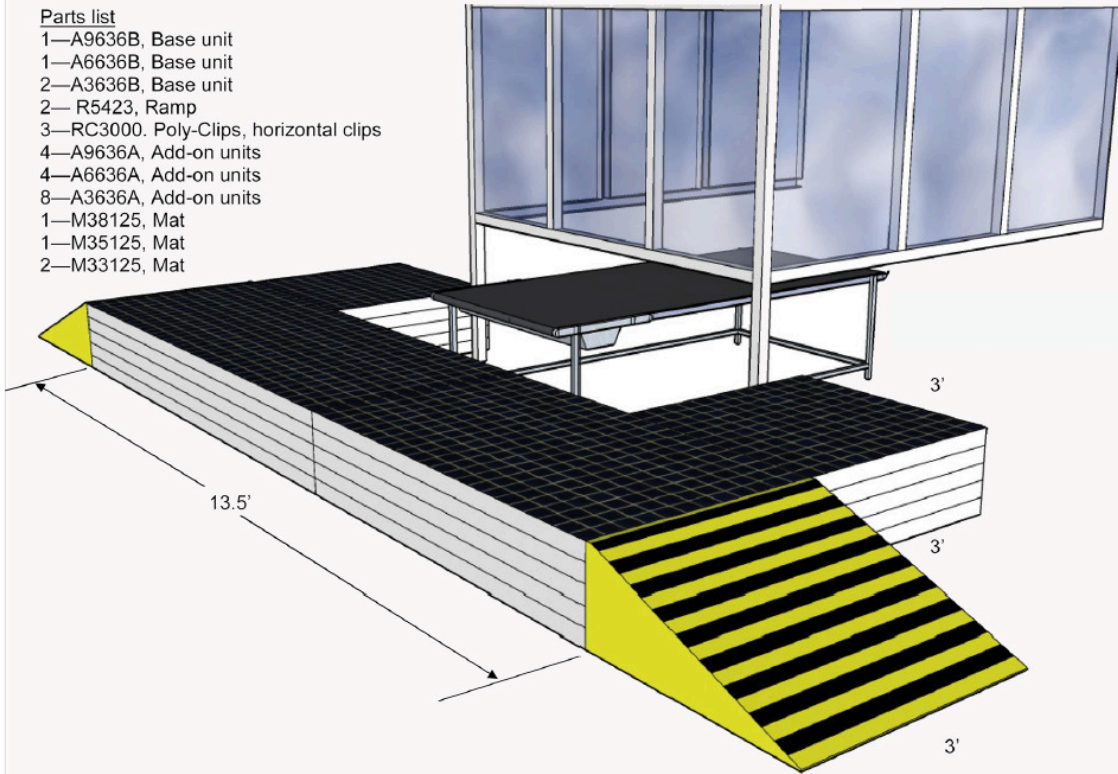
Zone 2: Fixed Workstation



CUSTOM LAYOUT WITH SAFETY RAMPS

Parts list

- 1—A9636B, Base unit
- 1—A6636B, Base unit
- 2—A3636B, Base unit
- 2—R5423, Ramp
- 3—RC3000, Poly-Clips, horizontal clips
- 4—A9636A, Add-on units
- 4—A6636A, Add-on units
- 8—A3636A, Add-on units
- 1—M38125, Mat
- 1—M35125, Mat
- 2—M33125, Mat



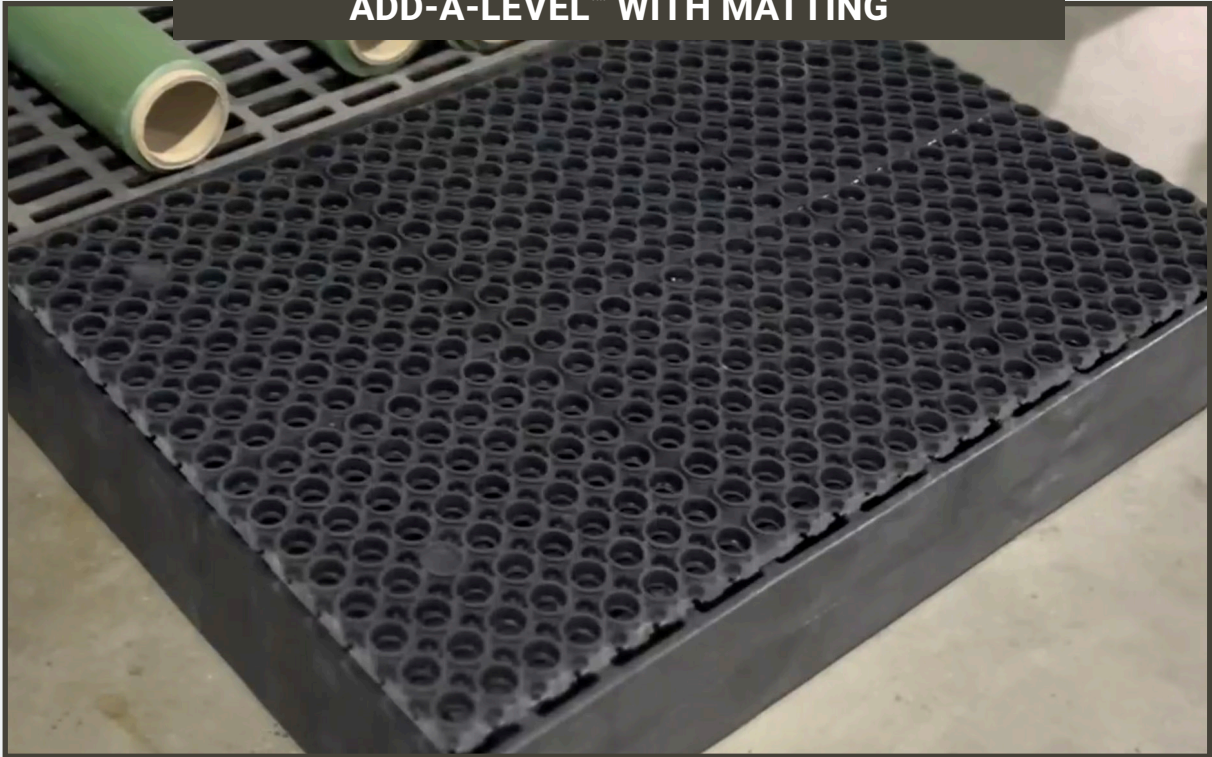
FIT MOST ANY FLOOR SPACE

- Ten sizes available - modular, stackable, adjustable height
- Configuration layouts that fit around tough spaces
- Anti-slip matting and yellow borders highlight elevation change

Zone 3: Temporary Station



ADD-A-LEVEL™ WITH MATTING



ERGONOMIC SOLUTIONS WITH EMPLOYEES IN MIND

- Raise workers to appropriate working height
- Lightweight, easy lifting, no tools required
- Rubber feet on Add-A-Level Base Units stabilize work platforms

Zone 4: Decontamination Area

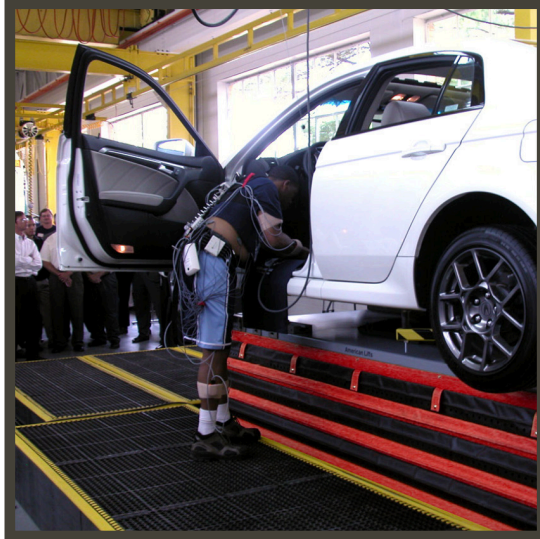




STEP UP TO SAFETY

- Chemical resistant, recycled plastic
- Flow through design
- Raise workers off dangerous, slippery floors

Success Story: Ohio State Ergo Lab



CHALLENGE

When Ohio State University was establishing its Center for Occupational Health in Automotive Manufacturing in 2007, they wanted to create a new state-of-the-art, ergonomics lab for students that would serve as a platform for automobile manufacturing suppliers to demonstrate new technologies and potential solutions for occupational health.

SOLUTION

SPC Industrial™ was requested to specifically install Add-A-Level™ work platforms to demonstrate and measure the impact of elevation changes on productivity and health issues (fatigue, musculoskeletal stresses, etc.) in the work place.

RESULTS

From the data and results derived from ergo lab, the manufacturing industry is able to provide a healthier environment to its work force by reducing risk of injury while increasing productivity and streamlining manufacturing processes. SPC Industrial™ contributed to the solution for improving work environments and productivity.



Success Story: Bericap



CHALLENGE

Steve, a Maintenance Administrator for Bericap (a manufacturer located in Cowpens, South Carolina), required a raised platform for a machinist to work safely at his work station. The challenge was to create an easy and affordable solution that was a good ergonomic fit, free from trip hazards.

SOLUTION

The end result: we provided a raised work surface area, 48" x 48" x 6"H, created by using our Add-A-Level™ platform system and anti-fatigue matting. To eliminate trip and fall hazards, we created custom ramps for three sides of the work station.

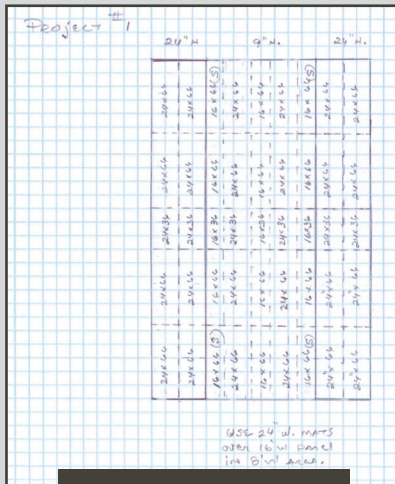
RESULTS

The client was so happy about the installation he sent us these photos and said, "SPC, thanks for the help in getting the special order platform, ramps, and mat made. We received them yesterday. I've attached pictures of our assembly. **Everything worked out perfect!**"

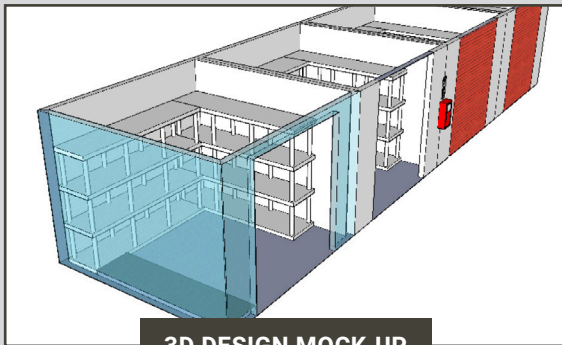


Planning & Design Services

Our team works to design and develop custom solutions to fit a multitude of industry spaces and applications. Our free planning and design services provide recommendations and solutions to manufacturers that are flexible and improve efficiency.



LOOSE SKETCH & IDEA



3D DESIGN MOCK-UP



ASK ABOUT OUR
**COMPLIMENTARY
LAYOUT & DESIGN**

NOTES

This image shows a single page of white paper with horizontal blue or grey ruling lines. The lines are evenly spaced and run across the width of the page, leaving small margins at the top and bottom. There are no vertical margin lines, text, or other markings on the page.

CONTACT US

MARY BERKLICH

National Account Manager

800.523.6899 ext. 212

mberklich@spcindustrial.com