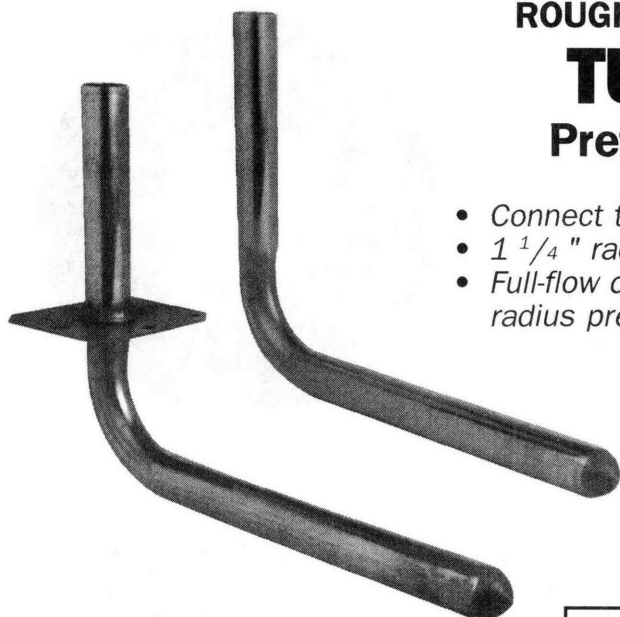




PREFORMED
COPPER - SWEAT

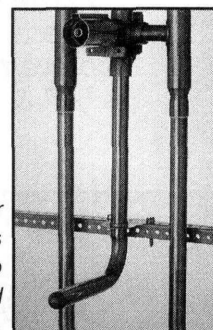


ROUGH-IN ready™ Preformed Copper Tube

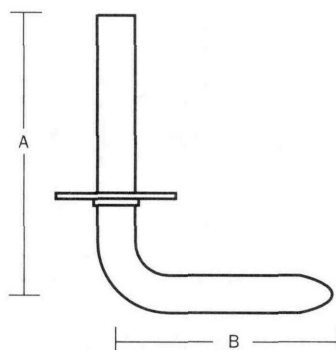
TUB SPOUT ELL

Preformed Tub Elbow Fitting

- Connect tub valve to spout nipple in one easy step!
- 1 1/4" radius fits all valve rough-ins.
- Full-flow capacity I.D. and longer bend radius prevent "water stacking."



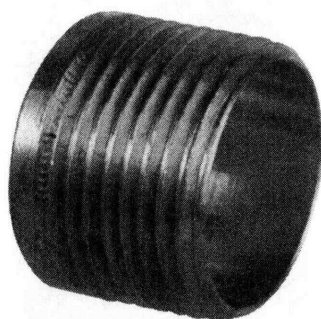
Eliminates sweat elbows, drop ear ells, and caps! Square O Strap is crimped on and affixes easily to Edge bracket or any backing board for solid installations.



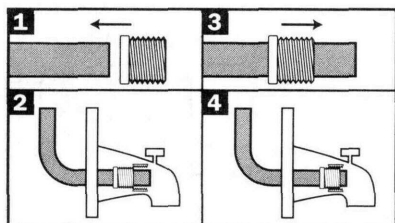
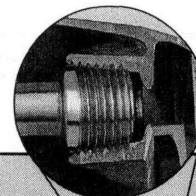
Item No.	Nom. Tube Size	Type	Dimensions			Box	List Price Each
			A	B	Radius		
STANDARD TUB SPOUT ELL							
613-57	1/2"	L	5"	7"	1-1/4"	50	1.94
613-67	1/2"	L	6"	7"	1-1/4"	50	2.10
613-87	1/2"	L	8"	7"	1-1/4"	50	2.40
613-137	1/2"	L	13"	7"	1-1/4"	50	3.16
613-139	1/2"	L	13"	9"	1-1/4"	50	3.58
TUB SPOUT ELL with SQUARE O STRAP							
613-57E	1/2"	L	5"	7"	1-1/4"	25	2.70
613-87E	1/2"	L	8"	7"	1-1/4"	25	3.15

SWEAT MALE ADAPTER

Brass FULL SLIP Female Sweat x MIP Thread



- Eliminates tedious measuring.
- 3/4" and 1" sizes are ideal for closet or urinal stub out adapters.
- Replaces male adapters when hex is not necessary.



1. Slide slip adapter onto copper tube, threads out.
2. Push adapter to desired location **with tub spout**.
3. Slide slip adapter 1/4" toward open end.
4. Solder adapter in place, let cool, install tub spout.



1/2" size is ideal for use with our 612 & 613 series tub spout ells.

Item No.	Description	Box Qty.	Mstr Crtn	List Price Each
614-2	1/2" female sweat x 1/2" MIP thread	50	500	.75
614-3	3/4" female sweat x 3/4" MIP thread	50	500	1.30
614-4	1" female sweat x 1" MIP thread	25	250	1.80