

Structural Concepts®



Reveal®

WHAT YOU DON'T SEE MAKES ALL THE DIFFERENCE

Reveal® is a collection of frameless glass, food display merchandisers designed to blend in with its surroundings. Simple and minimal in appearance, the focus is on the food, not the case. The minimalistic, European-influenced design features UV-bonded glass that provides superior refrigeration and heating performance.

Reveal® offers a variety of models with multiple options and mix-and-match capabilities allowing you to design for any environment. This collection of cases has been rigorously tested to guarantee safe arrival and reliable performance. Nowhere else will you find the perfect combination of form and function.

FEATURES

- Variety of finishes offered
- Minimized interior components
- Adjustable rear-mounted shelves
- Removable reflective rear sliding doors
- UVIG condensation-free glass
- Breeze-E slide-out refrigeration
- Designed for NSF Type II environments
- Protected and secure shipping
- Removable installation handles
- Made in the USA



PERFECT FOR ANY ENVIRONMENT

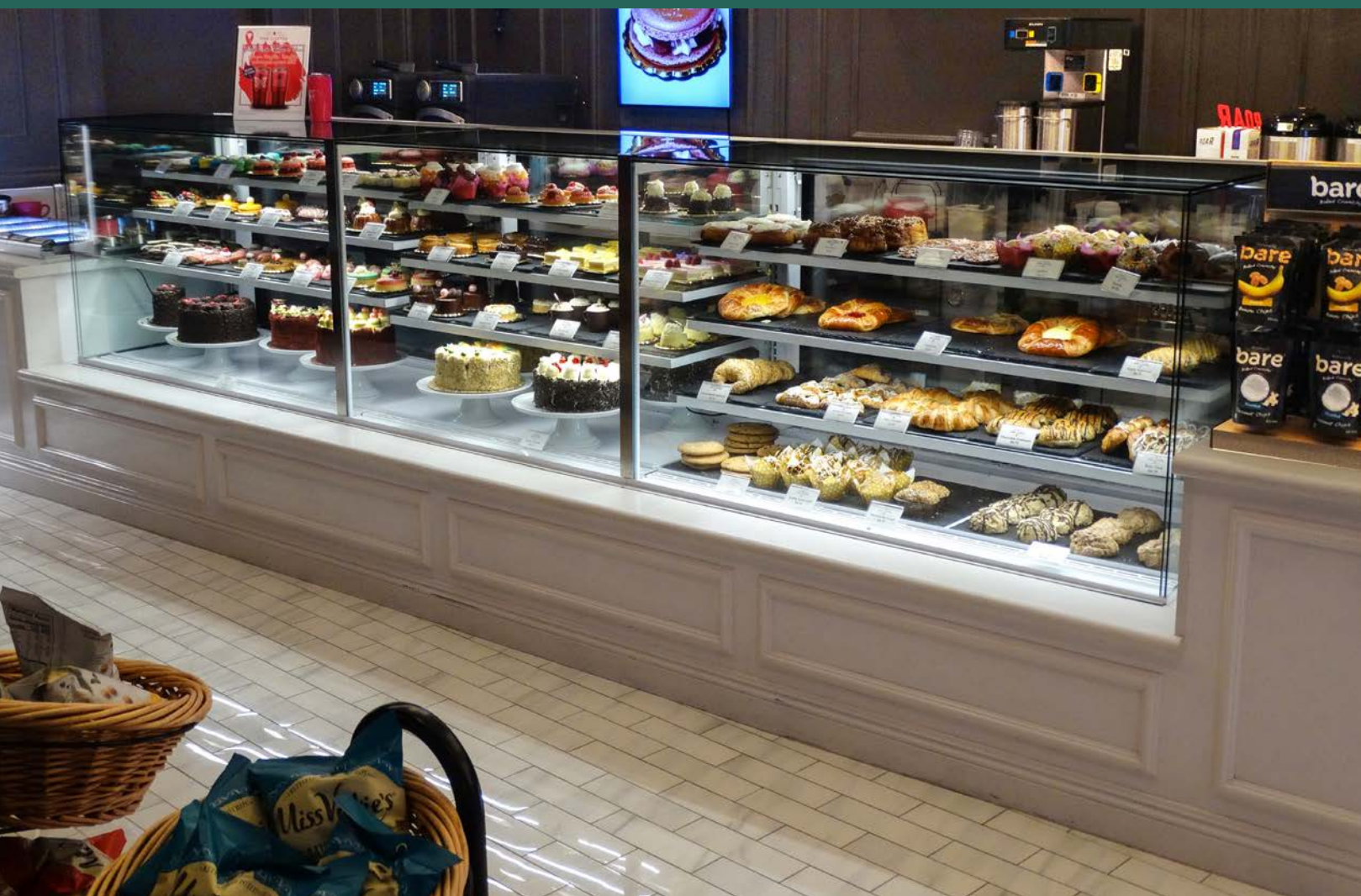
We've engineered Reveal® for a variety of applications, providing nearly unlimited possibilities to display fresh food almost anywhere. Reveal® offers models in styles and sizes that can be built into millwork or used as freestanding and mobile displays. Mix and match models for a customized presentation of the product that encourages impulse buying, cross-merchandising, and increases sales.

WHERE

- Hospitality
- Healthcare
- Corporate Dining
- Café
- Bakery
- Cannabis

HOW

There are many ways to integrate displays into your foodservice operation to bring fresh food solutions to customers. With Reveal® models, displays can be built into counters, walls, or other millwork pieces to blend with and complement any setting. They can also be used as freestanding displays and our mobile option allows flexibility for use anywhere.





SERVICE

Cases that provide the ultimate level of control over products and allow you to take care of your customers' specific requests with 1:1 service while providing maximum visibility to the displayed goods.

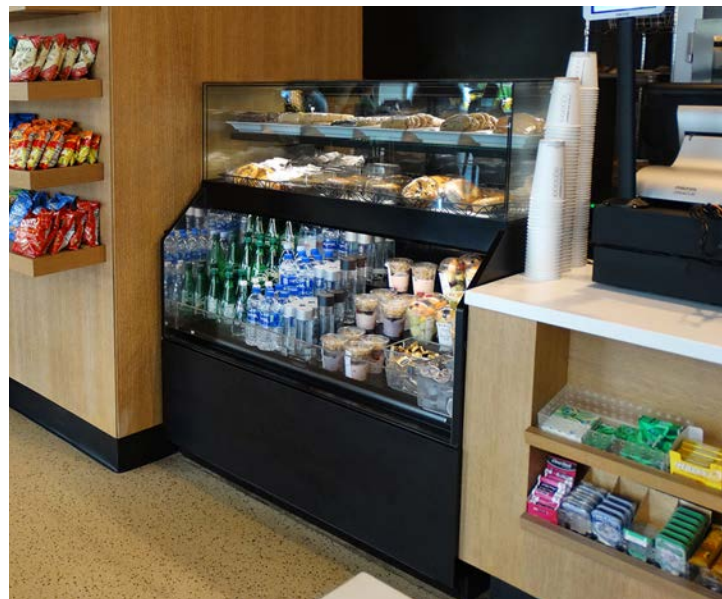
- UV-bonded glass design
- Slide-in, Freestanding or Countertop
- Refrigerated, Non-Refrigerated or Heated
- Narrow depth to fit through doors
- Four heights available
- 3', 4', 5' & 6' nominal lengths



SELF-SERVICE

Grab & Go open front display cases provide quick and easy access to fresh food without the hassle of doors.

- Reach-in open front with glass ends
- Slide-in, Freestanding or Mobile
- Refrigerated, Non-Refrigerated or Heated
- Narrow depth to fit through doors
- Four heights available
- 3', 4', 5' & 6' nominal lengths



COMBINATION

A case that offers multiple display areas to optimize floor space. Choose from refrigerated, non-refrigerated, prep and grab & go combination models available in various lengths and styles perfect for varying daypart menus.

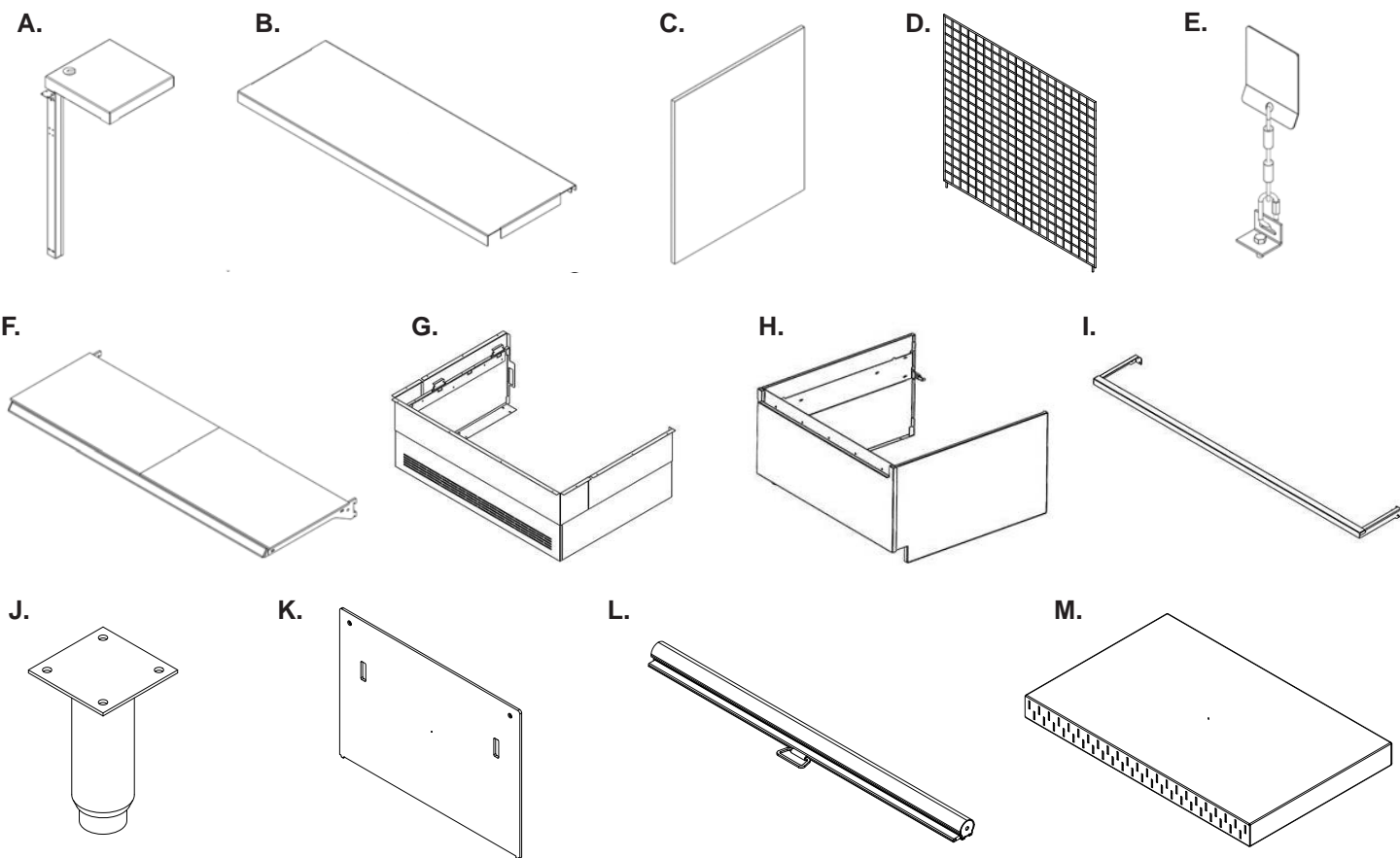
- Convertible service above refrigerated self-service
- Freestanding
- Narrow depth to fit through doors
- Two heights available
- 3', 4', 5' & 6' nominal lengths



ATTRACTIVE FROM ANY ANGLE

Reveal® is the first completely frameless glass food display. The design intent was to find the perfect blend of form and function; to provide a hardworking merchandiser that quietly becomes one with the environment when displaying product. With emphasis on superior functionality, Reveal® refrigerated service models take things a step further to showcase box-within-a-box construction, made possible through the use of Insulated Glass (UVIG) technology. This thoughtful design forms ample air space between glass panes to provide the insulation needed to prevent condensation and allows the glass-to-glass seams of the box to virtually disappear, eliminating any distraction from the food inside.

REVEAL MORE WITH ACCESSORIES



A. Scale Stand - Fits Service and Self-Service cases. Refrigerated and Ambient cases. Swivels and nests in four spots. All scales must be placed on a scale stand, as the maximum weight limit on the case glass is 5 pounds. Can be ordered any time.

B. Solid Stainless-Steel Shelves - Replaces glass with metal. Slips over existing brackets. Must be ordered with case. *Cannot be combined with tag mold

C. Solid End Panels - Replaces end glass with mirrored panel. Service or Self-Service. Must be ordered with case. *Available on Refrigerated and Ambient cases

D. Wire Security Cover - Replaces acrylic cover. Can be ordered any time.

E. Seismic Restraint - Stick on plate, cable and lag. Can be ordered any time.

F. Tag Mold - Replaces front support cover. Aluminum tag mold. Angled upward for ease of viewing. Can be ordered any time. *Cannot be ordered with solid shelves

G. Upper Front Discharge - Available for refrigerated NR cases. Intake or discharge. Allows air over a knee wall. Must be ordered with case.

H. Adjustable Lower Cladding - Front or rear access. Allows for millwork that exposes open area below the display. Available for refrigerated & ambient NE cases. Must be ordered with case.

I. Additional Top Light - Combo cases upper section only. Used in lieu of the upper shelf. Must be ordered with case.

J. 6\"H Stainless Steel Legs - Must be ordered with case.

K. Acrylic Security Cover - Removable, locking clear acrylic security cover. Can be ordered any time.

L. Night Curtain - Non-locking, magnetic, energy-efficient, retractable. Black vinyl w/ black handle. Cannot be used with solid security cover. Can be ordered at any time.

M. 2\"H Full Depth Display Risers - For lower display in combo cases. Also available in 4\"H. Can be ordered at any time.



IT'S THE LITTLE THINGS...

Get more out of Reveal with the latest accessories for a new, or existing, Reveal case. The collection of Reveal accessories provides an opportunity to customize the case adding appeal and convenience for customers and owners alike.

Solid, mirrored end panels and additional lighting in dark or busy environments will enhance the overall aesthetic of the case, drawing attention to the interior display. Switch things up with a different cladding option or stainless steel shelving, instead of glass, for a new look. Add a scale stand that swivels and nests in four locations atop the case for valuable added functionality, making the case work harder, increasing efficiency and improving customer service. Specify seismic restraint (if applicable), a night curtain or wire security grid, instead of an acrylic cover, for additional safety.

Check Spec Sheets for available models.



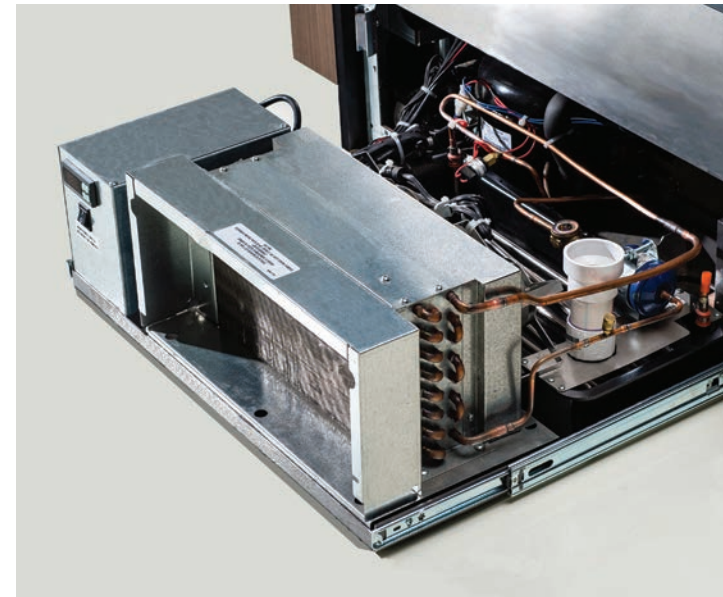
SAFE FOR ANY PRODUCT

Reveal® is designed and tested to maintain safe food temperatures.

Each refrigerated model comes with an easy-to-access refrigeration system to simplify maintenance and improve functionality. The UV-bonded double-pane design ensures safe food temperatures and a condensation-free display.

The display is powered by the Breeze-E refrigeration system, ensuring superior performance in real-world conditions. In today's market, only Reveal® features exceptional refrigeration in tandem with state-of-the-art display capabilities.

EnergyWise system reduces daily energy consumption by more than 50%. NSF Type II refrigeration ensures reliable performance in higher ambient environments – operating in 80°F and 60% humidity.



SLIDE-OUT REFRIGERATION

Flexible synthetic hosing instead of copper tubing allows the refrigeration system to slide out repeatedly without risk of refrigerant leaks. All refrigeration components can be easily reached for cleaning or adjustment, with no tools needed.



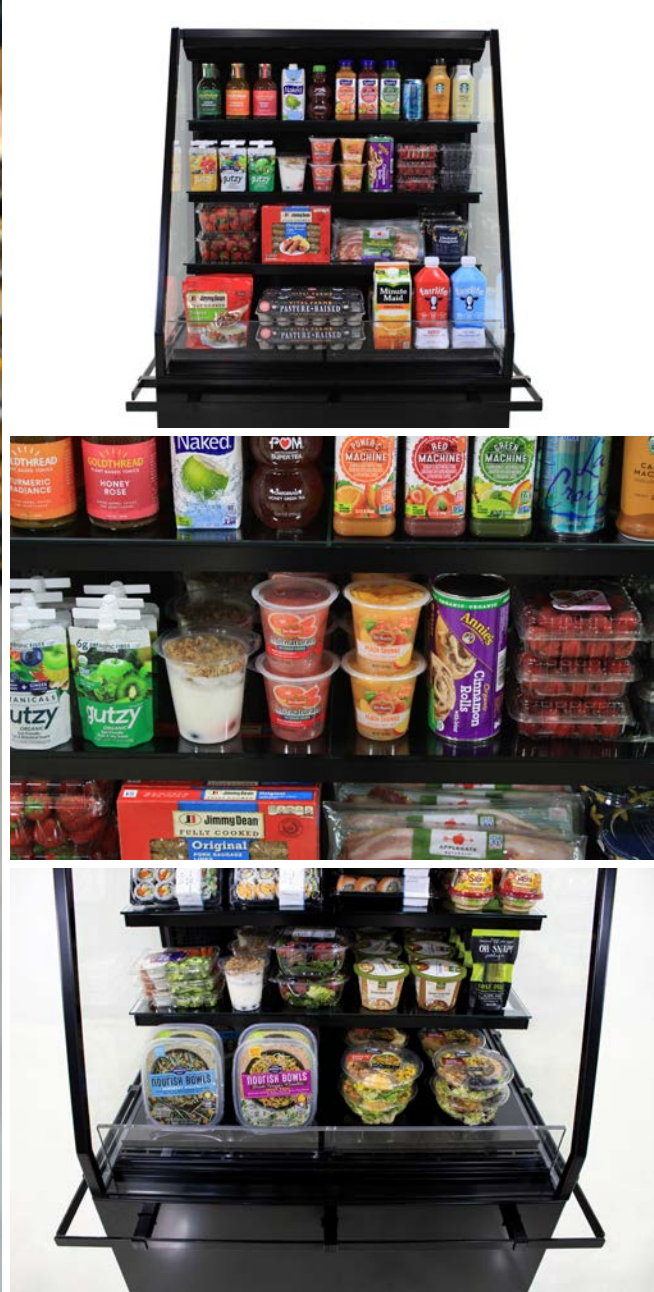
MICROPROCESSOR CONTROLLER

The electronic controller recognizes ambient conditions and adjusts the defrost cycles automatically. This feature eliminates the ice buildup and fluctuating conditions associated with mechanical time clocks, resulting in consistent temperatures – the key to product shelf-life and profits.



HOT GAS CONDENSATION PAN

Rather than using an electric pan and heating element, hot gas from the compressor runs through tubes to burn off defrost water, which reduces total daily energy consumption by more than 25%. Add a high-efficiency compressor and rifle tube coils to reduce energy consumption even further, more than 50%.



HOT OPPORTUNITIES

Heated Reveal Cases are here! Our new heated Reveal models provide the same level of high-quality performance and reliability as the rest of the Reveal offering. Designed with convection style heating technology that emulates a hot air “envelope” to encapsulate the product consistently in heat ensures the best possible product experience, unlike competing cases that use heated shelving that only warms the top or bottom of the product causing the bottom to be too hot and continue to cook and the top of the product to be cooler than desirable or doughy.

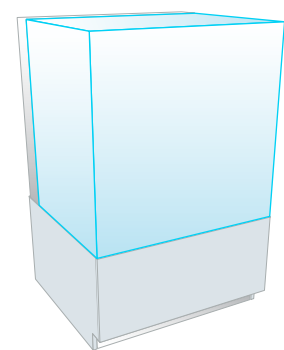
Two types of models are available, floor-based cases, and slide-in counter cases. Heated models can be joined with other heated cases in a case-to-case design. All service models feature front doors that open for easy access for cleaning. LED lighting is available in 3000K, 3500K and 4000K.

REVEAL MORE ON THE MOVE

Introducing the Reveal Mobile Case! This latest addition to the Reveal family is a refrigerated self-service display on locking casters. The Reveal Mobile Case allows for ultimate merchandising flexibility. Unlike mobile islands, these cases can be easily pushed up against shelving, walls, columns, or used back to back. The mobile case also uses less floor space by displaying the product vertically.

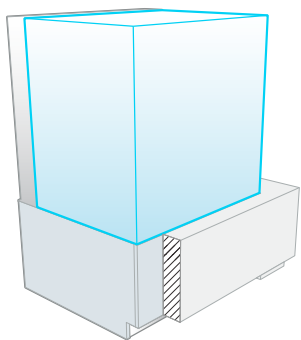
These cases are available in three and four tiers and offered in 3', 4', 5' & 6' sized angled glass self-service models.

The Reveal Self-Service Mobile Case has NSF Type II Breeze-E pull out refrigeration, bluefin coated coils, a condensate pan with a splash guard to help prevent water from spilling on the floor when repositioning, an integrated rail bumper that doubles as a handle and cord wrap for ease of moving and protecting the case, exposed lockable casters, and L.E.D. lighting. It also has many of the same options available as our freestanding Reveal cases.



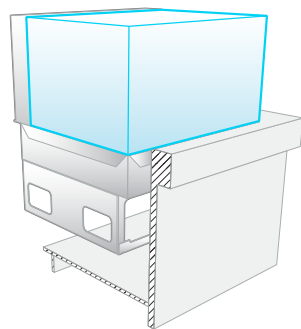
Freestanding — NR models

- Finished base panels
- Mobile option



Push Up to Wall — NR models

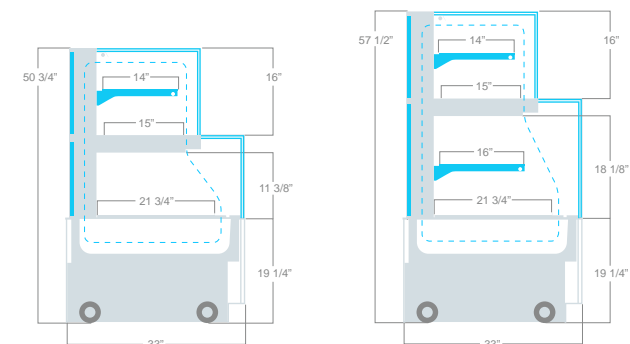
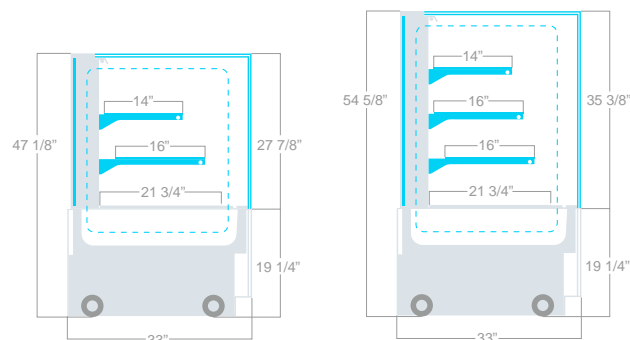
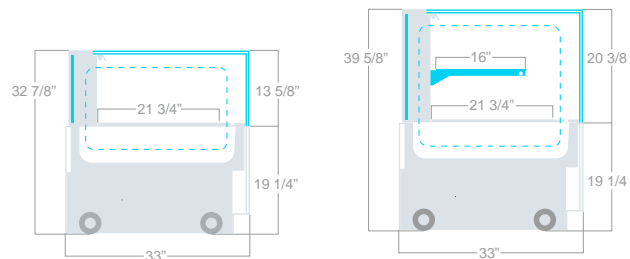
- Finished base panels
- Finished millwork wall by others



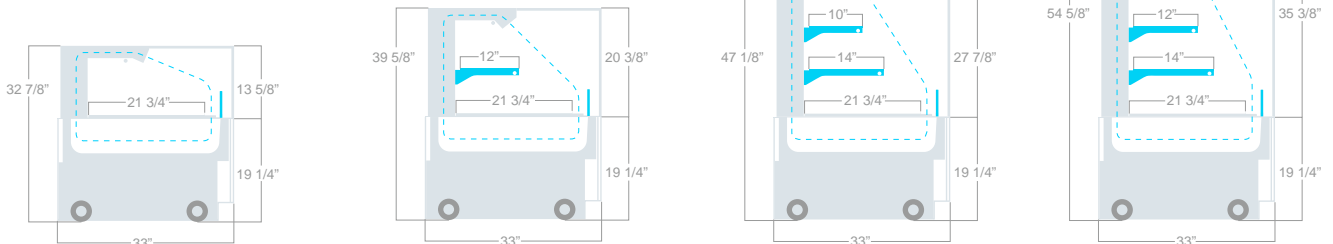
Slide Into Counter — NE models

- Unfinished base
- Finished counter by others

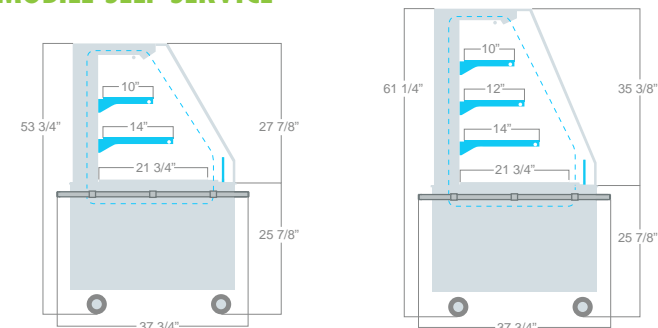
SERVICE — Refrigerated, Non-Refrigerated & Heated Models



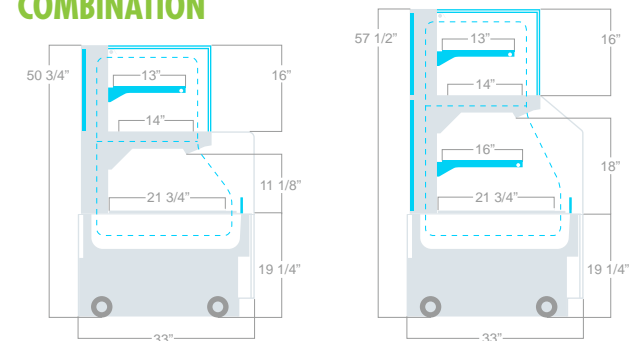
SELF-SERVICE — Refrigerated & Non-Refrigerated Models



MOBILE SELF-SERVICE



COMBINATION



DETAILS THAT MATTER

From design to installation, we’ve paid attention to the details that matter. As you integrate Reveal® models into your space, there are helpful planning tools like the design guide and specification sheets for your reference. These documents share the finer details that need to be considered for outstanding execution of beauty and performance. Be sure to also review the shipping and warranty guidelines for Reveal®. Special consideration has been given to procedures that ensure the safe delivery of these models. Reveal® models may look delicate, but they are tough. We put Reveal® through various impact and shipping tests, and the UV-bonded glass design passed with flying colors.

IMPACT TESTS

- 12” Drop tested
- 20G Force impact
- No rubber cushion failure
- No glass breakage

SHIPPING TESTS

- Traveled 4,036 miles via common carrier
- Transferred through 10 terminals
- No glass breakage or rupture of glass bonds
- ShockWatch did not record ≥ 15G force

INSTALLATION EASE

- NR models ship with panels off. Front panel and side cladding easily attach in place via magnets.
- Side handles provided to position unit.
- Leveling casters allow the unit to easily move into position, quickly level and lock into place.

Reveal® - Examples: NE3613RSV, NR3633DSSV, NR3651RRSV, NE4835HSV, NR4855HSV, NR4847RSSV.MOB

SERIES	STYLE	LENGTH	HEIGHT	TEMP	CABINET	GLASS	SUFFIX
N	E	36"	13"	R (Ref.)	S (Service)	V (Vertical)	
N	R	36"	33"	D (Dry)	SS (Self-Service)	V	
N	R	36"	51"	RR (Ref. Upper/Lower)	S/SS	V	
N	E	48"	35"	H (Hot)	S	V	
N	R	48"	55"	H (Hot)	S	V	
N	R	48"	47"	R	SS	A (Angle)	MOB (Mobile)



888 E. Porter Road
Muskegon, MI 49441

Toll-Free 800-433-9489
Phone 231-798-8888

Fax 231-798-4960
structuralconcepts.com