

A 21st Century Company . . . with 19th Century Craftsmanship

Portable Agitator

A time and labor saver...

boost production with every batch, while you are doing other work!



NEW Ergonomic Design
Washdown IP66 Rated
Quieter Motor



Features:

- Spring-loaded scrapers
- Fixed breaker bar adds to mixing action
- Standard: 120V / 60 HZ / 1 Phase / 28 RPM motor
Optional: 240V / 50 HZ / 1 Phase / 22 RPM motor
- Mounts snugly into kettle handles
- Safety switch permits operation only when level
- Slot for optional digital thermometer unit



Shown on Storage
Dolly with Drip-pan
To collect scraper
drippings

For 20"x11" Savage Kettle
#1801 – 120VAC 60 Hz Electric
#1801-80 – 240VAC 50 Hz Electric

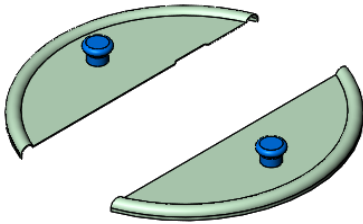
For 20"x 16" Savage Kettle
#1803 – 120VAC 60 Hz Electric
#1803-80 – 240VAC 50 Hz Electric



Add-Ons and Options for Portable Agitator

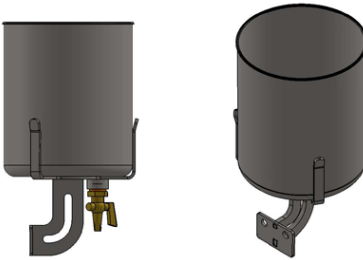


**Standard
Agitator**



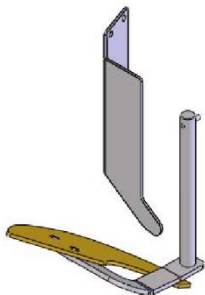
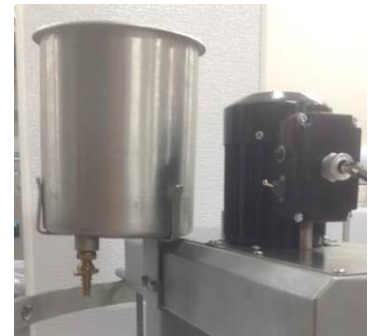
Split Lid for Kettle when Portable Agitator is used. Provides total coverage on both open sides

Part # 0400-02



Cream Can, to hold and dispense cream into batch. Attaches to side of Agitator. Drip valve provides controlled stream

Part # 1801-01-020.



Nut Plow Agitator and Breaker Bar set, to make sugar coated nuts, for proper coating.

**Part # 1801-10-200 To fit 11" deep kettle
1803-10-200 To fit 16" deep kettle**



Gas & Electric Stoves ♦ Copper & Stainless Kettles ♦ FireMixer Cooker-Mixers ♦ Hi-Speed Cookers ♦ Enrobing Lines ♦ Bowl & Kettle Lift/LTruks ♦ Cooling Tables ♦ Chocolate Tempering ♦ Depositing & Transfer Systems