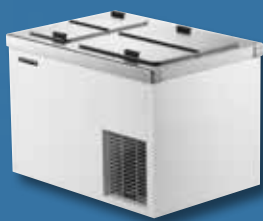


ICE CREAM CABINETS

Storage and display flexibility with a wide range of sizes to fit your needs.



CONVENTIONAL DIPPING CABINETS

- Durable stainless steel tops resist corrosion
- Galvanized steel interior for a durable finish
- Cold wall evaporator with foamed-in-place refrigerant lines wrapped around the outside of the inner tub creates even temperature throughout with no air blowing across ice cream which lowers product quality
- Floor drain with garden hose fitting makes it easy to wash out interior and channel water through hose to drain
- Additional storage space beneath display area provides quick access to additional product



DC-2S



DC-4D



DC-4S



DC-6D



DC-8D



DC-10D



DC-12D

Models	DC-2S	DC-4D	DC-4S	DC-6D	DC-8D	DC-10D	DC-12D
Crated Weight (lbs) (kg)	220 (100)	220 (99)	280 (125)	275 (124)	365 (164)	430 (194)	490 (221)
Can Capacity Display*	3	5	6	8	11	14	18
Can Capacity Storage*	1	2	4	5	8	11	15
Interior Depth (in) (mm)	16-1/2 (419)	25-1/2 (648)	16-1/2 (419)	25-1/2 (648)	25-1/2 (648)	25-1/2 (648)	25-1/2 (648)
Overall Height (in) (mm)	34-1/8 (867)	34-1/8 (867)	34-1/8 (867)	34-1/8 (867)	34-1/8 (867)	34-1/8 (867)	34-1/8 (867)
Overall Width (in) (mm)	31-7/8 (800)	30-5/8 (778)	54 (1372)	43 (1092)	54 (1372)	66-5/8 (1692)	84-5/8 (2149)
Overall Depth (in) (mm)	21-1/8 (537)	30-1/8 (765)	21-1/8 (537)	30-1/8 (765)	30-1/8 (765)	30-1/8 (765)	30-1/8 (765)
Gross Cubage (CuFt) (L)	5.2 (147)	7.6 (215)	11.0 (28)	12.5 (31)	17.3 (43)	22.0 (55)	29.1 (73)
Condensing Unit Size	1/4 HP	1/4 HP	1/4 HP	1/4 HP	1/3 HP	1/3 HP	1/3 HP
Refrigerant	R290	R290	R290	R290	R290	R290	R290
Electrical Characteristics	115/60/1	115/60/1	115/60/1	115/60/1	115/60/1	115/60/1	115/60/1
NEMA Plug Configuration	5-15P	5-15P	5-15P	5-15P	5-15P	5-15P	5-15P
Total Amp Draw	2.1	2.7	3.2	3.2	3.6	5.4	5.9

*Can capacities in 9-1/2" diameter, 3 gallon cans

DIPPING-DISPLAY CABINETS

- Standard, low front glass "L" models and low curved front glass "LCG" models to fit your needs
- Full glass top and LED lighting for maximized product visibility
- Lower back cabinet wall and curved rear edge for improved operator ergonomics and easier interior access
- Electronic controller system improves refrigeration system performance and accessibility during routine servicing
- A wide range of options available including can holders and frost shields.

Standard Models



DD-26



DD-46



DD-66



DD-88

Low Front Glass Models



DD-26L



DD-46L



DD-66L



DD-88L

Low Curved Front Glass Models



DD-26LCG



DD-46LCG



DD-66LCG



DD-88LCG

Model	DD-26/DD-26L/DD-26LCG	DD-46/DD-46L/DD-46LCG	DD-66/DD-66L/DD-66LCG	DD-88/DD-88L/DD-88LCG
Crated Height (in) (mm)	60 (1524)	60 (1524)	60 (1524)	60 (1524)
Can Capacity display **	4	8	12	16
Can Capacity storage **	0	4	8	12
Overall Height (in) (mm)	50 (1270)	50 (1270)	50 (1270)	50 (1270)
Overall Width (in) (mm)	27-1/4 (692)	48-1/4 (1226)	69-1/4 (1759)	90-1/4 (2292)
Overall Depth (in) (mm)	27-1/2 (699)	27-1/2 (699)	27-1/2 (699)	27-1/2 (699)
Condensing Unit Size	3/5 HP	3/5 HP	5/6 HP	5/6 HP
Refrigerant	R290	R290	R290	R290
Electrical Characteristics	115/60/1	115/60/1	115/60/1	115/60/1
Maximum Fuse Size	15	15	15	15
Total Amp Draw	5.9	5.9	7.2	7.2

* Capacities in 9-1/2" diameter, 3 gallon cans.

REFRIGERATED RAIL TOPPING CENTERS

- Same base construction and features as conventional dipping cabinets
- Stainless steel raised rail creates a durable housing for optional topping jars and pumps
- Cold wall evaporator with foamed-in-place refrigerant lines wrapped around the outside of the inner tub creates even temperature throughout with no air blowing across ice cream which lowers product quality



FLR-60



FLR-80



Configure your topping center with optional pump and jar assemblies as well as individual lids, pumps, ladles and jars.

Models	FLR-60	FLR-80
Crated Weight (lbs) (kg)	300 (136)	340 (153)
Overall Height (in) (mm)	38-1/4 (972)	38-1/4 (972)
Overall Width (in) (mm)	43 (1092)	54 (1372)
Overall Depth (in) (mm)	30-1/8 (765)	30-1/8 (765)
Gross Cubage (CuFt) (L)	12.5 (354)	16.8 (475)
Can Capacity Display *	5	6
Can Capacity Storage *	7	11
Condensing Unit Size	1/4 HP	1/3 HP
Refrigerant	R290	R290
Electrical Characteristics	115/60/1	115/60/1
NEMA Plug Configuration	5-15P	5-15P
Total Amp Draw	3.2	3.6

*Can capacities in 9-1/2" diameter, 3 gallon cans

HARDENING AND HOLDING CABINETS

- Powerful refrigeration system for faster pull-down, higher product loads and lower temperatures
- Two energy saving insulated doors per section allow entry into the case without exposing all the product to warmer outside air
- Four heavy-duty, epoxy-coated cantilever shelves per section for maximum storage ability



IHC-27



IHC-48

Models	IHC-27	IHC-48
Crated Weight (lbs) (kg)	590 (268)	840 (382)
Overall Height (in) (mm)	82 (2083)	82 (2083)
Overall Width (in) (mm)	31 (787)	52 (1321)
Overall Depth (in) (mm)	36 (914)	36 (914)
Can Capacity (3 gal. cans)	20	43
No. of Sections	1	2
No. of Shelves	4	8
Condensing Unit Size	5/6 HP (1 unit)	5/6 HP (2 units)
Refrigerant	R290	R290
Electrical Characteristics	115/60/1	115/60/1
NEMA Plug Configuration	6-15P	5-20P
Total Amp Draw	5.5	16.0