





## THE KASON MISSION:

### TO PROTECT YOUR PRODUCT INTEGRITY

Our customers go to great lengths to build top-of-the-line coolers, freezers, foodservice equipment, industrial enclosures and delivery vans. Our goal is to preserve your product integrity by providing the highest quality door hardware and accessories for both original equipment and replacement applications.

End users need to protect products and processes, and lower operating costs. Their first line of defense is stable, airtight enclosures with doors that open with ease and close securely.

Since 1926, Kason has promised and delivered just that. Kason's extensive lines of walk-in and reach-in door hardware satisfy the most demanding requirements. Demonstrate the value of your products with the most innovative, dependable and longlasting hardware in the business.

### RESEARCH AND TESTING

Every Kason product must fulfill our customers' requirements. Before we develop a new product, we research the needs of both our industry and end users. We are never satisfied with the status quo. Our dedicated research and development staff continually search for pioneering design concepts. They insist on engineering integrity, extensive product testing and precise, in-line quality control. That is how we have developed such successful and trustworthy products as SafeGuard® inside releasing safety latches, Pacemaker handles and hinges, stainless steel hinges and latches and truck door handles with removable cylinder locks.

### CREATIVE CONCEPTS

Leading equipment manufacturers turn to Kason when they want a unique look of their own. We will adapt a stock product, design custom hardware or partner with your design engineers to develop a signature appearance just for your products. Building special and customized hardware is routine at Kason.

### QUALITY

Kason production facilities boast state-of-the-art installations, featuring fully automated die-casting, polishing and electroplating, as well as a full range of electronically controlled and robotic machinery. We require the finest raw materials, accurate machine tolerances and the highest level of finishing. Skilled, experienced people maintain the Kason tradition of production excellence. Our unrelenting commitment to superior manufacturing assures you consistently high quality products at the lowest possible cost. Quality assurance is integrated into every step of Kason operations – from engineering research and development through packaging and shipping.

### SERVICE

The lifeline to all your foodservice needs is our efficient and friendly Customer Service Department. A representative can quickly track product availability or the status of your order with our computerized inventory and order control system. Count on dependable global delivery as we serve you from Kason distribution centers in the continental United States and Canada as well as through authorized distributors throughout the world.

### OUR PROMISE

Satisfying your needs is our top priority. That is why Kason supplies you with hardware and accessories that reflect the same quality you demand in your own products. We strive to demonstrate an attitude that makes you want to do business with us. At Kason we offer a tradition of excellence, a philosophy of innovation and the most trusted name in specialty commercial hardware.

## KASON CONTACTS

### USA SALES & DISTRIBUTION CENTERS

**1.800.93KASON (800.935.2766)**

#### KASON INDUSTRIES, INC.

##### GLOBAL HEADQUARTERS

57 Amlajack Boulevard | Newnan, GA 30265-1015, USA  
800.935.3550 | FAX: 770.251.4854  
Info@kasonind.com

#### KASON FOODSERVICE DIVISION

31 Amlajack Boulevard | Newnan, GA 30265-1015, USA  
866.231.2157 | FAX: 770.252.8397  
FoodService@kasonind.com

#### KASON INTERNATIONAL DIVISION

57 Amlajack Boulevard | Newnan, GA 30265-1015, USA  
770.304.3000 | FAX: 770.251.4854  
International@kasonind.com

#### KASON VINYL DIVISION

31 Amlajack Boulevard | Newnan, GA 30265-1015, USA  
678.423.0722 | FAX: 770.252.8397  
Vinyl@kasonind.com

#### KASON CANADA BRANCH

226 Industrial Pkwy North, Unit 2  
Aurora, Ontario, L4G 4C3, Canada  
905.713.6515 | FAX: 905.713.6518  
Canada@kasonind.com

#### KASON CENTRAL BRANCH

8889 Whitney Drive | Lewis Center, OH 43035-7106, USA  
740.549.2100 | FAX: 740.549.0701  
Central@kasonind.com

#### KASON MID-AMERICA BRANCH

1239 Atlantic Avenue | Kansas City, MO 64116-4141, USA  
816.472.7450 | FAX: 816.472.8580  
MidAmerica@kasonind.com

#### KASON WESTERN BRANCH

1500 East Wooley Road, Suite E  
Oxnard, CA 93030-7385, USA  
805.247.1088 | FAX: 805.247.1164  
Western@kasonind.com

## CONTENTS

**NUMERICAL INDEX ..... F4**

**HINGE SELECTOR CHART ..... F5**

### HINGES

Edgemount Adjustable .....	F6 - 12
Edgemount Slimline .....	F6
Edgemount Standard .....	F7
Edgemount Spring .....	F8 - 12
Edgemount Stop .....	F8 - 9
Edgemount Cam Rise .....	F14 - 18
Edgemount Switch Activator .....	F16
Surface Mount .....	F19 - 20, 37 - 38
Pivot .....	F21
Pivot Concealed Spring .....	F22
Pivot Power .....	F22 - 25
Pivot Face Mounted .....	F26 - 27
Oven .....	F10, 13

### LATCHES AND LOCKS

Edgemount Magnetic .....	F28 - 31
Edgemount Magnetic Mechanical .....	F32
Edgemount Mechanical .....	F33 - 35
Edgemount Trigger Action .....	F36 - 39
Edgemount Roller Grip .....	F36
Surface Mount Trigger Action .....	F37 - 38, 40
Surface Mount Explosion Venting .....	F39
Oven .....	F33, 41
Security Lock .....	F40
Lock Keepers .....	F54

### OVEN HARDWARE

Hinge, Hi-Temp .....	F10, 13
Latches Single Action .....	F33
Latches Cam Action .....	F41

### SHELVING HARDWARE

Pilaster .....	F42
Door & Drawer Pulls .....	F43 - 48
Heavy Duty Levers .....	F49
Condensate Evaporators .....	F50
Bulb Guard .....	F51

**LED FIXTURES..... F51-53**

## KASON PRODUCT LINES

HARDWARE & ACCESSORIES FOR

- Walk-In Coolers, Freezers and Test Chambers
- Reach-In Coolers, Freezers and Refrigerators
- Ovens and Heated Holding Cabinets
- Food Prep and Serving Equipment
- Cabinets and Cafeteria Equipment
- Truck Bodies
- Panelock™ Panel Fasteners
- Doorware® Sliding Door Operating Systems
- Electrical Devices and Lighting Fixtures
- Thermaflex® Vinyl Strip Curtains and Swing Doors
- Casters and Caster Legs

# KASON REACH-IN HARDWARE GUIDE

## ITEM NUMBER INDEX

ITEM	PAGE	ITEM	PAGE	ITEM	PAGE
0060 .....	F42	0217 .....	F8	1070A .....	F20
0065 .....	F42	0217S .....	F8	1216 .....	F10 - 11
0065MS .....	F42	0218 .....	F8	1216-31 .....	F10 - 11
0066 .....	F42	0220 .....	F9	1219 .....	F13
0067 .....	F42	0220S .....	F9	1220 .....	F12
0068 .....	F42	0225 .....	F12	1247 .....	F14
0100SL .....	F40	0531 .....	F36	1257 .....	F14
0139 .....	F19	0533D .....	F35	1267 .....	F15
0170 .....	F30	0535 .....	F36	1268 .....	F15
0171 .....	F28 - 29	0538 .....	F35	1269 .....	F16
0172 .....	F28	0660 .....	F50	1367R .....	F17
0173 .....	F33	0812 .....	F41	1467 .....	F18
0174 .....	F33	0877 .....	F49	1510 .....	F26
0174B-14 .....	F33	0878 .....	F49	1511 .....	F26
0177 .....	F34	0879 .....	F49	1512 .....	F27
0381 .....	F44	0879H .....	F49	1513 .....	F27
0382 .....	F43	0893 .....	F49	1521 .....	F21
0544 .....	F31	0902 .....	F48	1522 .....	F21
0572 .....	F44	0905 .....	F46	1530 .....	F26
0573 .....	F43	0906 .....	F47	1531 .....	F26
0574 .....	F44	0907 .....	F47	1532 .....	F27
0576 .....	F44	0910 .....	F47	1533 .....	F27
0578 .....	F43	0911 .....	F47	1556 Series .....	F24 - 25
1061 .....	F19	0912 .....	F48	1805 .....	F51
1061BB .....	F19	0915 .....	F46	1807 .....	F51 - 53
0211 .....	F6	0930 .....	F37	38-08 .....	F53
0212 .....	F6	0930X .....	F39	38-12 .....	F53
0213 .....	F7	0931 .....	F38	5001 .....	F43
0214 .....	F7	0931X .....	F39	7321 .....	F45
0215 .....	F14	1070 .....	F20		



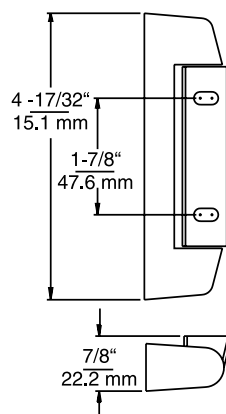
## 211 SLIMLINE HINGE

- Streamlined styling for lightweight doors
- Smooth operation with self-lubricating nylon bearing
- Adjusts easily to compensate for gasket wear
- Interchangeable for right or left-opening door

### SPECIFICATIONS

<b>MATERIAL:</b> High pressure, die-cast zinc	<b>OFFSET:</b> 1-1/4" (28.6 mm)	<b>PACKAGING:</b> 100 per carton
<b>FINISH:</b> Polished chrome plated	<b>MOUNTING:</b> Drilled and countersunk for No. 10 (5.0 mm) screws	<b>WEIGHT:</b> See order information
<b>ADJUSTMENT RANGE:</b> 3/16" (4.8 mm)	<b>LOAD RATING:</b> See Hinge Selector Chart, Group A	

Model No.	Item	Weight/ Carton
10211000001	Strap, Flange & Adjustment Plate	42.7 lb. (19.4 kg)
10211000002	Cover	9.5 lb. (4.3 kg)
10211000005	Chrome Cover	9.5 lb. (4.3 kg)



ITEM # 211



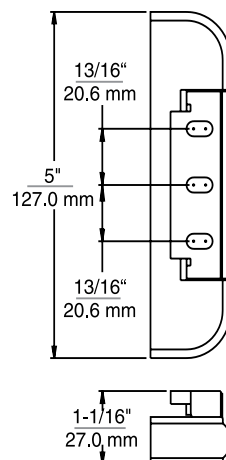
## 212 ADJUSTABLE HINGE

- Positive adjustment compensates for gasket wear
- Interchangeable for right or left-opening door

### SPECIFICATIONS

<b>MATERIAL:</b> High pressure, die-cast zinc flange; brass cover, zinc plated steel strap	<b>ADJUSTMENT RANGE:</b> 3/16" (4.8 mm)	<b>PACKAGING:</b> 20 each
<b>FINISH:</b> Highly polished chrome	<b>MOUNTING:</b> Drilled and countersunk for No. 10 (5.0 mm) screws	<b>WEIGHT:</b> Approx. 11 lb. (5.0 kg) per carton
<b>OFFSETS:</b> See ordering information	<b>LOAD RATING:</b> See Hinge Selector Chart, Group A	

Model No.	Item	Offset
10212000004	Hinge	7/8" (22.2mm)
10212000008	Hinge	1-1/8" (28.6mm)
10212000012	Hinge	1-3/8" (34.9mm)



ITEM # 212



®  
U.S. Trademark  
2,374,415

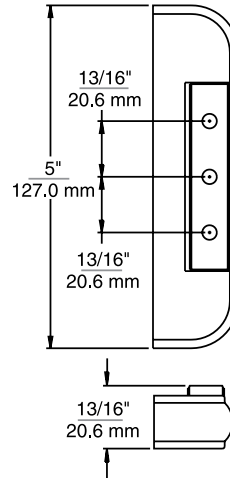
## 213 STANDARD HINGE

- Smooth operation, economy and strength
- Narrow width saves space, mounts close to door
- Interchangeable for right or left-opening door

### SPECIFICATIONS

<b>MATERIAL:</b> High pressure, die-cast zinc flange; brass cover, zinc plated steel strap	<b>OFFSETS:</b> See ordering information	<b>PACKAGING:</b> 20 each
<b>FINISH:</b> Polished chrome	<b>MOUNTING:</b> Drilled and countersunk for No. 10 (5.0 mm) screws	<b>WEIGHT:</b> Approx. 8 lb. (3.6 kg) per carton
	<b>LOAD RATING:</b> See Hinge Selector Chart, Group A	

Model No.	Item	Offset
10213000004	Hinge	7/8" (22.2mm)
10213000008	Hinge	1-1/8" (28.6mm)
10213000012	Hinge	1-3/8" (34.9mm)



ITEM # 213



®  
U.S. Trademark  
2,374,415

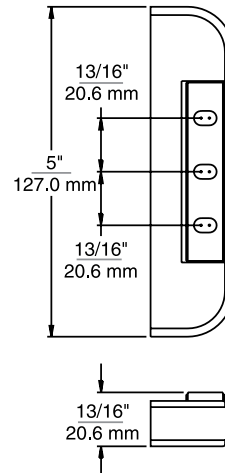
## 214 ADJUSTABLE HINGE

- Mounts close to refrigerator door. Requires minimum jamb width
- Adjustment range is 1/8" (3.2 mm)
- Easy, positive adjustment by loosening mounting screw and resetting serrated adjustment plate
- Interchangeable for right or left-opening door

### SPECIFICATIONS

<b>MATERIAL:</b> High pressure, die-cast zinc flange and adjustment plate, brass cover, zinc plated steel strap	<b>ADJUSTMENT RANGE:</b> 1/8" (3.2 mm)	<b>PACKAGING:</b> 20 each
<b>FINISH:</b> Polished chrome	<b>MOUNTING:</b> Drilled and countersunk for No. 10 (5.0 mm) screws	<b>WEIGHT:</b> Approx. 11 lb. (5.0 kg) per carton
<b>OFFSETS:</b> See ordering information	<b>LOAD RATING:</b> See Hinge Selector Chart, Group A	

Model No.	Item	Offset
10214000004	Hinge	7/8" (22.2mm)
10214000008	Hinge	1-1/8" (28.6mm)
10214000012	Hinge	1-3/8" (34.9mm)



ITEM # 214



®  
U.S. Trademark  
2,374,415

# KASON EDGEMOUNT HINGES

## 217 ADJUSTABLE HINGE

- Larger, heavy duty hinge
- Choice of three offsets
- Serrated plate easily adjusts to compensate for gasket compression
- Interchangeable for right or left-opening door

## 217S STOP HINGE

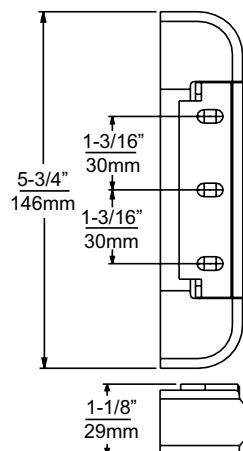
Same as No 217, except automatically stops door when opened 120 degrees. Minimum quantity orders may apply.

## SPECIFICATIONS

<b>MATERIAL:</b> High pressure, die-cast zinc flange and adjustment plate; brass cover, zinc plated steel strap	<b>OFFSETS:</b> See ordering information	<b>LOAD RATING:</b> See Hinge Selector Chart, Group B
<b>FINISH:</b> Polished chrome	<b>ADJUSTMENT RANGE:</b> 3/16" (4.8 mm)	<b>PACKAGING:</b> 24 each
	<b>MOUNTING:</b> Drilled and countersunk for No. 10 (5.0 mm) screws	<b>WEIGHT:</b> Approx. 18 lb. (8.2 kg) per carton

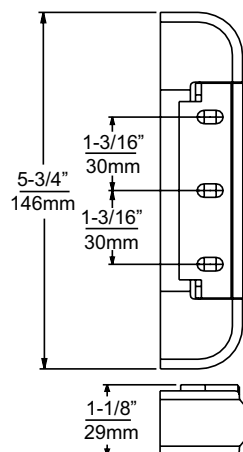
Model No.	Item	Offset
10217000004	Hinge	7/8" (22.2mm)
10217000008	Hinge	1-1/8" (28.6mm)
10217000012	Hinge	1-3/8" (34.9mm)
10217S00008	Hinge	1-1/8" (28.6mm)
10217S00012	Hinge	1-3/8" (34.9mm)

ITEM # 217



®  
U.S. Trademark  
2,437,925

ITEM # 218



®  
U.S. Trademark  
2,437,925

## 218 ADJUSTABLE SPRING HINGE

- Removable spring cartridge
- Powerful spring tension adjusts easily to provide needed closing force
- Ideal for self closing refrigerators
- Adjusts with serrated adjustment plate to compensate or gasket compression
- Interchangeable for right or left open door

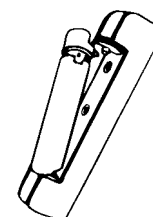
## SPECIFICATIONS

<b>MATERIAL:</b> High pressure, die-cast zinc flange, adjustment plate and spring cartridge; zinc plated steel strap	<b>OFFSETS:</b> See ordering information	<b>LOAD RATING:</b> See Hinge Selector Chart, Group B
<b>FINISH:</b> Polished chrome	<b>ADJUSTMENT RANGE:</b> 3/16" (4.8 mm)	<b>PACKAGING:</b> 24 each.
	<b>MOUNTING:</b> Drilled and countersunk for No. 10 (5.0 mm) screws	<b>WEIGHT:</b> Approx. 33 lb. (15.0 kg) per carton

Model No.	Item	Offset
10218000004	Hinge	7/8" (22.2mm)
10218000008	Hinge	1-1/8" (28.6mm)
10218000012	Hinge	1-3/8" (34.9mm)
10218000028	Spring Cartridge	

## TO INSTALL SPRING CARTRIDGE

Depress bushing and slip the spring-loaded cartridge in place. Perform this simple operation in the field in minutes.





## 220 SPRING HINGE

- Heavy-duty, long wearing design
- Fully round pivot pin assures trouble-free operation and long life
- Spring tension adjusts quickly on site
- Adjustable to compensate for gasket compression
- Interchangeable for right or left-opening door

## 220S STOP HINGE

- Same as No. 220 except automatically stops door when opened 120°
- Also available with 90° stop
- Minimum order quantity may apply

## SPECIFICATIONS

**MATERIAL:**  
High pressure, die-cast zinc flange and adjustment plate, chrome-plated brass cover, zinc plated steel strap

**FINISH:**  
Polished chrome

**OFFSETS:**  
See ordering information

**ADJUSTMENT RANGE:**  
3/16" (4.8 mm)

**MOUNTING:**  
Drilled and countersunk for No. 10 (5.0 mm) screws

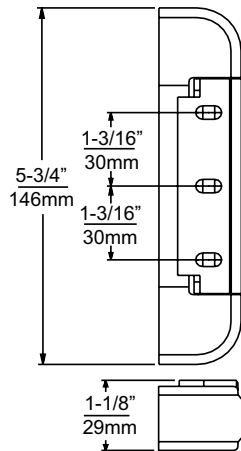
**LOAD RATING:**  
See Hinge Selector Chart, Group B

**PACKAGING:**  
24 each

**WEIGHT:**  
Approx. 18 lb. (8.2 kg) per carton

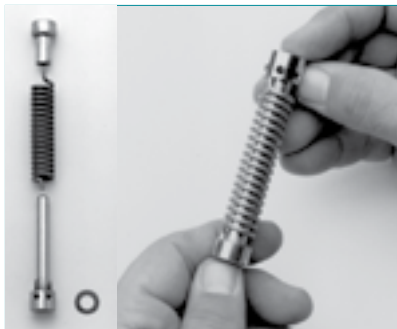
Model No.	Item	Offset
10220000008	Hinge	1-1/8" (28.6mm)
10220000012	Hinge	1-3/8" (34.9mm)
10220S00013	90° Stop Hinge	1-3/8" (34.9mm)
10220S00012	120° Stop Hinge	1-3/8" (34.9mm)
10220000027	Spring Cartridge Kit	

ITEM # 220



®  
U.S. Trademark  
2,437,925

## 220 SPRING CARTRIDGE KIT INSTALLATION



1. Assemble spring cartridge as shown.



2. Place thrust washer and bushing over hexagon pin on mounted hinge. Insert adjustment pin into adjustment bushing assembly. Grasping adjustment pin, compress spring and place adjustment bushing assembly over round pin.



3. Adjust tension; then insert stop pin in hole of adjustment bushing assembly.



U.S. Patent 7,055,214

**ITEM # 1216**



## 1216 DOUBLE ADJUSTABLE HINGE

- Dual serrated adjustment plates permit for quick and easy adjustment to compensate for door sag and gasket compression
- Interchangeable for right or left hand applications
- Accepts power spring conversion kits
- Zinc die cast construction
- Options for stainless steel internal parts for outside application
- Well styled ideal hinge for under cabinet and refrigerator use
- Non-rise action keeps door at constant level throughout pivot range.
- Serrated micro adjustment plate allows door to cabinet correction of 1/32" for exact gasket seal and 5/32 door to opening adjustment for optimum door alignment.
- Add fully adjustable spring assist to assure automatic hands free door closure.
- Snap on polished stainless steel cover hides mounting hardware and provides required seal against infestation.

### SPECIFICATIONS

**MATERIAL:**  
High pressure, die-cast zinc flange and adjustment plate, steel strap, stainless steel cover, aluminum flange adjustment plate

Offset flange plug: Propylene  
Pins: Plated steel  
Spring: Stainless steel  
Spring bushings: Brass

**FINISH:**  
Polished chrome

**OFFSETS:**  
See ordering information

**ADJUSTMENT RANGE:**  
3/16" (4.8 mm)

**MOUNTING:**  
Drilled and countersunk for No. 10 (5.5 mm) screws

**PACKAGING:**  
24 each

**LOAD RATING:**  
See Hinge Selector Chart, Group A

**WEIGHT:**  
Approx. 22 lb. (10.0 kg) per carton

## 1216-31 HI-TEMP BRASS OVEN HINGE

- Non-rise hinge for right or left-hand use
- Designed for ovens, steam cabinets and other heated appliances.
- Offsets adjust easily; loosen mounting screws and reset serrated adjustment plate

### SPECIFICATIONS

**MATERIAL:**  
Solid forged brass, Teflon bushing

**FINISH:**  
Polished chrome

**MOUNTING:**  
Drilled and countersunk for No. 10 (5mm) screws

**OFFSET:**  
1-1/8" (28.6mm)

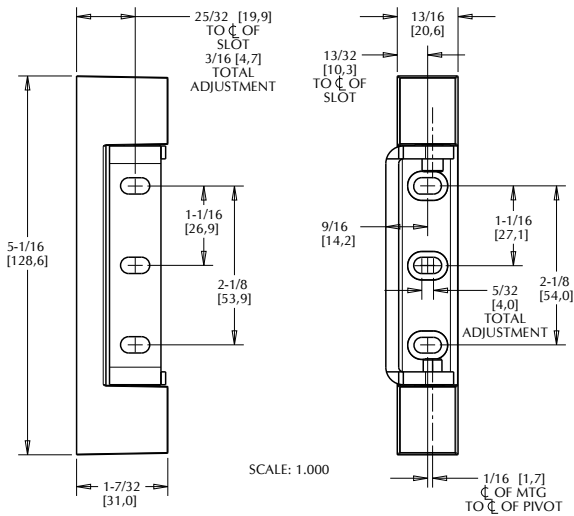
**PACKAGING:**  
24 each

**WEIGHT:**  
Approx. 31 lb. (14kg) per carton

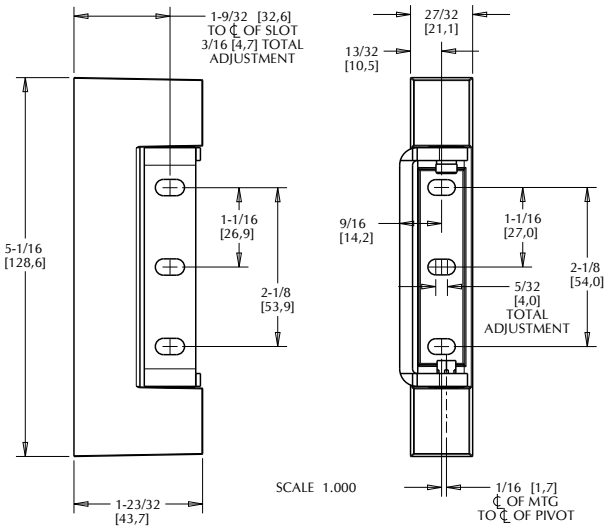
## OPTIONAL 1216-27 SPRING CARTRIDGE KIT

- Easily converts both the 1216-12 and -14 double adjustable hinge and the 1216-31 hi-temp hinge to a spring hinge with the addition of this kit.





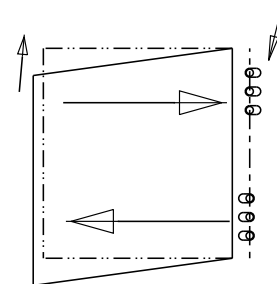
**1216-12**



**1216-14**

Model No.	Item	Offset
11216000012	Dual Adjustable Hinge	1-1/8" (28.6mm)
11216000014	Dual Adjustable Hinge	1-5/8" (41.2 mm)
11216000031	Solid Brass Hi-Temp Hinge	1-1/8" (28.6 mm)
11216000027	Spring Cartridge Kit	1-1/8" (28.6mm)
11216SS0001*	Adjustable Hinge with Stainless Strap	1-1/8" (28.6 mm)
11216SS00027*	Spring Cartridge Kit with Stainless Pins	1-1/8" (28.6mm)
91216003610095	Cover	

\*Stainless steel options are special order only



To level a sagging door, adjust the lower flange opening and upper flange away from opening.

## 1216-27 SPRING CARTRIDGE KIT

No. 1216 hinge easily converts to spring hinge for self-closing applications



1. Assemble spring cartridge as shown.



2. Slip bushing over hexagon pin on mounted hinge; then insert adjustment pin into adjustment bushing assembly.



3. Grasping adjustment pin, compress spring and place adjustment bushing assembly over round pin.



4. Adjust tension; then insert stop pin in hole of adjustment bushing assembly.

ITEM # 1220



## 1220 ADJUSTABLE HINGE

- Larger non-rise hinge for use on heavier reach-in doors
- Offsets adjust easily; just loosen mounting screws and reset serrated adjustment plate
- Round bearing pins for longer life than competitive models.
- Use for right or left-opening door
- Simple conversion to spring hinge for self-closing applications
- Interchangeable for right or left opening door

## SPECIFICATIONS

**MATERIAL:**  
High pressure, die-cast zinc flange and adjustment plate, stainless steel cover, zinc plated steel strap

**FINISH:**  
Polished chrome

**OFFSETS:**  
See ordering information

**ADJUSTMENT RANGE:**  
3/16" (4.8 mm)

**MOUNTING:**  
Drilled and countersunk for No. 10 (5.0 mm) screws

**LOAD RATING:**  
See Hinge Selector Chart, Group B

**PACKAGING:**  
24 each

**WEIGHT:**  
Approx. 18 lb. (8.2 kg) per carton.

Model No.	Item	Offset
11220000008	Hinge	1-1/8" (28.6mm)
11220000012	Hinge	1-3/8" (34.9mm)
10220000027	Spring Cartridge Kit	



© 2020 Kason Industries, Inc.

0220 LIT 001

## SPRING CARTRIDGE KIT INSTALLATION

No. 1220 hinge easily converts to spring hinge for self-closing applications.



1. Assemble spring cartridge as shown.



2. Slip bushing over hexagon pin on mounted hinge; then insert adjustment pin into adjustment bushing assembly.



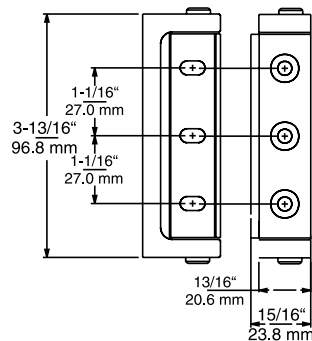
3. Grasping adjustment pin, compress spring and place adjustment bushing assembly over round pin.



4. Adjust tension; then insert stop pin in hole of adjustment bushing assembly.



ITEM # **225**



## 225 HI-TEMP RESISTANT HINGE

- Ideal for high temperature applications up to 450°F (232°C).
- Anodized finish retards discoloration
- Adjustable to compensate for gasket compression
- Interchangeable with Kason No. 1216 edgemount hinge
- Interchangeable for right or left-opening door

### SPECIFICATIONS

**MATERIAL:**  
Extruded aluminum flange, die-cast zinc adjustment plate, zinc-plated steel strap, stainless steel cover and pins

**FINISH:**  
Anodized aluminum flange, chrome cover

**OFFSET:**  
See ordering information

**ADJUSTMENT RANGE:**  
3/16" (4.8 mm)

**MOUNTING:**  
Drilled and countersunk for No. 12 (5.5 mm) screws

**LOAD RATING:**  
See Hinge Selector Chart, Group A

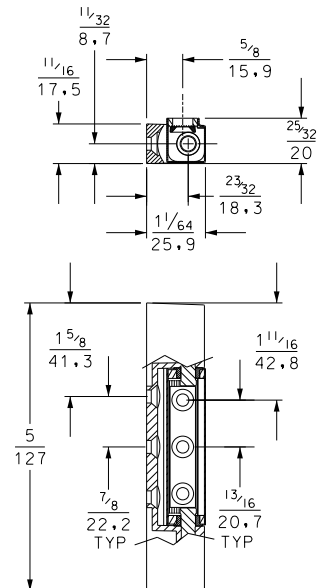
**PACKAGING:**  
36 each

**WEIGHT:**  
Approx. 14 lb. (6.3 kg) per carton

Model No.	Item	Offset
10225000001	Hinge	1-1/8" (28.6mm)



ITEM # **1219**



## 1219 ADJUSTABLE HINGE

- Mounts close to refrigerator door. Requires minimum jamb width
- Offset adjusts 1/8" (3.2 mm) in-and-out to compensate for gasket compression as needed
- Easy to adjust by loosening mounting screw and resetting serrated adjustment plate
- Interchangeable for right or left-opening door

### SPECIFICATIONS

**MATERIAL:**  
High pressure, die-cast zinc flange and adjustment plate, brass cover, zinc plated steel strap, nylon bushing, stainless steel cover

**FINISH:**  
Polished chrome

**ADJUSTMENT RANGE:**  
1/8" (3.2mm)

**MOUNTING:**  
Drilled and countersunk for No. 10 (5.0mm) flat head screws

**PACKAGING:**  
50 each

**WEIGHT:**  
Approx. 27 lb. (12.3kg) per carton

**LOAD RATING:**  
See Kason Hinge Selector, Group A

Model No.	Item	Offset
11219000004	Edgemount Hinge	7/8" (2202mm)

# KASON CAM-RISE HINGES

## 215 CAM RISE HINGE

- Built-in dwell holds door open at 93°
- Positive adjustment with 3/16" (4.8 mm) range
- Lift-off strap
- Cam repositions for use on right or left-opening door

### SPECIFICATIONS

**MATERIAL:**  
High pressure, die-cast zinc flange, strap and adjustment plate; brass cover; self-lubricating nylon reversible cam; Oilite bearing; stainless steel pin

**MOUNTING:**  
Drilled and countersunk for No. 10 (5.0 mm) screws

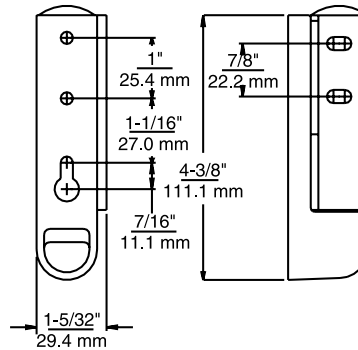
**LOAD RATING:**  
See Hinge Selector Chart, Group A

**FINISH:**  
Polished chrome

**PACKAGING:**  
32 each

**ADJUSTMENT RANGE:**  
3/16" (4.8 mm)

**WEIGHT:**  
Approx. 25.6 lb. (11.6 kg) per carton



**ITEM # 215**



®  
U.S. Trademark  
2,349,251



## 1247 CAM RISE HINGE

- Self-closing hinge has built-in dwell that holds door open at 93°.
- Lift-off feature allows door to be removed with hinges in place.
- Adjusts for gasket compression.
- Reversible for right or left-opening door.

## 1257 SPRING HINGE

Same specifications as 1247 with spring feature.

### SPECIFICATIONS

**MATERIAL:**  
High pressure, die-cast zinc flange, strap and adjustment plate; stainless steel cover; steel pin.

**MOUNTING:**  
Flange drilled and countersunk for No. 12 (5.5 mm) flat head screws; strap drilled for No. 12 (5.5 mm) round head screws.

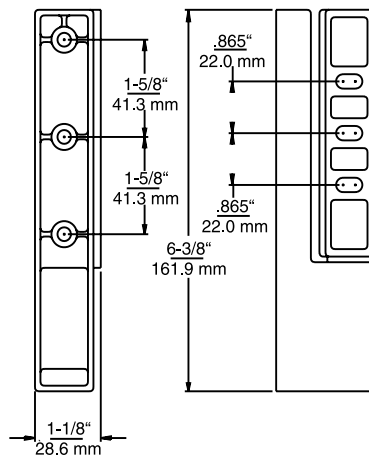
**LOAD RATING:**  
See Hinge Selector Chart, Group A, see associated footnote.

**FINISH:**  
Polished chrome.

**PACKAGING:**  
36 each.

**OFFSETS:**  
See ordering information.

**WEIGHT:**  
Approx. 45 lb. (20.4 kg) per carton.

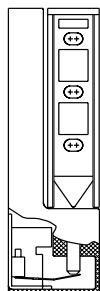
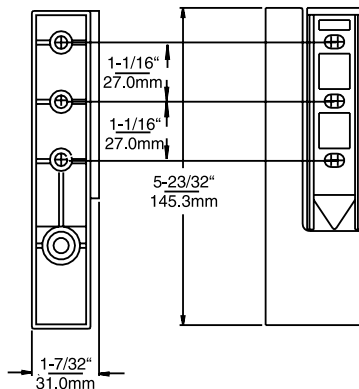


**ITEM # 1247**



Model No.	Item	Offset
11247000002	Hinge	1-1/4" to 1-5/8" (31.8 - 41.3mm)
11247000004	Hinge	1-3/4" to 2-3/8" (44.5 - 60.3mm)
11257000004	Spring Hinge	1-1/4" to 1-5/8" (31.8 - 41.3mm)
11257000008	Spring Hinge	1-3/4" to 2-3/8" (44.5 - 60.3mm)

## ITEM # 1267



**1267 with MICRO SWITCH**

## 1267 CAM RISE HINGE

- Beautifully designed and proportioned basic hinge is engineered for heavy use and long life
- Self-lubricating Zytel cam allows door to close automatically or to stay open at 98° or 120° depending on model
- Reversible cam for use on right or left-opening door
- Lift-off feature allows door to be removed with hinges in place
- Adjustable to compensate for gasket compression
- Spring-assisted and switch-activated versions available

## SPECIFICATIONS

**MATERIAL:**  
High pressure, die-cast zinc flange, strap and adjustment plate; brass cover

**FINISH:**  
Polished chrome

**OFFSET:**  
3/16" (4.8 mm)

**ADJUSTMENT RANGE:**  
1-5/8" (41.3 mm)  
to 2-3/8" (60.3 mm)

**MOUNTING:**  
Flange and strap drilled and countersunk for No. 12 (5.5 mm) flat head screws

**LOAD RATING:**  
See Hinge Selector Chart, Group A and associated footnote

**PACKAGING:**  
20 per carton

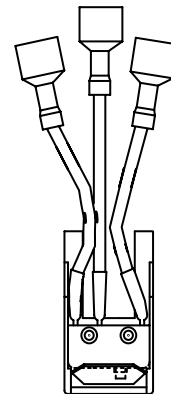
**WEIGHT:**  
Approx. 38.5 lb. (17.5 kg) per carton

## 1268 SPRING ASSISTED HINGE

Spring-assisted version of No. 1267 to use where door removal is not required.

## 1367S MICRO SWITCH

- Compact switch for automatic control of light, fan or other electrical device
- Fits within base of 1267 hinge
- Leads attached for easy installation
- Order hinge and switch separately
- Consult factory for UL Recognized Component certifications



**1367S**

## SPECIFICATIONS

Single pole double throw 5 amp at 250VAC, comes with three leads (N/O and N/C) or two leads (N/C)

Model No.	Item	Qty/Carton	Wgt/Carton
11267000014	Hinge 98° Detent	20	55 lbs. (25 kg)
11267WT0014	Hinge 120° Detent	20	29 lbs. (13.2 kg)
11268WT0014	Spring 120° Detent	20	18 lbs. (8.2 kg)
11367S00010	Switch 3 Lead N/C and N/O	100	6 lbs. (2.7 kg)
11367S00011	Switch 2 Lead N/C	100	55 lbs. (25 kg)



## 1269 SWITCH-ACTIVATOR HINGE

- Time-tested cam-rise action combined with automatic control of light, fan or other electrical device
- Protected, internal switch is operated directly by rise and fall of the hinge strap, assuring foolproof activation
- Self-closing hinge has built-in dwell that holds door open past 90°
- Lift-off feature allows door to be removed with hinges in place
- Simple cam rotation permits use on right or left-opening door
- Adjustable to compensate for gasket compression
- Consult factory for UL Recognized Component certifications

### HINGE SPECIFICATIONS

<b>MATERIAL:</b> High pressure, die-cast zinc flange, strap and adjustment plate; brass cover, nylon cam	<b>ADJUSTMENT RANGE:</b> 3/16" (4.8 mm)	<b>LOAD RATING:</b> See Hinge Selector Chart, Group A and associated footnote
<b>FINISH:</b> Polished chrome	<b>MOUNTING:</b> Flange and strap drilled and countersunk for No. 12 (5.5 mm) flat head screws.	<b>PACKAGING:</b> See order information for component packaging
<b>OPTION:</b> Hinge with 120° dwell		

### SWITCH SPECIFICATIONS

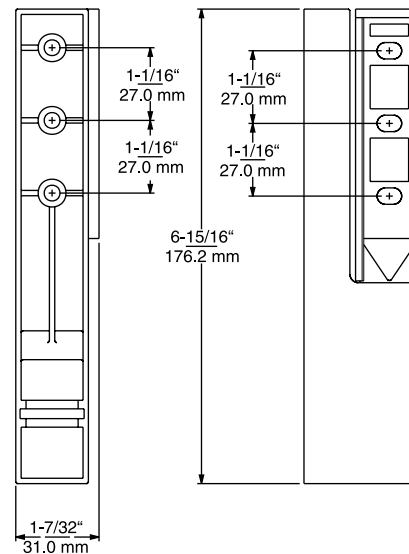
Single pole 5 amp at 125VAC contacts on opening. Switch kit includes stainless steel mounting plate and insulating barrier.

Model No.	Item	Qty/Carton
11267000002	Cam for 1269	100
11267000003	Adjustment Plate for 1269	200
11267000004	Cover for 1269	100
11267000005	Strap for 1269	50
11269000001	Flange	50
11269000007	Single Pole Switch	40
11269000014	Hinge 1-5/8 Chr.	40

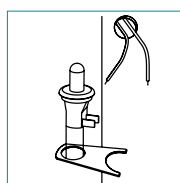


ITEM # 1269

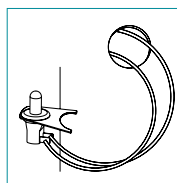
SWITCH



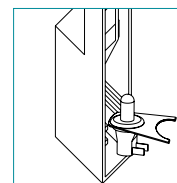
## EASY INSTALLATION



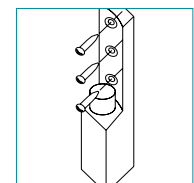
1. Snap switch into mounting plate.



2. Attach leads from electrical equipment to switch terminals.



3. Slip insulating barrier and switch into flange.



4. Mount flange onto cabinet.



## 1367R UNIVERSAL REPLACEMENT CAM RISE LIFT-OFF HINGE

- Fully-assembled, standard mounting hinge.
- Self-lubricating Zytel cam allows door to close automatically or to stay open at 120°
- Strap adjustment compensates for gasket compression
- Cam reverses for right or left-hand opening door
- Lift-off feature permits door removal with hinges in place for cleaning or service
- Accepts optional micro switch for automatic control of electrical device

### SPECIFICATIONS

<b>MATERIAL:</b> High pressure, die-cast zinc flange, strap and adjustment plate; brass cover	<b>ADJUSTMENT RANGE:</b> 1-5/8" (41.3 mm) to 2-3/8" (60.3 mm)	<b>LOAD RATING:</b> See Hinge Selector Chart, Group A and associated footnote
<b>FINISH:</b> Polished chrome	<b>MOUNTING:</b> Flange and strap drilled and countersunk for No. 12 (5.5 mm) flat head screws	<b>PACKAGING:</b> 20 per carton
<b>OFFSET:</b> 3/16" (4.8 mm)		<b>WEIGHT:</b> Approx. 38.5 lb. (17.5 kg) per carton

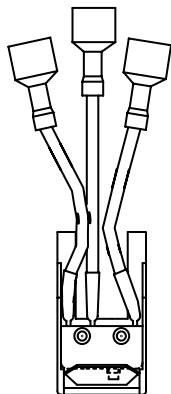
### OPTIONAL MICRO SWITCH

- Compact switch for automatic control of light, fan or other electrical device
- Fits within base of hinge
- Leads attached for easy installation
- Order hinge and switch separately
- Consult factory for UL Recognized Component certifications

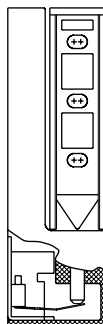
### SPECIFICATIONS

Single pole double throw 5 amp at 250VAC, comes with three leads (N/O and N/C) or two leads (N/C)

Model No.	Item	Qty/Carton	Wgt/Carton
11367R00016	Lift-Off Hinge	20	55 lbs. (25 kg)
11367S00010	Switch 3 Lead N/C and N/O	100	29 lbs. (13.2 kg)
11367S00011	Switch 2 Lead N/C	100	18 lbs. (8.2 kg)

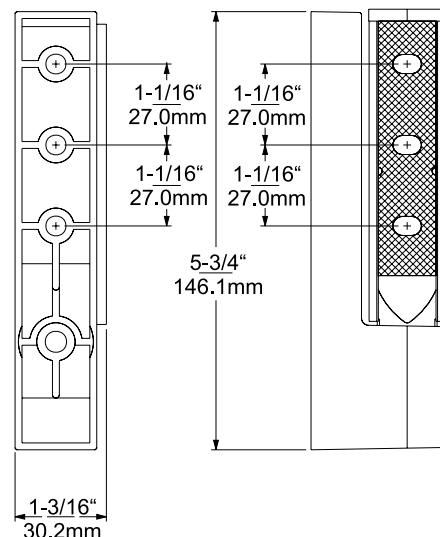


**1367S MICRO SWITCH**



**1367R WITH 1367S MICRO SWITCH**

ITEM # 1367R



# KASON CAM-RISE HINGES

U.S. Patent No. 6,374,458



ITEM # 1467



## 1467 DOUBLE ADJUSTABLE CAM-RISE HINGE

- Sag-compensating hinge assures correct door alignment the first time, all the time.
- Easy flange adjustment positively locks into place after aligning door, so hinge holds firmly in place.
- Eliminates floating tapping plates; shims and twisted hinges.
- Traditional strap adjustment compensates for gasket compression.
- Interchanges in whole or in part with other suppliers' edgemount, cam-rise hinges.
- Reversible for right or left-hand door mounting
- For fan and light control, hinge accepts easy-to-install low maintenance internal micro switch or a traditional plunger for supplied switch.

## SPECIFICATIONS

**MATERIAL:**  
High pressure, die-cast zinc flange, strap and adjustment plate; brass cover

**FINISH:**  
Polished chrome

**OFFSET:**  
3/16" (4.8 mm)

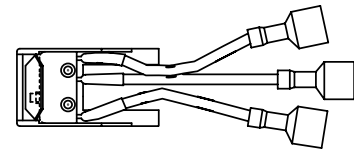
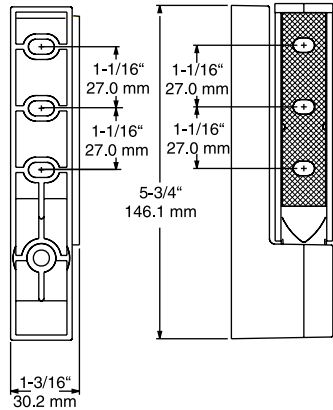
**ADJUSTMENT RANGE:**  
1-5/8" (41.3 mm) to 2-3/8" (60.3 mm)

**MOUNTING:**  
Flange and strap drilled and countersunk for No. 12 (5.5 mm) flat head screws

**LOAD RATING:**  
See Hinge Selector Chart, Group A and associated footnote

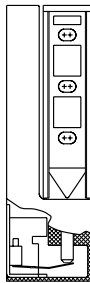
**PACKAGING:**  
20 per carton

**WEIGHT:**  
Approx. 38.5 lb. (17.5 kg) per carton



**1367S MICRO SWITCH**

**1467 WITH 1367S MICRO SWITCH**



## OPTIONAL MICRO SWITCH

- Compact switch for automatic control of light, fan or other electrical device
- Fits within base of hinge
- Leads attached for easy installation
- Order hinge and switch separately
- Consult factory for UL Recognized Component certifications

## SPECIFICATIONS

**Single pole double throw 5 amp at 250VAC, comes with three leads (N/O and N/C) or two leads (N/C)**

Ask your Kason representative to show you how this exceptional new hinge can simplify door installation and assure your customers sag-free doors.

Model No.	Description	Qty/Carton	Wgt/Carton
11467R00014	Complete Hinge	20	55 lbs. (25 kg)
11467R00001	Flange	50	29 lbs. (13.2 kg)
11467000002	Strap	50	18 lbs. (8.2 kg)
11467000003	Adjustable Plate	100	6 lbs. (2.7 kg)
11467000004	Cover	100	10 lbs. (4.5 kg)
11467000005	Cam	100	5 lbs. (2.3 kg)
11467000006	Flange Plug, Black	100	4 lb. (1.8kg)
11467000006G	Flange Plug, Gray	100	
11367S00010	Switch, 3 Lead N/C and N/O	100	4 lb. (1.8kg)
11367S00011	Switch, 2 Lead N/C	100	4 lb. (1.8kg)
11467000007	Activator Pin For Side Switch (Switch Supplied By Customer)	1000	

## 139 NARROW FLANGE HINGE

- Classic styling for small service doors
- Rugged design withstands hard use
- Reversible for right or left hand by removing pin

### SPECIFICATIONS

<b>MATERIAL:</b> High pressure, die-cast zinc; stainless steel pin	<b>MOUNTING:</b> Drilled and countersunk for No. 8 (4.0 mm) screws	<b>PACKAGING:</b> 24 each
<b>FINISH:</b> Polished chrome	<b>LOAD RATING:</b> See Hinge Selector Chart, Group A	<b>WEIGHT:</b> Approx. 12 lb. (5.4 kg) per carton
<b>OFFSETS:</b> See ordering information		

Model No.	Item	Offset
10139000004	Hinge	Flush (0.00 mm)
10139000032	Hinge	7/8" (22.2 mm)
10139000040	Hinge	1-1/8" (28.6 mm)

## 1061 STEEL HINGE

- Equipped with nylon thrust washers
- Reversible for right or left hand by removing pin and bearings

## 1061BB BALL BEARING HINGE

Features all metal ball bearing washers for high temperature applications. Other specifications same as 1061.

### SPECIFICATIONS

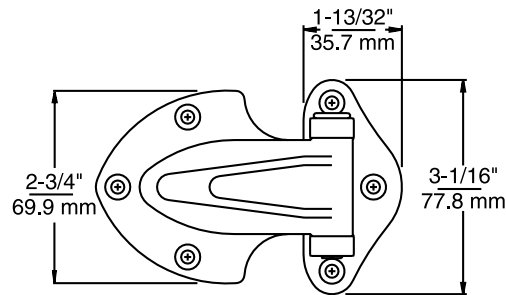
<b>MATERIAL:</b> Steel	<b>MOUNTING:</b> Drilled and countersunk for No. 10 (5.0 mm) screws	<b>PACKAGING:</b> 25 per carton
<b>FINISH:</b> Kasonized	<b>LOAD RATING:</b> See Hinge Selector Chart, Group C	<b>WEIGHT:</b> Approx. 34 lb. (15.5 kg) per carton
<b>OFFSETS:</b> See ordering information		

Model No.	Item	Offset
11061000004	Steel Hinge	Flush (0.00 mm)
11061000012	Steel Hinge, R.H.	Flush (0.00 mm)
11061000013	Steel Hinge, L.H.	Flush (0.00 mm)
11061000036	Steel Hinge	1-1/8" (28.6 mm)
11061BB0004	Ball Bearing Hinge	Flush (0.00 mm)
11061BB0036	Ball Bearing Hinge	1-1/8" (28.6 mm)

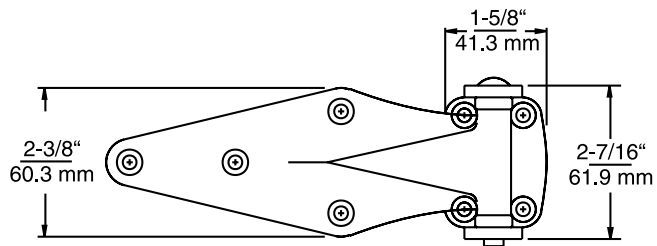
ITEM # 139

NSF

COMPONENT



ITEM # 1061



# KASON SURFACE MOUNT HINGES

## NARROW FLANGE HINGES

- Workhorse hinges in two sizes
- High strength with stainless steel through pin
- Supplied as right hand. Reversible by removing pin and washer and reassembling on opposite sides of strap

### SPECIFICATIONS

MATERIAL:	1070	1071
High pressure die-cast zinc, stainless steel pin	<b>MOUNTING:</b> Drilled and countersunk for No. 8 (4.0 mm) screws	<b>MOUNTING:</b> Drilled and countersunk for No. 10 (5.0 mm) screws
<b>FINISH:</b> Polished chrome	<b>LOAD RATING:</b> See Hinge Selector Chart, Group A	<b>LOAD RATING:</b> See Hinge Selector Chart, Group B
<b>OFFSETS:</b> See ordering information	<b>PACKAGING:</b> 24 per carton	<b>PACKAGING:</b> 24 per carton
	<b>WEIGHT:</b> Approx. 12 lb. (5.5 kg) per carton	<b>WEIGHT:</b> Approx. 21 lb. (9.5 kg) per carton

Model No.	Item	Offset
11070000004	Hinge, R.H.	Flush (0.00 mm)
11070000007	Hinge, L.H.	Flush (0.00 mm)
11070000032	Hinge	7/8" (22.2mm)
11070000040	Hinge	1-1/8" (28.6mm)
11071000032	Hinge	7/8" (22.2mm)
11071000040	Hinge	1-1/8" (28.6mm)

## NYLON BEARING HINGES

- Nylon bearing washers provide smooth door swing and long life
- High strength with stainless steel through pin
- Supplied as right hand. Reversible by removing pin and washer and reassembling on opposite sides of strap.

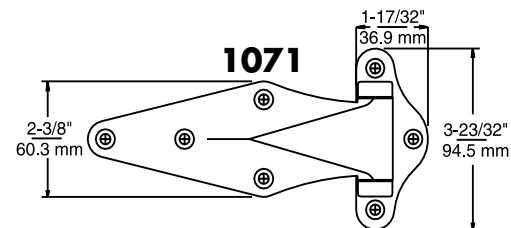
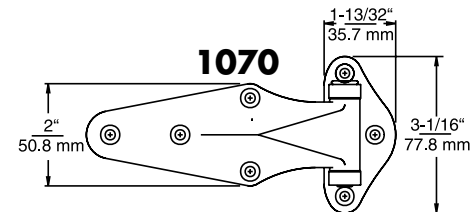
### SPECIFICATIONS

MATERIAL:	1070A	1071A
High pressure die-cast zinc, stainless steel pin	<b>MOUNTING:</b> Drilled and countersunk for No. 8 (4.0 mm) screws	<b>MOUNTING:</b> Drilled and countersunk for No. 10 (5.0 mm) screws
<b>FINISH:</b> Polished chrome	<b>LOAD RATING:</b> See Hinge Selector Chart, Group B	<b>LOAD RATING:</b> See Hinge Selector Chart, Group C
<b>OFFSETS:</b> See ordering information	<b>PACKAGING:</b> 24 per carton	<b>PACKAGING:</b> 24 per carton
	<b>WEIGHT:</b> Approx. 15 lb. (6.8 kg) per carton	<b>WEIGHT:</b> Approx. 23 lb. (10.5 kg) per carton

Model No.	Item	Offset
11070A00016	Nylon Bearing Hinge	7/8" (22.2 mm)
11070A00024	Nylon Bearing Hinge	1-1/8" (28.6 mm)
11071A00036	Nylon Bearing Hinge	7/8" (22.2 mm)
11071A00044	Nylon Bearing Hinge	1-1/8" (28.6 mm)

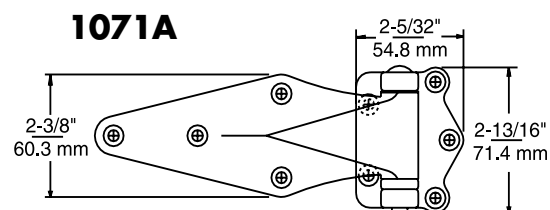
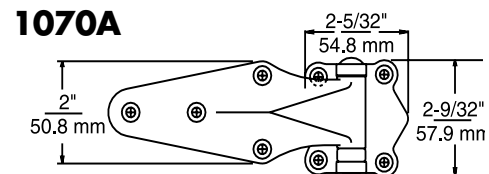
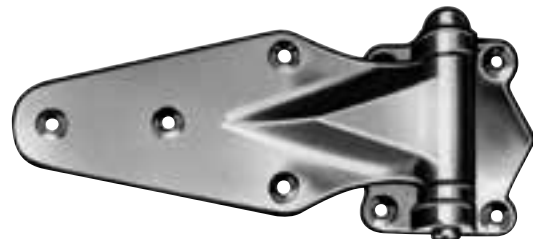
ITEM # 1070 NSF

COMPONENT



ITEM # 1070A NSF

COMPONENT





ITEM # 1522



ITEM # 1521



## PIVOT HINGES FOR REACH-IN AND PASS-THROUGH DOORS

- Smooth, self-closing operation.
- Dwell stop holds door open at 105° as long as required.
- For doors with minimum 1-3/4" (44.5 mm) offset.
- Top and bottom assemblies have identical hole sizes and spacing.
- Use standard, pre-punched door pans for right or left installation.
- Adjustable spring tension cartridge installs in 3/4" (19.0 mm) diameter round opening.

## SPECIFICATIONS

**MATERIAL:**  
Heavy gauge steel; high pressure die-cast zinc cartridge.

**FINISH:**  
Chrome.

**OFFSET:**  
1-3/8" (39.9 mm).

**LOAD RATING:**  
See Hinge Selector Chart, Group B.

**1522 TOP HINGE**  
Houses self-closing spring assembly.  
Use with No. 1521 Bottom Hinge, below.

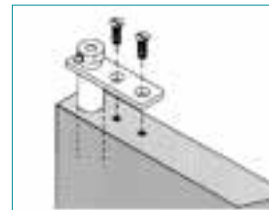
**MOUNTING:**  
Bottom plate drilled and countersunk and pivot flange drilled for No. 10 (5.0 mm) screws.

**1521 BOTTOM HINGE**  
Features dwell stop.  
Use with No. 1522 Top Hinge, above.

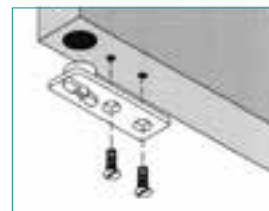
**MOUNTING:**  
Spring cartridge drilled and countersunk and pivot flange drilled for No. 10 (5.0 mm) screws.

Model No.	Item	Quantity/Carton	Weight/Carton
11522L00004	Top Left Hand Hinge	50	30 lb. (13.6kg)
11522R00008	Top Right Hand Hinge	50	30 lb. (13.6kg)
11521L00004	Bottom Left Hand Hinge	50	21 lb. (9.5kg)
11521R00008	Bottom Right Hand Hinge	50	21 lb. (9.5kg)

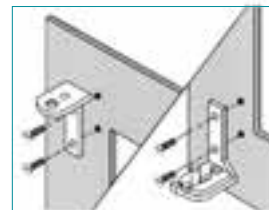
## EASY MOUNTING



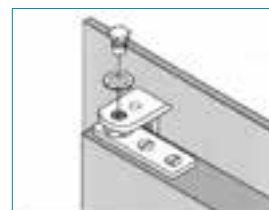
1. Fasten spring assembly to top of door.



2. Fasten bottom plate to bottom of door.



3. Fasten hinge bracket to frame.



4. Place door between hinge brackets and secure with hinge pins.

## KASON POWER PIVOT HINGES



ITEM # 1556-304



## COMPONENT



ITEM # 1556-308



COMPONE

## CONCEALED SPRING HINGES FOR NON-RISE FULL FACE DOORS

- New design features solid steel shaft, which provides increased strength and long term durability. Will last longer than any other comparable concealed spring hinge currently offered.
- 2-year limited warranty, longest warranty available in marketplace
- High tech Polymer cam reduce wear due to friction and extend life of cams 2 to 3 times more door open cycles than any other comparable concealed spring hinges currently offered.
- Hinge supplied with close out caps that snap on top of cartridge. Close caps eliminate issues with liquid foam infiltration through the top of cartridge
- Built in dwell keeps door open beyond 110°
- Hinges with stop feature cushioning action at about 140° provides protection against over opening and damage to frame and adjacent equipment
- Doors close fully with self-closing, non-rise spring actuated cam action
- Self-Lubricating for long maintenance free smooth operation
- Versatile, reversible cartridge assembly can be used for either right or left opening doors
- Quiet operation

## 1556 POWER CARTRIDGE ASSEMBLIES

## 1556-304

Standard clearance, approx. 140° stop. Heavy spring

**1556-308**

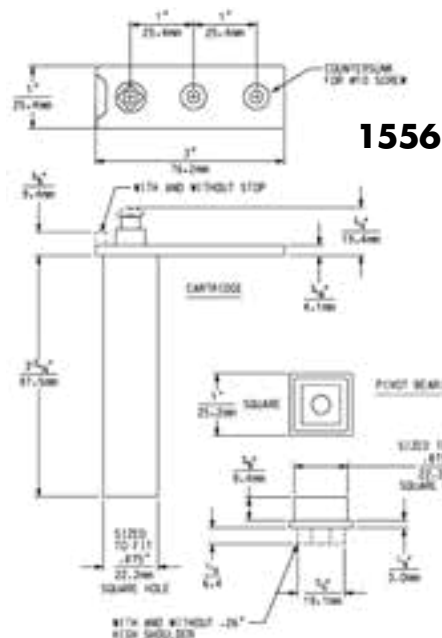
Minimal clearance, no stop. Light spring

## CARTRIDGE SPECIFICATIONS

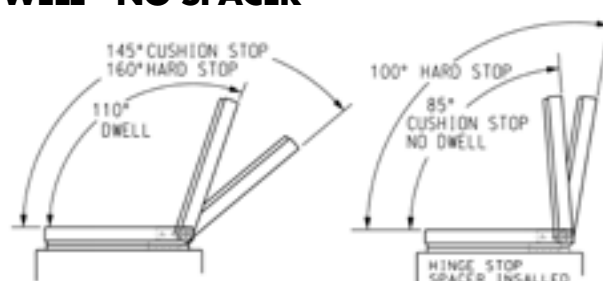
<b>MATERIAL:</b> Die-cast Zamak case, acetal upper cam. Nylon lower cam and pivot bearing	<b>CLOSING FORCE:</b> @45°: Heavy: 36 in.-lbs. (4N•M) Light: 27 in.-lbs (3N•M)	<b>LOAD RATING:</b> See Hinge Selector Chart, Group B
<b>FINISH:</b> Chrome plated	<b>PIVOT DISTANCE:</b> 1-5/16" (33.3 mm)	<b>PACKAGING:</b> 48 per carton
<b>SPRING:</b> Compression type music wire	<b>MOUNTING:</b> Countersunk for No. 10 (5.0 mm) screws	<b>WEIGHT:</b> 25 lb. (11.3 kg) per carton

## BRACKETS SPECIFICATIONS

<b>MATERIAL:</b> High strength steel	<b>FINISH:</b> Zinc plated	<b>MOUNTING:</b> Slotted for 1/4" (6.4 mm) screws	<b>PACKAGING:</b> 24 per carton
<b>Order cartridges and brackets separately</b>			<b>WEIGHT:</b> 8 lb. (3.6 kg)



## DWELL - NO SPACER



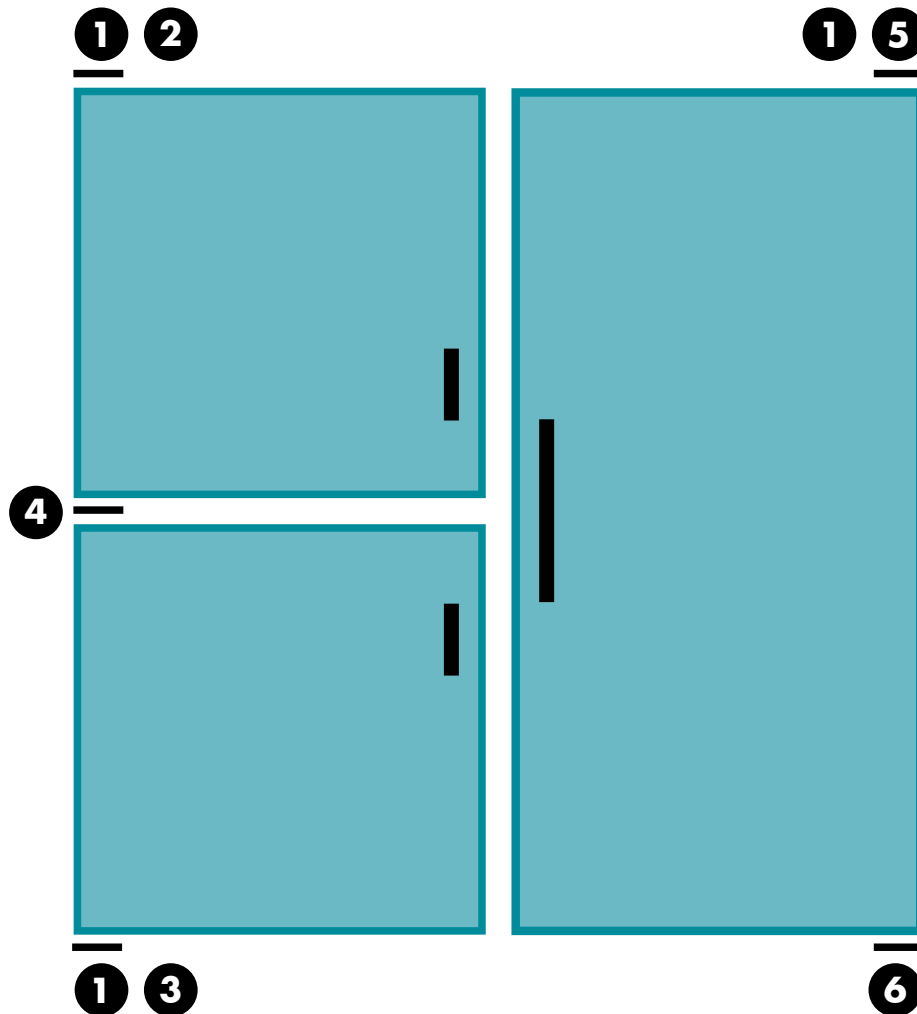
## DWELL - WITH SPACER

## HOW TO SELECT KASON 1556 SERIES POWER CARTRIDGES AND BRACKETS

A typical application example is illustrated to help you select the correct parts for your cabinets.

### ASSEMBLY WITH HORIZONTAL BRACKETS:

- 1. Cartridge Assembly
- 2. Top Cartridge Bracket, LH
- 3. Bottom Cartridge Bracket, LH
- 4. Double Pivot Bracket, LH
- 5. Top Cartridge Bracket, RH
- 6. Bottom Pivot Bracket, RH



For part numbers and bracket details,  
see Ordering Information.

## INSTALLATION

- Cartridge and pivot bearing install easily; require a 7/8" (22.2 mm) square opening in top and bottom of door
- Brackets are available for a variety of fabrication requirements
- Standard brackets shown on following page
- Custom brackets can be designed to suit your specific installation

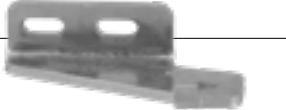


# KASON POWER PIVOT HINGES

**1556-12 (A)**  
**TOP RIGHT**



**1556-14 (B)**  
**BOTTOM RIGHT**



**1556-22 (C)**  
**TOP RIGHT**



**1556-24 (D)**  
**BOTTOM RIGHT**



**1556-36 (E)**  
**DOUBLE BOTTOM RIGHT**



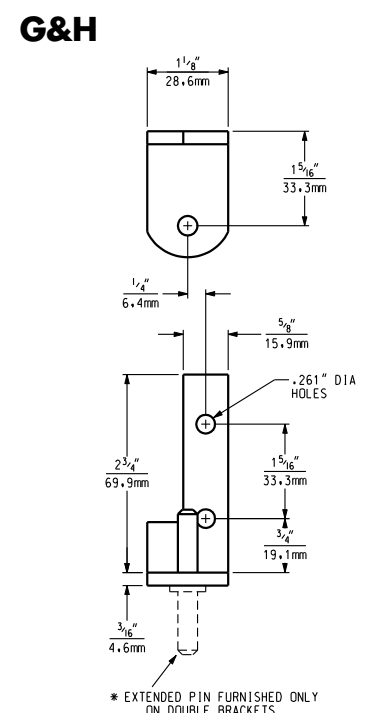
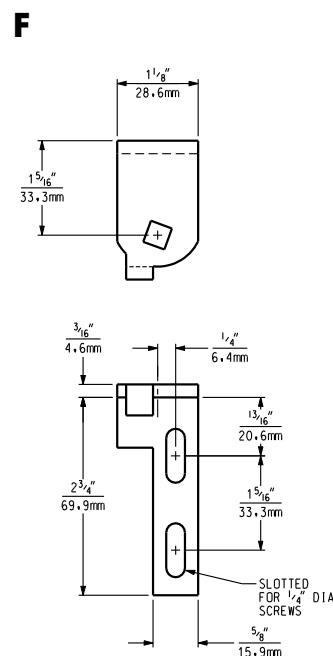
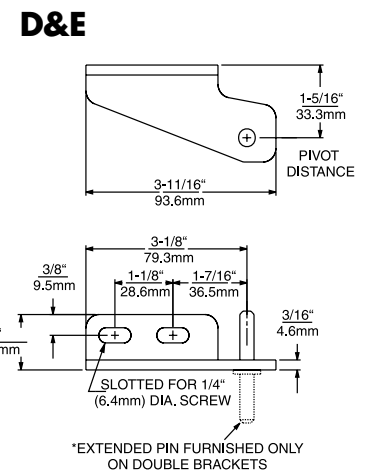
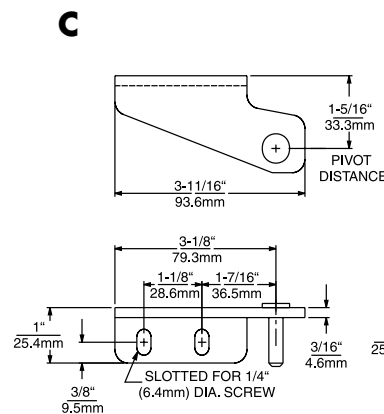
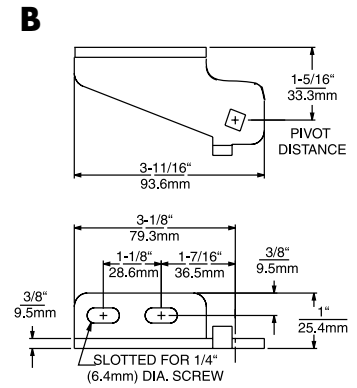
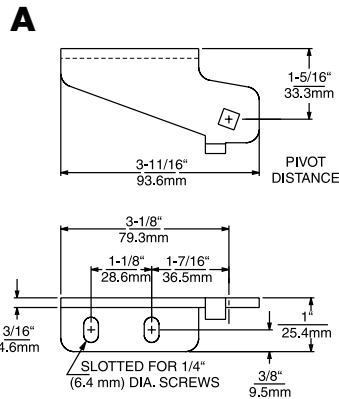
**1556-202F (F)**  
**STOP FLANGE (RIGHT HAND)**



**1556-203F (G)**  
**PIVOT FLANGE CENTER (RIGHT HAND)**



**1556-204F (H)**  
**PIVOT FLANGE (RIGHT HAND)**

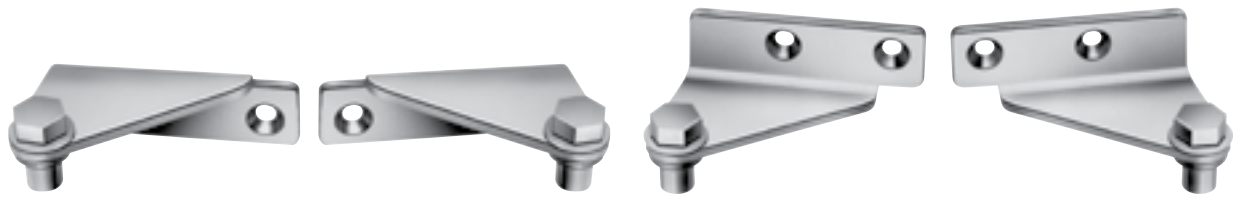




Type	Product Number	Product Name	Abbreviated Name	Dwell	Cushion Stop	Hard Stop	Torque	Illustrated
Power Cartridge	11556000308	Cartridge Assembly, No Stop, Light Spring	1556-308	110°	None	None	27 in. lbs @45°	YES
Loose Parts	90153230110025	Lockwasher, #12, Type B, Int. Size						
Loose Parts	9001419F110312	Screw, 10-32X5/16 thd, Ps, Ma, Sz						
Loose Parts	91556004390117	Bearing, .292 Hole						
Power Cartridge	11556000304	Cartridge Assembly, Stop, Heavy Spring	1556-304	110°	145°	160°	36 in. lbs @45°	YES
Loose Parts	90153230110025	Lockwasher, #12, Type B, Int. Size						
Loose Parts	9001419F110312	Screw, 10-32X5/16 Thd, Ps, Ma, Sz						
Loose Parts	91556004400117	Bearing, High .292 Hole, .26" Shoulder						
Loose Parts	91556002560117	Washer, .75Ø OD .49Ø ID (QM2)						
Loose Parts	91556001620167	Spring, Torsion, Omega						
Loose Parts	115560SP304	Bulk Small Parts Hardware Pack, 304						
Loose Parts	115560SP306	Bulk Small Parts Hardware Pack, 306						
Loose Parts	15560SP308	Bulk Small Parts Hardware Pack, 308						
Stop (Accessory for 1556-304)	11556003030035K	Hinge Stop, 60°	1556-303-35K	None	85°	100°	36 in. lbs @45°	NO

Type	Product Number	Product Name	Abbreviated Name	Type	Orientation	Mount	Illustrated
Bracket	11556000051	Flange No Stop Top (LH) Chrome	1556-51	Horizontal	(LH) hand	Top	NO
Bracket	11556000052	Flange No Stop Top (RH) Chrome	1556-52	Horizontal	(RH) hand	Top	NO
Bracket	11556000201F	Flange Stop (LH) Chrome	1556-201F	Vertical	(LH) hand	Top	NO
Bracket	11556000202F	Flange Stop (RH) Chrome	1556-202F	Vertical	(RH) hand	Top	YES
Bracket	11556000203F	Pivot Flange Center (RH) Chrome	1556-203F	Vertical	(RH) hand	Center	YES
Bracket	11556000204F	Pivot Flange (RH) Chrome	1556-204F	Vertical	(RH) hand	Bottom	YES
Bracket	11556000205F	Pivot Flange (LH) Chrome	1556-205F	Vertical	(LH) hand	Bottom	NO
Bracket	11556000213F	Pivot Flange Center (LH) Chrome	1556-213F	Vertical	(LH) hand	Center	NO
Bracket	11556000011	Flange Stop Top (LH) Chrome	1556-11	Horizontal	(LH) hand	Top	NO
Bracket	11556000012	Flange Stop Top (RH) Chrome	1556-12	Horizontal	(RH) hand	Top	YES
Bracket	11556000013	Flange Stop Bottom (LH) Chrome	1556-13	Horizontal	(LH) hand	Bottom	NO
Bracket	11556000014	Flange Stop Bottom (RH) Chrome	1556-14	Horizontal	(RH) hand	Bottom	YES
Bracket	11556000021	Flange Pivot Top (LH) Chrome	1556-21	Horizontal	(LH) hand	Top	NO
Bracket	11556000022	Flange Pivot Top (RH) Chrome	1556-22	Horizontal	(RH) hand	Top	YES
Bracket	11556000023	Flange Pivot Bottom (LH) Chrome	1556-23	Horizontal	(LH) hand	Bottom	NO
Bracket	11556000024	Flange Pivot Bottom (RH) Chrome	1556-24	Horizontal	(RH) hand	Bottom	YES
Bracket	11556000035	Flange Double Pivot (LH) Chrome	1556-35	Horizontal	(LH) hand	Center	NO
Bracket	11556000036	Flange Double Pivot (RH) Chrome	1556-36	Horizontal	(RH) hand	Center	YES

# KASON PIVOT HINGES



ITEM # 1510



ITEM # 1511



ITEM # 1530



ITEM # 1531



## HORIZONTAL FACE-MOUNTED PIVOT HINGES

- For use on reach-in and pass-through cabinet doors for almost any hinged door application.
- Fully interchangeable. Use in combination with each other or with any other Kason horizontal face-mounted hinges.

### SPECIFICATIONS

<b>MATERIAL:</b> Heavy gauge steel; Oilite bearing	<b>MOUNTING:</b> Drilled and countersunk for No. 10 (5.0 mm) screws	<b>LOAD RATING:</b> See Hinge Selector Chart, Group B
<b>FINISH:</b> Heavy duty chrome plate	<b>PACKAGING:</b> 100 per carton	<b>WEIGHT:</b> Approx. 17 lb. (7.7 kg) per carton

### 1510 HINGE

Mounts upper left or lower right

### 1511 HINGE

Mounts upper right or lower left

### 1530 HINGE

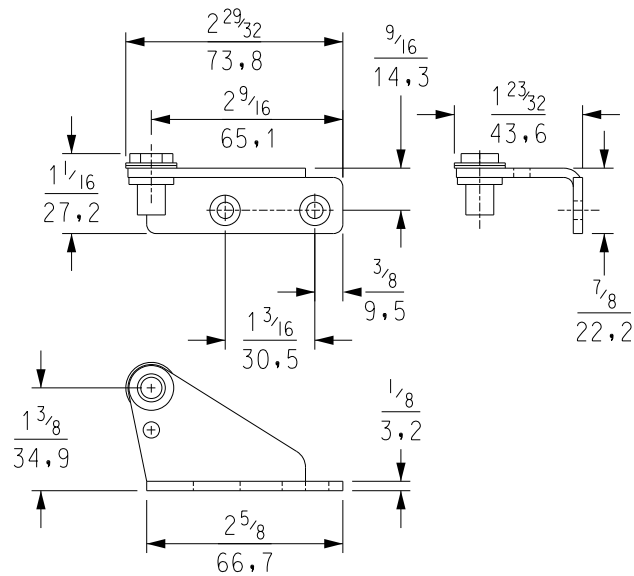
Mounts upper left or lower right

### 1531 HINGE

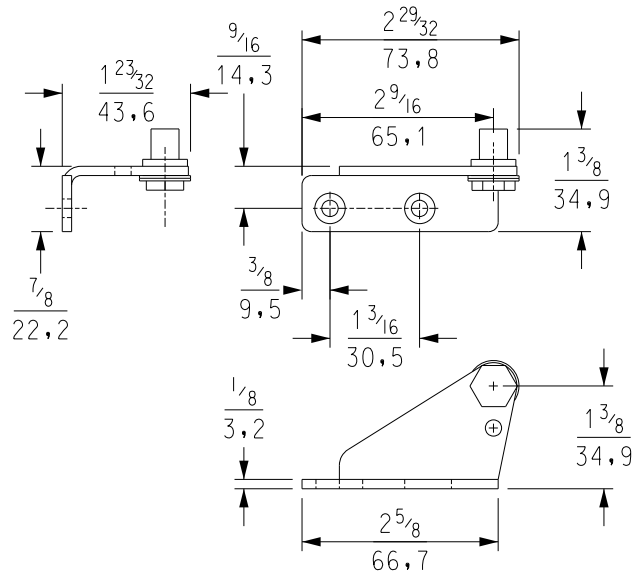
Mounts upper right or lower left

Model No.	Item
1151000004	Pivot Hinge, Upper Left or Lower Right
1151100004	Pivot Hinge, Upper Right or Lower Left
1153000004	Pivot Hinge, Upper Left or Lower Right
1153100004	Pivot Hinge, Upper Right or Lower Left

## 1510 & 1511



## 1530 & 1531





ITEM # 1512



ITEM # 1513



ITEM # 1532



ITEM # 1533



## HORIZONTAL FACE-MOUNTED PIVOT HINGES

- Use on reach-in and pass-through doors for almost any application.
- Fully interchangeable. Use in combination with each other or with any Kason horizontal face-mounted pivot hinges.

### SPECIFICATIONS

<b>MATERIAL:</b> Heavy gauge steel	<b>MOUNTING:</b> Drilled and countersunk for No. 10 (5.0 mm) screws	<b>LOAD RATING:</b> See Hinge Selector Chart, Group B
<b>FINISH:</b> Heavy duty chrome plate	<b>PACKAGING:</b> 50 per carton	<b>WEIGHT:</b> Approx. 18 lb. (8.2 kg) per carton

### 1512 HINGE

Mounts upper left or lower right

### 1513 HINGE

Mounts upper right or lower left

### 1532 HINGE

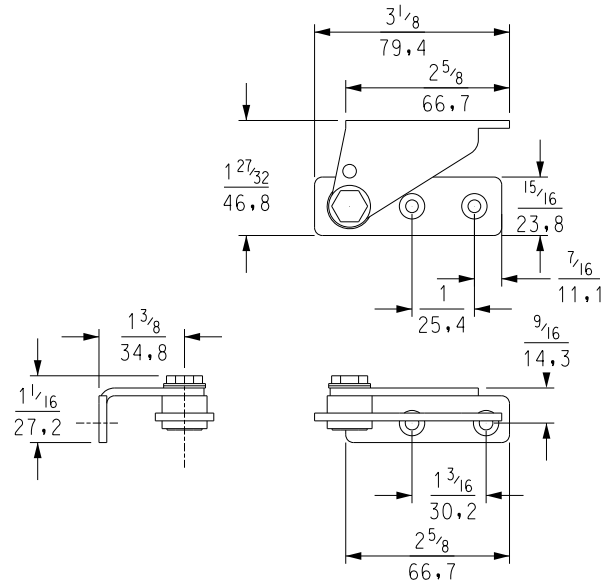
Mounts upper left or lower right

### 1533 HINGE

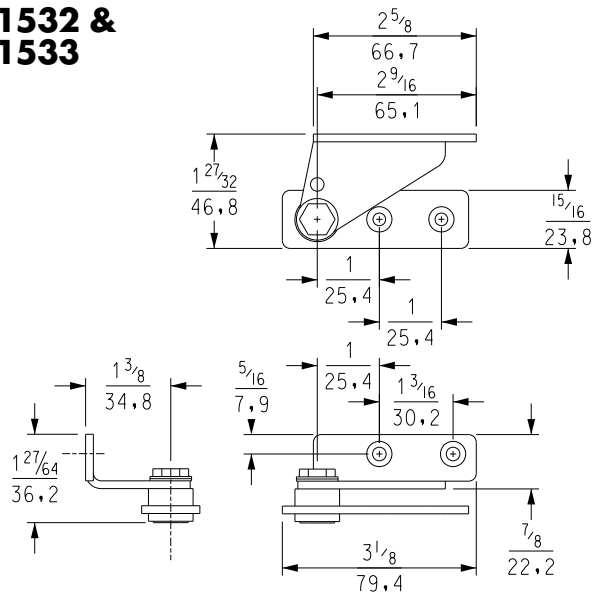
Mounts upper right or lower left

Model No.	Item
11512000004	Pivot Hinge, Upper Left or Lower Right
11513000004	Pivot Hinge, Upper Right or Lower Left
11532000004	Pivot Hinge, Upper Left or Lower Right
11533000004	Pivot Hinge, Upper Right or Lower Left

## 1512 & 1513



## 1532 & 1533





COMPONENT

ITEM # 171



®  
U.S. Trademark 2,319,965



**171 CYLINDER**



**171 KNOB**

## 171 SERIES MAGNETIC LATCHES

- Versatile family offers multiple choices for heated and refrigerated applications.
- Four handle styles in locking and non-locking models
- Powerful magnetic force assures positive, air-tight door closure.
- Kason 'breaker action' quickly releases magnet for fast door opening.
- Two-way adjustment adapts latch for changing door alignment.
- Adjustable latch body compensates for gasket wear.
- Strike adjusts vertically to accommodate door sag on locking models.
- Fast installation

## SPECIFICATIONS

**MATERIAL:**  
High pressure die-cast zinc body and adjustment plate; zinc die-cast or glass reinforced composite handle; one piece steel strike

**FINISH:**  
Polished chrome latch body; black composite or polished chrome handle

**HANDLE STYLES:**  
Offset, straight, straight with vinyl sleeve

**LOCK SELECTION:**  
Key cylinder lock or knob turn. Non-cylinder latches can be converted to cylinder locking. Cylinder locks may be keyed alike or differently; 4 key changes available; please specify (11, 13, 14, 16)

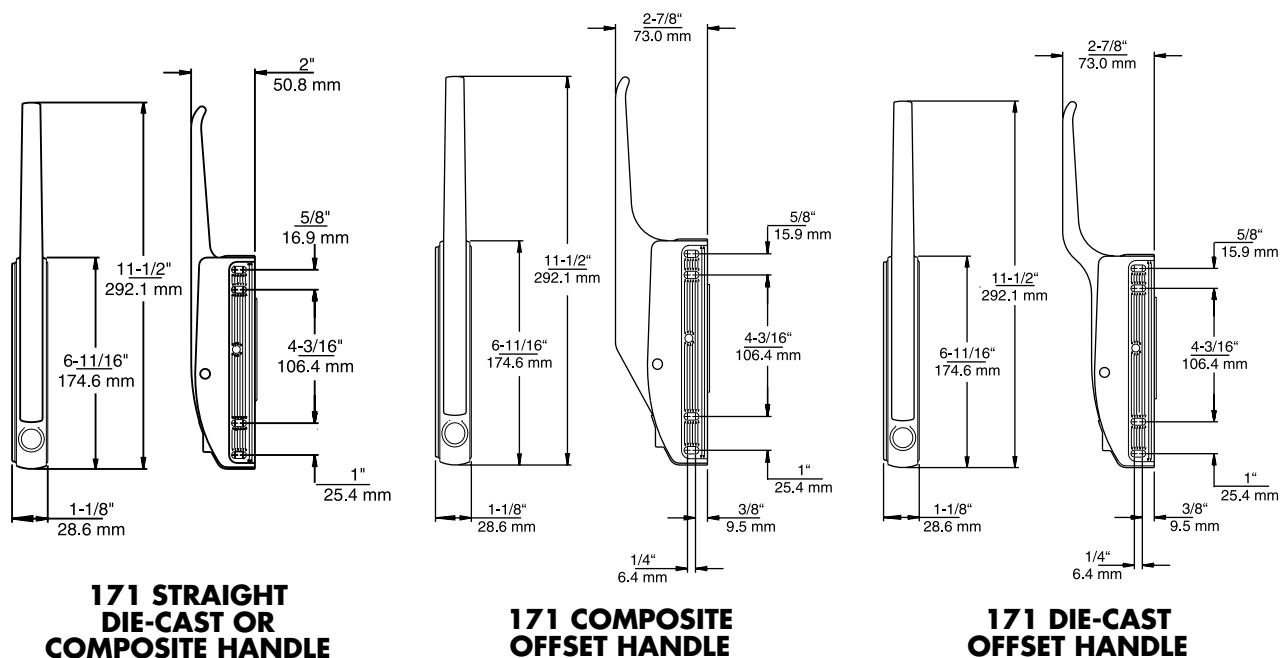
**STANDARD MAGNET:**  
Nitrile material; holding force approx. 50 lb. (222.0 N)

**CERAMIC MAGNET:** Holding force of approximately 100 lb. (445.0 N); Recommended for temperature applications above 280°F (138.8°C) or where greater holding power is required

**MOUNTING:**  
Latch is edge mounted; strike is surface mounted. Drilled and countersunk for No. 10 (5.0 mm) screws

**PACKAGING/WEIGHT:**  
See ordering information

**PathoGuard™** treated antimicrobial handles available. Consult your Kason representative.



Model No.	Handle	Lock	Magnet	Qty/Ctn	Weight/Ctn
10171000004	Straight Die-cast, Pol. Chrome	*	Standard	12	39 lb. (17.7kg)
10171000014	Straight Die-cast, Pol. Chrome	*	Ceramic	12	39 lb. (17.7kg)
10171C00004	Straight Die-cast, Pol. Chrome	Cylinder	Standard	12	39 lb. (17.7kg)
10171B00008	Offset Composite, Black	*	Standard	12	31.8 lb. (14.4kg)
10171B00018	Offset Composite, Black	*	Ceramic	12	31.8 lb. (14.4kg)
10171B00024	Offset Die-cast, Pol. Chrome	*	Standard	12	39 lb. (17.7kg)
10171B00034	Offset Die-cast, Pol. Chrome	*	Ceramic	12	39 lb. (17.7kg)
10171S00008	Straight Composite, Black	*	Standard	12	31.8 lb. (14.4kg)
10171S00018	Straight Composite, Black	*	Ceramic	12	31.8 lb. (14.4kg)
10171BC0008	Offset Composite, Black	Cylinder	Standard	12	31.8 lb. (14.4kg)
10171BC0018	Offset Composite, Black	Cylinder	Ceramic	12	31.8 lb. (14.4kg)
10171BC0024	Offset Die-cast, Pol. Chrome	Cylinder	Standard	12	39 lb. (17.7kg)
10171BC0034	Offset Die-cast, Pol. Chrome	Cylinder	Ceramic	12	39 lb. (17.7kg)
10171SC0008	Straight Composite, Black	Cylinder	Standard	12	31.8 lb. (14.4kg)
10171SC0018	Straight Composite, Black	Cylinder	Ceramic	12	31.8 lb. (14.4kg)
10171BK0008	Offset Composite, Black	Turn Knob	Standard	12	31.8 lb. (14.4kg)
10171BK0018	Offset Composite, Black	Turn Knob	Ceramic	12	31.8 lb. (14.4kg)
90171CM0004	Cylinder Kit for 171 & 171B				

\*Can be converted to cylinder locking with 90171CM0004 Cylinder Kit. Cylinder locks may be keyed alike or differently; 4 key changes available; please specify



®  
U.S. Trademark 5,760,311



## 170 SERIES MAGNETIC LATCHES

- Satisfies NSF standards for all applications
- Four handle styles
- High strength magnetic force keeps door closed and accommodates variations in cabinet construction
- Kason 'breaker action' quickly releases magnet for fast door opening
- Adjustable latch body compensates for gasket wear
- Not affected by door sag

## SPECIFICATIONS

### MATERIAL:

High pressure die-cast zinc body and adjustment plate; zinc die-cast or glass reinforced composite handle; steel strike with nylon spacer

### FINISH:

Polished chrome latch body; black composite or polished chrome handle

### HANDLE STYLES:

Straight, offset

### MOUNTING:

Latch is edge mounted; strike is surface mounted. Drilled and countersunk for No. 10 (5.0 mm) screws

### STANDARD MAGNET:

Nitile material; holding force approx. 50 lb. (222 N)

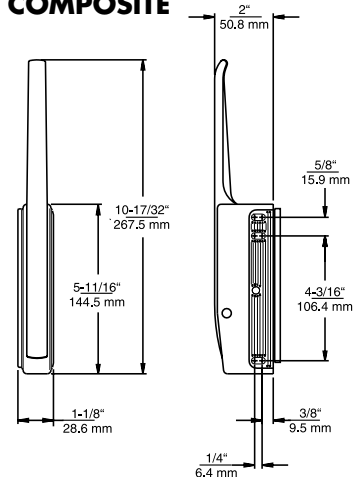
### OPTIONAL CERAMIC MAGNET:

Holding force of 100 lb. (445 N); Recommended for temperature applications above 280°F (138.8°C) or where greater holding power is required

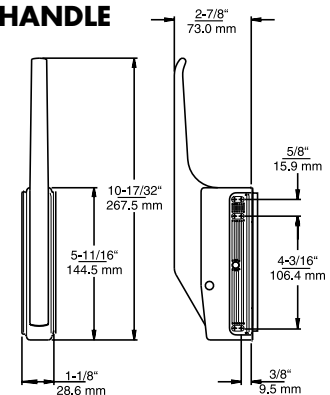
**PathoGuard™** treated antimicrobial handles available. Consult your Kason representative.

Model No.	Handle	Magnet	Quantity/ Carton	Weight/ Carton
1017000008	Offset Composite, Black	Standard	12	27 lb. (12.3kg)
1017000018	Offset Composite, Black	Ceramic	12	27 lb. (12.3kg)
10170S00004	Straight Die-cast, Pol.Chrome	Standard	12	27 lb. (12.3kg)
10170S00014	Straight Die-cast, Pol.Chrome	Ceramic	12	27 lb. (12.3kg)
10170S00008	Straight Composite, Black	Standard	12	27 lb. (12.3kg)
10170S00018	Straight Composite, Black	Ceramic	12	27 lb. (12.3kg)
10170B00024	Offset, Die-cast, Pol.Chrome	Standard	12	34 lb. (15.3kg)
10170B00034	Offset, Die-cast, Pol.Chrome	Ceramic	12	34 lb. (15.3kg)

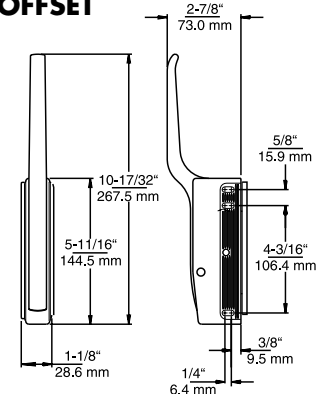
## 170 STRAIGHT DIE-CAST OR COMPOSITE



## 170 COMPOSITE OFFSET HANDLE



## 170 DIE-CAST OFFSET





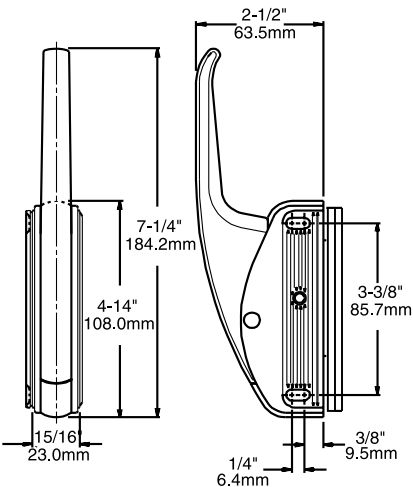
®  
U.S. Trademark 4,906,919

ITEM # 544



544 COMPACT MAGNETIC EDMOUNT LATCH

- Compact size for smaller heated cabinets where space is limited
- Non-heat conducting composite, offset handle
- Kason’s time-tested magnetic latching system
- Breaker action releases magnet for easy opening
- Operates smoothly with handle mounted up or down
- Not affected by door sag
- Use on right or left-opening doors



544 STRIKE

SPECIFICATIONS

**MATERIAL:**  
High pressure die-cast zinc body; glass reinforced composite handle; steel strike

**FINISH:**  
Polished chrome latch body, chrome strike; black composite handle

**STANDARD MAGNET:**  
Chemical-resistant Nitrile – holding force approx. 40 lb. (178 N).

**OPTIONAL HI-TEMP MAGNET:**  
Ceramic – holding force of 80 lb. (356 N). Recommended for temperature applications above 280°F (138.8°C) or where greater holding power is required.

**MOUNTING:**  
Latch is edge mounted; strike is surface mounted. Drilled and countersunk for No. 10 (5.0 mm) flat head screws

**PACKAGING:**  
12 per carton

**WEIGHT:**  
21 lb. (9.5 kg) per carton

**PathoGuard™** treated antimicrobial handles available. Consult your Kason representative.

Model No.	Item	Magnet
10544000004	Latch	Standard
10544000014	Latch	Ceramic

# KASON EDGEMOUNT LATCHES

## 172 MAGNETIC-MECHANICAL LATCH

- Magnetic force combined with mechanical latching provide the ultimate in positive door closure and sealing.
- Latch releases with ease.
- Mechanical latching with cylinder lock offers positive security
- Keeps door shut even when adjacent doors are slammed.
- Two-way strike adjustment compensates for door-sag and gasket wear.
- Unique design of strike ensures full magnetic attraction at each adjustment.

### SPECIFICATIONS

**MATERIAL:**  
High pressure die-cast zinc body, handle and strike

**FINISH:**  
Polished chrome

**HANDLE STYLES:**  
Straight, offset

**LOCK SELECTION:**  
Cylinder or non-cylinder locking

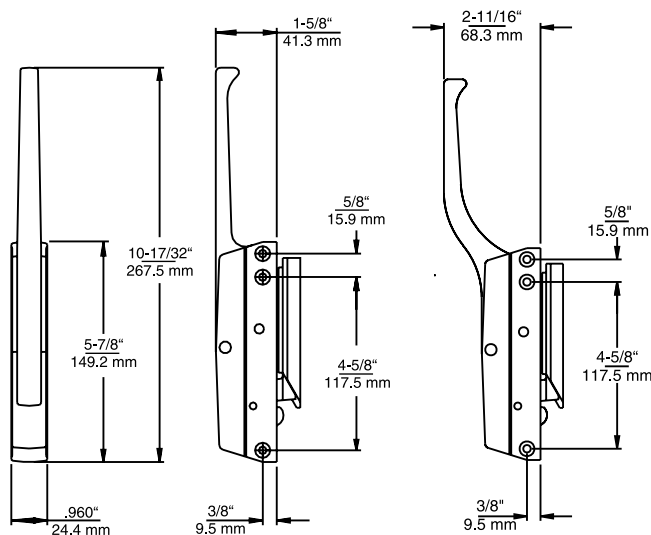
**PACKAGING:**  
12 per carton

**WEIGHT:**  
25 lb. (11.4 kg) per carton

**MOUNTING:**  
Latch is edge mounted; strike is surface mounted. Drilled and countersunk for No. 10 (5.0 mm) screws

Model No.	Handle	Lock
10172000006	Straight	None
10172B00006	Offset	None
10172C00006	Straight	Cylinder
10172BC0006	Offset	Cylinder
90172CM0004		Cylinder Kit for 172

Cylinder locks may be keyed alike or differently;  
5 key changes available; please specify  
Models available with heat-resistant, vinyl sleeve.



**172 STRAIGHT**

**172B OFFSET**

**ITEM # 172**





## EDGMOUNT MECHANICAL LATCHES

- Positive latching keeps door shut tight; guards against pop-opens.
- Finger-tip touch opening
- Cylinder locking and non-locking models
- Two-way adjustment compensates for door sag and gasket wear.
- Use with all standard gaskets for economical installation.
- Compact size fits most units.

## SPECIFICATIONS

**MATERIAL:**  
High pressure die-cast zinc  
body and handle, die-cast  
and steel strike

**FINISH:**  
Polished chrome

**MOUNTING:**  
Latch is edge mounted;  
strikes are surface mounted.  
Drilled and countersunk for  
No. 10 (5.0 mm) screws

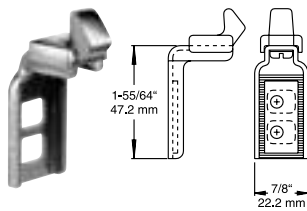
**PACKAGING:**  
12 per carton

**WEIGHT:**  
Approx.  
17 lb. (7.7 kg)  
per carton

### 173 UNIVERSAL

Latch with universal strike replaces competitive latch. Strike Adjustment Range: 9/32" (7.1 mm) to 19/32" (15.1 mm)

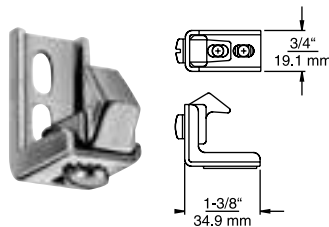
**MOUNTING:**  
Strike drilled for No. 10 (5.0 mm) screws



### 174 STANDARD

Latch body with 174 standard strike. Strike Adjustment Range: 13/32" (10.3 mm) to 23/32" (18.3 mm)

**MOUNTING:**  
Strike drilled for No. 10 (5.0 mm) screws



### 174B-14 OVEN LATCH

Oven latch with all the benefits of popular Kason No. 174 edgemount latch, plus these added features:

- Heat-resistant brass roller
- Cool-touch handle with plastic sleeve
- Complements Kason No. 1216-31 Hi-Temp brass oven hinge

**STRIKE ADJUSTMENT RANGE:**  
13/32" to 23/32"  
(10mm-18mm)

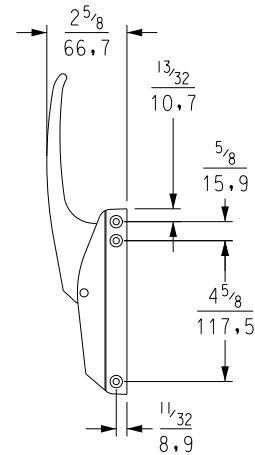
Model No.	Description
10173000004	Straight Handle, Non-Locking
10173B00004	Offset Handle, Non-Locking
10173C00004	Straight Handle, Cylinder Lock
10173BC00004	Offset Handle, Cylinder Lock
10174000004	Straight Handle, Non-Locking
10174B00004	Offset Handle, Non-Locking
10174B00014	Hi-Temp Latch Brass Roller, Offset Handle w Plastic Sleeve
10174C00004	Straight Handle, Cylinder Lock
10174B00004	Offset Handle, Cylinder Lock
90174C00012	Cylinder Kit for 173, 174, & 176

Cylinder locks may be keyed alike or differently. 5 key changes available; Please specify.  
Models available with heat-resistant vinyl sleeve.

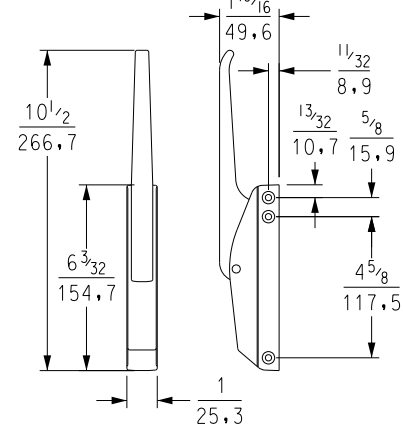
## LATCH BODY



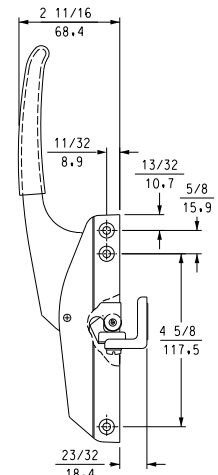
### OFFSET



### STRAIGHT



### 174B-14 HI-TEMP



## 177 EDMOUNT MECHANICAL LATCHES

- Large footprint latch
- Zero handle movement on door closing
- All cylinder or non-cylinder model latch with simplistic internal function
- Chrome Latch with Black Composite Heat Resistant Handle and brass roller for oven application (Optional)
- No drill fixture modification required
- Slotted hex screw fastener eases strike adjustment
- Bolt up retro fit replacement for user's of Kason Model 174 Latch and Strike
- No pinch point handle for improved safety, protects against employee injury
- Long term dependable service reduces maintenance cost

### SPECIFICATIONS

**MATERIAL:**  
High pressure die-cast zinc body and handle, die-cast and steel strike. Composite handle available.

**FINISH:**  
Polished chrome.

**MOUNTING:**  
Latch is edge mounted; strikes are surface mounted. Drilled and countersunk for No. 10 (5.0 mm) screws.

**PACKAGING:**  
12 per carton.

**WEIGHT:**  
Approx. 20 lb. (9.09 kg) per carton.

## 177 STRIKE ASSEMBLIES

### UNIVERSAL

Strike Adjustment Range:  
9/16" (14.3 mm) to 1" (25.4 mm).

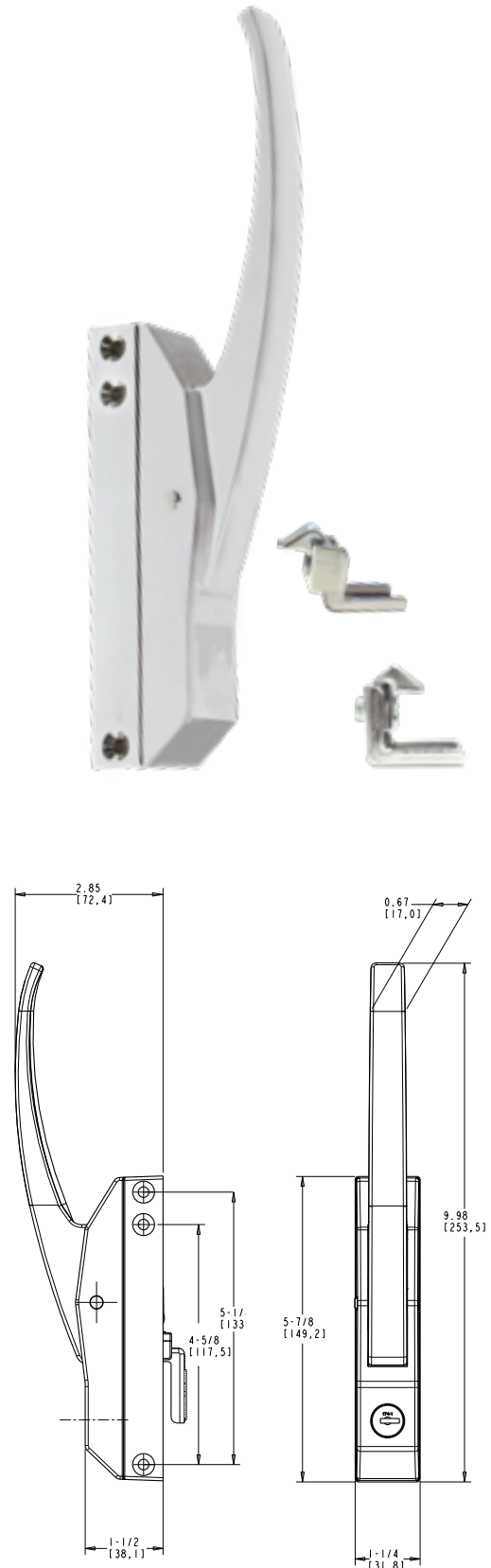


### STANDARD

Strike Adjustment Range:  
21/32" (16.7 mm) to 1-3/32" (27.8 mm).



Model	Description
10177BC0004	Latch, Chrome, Cylinder Model
10177B00004	Latch, Chrome, Non-Cylinder Model
10177BCP004	Latch, Chrome, Composite Handle, Cylinder Model
10177BP0004	Latch, Chrome, Composite Handle, Non-Cylinder Model
10177BP0014	Latch, Chrome, Composite Handle, Brass Roller, Non Cylinder Model
All models come standard with universal and standard strike assemblies for easy retrofit.	



## EDGEMOUNT MECHANICAL LATCHES

- Smooth-operating trigger-action latches
- Kason patented two-way adjustable microturn strike adjusts to compensate for gasket compression and door sag
- Positive, closure with little force
- Easy release

## SPECIFICATIONS

<b>MATERIAL:</b> High pressure die-cast zinc body, handle and strike; brass tongue	<b>533D</b>	<b>538</b>
<b>FINISH:</b> Polished chrome	<b>PACKAGING:</b> 12 per carton	<b>Available with cylinder lock or with removable plug for cylinder lock</b>
<b>MOUNTING:</b> Drilled and countersunk for No. 10 (5.0 mm) screws	<b>WEIGHT:</b> Approx. 18 lb. (802 kg) per carton	<b>PACKAGING:</b> 12 per carton
		<b>WEIGHT:</b> Approx. 21 lb. (9.5 kg) per carton

**PathoGuard™** treated antimicrobial handles available. Consult your Kason representative.

Model No.	Item	Lock
10533D00004	Latch	Padlocking
10538000004	Latch	Padlocking
10538C00004	Latch	Cylinder
10533D00024	Strike for 533D, 538 & 538C	
90538CM0004	Cylinder Kit for 538	

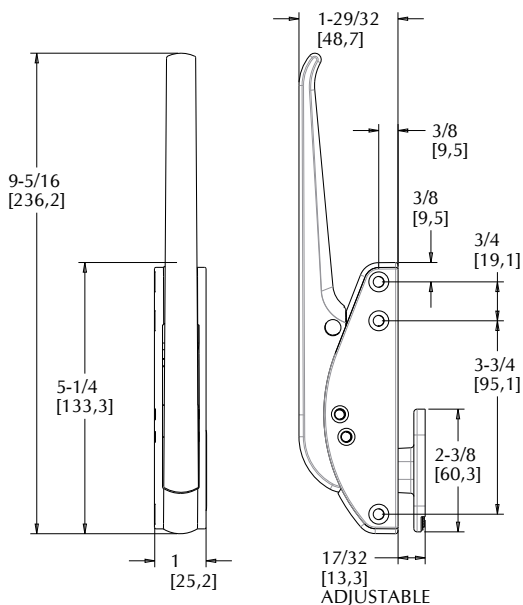
Cylinder locks may be keyed alike or differently. 5 key changes available; please specify.  
Models available with heat-resistant, vinyl sleeve.



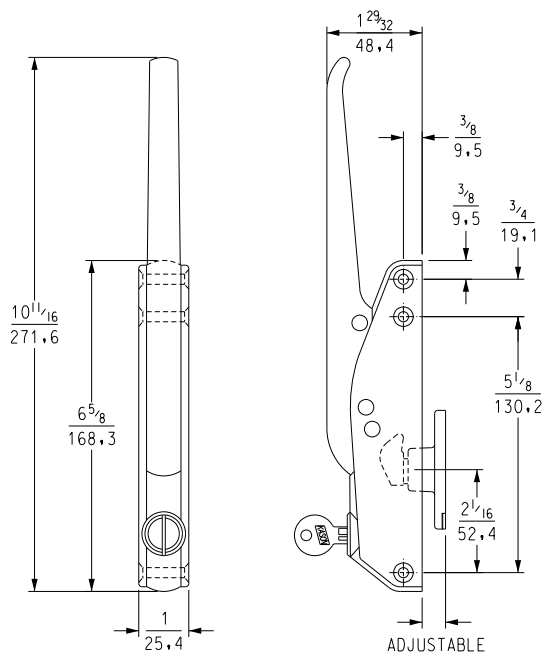
**ITEM # 533D**

**ITEM # 538**

### 533D



### 538



## 531 TRIGGER ACTION SERIES

- Slim, strong flush mounting latch. Two-way adjustable strike
- Easy closing with positive mechanical seal.
- Easy release
- Straight or offset handle
- Locking or non-locking models

### SPECIFICATIONS

**MATERIAL:**  
High pressure  
die-cast zinc  
body and strike  
housing; brass  
handle, strike  
insert and tongue

**FINISH:**  
Polished chrome

**MOUNTING:**  
Drilled and countersunk  
for No. 10 (5.0 mm)  
screws

**PACKAGING:**  
12 per carton  
complete with  
strikes

**WEIGHT:**  
Approx. 22 lb.  
(10.0 kg) per  
carton

Model No.	Item	Handle	Lock
10531000004	Latch	Straight	None
10531B00004	Latch	Offset	None
10531C00004	Latch	Straight	Cylinder
10531BC0004	Latch	Offset	Cylinder
90531CM0004	Cylinder Kit for 531C & 531BC		
Cylinder locks may be keyed alike or differently; 5 key changes available; please specify.			

## 535 ROLLER GRIP

- Kason Original – the standard for concealed latching. Tapered strike assures complete closure.
- Strike adjusts up/down or side to side.
- Use on doors and drawers

### SPECIFICATIONS

**MATERIAL:**  
High pressure  
die-cast zinc tongue  
housing and strike;  
nylon rollers

**MOUNTING:**  
Tongue housing drilled  
and countersunk for No.  
10 (5.0 mm) screws.  
Strike has slotted screw  
holes

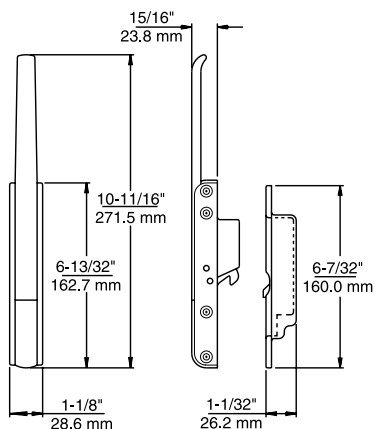
**WEIGHT:**  
Approx.  
17-1/2 lb.  
(7.9 kg) per  
carton

**FINISH:**  
Polished chrome

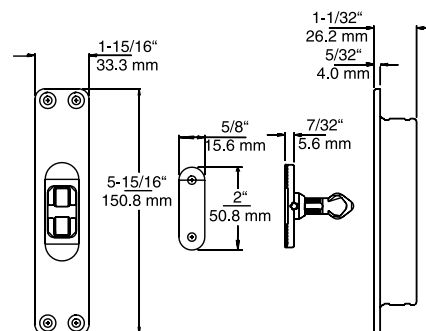
**PACKAGING:**  
24 per carton complete  
with strikes

Model No.	Item	Separating Force
10535H00004	Latch Heavy Spring	26 to 36 lb. (116 to 160 N)
10535M00004	Latch Medium Spring	19 to 25 lb. (85 to 111 N)
10535L00004	Latch Light Spring	12 to 18 lb. (53 to 80 N)

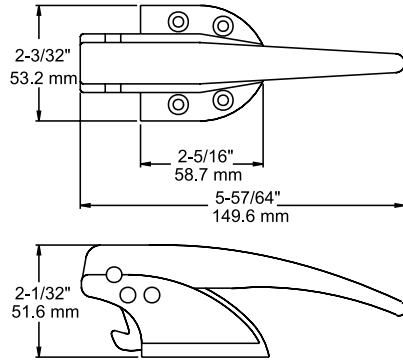
### ITEM # 531



### ITEM # 535



## 930 BODY



**ITEM # 930**

## 930 SERIES TRIGGER ACTION LATCHES

- Dependable, time-tested trigger action latch.
- Select one of six strikes to customize your application.
- Adjustable strikes feature either Kason's micrometer or micro-turn strike for hairline fine adjustments
- Interchangeable for right or left-opening doors.
- Standard padlocking feature.

## SPECIFICATIONS

**MATERIAL:**  
High pressure die-cast zinc body; solid brass tongue.

**FINISH:**  
Polished chrome.

**OFFSETS:**  
See ordering information.

**MOUNTING:**  
Drilled and countersunk for No. 8 (4.0 mm) screws.

**PACKAGING:**  
20 per carton complete with strikes.

**WEIGHT:**  
Approx. 14 lb. (6.4 kg) per carton.

Model No.	Item	Offset			
10930A00004	Latch Adjustable Strike A	Flush to 3/8" (0-9.5mm)			
10930B00004	Latch Stationary Strike B	1/4" (6-4mm)			
10930C00004	Latch 3-hole microturn Strike C	3/4" to 1-1/4" (19.9-31.8mm)			
10930D00004	Latch 3-hole microturn Strike D	7/8" to 1-1/4" (22.2-31.8mm)			
10930E00004	Latch 2-hole microturn Strike E	7/8" to 1-1/4" (22.2-31.8mm)			
10930F00004	Latch 2-hole microturn Strike F	3/4" to 1-1/4" (19.9-31.8mm)			

930 latch body and strikes may be ordered separately; for complete model numbers, consult a Kason representative.



**ITEM # 931**

## 931 TRIGGER ACTION

- Enlarged version of popular Kason No. 930, for large reach-in doors
- Includes patented micrometer strike for hairline-fine adjustments

## SPECIFICATIONS

**MATERIAL:**  
High pressure die-cast zinc body; brass tongue and strike insert

**FINISH:**  
Polished chrome

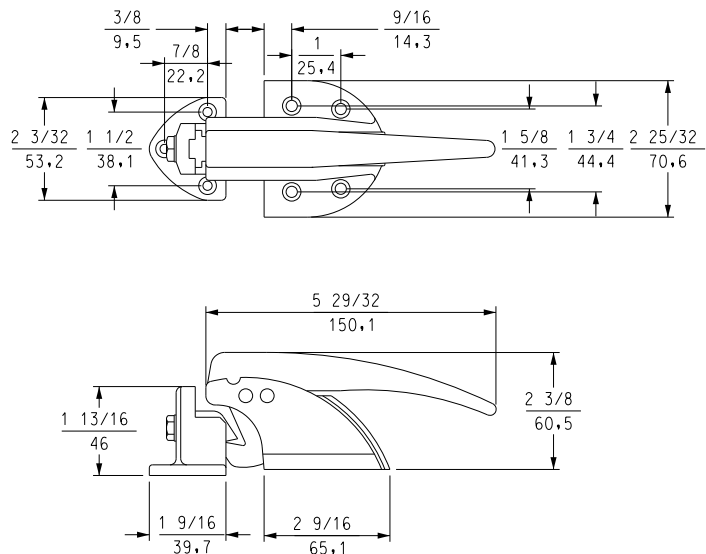
**OFFSETS:**  
See ordering information

**MOUNTING:**  
Drilled and countersunk for No. 10 (5.0 mm) screws

**PACKAGING:**  
6 per carton complete with strikes

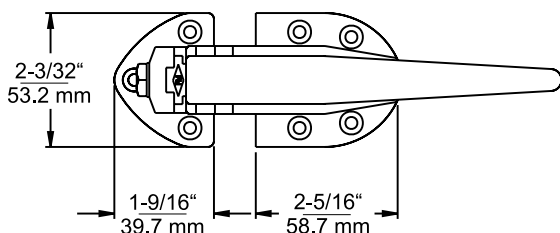
**WEIGHT:**  
Approx. 13 lb. (5.9 kg) per carton

Model No.	Item	Handle
10931000004	Latch	Flush to 1/8" (0 - 3.2 mm)
10931000008	Latch	7/8" to 1-1/8" (22.2 - 28.6 mm)
10931000012	Latch	1-1/8" to 1-3/8" (28.6 - 34.9 mm)

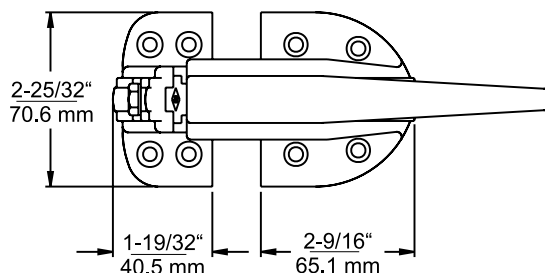




**ITEM # 930X**



**ITEM # 931X**



## EXPLOSION VENTING LATCHES

- Factory Mutual test rated release force
- Installs on right or left-opening door

## SPECIFICATIONS

**MATERIAL:**  
High pressure die-cast zinc body,  
handle and strike housing; extruded  
brass tongue and strike insert

**FINISH:**  
Polished chrome

**OFFSETS:**  
See ordering  
information

### 930X TRIGGER ACTION LATCH

- Factory Mutual test rated to release at force of 91.5 lb. (407 N)



#### SPECIFICATIONS

**PACKAGING:** 10 per carton  
**WEIGHT:** Approx. 13.8 lb. (6.2 kg) per carton  
**MOUNTING:** Drilled and countersunk for No. 8 (4.0 mm) screws.

Model No.	Item	Offset
10930AX0004	Venting Latch	Flush to 1/4" (0 - 6.4mm)
10930CX0004	Venting Latch	7/8 to 1-1/8" (22.6 - 28.6mm)

### 931X TRIGGER ACTION LATCH

- Factory Mutual test rated to release at force of 42 lb. (187 N)



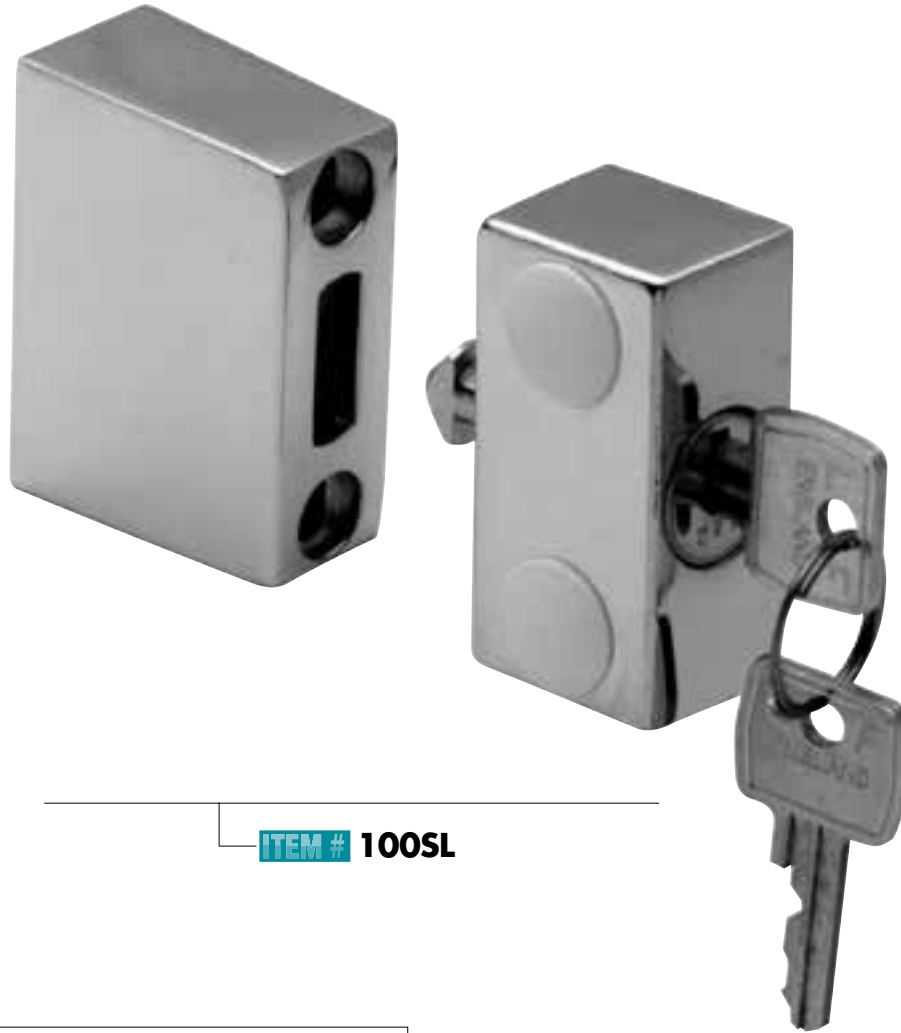
#### SPECIFICATIONS

**PACKAGING:** 6 per carton  
**WEIGHT:** Approx. 12 lb. (5.4 kg) per carton  
**MOUNTING:** Drilled and countersunk for No. 10 (5.0 mm) screws

Model No.	Item	Offset
10931AX0004	Venting Latch	Flush to 1/4" (0 - 6.4mm)
10931CX0004	Venting Latch	7/8 to 1-1/8" (22.6 - 28.6mm)
10931HX0004	Venting Latch	1-1/8" to 1-3/8" (28.6 - 34.9mm)

**WARNING:** Explosion venting latches are intended to release at designated pressures to protect the enclosures on which they are mounted. Users must determine safe pressure levels for their specific applications. Because installations and environmental conditions vary, regular maintenance and latch function checks are necessary to assure proper operation.

# KASON SURFACE MOUNT LATCHES



**ITEM # 100SL**

## 100SL SECURITY LOCKS

- 4-disc cylinder for extra security
- Durable, highly polished chrome finish
- Easy to install at factory or in field
- Vertical and horizontal adjustments
- Compatible with glass and most other doors
- Black plastic caps included
- Improved to be more forgiving of misalignment

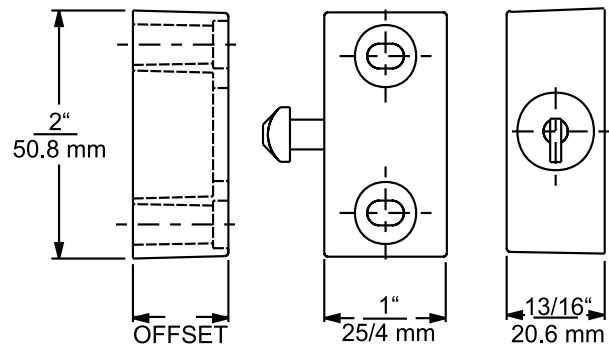
## SPECIFICATIONS

**DESCRIPTION:**  
Highly polished  
chrome plated  
Zamak body with  
stainless steel  
faced cylinder

**MOUNTING:**  
Drilled and  
countersunk for No.  
8 (4.0 mm) screws.  
Two finishing plugs  
provided

**PACKAGING/WEIGHT:**  
See ordering information

Model No.	Item	Strike Height	Quantity/ Carton	Weight/ Carton
10100SL0004277	Security Lock	25/32" (20mm)	100	41 lb. (18kg)



© 2020 Kason Industries, Inc.  
0220 LIT 001





ITEM # 812



## 812 CAM ACTION LATCH

- Engineered specifically for heated cabinets where high gasket compression is required.
- Positive cam action maintains tight seal and allows easy opening under varying temperatures.
- Easy-grip handle stays cool with hi-temp vinyl insulating sleeve.
- Multiple offsets available

### SPECIFICATIONS

**MATERIAL:**  
Cast ZA12 alloy  
handle, strike and base;  
stainless steel pin

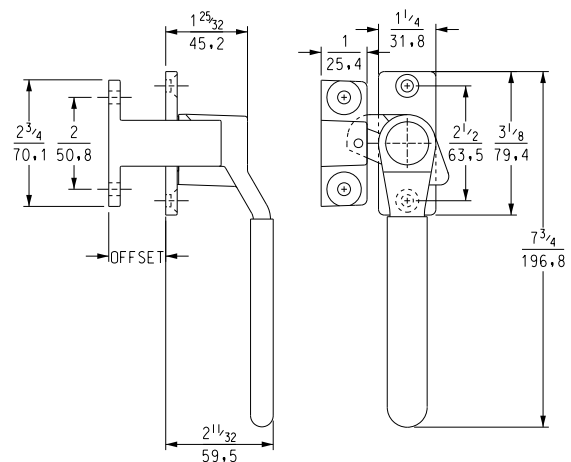
**FINISH:**  
Polished chrome

**OFFSETS:**  
Flush, 1.24" (31.5 mm),  
1.84" (46.7 mm)

**MOUNTING:**  
Handle drilled and countersunk  
and strike drilled for 1/4"  
(6.0 mm) screws

**PACKAGING:**  
12 per carton

**WEIGHT:**  
See ordering  
information



Model No.	Item	Offset	Weight/Carton
10812000002	Latch	1-27/32" (46.8mm)	21 lb. (9.5kg)
10812000004	Latch	Flush (0.00mm)	18.3 lb. (8.3kg)

# KASON SHELVING HARDWARE

## 60 PILASTER

- Adjustable shelf support for coolers, freezers, dry storage
- Sturdy and sanitary
- Accepts 66, 67 and 68 shelf clips (See below)

### MOUNTING:

Drilled and countersunk for No. 5 (3.0 mm) screws or pop rivets

## 65 PILASTER

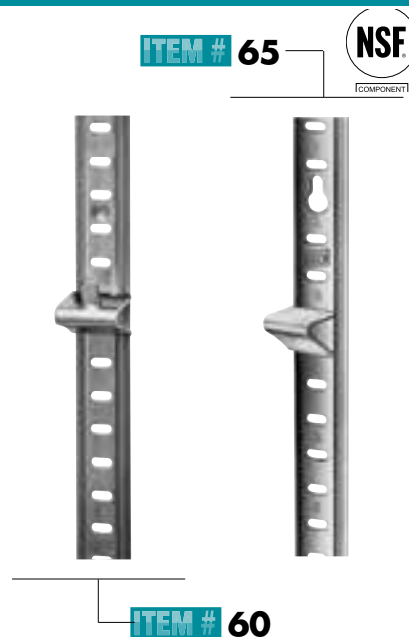
- Sanitary standard for removable shelving
- Keyhole slots accept quick-mounting 65MS studs.
- Accepts 66, 67 and 68 shelf clips (See below)

### MOUNTING:

Mount with No. 65MS studs and pop rivets or No. 10 (5.0 mm) screws.  
Custom sizes available. Minimum order quantities apply.

## SPECIFICATIONS

MATERIAL: Aluminum or stainless steel	WIDTH: 13/16" (20.6 mm)	LENGTH: See ordering information	ADJUSTMENTS: Slotted for 1/2"(12.7 mm) adjustments
---	----------------------------	--	--



Length	60 Aluminum Model No.	65 Aluminum Model No.	Weight/ Carton	60 Stainless Steel Model No.	65 Stainless Steel Model No.	Weight/ Carton
36" (91.4 cm)	10060007036	10065007036	15 lbs. (6.8 kg)	10060009036	10065009036	29 lbs. (13.2 kg)
48" (122.0 cm)	10060007048	10065007048	20 lbs. (9.1 kg)	10060009048	10065009048	38 lbs. (17.2 kg)
60" (152.4 cm)	10060007060	10065007060	25 lbs. (11.3 kg)	10060009060	10065009060	47 lbs. (21.3 kg)
72" (189.9 cm)	10060007072	10065007072	30 lbs. (13.6 kg)	10060009072	10065009072	57 lbs. (25.9 kg)
144" (365.8 cm)	10060007144	10065007144	60 lbs. (27.2 kg)	10060009144	10065009144	104 lbs. (47.2 kg)

Packaging: 100 per Carton

## 65MS MOUNTING STUD

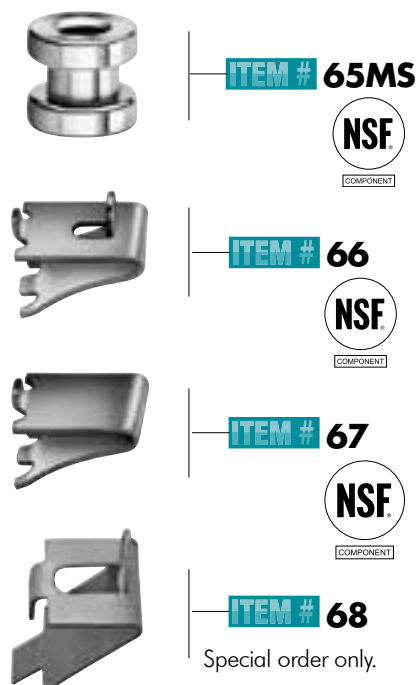
Brass mounting stud for use with No. 65 pilaster. Fasten with 1/8" (3.2 mm) pop rivet or No. 5 (3.0 mm) screws.

## SHELF SUPPORTS

Removable shelving supports for use with Kason 13/16" (20.6 mm) wide pilasters. Mount quickly and hold securely. Supports designed to hold 75lb. (34kg) each, assuming pilaster are mounted with adequate support structure.

Model No.	Item	Qty/ Carton	Weight/Carton
10065000000	Nickel Plated Brass Mounting Stud for 65 Pilaster	10,000	28lb. (12.7 kg)
10066000004	Shelf Support, Kasonized Steel	1000	38 lb. (15.4kg)
10066000008	Shelf Support, Stainless Steel	1000	38 lb. (15.4kg)
10067000004	Shelf Support, Kasonized Steel	1000	38 lb. (15.4kg)
10067000008	Shelf Support, Stainless Steel	1000	38 lb. (15.4kg)
10068000008	Shelf Support, Stainless Steel	1000	38 lb. (15.4kg)

Pop rivets for use with No. 65 mounting stud available in Foodservice Section.



ITEM # 573

ITEM # 5001



ITEM # 578

ITEM # 382

## 382 CLASSIC PULL

<b>DESCRIPTION:</b> High pressure die-cast zinc with polished chrome finish	<b>MOUNTING HOLES:</b> 4 1/2" (114.3 mm) O.C. Drilled and countersunk for No. 8 (4.0 mm) screws	<b>PACKAGING:</b> 100 per carton
		<b>WEIGHT:</b> 27 lb. (12.3 kg)

## 5001 HEAVY DUTY PULL

<b>DESCRIPTION:</b> High pressure die-cast zinc with polished chrome finish	<b>MOUNTING HOLES:</b> Drilled and counter sunk for 1/4" (6.0 mm) screws	<b>PACKAGING:</b> 50 per carton
		<b>WEIGHT:</b> 46 lb. (20.7 kg)

## 573 OFFSET PULL

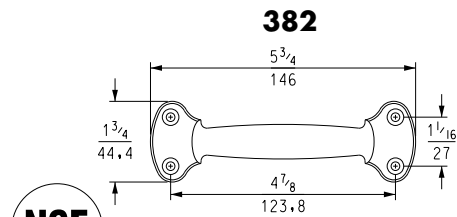
<b>DESCRIPTION:</b> High pressure die-cast zinc with polished chrome finish	<b>MOUNTING HOLES:</b> 5" (127.0 mm) O.C. Drilled and tapped for 1/4" - 20 screws	<b>PACKAGING:</b> 144 per carton
		<b>WEIGHT:</b> 57 lb. (25.9 kg)

## 578 OFFSET PULL

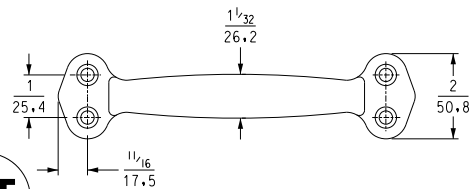
Special order only. Minimum quantity applies.

<b>DESCRIPTION:</b> High pressure die-cast zinc with polished chrome finish	<b>MOUNTING HOLES:</b> 9-3/4" (247.7 mm) O.C. Drilled and tapped for 5/16" - 18 screws	<b>PACKAGING:</b> 50 per carton
		<b>WEIGHT:</b> 62 lb. (29.0 kg)

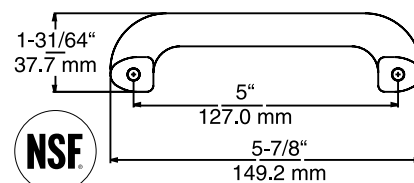
Model No.	Item
10382000004	Classic Pull Handle
15001SP0004	HD Pull Handle
10573000004	Offset Pull Handle
10578000004	Large Offset Pull Handle



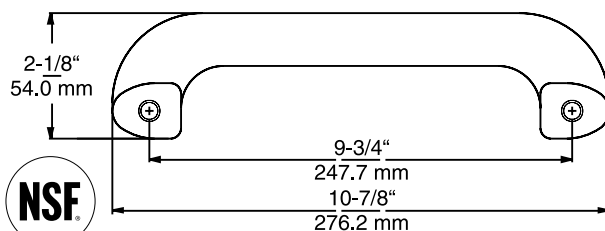
5001



573



578

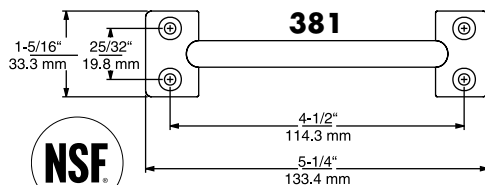




**ITEM # 381**

**ITEM # 574**

**ITEM # 576**



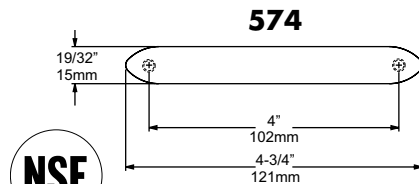
## 381 DIE-CAST HANDLE

**DESCRIPTION:**  
High pressure die-cast zinc with polished chrome finish

**MOUNTING HOLES:**  
Drilled and countersunk for No. 8 (4.0 mm) screws

**PACKAGING:**  
100 per carton

**WEIGHT:**  
23 lb.  
(10.4 kg)



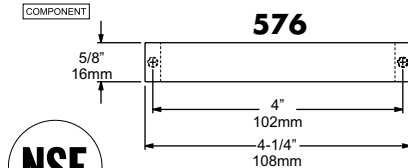
## 574 DIE-CAST HANDLE

**DESCRIPTION:**  
High pressure die-cast zinc with polished chrome finish

**MOUNTING HOLES:**  
Tapped for No.10-24 screws or thumbscrews

**PACKAGING:**  
50 per carton

**WEIGHT:**  
7 lb.  
(3.2 kg)



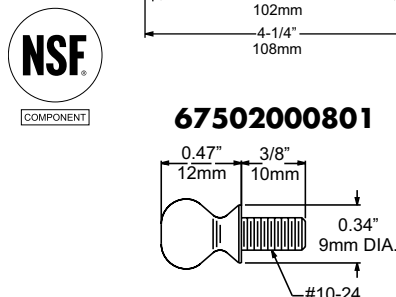
## 576 STAINLESS STEEL HANDLE

**DESCRIPTION:**  
1/4" (6.0 mm) stainless steel with satin finish

**MOUNTING HOLES:**  
Tapped for No.8 screws

**PACKAGING:**  
50 per carton

**WEIGHT:**  
15 lb.  
(6.8 kg)



## 7502000801 THUMBSCREWS

**DESCRIPTION:**  
No. 10-24 x 3/8" (9.5 mm), stainless steel, to meet NSF requirements for mounting handles or pulls without tools

**PACKAGING:**  
1000 per carton

**WEIGHT:**  
8 lb.  
(3.6 kg)

Model No.	Item
10381000008	Classic Die-cast Pull Handle
10574000004	Die-cast Pull Handle
10575000004	Aluminum Pull Handle (Special Order)
60576000004	Stainless Steel Pull Handle 4"
60576000005	Stainless Steel Pull Handle 5"
67502000801	Stainless Steel Thumbscrew

## 7321 STAINLESS STEEL HANDLES

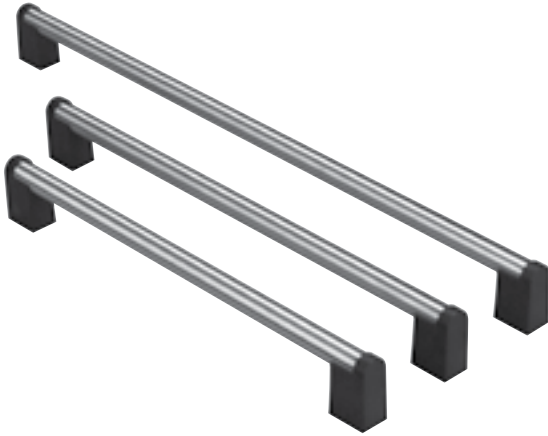
- Heavy duty, stainless steel tubing.
- Insulating standoffs are heat-resistant to 400°F (204.4°C).
- Through-mounting assures maximum strength.
- Three standard sizes; custom lengths available from 6-in. minimum
- Easy-grip, streamlined design

### SPECIFICATIONS

**MATERIAL:**  
7/8" (22.2mm) stainless steel tubing;  
glass reinforced, polyester resin  
insulators

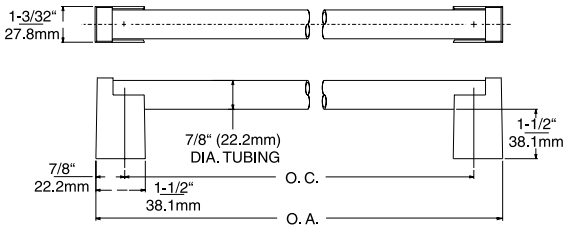
**MOUNTING:**  
1/4-20 threaded  
screw holes

**FINISH:**  
No. 4 satin



**ITEM # 7321**

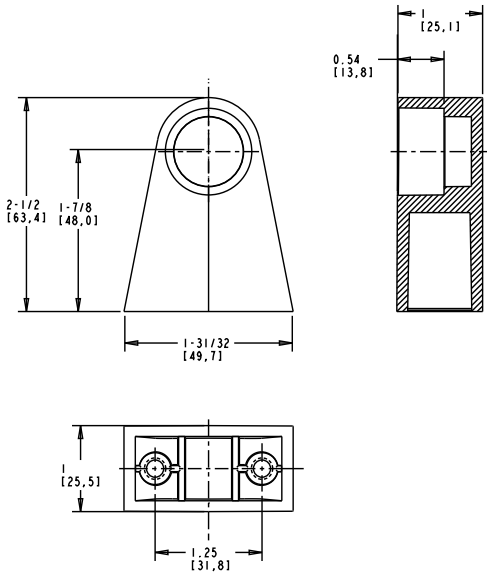
Model No.	Item	Quantity/ Carton	Approximate Weight/Carton
673210000041637	Handle, 17-7/8" (454mm) O.A., 16- 3/8" (416mm) O.C.	24	23 lb. (10.4kg)
673210000041887	Handle, 20-3/8" (518mm) O.A., 18- 7/8" (480mm) O.C.	24	26 lb. (11.8kg)
673210000042637	Handle, 27-7/8" (708mm) O.A., 26- 3/8" (670mm) O.C.	24	35 lb. (15.9kg)



## 7321 HANDLE ENDS

- For 1" (25mm) O.D. tubing
- Each support is tapped to receive (2) 1/4-20 screw
- Die-cast aluminum

Model No.	Item
67321000074	Handle Ends



# KASON DOOR & DRAWER PULLS



## 915 DECORATOR HANDLES

- Heat resistant, heavy duty construction
- Black vinyl insert conceals screw holes
- Styling complements Kason hinges
- Front-mount and dual-mount models

### SPECIFICATIONS

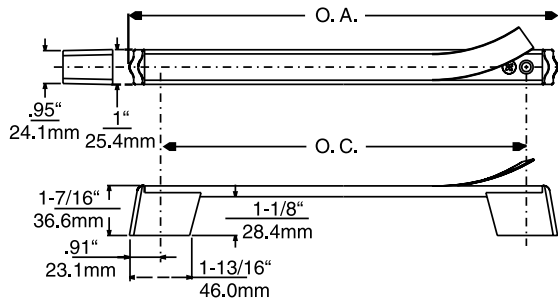
#### MATERIAL:

Aluminum handle with heat-resistant nylon bases and flexible vinyl insert. Dual-mount model has threaded bushings for rear mounting.

#### MOUNTING:

Accepts No. 10-32 x 1-3/4" flat head screws and No.10-32 hex jam nut.

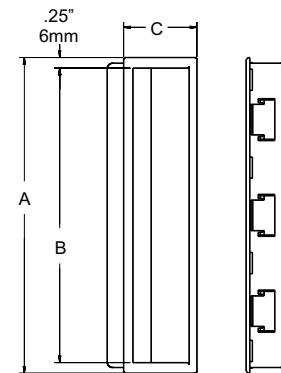
### ITEM # 915 HANDLES



Model No.	Item	Qty/ Carton	Approximate Weight/ Carton
60915000004	Front Mount Handle, 12-7/8" (327.0mm) O.A., 10-5/8" (269.9mm) O.C.	50	23 lb. (10.4 kg)
60915000005	Dual Mount Handle, 12-7/8" (327.0mm) O.A., 10-5/8" (269.9mm) O.C.	50	25 lb. (11.4 kg)
60915000006	Front Mount Handle, 7-13/16" (198.4mm) O.A., 6" (127.0mm) O.C.	50	17 lb. (7.7kg)
60915000004	Front Mount Handle, 12-7/8" (327.0mm) O.A., 10-5/8" (269.9mm) O.C.	50	23 lb. (10.4 kg)
60915000005	Dual Mount Handle, 12-7/8" (327.0mm) O.A., 10-5/8" (269.9mm) O.C.	50	25 lb. (11.4 kg)
60915000006	Front Mount Handle, 7-13/16" (198.4mm) O.A., 6" (127.0mm) O.C.	50	17 lb. (7.7kg)



### ITEM # 905 SERIES



## 905 RECESSED PULL HANDLE

- Easy-grip handle mounts within door panel.
- Fully recessed pull won't catch or snag.

### SPECIFICATIONS

#### MATERIAL:

Black ABS plastic.

#### PANEL THICKNESS:

For nominal 22 gauge.

Model No.	Item	Dim. A	Dim. B	Dim. C	Cutout
60905000004	7" Recessed Pull	7.45" (189mm)	6.95" (189mm)	1.7" (189mm)	7.235 x 1.530 (183.8mm x 38.9mm) in .030" Panel Thickness
60905000052	5" Recessed Pull	5.44" (138mm)	5.01" (189mm)	1.4" (36mm)	5.20 x 1.210 (132mm x 30.7mm) in .055" to .070" Panel Thickness
60905000031	3" Recessed Pull	3.61" (92mm)	3.26" (189mm)	1.4" (36mm)	3.45 x 1.210 (87.6mm x 30.7mm) in .040" in .055" Panel Thickness

Ask about other available sizes. Request packaging and weight.

## DESIGNER HANDLES

- Classic pull handles in two sizes
- Front or rear-mounting models available
- Solid die-cast zinc construction for strength and endurance
- Easily interchangeable with other popular handles

### 906 COMPACT REAR MOUNT HANDLE

**PACKAGING:** 50 per carton **WEIGHT:** 28 lb. (12.7 kg) per carton

### 907 COMPACT FRONT MOUNT HANDLE

**PACKAGING:** 50 per carton. **WEIGHT:** 25 lb. (11.3 kg) per carton

### 910 CUSTOMIZER REAR MOUNT HANDLE

**PACKAGING:** 24 per carton **WEIGHT:** 24 lb. (10.9 kg) per carton

### 911 CUSTOMIZER FRONT MOUNT HANDLE

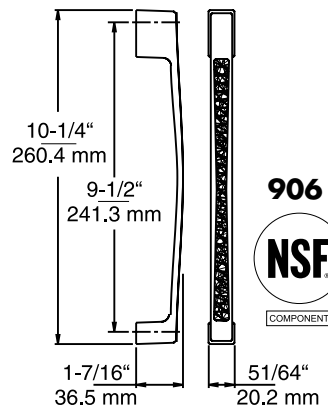
**PACKAGING:** 24 per carton. **WEIGHT:** 24 lb. (10.9 kg) per carton.

## SPECIFICATIONS

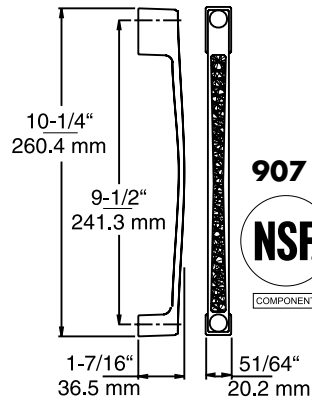
**MATERIAL:** High pressure die-cast zinc  
**FINISH:** Polished chrome

**MOUNTING HOLES:** Rear mounting holes tapped for 1/4"-20 screws. Front mounting holes drilled for No. 10 (5.0 mm) screws.

Model No.	Item
10906E00004	Rear Mounted Handle
10907005000	Front Mounted Handle
10910000004	Rear Mounted Handle
10911000004	Front Mounted Handle

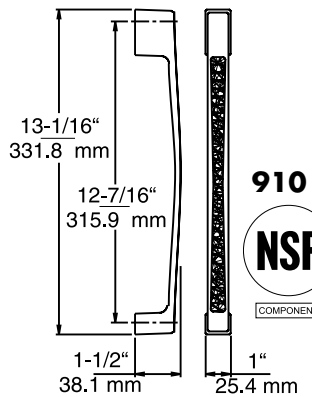
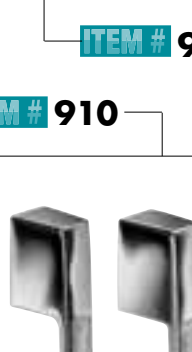


ITEM # 906



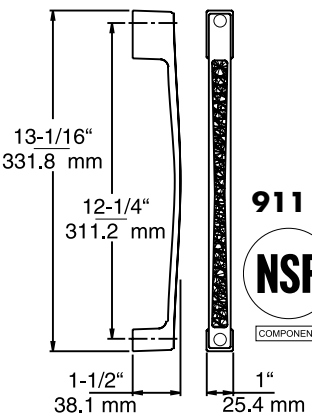
907

ITEM # 907



910

ITEM # 910



911

ITEM # 911



## DESIGNER PULL HANDLES

- Elegant sculpted handles are highly polished chrome
- Solid die-cast zinc construction for strength and endurance
- Easily interchanges with popular handles

## 902 HEAVY DUTY HANDLE

Snag-resistant tapered design deflects blows and bumps

### SPECIFICATIONS

<b>MATERIAL:</b> High pressure die-cast zinc	<b>MOUNTING HOLES:</b> Rear mounting holes tapped for 1/4"-20 screws	<b>PACKAGING:</b> 20 per carton
<b>FINISH:</b> Polished chrome or satin chrome	<b>WEIGHT:</b> 24 lb. (10.9 kg) per carton	

## 912 HANDLE

- Mounts front or rear. Silver or black decal inserts are available to cover front mounting holes.
- Model 912-425C available for back mount only; has smooth front and requires no decals.

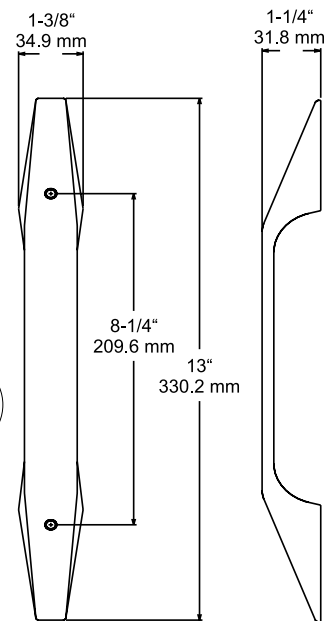
### SPECIFICATIONS

<b>PACKAGING:</b> 20 per carton	<b>WEIGHT:</b> 14 lb. (6.8 kg) per carton
------------------------------------	--

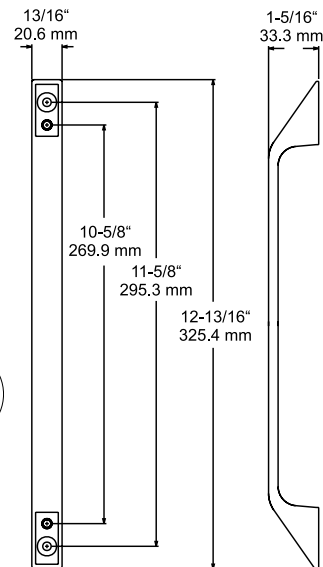
Model No.	Item
10902000004	HD Pull Handle, Polished Chrome
10902000008	HD Pull Handle, Satin Chrome
10912000004	Pull Handle, Polished Chrome
10912000002	Silver Decal for 912
10912000003	Black Decal for 912 (Special Order)
1091200000425C	Handle Back Mount, Polished Chrome



ITEM # 902



ITEM # 912





## 877 PADLOCKING PULL HANDLE

7" threaded thru-rod accepts  
No. 893 inside release handle.

## 878 WEDGE TYPE

7" threaded thru-rod accepts  
No. 893 inside release handle.

## 879 PADLOCKING PULL HANDLE STUB

Similar to No. 877 without  
threaded thru-rod. Offsets from  
flush to 1/4" (6.4 mm) have  
5/8" (15.9 mm) protruding boss.

## 879H WEDGE TYPE

Similar to No. 878 without  
threaded thru-rod. Offsets from  
flush to 1/4" (6.4 mm) have  
5/8" (15.9 mm) protruding boss.

## SPECIFICATIONS

**MATERIAL/FINISH:**  
Chrome plated brass or Kasonized iron  
lever handle and keeper; high pressure  
die-cast zinc offset blocks and pull  
handle

**Offsets:**  
See ordering information

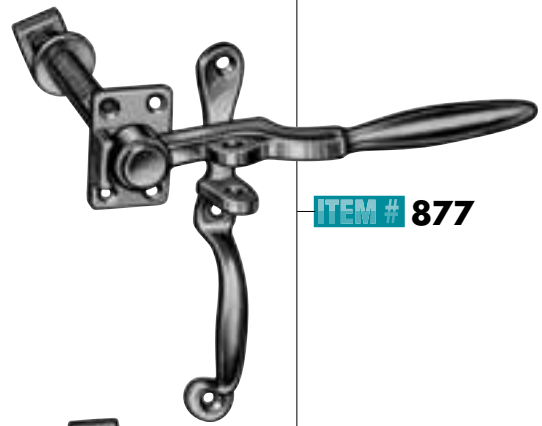
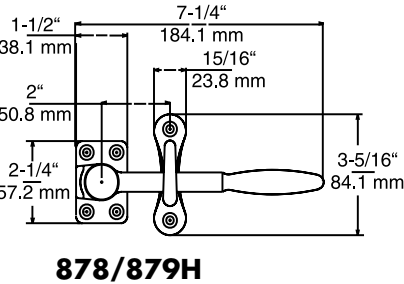
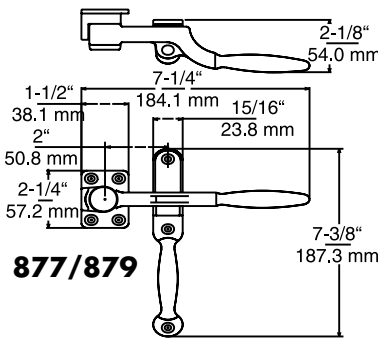
**Mounting:**  
Drilled and countersunk for No. 10  
(5.0 mm) screws. Rod for 877 and  
878: 9/16" (14.3 mm) diameter

## 893 INSIDE RELEASE HANDLE

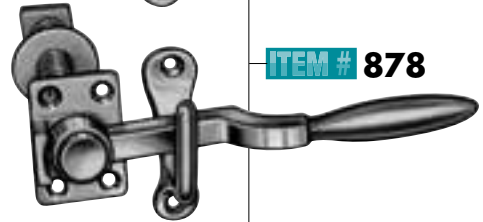
For use with No. 877 and 878  
levers.

## SPECIFICATIONS

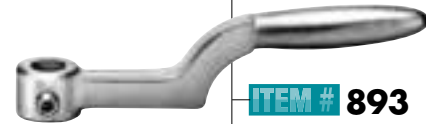
**MATERIAL/FINISH:**  
Zinc plate



ITEM # 877



ITEM # 878



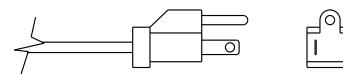
ITEM # 893

Model No.	Item	Offset	Finish	Qty/ Carton	Weight/ Carton
10877000004	Pull Handle Iron Lever	Flush	Kasonized	12	24.6 lb. (11.2 kg)
10877000028	Pull Handle Iron Lever	1-1/8" (28.6mm)	Kasonized	12	24.6 lb. (11.2 kg)
10877000032	Pull Handle Brass Lever	Flush	Chrome	12	24.6 lb. (11.2 kg)
10877000056	Pull Handle Brass Lever	1-1/8" (28.6mm)	Chrome	12	24.6 lb. (11.2 kg)
10878000004	Wedge Type Iron Lever	Flush	Kasonized	12	22 lb. (10.0 kg)
10878000028	Wedge Type Iron Lever	1-1/8" (28.6mm)	Kasonized	12	22 lb. (10.0 kg)
10878000032	Wedge Type Brass Lever	Flush	Chrome	12	22 lb. (10.0 kg)
10878000056	Wedge Type Brass Lever	1-1/8" (28.6mm)	Chrome	12	22 lb. (10.0 kg)
10879000004	Pull Handle Iron Stub	Flush	Kasonized	6	12.3 lb. (5.6 kg)
10879000028	Pull Handle Iron Stub	1-1/8" (28.6mm)	Kasonized	6	12.3 lb. (5.6 kg)
10879000032	Pull Handle Brass Stub	Flush	Chrome	6	12.3 lb. (5.6 kg)
10879000056	Pull Handle Brass Stub	1-1/8" (28.6mm)	Chrome	6	12.3 lb. (5.6 kg)
10879H00004	Wedge Type Iron Stub	Flush	Kasonized	6	11 lb. (5.0 kg)
10879H00028	Wedge Type Iron Stub	1-1/8" (28.6mm)	Kasonized	6	11 lb. (5.0 kg)
10879H00032	Wedge Type Brass Stub	Flush	Chrome	6	11 lb. (5.0 kg)
10879H00056	Wedge Type Brass Stub	1-1/8" (28.6mm)	Chrome	6	11 lb. (5.0 kg)
10893000008	Iron Inside Release for 877 & 878		Kasonized	30	20.13 lb. (9.13 kg)

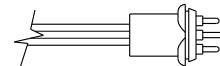
# KASON ENERGY SAVING EVAPORATORS



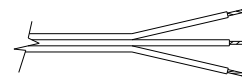
**STANDARD  
PLUG**



**EMF  
PLUG**



**PIGTAILS  
PLUG**



## 660 SERIES ENERGY SAVING CONDENSATE EVAPORATORS

- Designed for longer life and energy savings.
- Engineered for top efficiency at low energy cost.
- Thermostatically controlled, solid state heater provides reliable operation.
- Features one-piece pan of corrosion resistant #360 cast aluminum that provides long term performance and requires less frequent cleaning.
- Cuts heat loss by directing more heat to the wetted pan areas and less to the pan exterior.
- Thermostatically controlled heater lowers wattage automatically to conserve energy when the pan is empty.
- Strategic placement of the heating element extends heater life.

## OPTIONAL WALL MOUNTED BRACKET FOR 660 EVAPORATORS

- Bracket mounts to back of cabinet.
- Pan snaps in place.

## HIGH EFFICIENCY ENERGY SAVING EVAPORATORS

- High-efficiency, 225-watt models achieve up to 90% of the evaporation of a typical high wattage unit, using 25% less energy.

## SPECIFICATIONS

**MATERIAL:**  
Die-cast #360 Series  
aluminum pan; spring  
wire legs

**FINISH:**  
Natural

**UL LISTING:**  
File No. SA11890

**POWER SUPPLY AND  
CONNECTOR:**  
See ordering  
information, below

**SIZE:**  
4-3/4" x 12-1/2"  
x 2-7/8" (120mm  
x 317mm x 73mm)

**VOLUME:**  
50 fluid oz. (1479ml)

**PACKAGING:**  
1 per carton

**WEIGHT:**  
Consult Kason  
Representative

Model No.	Description	Cord Length & Plug Type	Evaporation Rate/Hour	Qty/Carton
10660000004	120VAC, 160W Evaporator	18" (457mm) Cord with Pigtails Plug	4.0 oz (118 ml)	1
10660000006	240VAC, 160W Evaporator	18" (457mm) Cord with Pigtails Plug	4.0 oz (118 ml)	1
106600000066	240VAC, 160W Evaporator	72" (1829mm) Cord with Pigtails Plug	4.0 oz (118 ml)	1
10660000006B	240VAC, 160W Evaporator	130" (3302mm) Cord with Pigtails Plug	4.0 oz (118 ml)	1
10660000006E	240VAC, 160W Evaporator	24" (610mm) Cord with EMF Plug	4.0 oz (118 ml)	1
10660000006G	240VAC, 160W Evaporator	127" (3226mm) Cord with Pigtails Plug	4.0 oz (118 ml)	1
10660000008	120VAC, 160W Evaporator	72" (1829mm) Cord with Standard Plug	4.0 oz (118 ml)	1
1066000000836	120VAC, 160W Evaporator	36" (914mm) Cord with Standard Plug	4.0 oz (118 ml)	1
10660000008A	120VAC, 160W Evaporator	96" (2438mm) Cord with Standard Plug	4.0 oz (118 ml)	1
10660000008B	120VAC, 160W Evaporator	132" (3353mm) Cord with Standard Plug	4.0 oz (118 ml)	1
10660000008E	120VAC, 160W Evaporator	24" (610mm) Cord with EMF Plug	4.0 oz (118 ml)	1
10660000008G	120VAC, 160W Evaporator	36" (914mm) Cord with Standard Plug	4.0 oz (118 ml)	1
106600000036	240VAC, 160W Evaporator	72" (1829mm) Cord with Pigtails Plug	5.3 oz (157 ml)	1
106600000038	120VAC, 225W Evaporator	72" (1829mm) Cord with Standard Plug	5.3 oz (157 ml)	1
106600000038A	120VAC, 225W Evaporator	96" (2438mm) Cord with Standard Plug	5.3 oz (157 ml)	1
106600000038T	120VAC, 225W Evaporator	72" (1829mm) Cord with Pigtails Plug	5.3 oz (157 ml)	1
106600000064	Wall Mounted Bracket			10

Special cords to order. Bulk packaging available.



## 1805 SERIES LIGHT FIXTURE

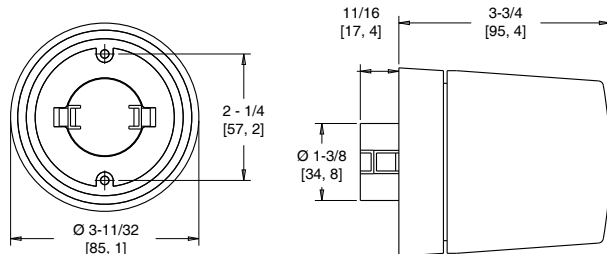
- Specifically designed for reach-in refrigerators and freezers.
- UL recognized component in US and Canada.
- NSF listed
- Accommodates a 40 watt appliance bulb.
- Drilled for #6 (3.5 mm) mounting screws.
- Cast aluminum alloy body, brushed finish
- Impact resistant clear polycarbonate globe
- Snap-in porcelain socket with 10" long wire leads

## SPECIFICATIONS

**MATERIAL:**  
Cast aluminum alloy, impact  
resistant clear polycarbonate  
globe

**FINISH:**  
Brushed

Model No.	Description	Voltage
11805000000	Reach-In Light Fixture	120VAC
91805008510117	Replacement Globe	



## 1805-1 LEXAN COVER

- Protects 40 watt appliance bulb in refrigerator or freezer.
- Transparent Lexan material is non-toxic and unbreakable.
- Guard will not stain or discolor.

## SPECIFICATIONS

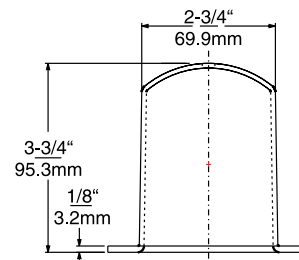
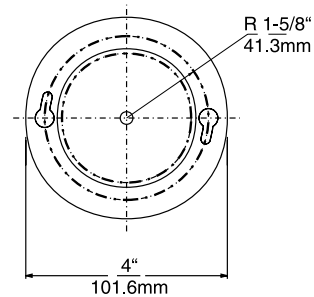
**MATERIAL:**  
Molded Lexan

**MOUNTING:**  
Drilled and slotted for  
No.8 (4.0mm) screws

**PACKAGING:**  
50 per Carton

**WEIGHT:**  
Approx. 12 lb.  
(5.5kg)

Model No.	Item
11805000001	Lexan Cover
91805008510117	Replacement Globe



## 1807LC-A10



## 1807LCR-A10



## 1807LW-A10



## 1807LWR-A10

U.S. Patent Nos. D728,151; 748,317; & D748,841

### 1807LC-A10 & 1807LW-A10 LED FIXTURES

- Low profile high impact Lexan lens with anti-glare technology
- Wall mount design directs light into aisle for better visibility of product on shelves
- Junction box with 12 cubic inches of wiring volume with ground boss provided
- Exceeds Federal Energy Act requirements
- Rated for 50,000+ hours of life
- Designed for wet location cooler/freezer environments
- Quick disconnect provided for easy replacement or upgrade at end of life
- 3 year limited warranty on the light engine

### SPECIFICATIONS

#### MATERIAL

Housing/Heatsink: Die cast aluminium

#### MOUNTING

Surface mount

#### ELECTRICAL

120 VAC only @ 50/60Hz.  
1000 Lumens  
4000K color temperature  
Watts: 12 W  
0.1 A

#### SAFETY STANDARDS

RoHS  
UL Listed US and Canada,  
File No. E333932  
NSF

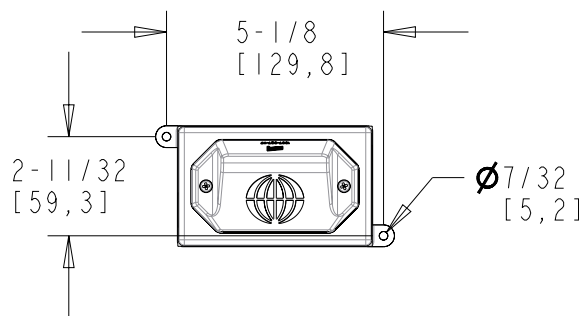
#### OPERATING TEMPERATURE

-20°F to 77°F  
(-29°C to 25°C)

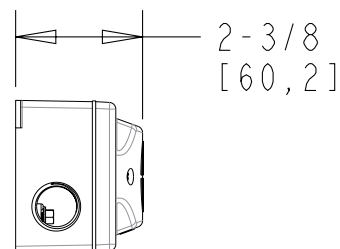
#### PRISON PACKAGE

Tamper resistant fastener kit option available.

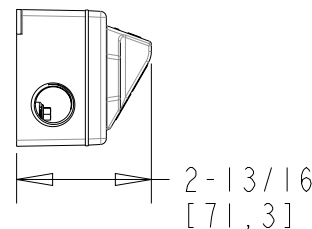
Model No.	Description	Weight	Qty/ Carton
11807LC0A10	12 Watt, 120 VAC, 4000K Domed LED Fixture	.75 lbs./unit	25 ea.
11807LW0A10	12 Watt, 120 VAC, 4000K Angled LED Fixture	.75 lbs./unit	25 ea.
11807LCRA10	12 Watt, 120 VAC, 4000K Recessed LED Fixture	.35 lbs./unit	50 ea.
11807LWRA10	12 Watt, 120 VAC, 4000K Angled Re- cessed LED Fixture	.35 lbs./unit	50 ea.
91807000357	Tamper Resistant Screw Kit		



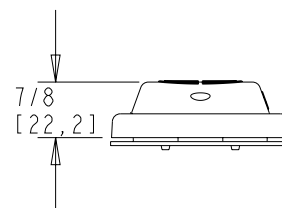
## 1807LC-A10



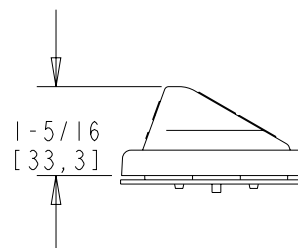
## 1807LW-A10



## 1807LCR-A10



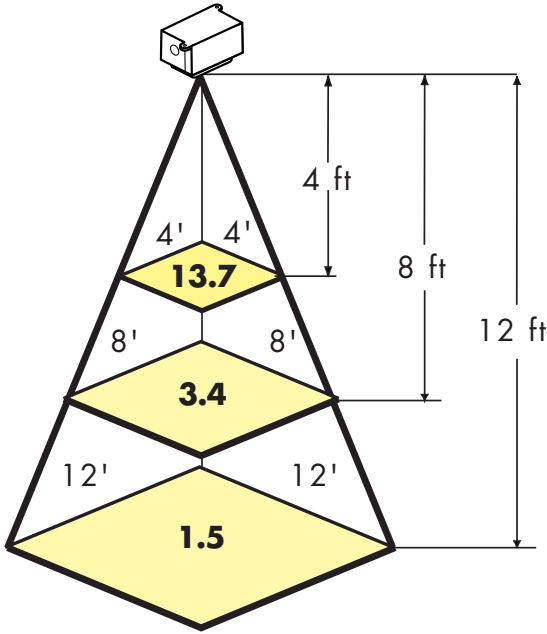
## 1807LWR-A10



1807LC-A10 & 1807LCR-A10 LED LIGHT DISTRIBUTION

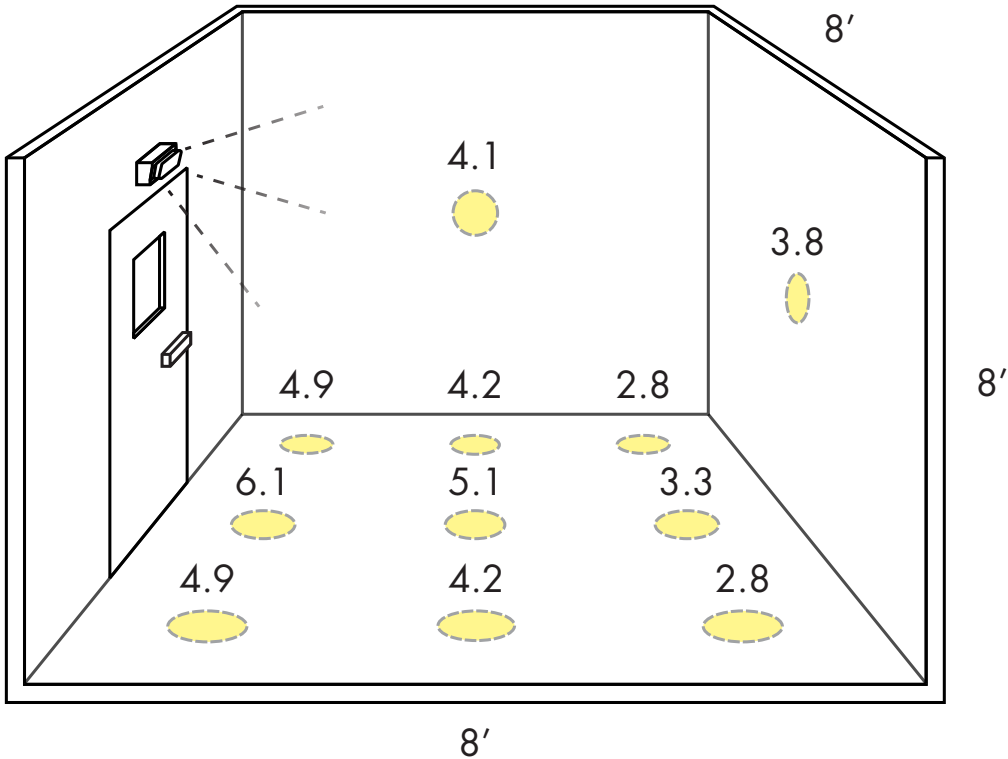
LIGHT DISTRIBUTION FOR 1807LC-A10 & 1807LW-A10

Height in Feet	Average FC for Single Fixture Over Indicated Area	
	8' x 8'	12' x 12'
5	4.9	2.8
8	3.4	2.1
9	-	1.9
12	-	1.5

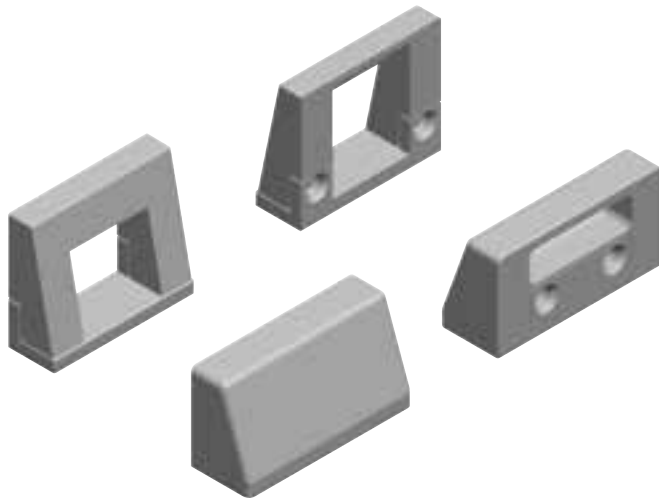


1807LW-A10 & 1807LWR-A10 LED LIGHT DISTRIBUTION

(Average FC)



ITEM # 38-08



## 38 SERIES LOCK KEEPERS FOR OVERLAPPING REACH-IN DOORS

- Simple lock keepers retain bolts on door mounted cylinder locks.
- Mount on cabinet wall
- Strong die-cast zinc construction

### SPECIFICATIONS

**MATERIAL:**  
Die-cast Zinc

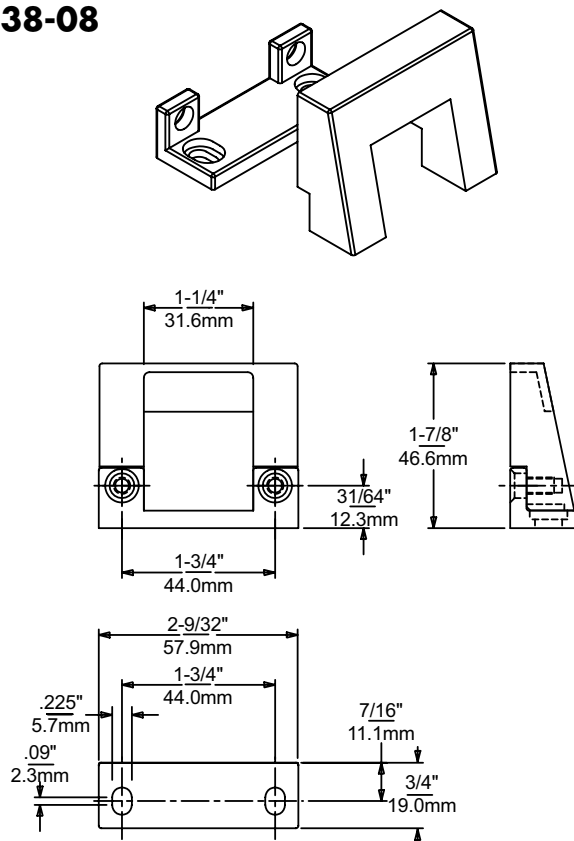
**FINISH:**  
Polished and bright  
chrome plated

**MOUNTING:**  
Surface mounts with two  
No. 10 screws. Two No.  
10-32 screws required to  
join two halves

Model No.	Item
10038000008	Narrow Lock Keeper
10038000012	Wide Lock Keeper
Packaging: 50 Sets Per Carton	

ITEM # 38-12

38-08



38-12

