

FLOOR TROUGHS & GRATING

50 Ranick Drive East • Amityville, NY 11701
800-221-5644 • info@imcteddy.com
www.imcteddy.com



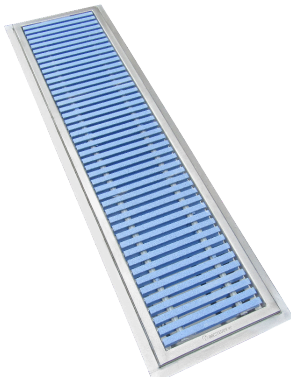
IMC TEDDY FLOOR TROUGHS

All troughs have integral coves, deep pitch and a large waste cup to assure quick and complete drainage. Recessed flange supports floor tile and provides a grout pocket. Setting frame for waterproof membrane and/or integral seepage flange with "weep" holes can be added for wet floor areas. Extension arms and intersections available for multiple equipment layout. Joints are TIG welded and leak-proof. Exposed surfaces finished brush satin. We have many stock sizes that ship out immediately for last minute projects. We can customize trough lengths, widths and shapes to meet project requirements. Our engineers can help you plan your project to achieve the most efficient drainage.

Standard line of IMC Floor Troughs use Type 304 stainless steel with an attractive brushed finish. Complete drainage of all waste water is assured by built-in integral coves, deep pitch to drain and one piece drain with a perforated basket to catch solid waste.

Where potential for floor seepage exists, an integral seepage flange with weep holes directs the water to the trough by means of a contractor provided water-proof membrane.

CFT TROUGH MODEL



Shown w/ PFG-
ADA Grating

- 16GA Type 304 Stainless Steel
- 4" Deep Overall
- Creased towards Waste Outlet
- Beehive Strainer Included
- Includes 4" OD x 3" Long Tailpiece
- Flexible Design Such as Custom Depth & Cross-Section

FT TROUGH MODEL



Shown w/
SG Grating

- 14GA Type 304 Stainless Steel
- 4" Deep Overall
- Integral Coved Corners
- Pitched ¼" per foot towards 6½" waste outlet
- Includes 4" OD x 3" Long Tailpiece
- Perforated Waste Basket Included
- Flexible Design Such as Custom Depth & Cross-Section



Contact your representatives or the factory for more information, to request a quote or to purchase our products.

ASFT TROUGH MODEL



Shown w/
SG-ADA Grating

- 14GA Type 304 Stainless Steel
- Integral Coved Corners
- Anti-spill Feature Directs Splashing Water to Inside of Trough
- 6" Deep Overall
- Integral Pitch towards 6½" Waste Outlet w/ 4" OD x 3" Long Tailpiece
- Perforated Waste Basket Included
- Use in Front of Kettles or in Areas with Large Amounts of Water

SFT TROUGH MODEL



Shown w/
PFG Grating

- 14GA Type 304 Stainless Steel
- 2" Deep Overall
- Pitched ¼" per foot towards 6½" Waste Outlet
- Includes 4" OD x 3" Long Tailpiece
- Perforated Waste Basket Included
- Use for Food Prep Facilities Where Floor Thickness Limits Trough Depth to 2"

LFT TROUGH MODEL



Shown w/
SG Grating

- 16GA Type 304 Stainless Steel
- 4" Deep Overall
- Ledgeless Design Allows up to 18% More Drainage
- Elimination of 1½" Ledge Makes the Trough Slip-Proof in Areas with Oil or Grease
- Integral Pitch towards 6½" Waste Outlet
- Includes 4" OD x 3" Long Tailpiece
- Perforated Waste Basket Included
- Use in Very Oily or Greasy Areas

FWR TROUGH MODEL



Shown w/
SQ Grating

- 16GA Type 304 Stainless Steel
- 4" Deep Overall
- 7½" width
- Integral Pitch towards 4" Waste Outlet x 3" Long Tailpiece
- Used in Front of Ice Machines, Walk-Ins, Etc.



NWR TROUGH MODEL



Shown w/
SG Banded
Grating



- 16GA Type 304 Stainless Steel
- 4" Deep Overall
- 6" Width
- Integral Pitch towards 4" Waste Outlet x 3" Long Tailpiece
- Used in Front of Ice Machines, Walk-Ins, Etc.

TRE TROUGH MODEL



Shown w/
PFG-ADA
Grating



- 14GA Type 304 Stainless Steel
- 4" Wide x 4" Deep x any Length Starting at 2ft
- 2" Diameter Drain with Perforated Strainer Located at One End or as Needed
- Bottom is Creased to 2" OD Waste Outlet with Tailpiece
- Used in Doorways, Perimeter of Rooms, in Front of Walk-Ins, etc.

FDSS TROUGH MODEL

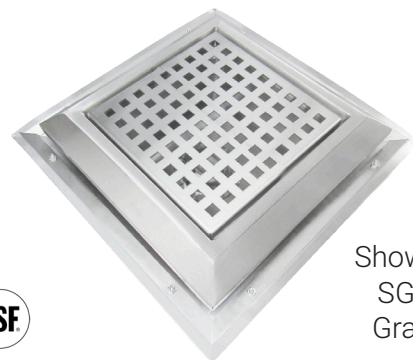


Shown w/
SG Grating



- 16GA Type 304 Stainless Steel
- 12"x12" Square
- 4" Deep Overall
- Bottom is Creased to 4" OD Waste Outlet with Tailpiece & Strainer
- Available in 10"x10" or 14"x14" sizes
- For Use Under Compartment Sinks or Wherever You Need Small Drains

IDFD TROUGH MODEL



Shown w/
SG-PR
Grating



- 16GA Type 304 Stainless Steel
- Coved Bottom
- 11½"x 11½" Square
- 6½" Deep
- 4" Drain Pipe with Strainer



FMT TROUGH MODEL



Shown w/
SQ Grating

- 16GA Type 304 Stainless Steel
- Integrated Safety Ramp & Mounting Flange
- 4" OD Waste Outlet with Tailpiece
- 1 1/4" deep
- Simple Installation by Connecting the Trough Waste Outlet through a Cored Hole to Plumber's Waste Pipe

SECURITY TROUGH MODEL



SEC-CFT-1248-PFG
Shown w/ Security
Package

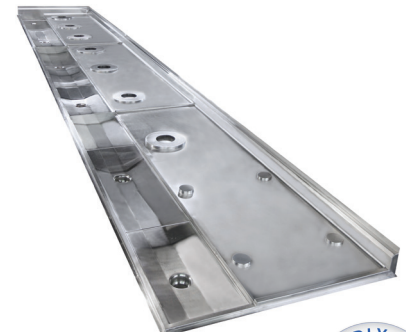
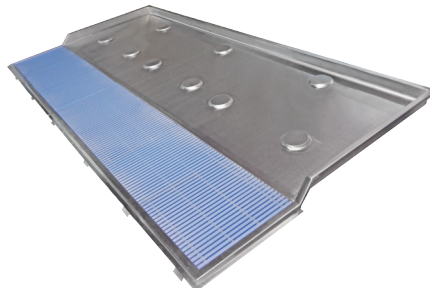


- 14GA Type 304 Stainless Steel
- 6 1/2" OD Waste Outlet with 4" OD Tailpiece.
- Perforated Waste Basket is Secured with a Tamper-Proof Screw
- Anchor Straps Secure Trough to the Floor
- Correctional Frame Secures Grating to Ledge
- Grating Slides into Frame and is Held Secure by a Special Locking Device
- Used in Correctional Buildings



FLOOR PAN & TROUGH

- 14GA Type 304 Stainless Steel
- Integral Coved Corners
- Integral Pitch towards Waste Outlet
- Includes Perforated Waste Basket
- Integral Pan Extends from Trough to Form a Pitched Base for All Equipment in the Area
- Rear of Pan is Turned up to the Wall & Side Ledges Slope to the Trough
- Continuous Stiffeners Stabilize the Pan for Extreme Temperatures & Anchor Straps Secure Unit to the Floor
- Pan is Integrally Sloped for Complete Drainage to Trough
- Protects Floor from Corrosion Water Damage & Provides a Stable Base for Heavy Equipment
- Used in Projects with Many Kettles Such as Prisons & Universities.



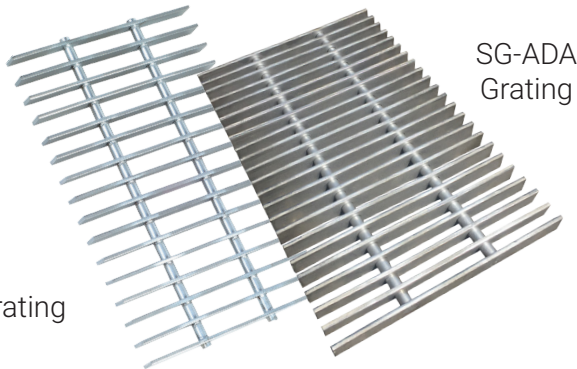
Contact your representatives or the factory for more information, to request a quote or to purchase our products.

GRATINGS

IMC Floor Trough Gratings are specially designed to provide sanitary carefree use - to permit quick, efficient and thorough cleaning. Rugged stainless steel construction, engineered to stand up under day-in and day-out abuse.

Floor Trough Gratings can be easily built to specific custom dimensions to fit the operator's special needs and requirements. Our engineers would be delighted to put their experience and knowledge to work for you in planning the most efficient use of your space

SG GRATING

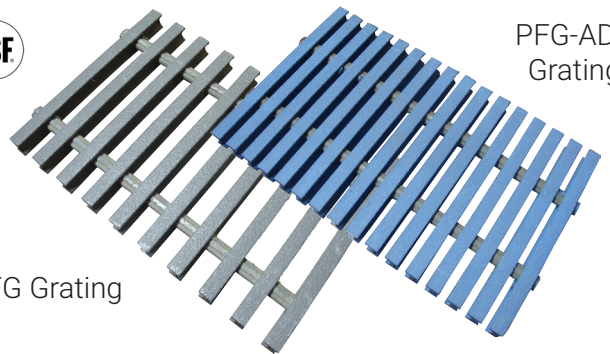


SG Grating

SG-ADA
Grating

- Subway Style Grating Constructed of 1"x 3/16" Type 304 Series Stainless Steel Bars
- Connected by (2) 1/2" Type 304 S/S Rods, (3) Rods over 15" Wide
- 13/16" Clearance between Bars - Standard Spacing
- Grating Sizes are up to 20" to Allow Cleaning in a Dish Washing Machine
- Anti-Slip Feature Available (SGAS)
- SG-ADA Compliant Grating Bars are Spaced 1/2" Apart

PFG GRATING



PFG Grating

PFG-ADA
Grating

- Pultruded Fiberglass Gratings are Corrosion Resistant, Structurally Strong, Fire Retardant, Light-Weight, Anti-Slip Surface & Low Maintenance
- Constructed of 1" Deep "I" Bars with 0.6" Wide Top Flange
- PFG Standard Gray Grating Bars are Spaced 0.9" Apart
- PFG-ADA Compliant Blue Grating Bars are Spaced 0.4" Apart.

ACCESSORIES



ST20
Scrap Tray



Basket
Strainer



BBS
Basket
Beehive
Strainer



Basket Strainer with
Pull-Out Handle &
Chain



Contact your representatives or the factory for more information, to request a quote or to purchase our products.

SQ GRATING

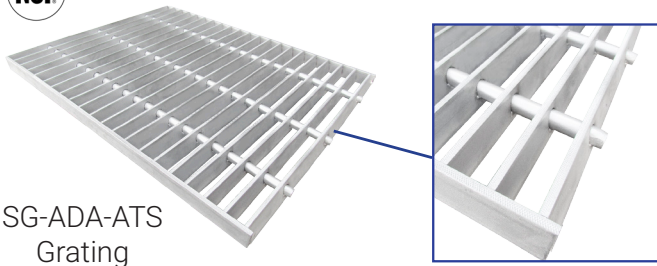


NSF

- Constructed of 12GA 1" High Stainless Steel Bars
- Connected by (2) ½" Type 304 S/S Rods, (3) Rods over 15" Wide
- Bars Are Set in Vertical Position with Banding on All (4) Sides Forming a Closed Grid
- Top Surface of Grating is Custom Serrated Providing an Anti-Slip Surface
- Grid Size may be Customized & Can Be Made ADA Compliant
- ADA Compliant Grating Bars are Spaced ½" Apart

SG-ATS GRATING

NSF



SG-ADA-ATS
Grating

- Constructed of 1" x ¾" Type 304 S/S Bars
- Connected by (2) ½" Type 304 S/S Rods, (3) Rods over 15" Wide
- 13/16" Clearance between Bars - Standard Spacing
- Bars are Angled at 90 Degrees to Provide Anti-Splash
- SG-ATS Bars Are Machine Serrated to Provide Anti-Slip Surface

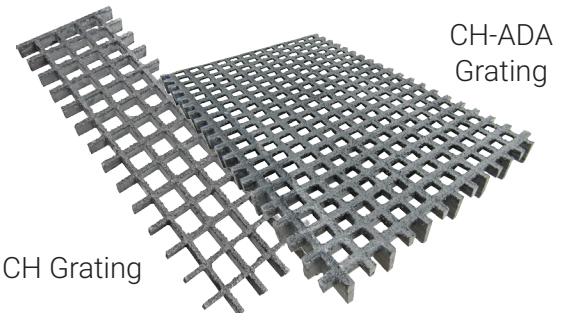
LG GRATING



NSF

- Constructed of 16GA Stainless Steel with Die-Formed Louvers
- Fully Welded, Polished Smooth, 1" High
- Louvers are not Available on Grate Section Less than 12" Wide
- Gratings Are Sized up to 20" Long Sections

CH GRATING



CH Grating

CH-ADA
Grating

- Constructed of Molded Squares & SGF Polyester Resin – Dark Gray (Yellow & Green Also Available)
- Standard Grid Size is 1½" x 1½" Square w/ a 1" Grid Height
- Top Grid Thickness is ¼", Bottom Grid Thickness is 13/64"
- Grit Surface
- 70% Open Area
- CH-ADA Grating Consists of ¾" Square Mesh Opening with a ½" Open Area Between Bearing Bars





IMC is a Consultant/Designer driven manufacturer of Food Service Equipment. We welcome product recommendations and upgrade suggestions from you. Our mission is to introduce new and innovative products in food service equipment and storage/handling systems.

IMC only uses Type 304 stainless steel which is recommended for high corrosion resistance and uniformity of finish. Every IMC product will perform its intended function even in the most punishing work environment.

Production begins with Laser and CNC machine work and the final product is finished with a non-directional brushed satin. The finish has the ability to hide and blend scratches for many years. Each product is then carefully inspected and protected for delivery to the customer.

For a complete catalog or the representative nearest to you,
Visit www.imcteddy.com or contact us below.



50 Ranick Drive East • Amityville, NY 11701

800-221-5644 • info@imcteddy.com

www.imcteddy.com

