

More than you expected.

Goff's



# G1 Bug Screen Doors

Setting the Standard for Bug Screen Doors at your Dock.

Keep bugs, birds, and intruders out while allowing fresh air flow in.

## Increase profitability & convenience at your facility.

Bug screen doors are designed to provide your facility with the convenience of natural air flow and light, while preventing bugs and pests from entering your facility. While most solutions on the market are simply cheap versions of other door designs, cutting corners on quality and longevity, **Goff's G1 doors are the better engineered, longer lasting solution for your low to medium traffic doors.**

### The better bug screen solution:

#### Protect your facility from bugs, birds, and intruders.

Allow natural airflow without the unwanted visitors! Goff's bug screen doors feature upper, side, and floor seals to ensure a complete barrier solution, helping improve productivity & morale in your facility.

#### Improve comfort & reduce energy costs... all year round.

Goff's easy-to-replace door panel system lets you swap out panels as seasons change to maximize your potential savings. Mesh panels can provide a 65% shade factor, while still allowing natural air flow to improve employee comfort. In colder months, you can easily swap out panels for solid vinyl to save on heating costs, while preventing your building contents from excessive wind entry.

#### Built to withstand your daily warehouse activity.

All G1 doors come standard with heavy duty pultruded fiberglass wind bars and corrosion-proof PVC tracks. Designed to minimize moving parts, and featuring easy-to-replace parts, our bug screen can keep you up and running, maximizing productivity potential for your warehouse.



### Easily interchange or repair panels:

Whether you damage a panel in your Goff's bug screen door, or want to swap to solid panels for the winter months, Goff's has you covered. We designed our panels to be easy-to-replace and affordable. Whether providing additional panels with your order, or shipping replacements within a couple of business days, we designed our G1 doors to maximize your time spent up and running.



## Installation is easy as 1-2-3!



### Always Pre-Assembled

Forget the other guy's bag of loose parts. We pre-assemble every door's major components to ensure the highest quality standards, reducing install time.



### Easy Track Mounting

Easily secure your door tracks in-jamb or face mounted using our pre-drilled holes, or mount around your existing door with our projection mount brackets.



### Pest-Proofing Included

Our projection-mounted door tracks come with pre-installed side seal panels properly sized to make installation and pest-proofing a breeze!



### Optional Plug and Play

Simplify installation and electrical work with our plug and play pre-wired option! Simply mount the switchbox and plug into an outlet, and you're good to go!

## ACTIVATION METHODS



### Powered In-Tube Motor

Our In-Tube Motors operate at 12"/second or 6"/second.



### Chain Hoist

Features an integrated brake and 4:1 gearbox ratio.



### Hand Crank with Drill Assist

Manual hand crank with optional drill attachment.



### Manual Spring System

Manually lower door and secure with attached pin.

## CONTROL OPTIONS



**Toggle Switch is standard** on all powered G1 Bug Screen Doors.



**RF with remote operation** is also available for forklift & vehicle drivers.

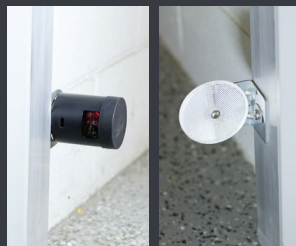


**Pull Cord** available for pedestrians, fork lifts and other vehicle drivers.



**NEMA 1(3) button controller** optional for powered G1 doors.

## ADDITIONAL OPTIONS

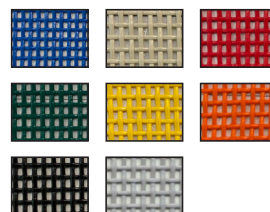


**Reflective Photo Eye** safety option available on powered doors.

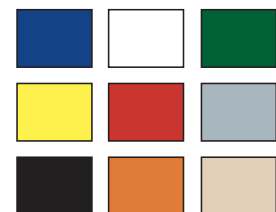


**Locking device** to provide extra security at your loading dock.

### 11x17 Mesh Color Options:



### 18 oz Vinyl Color Options:



## Goff's delivers more than you expected.

With over 30 years of experience, the Goff's team is committed to delivering the most reliable and innovative solutions to improve efficiency in your facility.

**(800) 234-0337 | [sales@goffscw.com](mailto:sales@goffscw.com)**

### Best In Class Warranty

Goff's offers a best-in-class warranty for the G1 series from failure in normal use for a period of 2 years for parts and 1 year for labor. This warranty includes all parts and labor as approved by Goff's tech support team to keep you up and running.

### Fastest Industry Lead Times

With the industry's fastest lead times, you can have your complete G1 Bug Screen System installed and active to provide maximum efficiency at your facility in no time. This will minimize downtime & maximize productivity.

### Customer Care & Tech Support

The Goff's customer care & tech support team is available to answer any questions you have about your G1 Bug Screen system, making sure you not only get the most out of your investment, but ensure it runs smoothly for years to come.

#### CHECK OUT OUR OSHA FALL PROTECTION UPGRADE PACKAGE:

### How are you providing OSHA required fall protection at your loading dock today?

Did you know that **25% of all injuries at manufacturing facilities occur at the loading dock**? Upgrade your bug screen door to provide the ultimate loading dock fall protection system with Fall Guard, our patent pending market-leading solution for the loading dock.



#### The Other Guys



Dock Chain System

#### The Other Guys



Dock Gate System



Fall Guard Safety System

While the other guys aim to check the OSHA box, they create additional risk by allowing falls over or through their "barrier." **Fall Guard creates a complete safety zone** covering the entire opening of your loading dock, ensuring maximum safety while minimizing risk at your facility.



700 Hickory Street, Pewaukee, WI 53072  
Phone: 800-234-0337 | Fax: 800-959-0170  
[goffsenderprises.com](http://goffsenderprises.com) | [sales@goffscw.com](mailto:sales@goffscw.com)

goffs\_G1\_ProductBrochure\_0120.indd | Revised 9.19.22 | 1819

© 2020 Goff's Enterprises, Inc All Rights Reserved