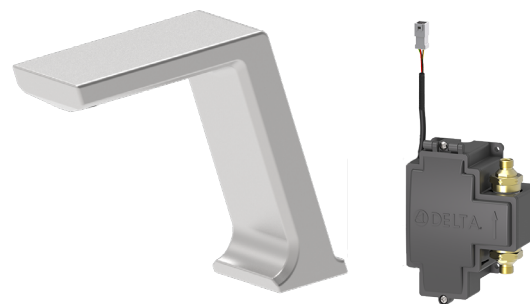


CONTRASTA™ SERIES - PROXIMITY® FAUCET

COMMERCIAL

SPECIFICATION: (Example - 820DPA20-SS)

- **Proximity® Sensing Technology**
- Adjustable sensing range and timeout
- **Surface Mount Control Box** – supplied as complete product
- **Hardwire Operated** (24 VAC) deckmount handwash system
 - Requires separate order of **AC filter** and transformer to have complete product
- Metal hold-down package
- Serviceable filter screen upstream of the valve
- Maximum flow rate - 1.0 gpm (3.8 L/min)
- Supplied with 3 outlet options (Laminar, Aerated and Spray)
- Mixing valve required (order separately)
- Stainless Steel Finish



AVAILABLE CONFIGURATIONS:

- **Power Option**
 - Battery Operated (4 'C' cell) (*Surface Mount Box only*)
 - Hardwire Operated (24 VAC)
- **Surface Mount Control Box** – supplied as complete
- **Recessed Control Box Trim** – supplied as trim parts only
 - Includes – 12 x 12" (305 x 305 mm) stainless steel cover plate, driver board, solenoid
 - Requires separate order of **ELAVT0001ARI** or **ELAVT0008ARI** rough-in
- **Flow rates**
 - 1.0 gpm (3.8 L/min)
 - 0.5 gpm (1.9 L/min)
 - 0.35 gpm (1.3 L/min)
- **Finish** (*Chrome, Stainless Steel, Matte Black and Champagne Bronze®*)

COMPLIES WITH

- ASME A112.18.1/CSA B125.1
- Indicates compliance to ICC / ANSI A117.1
- EPA WaterSense® listed - Outlet Option 2
- Verified compliant with 0.25% weighted average Pb content Regulations

(Contact Delta Representative for State and/or Local Approvals.)

Engineer/Architect Approval

Model Specified:

Approval:

Date:

MODEL NUMBER EXAMPLE:

Configurations vary, see below for availability.

820DPA20-▲

POWER OPTION

0 = Hardwire operated
1 = Battery operated
 (Surface Mount Box Only)

FLOW RATE

2 = 1.0 gpm (3.8 L/min)
5 = 0.5 gpm (1.9 L/min)
9 = 0.35 gpm (1.3 L/min)

CONTROL BOX OPTION

0 = Surface mount box
8TR = Trim **ONLY** for Recessed Box

FINISH

Default = Chrome
SS = Stainless Steel
BL = Matte Black
CZ = Champagne Bronze®

Available Models			Power Option/Control Box Option		
			Power - 0 /Control Box - 0	Power - 0 /Control Box - 8TR	Power - 1 /Control Box - 0
			0 = Hardwire Operated 0 = Surface Mount Box	0 = Hardwire Operated 8TR = Trim ONLY for Recessed Box	1 = Battery Operated 0 = Surface Mount Box
Flow Rates	2	1.0 gpm (3.8 L/min) Laminar, Aerated and Spray	820DPA20-▲	820DPA28TR-▲	821DPA20-▲
	5	0.5 gpm (1.9 L/min) Laminar, Aerated and Spray	820DPA50-▲	820DPA58TR-▲	821DPA50-▲
	9	0.35 gpm (1.3 L/min) Laminar, Aerated and Spray	820DPA90-▲	820DPA98TR-▲	821DPA90-▲

▲ - Designate Proper Finish Suffix

WaterSense® is a registered trademark of the U.S. Environmental Protection Agency

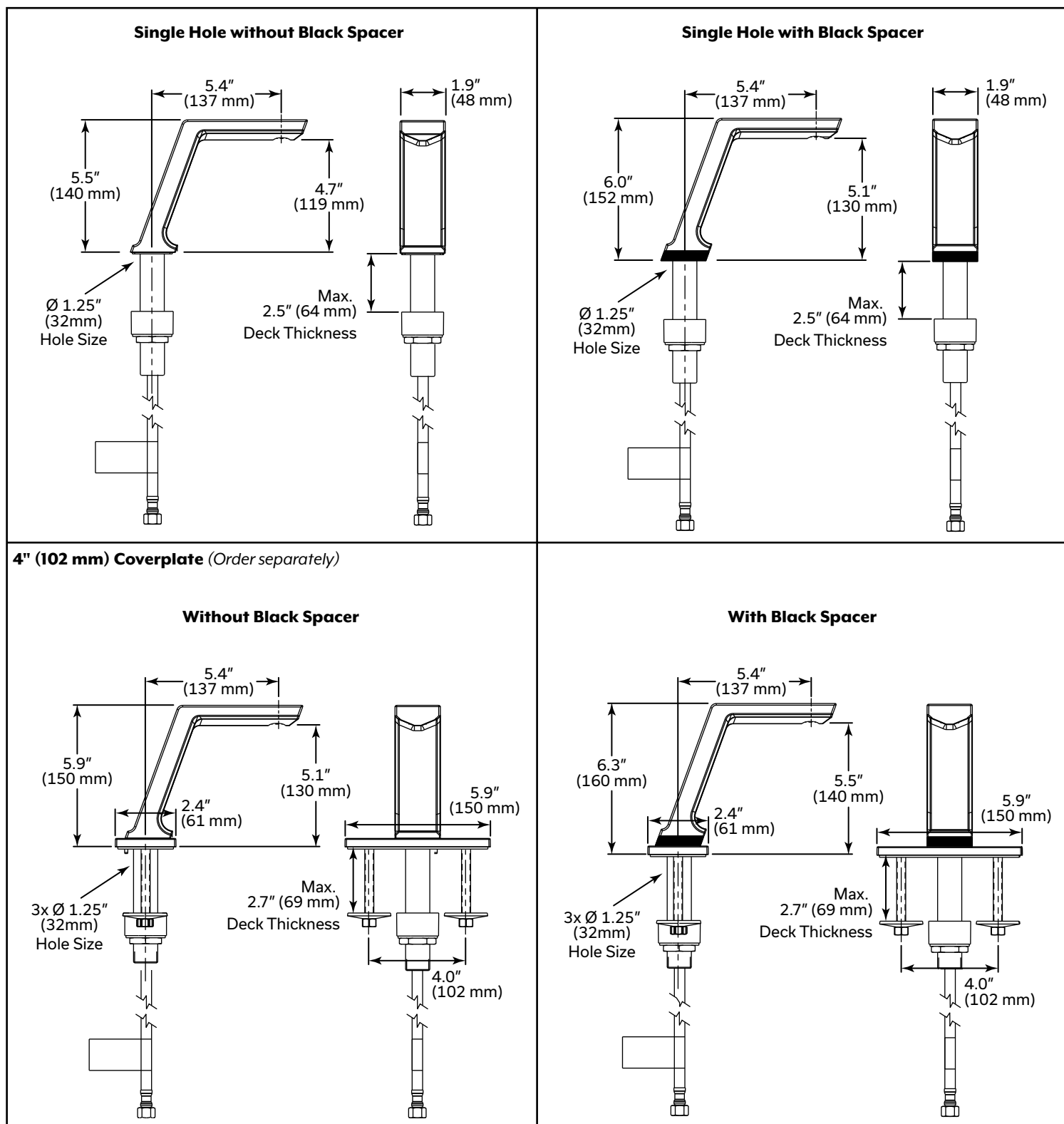
NOTICE Flush volumes are at 60 psi (414 kPa). Use all pages as product submittal sheets.

Delta Faucet reserves the right (1) to make changes in specifications and materials, and (2) to change or discontinue models, both without notice or obligation. Dimensions are for reference only. See current full-line price book for finish options and product availability.

DSP-820DPA, Rev. C

CONTRASTA™ SERIES - PROXIMITY® FAUCET

COMMERCIAL



NOTICE Measurements may vary $\pm 0.25"$ (6mm)

WaterSense® is a registered trademark of the U.S. Environmental Protection Agency

Delta Faucet reserves the right (1) to make changes in specifications and materials, and (2) to change or discontinue models, both without notice or obligation. Dimensions are for reference only. See current full-line price book for finish options and product availability.

Flush volumes are at 60 psi (414 kPa).

NOTICE Use all pages as product submittal sheets.

DSP-820DPA, Rev. C

CONTRASTA™ SERIES - PROXIMITY® FAUCET

COMMERCIAL

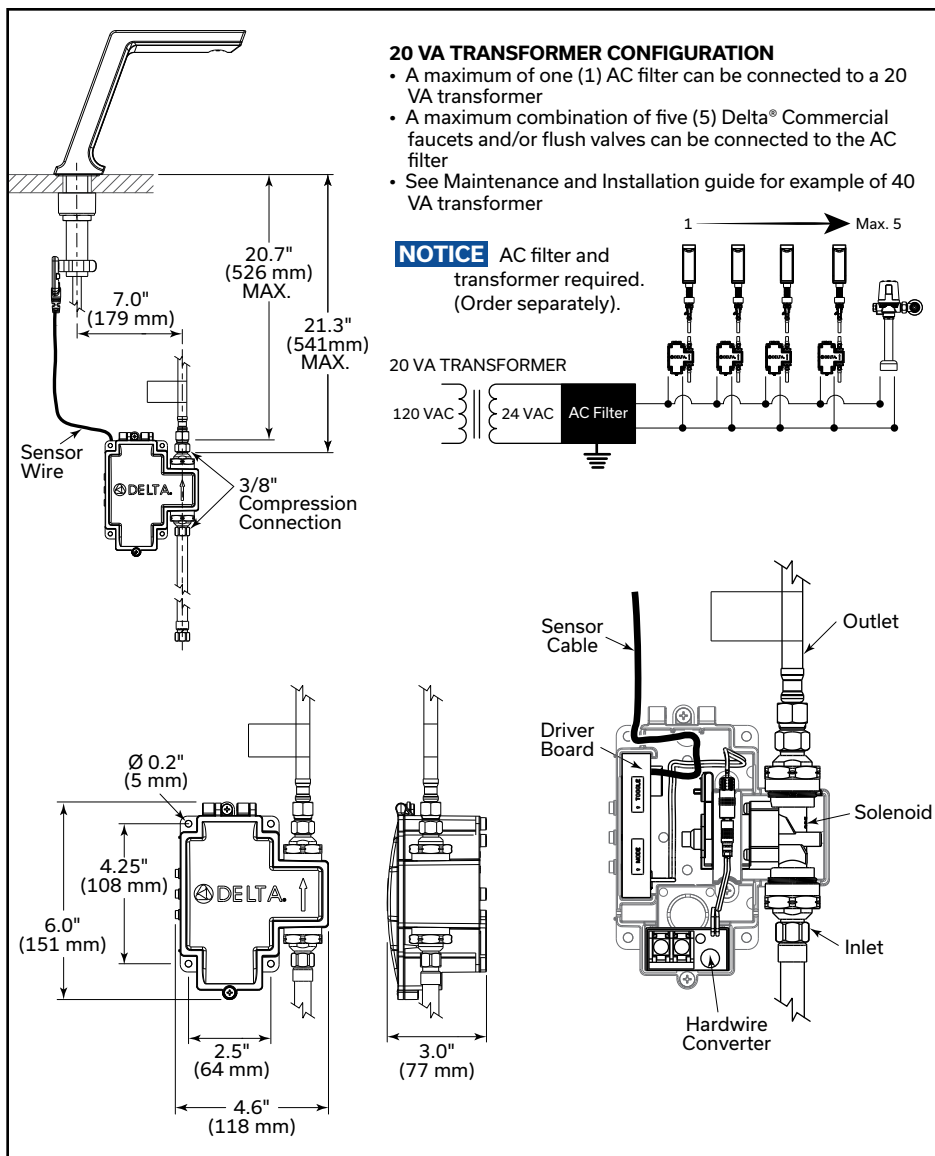
Hardwire Operated Surface Mount Box

OPERATION

- Hands free (touchless) operation.
- No visible sensor, the spout is the sensor.
- Adjustable sensing distance, factory set to approximately 3" (76 mm).
- Adjustable auto shut off feature, factory set to 45 seconds.
- Metering mode with selectable flow times of 7 seconds to 4 minutes, factory set to off.
- Periodic Rinse feature, time adjustable in 6 hour increments up to 2 days. Selectable rinsing time from 10 to 180 seconds. Factory set to off.

NOTICE

- Designed for routine 180°F (82°C) disinfection cycles up to 30 minutes.
- Use only Delta® supplied cable sets. Using non-Delta® cables, cutting or splitting any components will void the warranty.
- Proximity® models not for use on enamel covered metal sinks or metal counter tops.
- Use 2-conductor 18 AWG wire for all electrical connections.
- Use Delta® Commercial approved AC filters and transformers



CONTRASTA™ SERIES - PROXIMITY® FAUCET

COMMERCIAL

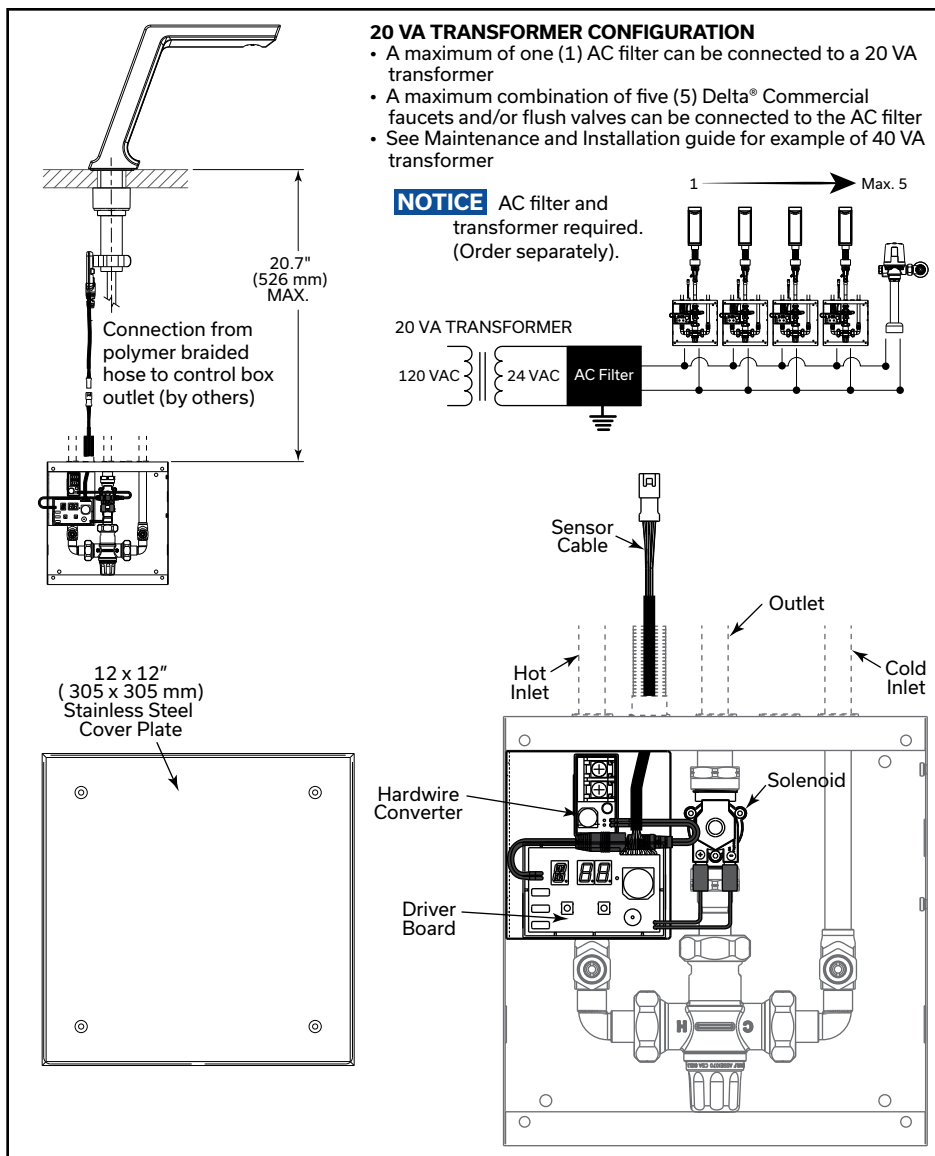
Hardwire Operated Trim ONLY - Recessed Box

OPERATION

- Hands free (touchless) operation.
- No visible sensor, the spout is the sensor.
- Adjustable sensing distance, factory set to approximately 3" (76 mm).
- Adjustable auto shut off feature, factory set to 45 seconds.
- Metering mode with selectable flow times of 7 seconds to 4 minutes, factory set to off.
- Periodic Rinse feature, time adjustable in 6 hour increments up to 2 days. Selectable rinsing time from 10 to 180 seconds. Factory set to off.

NOTICE

- Designed for routine 180°F (82°C) disinfection cycles up to 30 minutes.
- Use only Delta® supplied cable sets. Using non-Delta® cables, cutting or splitting any components will void the warranty.
- Proximity® models not for use on enamel covered metal sinks or metal counter tops.
- Use 2-conductor 18 AWG wire for all electrical connections.
- Use Delta® Commercial approved AC filters and transformers.



Accessories (Ordered Separately)	
061305▲	Square 4" (102 mm) Coverplate
061256A	36" (91.4 cm) Sensor Cable Extension
063268A	Hardwire with Battery Backup See DSP-BBB for detailed specification
060704A	120 to 24 VAC Class 2 20 VA (Up to 5 Electronic Valves)
060771A	120 to 24 VAC Class 2 40 VA (Up to 10 Electronic Valves)
063271A*	AC Filter 24 VAC to 18 VDC (Up to 5 Electronic Valves)
063267A*	AC Filter 24 VAC to 18 VDC plus 120 to 24 VAC Class 2 20 VA (Up to 5 Electronic Valves)
NOTICE ▲ - Designate Proper Finish Suffix * - AC Filter required for hardwire Proximity® models. One (1) AC filter for up to 5 valves.	

NOTICE Measurements may vary ± 0.25" (6mm)

WaterSense® is a registered trademark of the U.S. Environmental Protection Agency

Delta Faucet reserves the right (1) to make changes in specifications and materials, and (2) to change or discontinue models, both without notice or obligation. Dimensions are for reference only. See current full-line price book for finish options and product availability.

NOTICE Flush volumes are at 60 psi (414 kPa). Use all pages as product submittal sheets.

DSP-820DPA, Rev. C

CONTRASTA™ SERIES - PROXIMITY® FAUCET

COMMERCIAL

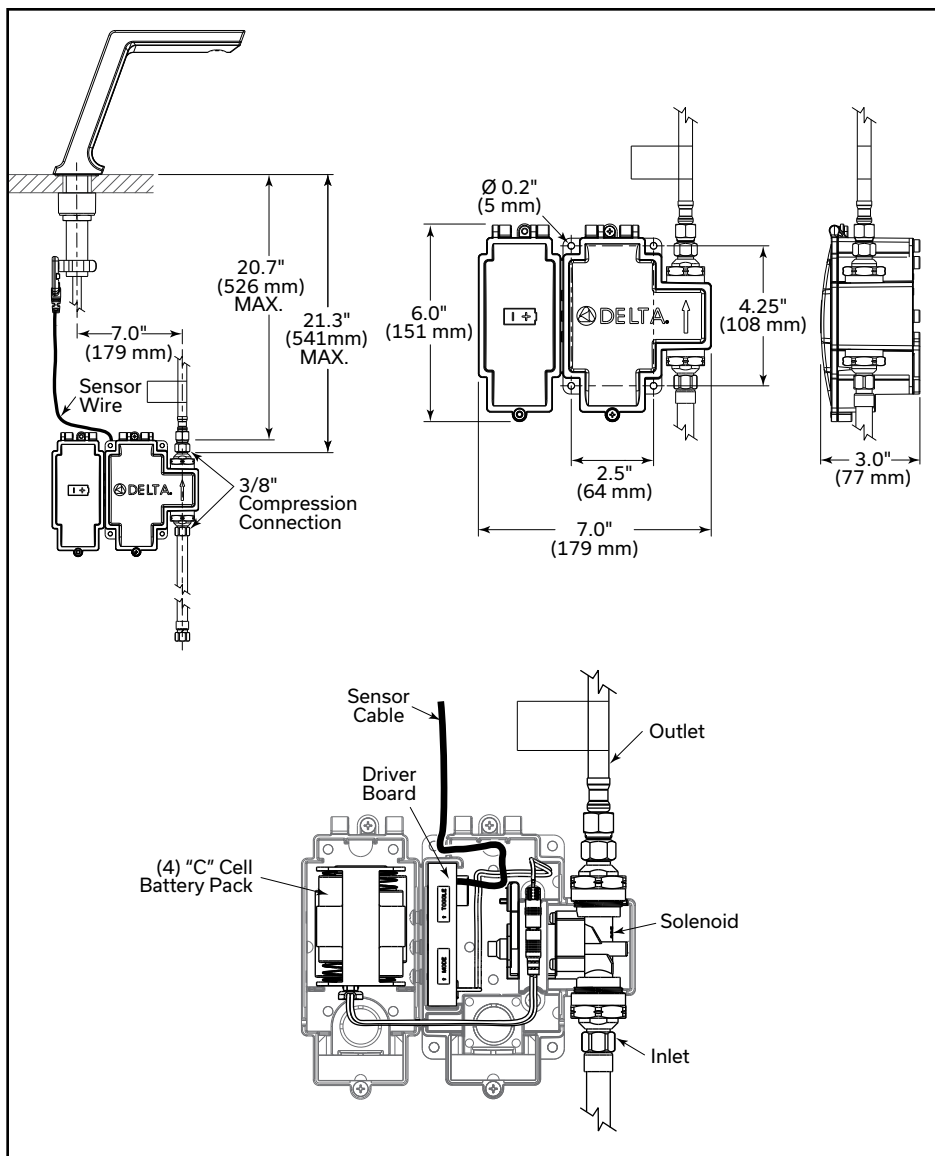
Battery Operated Surface Mount Box

OPERATION

- Hands free (touchless) operation.
- No visible sensor, the spout is the sensor.
- Adjustable sensing distance, factory set to approximately 3" (76 mm).
- Low battery audible beep (for battery models only) will activate after faucet shuts off when low battery condition exists.
- Adjustable auto shut off feature, factory set to 45 seconds.
- Metering mode with selectable flow times of 7 seconds to 4 minutes, factory set to off.
- Periodic Rinse feature, time adjustable in 6 hour increments up to 2 days. Selectable rinsing time from 10 to 180 seconds. Factory set to off.

NOTICE

- Designed for routine 180°F (82°C) disinfection cycles up to 30 minutes.
- Use only Delta® supplied cable sets. Using non-Delta® cables, cutting or splitting any components will void the warranty.
- Proximity® models not for use on enamel covered metal sinks or metal counter tops.



Accessories (Ordered Separately)	
061305▲	Square 4" (102 mm) Coverplate
061256A	36" (91.4 cm) Sensor Cable Extension
063272A	60" (152.4 cm) Ganging/Splitter Cable
063266A	60" (152.4 cm) Plug-in Power Supply 6 VDC
NOTICE ▲ - Designate Proper Finish Suffix	

NOTICE Measurements may vary ± 0.25" (6mm)

WaterSense® is a registered trademark of the U.S. Environmental Protection Agency

Delta Faucet reserves the right (1) to make changes in specifications and materials, and (2) to change or discontinue models, both without notice or obligation. Dimensions are for reference only. See current full-line price book for finish options and product availability.

NOTICE Flush volumes are at 60 psi (414 kPa). Use all pages as product submittal sheets.

DSP-820DPA, Rev. C