

Food Service & Retail

Our products have been conceived to satisfy
any needs in terms of space and yield
required by any kind of business model.

Z1 Nature

The Z1 Nature is the most compact juicer within Zummo's line. It has been conceived to provide the most efficient and profitable solution for those businesses having a very limited space and registering less than 30 glasses per day of output.



*Basket not included



Ref. Z1-NBE

*The juicer Z1 can only squeeze oranges

AVAILABLE COLORS



Ref. Z1-NBR



Ref. Z1-NGP




Ref. Z1-NOR



TECHNICAL FEATURES

Voltage	230 V - 50 Hz. 220 V - 60 Hz. 120V - 60 Hz.
Motor	Single phase 0.16 CV
Energy consumption	Energy consumption on standby 1.8 W
Automatic	Yes
Standby system	Yes
Weight	65 lbs
Feeder	2.2 lbs
Fruits per minute	6,5
Bin capacity	2.38 gal
Diameter of fruit	2.16"-2.75" / 2.48"-2.95". Opt 2.56" - 3.15" / 2.95" - 3.54"
Dimensions	13.39"(l) x 15.24"(w) x 29.69"(h)
Safety	Blocking sensors
Programmer	Yes

 **WARNING:** This product can expose you to chemicals including bisphenol A, which is known to the State of California to cause cancer and birth defects or other reproductive harm. For more information go to www.P65Warnings.ca.gov

ACCESSORIES

Containers

- ¹ Ref. 1903008A-1
- ² Ref. 1903008A-2
- ³ Ref. 1903008A-3
- ⁴ Ref. 1903008A-4



· Capacity: 2.38 gal

- ¹
- ²
- ³
- ⁴

Large cup kit

Ref. 1908020



· Ø 2.56"-3.54 "
· Components: 1 large cup + 1 large ball
+ 1 elastic accessory + 1 calibrator
Ø3.54 "

Basket

Ref. 1902016



· Stores up to 5.5 lbs of fruit

Z06 Nature

The Z06 Nature is the Zummo's most versatile model. Any kind of citrus fruit can be squeezed, and even pomegranates. It is a great choice for those businesses seeking to offer original fruit juice blends and a larger variety of fresh fruit juices.



AVAILABLE COLORS



Ref. Z06-NBR



Ref. Z06-NGP




Ref. Z06-NBE



TECHNICAL FEATURES

Voltage	230 V - 50 Hz. 220 V - 60 Hz. 120 V - 60 Hz.
Motor	Single phase 0.33 CV
Energy consumption	275 W
Automatic	Yes
Weight	116 lbs
Feeder	3.3 lbs
Fruits per minute	10
Bin capacity	5.81 gal
Diameter of fruit	2.16"-2.95" / 2.75"-3.54". Opt 1.77-2.36"
Dimensions	21.57"(l) x 16.97"(w) x 31.93"(h)
Safety	Blocking sensors
Programmer	Yes
Basket capacity	13.23 lbs
Filter	Automatic

 WARNING: This product can expose you to chemicals including bisphenol A, which is known to the State of California to cause cancer and birth defects or other reproductive harm. For more information go to www.P65Warnings.ca.gov

Z06 Nature Inox
Ref. ZI06-N



- Waste bin: 5.81 gal
- Weight: 123 lbs
- 19.69"(l) x 16.97"(w) x 31.93"(h)

Z06 Nature Compact
Ref. CP06-N



- Waste bin: 10.3 gal
- Weight: 138 lbs
- 20"(l) x 17.48"(w) x 42.76"(h)

Z06 Nature Counter Top
Ref. ZM06-N



- Adaptable chutes for counters

¹ Chutes with opening to connect with the counter



Ref. Z06-NOR

Z06

Z06

ACCESSORIES

Bins

- ¹ Ref. 0508039-1
- ² Ref. 0508039-2
- ³ Ref. 0508039-3
- ⁴ Ref. 0508039-4



- Suitable for all Z06 Nature models
- Capacity: 5.81 gal

Stainless steel bins

Ref. 0508040



- Suitable for all Z06 Nature models
- Capacity: 5.81 gal

ACCESSORIES

Small cup kit

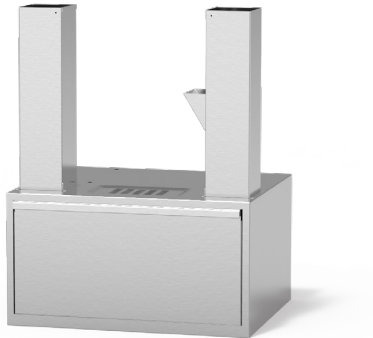
Ref. 0505026



- Suitable for all Z06 Nature
- Squeezes fruit of Ø 2.09" - 2.36"
- Kit consists of: 2 small balls + 2 small cups

Peel collection drawer

Ref. 0509001-N



- Capacity: 10.3 gal
- Weight: 33.07 lbs
- 20"(l) x 17.48"(w) x 10.87" (h)
- Stainless steel

Z14 Nature

The Z14 Nature juicer is the right equipment for those businesses registering a high juice consumption. Additional autonomy can be obtained thanks to its large basket and waste bins. This is a key aspect for buffets, restaurants and the retail sector.





Ref. Z14-NBR

Z14

AVAILABLE COLORS



Ref. Z14-NOR



Ref. Z14-NGP




Ref. Z14-NBE



TECHNICAL FEATURES

Voltage	230 V - 50 Hz. 220 V - 60 Hz. 120 V - 60 Hz.
Motor	Monofasic 0,33 CV
Energy consumption	275 W
Weight	129 lbs
Fruits per minute	16
Bin capacity	3.7 (2 x 1.85) gal
Diameter of fruit	2.16"-2.95" / 2.75" – 3.54".
Dimensions	18.82" (l) 18.11" (w) 32.36" (h)
Safety	Blocking sensors
Basket capacity	20 lb
Programmer	Yes
Filter	Automatic

 WARNING: This product can expose you to chemicals including bisphenol A, which is known to the State of California to cause cancer and birth defects or other reproductive harm. For more information go to www.P65Warnings.ca.gov

Z14 Nature Inox
Ref. Z14-N



- Stainless steel bins
- Bins capacity: 4.8 gal
- Weight: 134 lbs
- 18.82" (l) 18.11" (w) 32.36" (h)

Z14 Nature Self Service
Ref. ZIG14-N



- Tap which activates the machine
- Bins capacity: 4.8 gal
- Weight: 134 lbs
- 18.82" (l) 19.21" (w) 32.36" (h)

Z14 Nature Self Service Counter Top
Ref. ZMG14-N



- Tap which activates the machine
- Adaptable chutes for counters
- Stainless steel chutes
- Weight: 129 lbs
- 18.82" (l) 19.21" (w) 32.36" (h)

¹ Chutes with opening to connect with the counter

Z14



Z14 Nature Self Service Cabinet G 50
Ref. CGC14C-N50

- Tap which activates the machine
- Waste: Basket 15 gal capacity
- Weight: 224 lbs
- 19.69" (l) 23.62" (w) 64.76" (h)
- Stainless steel cabinet
- Gastronorm tray



Z14 Nature Cabinet
Ref. CC14C-N50

- Waste: Basket 15 gal capacity
- Weight: 200 lbs
- 19.69" (l) 23.62" (w) 62.99" (h)
- Stainless steel cabinet



Z14 Nature Fresh Cabinet
Ref. CF14-N65

- Cooling system
- Tap which activates the machine
- Waste storage: bag
- Weight: 242 lbs
- 25.59" (l) 20.87" (w) 70.28" (h)
- Stainless steel cabinet
- Tank: 1.85 gal
- Basket capacity: 20 lbs

ACCESSORIES

Full drip tray
Ref. 1405034A-1



- Suitable for all Z14 Nature
- Includes: dispensing tap

Bins

- ¹ Ref. 1408042-1
- ² Ref. 1408042-2
- ³ Ref. 1408042-3
- ⁴ Ref. 1408042-4



- Suitable for the Z14 Nature
- Capacity: 3.7 (2 x 1.85) gal

Stainless steel bins
Ref. 1408043



- Suitable for the Z14 Nature and Z14 Nature Self Service models
- 13.98" (h) x 11.65"(w) x 4.21" (l)
- Capacity: 4.8 gal
- Stainless steel

Hopper Basket 35 lbs
Ref. 1403026A-1



- Capacity of 35 lbs of fruit
- Kit consists of: hopper and hopper chute

Cabinet G
Ref. MDCESP14-N



- Suitable for the Z14 and the Z14 Self Service models
- 19.69"(l) x 23.62"(w) x 30.71"(h)
- Weight: 75 lbs
- Gastronorm tray




Z40 Nature

The Z40 Nature is the perfect juicer to satisfy the needs from the mass catering industry and large retail outlets. Up to 40 fruits per minute can be squeezed, which enables to have a large amount of juice in a very short time. Typical peaks in demand registered by these businesses can be handled with the Z40 juicer.

TECHNICAL FEATURES

Voltage	230 V - 50 Hz. 220 V - 60 Hz. 120V - 60 Hz
Motor	Single phase 0.5 CV
Energy consumption	410 W — 2,4 W Stand by
Weight	180 lbs
Fruits per minute	40
Bin capacity	7.93 gal (2 x3.96 gal)
Diameter of fruit	Ø 2.1"-3" cup kit. Optional: Ø 2.5"-3.5" L kit. Ø 3"-4" XL kit Ø 1.6"-2.4" XS kit
Dimensions	23.43" (l) 21.65" (w) 38.58" (h)
Safety	Blocking sensors
Programmer	Yes
Basket capacity	44 lb
Filter	Automatic

 WARNING: This product can expose you to chemicals including bisphenol A, which is known to the State of California to cause cancer and birth defects or other reproductive harm. For more information go to www.P65Warnings.ca.gov



Z40 Nature Counter Top
Ref. ZM40-N



· Adaptable chutes for counters

Z40 Nature Self Service
Ref. ZG40-N



· Tap which activates the machine

Z40 Nature LM
Ref. Z40-N-LM



· Can squeeze all citrus. Specially design for limes and lemons
· 25 fruits per minute



Ref. Z40-N

¹ Chutes with opening to connect with the counter



Z40 Nature Versatile Cabinet Plus G
Ref. CV40C-N80

- Storage: 2 baskets with wheels
- Waste capacity 17 gal (2x8.5 gal)
- Weight: 224 lbs
- 31.5" (l) 26.18" (w) 69.37" (h)
- Stainless steel cabinet
- Gastronorm tray
- Basket capacity: 44 lbs



Z40 Nature SS Versatile Cabinet Plus G
Ref. CV40C-N80 + 210545A-1

- Tap which activates the machine
- Storage: 2 baskets with wheels
- Waste capacity 17 gal (2x8.5 gal)
- Weight: 224 lbs
- 31.5" (l) 26.18" (w) 69.37" (h)
- Stainless steel cabinet
- Gastronorm tray
- Basket capacity: 44 lbs



Z40 Nature Service Versatile Cabinet Plus G
Ref. CV40C-N80 + 210816D-5

- Storage: 2 baskets with wheels
- Waste capacity 17 gal (2x8.5 gal)
- Weight: 224 lbs
- 31.5" (l) 26.18" (w) 69.37" (h)
- Stainless steel cabinet
- Gastronorm tray
- Tank: 2 gal
- Basket capacity: 44 lbs

ACCESSORIES

Large squeezing kit
Ref. 210536



- Ø 2.5"-3.5"
- Consists of: 2 large balls of ø 3.15" + 2 large cups of ø 3.46 +1 separator 2.5"-3.5"

Extra-large squeezing kit
Ref. 210537



- Ø 3"-3.9"
- Consists of: 2 extra-large balls of 3.9" + 2 extra-large cups + 1 separator 3" - 3.9"

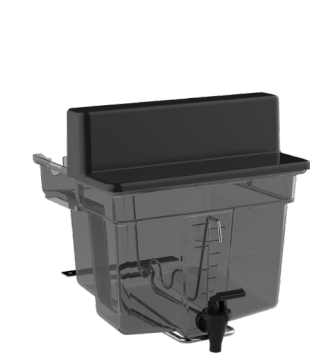
XS squeezing kit
Ref. 210332A



- Ø 1.6"-2.4"
- Consists of: 2 XS balls + 2 XS cups + 1 XS ring + XS blade

ACCESSORIES

Full tank
Ref. 210816D-5



- Suitable for the Z40 Service model
- Tank of 2 gal
- Dispensing tap
- Includes: 1 dispensing tap, 1 manual stirrer, tank support, tank lid, transparent plastic tank

Full drip tray
Ref. 210545A-1



- Suitable for the Z40 Self Service model
- Dispensing tap
- With standing support (Ref. 210554A-1)

Bottle rack
Ref. 0316004-N

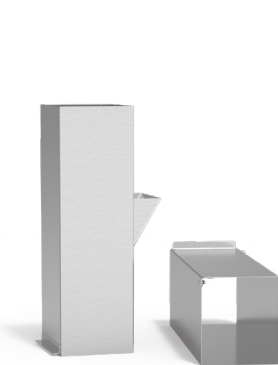


- Can be installed on either side of the cabinet
- Suitable for all* units
- 29.72"(h) x 13.58"(w) x 23.62"(l)
- Weight: 16 lbs

*The bottle rack is not available for Fresh models

ACCESSORIES

Stainless steel chutes
Ref. 210932



- Suitable for the Z40 Nature
- Stainless steel

¹ Top drip tray included

Cabinet Store
Ref. MVP40



- Suitable for the Z40 and Z40 Self
- Service models
- 31.5"(l) x 26.18"(w) x 30.71"(l)
- Weight: 106 lbs
- Storage: 2 baskets with wheels
- Waste capacity 17 gal (2x8.5 gal)

Comparative sheet



	Z1 Nature	Z06 Nature	Z06 Nature Inox	Z06 Nature Compact	Z14 Nature	Z14 Inox Self Service	Z14 Nature Self Service Cabinet G	Z40 Nature	Z40 Nature Self Service	Z40 Nature Self Service Cabinet Plus G	Z40 Nature Self Service Cabinet Plus
	26.67"(h) x 13.39"(w) x 15.24"(l)	31.93"(h) x 21.57"(w) x 16.97"(l)	31.93"(h) x 20"(w) x 17.13"(l)	42.76"(h) x 20"(w) x 17.13"(l)	32.36"(h) x 18.82"(w) x 18.11"(l)	32.36"(h) x 18.82"(w) x 18.11"(l)	62.99"(h) x 24.02"(w) x 23.62"(l)	38.58"(h) x 23.43"(w) x 21.65"(l)	38.58"(h) x 23.43"(w) x 21.65"(l)	38.58"(h) x 23.43"(w) x 21.65"(l)	38.58"(h) x 23.43"(w) x 21.65"(l)
	6.5	10	10	10	16	16	16	40	40	40	40
	3.3 lbs	13.23 lbs	13.23 lbs	13.23 lbs	20 lbs	20 lbs	20 lbs	44 lbs	44 lbs	44 lbs	44 lbs
	2.16"- 3.54"	1.77"-3.54"	1.77"-3.54"	1.77"-3.54"	1.77"-3.54"	1.77"-3.54"	1.77"-3.54"	2.09"- 3.94"	2.09"- 3.94"	2.09"- 3.94"	2.09"- 3.94"
	65 lbs	116 lbs	123 lbs	134 lbs	129 lbs	134 lbs	224 lbs	180 lbs	180 lbs	267.86 lbs	268 lbs
	165 W stand by 1.8 W	275 W	275 W	275 W	275 W	275 W	275 W	410 W stand by 2.4 W	410 W stand by 2.4 W	410 W stand by 2.4 W	410 W stand by 2.4 W
	Yes	Yes	Yes	Yes	Yes	Yes	Yes	Yes	Yes	Yes	Yes
	2.4 gal	5.8 gal	5.8 gal	10.3 gal	3.7 gal	4.8 gal	Bag	7.93 gal	7.93 gal	29.06 gal	29.06 gal
	0.16"	0.12" Self cleaning	0.12" Self cleaning	0.12" Self cleaning	0.12" Self cleaning	0.12" Self cleaning	0.12" Self cleaning	0.12" Self cleaning	0.12" Self cleaning	0.12" Self cleaning	0.12" Self cleaning
	-	-	-	-	-	Yes	Yes	-	Yes	Yes	
	-	-	-	-	-	-	-	-	-	-	2 gal
	-	-	-	-	-	-	Yes	-	-	Yes	-
	-	-	-	-	-	-	-	-	-	-	-

Versions

Dimensions
Height x Width x Depth

Fruits per Minute

Gastronorm

Feeder Capacity

Suitable Sizes

Feeder 16

Weight

Consumption

Safety

Deposit

Filter

Tap

Peel collection capacity

Z22

Juice Extractor



High performance centrifugal juicer for fruit and vegetables with a separate pulp tank – the perfect option for offering a whole range of different combinations.

- Quick and easy to clean in less than five minutes
- Magnetic disc and filter installation
- Up to half gallon of juice per minute
- Built-in motor
- Silent – the rubber base absorbs vibrations
- Feeder space of 2.95 "
- Aluminium body and stainless steel bowl

TECHNICAL FEATURES

Voltage	120 V - 60 Hz
Power	800 W
Energy consumption	275 W
Rpm	3000 Rpm
Weight	41 lbs
Bin capacity	2.38 gal
Dimensions	17.24" (l) 20.16" (w) x 11.42" (h)

WARNING: This product can expose you to chemicals including bisphenol A, which is known to the State of California to cause cancer and birth defects or other reproductive harm. For more information go to www.P65Warnings.ca.gov

SPARE PARTS

Chute accessory
Ref. 220115

Food pusher
Ref. 220104

Complete filter set
Ref. 220114
Toothed disc Ref. 220101



Return on the investment

Parameters		Glasses per day					
Price per case	\$25	10	20	30	40	50	60
Oranges per case	100						
Oranges per glass	4						
Volume per glass	12 oz						
Cost of the machine*	\$6,485.85						
Glass selling price	\$4						
Time to prepare a hand made juice	2.5min						
		Results					
Monthly cost of oranges		300	600	900	1200	1500	1800
Monthly income		1200	2400	3600	4800	6000	7000
Net profit		900	1800	2700	3600	4500	5400
Payback		7	4	2	2	1	1
Monthly time saving for operator		12.5 hours	25 hours	37.5 hours	50 hours	62 hours	75 hours

This example is based on the Z14 m Nature — 2018 rate

┌

┐

└

┘

