

# BACKDRAFT DAMPERS

MODEL 3000, 3100, 3200



3100 Series Shown

## BLADE OPTION:

**SR:** 0.016" - 0.020" roll formed aluminum with vinyl gasket - used with fan motors under 1 HP

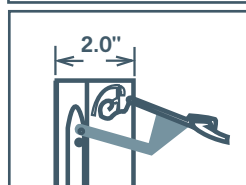
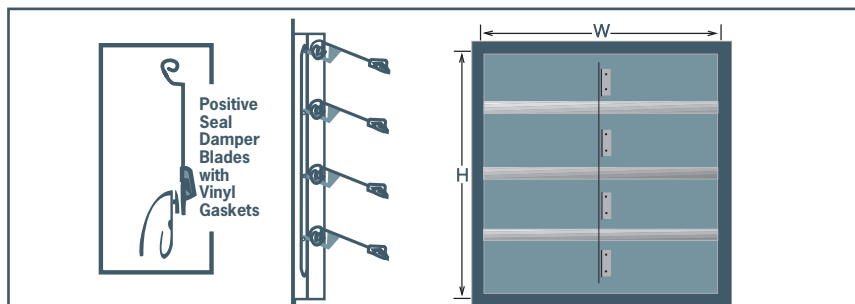
**SE:** 0.05" extruded aluminum with vinyl gasket - used with fan motors over 1 HP

## FEATURES

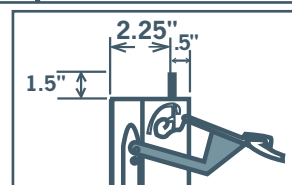
- Sturdily constructed from all aluminum extrusions.
- Roll form blades or extruded aluminum blades.
- Available in any combination of width and height.
- Less than 1% leakage.



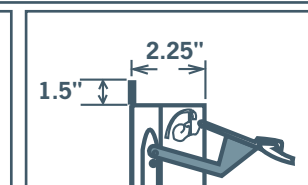
3000 & 3100 Series are undercut by 1/4".  
3200 Series is cut exact.



SERIES 3000  
SIDE MOUNT - NO FLANGE



SERIES 3100  
INWARD MOUNT



SERIES 3200  
OUTWARD MOUNT

## ORDERING METHOD FOR BACKDRAFT & MOTORIZED BACKDRAFT DAMPERS

S R 32 16 X 16

Height 1/4" increments

Separator

Width 1/4" increments

Series 30 for 3000, 31 for 3100 or 32 for 3200

Non motorized - blade type

Motorized - motor

Shutter

R - for Roll form  
(fans using under 1 HP motors)

E - for Extruded  
(heavier blades for motors above 1 HP)

X - for 115/230V  
Z - for 24V AC

Extruded blades with  
multi products motor  
is standard



3100 Series Shown

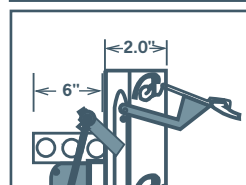
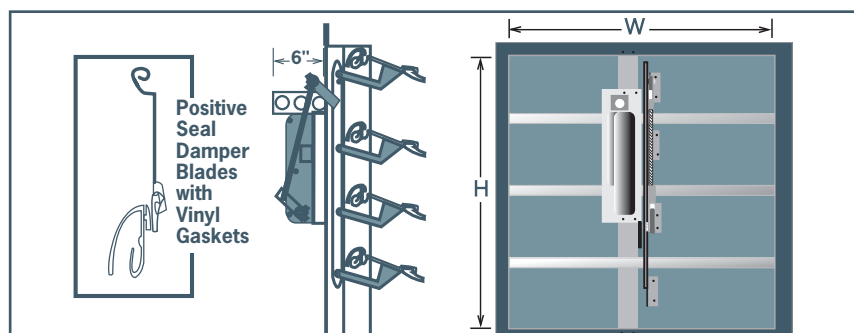


Non-standard shutters are non-returnable and cannot be cancelled.

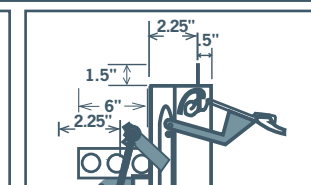
See page K5 in Controls & Thermostats section for Multi-Products replacement motors.

## MOTORIZED BACKDRAFT DAMPERS

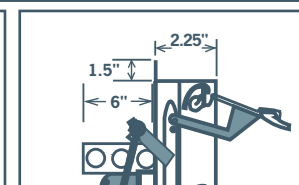
MODEL 3000M, 3100M, 3200M



SERIES 3000M  
SIDE MOUNT - NO FLANGE



SERIES 3100M  
INWARD MOUNT



SERIES 3200M  
OUTWARD MOUNT

## FEATURES

- Sturdily constructed from all aluminum extrusions
- Damper motor factory installed (24V, 115/230V - must specify at time of order)
- Maximum 30.25 sq. feet per motor
- Positive seal keeps leakage less than 1%
- Blades are 0.5" extruded aluminum with vinyl gasket
- Double panel available 30" and up
- Standard multi products motor



3000 & 3100 Series are undercut by 1/4".  
3200 Series is cut exact.

## ACCESSORIES

- Bird screen
- Special coatings
- Insect screen
- End switch