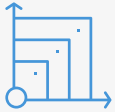


Fellowes Array™ Wall AW2 & Stand AS2



Wall and Stand designs are part of Array™, the most advanced networked air quality system



Seamless &
Scalable Integration



Automatic Sense &
React Technology with
EnviroSmart+™



Effective &
Efficient Filtration

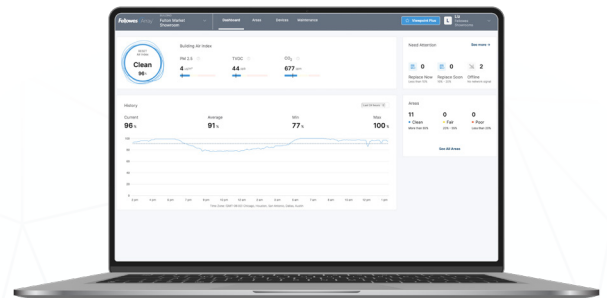


Monitoring & Real-
Time Data with
Viewpoint

Featuring:

- Clean, subtle design includes integrated Lookout display providing Air Quality status to users of an area
- Fellowes 3-stage filtration (pre-filter, carbon, and H13 True HEPA) Effectively removes at least 99.95% of particles as small as 0.1 microns, including allergens, such as pollen, dust, pet dander, and smoke. AW2 and AS2 include dual filters
- Equipped with our EnviroSmart+™ Technology which includes a full suite of comfort and control sensors to continuously monitor contaminants, room occupancy and noise levels to proactively respond to changes. Our integrated suite of indoor air quality (IAQ) sensors includes particulates (PM10, PM2.5), occupancy, temperature, humidity (RH), carbon dioxide (CO2), pressure, and TVOCs
- Access to the Array™ Viewpoint cloud-based dashboard, designed to give users comprehensive visibility into their building's air quality, is included at no charge. All units connect through building-wide, secure LTE
- Designed and engineered for long term use backed with 5-year warranty

Maximize your system with:



Array™ Viewpoint Plus

Building managers can access advanced features in the Viewpoint dashboard, available through a subscription plan

The Full Networked Air Quality System



Fellowes® Array™ AW2 & AS2



AW2

AS2

Code	Dimensions (L x W x H)	Weight (lbs.)	Color
5885101 (Wall)	34.7 x 9.4 x 19.7	35	White
5884501 (Stand)	34.7 x 10.6 x 22.8	40	

Technical Specifications	
Max Air Flow (CFM)	400
Fan Speeds (CFM)	120, 150, 200, 260, 400
Sound Pressure Levels (dB per ISO 3746)	AS2: 28, 34, 39, 45, 58 AW2: 27, 33, 37, 44, 58
Power Requirements	AC120V/60Hz/1.5A
Power Consumption (watts)	10, 14, 23, 41, 152
IoT Connectivity	LTE
Modes	Auto, Quiet, Manual
Filter Change Indicator	Yes
Air Intake	Bottom, Sides
Air Outlet	Top
Warranty	5-Year Limited

Certifications	RESET Air Class B Sensors
CARB*	PM2.5
FCC	PM10
UL 507	VOC/TVOC
EN1822M	CO2
	RH
	Temperature

Virus Testing	Monitoring and Comfort Sensors
H1N1	Pressure
Rhinovirus	Light
SARS-CoV-2*	Occupancy
	Sound

Area Coverage (SQFT)			
eACH	Ceiling Height (ft)		
	8	10	12
1	3,000	2,440	2,000
3	1,000	800	666
5	600	480	400



Code: 9436902

AW2 & AS2 Filter	
Filter Type	Hybrid Filter (Carbon, H13 True HEPA)
Filter Rating	H13 True HEPA
Filter Efficiency	99.95% @ 0.1 microns
Antimicrobial Coating	Yes
Estimated Filter Life	12 months
Pack Size	2PK - Includes Pre-Filter