

MULTI-PURPOSE HIGH PERFORMANCE BLENDER

HOW TO USE THIS USER MANUAL

CAUTIONS

SAFETY INSTRUCTIONS

BLENDER SPECIFICATIONS

BLENDER OPERATION

BLENDER STRUCTURE

INSTRUCTION WHEN MOTOR OVERLOADS

CHANGING THE DRIVE SOCKET

CLEANING & MAINTENANCE

BLENDER EXPLOSION

PRESET PROGRAM FUNCTIONS

Thank you for choosing our product, Smart Multi-Purpose Tea Brewer. Before using the product, please read the user manual carefully, thanks for your cooperation.

HOW TO USE THIS USER MANUAL:

If you want to receive more information regarding any special conditions or problems, please contact with our customer services.

Please do not throw away this user manual, use it for future reference. If the machine has transferred to another user, please include this user manual.

CAUTIONS:

1. Please check whether machine has damage during transportation.
2. Check the parts, and leave aside for backup.
 - User manual x 1
 - Tea Blender x 1 (container x 1, can choose any one from below)
 - Shake type-(container, shake mold, black lid, lid plug)
 - Milk foam type-(container, milk foam mold, black lid, lid plug)
 - Tea (bag) type -(container, tea bag mold, black lid, lid plug)
 - Tea (loose) type—(container, tea bag mold + cover, black lid, lid plug)
 - Smoothie type—(container, blade set, black lid, lid plug, stir stick)
3. The machine should place at a level, steady position, do not lean the machine. Also, do not put in shaking position or near flammable objects.
4. Do not have the machine in contact with direct sunlight or rain.
5. In order to protect human safety, the plug should have a ground connection to protect electricity leaking or electric shock.
6. Plug should plug in a ground connection socket, do not plug in a temporary socket.
7. We suggest to put the machine in a place with clear sight, bright light and spacious place in order to attract attention.



SAFETY INSTRUCTIONS:

- 1.Please read all instructions and operating procedures.
- 2.Make sure the power is 110V or 220V
- 3.Do not wash the blender base with water or soak it into the water to prevent electricity shock.
- 4.Do not let young children to operate the machine
- 5.When not in use, unplug from the socket, turn off the switch, and set the speed to 0.
- 6.When cleaning or disassembly the parts, please remember to turn off power and unplug.
- 7.When the motor is running, please do not put your hand into the cup container.
- 8.Remember to plug in the lid properly while in operation, this enables the stick to stir the food material inside. After blender stops operating, then users can use enclosed scraper to scraper the food inside.
- 9.In case the blade looses or broken, please stop operation the blender. Then contact with distributor or factory technician.
- 10.When put inside high temperature food materials inside, please make sure the lid and lid plug are sealed perfectly. Let the hot air comes out from the holes by itself in order to prevent burn.
- 11.Special caution, when finish using the tea brewer in one day, please unplug i

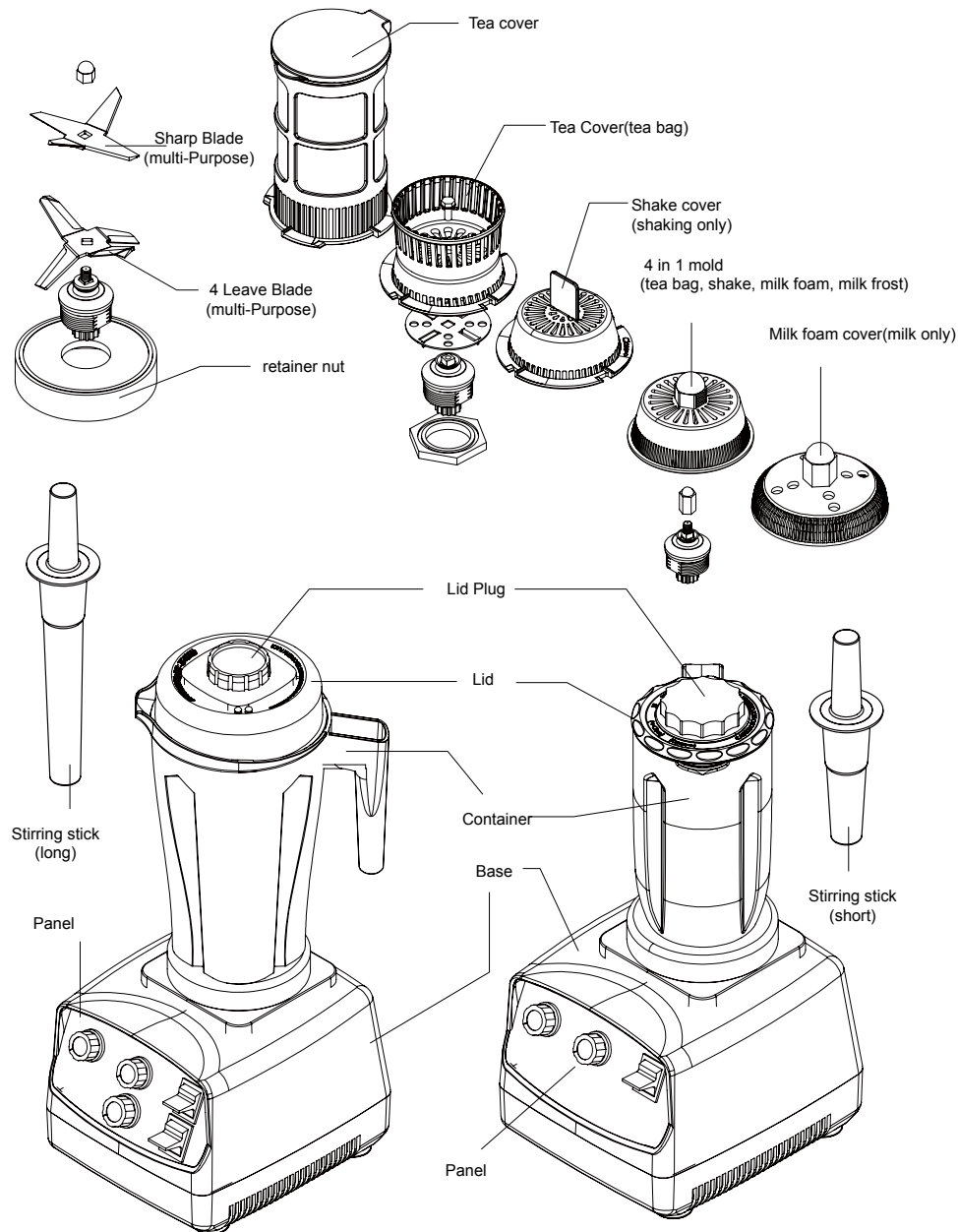
BLENDER SPECIFICATOINS:

Function	Preset program→ automatic change speed				
Model	Shake	Milk foam	Tea (bag)	Tea (loose tea)	Smoothie
Accessory	Shake cover	Foam cover	Tea cover	Tea cover	Blade set
Size	W190 x D215 x H230 +/-41 (mm)		W190 x D215 x H230 +/-56 (mm)		
Capacity	1200cc (PC)		2000cc(PC)		
Voltage	110V 50/60Hz, 220V 50/60HBz				

BLENDER OPERATION:

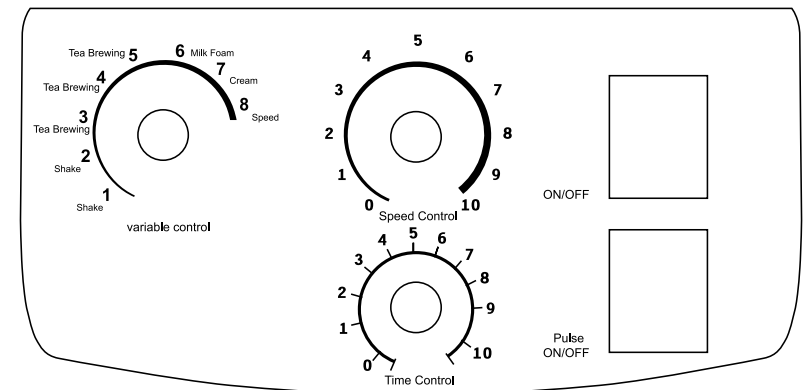
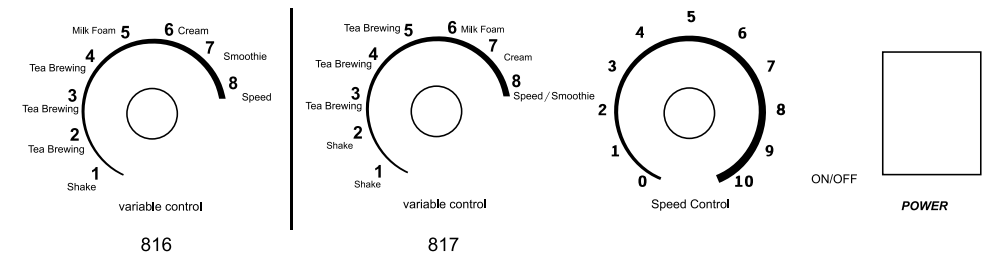
- 1.When trying to make different products, please make sure you have the correct container with correct cover (blade), then add the tea or milk into the container.
- 2.It is better to use slow speed to start then turn into high speed for food material which required more process or sticky food.
- 3.Before operating, please remember to make sure the lid and lid plug are well sealed. If you need to add food material during operation, just open the lid plug and slowly pour in the food material.
- 4.Processing hot food or there are too much food material inside the cup container, it is better to start with slower speed or shift, then back to high speed operation.
- 5.During blending process, if the food material are been pushed toward the cup container wall, it means the RPM is too high, speed should be reduced. On the other hand, if the food materials are moving above the blade, it means the speed is too slow, needs to increase speed.
- 6.After turning off the machine, please wait until the agitator shaft has stopped completely, then you can take out the cup container from the machine.
- 7.This blender is equipped the overload protective switch in order to protect the motor in overload situations. Please wait until the motor has cooled off (can use fan to increase the base cooled off), then press the protective switch, then it can be restarted. If the motor doesn't have enough cooling, then the machine probably can not be started or start for a short time then got shut off again.

BLENDER STRUCTURE:



BLENDER OPERATION:

- 1.Axle: If blends hard material, it will cause malfunction. If the outside plastic part happens to break, it is meant to prevent the motor malfunction.
- 2.Panel:
A: On/Off Switch, Speed knob, Program knob→ PIC1
B: On/Off Switch, Speed knob, Program knob, Time control, Pulse button → PIC2
- Motor: Multi-control motor
- 3.Fan: bigger fan helps dissipating heat quickly.
- 4.Overload Protective Switch: after blending for some time or blending sticky food materials, overload protective switch will start if the blender is overload. After the motor has cooled off, then the blender is ready to work again.



INSTRUCTIONS WHEN MOTOR OVERLOADS:

1. Check whether power plug has loosen up.
2. Check whether operates the blender in a corrective way.
3. Check whether the food material inside is too sticky
4. Check whether the food material has put too much inside the container.
5. Speed too low and blends too long.
6. When blender operates too long and overloads, and overload protective switch does not cut the power off. Thus, turn off the blender and take out the container, then let the blender work at high speed. By doing this, the blender can cool off more quickly.
7. The blender container's maximum capacity is 2000cc mark, please do not put food material above the mark. More sticky food will need to decrease the volume accordingly (ex: thick sauces, pastes, jams).

CHANGING DRIVE SOCKET:

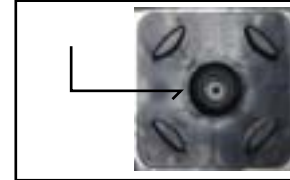
1. Unplug the power plug, turn off the power, and set the knob and speed to 0.
2. Take off the container
3. Turn the blender base, let yourself face the back of the blender.
4. Take off the plastic pad.
5. Turn the drive socket, until you see the arrow on the drive socket line up with the screw hole (under the drive socket). Then take out the silicon that is inside the screw hole.
6. Use a hexagon wrench to loose the screw 3-4 rounds, and then take out the drive socket vertically from the blender base.
7. Line up the rectangular hole on the drive socket with the axle, then install vertically to the very bottom.
8. Turn the new drive socket until its arrow line up with the screw hole (under the drive socket), then use hexagon wrench to tighten the screw, then use silicon to fill the screw hole.
9. Connect the power plug and turn on the blender to try. If the noise is louder and the shaking is bigger. You can try to reinstall the drive socket and turn in a different position (90°). Try all different 4 directions to find the best position if necessary.

CAUTION!

If the drive socket is melting, and the axle has abnormal sound, you can use the following instruction.

1. Place back the plastic pad, use two long and hard tool (ex: flat head screw driver) and apply the same force on the side to get the drive socket out. Then remove the plastic pad. Clean the axle and surrounding plastic debris. Then install the new drive socket according to the above instruction 7 and 8.

Fig 1



Aim the two arrows

Fig 2



Use a hex wrench to fix the screw

Fig 3



Use two tools to lift up the drive socket

NOTE: Changing blade needs to remove the below retainer nut first. Turn clockwise to remove, counter-clockwise to tight it. The blade is sharp, please handle with care.

CLEANING & MAINTENANCE:

Things to prepare before cleaning:

1. Soft cloth (or sponge) 2. Neutral detergent. 3. Towel 4. Long handle soft brush

A: Base Cleaning

1. Unplug the power plug.
2. Use wet cloth plus neutral detergent and wipe the surface of the blender base, panel switch. Then use dry soft cloth to wipe it dry.

B: Plastic Pad Cleaning

1. Disassemble the blender container, and take out the plastic pad, then use neutral detergent to clean. After cleaning, use towel to dry, and assemble back to its original position.

C: Container:

1. Pour moderate amount of neutral detergent into the container, then add 500cc of warm water to mix, then use medium speed (5~6) to let the blender mix. Use clean water to wash after 60 seconds of blending.
2. If the food material contains oil, then turn off the machine after pouring neutral detergent inside, then use long handle brush to brush the side. REMEMBER!! Do not put your hand inside the container to wash or clean in order to avoid injury. Also, do not insert any stick or brush inside the container when the container is blending (washing).
3. Always keep the container clear, avoid leaving food inside the container. It will cause bacteria which will damage the shaft that is connected to the blade.
4. After container has been cleaned and dried, place the container up side down on the table. This can prevent water humidity to enter the blade shaft and thus have better product life cycle

PRESET PROGRAM FUNCTIONS

1 (SHAKE)

- A. Pour ice into container, then add syrup
- B. Turn the Timer knob to (1), then hit the start switch, then add your desire amount of tea product into the tea brewer. (Add cream powder if want to make milk tea), then just wait until the program stops.

2. (TEA 1) –Green tea

- A. Put the tea bag into the tea cover, then add desire water amount into the container.
- B. Turn the timer knob into (2), then hit the start switch, then just wait until the program stops.

3 (TEA 2)—Oolong tea

- A. Put the tea bag into the tea cover, then add desire water amount into the container.
- B. Turn the timer knob into (3), then hit the start switch, then just wait until the program stops.

4 (TEA 3)—Black tea / milk tea

- A. Put the tea bag into the tea cover, then add desire water amount into the container.
- B. Turn the timer knob into (4), then hit the start switch, then just wait until the program st

5 (MILK 1) –milk foam

- A. Pour desire milk amount into the container.
 - B. Turn the timer knob into (5), then hit the start switch, then just wait until the program stops.
- ** We suggest only blend one time, the second time will make the milk foam become harder, taste gets worse.



6 (MILK 2)—milk frost

- A: Pour desire milk frost powder or fresh cream into the container.
- B. Turn the timer knob into (6), then hit the start switch, then just wait until the program stops.

7 (SMOOTHIE)

- A: Pour desire milk ice cubes, materials, liquid (water / milk / yogurt) into the container.
- B. Turn the timer knob into (7), then hit the start switch, then use the stick to mix the materials if necessary. Then wait until the program stops.

8 (VARIABLE SPEED)—“manual”

- A: Turn the timer knob into (8), then you can adjust the center “speed knob” manually to adjust your own speed.

NOTE: Programs 1~7 are already preset for different drinks. When the machine is in operation, the speed knob can not be adjusted. The machine will stop when the program reach its preset time. .

9. Time Control (Needs to turn the Variable Control knob to Speed before use)

After turning to Speed, time control function is enable. The lowest time control is 5 seconds, highest time control is 255 seconds. One space is average 25 seconds. Choose from 1~10 for your desire seconds. When the desired time has reached, the blender will stop.

10.PULSE ON/OFF

When press and hold the pulse switch, the blender will operate at its maximum speed, until the pulse switch has released, then the blender will stop.

Adjust RPM (rounds per minute)

- 1.First, please plug in blender’s power cord.
- 2.Choose the speed which you want to adjust.
- 3.Remove the power cord from the socket, then plug in again.
- 4.Turn on, and hold the switch. After about 15 seconds, the blender will start moving, then you can adjust the RPM that you want (use the speed control knob in the center to turn to the ROM that you want. After the adjustment has done, release the On/Off switch.
- 5.Then remove the power cord from the socket, then plug in again. The RPM adjustment has completed.
- 6.To adjust other speed control’s RPM, follow and repeat the above steps

HOW TO DO?

Ice Tea Shake

- 1.Add enough amount of ice cubes into the container, then add syrup.
- 2.Turn the function knob to “Shake”, then turn on the blender switch.
When it is done,

Fresh Tea

- 1.Put tea bag into the tea bag mold.
- 2.Pour hot water into the container.
Add 200~220cc of hot water for making 500cc of tea, add 270~300cc of hot water for making 700cc of tea.
- 3.Turn the function knob to
 - [Tea 1] Unfermented→ Green tea
 - [Tea 2] Half fermented→ Oolong tea
 - [Tea 3] Fully fermented→ Black tea/milk tea
- 4.Turn on the start switch, it is done when the blender stops.



Milk frost

- 1.Mix 50g of milk frost powder, add 150cc of liquid (water/milk/long life milk) into the container with milk frost mold.
 - 2.Turn the function knob to [Milk 2].
 - 3.Turn on the start switch, it is done when the blender stops.
- PS—You can add a little bit of salt, cheese or other seasonings to create different flavors

Milk foam

- 1.Add 250cc of whole milk into the container with milk foam mold. (Optional: You can also put one or two ice blocks along with the whole milk to make icy taste)
 - 2.Turn the function knob to [Milk 1].
 - 3.Turn on the start switch, it is done when the blender stops.
- PS—We suggest to use “long life milk”, gives better results.

500/700 Ice Milk Tea

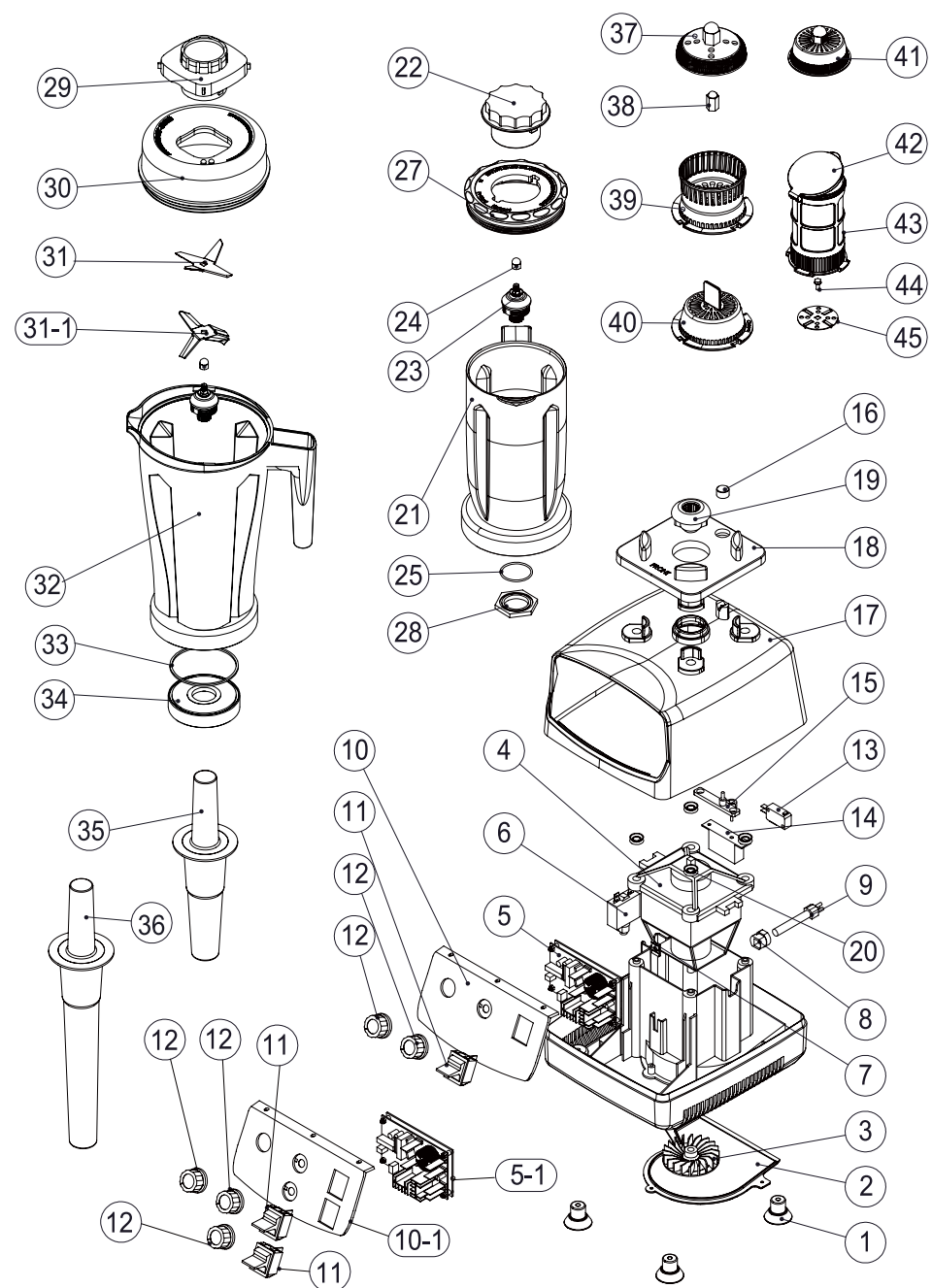
- 1.Make tea first, then pour them outside to a separate container. Then add cream powder and mix well, so it becomes milk tea.
- 2.Add ice cubes into the blender container, then pour in milk tea into the blender container as well.
- 3.Turn the function knob to [Shake] and turn on the start switch, it is done when the blender stops.

Smoothie *Ice cube

- 4.Please put in ice cubes first, then liquid, then food materials into the container (from hardest to softest materials).
- PS→Commercial smoothie usually made by powder or liquid, easier to make and shorter time.
- PS→Family smoothie usually made by fresh fruits, more difficult to make and it takes longer time.
- PS→The liquid use will base on personal preferences and costs, such as water, milk, yogurt, fruits tea..etc.
- PS→When blending smoothie, if the blade can't blend anything, it will be better to stir the inside materials with stirring stick.
- Please do not stir vertically and stir over 30 seconds.



BLENDER EXPLOSION:



PARTS LIST:

No	
1	Rubber foot
2	Bottom housing
3	Fan blade
4	Fan blade
5	PC Board
5-1	PC board (Smart 5-in-1)
6	Overload protective switch
7	Spring clip (PC board)
8	Clamp wire plate
9	Power cord
10	Panel
11	Power switch
12	Speed / Program knob
13	Micro switch PAT-118E-0069 (3pin)
14	Micro switch fixed stand
15	Micro switch movable stand
16	Micro switch button
17	Top housing
18	Sound reducing centering pad
19	Drive socket
20	Motor gasket
21	1L container
22	1L container lid plug

No	
23	Axle set (for blade)
24	Nut
25	O-ring for retainer nut
26	Bottom cover
27	1L container lid
28	Hexagon retainer nut
29	2000cc L container lid plug
30	2000cc L container lid
31	Sharp blade
31-1	4 leaves blade
32	2000cc L container
33	Gasket for Axle set
34	
35	Short stick #4
36	Long stick #1
37	Milk foam/frost mold
38	Hexagon nut
39	Tea mold
40	Shaker mold
41	Multi-function mold
42	Cover for Tea box mold
43	Tea box mold
44	Hexagon screw M4, 10
45	Round blade