

24" OSCILLATING **WALL FAN**

INSTRUCTION MANUAL

#73AVF24WF

TABLE OF CONTENTS

PRODUCT INTRODUCTION.....	3
IMPORTANT INSTRUCTIONS.....	3
WARNINGS.....	4
RULES FOR SAFE OPERATION.....	5
OPERATING INSTRUCTIONS.....	5
FAN INSTALLATION INSTRUCTIONS	6
FAN ASSEMBLY DIAGRAM.....	7
CARE AND MAINTENANCE	8

SPECIFICATIONS

MODEL	VOLTAGE	WATTS	HERTZ
73AVF24WF	120V	180W	60Hz

PRODUCT INTRODUCTION

This product is intended for indoor office, industrial, or other commercial applications. Use only with electrical wiring that is in good working order and that meets applicable codes and ordinances. If you have any questions whether your wiring is adequate, consult a qualified electrician.

While using your Boltic fan, you should follow the **IMPORTANT INSTRUCTIONS** listed below. As part of those instructions, we have used the word “**WARNING**” to indicate the level of hazard: **WARNING** indicates a hazard which, if not avoided, could result in injury or death.

IMPORTANT INSTRUCTIONS

As with all electrical appliances, basic safety precautions should always be followed to reduce the risk of electric shock, fire, or injury to persons, including the following precautions:

- Read all the instructions before using this fan.
- Use this fan only as described in this manual. Any other use not recommended by the manufacturer may cause electrical shock, fire, or injury to persons.
- Do not operate the fan with a damaged power cord or after the fan malfunctions or has been dropped in any manner.
- Use of extreme caution is necessary when any fan is used by or near children, disabled persons, or pets, and whenever the fan is left operating unattended.
- Do not place the fan on small, unlevel, or uneven surfaces, or on any surface which might allow fan to tip or fall.
- For proper operation, fan should be placed on a smooth, noncombustible, level surface.
- Always unplug fan when not in use, when moving from place to place, when assembling or disassembling parts, and before cleaning.
- The use of attachments not recommended or sold by the manufacturer may cause hazards.
- Do not use outdoors.
- Do not use fan in a window. Rain may cause electrical hazard (for non-window models).
- Do not operate the fan with blade guards or any safety device removed.
- A dedicated circuit must be used with this equipment. Avoid the use of extension cords due to risk of fire..
- Do not run power cord under carpeting. Do not cover cord with throw rugs, runners, etc. Arrange cord away from high-traffic areas to avoid tripping hazard.
- Do not insert or allow any object to enter any openings on the fan. Doing so may cause electric shock and / or fire hazard. Avoid contact with moving parts.

WARNINGS



OBSERVE THE FOLLOWING:

WARNING: Shock Hazard

Use your fan only in dry environments. This fan is not intended for use in a bathroom, laundry area, or similar locations, or near sinks, washing machines, swimming pools, or other sources of water. Never locate fan where it may fall into a bathtub or other water receptacle. DO NOT use in damp environments such as flooded basements.

WARNING: Hot Surfaces

DO NOT touch fan motor when in use. This motor is hot when in use. To avoid burns, DO NOT let bare skin touch hot surfaces.

WARNING: Fire Hazard

Fans have arcing or sparking parts inside. DO NOT use near combustible materials, flammable gases, or sources of heat. DO NOT USE in areas where gasoline, paint, or flammable materials are used or stored. To prevent a possible fire, DO NOT block air intakes or exhaust in any manner. DO NOT insert or allow foreign objects to enter any ventilation or exhaust opening, as this may cause an electric shock, fire, or damage to the fan.

WARNING: Electrical Shock Hazard

Do not use with damaged cord or plug. Use with adequate electrical system that is up to code.

CAUTION: To prevent electric shock, this product has a 3-prong grounded plug that must be inserted into a matching properly grounded outlet to reduce the risk of electrical shock. DO NOT attempt to bypass this safety feature.

DO NOT operate any fan with a damaged cord or plug, after fan malfunctions, or after fan has been dropped or damaged in any manner. Unplug the fan when not in use. DO NOT operate fan with its ventilation obstructed.

WARNING:

1. To reduce the risk of fire or electric shock, do not use this fan with any solid state speed control device.
2. This appliance has a ground plug which is intended to fit in an outlet only one way. If this does not fit an outlet, contact a qualified electrician. Do not attempt to bypass this procedure.
3. This product is for indoor use only.
4. Unplug from electrical supply source before cleaning.
5. If the power cord is damaged, contact your local service center or a qualified electrician to install an appropriate replacement cord to prevent any injury or damage.
6. This appliance is not intended for use by persons (including children) with reduced physical, sensory, or mental capabilities, or lack of experience and knowledge, unless they have been given supervision or instruction concerning use of the appliance by a person responsible for their safety.
7. Children should be supervised to ensure that they do not play with the appliance.

RULES FOR SAFE OPERATION



TO REDUCE THE RISK OF FIRE, ELECTRIC SHOCK, OR INJURY TO PERSONS, OBSERVE THE FOLLOWING:

1. Never insert fingers, pencils, or any other object through the guard when the fan is running.
2. Disconnect the fan when moving from one location to another.
3. Disconnect the fan when removing grilles for cleaning.
4. Ensure the the fan is on a stable surface when operating to avoid overturning.
5. DO NOT use the fan in a window. Rain may create electrical hazard.
6. The fan is for commercial use only.
7. DO NOT leave the fan running unattended.

OPERATING INSTRUCTIONS

Fan Operation:

Always operate the fan in the upright position following all instructions and recommendations listed in this manual.

Fan Connection:

Plug fan directly into 120V A.C., 60 Hz wall outlet. Ensure plug fits tightly in the outlet. A loose connection may cause overheating and damage to the plug or fan.

NOTE: To prevent overloading a circuit, do not plug the fan into a circuit that is servicing other electrical needs.

Oscillation and Speed Control:

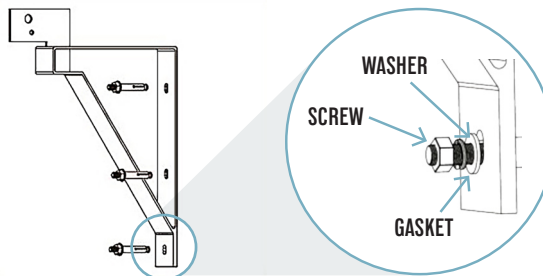
While facing the fan, pull the left string for oscillation and pull the right string on the motor to set desired setting (HIGH and LOW).

To Adjust Airflow Upward or Downward:

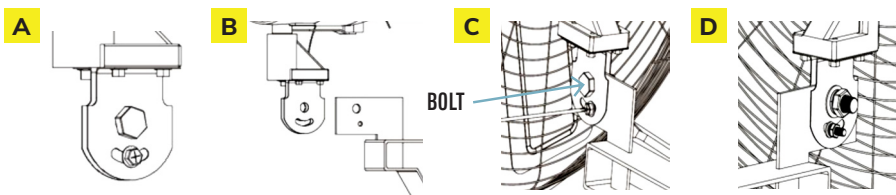
Loosen the position screw first and then loosen the pivot nut. Tilt motor to the desired angle, firmly tighten the pivot nut, and then tighten the position screw.

FAN INSTALLATION INSTRUCTIONS

1. Place the wall bracket onto the wall, insert 3 bolts, and secure each using a washer, gasket, and screw.



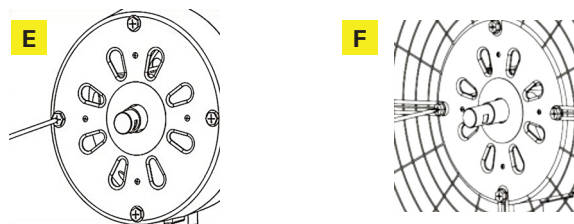
2. Loosen the screws on the support bracket of the motor (A), insert the motor on the angle support bracket (B), align the holes (C), and fasten with screws (D).



3. Remove the screws on the motor and loosen the security screw and buckles on the grilles.

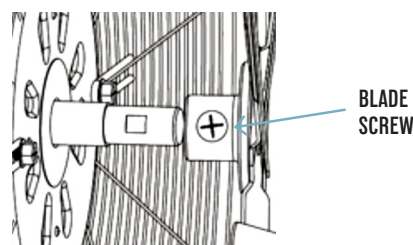
4. Attach the rear grille to the motor (E) and secure using screws (F).

Note: Keep the security screw hole on the bottom.

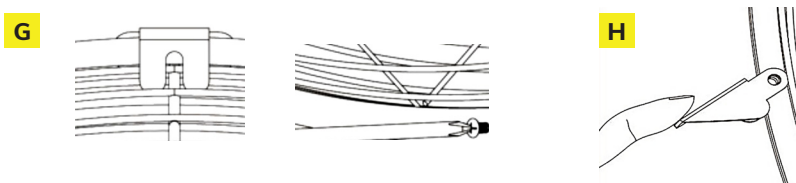


5. Loosen the blade screw from the blade shaft and place the blade onto the motor shaft.

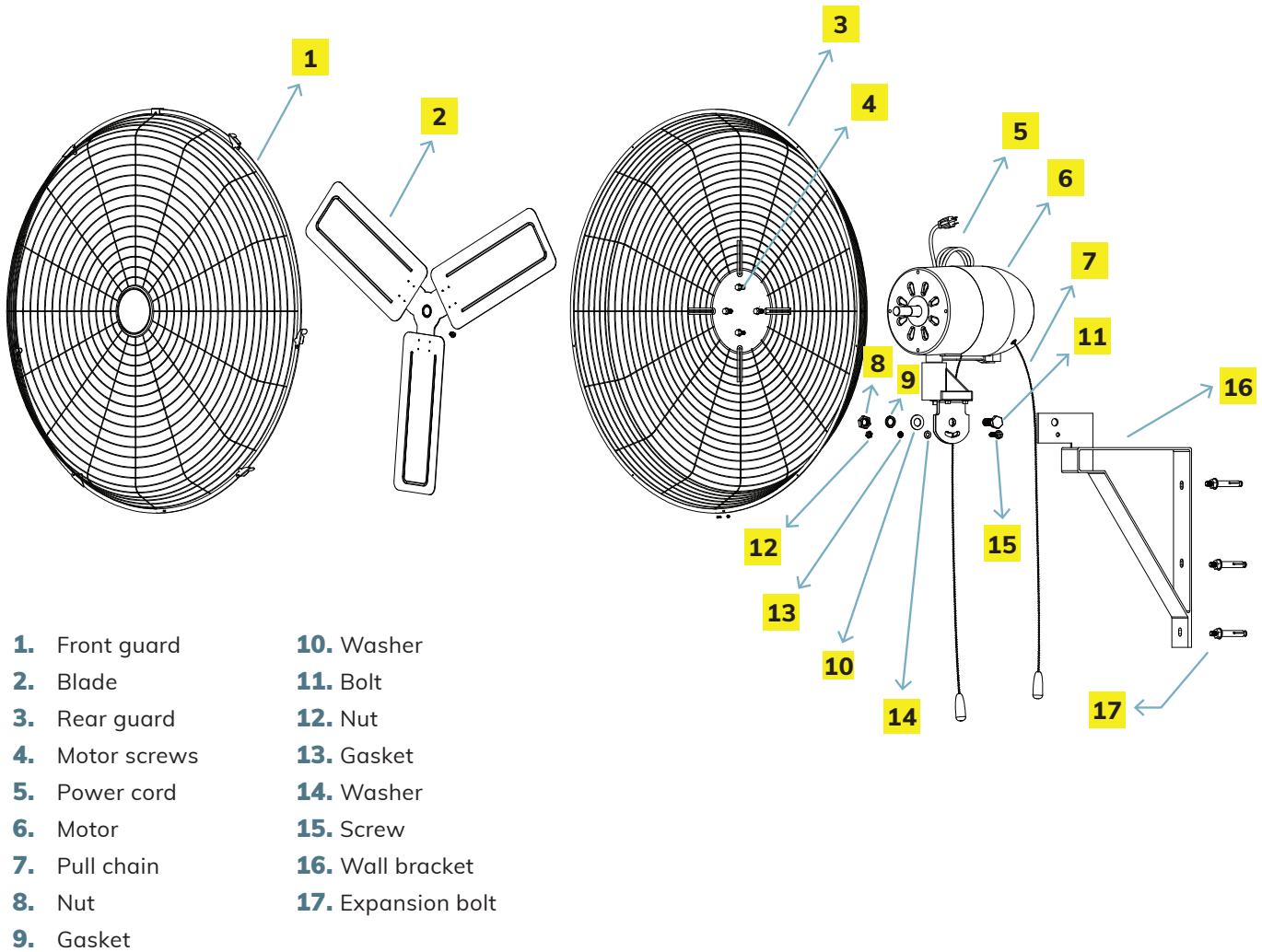
See the sticker on the fan blade to ensure the front and back are facing the correct direction.



6. Secure the front grille and rear grille with buckles (G) and tighten the fan grille with the clips (H).



FAN ASSEMBLY DIAGRAM



CARE AND MAINTENANCE

Cleaning:

- CAUTION - Before cleaning the fan, be sure to disconnect power cord from the plug. Clean the grille surface with a clean, damp cloth. DO NOT use harsh chemicals or abrasive cleaners. DO NOT IMMERSE THE FAN OR ANY WIRES IN WATER. Replace front grille before fan use.
- Allow fan to dry completely before use. Periodic grille cleaning with a vacuum will prevent dust buildup. The motor is sealed and does not require any interior maintenance, cleaning, or lubrication.

Maintenance:

- The internal motor bearings are permanently lubricated at the factory and do not require any additional lubrication.

Repair:

- **DO NOT OPERATE THE FAN WITHOUT THE GRILLE IN PLACE. DO NOT USE THE FAN IF IT HAS MALFUNCTIONED OR BECOME DAMAGED IN ANY WAY.**

Storage:

- Keep original carton for storage of the fan. Coil and tie the power cord to avoid damage during storage.