



# BEVERAGE-AIR®

**2025 PRODUCT OVERVIEW**





# BEVERAGE-AIR®

## BREADTH OF PRODUCTS

### Top Mount Reach-Ins

HR/HF	Horizon Series
PR/PF	P Series
CT	Cross Temp Series

### Bottom Mount Reach-Ins

RB/FB	Vista Series
HBR/HBF	Horizon Series
RI	RI Series

### Warming Cabinets

HH	Horizon Series
PH	P Series

### Glass Door Merchandisers

MT	Marketeer Series
MM	MarketMax Series
BDC/NC	Dipping Cabinets
CF/CT	Countertop Units

### Deli Cases

CDR	Deli Cases
-----	------------

### Open Air Merchandisers

BZ	Breeze Series
VM	VueMax

### Food Prep Tables

SPE	Sandwich Prep Tables
DP	Pizza Prep Tables
SPE-S	Salad Bars

### Worktops & Undercounters

WTR/WTF	Worktops
UCR/UCF	Undercounters

### Chef Bases

WTRCS/WTFCS	Chef Bases
-------------	------------

### Bar & Wine Equipment

DD/DZ/BM	Direct Draw
BM23/DZ24	Bar Mobile
BB/DZ	Back Bar
DW	Bottle Coolers
GF/FLG	Glass & Plate Chiller

### Milk Coolers

SM/SMF	Single Access
ST/STF	Dual Access

### Blast Chillers / Shock Freezers

CF/BF	Self Contained
BF200	Blast Chiller/Freezer/Thawer





**BEVERAGE-AIR**

Beverage-Air has a full range of premium refrigeration and food service equipment solutions to meet the diverse needs of restaurant, chain, retail, convenience store, educational, and healthcare settings.

# 360° SERVICE SUPPORT

**MEETING ALL YOUR SERVICE NEEDS WITH IMPROVED  
SERVICE TECH DISPATCH & WARRANTY PROCESS**



## **Service School**

Our Technical Service team is doing hands-on service training in the field

## **First-Time Fix Program**

Implemented a reward system for service tech companies that fix the issue on the first service call

## **R290 Service Providers**

Ensuring service techs are certified and trained on R290 refrigerant

## **Service Locator on Website**

Up-to-date service provider list on website

# HORIZON<sup>®</sup> SERIES

## Top Mount Refrigerators & Freezers



**Designed to perform in  
high ambient conditions**

**7 Year warranty on parts, labor,  
and compressor**

### **Heavy Duty Construction**

2" CFC and HCFC-free foamed-in place  
polyurethane insulation

### **Full electronic Control**

with one-touch defrost

### **Multiple finish options**

### **Door locks standard**

Solid doors only (optional on glass door models)

### **Field-reversible doors**

Solid doors only

### **Cam-lift hinges**

with 120 degree stay open feature

**Sealed system makes service  
and maintenance quick and easy**

**LED lighting standard**

**Back rack airflow distribution system**

**Self-closing doors**

**6" heavy duty casters standard**

3" casters or 6" leg option available  
at no charge when specified on order

**Environmentally friendly,  
energy efficient R290 refrigerant**



**BACK CHANNEL**  
to promote air flow



**FIELD-REVERSIBLE DOORS**  
for flexibility to get your kitchen set  
up exactly how you want it



# P SERIES

## Spec Line Refrigeration



**Maximum resistance to wear and tear with stainless steel breaker caps and door liners**

**Configurable interior gives ultimate flexibility for shelf and slide combinations**

**7 Year warranty on parts, labor, and compressor**

### **LED lighting**

### **Full electronic control**

### **Self-closing doors**

with 120° stay-open feature, on cam-lift hinges

### **Expansion valve technology**

Freezer only

### **Door locks standard**

Solid and Glass doors

### **Magnetic gasket attached to each door**

for positive seal

### **Sealed system makes service and maintenance quick and easy**

### **6" adjustable legs**

(3" casters or 6" caster option available at no charge when specified on order)

### **3 epoxy coated wire shelves**

per section

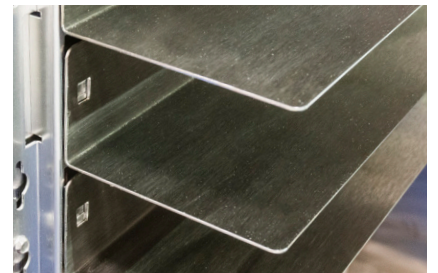
### **Removable access panel**

for ease of service and maintenance



### **TRAY SLIDES A AVAILABLE**

holds one 18x26" or two 14x18"



### **TRAY SLIDES A/C AVAILABLE**

hold one 18x26", or two 14x18", or two 12x20"

# CROSS TEMP® SERIES

## Convertible Refrigeration



**Variable speed compressor technology achieves up to 30% more energy efficiency compared to a single-speed**

**7 Year warranty on parts, labor, and compressor**

**Temperature range of -15 to 40° F**

**Modulates coil temp to achieve desired set point**  
while achieving maximum energy efficiency

**Single cabinet configurable to all menu initiatives**

**Intuitive compressor**  
adjusts for optimal effectiveness in high-use situations

**Quicker pull-down**  
for both air and product temperatures

**Improved product stability**

**Smart-defrost**

**Expansion valve**

**Rapid-recovery after defrost**  
consistent product temperature and ensures food quality

**Door locks standard**  
Solid doors only (optional on glass door models)

**Field-reversible doors**  
(except for CT12-12HC models)

**Featuring environmentally friendly energy efficient R290 refrigerant**

**Cross Temp Chef Bases available**



**EASY-TO-USE CONTROLLER**  
to quickly adjust set points



**VARIABLE SPEED SYSTEM**  
modulates coil temp



# VISTA® SERIES

## Bottom Mount Refrigerators & Freezers



**Designed to perform in  
high ambient conditions**

**7 Year warranty on parts, labor,  
and compressor**

**Full electronic control**

**Door locks standard**

(solid doors only, optional on glass door models)

**One piece grille**

**Cartridge style door hinges**

with 120 degree stay-open feature

**LED lighting standard**

**Self-closing doors**

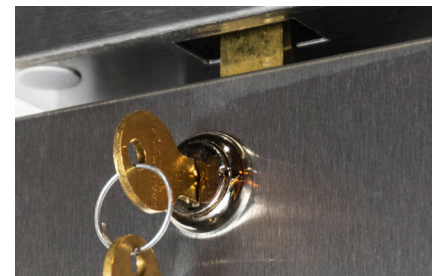
**Right and Left hinged models available**

(specify at time of order)

**6" heavy duty casters standard**

(3" casters or 6" leg option available  
at no charge when specified on order)

**Environmentally friendly,  
energy efficient R290 refrigerant**



**DOOR LOCKS STANDARD**

on solid door units for loss prevention  
(available as an option for glass doors)



**FULL ELECTRONIC CONTROL**

with easy to read digital display

# HORIZON® SERIES

## Bottom Mount Refrigerators & Freezers



**Designed to perform in  
high ambient conditions**

**7 Year warranty on parts, labor,  
and compressor**

### **Heavy Duty Construction**

(2" CFC and HCFC-free foamed-in place polyurethane insulation)

### **Full electronic Control**

with one-touch defrost

### **Door locks standard**

(solid doors only, optional on glass door models)

### **Cartridge-style hinges**

with 120 degree stay open feature

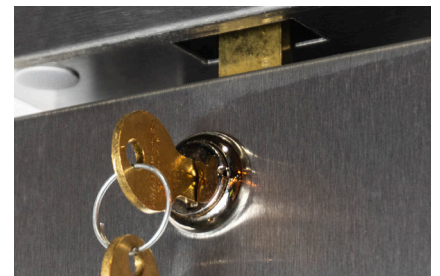
### **LED lighting standard**

### **Self-closing doors**

### **6" heavy duty casters standard**

(3" casters or 6" leg option available at no charge when specified on order)

### **Environmentally friendly, energy efficient R290 refrigerant**



### **DOOR LOCKS STANDARD**

on solid door units for loss prevention  
(available as an option for glass doors)



### **FULL ELECTRONIC CONTROL**

with easy to read digital display



# RI SERIES

## Bottom Mount Refrigerators



**Designed to perform in  
high ambient conditions**

**7 Year warranty on parts, labor,  
and compressor**

### **Compact design**

to fit challenging kitchen layouts

### **Heavy Duty Construction**

(2" CFC and HCFC-free foamed-in place  
polyurethane insulation)

### **Cartridge-style hinges**

with 120 degree stay open feature

### **LED lighting standard**

### **Self-closing doors**

### **6" heavy duty casters standard**

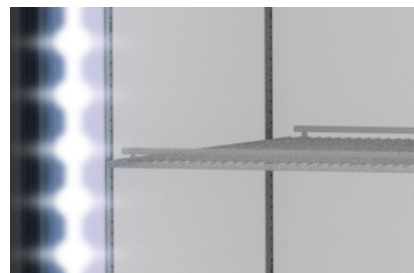
(3" casters or 6" leg option available at  
no charge when specified on order)

**Uses environmentally friendly,  
energy efficient R290 refrigerant**



### **FULL ELECTRONIC CONTROL**

with easy to read digital display



### **BUILT-IN LED LIGHTS**

Improved LED lighting for better product display

# HORIZON® SERIES

## Warming Cabinets



**Optimal airflow for consistent cabinet temperature**

**7 Year parts and labor warranty**

### **Adjustable Electronic Temp Control**

From 80°F To 180°F

### **Built-In Adjustable Humidity Control Vent**

### **Safety Shielded Strip Type Heating Elements**

### **Externally Mounted Blower**

Maintains Even Temperatures

### **Stainless Steel Front**

With Gray Painted Galvanized Sides

### **Corrosion Resistant Aluminum Interior**

### **Stainless Steel Breaker Caps**

### **Snap-In Magnetic Door Gasket**

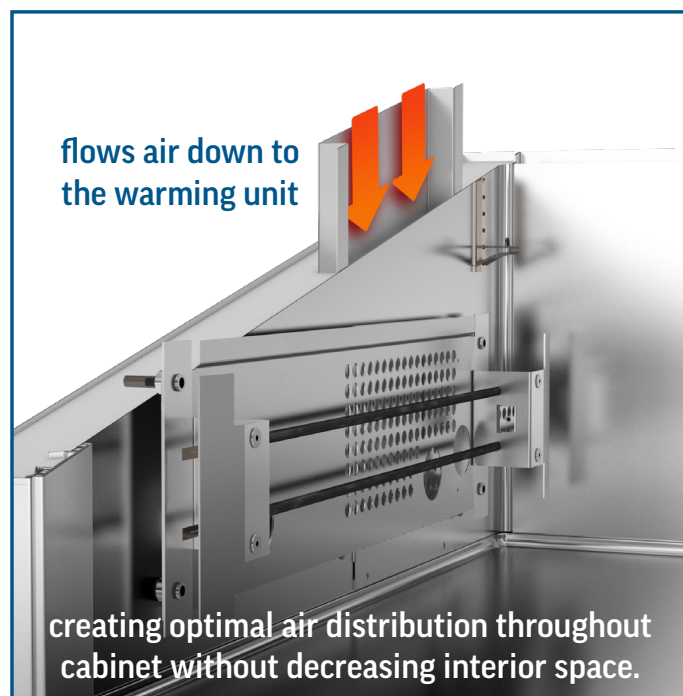
### **Heavy-Duty Cam Lift Hinges**

### **Stay-Open Door Feature**

For Easy Product Loading

### **3 Heavy-Duty Epoxy Coated Shelves**

per section



Illustrated with the safety shield removed to give a good view of the heating element and vent.



# P SERIES

## Spec Line Warming Cabinets



**Maximum resistance to wear and tear with stainless steel breaker caps and door liners**

**Modular interior gives maximum flexibility for shelf and slide combinations**

**7 Year parts and labor warranty**

**Stainless steel breakers**

**Full electronic control**

**Self-closing doors**

with 120° stay-open feature, on cam-lift hinges

**Built-in adjustable humidity control**

**Door locks standard**

for both Solid and Glass doors

**Magnetic gasket attached to each door**

for positive seal

**6" adjustable legs**

(3" casters or 6" caster option available at no charge when specified on order)

**3 chrome-plated wire shelves**

per section

**Removable access panel**

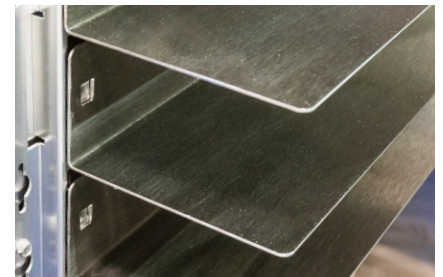
for ease of service and maintenance

**Temperature range from 80-180° F**



**TRAY SLIDES A AVAILABLE**

holds one 18x26" or two 14x18"



**TRAY SLIDES A/C AVAILABLE**

hold one 18x26", or two 14x18", or two 12x20"

# MARKETEER® SERIES

## Merchandiser Refrigerators



**Energy Star rated** (select models)

**Unique sizing options**

**3 Year warranty on parts & labor,  
5 year warranty on compressor**

**Double pane Low-E argon-filled glass doors**

**LED lighting**

creates dynamic product presentation

**Refrigerators have electro-mechanical control**

**Energy efficient and environmentally  
friendly R290 refrigerant**

**Energy Star rated**

(select models)

**Self-closing hinged doors**

with mechanical locks standard (MT21, MT41)

**Sliding glass doors available**

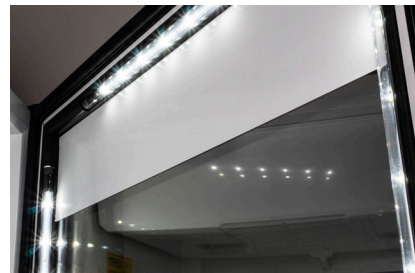
on select units

**Bottle Coolers now available** (MT41)



**MECHANICAL LOCKS**

standard on all hinged units  
(excluding MT21 models)



**BUILT-IN LED LIGHTS**

for dynamic product presentation



# MARKETMAX<sup>®</sup> SERIES

## Merchandiser Refrigerators & Freezers



### Also available with:

- **IQ Electronic Smart Lock**
- **Wine Specific Models with additional Wine Upgrades**

**Energy efficient R290 provides solution for all environmental concerns**

**Designed to perform in high ambient conditions**

### Double pane, lowE argon-filled glass doors

Freezers have triple pane

### Field-reversible (refrigerator only)

Requires additional hardware kit

### Self-closing doors

120° stay open feature

### LED lighting

creates dynamic product presentation

### Brightly lit sign panel

Custom door decals and signage available

### Full electronic temperature control

Energy efficient and environmentally friendly R290 refrigerant

5 epoxy coated wire shelves per section

1, 2 & 3 door model options available

Sliding glass doors available on select units

7 Year warranty on parts, labor, and warranty



**FULL ELECTRONIC CONTROL**  
with easy to read digital display



**BRIGHTLY LIT HEADER PANEL**  
to grab attention and increase sales

# DIPPING CABINETS



**R290 refrigerant provides low energy consumption and is environmentally friendly**

**3 Year warranty on parts & labor, 5 year warranty on compressor**

**Galvanized metal cabinet**  
with powder coated painted surface

**Easy-to-clean interior**

**Full electronic control**

**Sliding glass lids are LowE tempered**

**Lock and keys standard**

**2" Heavy-duty casters**  
allow easy and fast movement

**Drain plug for easy cleaning**

**Lexan sneeze guard**

**Heavy-duty PVC coated wire support racks**  
allows containers to be placed on top level for optimal storage

**Each rack designed to hold**  
multiple 3-gallon ice cream containers

**R290 refrigerant provides low energy consumption and is environmentally friendly**



**LID LOCKS STANDARD**  
for loss prevention



**LED LIGHTING**  
for dynamic product presentation



# NOVELTY CASES



**R290 refrigerant provides low energy consumption and is environmentally friendly**

**3 Year warranty on parts & labor, 5 year warranty on compressor**

**White coated steel exterior**

**White powder coated surface interior**

**R290 refrigerant provides low energy consumption**

**LED lighting**

**Adjustable thermostat**

**Operating temperature of -10°F**

**Angle top design with LowE tempered glass lids**

**Lids are easily removable**

**Lid lock & keys**

**Round exterior edges**

**Integrated tag molding**

**2" heavy duty casters**

**Drain plug for easy cleaning**

**Removable baskets**



**LID LOCKS STANDARD**

for loss prevention



**LED LIGHTING**

for dynamic product presentation

# COUNTERTOPS

## Refrigerators & Freezers



### CT96 Refrigerator

**Double pane, tempered glass door with locks**

**Heavy-duty black textured steel exterior**

with black plastic door frames

**Heavy-duty white epoxy coated steel interior**

**LED lighting**

creates dynamic product presentation

**3 epoxy coated shelves**

top 2 shelves are adjustable

**Full electronic temperature control with display**

**Refrigeration system uses R600a refrigerant**

to comply with all environmental concerns

**System is serviceable from the rear**

**Custom graphics available**

**1 year parts & labor warranty**

AGENCY CERTIFICATIONS



### CF3 Freezer

**Triple pane, tempered glass door**

**Pre-painted, steel interior and exterior for easy cleaning**

**LED lighting**

creates dynamic product presentation

**2 shelves standard**

one full & one half shelf

**Custom graphics available**

**2" leveling legs**

with up to 1" for leveling of the unit

**Refrigeration system uses R290 refrigerant**

to comply with all environmental concerns

**1 year parts & labor warranty**

AGENCY CERTIFICATIONS



### UCF20 Freezer

**Glass door provides clear merchandising of ice cream**

**Oversized refrigeration system holds -15°F product temperature**

**Full electronic control**

for enhanced defrost

AGENCY CERTIFICATIONS



**Forced air design does not require unit to undergo manual defrost**

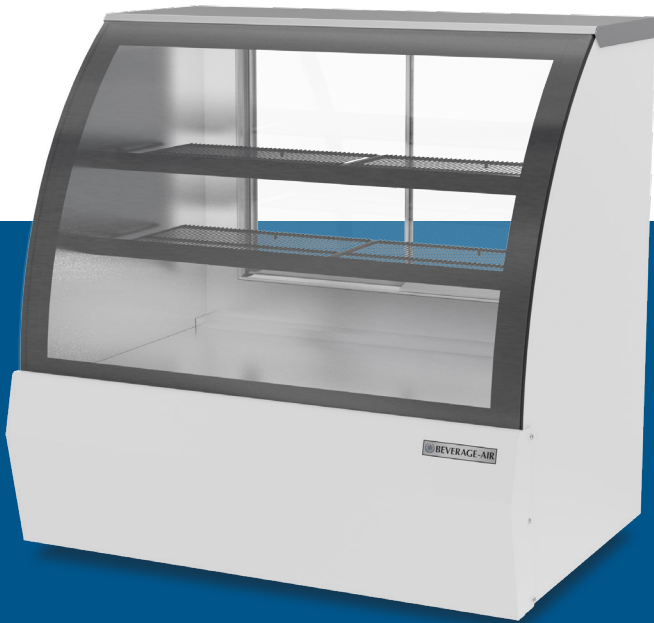
which is a major advantage to comparable cold wall freezers

**20" footprint for countertop**

or undercounter applications

**7 Year warranty on parts, labor, and compressor**

# DELI CASES



**Ideal for gourmet shops, bakeries, delicatessens and convenience stores**

**3 Year warranty on parts & labor, 5 year warranty on compressor**

**Open-food rated**

**Sliding rear glass doors, easily removed for cleaning**

**Curved front glass**

**Full electronic control**

**LED lighting with on and off switch**

**Additional electrical outlet for scale**

**Adjustable shelves for better product display**

**Price tag molding standard**

**Powder coated galvanized steel exterior**

**Stainless steel floor with mirrored interior end caps**



## **ACCESSIBLE OUTLET**

Conveniently located for secondary small equipment such as scales.



## **REMOVABLE SLIDING DOORS**

for easy maintenance and cleaning of the unit and doors.



# BREEZE™ SERIES



**Unique size suited for endcaps and schools**

**Custom graphics available**

**3 Year warranty on parts & labor,  
5 year warranty on compressor**

**Exterior finish is a heavy-duty steel**

with a durable, baked on black or white coating

**Curved design with open front & side shield**

to maximize product display

**Interior is white coated steel**

**2 recessed interior lights**

provide maximum product visibility

**3 epoxy coated shelves**

**Modern grille is easy to remove**

for cleaning or service

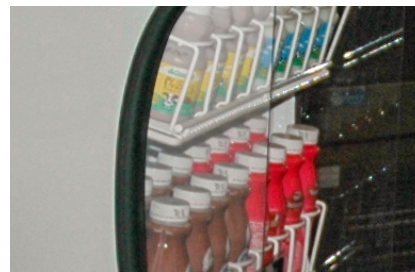
**Gravity-Flo organizer**

**Holds unit temperature from 32°-40°F**

**Certified for bottled beverage & packaged foods**

**Brightly lit sign panel**

**Featuring environmentally friendly  
energy-efficient R290 refrigerant**



**SIDE SHIELD**

to maximize product display



**GRAVITY-FLO**

organizer standard

# VUEMAX™ SERIES



**Ideal for gourmet shops, delicatessens,  
convenience stores & bakeries**

**3 Year warranty on parts & labor,  
5 year warranty on compressor**

**Heavy duty steel exterior**

with a durable paint finish

**Glass sides enhance product visibility**

from side viewpoints

**Foamed in place CFC-free polyurethane**

insulation enhances the structural strength of the cabinet and increases energy efficiency

**LED lighting**

enhances product illumination for maximum visibility

**Shelving display flexibility**

Shelves can be installed in two positions

**Full electronic temperature control**

from 36° -40°F, with display

**Certified for bottled beverage & packaged foods**

**Night curtain**

**Stylish impact bumper**

**Featuring environmentally friendly  
energy-efficient R290 refrigerant**



**SIDE SHIELD**

to maximize product display



**CUSTOM GRAPHICS AVAILABLE**

for brand or product promotion

# SALAD BARS



**Designed to perform in  
high ambient conditions**

**7 year warranty on parts, labor,  
and compressor**

## **Locking divider bars**

### **Lift-off lids standard**

to help maintain product temperature

### **Heavy-duty aluminum pan liner**

Easy to clean and prevents spills from falling into cabinet while also ensuring coldest air flows across bottom of pans

### **Field-reversible doors with 120 degree stay-open feature**

### **Two epoxy coated shelves per door section standard**

### **Snap-in door gaskets**

### **Accommodates up to 6" deep food service pans**

### **4" deep 1/3 size polycarbonate pans are included**

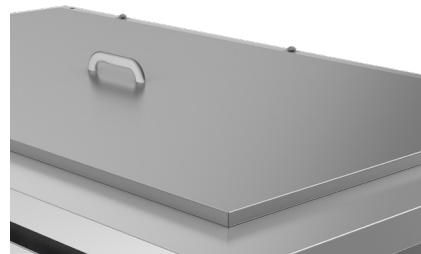
### **6" heavy duty casters standard**

3" casters or 6" leg option available  
at no charge when specified on order



### **PERFECT SEAL PAN LINER**

ensures airflow under pans and protects  
bottom of cabinet from pan spills



### **LIFT-OFF LIDS standard**

to help maintain product temperature



# SANDWICH PREP

## Food Prep Tables



**Designed to perform in high ambient conditions**

**7 year warranty on parts, labor, and compressor**

### Full electronic control

#### Heavy-duty aluminum pan liner

easy to clean and prevents spills from falling into cabinet while also ensuring coldest air flows across bottom of pans

#### Reversible cutting boards

1/2" thick, 10" deep

#### Locking divider bars

#### Field-reversible doors

with 120 degree stay-open feature

#### Two epoxy coated shelves

per door section standard

### Snap-in door gaskets

#### Accommodates up to 6" deep food service pans

4" deep 1/6 size polycarbonate pans are included

#### Heavy duty insulated covers

protects products and eliminates sweating when closed

#### 6" heavy duty casters standard

3" casters or 6" leg option available at no charge when specified on order



### PERFECT SEAL PAN LINER

ensures airflow under pans and protects bottom of cabinet from pan spills



### CLEAR LIDS AVAILABLE

for optimized product display

### STANDARD TOP

Two rows of food pans for easy access to ingredients. Perfect for smaller sandwich, salad or back of the house line service



### MEGA TOP

Three rows of food pans offer 50% more capacity than a standard top prep table. Ideal for users with a wide array of ingredients



### CUT TOP

An extra deep, 14" cutting board on a standard top unit offers additional workspace for larger item prep, catering or complicated menu items



# PIZZA PREP

## Pizza & Deli Prep Tables



**Low-profile design for enhanced ergonomics and product display**

**Improved airflow maintains consistent pan temperature in top rail**

**Designed to perform in high ambient conditions**

**Duct system features uniform airflow distribution**

over evaporator coil and throughout raised rail

**Electronic controller with smart-defrost**

**12-Gauge stainless steel drawer slides with Delrin® rollers rated at 275 lbs**

**Electrical defrost heater**

terminates defrost sooner, reducing product instability

**Right or left compressor placement**  
specify at time of order

**Field-reversible doors**

with 120 degree stay open feature

**Heavy-duty aluminum pan liner**

is easy to clean and prevents spills from falling into cabinet

**Accommodates up to 6" deep food service pans**

Not included

**Improved serviceability**

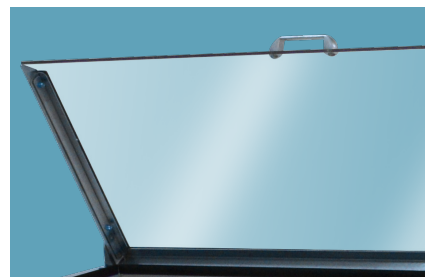
Removable service panel for easy access to refrigeration system

**Featuring environmentally friendly energy efficient R290 refrigerant**

**7 Year warranty on parts, labor, and warranty**



**3 DRAWERS IN SINGLE SECTION**  
available on all sizes



**CLEAR LIDS AVAILABLE**  
for optimized product display

# WORKTOPS

## Refrigerators & Freezers



**Designed to perform in  
high ambient conditions**

**7 year warranty on parts, labor,  
and compressor**

### **Stainless steel top**

(side-mount worktops come standard  
with 16-gauge stainless steel top)

### **Mechanical or Full electronic control**

- Mechanical controller standard in refrigerator units sizes 20-34
- Full electronic controller standard in refrigerator units sizes 36 and higher, and in all freezer and dual-temp units

### **Self-closing doors**

with 120° stay-open feature, on cartridge style hinges

### **Magnetic gasket**

attached to each door for positive seal

**Featuring environmentally friendly  
energy efficient R290 refrigerant**

**Two epoxy-coated steel  
wire shelves per section**

### **Field-reversible doors**

On select models

### **6" heavy duty casters**

various ADA compliant mounting options



### **REMOVABLE BACKSPLASH**

available as an option, as well as a Flat Top, or a Foamed-in-Place backsplash



**FIELD-REVERSIBLE DOORS**  
for layout flexibility



# UNDERCOUNTERS

## Refrigerators & Freezers



**Designed to perform in  
high ambient conditions**

**7 year warranty on parts, labor,  
and compressor**

**Undercounter units feature a 1/2"  
thick sub-top**

**Mechanical or Full electronic control**

- Mechanical controller standard in refrigerator units sizes 20-34
- Full electronic controller standard in refrigerator units sizes 36 and higher, and in all freezer and dual-temp units

**Interior thermometer**

**Self-closing doors**

with 120° stay-open feature, on cartridge style hinges

**Easy door removal for service and  
cleaning**

**Magnetic gasket attached to each  
door**

for positive seal

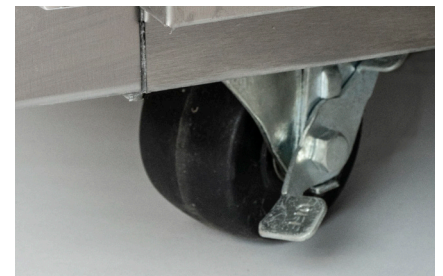
**6" heavy duty casters standard**

3" casters or 6" leg option available  
at no charge when specified on order

**Two epoxy-coated steel wire shelves**  
per section

**Field-reversible doors**

On select models



**3" CASTERS AVAILABLE**  
at no charge when specified at the  
time of order



**FIELD-REVERSIBLE DOORS**  
for layout flexibility

# CHEF BASES

Refrigerators, Freezers & Cross Temp®



**Designed to perform in high ambient conditions**

**7 year warranty on parts, labor, and compressor**

**LIFETIME WARRANTY on all drawers and slides (parts only)**

**12-gauge stainless steel drawer slides with Delrin® rollers rated at 275 lbs**

**Heavy-duty, fireproof, insulated 16-gauge top with fully integrated heat-shield**

(must adhere to manufacturer's clearance)

**Compressor available on left or right side**

(specify at time of order)

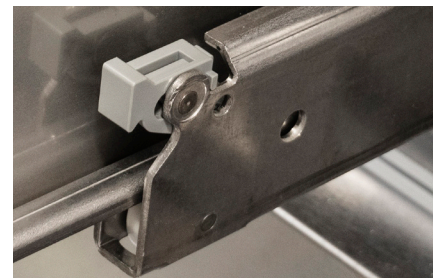
**Consistent product temperature with intelligent airflow design**

**Improved drawer systems for easier installation, field adjustment, and increased pan capacity**

**Full refrigeration system serviceability from the front of the cabinet, eliminating the need to remove the lid**

**Accommodates 6-inch-deep full-size food service pans in top & bottom drawers**

**Featuring environmentally friendly energy-efficient R290 refrigerant**



**12-GAUGE DRAWER SLIDES**  
with 3 Delrin encased stainless steel roller bearings per each drawer slide



**ACCOMMODATES 6" PANS IN**  
top and bottom drawers

# BAR MOBILES



**Wide variety of options and accessories**  
**7 year warranty on parts, labor, and compressor**

**Stainless steel drip tray for easy cleaning**

**Heavy-duty stainless steel floor**

**Stainless steel top with black glass rails**

**4" casters**

**Mechanical control - BM23**

**Full electronic control - DZ24**

**Interior thermometer**

**Tower has continuous source of cold air**

**Portable unit with waste bottle**

for beer and wine from drain

**Self-closing doors with locks**

**Field-reversible door**

**Magnetic gasket attached to each door**

for positive seal



**PORTABLE WASTE BOTTLE**  
for beer and wine from drain



**STAINLESS STEEL DRIP TRAY**  
for easy cleaning



# DIRECT DRAWS



## 3-IN-1 DRAFT SOLUTIONS

Dispense beer, wine, or coffee (other non-alcoholic beverages) with the same tap—no line/manifold changes needed!

**Wide variety of options and accessories**  
**7 year warranty on parts, labor, and compressor**

**Stainless steel top with drip tray**

**Galvanized steel interior liner**

with heavy duty stainless steel floor

**Full electronic control**

(except DD24 which has mechanical control)

**Drain tube located at bottom front of cooler**

connects to floor drain

**Self-closing doors with locks**

**Magnetic gasket attached to each door**

for positive seal

**Field-reversible door**

**Compressor available on left or right side**

specify at time of order



## LEFT OR RIGHT COMPRESSOR

Specify which side the compressor should be located at time of order



## DRAIN TUBE

bottom front of cooler (condensor side) and connects directly to floor drain

# BACK BAR COOLERS



**Wide variety of options and accessories**  
**7 year warranty on parts, labor, and compressor**

**Galvanized Steel Interior**

**Stainless Steel Floor**

**Full electronic control**

(except BB24 which has mechanical control)

**Compressor Available Left or Right Side**

specify at time of order  
right side only on pass-thru models

**LED Lighting**

**Two Epoxy Coated Shelves per section**

**Stay Open Door and Locks**

**Field-reversible Doors**

on select models

**Sliding Glass Doors**

on select models (door frames only come in black)

**Pass Thru Models Available**

**Magnetic gasket attached to each door**  
for positive seal



**LEFT OR RIGHT COMPRESSOR**

Specify which side the compressor should be located at time of order; right side only on pass-thru's



**OPEN FOOD RATED MODELS**  
for increased storage options

# BOTTLE COOLERS



**Heavy-duty sliding lids**

**7 year warranty on parts, labor, and compressor**

**Galvanized steel interior and floor**

**Full electronic temperature control**

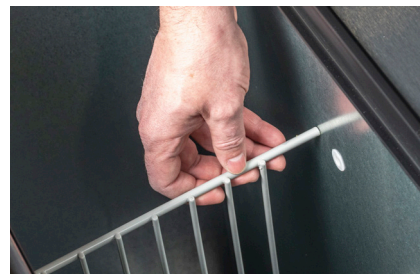
**100% Metal lids**

reinforced to prevent bowing

**Stainless steel top**

**Bottle opener and cap catcher standard**

**Adjustable wire dividers**



**ADJUSTABLE DIVIDERS**

to organize cooler to meet your specific needs



**100% METAL LIDS**

reinforced to prevent bowing



# GLASS & PLATE CHILLERS



**Heavy-duty sliding lids**

**7 year warranty on parts, labor, and compressor**

**Front or top loading**

**Interior thermometer**

**Self-closing door with 120° stay-open feature**  
(Front Loading Models)

**Field-reversible door**  
(Front Loading Models)

**Easy door removal**  
for service and cleaning (Top Loading)

**Magnetic gasket attached to each door**  
for positive seal

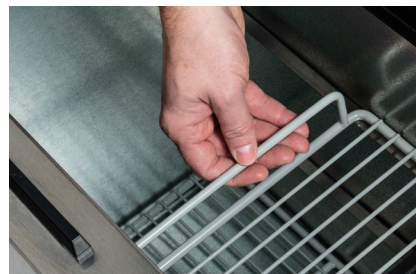
**Auto-defrost**

**Built-in Condensate Evaporator System**

**Operating Temperature -10F**

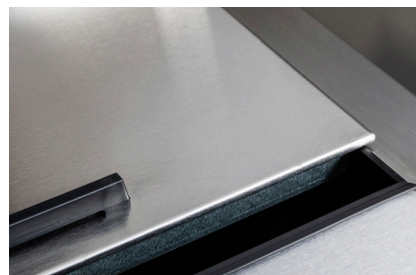
**Two Epoxy Coated Shelves**

**R290 Refrigerant**



**ADJUSTABLE DIVIDERS**

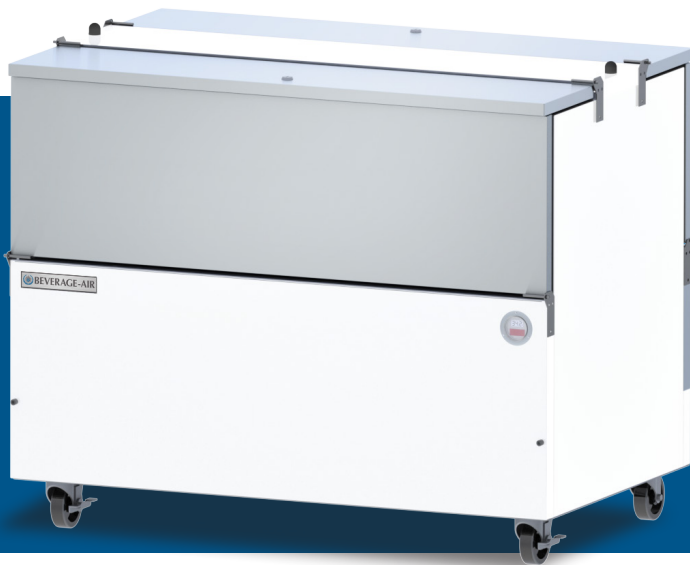
to organize cooler to meet your specific needs



**100% METAL LIDS**

reinforced to prevent bowing (GF models)

# MILK COOLERS



**One-piece bottom for maximum support**

**7 year warranty on parts, labor, and compressor**

**CFC & HCFC-free insulation is foamed-in-place**

for increased structural strength & energy efficiency

**Epoxy coated, steel wire racks included**

for added floor protection

**Flexible compression door gaskets**

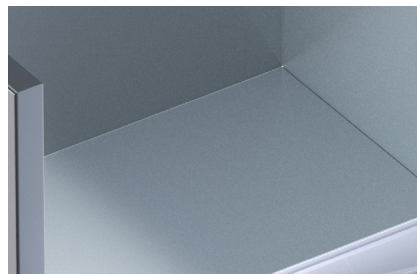
ensure a tight seal for added temperature control

**Cylinder Locks**

**Bottom drain for connection to drain hose and easy cleaning**

**External digital thermometer**

**Coolers hold milk between 36°-38°F**  
until ready to serve for maximum refreshment



**ONE-PIECE REINFORCED FLOOR**

for maximum milk crate support and made with stainless steel



**SINGLE AND DUAL ACCESS**

models available

# BLAST CHILLERS/SHOCK FREEZERS

Self-Contained



## NOW WITH R290 REFRIGERANT

Stainless steel exterior and interior

Die-formed interior floor

Central drain for easy cleaning

Automatic recognition of core probe

HACCP alarm display button

Timed manual defrost button

Automatic product storing at end of cycle

Up to 99 custom programmable cycles

5" Touchscreen LCD Display (RBS models)

Electronic control board display (CF model)

High precision heated multi sensor probe

3 Year Warranty parts and labor

5 Year Warranty on compressor



## CORE PROBE

measures product temperature



## INTUITIVE PROGRAMMABLE DISPLAY

5" touchscreen on RBS models

Electronic control on CF model



# BLAST CHILLER/FREEZER/THAWER

## Self-Contained



*Shown with optional ramp*

**5" High Definition, Easy-To-Use Touch Display**  
**Blast Chilling, Shock Freezing, Thawing Mode**  
**Self-Contained R404A Refrigeration System**

### **Stainless Steel Exterior And Interior**

Rounded interior corners for proper cleaning

### **High Density, Polyurethane Insulation**

### **Hinged Door With Gasket**

with Closing Ramp System and Ergonomic Vertical Door Handle

### **Anti-Condensation Resistance**

Placed On The Door Under The Gasket

### **Stainless Steel Door Liner**

### **Thick Stainless Steel Internal Bumper**

to Avoid Damage Caused By The Cart

### **Die-Formed Leak-Proof Floor**

### **Heated Core Probe**

with 4 Measuring Points

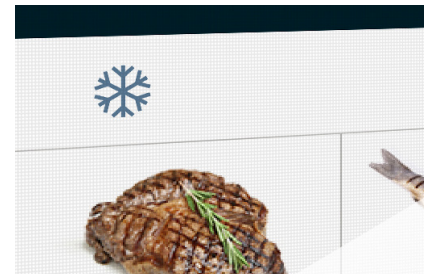
### **Customized Blast Chilling, Blast Freezing and Thawing Cycles**

320 cycles can be memorized

### **USB Connection**

for Uploading And Downloading Data And Recipes

### **3 Year Warranty parts and labor 5 Year Warranty on compressor**



### **EXPANDABILITY AND CONTROL**

easily add, edit or rename recipes, all organized by product type and function



### **TOUCH CONTROL PHOTO MENU**

is easy to use, and the function selection is immediate and intuitive

# THE BEVERAGE-AIR DIFFERENCE

**WE STRIVE TO SET OURSELVES APART FROM THE COMPETITION BY DELIVERING UNMATCHED VALUE AND SERVICE TO OUR CUSTOMERS**

## **Designed to Perform in High Ambient Locations**

When kitchens heat up, Beverage-Air refrigerators and freezers are there to keep things cool

## **R290 Refrigerant**

Increased energy efficiency and better for the environment

## **Largest Breadth of Product Offering**

If there's a need for a commercial refrigerator, Beverage-Air has the right unit

## **Huge Assortment of Standard Units**

Our range of standard units includes many unique items

## **Custom Models**

If we don't have a standard solution that fits, we can build custom units to spec

## **Celebrating Over 75 Years of Quality & Innovation**

We've been at this a long time, and our legacy shows in the quality of our machines

## **Unmatched, Award Winning Customer Service & Support**

Our team has been recognized by every major buying group for our excellent service

## **Dedicated Service Center**

We're here when you need us

## **ANY Certified Refrigeration Contractor Can Work On Beverage-Air Under Warranty**

Helps ensure consistent field service

## **Equipment & Accessories Receive Your Same Discount**

We make sure you're getting the best value for everything you purchase

## **Online Warranty Registration & Processing**

With 24-Hour Acknowledgement

# CONTACT US

Contact	Office	Cell	Email Address	Responsibility
Logan Noll		724-312-2871	lnoll@alirefna.com	Director of Sales
Madi Nommsen		336-793-6282	mnommsen@alirefna.com	Regional Sales Manager
Daniel Short		434-390-6428	dshort@alirefna.com	Regional Sales Manager
Alicia Glick		260-316-1085	aglick@alirefna.com	Regional Sales Manager
Mitch Carb	336-245-6464	989-493-2778	mcarb@alirefna.com	VP of Marketing & Project Management
Sean Larkin	336-245-6418	336-340-5627	slarkin@alirefna.com	Marketing Manager
Joann LaPort	336-245-6404	336-831-4591	jlaport@alirefna.com	Sales Coordinator
Ann Radick	336-245-6443	864-237-0456	aradick@alirefna.com	Director of Customer Relations
Alex Vogler	336-245-6449		avogler@alirefna.com	Director of Technical Services & Quality
Trae Bailey	336-245-6400 ext. 16465		tbailey@alirefna.com	Warranty/Dispatch Supervisor

## Customer Service Team

Keri McCarroll – kmccarroll@alirefna.com

Debra Goins – dgoins@alirefna.com

Chris Faulwatter – cfaulwatter@alirefna.com

Melissa Frye – mfrye@alirefna.com

## Technical Service Team

Luke Hopper – lhopper@alirefna.com

Cedric Leverett – cleverett@alirefna.com

Kevin Arrieta – karrieta@alirefna.com

Jeffrey Kachmar – jkachmar@alirefna.com

Jake Wallace – jwallace@alirefna.com

Jared Kallam – jkallam@alirefna.com

Richard Cain – rcain@alirefna.com

## Warranty Dispatch

Summer Riley – sriley@alirefna.com

Carson Patella – cpatella@alirefna.com

Stephanie Giampetro – sgiampetro@alirefna.com

## Factory Headquarters Sales Office

3779 Champion Blvd  
Winston-Salem, NC 27105  
Phone: (336) 245-6400  
Fax: (336) 245-6453  
Email: sales@bevair.com  
Web: www.beverage-air.com

## Factory Customer Service

Phone: (888) 845-9800  
Fax: (800) 253-5168

## Factory Technical Service

Phone: (800) 684-1199  
Fax: (800) 262-9381

## Warranty Dispatch

(877) 866-1223

## Manufacturing Facility

1028 Route 28  
Brookville, PA 15825





# BEVERAGE-AIR®

**2025 PRODUCT OVERVIEW**