



# BEVERAGE-AIR®

**2024 PRODUCT OVERVIEW**



# BEVERAGE-AIR®

## BREADTH OF PRODUCTS

### Top Mount Reach-Ins

|       |                   |
|-------|-------------------|
| HR/HF | Horizon Series    |
| PR/PF | P Series          |
| CT    | Cross Temp Series |

### Bottom Mount Reach-Ins

|         |                |
|---------|----------------|
| RB/FB   | Vista Series   |
| HBR/HBF | Horizon Series |
| RI      | RI Series      |

### Warming Cabinets

|    |                |
|----|----------------|
| HH | Horizon Series |
| PH | P Series       |

### Glass Door Merchandisers

|        |                  |
|--------|------------------|
| MT     | Marketeer Series |
| MM     | MarketMax Series |
| BDC/NC | Dipping Cabinets |
| CF/CT  | Countertop Units |

### Deli Cases

|     |            |
|-----|------------|
| CDR | Deli Cases |
|-----|------------|

### Open Air Merchandisers

|    |               |
|----|---------------|
| BZ | Breeze Series |
| VM | VueMax        |

### Food Prep Tables

|       |                      |
|-------|----------------------|
| SPE   | Sandwich Prep Tables |
| DP    | Pizza Prep Tables    |
| SPE-S | Salad Bars           |

### Worktops & Undercounters

|         |               |
|---------|---------------|
| WTR/WTF | Worktops      |
| UCR/UCF | Undercounters |

### Chef Bases

|             |            |
|-------------|------------|
| WTRCS/WTFCS | Chef Bases |
|-------------|------------|

### Bar & Wine Equipment

|           |                       |
|-----------|-----------------------|
| DD/DZ/BM  | Direct Draw           |
| BM23/DZ24 | Bar Mobile            |
| BB/DZ     | Back Bar              |
| DW        | Bottle Coolers        |
| GF/FLG    | Glass & Plate Chiller |

### Milk Coolers

|        |               |
|--------|---------------|
| SM/SMF | Single Access |
| ST/STF | Dual Access   |

### Blast Chillers / Shock Freezers

|       |                              |
|-------|------------------------------|
| CF/BF | Self Contained               |
| BF    | Remote                       |
| BF200 | Blast Chiller/Freezer/Thawer |







**BEVERAGE-AIR**

Beverage-Air has a full range of premium refrigeration and food service equipment solutions to meet the diverse needs of restaurant, chain, retail, convenience store, educational, and healthcare settings.

# 360° SERVICE SUPPORT

**MEETING ALL YOUR SERVICE NEEDS WITH IMPROVED SERVICE TECH DISPATCH & WARRANTY PROCESS**



### **Service School**

Our Technical Service team is doing hands-on service training in the field

### **First-Time Fix Program**

Implemented a reward system for service tech companies that fix the issue on the first service call

### **R290 Service Providers**

Ensuring service techs are certified and trained on R290 refrigerant

### **Service Locator on Website**

Up-to-date service provider list on website

# HORIZON® SERIES

## Top Mount Refrigerators & Freezers



**Designed to perform in high ambient conditions**

**3 year parts and labor warranty with an additional 4 year compressor part warranty**

**Made in USA**

### **Heavy Duty Construction**

2" CFC and HCFC-free foamed-in place polyurethane insulation

### **Full electronic Control**

with one-touch defrost

### **Multiple finish options**

### **Door locks standard**

Solid doors only (optional on glass door models)

### **Field-reversible doors**

Solid doors only

### **Cam-lift hinges**

with 120 degree stay open feature

**Sealed system makes service and maintenance quick and easy**

**LED lighting standard**

**Back rack airflow distribution system**

**Self-closing doors**

**6" heavy duty casters standard**

3" casters or 6" leg option available at no charge when specified on order

**Environmentally friendly, energy efficient R290 refrigerant**



### **BACK CHANNEL**

to promote air flow



### **FIELD-REVERSIBLE DOORS**

for flexibility to get your kitchen set up exactly how you want it

# P SERIES

## Spec Line Refrigeration



**Maximum resistance to wear and tear with stainless steel breaker caps and door liners**

**Configurable interior gives ultimate flexibility for shelf and slide combinations**

**3 year parts and labor warranty with an additional 4 year compressor part warranty**

### **LED lighting**

### **Full electronic control**

### **Self-closing doors**

with 120° stay-open feature, on cam-lift hinges

### **Expansion valve technology**

Freezer only

### **Door locks standard**

Solid and Glass doors

### **Magnetic gasket attached to each door**

for positive seal

### **Sealed system makes service and maintenance quick and easy**

### **6" adjustable legs**

(3" casters or 6" caster option available at no charge when specified on order)

### **3 epoxy coated wire shelves**

per section

### **Removable access panel**

for ease of service and maintenance



### **TRAY SLIDES A AVAILABLE**

holds one 18x26" or two 14x18"



### **TRAY SLIDES A/C AVAILABLE**

hold one 18x26", or two 14x18", or two 12x20"

# CROSS TEMP<sup>®</sup> SERIES

## Convertible Refrigeration



**NEW 2-SECTION SIZE!**

**Variable speed compressor technology achieves up to 30% more energy efficiency compared to a single-speed**

**3 year parts and labor warranty with an additional 4 year compressor part warranty**

**Temperature range of -15 to 40° F**

**Modulates coil temp to achieve desired set point**  
while achieving maximum energy efficiency

**Single cabinet configurable to all menu initiatives**

**Intuitive compressor**  
adjusts for optimal effectiveness in high-use situations

**Quicker pull-down**  
for both air and product temperatures

**Improved product stability**

**Smart-defrost**

**Expansion valve**

**Rapid-recovery after defrost**  
consistent product temperature and ensures food quality

**Door locks standard**  
Solid doors only (optional on glass door models)

**Field-reversible doors**  
(except for CT12-12HC models)

**Featuring environmentally friendly energy efficient R290 refrigerant**



**EASY-TO-USE CONTROLLER**  
to quickly adjust set points



**VARIABLE SPEED SYSTEM**  
modulates coil temp

# VISTA® SERIES

## Bottom Mount Refrigerators & Freezers



**Designed to perform in high ambient conditions**

**3 year parts and labor warranty with an additional 4 year compressor part warranty**

**Made in USA**

**Full electronic control**

**Door locks standard**

(solid doors only, optional on glass door models)

**One piece grille**

**Cartridge style door hinges**

with 120 degree stay-open feature

**LED lighting standard**

**Self-closing doors**

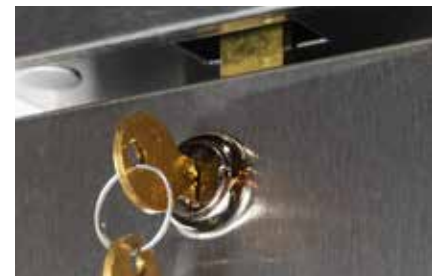
**Right and Left hinged models available**

(specify at time of order)

**6" heavy duty casters standard**

(3" casters or 6" leg option available at no charge when specified on order)

**Environmentally friendly, energy efficient R290 refrigerant**



**DOOR LOCKS STANDARD**

on solid door units for loss prevention (available as an option for glass doors)



**FULL ELECTRONIC CONTROL**

with easy to read digital display



# HORIZON<sup>®</sup> SERIES

## Bottom Mount Refrigerators & Freezers



**Designed to perform in high ambient conditions**

**3 year parts and labor warranty with an additional 4 year compressor part warranty**

**Made in USA**

### **Heavy Duty Construction**

(2" CFC and HCFC-free foamed-in place polyurethane insulation)

### **Full electronic Control**

with one-touch defrost

### **Door locks standard**

(solid doors only, optional on glass door models)

### **Cartridge-style hinges**

with 120 degree stay open feature

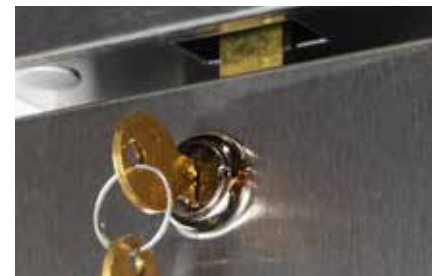
### **LED lighting standard**

### **Self-closing doors**

### **6" heavy duty casters standard**

(3" casters or 6" leg option available at no charge when specified on order)

### **Environmentally friendly, energy efficient R290 refrigerant**



### **DOOR LOCKS STANDARD**

on solid door units for loss prevention (available as an option for glass doors)



### **FULL ELECTRONIC CONTROL**

with easy to read digital display



# RI SERIES

## Bottom Mount Refrigerators



**Designed to perform in  
high ambient conditions**

**3 year parts and labor warranty  
with an additional 4 year  
compressor part warranty**

**Made in USA**

### **Compact design**

to fit challenging kitchen layouts

### **Heavy Duty Construction**

(2" CFC and HCFC-free foamed-in place polyurethane insulation)

### **Cartridge-style hinges**

with 120 degree stay open feature

### **LED lighting standard**

### **Self-closing doors**

### **6" heavy duty casters standard**

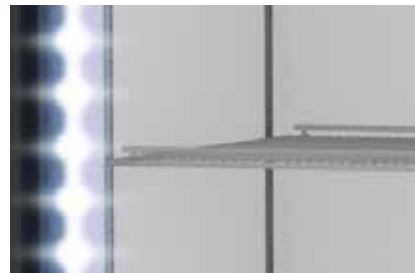
(3" casters or 6" leg option available at no charge when specified on order)

**Uses environmentally friendly,  
energy efficient R290 refrigerant**



### **FULL ELECTRONIC CONTROL**

with easy to read digital display



### **BUILT-IN LED LIGHTS**

Improved LED lighting for better product display

# HORIZON® SERIES

## Warming Cabinets



**Optimal airflow for consistent cabinet temperature**

**3 year parts and labor warranty**

**Made in USA**

### **Adjustable Electronic Temp Control**

From 80°F To 180°F

### **Built-In Adjustable Humidity Control Vent**

### **Safety Shielded Strip Type Heating Elements**

### **Externally Mounted Blower**

Maintains Even Temperatures

### **Stainless Steel Front**

With Gray Painted Galvanized Sides

### **Corrosion Resistant Aluminum Interior**

### **Stainless Steel Breaker Caps**

### **Snap-In Magnetic Door Gasket**

### **Heavy-Duty Cam Lift Hinges**

### **Stay-Open Door Feature**

For Easy Product Loading

### **3 Heavy-Duty Epoxy Coated Shelves**

per section

flows air down to  
the warming unit

creating optimal air distribution throughout cabinet without decreasing interior space.

Illustrated with the safety shield removed to give a good view of the heating element and vent.

# P SERIES

## Spec Line Warming Cabinets



**Maximum resistance to wear and tear with stainless steel breaker caps and door liners**

**Modular interior gives maximum flexibility for shelf and slide combinations**

**3 Year parts and labor warranty**

**Stainless steel breakers**

**Full electronic control**

**Self-closing doors**

with 120° stay-open feature, on cam-lift hinges

**Built-in adjustable humidity control**

**Door locks standard**

for both Solid and Glass doors

**Magnetic gasket attached to each door**

for positive seal

**6" adjustable legs**

(3" casters or 6" caster option available at no charge when specified on order)

**3 chrome-plated wire shelves**

per section

**Removable access panel**

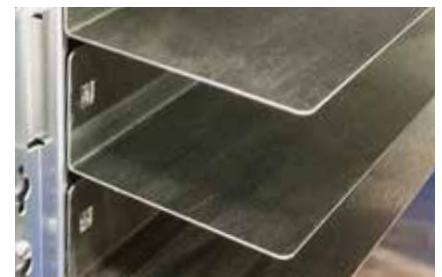
for ease of service and maintenance

**Temperature range from 80-180° F**



**TRAY SLIDES A AVAILABLE**

holds one 18x26" or two 14x18"



**TRAY SLIDES A/C AVAILABLE**

hold one 18x26", or two 14x18", or two 12x20"

# MARKETEER® SERIES

## Merchandiser Refrigerators & Freezers



**NEW SIZES  
AVAILABLE**

**Energy Star rated** (select models)

**Unique sizing options**

**3 year parts and labor warranty  
with an additional 4 year  
compressor part warranty**

**Triple pane Low-E argon-filled glass doors on  
freezers; Double pane on refrigerators**

**LED lighting**

creates dynamic product presentation

**Refrigerators have electro-mechanical control**

**Freezers have full electronic control**

**Energy efficient and environmentally  
friendly R290 refrigerant**

(except for 1H6 models, which use R600)

**Energy Star rated**

(select models)

**Self-closing hinged doors**

with mechanical locks standard (except MT06, MT21, MT41)

**Sliding glass doors available**

on select units

**NEW! Bottle Coolers now available** (MT41)



**MECHANICAL LOCKS**

standard on all hinged units  
(excluding MT21 models)



**BUILT-IN LED LIGHTS**

for dynamic product presentation



# MARKETMAX<sup>®</sup> SERIES

## Merchandiser Refrigerators & Freezers



### Also available with:

- IQ Electronic Smart Lock
- Wine Specific Models with additional Wine Upgrades

**Energy efficient R290 provides solution for all environmental concerns**

**Designed to perform in high ambient conditions**

**Made in USA**

### Double pane, lowE argon-filled glass doors

Freezers have triple pane

### Field-reversible (refrigerator only)

Requires additional hardware kit

### Self-closing doors

120° stay open feature

### LED lighting

creates dynamic product presentation

### Brightly lit sign panel

### Custom door decals and signage available

### Full electronic temperature control

### Energy efficient and environmentally friendly R290 refrigerant

### 5 epoxy coated wire shelves per section

### 1, 2 & 3 door model options available

### Sliding glass doors available on select units



**FULL ELECTRONIC CONTROL**  
with easy to read digital display



**BRIGHTLY LIT HEADER PANEL**  
to grab attention and increase sales

# DIPPING CABINETS



**R290 refrigerant provides low energy consumption and is environmentally friendly**

**3 year parts and labor warranty with an additional 4 year compressor part warranty**

**Galvanized metal cabinet**

with powder coated painted surface

**Easy-to-clean interior**

**Full electronic control**

**Sliding glass lids are LowE tempered**

**Lock and keys standard**

**2" Heavy-duty casters**

allow easy and fast movement

**Drain plug for easy cleaning**

**Lexan sneeze guard**

**Heavy-duty PVC coated wire support racks**

allows containers to be placed on top level for optimal storage

**Each rack designed to hold**

multiple 3-gallon ice cream containers

**R290 refrigerant provides low energy consumption and is environmentally friendly**



**LID LOCKS STANDARD**

for loss prevention



**LED LIGHTING**

for dynamic product presentation

# NOVELTY CASES



**R290 refrigerant provides low energy consumption and is environmentally friendly**

**3 year parts and labor warranty with an additional 4 year compressor part warranty**

**White coated steel exterior**

**White powder coated surface interior**

**R290 refrigerant provides low energy consumption**

**LED lighting**

**Adjustable thermostat**

**Operating temperature of -10°F**

**Angle top design with LowE tempered glass lids**

**Lids are easily removable**

**Lid lock & keys**

**Round exterior edges**

**Integrated tag molding**

**2" heavy duty casters**

**Drain plug for easy cleaning**

**Removable baskets**



**LID LOCKS STANDARD**

for loss prevention



**LED LIGHTING**

for dynamic product presentation

# COUNTERTOPS

## Refrigerators & Freezers



### CT96 Refrigerator

**Double pane, tempered glass door with locks**

**Heavy-duty black textured steel exterior**

with black plastic door frames

**Heavy-duty white epoxy coated steel interior**

**LED lighting**

creates dynamic product presentation

**3 epoxy coated shelves**

top 2 shelves are adjustable

**Full electronic temperature control with display**

**Refrigeration system uses R600a refrigerant**

to comply with all environmental concerns

**System is serviceable from the rear**

**Custom graphics available**

**1 year parts & labor warranty**

AGENCY CERTIFICATIONS



Intertek Intertek



### CF3 Freezer

**Triple pane, tempered glass door**

**Pre-painted, steel interior and exterior**  
for easy cleaning

**LED lighting**

creates dynamic product presentation

**2 shelves standard**

one full & one half shelf

**Custom graphics available**

**2" leveling legs**

with up to 1" for leveling of the unit

**Refrigeration system uses R290 refrigerant**

to comply with all environmental concerns

**1 year parts & labor warranty**

AGENCY CERTIFICATIONS



UL US

AGENCY CERTIFICATIONS



UL US

UL US

UL EPH

**Forced air design does not require unit to undergo manual defrost**

which is a major advantage to comparable cold wall freezers

**20" footprint for countertop**

or undercounter applications

**3 year parts and labor warranty / additional 4 year compressor warranty**



### UCF20 Freezer

**Glass door provides clear merchandising of ice cream**

**Oversized refrigeration system holds -15°F product temperature**

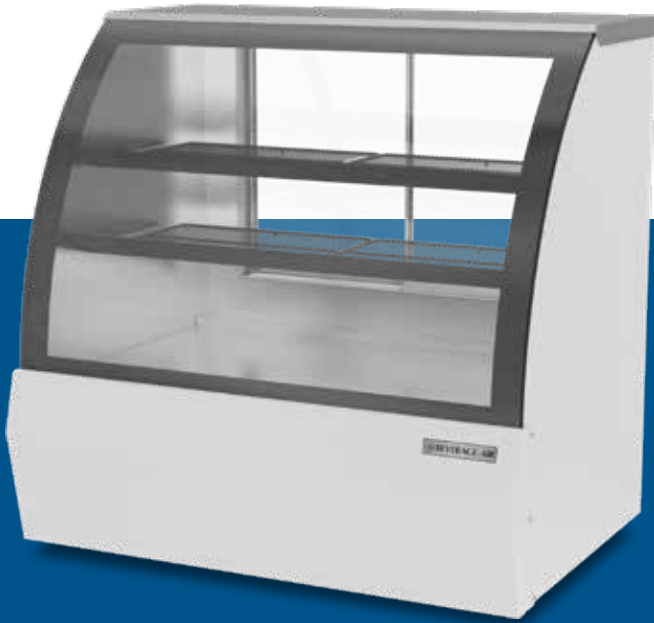
**Full electronic control**

for enhanced defrost





# DELI CASES



**Ideal for gourmet shops, bakeries, delicatessens and convenience stores**

**3 year parts and labor warranty with an additional 4 year compressor part warranty**

**Open-food rated**

**Sliding rear glass doors, easily removed for cleaning**

**Curved front glass**

**Full electronic control**

**LED lighting with on and off switch**

**Additional electrical outlet for scale**

**Adjustable shelves for better product display**

**Price tag molding standard**

**Powder coated galvanized steel exterior**

**Stainless steel floor with mirrored interior end caps**



## **ACCESSIBLE OUTLET**

Conveniently located for secondary small equipment such as scales.



## **REMOVABLE SLIDING DOORS**

for easy maintenance and cleaning of the unit and doors.

# BREEZE™ SERIES



**Unique size suited for endcaps and schools**

**Custom graphics available**

**3 year parts and labor warranty with an additional 4 year compressor part warranty**

**Exterior finish is a heavy-duty steel**  
with a durable, baked on black or white coating

**Curved design with open front & side shield**  
to maximize product display

**Interior is white coated steel**

**2 recessed interior lights**  
provide maximum product visibility

**3 epoxy coated shelves**

**Modern grille is easy to remove**  
for cleaning or service

**Gravity-Flo organizer**

**Holds unit temperature from 32°-40°F**

**Certified for bottled beverage & packaged foods**

**Brightly lit sign panel**

**Featuring environmentally friendly energy-efficient R290 refrigerant**



**SIDE SHIELD**  
to maximize product display



**GRAVITY-FLO**  
organizer standard



# VUEMAX™ SERIES



**Ideal for gourmet shops, delicatessens,  
convenience stores & bakeries**

**3 year parts and labor warranty  
with an additional 4 year  
compressor part warranty**

## **Heavy duty steel exterior**

with a durable paint finish

## **Glass sides enhance product visibility**

from side viewpoints

## **Foamed in place CFC-free polyurethane**

insulation enhances the structural strength of the cabinet and increases energy efficiency

## **LED lighting**

enhances product illumination for maximum visibility

## **Shelving display flexibility**

Shelves can be installed in two positions

## **Full electronic temperature control**

from 36° -40°F, with display

## **Certified for bottled beverage & packaged foods**

## **Night curtain**

## **Stylish impact bumper**

**Featuring environmentally friendly  
energy-efficient R290 refrigerant**



## **SIDE SHIELD**

to maximize product display



## **CUSTOM GRAPHICS AVAILABLE**

for brand or product promotion

# SALAD BARS



**Designed to perform in high ambient conditions**

**3 year parts and labor warranty with an additional 4 year compressor part warranty**

**Made in USA**

## **Locking divider bars**

### **Lift-off lids standard**

to help maintain product temperature

### **Heavy-duty aluminum pan liner**

Easy to clean and prevents spills from falling into cabinet while also ensuring coldest air flows across bottom of pans

### **Field-reversible doors with 120 degree stay-open feature**

### **Two epoxy coated shelves**

per door section standard

### **Snap-in door gaskets**

### **Accommodates up to 6" deep food service pans**

### **4" deep 1/3 size polycarbonate pans are included**

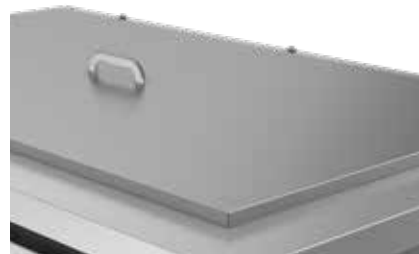
### **6" heavy duty casters standard**

3" casters or 6" leg option available at no charge when specified on order



### **PERFECT SEAL PAN LINER**

ensures airflow under pans and protects bottom of cabinet from pan spills



### **LIFT-OFF LIDS standard**

to help maintain product temperature



# SANDWICH PREP

## Food Prep Tables



**Designed to perform in high ambient conditions**

**3 year parts and labor warranty with an additional 4 year compressor part warranty**

### Full electronic control

#### Heavy-duty aluminum pan liner

easy to clean and prevents spills from falling into cabinet while also ensuring coldest air flows across bottom of pans

#### Reversible cutting boards

1/2" thick, 10" deep

#### Locking divider bars

#### Field-reversible doors

with 120 degree stay-open feature

#### Two epoxy coated shelves

per door section standard

### Snap-in door gaskets

#### Accommodates up to 6" deep food service pans

4" deep 1/6 size polycarbonate pans are included

#### Heavy duty insulated covers

protects products and eliminates sweating when closed

#### 6" heavy duty casters standard

3" casters or 6" leg option available at no charge when specified on order

### Made in USA



#### PERFECT SEAL PAN LINER

ensures airflow under pans and protects bottom of cabinet from pan spills



#### CLEAR LIDS AVAILABLE

for optimized product display

#### STANDARD TOP

Two rows of food pans for easy access to ingredients. Perfect for smaller sandwich, salad or back of the house line service



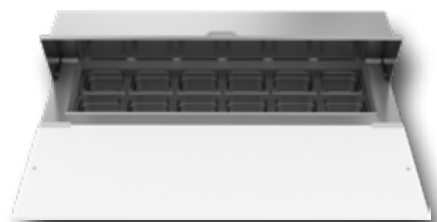
#### MEGA TOP

Three rows of food pans offer 50% more capacity than a standard top prep table. Ideal for users with a wide array of ingredients



#### CUT TOP

An extra deep, 14" cutting board on a standard top unit offers additional workspace for larger item prep, catering or complicated menu items



# PIZZA PREP

## Pizza & Deli Prep Tables



**Low-profile design for enhanced ergonomics and product display**

**Improved airflow maintains consistent pan temperature in top rail**

**Designed to perform in high ambient conditions**

**Duct system features uniform airflow distribution**

over evaporator coil and throughout raised rail

**Electronic controller with smart-defrost**

**12-Gauge stainless steel drawer slides with Delrin® rollers rated at 275 lbs**

**Electrical defrost heater**

terminates defrost sooner, reducing product instability

**Right or left compressor placement**

specify at time of order

**Field-reversible doors**

with 120 degree stay open feature

**Heavy-duty aluminum pan liner**

is easy to clean and prevents spills from falling into cabinet

**Accommodates up to 6" deep food service pans**

Not included

**Improved serviceability**

Removable service panel for easy access to refrigeration system

**Featuring environmentally friendly energy efficient R290 refrigerant**



**3 DRAWERS IN SINGLE SECTION**  
available on all sizes



**CLEAR LIDS AVAILABLE**  
for optimized product display

# WORKTOPS

## Refrigerators & Freezers



**Designed to perform in high ambient conditions**

**3 year parts and labor warranty with an additional 4 year compressor part warranty**

**Made in USA**

**Stainless steel top**

**Full electronic control**

**Self-closing doors**

with 120° stay-open feature, on cartridge style hinges

**Magnetic gasket**

attached to each door for positive seal

**Featuring environmentally friendly energy efficient R290 refrigerant**

**Two epoxy-coated steel wire shelves per section**

**Field-reversible doors**

On select models

**6" heavy duty casters**

various ADA compliant mounting options



**REMOVABLE BACKSPASH**

available as an option, as well as a Flat Top, or a Foamed-in-Place backsplash



**FIELD-REVERSIBLE DOORS**

for layout flexibility

# UNDERCOUNTERS

## Refrigerators & Freezers



**Designed to perform in high ambient conditions**

**3 year parts and labor warranty with an additional 4 year compressor part warranty**

**Made in USA**

**Undercounter units feature a 1/2" thick sub-top**

**Full electronic control**

**Interior thermometer**

**Self-closing doors**  
with 120° stay-open feature, on cartridge style hinges

**Easy door removal for service and cleaning**

**Magnetic gasket attached to each door**  
for positive seal

**6" heavy duty casters standard**  
3" casters or 6" leg option available at no charge when specified on order

**Two epoxy-coated steel wire shelves**  
per section

**Field-reversible doors**  
On select models



**3" CASTERS AVAILABLE**  
at no charge when specified at the time of order



**FIELD-REVERSIBLE DOORS**  
for layout flexibility



# CHEF BASES

## Refrigerators & Freezers



**Designed to perform in high ambient conditions**

**3 year parts and labor warranty with an additional 4 year compressor part warranty**

**LIFETIME WARRANTY on all drawers and slides (parts only)**

**12-gauge stainless steel drawer slides with Delrin® rollers rated at 275 lbs**

**Heavy-duty, fireproof, reinforced, insulated 16-gauge top with fully integrated heat-shield**  
(must adhere to manufacturer's clearance)

**Compressor available on left or right side**  
(specify at time of order)

**Consistent product temperature with intelligent airflow design**

**Improved drawer systems for easier installation, field adjustment, and increased pan capacity**

**Full refrigeration system serviceability from the front of the cabinet, eliminating the need to remove the lid**

**Accommodates 6-inch-deep full-size food service pans in top & bottom drawers**

**Featuring environmentally friendly energy-efficient R290 refrigerant**



**12-GAUGE DRAWER SLIDES** with 3 Delrin encased stainless steel roller bearings per each drawer slide



**ACCOMMODATES 6" PANS IN** top and bottom drawers



# BAR MOBILES



**Wide variety of options and accessories**

**3 year parts and labor warranty  
with an additional 4 year  
compressor part warranty**

**Made in USA**

**Stainless steel drip tray for easy cleaning**

**Heavy-duty stainless steel floor**

**Stainless steel top with black glass rails**

**4" casters**

**Mechanical control - BM23**

**Full electronic control - DZ24**

**Interior thermometer**

**Tower has continuous source of cold air**

**Portable unit with waste bottle**

for beer and wine from drain

**Self-closing doors with locks**

**Field-reversible door**

**Magnetic gasket attached to each door**

for positive seal



**PORTABLE WASTE BOTTLE**

for beer and wine from drain



**STAINLESS STEEL DRIP TRAY**

for easy cleaning

# DIRECT DRAWS



## 3-IN-1 DRAFT SOLUTIONS

Dispense beer, wine, or coffee (other non-alcoholic beverages) with the same tap—no line/manifold changes needed!

**Wide variety of options and accessories**

**3 year parts and labor warranty  
with an additional 4 year  
compressor part warranty**

**Made in USA**

**Stainless steel top with drip tray**

**Galvanized steel interior liner**  
with heavy duty stainless steel floor

**Full electronic control**  
(except DD24 which has mechanical control)

**Drain tube located at bottom front of cooler**  
connects to floor drain

**Self-closing doors with locks**

**Magnetic gasket attached to each door**  
for positive seal

**Field-reversible door**

**Compressor available on left or right side**  
specify at time of order



## LEFT OR RIGHT COMPRESSOR

Specify which side the compressor should be located at time of order



## DRAIN TUBE

bottom front of cooler (condensor side) and connects directly to floor drain

# BACK BAR COOLERS



**Wide variety of options and accessories**  
**3 year parts and labor warranty**  
**with an additional 4 year**  
**compressor part warranty**  
**Made in USA**

**Galvanized Steel Interior**

**Stainless Steel Floor**

**Full electronic control**

(except BB24 which has mechanical control)

**Compressor Available Left or Right Side**

specify at time of order  
right side only on pass-thru models

**LED Lighting**

**Two Epoxy Coated Shelves per section**

**Stay Open Door and Locks**

**Field-reversible Doors**

on select models

**Sliding Glass Doors**

on select models (door frames only come in black)

**Pass Thru Models Available**

**Magnetic gasket attached to each door**

for positive seal



**LEFT OR RIGHT COMPRESSOR**

Specify which side the compressor should be located at time of order; right side only on pass-thru's



**OPEN FOOD RATED MODELS**

for increased storage options



# BOTTLE COOLERS



**Heavy-duty sliding lids**

**3 year parts and labor warranty  
with an additional 4 year  
compressor part warranty**

**Made in USA**

**Galvanized steel interior and floor**

**Full electronic temperature control**

**100% Metal lids**

reinforced to prevent bowing

**Stainless steel top**

**Bottle opener and cap catcher standard**

**Adjustable wire dividers**



**ADJUSTABLE DIVIDERS**

to organize cooler to meet your specific needs



**100% METAL LIDS**

reinforced to prevent bowing



# GLASS & PLATE CHILLERS



**Heavy-duty sliding lids**

**3 year parts and labor warranty  
with an additional 4 year  
compressor part warranty**

**Made in USA**

**Front or top loading**

**Interior thermometer**

**Self-closing door with 120° stay-open feature**  
(Front Loading Models)

**Field-reversible door**  
(Front Loading Models)

**Easy door removal**  
for service and cleaning (Top Loading)

**Magnetic gasket attached to each door**  
for positive seal

**Auto-defrost**

**Built-in Condensate Evaporator System**

**Operating Temperature -10F**

**Two Epoxy Coated Shelves**

**R290 Refrigerant**



**ADJUSTABLE DIVIDERS**

to organize cooler to meet your specific needs



**100% METAL LIDS**

reinforced to prevent bowing (GF models)

# MILK COOLERS



**One-piece bottom for maximum support**

**3 year parts and labor warranty with an additional 4 year compressor part warranty**

**Made in USA**

**CFC & HCFC-free insulation is foamed-in-place**  
for increased structural strength & energy efficiency

**Epoxy coated, steel wire racks included**  
for added floor protection

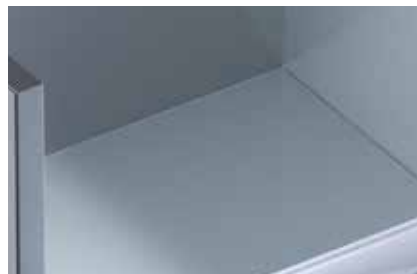
**Flexible compression door gaskets**  
ensure a tight seal for added temperature control

**Cylinder Locks**

**Bottom drain for connection to drain hose and easy cleaning**

**External digital thermometer**

**Coolers hold milk between 36°-38°F**  
until ready to serve for maximum refreshment



**ONE-PIECE REINFORCED FLOOR**  
for maximum milk crate support and made with stainless steel



**SINGLE AND DUAL ACCESS**  
models available

# BLAST CHILLERS/SHOCK FREEZERS

Self Contained



**Compact construction**

**Electronic control board display**

**Custom chill/freeze cycles**

**Core temperature probe**

**Manual defrost**

**Insulation is CFC and HCFC free,  
high density polyurethane**

**R404A refrigeration**

**Self-contained refrigeration**

**3 Year parts and labor / Additional 2 year  
compressor part warranty**

**Automatic product storing at end of cycle**

**Up to 99 custom programmable cycles**

**USB Port for HACCP report download**



**CORE PROBE**

measures product temperature



**ELECTRONIC CONTROL DISPLAY**

intuitive programmable display

# REMOTE BLAST CHILLERS/SHOCK FREEZERS

## Roll-in and Roll-thru Cabinets



*Shown with optional ramp*

**Snap in place magnetic gaskets self closing door with hold open stop at 100°**

**On board recipe book with 99 free memory positions for custom programs**

**3 Year parts and labor / additional 2 year compressor part warranty**

**Stainless steel exterior and interior**

**Die-formed interior floor has rounded corners**

**Central drain for easy cleaning**  
(select models)

**Anti-condensation perimeter heating around door opening**

**Ergonomic door handle and stainless steel**

**Soft and hard, timed or core probe blast chilling**

**Multi point sensor temperature display button**

**HACCP alarm display button**

**Pre-cooling cycle button**

**Adjustable evaporator fan speed button**

**Manually initiated defrost, automatic termination**

**USB data recorder**

**Infinity mode program with adjustable set point (chilling only)**

**Automatic conservation mode at end of cycle**

**Contact factory for compatibility of refrigerants**



**CORE PROBE**  
measures product temperature



**ELECTRONIC CONTROL DISPLAY**  
intuitive programmable display

# BLAST CHILLER/FREEZER/THAWER

## Self-Contained



*Shown with optional ramp*

**5" High Definition, Easy-To-Use Touch Display**  
**Blast Chilling, Shock Freezing, Thawing Mode**  
**Self-Contained R404A Refrigeration System**

### **Stainless Steel Exterior And Interior**

Rounded interior corners for proper cleaning

### **High Density, Polyurethane Insulation**

### **Hinged Door With Gasket**

with Closing Ramp System and Ergonomic Vertical Door Handle

### **Anti-Condensation Resistance**

Placed On The Door Under The Gasket

### **Stainless Steel Door Liner**

### **Thick Stainless Steel Internal Bumper**

to Avoid Damage Caused By The Cart

### **Die-Formed Leak-Proof Floor**

### **Heated Core Probe**

with 4 Measuring Points

### **Customized Blast Chilling, Blast Freezing and Thawing Cycles**

320 cycles can be memorized

### **USB Connection**

for Uploading And Downloading Data And Recipes



### **EXPANDABILITY AND CONTROL**

easily add, edit or rename recipes, all organized by product type and function



### **TOUCH CONTROL PHOTO MENU**

is easy to use, and the function selection is immediate and intuitive



# THE BEVERAGE-AIR DIFFERENCE

**WE STRIVE TO SET OURSELVES APART FROM THE COMPETITION BY DELIVERING UNMATCHED VALUE AND SERVICE TO OUR CUSTOMERS**

## **Designed to Perform in High Ambient Locations**

When kitchens heat up, Beverage-Air refrigerators and freezers are there to keep things cool

## **R290 Refrigerant**

Increased energy efficiency and better for the environment

## **Largest Breadth of Product Offering**

If there's a need for a commercial refrigerator, Beverage-Air has the right unit

## **Huge Assortment of Standard Units**

Our range of standard units includes many unique items

## **Custom Models**

If we don't have a standard solution that fits, we can build custom units to spec

## **Celebrating Over 70 Years of American-Made Innovation**

We've been at this a long time, and our legacy shows in the quality of our machines

## **Unmatched, Award Winning Customer Service & Support**

Our team has been recognized by every major buying group for our excellent service

## **Dedicated Service Center**

We're here when you need us

## **ANY Certified Refrigeration Contractor Can Work On Beverage-Air Under Warranty**

Helps ensure consistent field service

## **Equipment & Accessories Receive Your Same Discount**

We make sure you're getting the best value for everything you purchase

## **Online Warranty Registration & Processing**

With 24-Hour Acknowledgement

# CONTACT US

| Contact       | Office       | Cell         | Email Address         | Responsibility                 |
|---------------|--------------|--------------|-----------------------|--------------------------------|
| Ryan Ricker   |              | 630-564-7926 | rricker@alirefna.com  | Vice President of Sales        |
| Madi Nommsen  |              | 336-793-6282 | mnommsen@alirefna.com | Regional Sales Manager         |
| Logan Noll    |              | 724-312-2871 | lnoll@alirefna.com    | Regional Sales Manager         |
| Daniel Short  |              | 434-390-6428 | dshort@alirefna.com   | Regional Sales Manager         |
| Mitch Carb    | 336-245-6464 | 989-493-2778 | mcarb@alirefna.com    | Director of Marketing          |
| Joann LaPort  | 336-245-6404 | 336-831-4591 | jlaport@alirefna.com  | Sales Coordinator              |
| Ann Radick    | 336-245-6443 | 864-237-0456 | aradick@alirefna.com  | Director of Customer Relations |
| Alex Vogler   | 336-245-6449 |              | avogler@alirefna.com  | Technical Support Manager      |
| Glenda Howard | 336-245-6421 |              | ghoward@alirefna.com  | Warranty/Dispatch Supervisor   |

## Customer Service Teams

Keri McCarroll: kmccarroll@alirefna.com

Debra Goins: dgoins@alirefna.com

Abbie Dennis: adennis@alirefna.com

## Technical Service Team

Luke Hopper - lhopper@alirefna.com

Cedric Leverett - cleverett@alirefna.com

Kevin Arrieta - karrieta@alirefna.com

Jeffrey Kachmar - jkachmar@alirefna.com

Jake Wallace - jwallace@alirefna.com

Jared Kallam - jkallam@alirefna.com

Travis Shreve - tshreve@alirefna.com

## Warranty Dispatch - (877) 866-1223

Trae Bailey - tbailey@alirefna.com

## Factory Headquarters Sales Office

3779 Champion Blvd

Winston-Salem, NC 27105

Phone: (336) 245-6400

Fax: (336) 245-6453

Email: sales@bevair.com

Web: www.beverage-air.com

## Factory Customer Service

Phone: (888) 845-9800

Fax: (800) 253-5168

## Factory Technical Service

Phone: (800) 684-1199

Fax: (800) 262-9381

## Warranty Dispatch:

(877) 866-1223

## Manufacturing Facility

1028 Route 28

Brookville, PA 15825