

Operations Manual

Apex Pro X2 - Hydraulic Automatic Dough Press
Model #: DP2350S



PROLUXE
WWW.PROLUXE.COM

Version: 052120

Congratulations on your selection of the Apex Pro X2 Automatic Dough Press. Proluxe is a leading manufacturer of food preparation and cooking equipment designed for the most demanding commercial kitchens. Proluxe equipment is a result of the highest quality engineering and time-tested design.

This manual includes installation, operation, and maintenance procedures for your new Apex Pro X2 Dough Press. Please read this manual carefully and keep it with your machine for proper operation and lasting service.

INSTALLATION

Domestic

Use a separate 30 amp AC circuit. Only industrial extension cords with proper wire size should be used; size 16/3 wire for distance up to 25 feet, and size 14/3 for distance up to 50 feet.

International

Use a designated 16 amp AC circuit. Only industrial extension cords with proper wire size (2.5 sq. mm) shall be used. Make sure there is a proper electrical wall outlet located

within reach of the cord and plug attached to the press.

Make sure there is a proper electrical wall outlet located within reach of the cord and plug attached to the press. Then place the press in an area which allows for “swing clearance” of the lower platen plus vertical and horizontal clearance of the press itself.

Limited Machine Warranty

Proluxe warrants this dough press machine, when operated under normal conditions, to be free from manufacturing defects in material and workmanship for a period of one year on parts and labor from the invoice date.

This warranty will be effective only when Proluxe authorizes the original purchaser to return the product to the factory in Perris, California freight prepaid and only when the product, upon examination, has proven to be defective. This warranty does not apply to any machine that has been subjected to misuse, negligence or accident. Proluxe shall not be liable for the injury, loss or damage, direct or consequential, arising out of the use or the inability to use the product. No claim of any kind shall be greater in amount than the sale price of the product or part to which claim is made.

This is the sole warranty given by the company, it is in lieu of any other warranties, expressed or implied, in law or in fact, including the warranties of merchantability and fitness for a particular use, and is accepted such by the purchaser in taking delivery of this product.

SPECIFICATIONS

Electrical:

208V/50-60Hz/4600W/22.11 Amps
Requires 30 AMP outlet

Includes: 72" cord and 6-30P NEMA
approved plug.

Shipping Weight:
200lbs. (82kg.)

Poids d'expédition:
200lbs. (82kg.)

INTERNATIONAL SYMBOLS

Symboles internationaux



Power Off
éteindre



Power On
allumer



Hot Surface
surface chaude



Risk of Electrical Shock
Risque de choc électrique



Protective Earth Terminal
Borne de terre de protection



Caution - Warning
chaud - avertissement

SAFETY SUMMARY



Warning

To reduce the risk of electrical shock, do not remove or open cover. No user-serviceable parts inside. Refer servicing to qualified personnel.

Avertissement

Pour réduire le risque de choc électrique, ne pas retirer ou couvercle ouvert Aucune pièce réparable par l'utilisateur, reportez-vous à du personnel qualifié.



Warning

In case of power cord damage, do not attempt to repair or replace the power cord. Please contact the manufacturer or the local distributor.

Avertissement

Pour une protection continue contre l'incendie et de choc électrique, remplacer avec le même type et calibre du fusible. Mis fusible supplémentaire nominale max 3A, 120 Vac.



Warning

For continued protection against fire and electric shock, replace with the same type and rating fuse. Listed Supplemental Fuse rated max 3A, 120Vac.

Avertissement

Pour une protection continue contre l'incendie et de choc électrique, remplacer avec le même type et calibre du fusible. Mis fusible supplémentaire nominale max 3A, 120 Vac.



Caution Hot

Avoid touching hot surfaces while operating the machine.

Attention à chaud

Évitez de toucher les surfaces chaudes lorsque vous utilisez la machine.



Caution

When servicing or cleaning the machine, make sure that the power cord is removed from the wall socket.

During normal operation, the base of the machine must be installed or placed above the wall socket.

Avertissement

Lors de l'entretien ou du nettoyage de la machine, assurez-vous que le cordon d'alimentation est débranché de la prise murale.

1. Temperature – May be set from 100°F-425°F (38°-163°C) Factory default is 200°F.

2. Time – Time may be set from 1 second to 10 minutes.

3. Counter – Cycle counter counts the number of applications from 1 to 9999 (see additional Notes – Counter).

4. 2 Lower (Fig. A) Refers to models using upper and lower heated surfaces.

Controller Operation

1. Viewing the Modes of Operation:

To view the set points of temperature, timer and counter, press MODE button to view the desired mode of operation.

2. Changing Temperature:

Press MODE button until temperature is displayed.

Press and hold SET button while pressing the UP (↑) and DOWN (↓) arrow buttons to desired temperature setting.

Fahrenheit/Celsius Conversion:

The temperature controller can be programmed to display either °F or °C. Press the MODE button until the temperature is displayed. Then push and hold the SET button for 10 seconds.

3. Changing Time:

Press MODE button until time is displayed. Press and hold SET button while pressing the UP (↑) and DOWN (↓) arrow buttons to desired timer setting.

OPERATION TEMPERATURE & TIMER CONTROL

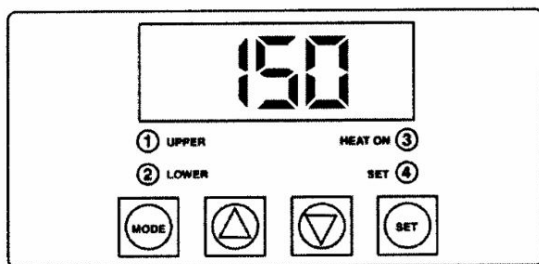


FIG. A

Solid State Controller

This controller has three control features:

2. Set the timer in accordance with the following information:

- **2-4 seconds** – For warm dough with moderate yeast content.
- **2-6 seconds** – For room temperature dough with moderate yeast content.
- **6-8 seconds** – For cold dough right out of the refrigerator with low yeast content.

4. Resetting the Counter:

Press MODE button until the counter is displayed.

To reset the counter (# of cycles), simultaneously push UP (↑) or DOWN (↓) arrow buttons (approx. 5 seconds).

DOUGH PRESSING OPERATIONS

Pressing Dough:

For best results, your dough should be proofed before pressing, but it will also press directly out of your refrigerator. Flour is not required to press a crust and **should NOT** be dusted on any part of the machine.

1. Check to see if you have the correct type of electrical current or serious damage could occur.

2. Press the power button, the green light above will illuminate when powered on.

3. Set your desired temperature on the control panel by using FIG. A and the instructions above. We recommend a temperature of 150°F. Testing with your own dough may desire a different setting.

Note: Heat is provided in the upper and lower platens enable the dough to flow more rapidly in the pressing cycle. The heat IS NOT intended for baking.

4. Swing open the upper platen and apply a quick spray of a good water based food release on the platen.

5. Place your pre-portioned ball of dough in the approximate center of the lower platen. Add another spray to the top of the dough ball.

6. Close the platen and, with both hands, press the two green buttons on each side of the machine simultaneously.

7. Hold the buttons in until it beeps then release both buttons. The timer will actuate and, when the time cycle is completed, the platens will release automatically. (Timer is factory preset for six (6) seconds.

Instructions to change the timer is found above under Controller Operations.)

9. Remove the finished product by rotating the upper platen until you have proper space to remove your dough.

10. Remove the crust, place on a pan or peel, add toppings and bake.

RECOMMENDED SEASONING & CLEANING PROCEDURES

Before use you must properly season your platens to prevent your dough from sticking.

Tools Required:

- Food release
- Soapy water solution
- Washcloth
- Paper towels

DO NOT use steel wool or harsh abrasives, it will you will cause costly damage.

1. Before cleaning make sure the unit is turned off.
2. Spray lower platen with approved food release/oil spray.
3. Wipe oil across lower platen with paper towel.
4. Wipe oil across upper platen.
5. Mix a warm dish soap and water solution.
6. Soak washcloth and wring to remove excess water.
7. Wipe lower and upper platen with damp cloth.

PREVENTATIVE MAINTENANCE

Proluxe machines are relatively maintenance free. For a long lifespan, the following preventative maintenance should be followed:

Daily Care:

1. Platens: Turn your machine off and allow to cool down before attempting to clean. These platens should only be cleaned with mild soap and warm water then wiped off with a clean, soft cloth or soft sponge.

2. Exterior surfaces: Wipe daily with mild soap and warm water.

DO NOT use ice or cold water to cool the unit down. This can cause platen to warp.

Piston Maintenance:

In order to ensure pop and trouble free operation of the press piston, it is important that the machine be lubricated once every three months, under normal operation. High volume users may require more frequent lubrication.

Please follow these instructions:

1. Locate the grease port on the machine. Machines will pull down arms has a single grease port located below the upper head on the right side of the vertical post.
2. Place grease gun head against grease port and apply enough pressure to allow gun head to engage the grease port.
3. Squeeze handle of grease gun. This will force the grease into the piston.

The lubricant use must be USDA-H-I authorized for food machinery. This lubricant can be ordered through Proluxe, part # 110-002.

Service Problems:

Contact our factory at (800) 624-6717 (U.S. only) or approved service agency. When contacting the factory for information, parts or service instructions, please provide the

serial number of the machine be provided. This number can be found on the serial plate located on the rear of the machine.

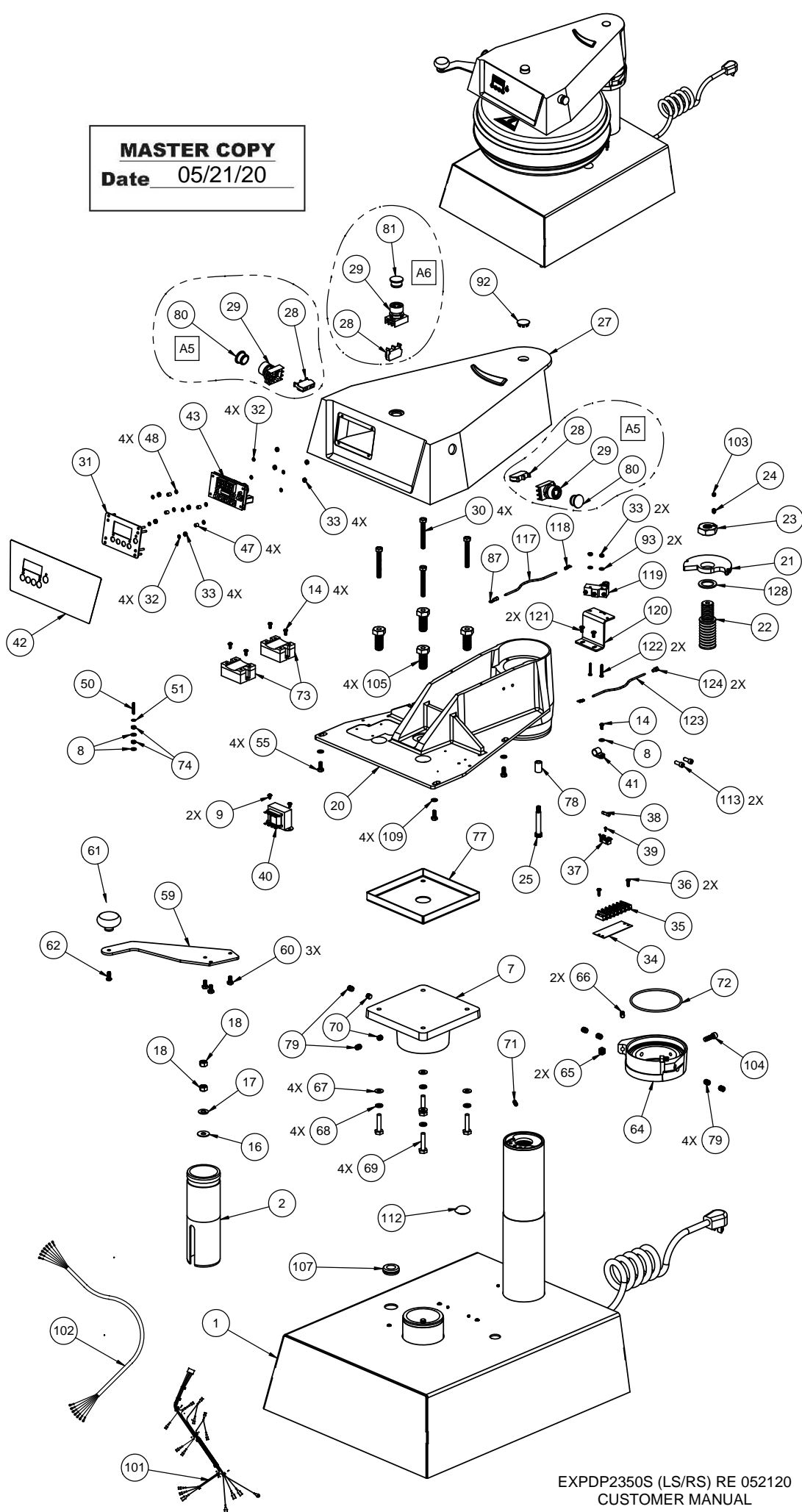
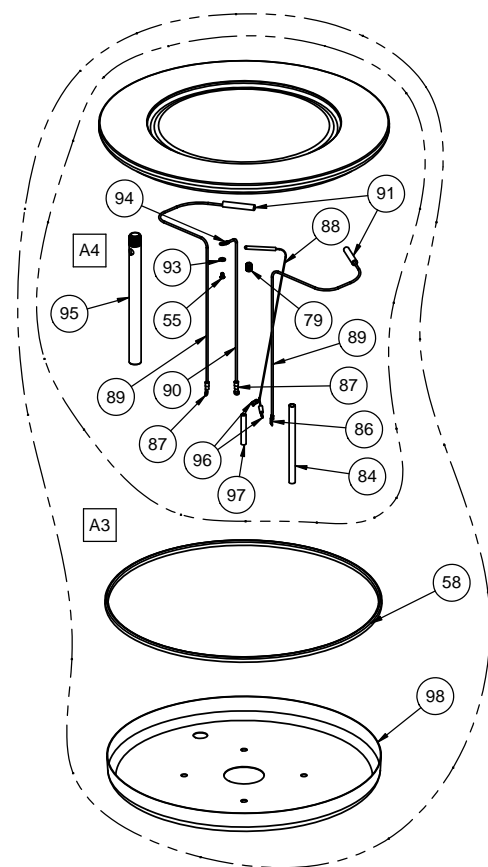
Apex Pro X2 Troubleshoot Guide - Model #: DP2350

Problem	Cause	Action	Ref #
Power button on digital controller face is depressed but doesn't turn on.	1. Power cord is not plugged in.	1. Plug the power cord into wall receptacle and power button.	60
	2. Circuit breaker is tripped off in the site's breaker box.	2. Reset circuit breaker that the grill is plugged into. Depress Power Button to turn on.	----
	3. Transformer has taken an electrical surge and is damaged.	3. Replace Transformer after you check secondary side of transformer. If working properly, you should receive 12vdc.	66
	4. Check voltage on the secondary side of the Transformer. If you read 12VDC then you are receiving voltage to the controller.	4. Replace controller. Controller should be on once the power button is depressed.	76
	5. Possible blown fuse.	5. Replace fuse.	39
Digital controller's LED's are scrambled or randomly erratic. If when turning on, the display will first go to segment check	1. Possibly a component on the Digital controller is damaged.	1. Replace digital controller.	76
	2. Control needs to reset.	2. While unit is on unplug unit, wait for 1 min. Then plug machine on again and depress the power button.	----
Digital controller on startup goes through LED segment check (8888) then to version # and then loops back to the above reboot.	The relay driver on the digital control may be blown.	Replace digital controller.	76
Digital display shows	Sensor lost it's continuity as shown	Disconnect prob that is open (no	A1.10

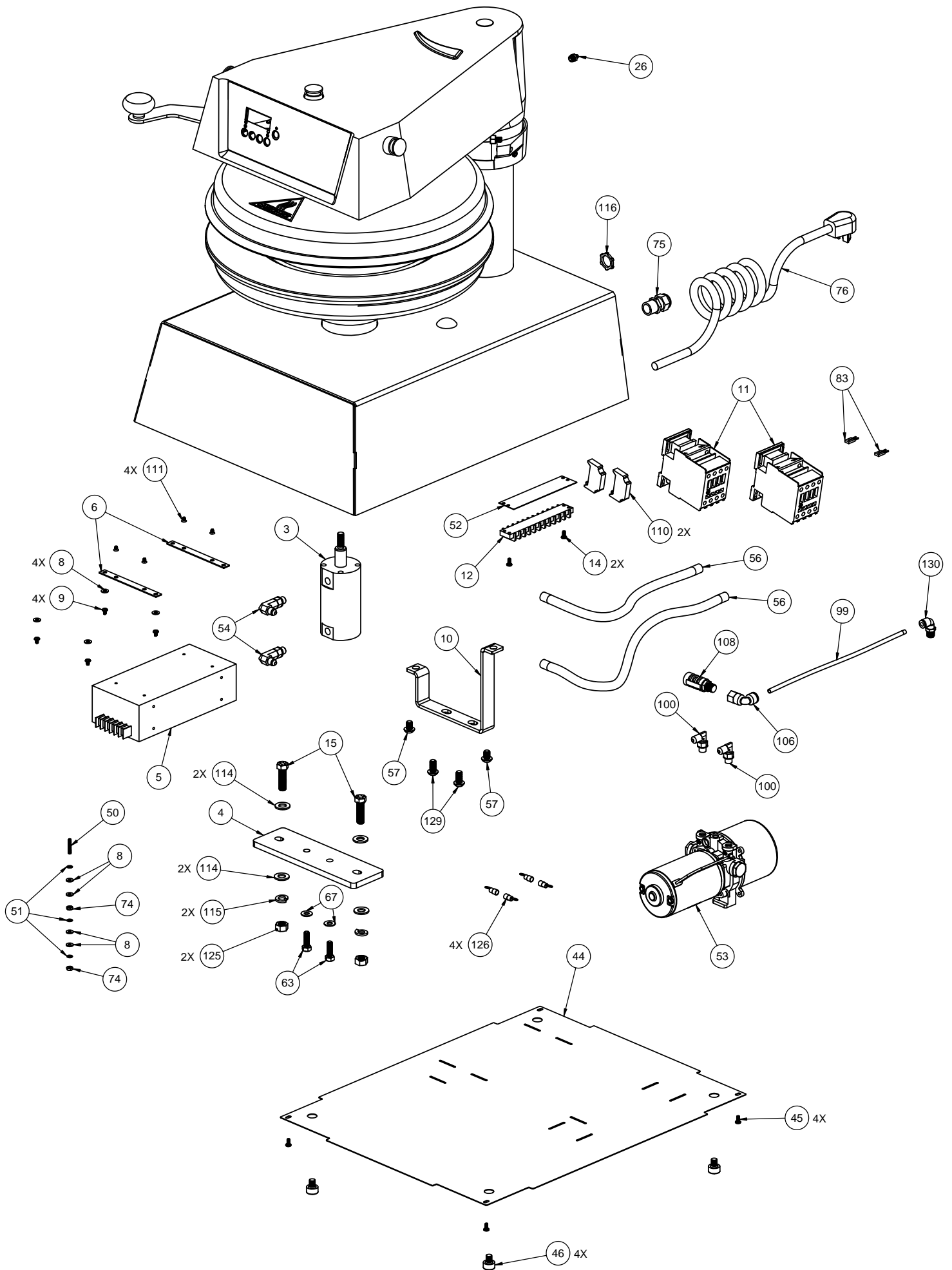
PROB. No heat on Upper Platen.	on a multi-meter.	continuity as shown on a multi-meter. Must replace sensor (RTD). Do not cut and splice new sensor. Install new 2000 ohm RTD sensor to under side of heat platen and reconnect to the controller.	
When depressing the tactile button on digital controller, nothing happens.	The tactile buttons under the overlay may be not close enough to activate. Same goes if the buttons are already pressed by overlay without depressing button.	Carefully (no too much at one time to avoid fracturing the traces on the controller) tighten the nuts on the back of the controller until button activate. Same goes in reverse if buttons are held down by the overlay.	
Digital display shows relay and particular zone is overheating.	1. The relay on the switched side is not opening to regulate temperature.	1. Replace the relay.	55
Beeper not functioning or intermittent beeper sound.	1. Beeper on digital control board failed.	1. Replace digital controller board	76
Press does not close when pressing the two, green, start buttons	Did not simultaneously press the start buttons exactly at the same time.	Try pressing both buttons exactly at the same time. This is a anti-tiedown safety feature.	82
If setpoint is reached but slightly off in temperature.	Offset may need to be calibrated and adjusted.	Call (800) 624-6717 ext. 129 for instructions.	----
Heater platens overheating	If the relay (depending on the year of the model) on the coil side are receiving 12vdc indicates the controller is functioning properly. On the switching side of the relay, is there 120 vac going to the heater in question. If there is no voltage on the to the switching side of the relay to the heaters, the relay is not working properly.	Replace relay If the controller's heat-on LED is not lit indicating the controller is working properly.	55

EXPLOSION VIEW DP2350S (LS/RS)

Date 05/21/20



EXPDP2350S (LS/RS) RE 052120
CUSTOMER MANUAL



**PROLUXE PARTS LIST FOR
DP2350S (LS/RS)**

ITEM #	DESCRIPTION	DP2350SE	DP2350SCEC	QTY.
		208 ~ AC	220 ~ AC	
1	BASE AND POST WELDING ASSEMBLY WITHOUT KEYWAY, DP1350/DP2350	DP1315501	DP1315501	1
2	PISTON GUIDE WELDING ASSEMBLY WITHOUT KEYWAY, DP2350/DP2350M	DP20807	DP20807	1
3	CYLINDER, HYDRAULIC - 40 MM BORE x 1.687 STROKE	DP13140	DP13140	1
4	MOUNTING PLATE	DP13105	DP13105	1
5	POWER SUPPLY, 24VDC / 85-265VAC	DP13110	DP13110	1
6	ELECTRICAL BOX MOUNTING BRACKET	DP13107	DP13107	2
7	PISTON RAM MACHINED DP2300	11023003001	11023003001	1
8	WASHER, SAE #8	WSAE8	WSAE8	11
9	SCREW, PHILLIPS PAN HEAD 8-32 X 1/4	SP83214	SP83214	6
10	PUMP MOUNTING BRACKET	DP13108	DP13108	1
11	CONTACTOR, 12V GE	DP13117	DP13117	2
12	TERMINAL BLOCK #11	60111	60111	1
13	MANUAL DP2350S	MDP2350S	MDP2350S	1
14	SCREW, PHILLIPS PAN HEAD 8-32 X 3/8	SP83238	SP83238	7
15	BOLT, HEX 7/16-20 X 1-1/2"	BH71620112	BH71620112	2
16	WASHER, SAE 3/8	WSAE38	WSAE38	1
17	WASHER, LOCK 3/8	WL38	WL38	1
18	NUT, HEX 3/8-16	NH3816	NH3816	2
20	ARM MACHINED, DP2350	DP2082101	DP2082101	1
21	THRUST PLATE	DP15404	DP15404	1
22	ADJUSTABLE SCREW	110230042	110230042	1
23	NUT, LOCKING JAM (MACHINED)	11070	11070	1
24	SCREW, SET 1/4-20 X 3/8 CONE POINT	SST142038CP	SST142038CP	1
25	BOLT, SHOULDER 3/8X2	11023003	11023003	1
26	FITTING, ZERK 1/8" PIPE	B610	B610	1
27	HOUSING, MACHINING	11010252201	11010252201	1
28	CONTACT N/O SCREW TYPE, GE #P9B10VN	110101751	110101751	3
29	SWITCH, MOM P/S OP SCREW ON GE	P9XPLOSO	P9XPLOSO	3
30	BOLT, HEX 5/16-18 X 2 1/2 G5	BH51618212G5	BH51618212G5	4
31	FACIA CONTROL PLATE	11086027	11086027	1
32	WASHER, INTERNAL TOOTH LOCK #6	WLIT6	WLIT6	8
33	NUT, HEX 6-32	NH632	NH632	10
34	MARKER STRIP #6	MS6016	MS6016	1
35	TERMINAL BLOCK #6	6016	6016	1
36	SCREW, PAN HD 8-32 X 5/8"	SP83258	SP83258	2
37	FUSE HOLDER 1 AMP	MPPF708	MPPF708	1
38	FUSE BUSS 1 AMP	MPPF701R	MPPF701R	1
39	SCREW, PHILLIPS PAN 2-56x1/4	SP25614	SP25614	1
40	TRANSFORMER	11096975	MPPT700R	1
41	CLAMP, CABLE 3/4" #3332	CC34	CC34	1
42	OVERLAY-BLUE, DP1300/DP1350, DP2350/DP2300	ODP2350B	ODP2350B	1
43	DIGITAL CONTROL REV. 5.06	DP139052	DP139052	1
44	BOTTOM COVER	DP13154	DP13154	1
45	PAN HEAD SLOTTED 8-32 X 3/8" PLATED	SPS83238	SPS83238	4
46	FEET, RUBBER	RF209	RF209	4
47	NYLON SPACER, 1/4 X .141 X 9/32 LONG	110969111	110969111	4
48	WASHER, .311 OD X .150 ID X .20 THK	311150019	311150019	4
50	SCREW, SET 8-32 X 1	SST8321	SST8321	2
51	WASHER, INTERNAL TOOTH LOCK #8	WLIT8	WLIT8	4
52	MARKER STRIP #11	MS60111	MS60111	1
53	HYDRAULIC PUMP/MOTOR WITH OIL CANISTER (DP1350,DP2350)	DP13149	DP13149	1
54	90 DEGREE ELBOW X-LONG FORGE	DP13158	DP13158	2

**PROLUXE PARTS LIST FOR
DP2350S (LS/RS)**

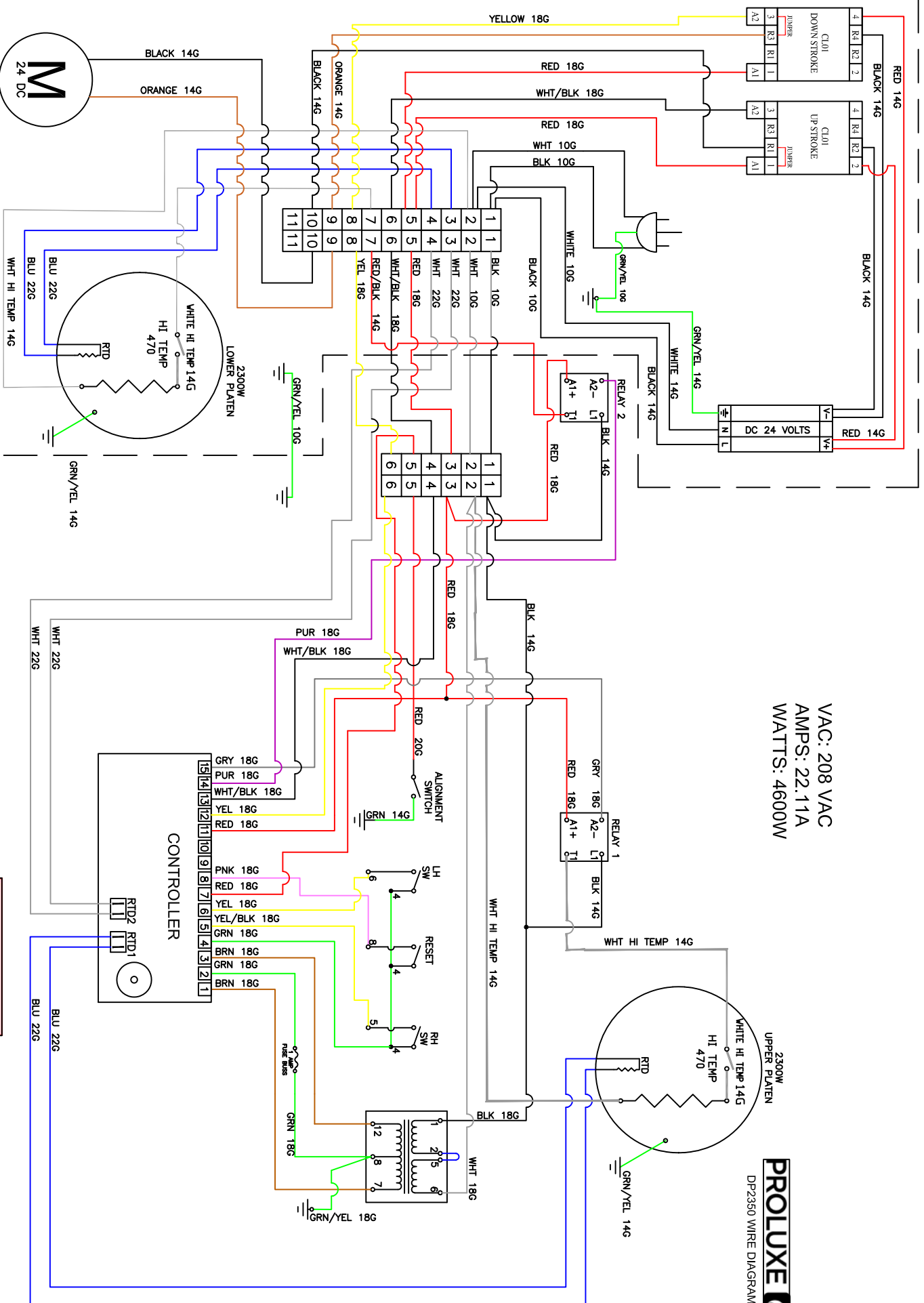
ITEM #	DESCRIPTION	DP2350SE	DP2350SCEC	QTY.
		208 ~ AC	220 ~ AC	
55	BOLT, HEX 1/4-20 X 5/8" ZINC PLATED	BH142058	BH142058	4
56	HYDRAULIC MOTOR HOSES	DP13141	DP13141	2
57	SCREW BUTTON HEAD 3/8-16 X 1/2	SB381612	SB381612	2
58	HIGH TEMP. EDGE TRIM	DP20804	DP20804	1
59	HANDLE, SWING AWAY	11023004501	11023004501	1
60	HEX BOLTS STAINLESS STEEL, 1/4-20 X 1/2	BH142012S	BH142012S	3
61	KNOB, SWING AWAY (MUSHROOM)	110017	110017	2
62	SCREW, BUTTON HD 1/4-20 X 5/8"	SB142058	SB142058	1
63	BOLT, HEX 5/16-18 X 1	BH516181	BH516181	2
64	COLLAR POST DP2300	1101751162301	1101751162301	1
65	NUT, HEX JAM 5/16-18	NHJ51618	NHJ51618	2
66	COLLAR, STOP PIN	DP12504	DP12504	2
67	WASHER, SAE 5/16	WSAE516	WSAE516	6
68	WASHER, 5/16" SPLIT LOCK	WL516	WL516	4
69	BOLT, HEX 5/16-18 X 1-1/2", GRADE 5	BH51618112G5	BH51618112G5	4
70	SCREW, SET CONE POINT 3/8-16 X 1/2	SST381612CP	SST381612CP	2
71	SCREW, SET 1/4-20 X 1/2	SST142012	SST142012	1
72	ORING, #2-243 N-70	MPSS062	MPSS062	1
73	RELAY, SOLID STATE	MPR90217	MPR90217	2
74	NUT, HEX 8-32	NH832	NH832	4
75	HEYCO STRAIN RELIEF 1/2"	3231	3231	1
76	POWER CORD	110573175	TP121176	1
77	COVER, LEVELING SPRING	11023002	11023002	1
78	BUSHING, ALIGNMENT	110415602	110415602	1
79	SCREW, SET 3/8-16 X 1/2	SST381612	SST381612	8
80	GREEN MUSHROOM BUTTON SCREW ON	P9ARB3V	P9ARB3V	2
81	BUTTON BLACK MUSHROOM SCREW ON GE	P9ARB3N	P9ARB3N	1
82	UPPER HEAT SHROUD	110230036	110230036	1
83	BRIDGE, PLUG IN, 2, RED, CROSS CONNECTIONS	110116920	110116920	2
84	SLEEVING, PVC WIRE	OPVC1050	OPVC1050	1.91 FT
85	TERMINAL, QD 3/16 x 18-22 GA (PINK)	2280	2280	2
86	14- 16 GA #10 FORK TERMINAL ISUL.	1626	1626	2
87	TERMINAL, RING #8 14-16 GA (BLUE)	1604	1604	5
88	RTD SENSOR ASSEMBLY	110949110	110949110	2
89	WIRE, TGGT, 14 GA	110069	110069	13.25 FT
90	WIRE, TFE 14 GA GREEN	WTFE14G	WTFE14G	5.45 FT
91	TFE, SHRINK TUBING 7 AWG	110131	110131	.66 FT
92	PLUG, BUTTON 7/8, PLASTIC (BLACK)	PB78P	PB78P	1
93	WASHER, SAE #6	WSAE6	WSAE6	4
94	TERMINAL, RING #6 14-16 GA (HI-TEMP)	1601HT	1601HT	2
95	POST GUIDE DP2300	11023004	11023004	1
96	TERMINAL, RING #6 x 18-22 GA, RED MOLEX	2202	2202	2
97	TFE NON SHRINK TUBING	110133	110133	.50 FT
98	SHROUD, LOWER PLATEN DP2300	110230037	110230037	1
99	TUBING, BLACK AIR LINE 1/4"	TPE4014	TPE4014	1 FT
100	HYDRAULIC PORT FITTINGS (CYLINDER/PUMP)	DP13121	DP13121	4
101	WIRE HARNESS (DP2350)	DP13950	DP13950	1
102	POWER DISTRIBUTION CABLE (DP2350)	DP13968	DP13968	1
103	SCREW, SET 1/4-20 X 1/4	SST142014	SST142014	1
104	SCREW, SOCKET HEAD 5/16-18 X 1 DOMESTIC	SSH516181D	SSH516181D	1
105	BOLT, LEVEL	11067	11067	4
106	FITTING, AIR 1/4" FEM.PIPE X, 1/4 TUBE 90 DEGREE	AQ70P4X4	AQ70P4X4	1

**PROLUXE PARTS LIST FOR
DP2350S (LS/RS)**

ITEM #	DESCRIPTION	DP2350SE	DP2350SCEC	QTY.
		208 ~ AC	220 ~ AC	
107	GROMMET, RUBBER CS157, 3/4" ID 1.3/8" OD,1/8"	110103919	110103919	1
108	MUFFLER SILENCER QUIET FLOW 1/4" NPT SQF-2	110559029	110559029	1
109	WASHER, SAE 1/4	WSAE14	WSAE14	4
110	RAIL LOCK	DP13122	DP13122	2
111	8-32 X 1/4" PHIL. HD 100 DEG., SCREW STAINLESS STEEL	SF83214S	SF83214S	4
112	PROXIMITY SWITCH HOLE PLUG, (.875" , KOS LT 1/2 LD)	DP13144	DP13144	1
113	SCREW, SOCKET HEAD 1/4-20X3/4"	SSH142034	SSH142034	2
114	WASHER, SAE 7/16	WSAE716	WSAE716	4
115	WASHER, LOCK 7/16	WL716	WL716	2
116	NUT, CONDUIT 1/2	NC12	NC12	1
117	WIRE, TFE 14 GA. GREEN	WTFE14G	WTFE14G	.91 FT
118	14-16 GA #6 FORK TERMINAL INSUL	1622	1622	1
119	SWITCH, MICRO ROLLER PLUNGER	BZ2RQ18A2	BZ2RQ18A2	1
120	ROLLER MICROSWITCH MOUNTING BRACKET	DP13905	DP13905	1
121	SCREW, PAN HD 10-32 X 3/8	SP103238	SP103238	2
122	SCREW PAN HEAD PHILLIP 6-32 X 1	SP6321	SP6321	2
123	WIRE, 20 GA. 10 STRAND, RED	WR2010	WR2010	.58 FT
124	TERMINAL, FORK #6 18-22GA	TF81822	TF81822	2
125	NUT, SELF LOCKING 7/16-20	NHSL71620	NHSL71620	2
126	TERMINAL RING 12-10 GA #6	1402	1402	4
127	SCREW, PAN HEAD PHILLIPS, 6-32 X 1/4", NICKEL PLATED	SP63214	SP63214	2
128	WASHER, THRUST	11059	11059	1
129	SCREW BUTTON HEAD 3/8-16 X 3/4	SB381634	SB381634	2
130	FITTING, AIR 1/4" PIPE X 1/4" TUBE, 90 DEGREE	AQ69P4X4	AQ69P4X4	1
A1	KITTED, UPPER PLATEN COMPLETE ASSEMBLY	11017815474208AK	11017815474220AK	1
A2	KITTED, UPPER PLATEN WITH WIRING ONLY	11017815474208K	11017815474220K	1
A3	KITTED, LOWER PLATEN COMPLETE ASSEMBLY	11017815432208AK	11017815432220AK	1
A4	KITTED, LOWER PLATEN WITH WIRING ONLY	11017815432208K	11017815432220K	1
A5	START SWITCH ASSY MUSHROOM	11051845	11051845	2
A6	STOP SWITCH ASSY MUSHROOM	11051850	11051850	1

VAC: 208 VAC
AMPS: 22.11A
WATTS: 4600W

PROLUXE
DP2350 WIRE DIAGRAM



MASTER COPY
Date 02/11/20

WDDP2350 RF 021120

ARM

BASE

Warranty & Return Policy

Proluxe warrants all products manufactured by it against defects in workmanship or materials from the date of purchase for a period of 1 year on parts and labor. This warranty applies to only equipment purchased and used in the United States.

Warranty period shall begin when equipment ships. Warranty travel will only be covered for 60 miles.

ALL WARRANTY SERVICE CALLS MUST BE APPROVED BY PROLUXE. IF THIS PROCEDURE IS NOT FOLLOWED, WARRANTY SERVICE WILL NOT BE COVERED. WARRANTY SERVICE WILL BE PAID ON STRAIGHT TIME, OVERTIME WILL NOT BE COVERED.

EXCLUSIONS

The warranties provided by Proluxe DO NOT apply to the following:

- Damage due to misuse, abuse, alteration, or accident.
- Improper or unauthorized repairs.
- Submerged in water.
- Damage in shipment.
- Equipment exported to foreign countries.

Special Order Equipment and Accessories

Cannot be canceled and are not returnable unless defective within the terms of this warranty.

In no event shall Proluxe be liable for consequential damages arising out of the failure of any of its products if operated improperly or caused by normal wear or damaged by operator abuse.

Limited Lifetime Warranty on Heating Elements

If replacement is needed, Proluxe will send the new part at no charge but labor will not be covered unless the unit is still under the 1 year manufacturer warranty.

RETURNED MERCHANDISE POLICY

Should it become necessary to return any of the company's products, the following instructions must be adhered to: First, contact our customer service department for approval and a return authorization number. Please have the serial number of your item available at that time. All merchandise must be shipped freight prepaid by customer or service agency. Subject to the inspection of the product by the company, a restocking charge of 20% of the Net purchased price paid to Proluxe will be assessed. Merchandise may not be returned for credit without prior written approval of Proluxe.

Collect shipments will not be accepted. No returns after 60 days of original shipment date on machines. Purchased parts may not be returned after 30 days. If upon inspection by Proluxe or its authorized agent it is determined the equipment has not been used in an appropriate manner, has been modified,

or has not been properly maintained, or has been subject to misuse, misapplication, neglect, abuse, accident, unauthorized modification, damage during transit, delivery, fire, flood, act or war, riot or act of God, then this warranty shall be deemed null and void.

TERMS & CONDITIONS

1. Price List prices are suggested retail prices and are shown in U.S. Dollars.

2. Terms of Payment: 1% 10 days, NET 30 days.

3. New Accounts: Satisfactory credit information must be provided before open account status can be extended.

Unless agreed otherwise, all shipments will be made C.O.D., Cash in advance.

4. Pricing: Prices, specifications, model numbers, capacities and accessories are subject to change without notice.

5. Freight/Routing: Method of shipment will be determined by Proluxe unless otherwise advised by purchaser.

6. Damaged Claims: All merchandise shipped at purchaser's risk. Inspection must be made

by purchaser at time goods are received. If goods are damaged, the PURCHASER shall request that the agent of the transportation company make a written notation on the proper shipping documents immediately and then file a claim for damages.

Note: Goods damaged in shipping are non-returnable.

7. Returns: Machines may not be returned after 60 days. Purchased parts may not be returned after 30 days. A restocking fee of 20% will be assessed on non-warranty returns.

8. Taxes: Prices indicated herein DO NOT include State, Federal, Local or foreign taxes or duties, nor do they include fees, permits, insurance or other levies, all of which are the responsibility of the purchaser.

9. All orders are subject to acceptance by Proluxe.

10. Possession of this price list shall not be considered an offer to sell.