

Instruction Sheet 246992 for the Installation of Side Heat Shield to Turbofan P85-8 / P8 Proofer & E35-26" Ovens using 246986 Kit



SERVICE WORK ONLY TO BE CARRIED OUT BY QUALIFIED PERSONS

Suitable for the following models:

**E35-26" Oven
EP8 Proofer**

Contents: Qty 1 Side Heat Shield
 Qty 4 Keyhole Bush
 Qty 4 Screw 8B x 3/8" Pan Phil

Qty 1 Drill Template
Qty 1 Drill Bit Ø 3.5mm

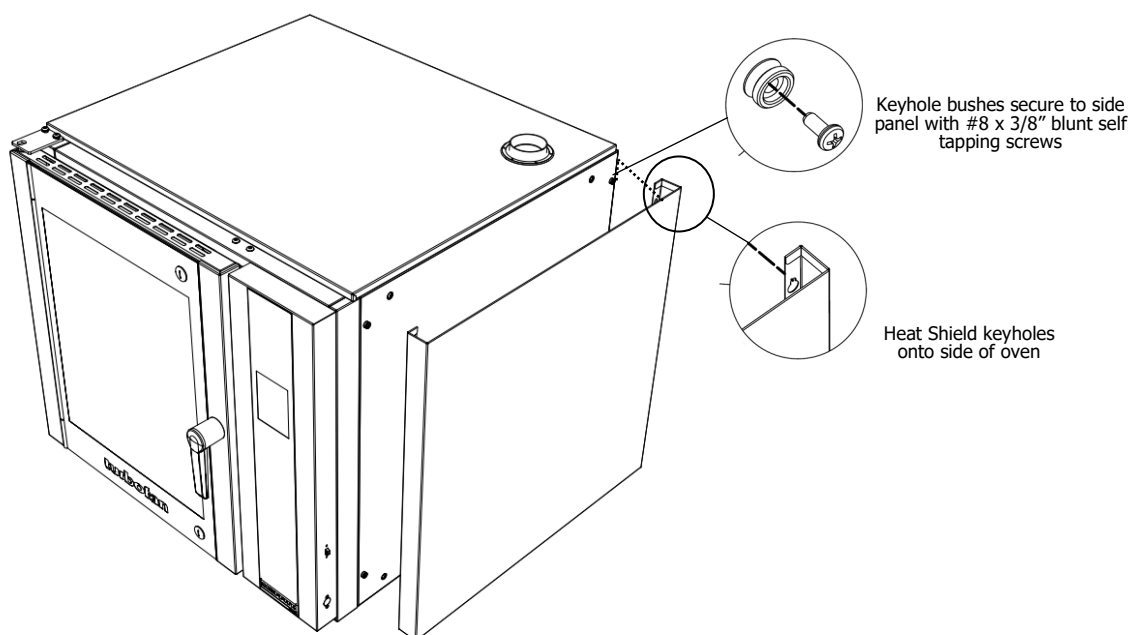
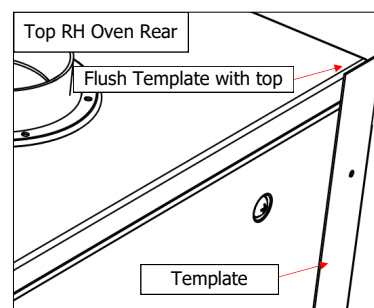
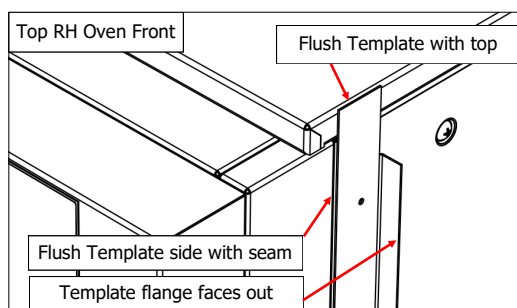
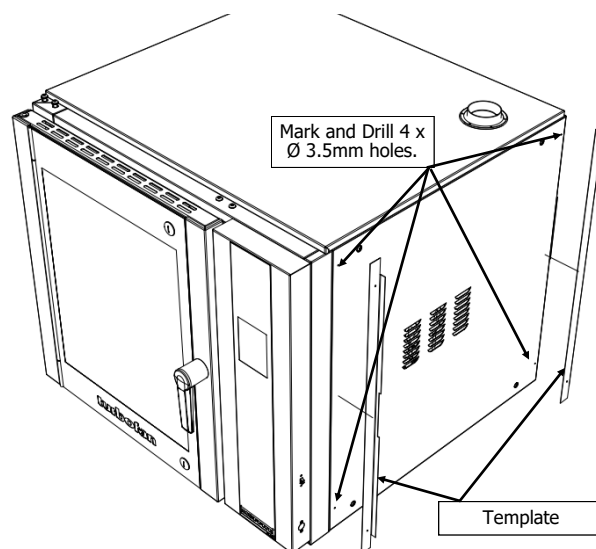


Packed By:-	
Initial	Date

For E35-26" Oven

Fitting Shield to Oven RH Side:

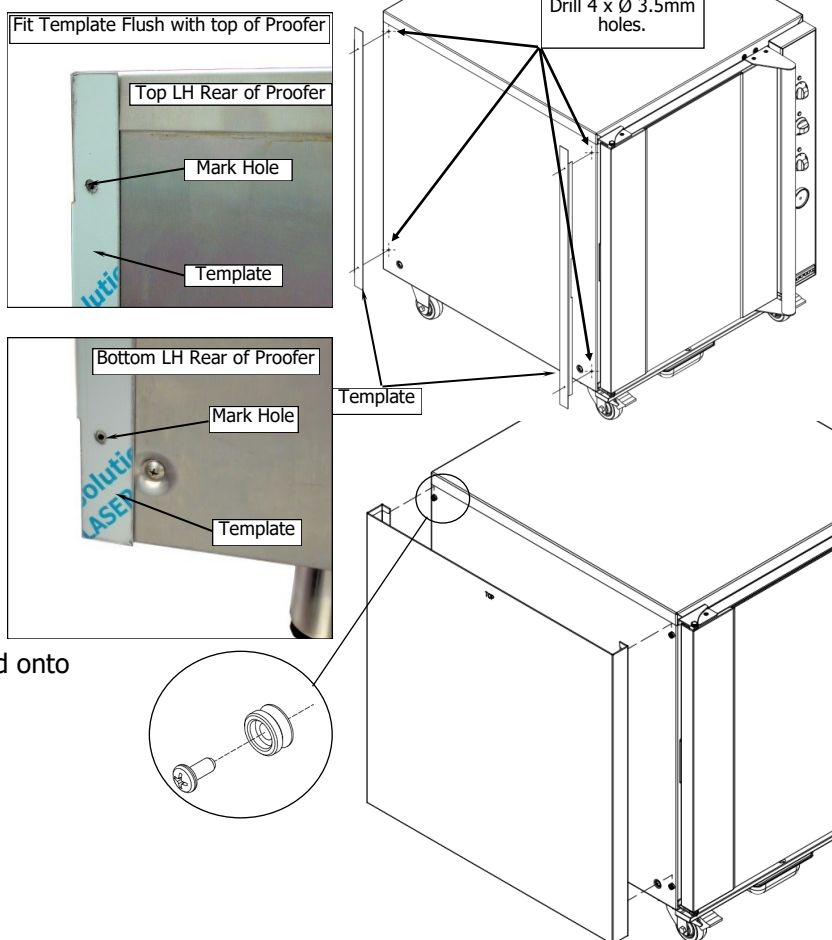
1. Fit template to RH rear side of oven, ensuring the top of template is flush with top of oven.
2. Mark through holes in template.
3. Using the same template, rotate and fit template to RH front of the side panel, ensuring edge of the template is flush with the seam between the side panel and fascia and the top of template is flush with top of oven.
4. Mark through holes in template. Discard template when hole marking is completed.
5. Centre punch the marked holes and carefully drill out the holes using supplied Ø 3.5mm drill.
6. Fit the supplied Keyhole Bushes to the 4 holes in RH Side Panel and secure with 4 screws supplied.
7. Fit supplied Heat Shield to oven by sliding the keyholes in heat shield onto 4 Keyhole Bushes.



For P8 & P85-8 Proofer

Fitting Shield to Proofer LH Side:

1. Fit template to LH rear side of proofer, ensuring that the top of the template is flush with top of the proofer.
2. Mark through holes in template.
3. Using the same template, rotate and fit template to LH front side of proofer, behind the door, ensuring top of template is flush with top of proofer.
4. Mark through holes in template. Discard template when hole marking is completed.
5. Centre punch the marked holes and carefully drill out the holes using supplied \varnothing 3.5mm drill.
6. Fit the supplied Keyhole Bushes to the 4 holes in LH Side Panel and secure with 4 screws supplied.
7. Fit supplied Heat Shield to proofer by sliding the keyholes in heat shield onto 4 Keyhole Bushes.



Fitting Shield to Proofer RH Side:

1. Fit template to RH rear side of proofer, ensuring the top of template is flush with top of proofer.
2. Mark through holes in template.
3. Remove the control panel.
4. Using the same template, rotate and fit template to RH front side of panel, ensuring top of template is flush with top of proofer.
5. Mark through holes in template. Discard template when hole marking is completed.
6. Centre punch the marked holes and carefully drill out the holes using supplied \varnothing 3.5mm drill.
7. Fit the supplied Keyhole Bushes to the 4 holes in LH Side Panel and secure with 4 screws supplied.
8. Refit the control panel.
9. Fit supplied Heat Shield to proofer by sliding the keyholes in heat shield onto 4 Keyhole Bushes.

