



AVAMIX®

CE



Intertek
4007443



Intertek
4007443

Conforms to UL 763
Conforms to NSF/ANSI 8

Commercial Variable Speed Immersion Blenders

Heavy Duty 10" Whisk

928IBHDW10 / 928PIBPPHD
928PIBPPMD

Heavy Duty 12"/14"/16"/18"/21" Shaft

928IBHD12 / 14 / 16 / 18 / 21

Medium Duty 10" / 12" / 16" Shaft

928IBMD10 / 928IBMD12
928IBMD16

09/2024

SAFETY

- 1.** READ AND SAVE ALL INSTRUCTIONS.
- 2.** Do not immerse the immersion blender in water or any other liquid. Doing so can result in electrical shock.
- 3.** Always unplug from outlet prior to handling or cleaning.
- 4.** Avoid contact with moving parts while operating the blender.
- 5.** CAUTION: Blades are sharp. Handle carefully.
- 6.** This immersion blender is not intended for use by children or individuals with impaired mental and/or motor skills. Individuals who lack experience operating a blender need supervision during use.
- 7.** Never remove parts or clean the blender unless it is unplugged from the electrical outlet.
- 8.** Do not use the immersion blender if the cord or plug is damaged. Contact the nearest authorized service agency for repair.
- 9.** Do not use outdoors.
- 10.** Do not allow the power cord to hang over the counter or come in contact with liquids or hot surfaces.
- 11.** Do not place hands or utensils near the immersion blender's blades. Doing so can cause severe personal harm and/or damage to the blender.
- 12.** When blending hot liquids (anything over 100°F), ensure the blades are fully submerged before turning on the blender to avoid splashing.
- 13.** Do not stand directly over the blender while in use.
- 14.** Never leave the immersion blender unattended while operating.
- 15.** Ensure you are using this immersion blender on a properly grounded outlet. This blender comes with a 120V NEMA 5-15P plug. If unsure of your electrical configuration, contact a professional electrician before operating.

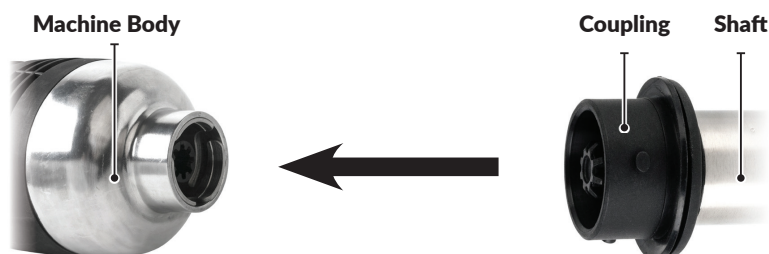
SAVE THESE INSTRUCTIONS

MODELS

| MODEL # | VOLTS | WATTS | SPEED | HP | SHAFT LENGTH |
|--------------|-------|-------|-------------------|-----------------|-----------------------|
| 928IBMD10 | 120V | 450 | 4,000-16,000 RPM | $\frac{3}{4}$ | 10" |
| 928IBMD12 | 120V | 450 | 4,000-16,000 RPM | $\frac{3}{4}$ | 12" |
| 928IBMD16 | 120V | 450 | 4,000-16,000 RPM | $\frac{3}{4}$ | 16" |
| 928IBHD12 | 120V | 850 | 8,000-18,000 RPM | 1 $\frac{1}{4}$ | 12" |
| 928IBHD14 | 120V | 850 | 8,000-18,000 RPM | 1 $\frac{1}{4}$ | 14" |
| 928IBHD16 | 120V | 850 | 8,000-18,000 RPM | 1 $\frac{1}{4}$ | 16" |
| 928IBHD18 | 120V | 850 | 8,000-18,000 RPM | 1 $\frac{1}{4}$ | 18" |
| 928IBHD21 | 120V | 850 | 8,000-18,000 RPM | 1 $\frac{1}{4}$ | 21" |
| 928IBHDW10 | 120V | 850 | 8,000-18,000 RPM | 1 $\frac{1}{4}$ | 10" WHISK |
| 928IB12COMBO | 120V | 850 | 8,000-18,000 RPM | 1 $\frac{1}{4}$ | 12" SHAFT & 10" WHISK |
| 928IB14COMBO | 120V | 850 | 8,000-18,000 RPM | 1 $\frac{1}{4}$ | 14" SHAFT & 10" WHISK |
| 928IB16COMBO | 120V | 850 | 8,000-18,000 RPM | 1 $\frac{1}{4}$ | 16" SHAFT & 10" WHISK |
| 928IB18COMBO | 120V | 850 | 8,000-18,000 RPM | 1 $\frac{1}{4}$ | 18" SHAFT & 10" WHISK |
| 928IB21COMBO | 120V | 850 | 8,000-18,000 RPM | 1 $\frac{1}{4}$ | 21" SHAFT & 10" WHISK |
| 928IBPPMD | 120V | 450 | 4,000- 16,000 RPM | $\frac{3}{4}$ | Not Included |
| 928IBPPHD | 120V | 850 | 8,000-18,000 RPM | 1 $\frac{1}{4}$ | Not Included |

ASSEMBLY

1. Remove the unit from the box and remove all packaging.
2. Clean the unit. Please refer to cleaning instructions on page 3 prior to use.
3. Align and insert the coupling of the shaft or whisk in the clutch of the machine body.
4. Screw the shaft or whisk up to fasten it firmly to the machine body. Listen/feel for a click to confirm secure attachment.
5. Make sure that the connection is tight before turning on the immersion blender.



CLEANING

Wash, rinse, and dry the blending shaft/whisk prior to initial use. Blender blades/shaft/whisk should be cleaned after EVERY use to prevent residue buildup around the blade assembly.

1. Remove the stainless steel shaft from the motor head and rinse under running water.
2. Scrub with soap and warm water. Try Noble Chemical Sunbright (147SUNBRIGHT) with warm water for a thorough clean.
3. To ensure the blade is clean, immerse approximately 3/4 of the length of the stainless steel shaft in a container of the washing solution and run for two (2) minutes on high.
4. Allow time for air drying before next use of the immersion blender.
5. Never put the motor unit and its handle in water. Clean them with a damp cloth or a sponge.
6. Never immerse the whisk holder in water. Clean it with a slightly damp cloth or sponge.
7. It is vital to clean the whisk holder thoroughly between each job using a detergent or disinfectant, but never use pure bleach. For plastic parts, do not use detergents that are too alkaline.

OPERATION

1. Check the cord and plug for damage before operating. DO NOT USE if any damage is noticed. Plug the immersion blender into the 120V outlet. Be sure you are using the correct outlet. Check the cord and plug again before operating.
2. Place the immersion blender into the pot which contains ingredients to be mixed. DO NOT allow more than 3/4 of the shaft to be submerged, as doing so can cause damage to the motor and void the warranty.

3. The safety switch is labeled **ENABLE** and is located on the top of the handle. The **ON/OFF** button is located on the inside of the handle. To start the immersion blender, press the **ENABLE** switch and the **ON/OFF** button simultaneously. The **ENABLE** switch will only need to be pressed once to start the unit. It can then be released while keeping the **ON/OFF** button pressed.



OPERATION

4. The immersion blender has a **VARIABLE SPEED** control knob on the top of the handle. Speed can be adjusted during operation as desired.
 - Turning the knob clockwise **INCREASES** motor speed.
 - Turning the knob counterclockwise **DECREASES** motor speed.The immersion blender has a **LOCK** button that allows for continuous operation without holding down a button. To use this feature, follow instructions above and press the **LOCK** button while **ON/OFF** button is still pressed. Then release the **ON/OFF** button and the unit will function continuously. To stop the unit, press and release the **ON/OFF** button.
5. It is advisable to start at a low speed when using the whisk.
6. To prevent any spills, do not leave the immersion blender on as you remove it from the pot. Always wait to turn the blender on until the blade is near the bottom of the pot.
7. Angle the immersion blender and start to stir while keeping the blade off the bottom of the pot. This will create a vortex-like wave to properly mix the ingredients.
8. Once ingredients are mixed, turn the immersion blender off and wait for it to come to a complete stop.
9. Remove the immersion blender from the pot after it has come to a complete stop. Always unplug the unit when done blending.
10. If blending a recipe with ice, do not use cubed ice or the blades may be damaged.
11. The blades are **SHARP**. Never touch them while in motion or without cut-resistant gloves.

WORKING POSITION

Blender Function

For greater control, we recommend that you hold the blender by the handle and the bottom of the motor unit. Furthermore, we recommend that you tilt the blender at a slight angle to prevent the bell from touching the bottom of the container. Always make sure that the bell is sufficiently immersed to avoid splashing and that the air vents of the motor unit do not come into contact with any liquid. For optimum efficiency, 2/3 of the tube should be immersed in the preparation.

Whisk Function

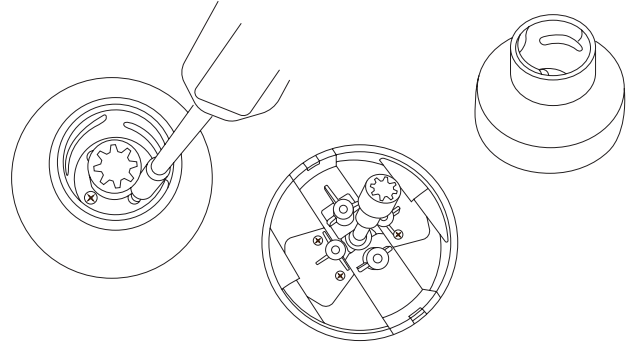
You can also hold the appliance by the handle with one hand, leaving the other hand free to hold the bowl, if necessary. While you process the preparation, we recommend that you move the whisk around in the bowl in order to ensure that the mixture is completely mixed. We strongly advise you to keep the whisk from touching the sides of the bowl. For maximum efficiency, at least 1/5 of the whisk length should be immersed without immersing the whisk holder into the preparation.

REPLACING THE DRIVE COUPLING

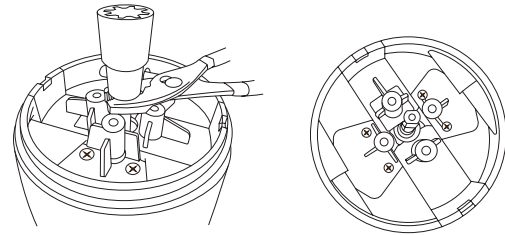
NOTE: AvaMix MD immersion blenders have only two screws, while AvaMix HD immersion blenders have 4.

Part #: 928PIBUSLV

1. Remove the housing cover by removing the screws.

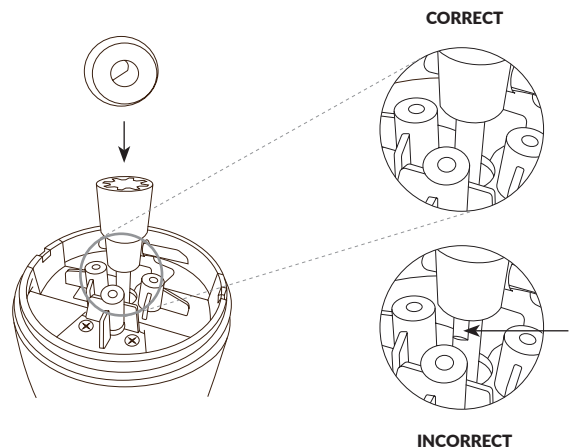


2. Position pliers to pinch beneath the coupling and use the leverage to pry/guide the drive coupling off the shaft. Needle nose pliers work best for this step.

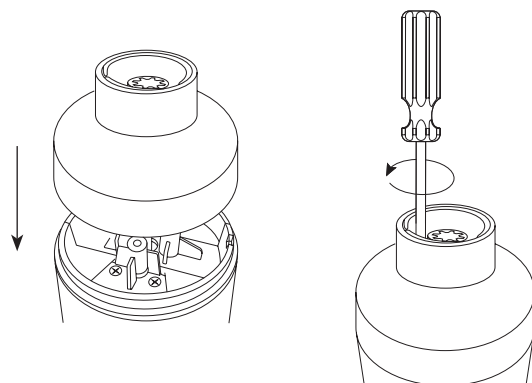


3. Line up the flat inner side of the drive coupling with the flat edge of the shaft. Push the drive coupling down onto the shaft.

NOTE: The shaft should be lined up correctly with the drive coupling.



4. Replace the housing cover and screw into place.



TROUBLESHOOTING

If the machine does not power on and it has been unplugged, release the ON/OFF button, check the power supply, and then restart the appliance.

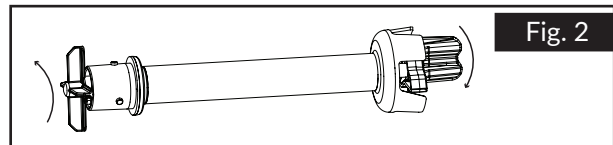
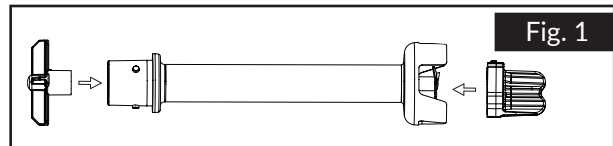
If the machine overheats, release the ON/OFF button, and then unplug the appliance. Wait a few minutes for the motor to cool down and the thermal safety mechanism to be reset, and then restart the appliance. If you cannot locate the cause of the problem, release the ON/OFF button, unplug the appliance, and check:

1. The state of the plug.
2. That the blades are free to rotate in the bell.
3. The state of the power cord.
4. That the drive shaft is free to rotate. To do this, remove the bell and test the rotation of the end of drive shaft manually.

ACCESSORIES

| ITEM # | DESCRIPTION |
|--------------|--------------------|
| 928PIB10WHSK | 10" Whisk |
| 928PIB10STCK | 10" Shaft |
| 928PIB12STCK | 12" Shaft |
| 928PIB14STCK | 14" Shaft |
| 928PIB16STCK | 16" Shaft |
| 928PIB18STCK | 18" Shaft |
| 928PIB21STCK | 21" Shaft |
| 928PISBWH | Wallhanger |
| 928PIBBRT | Blade Removal Tool |
| 928PIBSBRACK | Support Bracket |

BLADE REMOVAL KIT



1. Purchase the blade removal tool (#928PIBBRT).
2. Fix the blade removal kit on both sides of the shaft (Fig. 1).
3. Turn the blade removal kit counterclockwise from both sides at the same time (Fig. 2).

