

# LAVEX 6-GALLON CARPET EXTRACTOR

Please fill out the following information:

Model No: \_\_\_\_\_

Serial No: \_\_\_\_\_

Distributor Name: \_\_\_\_\_

Distributor Phone No: \_\_\_\_\_

Date of Purchase: \_\_\_\_\_

# LAVEX™

Phone: 717-392-7472

[www.lavexproducts.com](http://www.lavexproducts.com)

## SAFETY, OPERATION AND MAINTENANCE MANUAL WITH PARTS LIST

Please read before use!

### 100 PSI PUMP, 3-STAGE MOTOR

Models:

842CD63ST4, 842CD63ST12

842HT63ST4, 842HT63ST12



# LAVEX™

## IMPORTANT INFORMATION AND SAFETY INSTRUCTIONS

Serial No: \_\_\_\_\_

**LAVEX 6-GALLON CARPET EXTRACTOR**  
Heated and Non-Heated Units



Manufactured with  
Pride in the U.S.A.



---

**Dear Valued Client,**

Congratulations on the purchase of your 6-Gallon Carpet Extractor! The world of carpet cleaning is becoming more high-tech and competitive and we strive to provide you with the most innovative products. Our Carpet Extractor is yet another example of this, bringing a new dimension to restoration and carpet cleaning.

Please review this manual, paying careful attention to the Safety Instructions Section. Keep in mind that any unnecessary damage, neglect or abuse of this machine will void your warranty. You can be confident that simple maintenance will ensure that your Carpet Extractor provides quality performance for many years to come.

If warranty questions arise, please consult your manual or contact your distributor. Should you have any questions regarding maintenance, replacing parts or ordering parts, please call an authorized distributor.

Before you begin using your Carpet Extractor, thoroughly review the Owner's Manual.

Again, congratulations on the purchase of your 6-Gallon Carpet Extractor!

**Questions or Comments?**

Phone: 717-392-7472

Visit our website at: [www.lavexproducts.com](http://www.lavexproducts.com)

---

## Table of Contents

New Equipment Warranty.....	3
Returned Material Authorization (RMA) Procedure .....	4
1.0 Safety Instructions .....	4
2.0 Grounding Instructions.....	5
3.0 Prepare Unit For Use .....	6
4.0 Maintenance .....	6
5.0 Problem Solving .....	7
6.0 How to Use Heater & Maintenance.....	8
7.0 Machine Schematic Drawing .....	9
8.0 Machine Parts List .....	10

## New Equipment Warranty

Lifetime on body, 2-years on vacuum motors, 2-years on 100 PSI pump and all electrical components, 90-days on tools and accessories.

### Warranty Policy

All equipment is inspected and tested before shipping from the manufacturer. All parts are warranted to be new and free from defects in workmanship and material, under normal use to the original retail purchaser. This warranty limits manufacturer's liability for defects in workmanship or materials for replacement of defective parts only. The manufacturer accepts no liability for incidental or consequential damages arisen from the use of any equipment, defective or not. This warranty is in lieu of all expressed or implied warranties and is extended only to the original retail purchaser. Manufacturer sales and service representatives are not authorized to waive or alter the terms of this warranty, or to increase the obligations of the manufacturer under the warranty. Parts replaced or repaired under this warranty are warranted for the remainder of the original warranty period.

Labor is only provided by authorized service centers. If an authorized service center is not near you, it is the purchaser's responsibility to take their machine to an authorized service center. International clients are responsible for all shipping needed for complete warranty. Freight charges and travel charges are not covered by the manufacturer.

The manufacturer covers up to one (1) year (365 days) of service labor at the manufacturer's calculated hourly labor rate/repair time when performed by a manufacturer-authorized service provider. Ultimately, labor reimbursement costs are at the discretion of the manufacturer. At no time is the manufacturer responsible for travel time to complete on-call repairs. After one (1) year, the original retail purchaser is responsible for all labor costs with no manufacturer reimbursement.

The original purchaser must contact the manufacturer to follow correct RMA/warranty procedures. No returns shall be authorized unless the proper RMA procedures are followed. It is the responsibility of the distributor to repair the client's equipment as soon as possible.

The manufacturer charges a 25% restocking fee for any items that are being returned to stock. Items must be new, unused, free of damage and are only good for up to 30 days. After 30 days, the manufacturer does not accept the return of any items for credit.

Authorized warranty replacement parts need to come directly from the manufacturer. Any use of any other parts will void warranty.

The manufacturer does not reimburse for parts used by client that were not supplied directly for the machine under warranty.

The client must contact the manufacturer prior to working on or changing out of any parts, etc. Do not send parts or equipment back to the manufacturer without an RMA Number and approval. No labor will be paid for, nor parts cost paid for or reimbursed, that have not previously been approved by the manufacturer. All warranty work must be approved and authorized to qualify, and appropriate warranty procedures must be followed.

The warranty starts on the purchase date by the original purchaser from an authorized distributor, subject to proof of purchase. If proof of purchase cannot be identified, the warranty start date is ninety (90) days after the date of sale to the authorized distributor.

## 8.0 Machine Parts List Continued

Drawing No.	Item No.	Description	Quantity
54	10-0921	Aluminum Box for Dual Rod Heater	1.00
55	10-0920	Dual Rod Heat Exchanger Tube	1.00
56	10-0906	Box for Tubular Heater	1.00
57	80-0022-A	Screw for Panel	4.00
58	10-0204	Motor Mount Back-Up Washer	3.00
59	10-0901	175 psi Relief Valve for Heater	1.00
60	80-0010	1/4" Brass Tee	1.00
61	80-0011-2	90 Degree Street Elbow	1.00
62	80-0026	3/8 Barb x 1/4 MPT 90 Degree	3.00
63	10-0843	3/8" Black Hose for Extractor	6.00
64	10-0356	3/8 MNPT x 3/8 Barb 90 Degree	2.00
65	10-0834	Pump Flat Washer	37.00
66	10-0835-N	Nut for Pump Bolt on Extractor	12.00
67	10-0812	100 psi Extractor Pump	1.00
68	10-0835-B	Pump Bolt 100 psi	4.00
69	10-0868	1/4" Female QD for Extractor	1.00
70	80-0004-A	1/4" x 1-3/4" Brass Nipple	1.00
71	10-0843	3/8" Black Hose for Extractor	3.00
72	10-0843	3/8" Black Hose for Extractor	3.00
73	80-0017	Bulk Head fitting for Extractor	2.00
74	10-0416-A	1-1/2" Black ABS Stand Pipe	12.50
75	80-0070	1-1/2 PVC Elbow 45 Degree	1.00
76	10-0416-A	1-1/2" Black ABS Stand Pipe	12.50
77	80-0017	Bulk Head fitting for Extractor	2.00
78	10-0400-C	Keeper Latch for Extractor	1.00
79	10-0832	S/R Strap Bolts	2.00
80	10-0831	S/R Bracket for Extractor	1.00
81	10-0818	S/R Top of Tank Bolt on Extractor	1.00

## Returned Material Authorization (RMA) Procedure

Please contact Lavex at 717-392-7472 prior to working on or changing out any warranty parts, etc. for pre-approval. Please have the following ready and available: Serial Number and Model Number of the Machine, Date of Purchase or End-User Date of Purchase, Detailed Description of the Problem and Photos of the Problem Area and Inside of the Machine.

If parts or a piece of equipment is approved to be returned, an RMA will be issued. The RMA Number needs to be written on the box with the item to be returned. There is a 25% restocking fee on any returned merchandise not under warranty or with no issues found upon inspection.

Warranties will be issued for items with a manufacturer defect and will not apply to normal wear-and-tear or abuse. We reserve the right to refuse warranties in cases of abuse, including but not limited to rust, corrosion (water damage), dents, ingestion of foreign matter, or items modified from its original design and unauthorized labor on repairs.

If a new part or pieces of equipment has been approved under warranty, the new item will be sent out under the RMA Number. Freight charges will be applied to any warranty after 90 days of original purchase or any expedited shipping requests. Pumps, motors and heaters being replaced after 90 days must be returned to Lavex at your or your customer's cost in order to determine manufactures defect.

Do not send parts or equipment back to Lavex without an RMA Number and approval. No labor will be paid, nor parts cost reimbursed, that has not been previously approved by the manufacturer. All warranty procedures must be strictly followed.

## 1.0 Safety Instructions

**READ THIS MANUAL BEFORE USING YOUR CARPET EXTRACTOR. KNOW THE PROPER OPERATION, CORRECT APPLICATIONS AND THE LIMITATIONS OF THIS EQUIPMENT BEFORE USE.**

### Reduce the Risk of Fire, Electric Shock or Injury:

- Use only as described in this manual. Use only the attachments recommended by the manufacturer.
- Test all outlets with an outlet tester before plugging machine into any outlet. Plug cord into the nearest grounded outlet.
- DO NOT unplug by pulling on the cord, grasp the plug. DO NOT pull unit by the cord.
- Keep cord away from heated surfaces.
- Never attempt adjustments or repairs while the machine is plugged in.
- DO NOT use if cord or plug are damaged.
- DO NOT use outdoors, in standing water on wet surfaces.
- Pay close attention when using machine near children.
- DO NOT pick up flammable or combustible materials or use machine where they may be present.
- DO NOT leave machine outdoors, in extreme heat or cold. Harsh weather elements will damage components and void warranty.
- Lift using only the appropriate handles.
- Always wear the appropriate clothing and safety equipment when operating the machine.
- Keep all body parts, hair and loose clothing away from openings and moving parts.
- Use extra care when cleaning stairs. Never move the machine up or down stairs with fluid in the machine.
- Use common sense to protect yourself and others from injury when using the machine.

## 2.0 Grounding Instructions

**DANGER: IMPROPER GROUNDING METHOD CAN RESULT IN A RISK OF ELECTRIC SHOCK.**

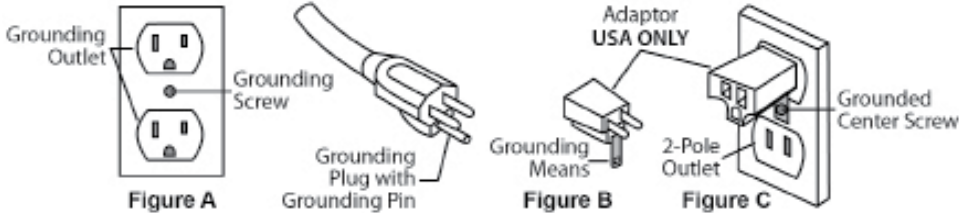
Electrical equipment must be grounded. If the machine should malfunction or breakdown, grounding provides a path of least resistance for electrical current to reduce the risk of electric shock. The Carpet Extractor is equipped with a cord containing a grounding conductor and grounding plug. The plug must be inserted into an appropriate outlet that is properly installed and grounded in accordance with all local codes and ordinances.

If repair or replacement of the cord or plug is necessary, DO NOT connect the grounded wire to a flat bed terminal. The grounding wire is the wire with insulation and an outer green surface, with or without yellow stripes.

### Grounding Method

The equipment is for use on a normal 120 Volt circuit. It includes a grounded plug (plug shown in Figure A). A temporary adapter (Figure B and C) may be used to connect this plug into a 2-pole receptacle (Figure B) if a properly grounded outlet is not available.

The temporary adapter should be used only until a properly grounded outlet (Figure A) can be installed by a qualified electrician. The green colored rigid ear lug or the like extending from the adapter must be connected to a permanent ground, such as a properly grounded outlet box cover. Whenever an adapter is used, it must be held



in place by a metal screw.

### WARNING:

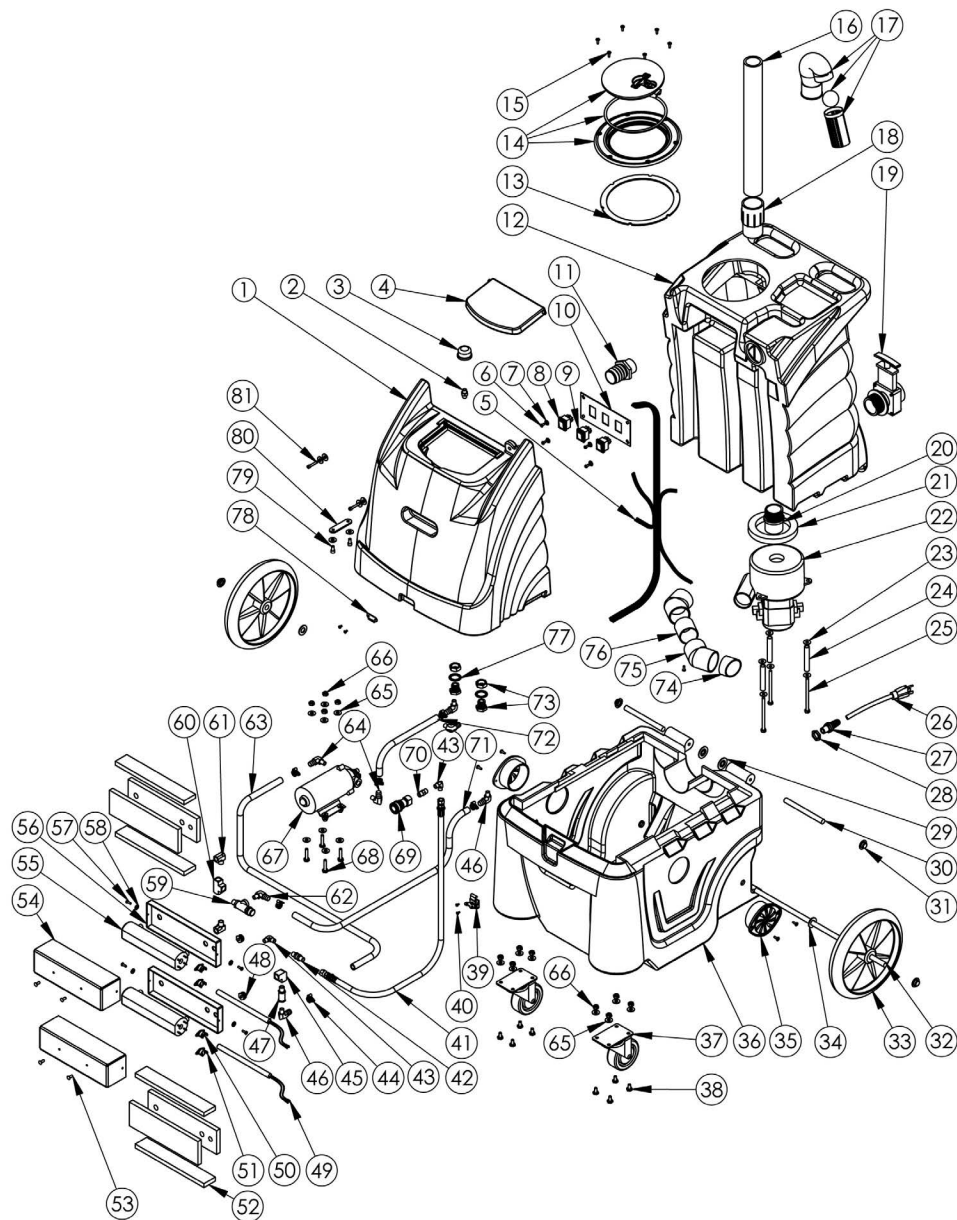
Improper connection of the equipment grounding conductor can result in a risk of electric shock. Check with a qualified electrician or service person if you are in doubt as to whether the outlet is properly grounded. DO NOT modify the plug provided with the equipment. If the plug will not fit into the outlet, have a proper outlet installed by a qualified electrician.

**NOTE:** In Canada, the use of a temporary adapter is not permitted by the Canadian Electrical Code.

## 8.0 Machine Parts List

Drawing No.	Item No.	Description	Quantity
1	SN-6-ST-LAVEX BLUE	12-Gallon Solution Tank - Lavex Blue	1.00
2	10-0479	1/4" Male Close Nipple	1.00
3	10-0845	1/4" Strainer for Extractor	1.00
4	SN-6-L-DRGRY	12-Gallon Lid - Dark Grey	1.00
5	80-0200	Extractor Harness	1.00
6	10-0379	8-32 x 3/8 Screw	8.00
7	10-0204	Motor Mount Back-Up Washer	3.00
8	10-0803	Splash-proof Switch for Extractor	3.00
9	10-0803	Splash-proof Switch for Extractor	3.00
10	10-0809	Extractor 3-Hole Switch Plate	1.00
11	10-0806	Barb Hose Fitting for Extractor	1.00
12	SN-6-RT-LAVEX BLUE	12-Gallon Recovery Tank - Lavex Blue	1.00
13	10-0804-A	Hatch Cover Gasket for Extractor	1.00
14	10-0804	Hatch Cover for Extractor	1.00
15	10-0419-A	Screw for Extractor Hatch	12.00
16	10-0416-A	1-1/2" Black ABS Stand Pipe	12.50
17	80-0012	Shut-Off Assembly for Extract.	1.00
18	80-0008	1.5 PVC Female Adapter	1.00
19	10-0805	Dump Valve for Extractor	1.00
20	10-0849	1-1/2 ABS Fitting	1.00
21	10-1030-S3	3-Stage Extractor Motor Gasket	1.00
22	10-0810	3-Stage Extractor Motor	1.00
23	10-0834	Pump Flat Washer	37.00
24	80-0121	Spacer 6-Gallon Extractor Motor	9.00
25	10-0833-6	Motor Mount Bolt for 6-Gallon	4.00
26	10-0838	Pigtail for Extractor	1.00
27	10-0850	Strain Relief for Extractor	1.00
28	10-0851	Strain Relief Nut for Extractor	1.00
29	10-0830	Hinge Keeper for Extractor	2.00
30	10-0821-6	6-Gallon Extractor Hinge	2.00
31	10-0820	End Cap for Rod on Extractor	4.00
32	10-0836-6	16-3/8" Axle for 6-Gallon Extractor	1.00
33	10-0807	Wheels for Extractor	2.00
34	10-0840	Nylon Washer for Extractor Axle	2.00
35	10-0822	Exhaust Grate for Extractor	3.00
36	SN-6-MB-DRGRY	6-Gallon Motor Base - Dark Grey	1.00
37	10-0808	Caster for Extractor	2.00
38	10-0835	Pump Bolt 200 & 500 psi	4.00
39	10-0400-D	Latch for Extractor	1.00
40	10-0379	8-32 x 3/8 Screw	8.00
41	80-0040	3000 psi Hose for Extractor	3.75
42	80-0041	1/4 FJIC Crimp Fitting	2.00
43	10-0801-I	90 FPT for Extractor Heater	2.00
44	10-0826	3/4" Hose Clamp for Extractor	6.00
45	10-0852	1/4" 90 Degree Brass Elbow	2.00
46	80-0014	3/8" B x 1/4" F 90 Degree	1.00
47	80-0101-M	1/4" Male Check Valve	1.00
48	10-0907	Strain Relief for Tube Heater	2.00
49	10-1500-B	Heater Element 600 Watt	2.00
50	10-0814	Sensor for Extractor Heater	2.00
51	10-0814-B	Manual Sensor for Heater	2.00
52	10-0921	Aluminum Box for Dual Rod Heater	1.00
53	80-0022-A	Screw for Panel	4.00

## 7.0 Machine Schematic Drawing



## 3.0 Prepare Unit for Use

DO NOT USE ON WET SURFACES. DO NOT EXPOSE TO RAIN. STORE INDOORS.

- All Carpet Extractors, no matter what the time of year, are shipped with antifreeze in the solution lines. Prior to first use, fill the tank with one quart of warm water. Attach the hose and using the hand tool wand, flush out the system by spraying the one quart of water through the pump.
- Attach the 1-1/2 inch vacuum hose and the brass quick disconnect.
- Fill the base unit (the recovery tank must be removed) with warm water (less than 100 degrees Fahrenheit). Fill to approximately 4 inches from the top. Use a liquid detergent made for carpet cleaning or upholstery. Read and mix to the dilution ratios as directed.

### Electrical

Plug cord(s) into 20 AMP grounded wall outlet(s). 20 AMP circuits are normally found in kitchens and bathrooms. Never remove ground prong from the plug. If a circuit breaker trips during operation, turn machine off, reset the breaker and move the electrical cord to a different outlet and resume operation.

### Vacuum System

The extractor uses a single vacuum motor system that provides outstanding water lift and air flow.

**Automatic Vacuum Shut-Off:** The float assembly shut-off, located in the recovery tank on the vacuum stand pipe, prevents the waste tank from overflowing into the stand pipe and damaging the vacuum motor. The float assembly will cut-off vacuum to the waste tank. When this happens, immediately turn off the vacuum motor and empty the waste tank.

It is also necessary to use low foaming chemicals or defoamer to eliminate foam buildup in the recovery tank and damage to the vacuum motor. If moisture does enter the vacuum motor, it is necessary to WD-40 the motor. Remove the float assembly from the stand pipe and turn on both vacuum motor. Spray a five second burst of WD-40 into the stand pipe and continue to let the vacuum motor run for three minutes.

## 4.0 Maintenance

Regular maintenance is required to keep your carpet extractor in proper working condition. Thoroughly clean all equipment and accessories after each use:

- Rinse the solution and recover tanks with clean water.
- Flush the pump system with clean water, including all hoses and wand(s).
- Do not allow water to remain in the tanks after use.
- Lubricate all quick disconnects with WD-40 or similar lubricant.

## 4.0 Maintenance Continued

### Storing your Carpet Extractor

You must winterize your carpet extractor to protect the pump system from freezing. Damage due to freezing is not covered under the Warranty. Store your extractor in temperatures over 40 degrees Fahrenheit. Although this is not recommended, if you plan on storing your extractor in freezing conditions, you must prime your extractor with antifreeze.

## 5.0 Problem Solving

Never operate this carpet extractor when the equipment is not performing as expected or when any part is visibly damaged. When repair is needed, take the equipment to an authorized service center.

System	Problem	Possible Cause	Remedy
Vacuum System	No Vacuum / Weak Vacuum	<ol style="list-style-type: none"><li>1. Vacuum Tank Full</li><li>2. Float Shut-Off Tank Screen Dirty</li><li>3. Float Ball Stuck</li><li>4. Damaged or Loose Vacuum Hose</li><li>5. Dump Valve Open</li><li>6. Access Lid not Sealed</li><li>7. Vacuum Hose Clogged</li><li>8. Air Intake Grid Clogged</li><li>9. Leak in Recovery Tank</li><li>10. Water Coming out of Vacuum Exhaust</li></ol>	<ol style="list-style-type: none"><li>1. Empty Tank</li><li>2. Clean the Screen with Water</li><li>3. Tap Float to Unstick then Clean</li><li>4. Attach or Replace</li><li>5. Close Valve</li><li>6. Replace Gasket</li><li>7. Clear Debris</li><li>8. Clean</li><li>9. Clean and Dry Area, Patch with Silicone</li><li>10. Use a Low Foaming Detergent</li></ol>
	Unit will not Turn On	<ol style="list-style-type: none"><li>1. Extension Cord not Plugged In</li><li>2. Switch not in the "On" Position</li><li>3. Building Circuit Overloaded</li><li>4. Wiring Connections Loose</li></ol>	<ol style="list-style-type: none"><li>1. Check if Machine and Cord are Plugged In</li><li>2. Check Switches, Replace if Necessary</li><li>3. Reset Circuit</li><li>4. Unplug Machine and Check for Loose Wires</li></ol>
	Burning Smell	<ol style="list-style-type: none"><li>1. Vacuum Motor Hung Up</li><li>2. Pump Motor Hung Up</li></ol>	<ol style="list-style-type: none"><li>1. Replace Vacuum Motor</li><li>2. Replace Pump</li></ol>
Pump System	Pump is not Running Properly	<ol style="list-style-type: none"><li>1. No Power to the Pump</li><li>2. Jets on Wand are Clogged</li><li>3. In-Line Water Filter is Clogged</li><li>4. Debris in Solution Tank Covering Inlet</li><li>5. Kinked or Loose Hose</li><li>6. Pump Failed</li><li>7. Quick Disconnects are not Completely Locked Together</li><li>8. Heater is Clogged with Deposits</li><li>9. Pump is Pulsating</li><li>10. Auto Prime Valve is Open</li></ol>	<ol style="list-style-type: none"><li>1. Check the Electrical System</li><li>2. Clean Jet Filters</li><li>3. Clean In-Line Filter</li><li>4. Clear Debris</li><li>5. Check and Replace Hoses if Necessary</li><li>6. Replace Pump</li><li>7. Snap Quick Disconnects Together\</li><li>8. Flush Heater with System Maintainer or Replace if Necessary</li><li>9. Check for Clogged Jets and Clean</li><li>10. Close Valve</li></ol>

## 6.0 How to Use Heater & Maintenance

### Preventative Instructions for Heater Use

#### Before Initial Use

- Drain antifreeze from the machine system.
- Ensure secure outlet connection with no loose parts.
- Confirm correct pigtail attachment.
- Use only Lavex-approved extensions to prevent malfunctions.
- For long-term storage, use antifreeze every two months, especially in hot areas to prevent scale buildup.
- In cold climates, use antifreeze and store the unit in a location above 65°F to prevent heater damage.

#### During Heater Use

- Activate both pump and heater buttons simultaneously.
- Allow 5 minutes for water to heat with pump running before use.
- Alternate between 5-minute vacuuming and 5-minute hot water use intervals.
- Allow at least 2 minutes for hot water to flow from the unit.
- DO NOT pour hot water into the solution tank.

#### After Heater Use

- Rinse the machine system with a 50/50 vinegar-water solution (5 gallons for extractors), then flush with water to maintain pump and system condition.