

Replacement Parts



List EmberGlo® Steamer Model ES10PB

*Tap Water Operation
Designed to Operate
Without Distilled Water*

Manual Push Button Operation
Steamer with Direct Water Hookup
Full Size Food Pan



Model	Description	Volts	BOM
ES10PB	Manual Push Button with Direct Connect Water Hook-up	240V	5401000
Installation and Service Manual - 8470-77			
Model ES10 first construction May 1983			

Items listed are replacement parts for the current Model ES10 Tap Water Steamer and its components.

- EmberGlo Steamers do not require a separate hood for vapor produced during operation according to the Uniform Mechanical Codes per the International Conference of Building Officials Code.
- Please be advised that ES10 units sold prior to 2024 may contain different stainless steel components compared to current models. As of now, original parts for these earlier units are no longer available for purchase.
- Replacement parts for these units should still fit, though they may appear slightly different in design.



EmberGlo®

EmberGlo
A Div of Midco® International Inc.
4140 West Victoria Street
Chicago, Illinois 60646
toll free 866.705.0515
tel 773.604.8700
fax 773.604.4070
web www.emberglo.com
e-mail sales@emberglo.com

AVOID ERROR IN PARTS SELECTION. When ordering use complete MIDCO Part Number and Description. Furnish Burner Model Number, Bill of Material Number and Serial Number (if available) from the specification plate found on the product.

IMPORTANT: Availability of parts as well as specifications are subject to change without notice. Please consult factory for item availability.



Quality Designed for Proven Performance

1224
8472 62
Printed in USA

ES10 Exploded View

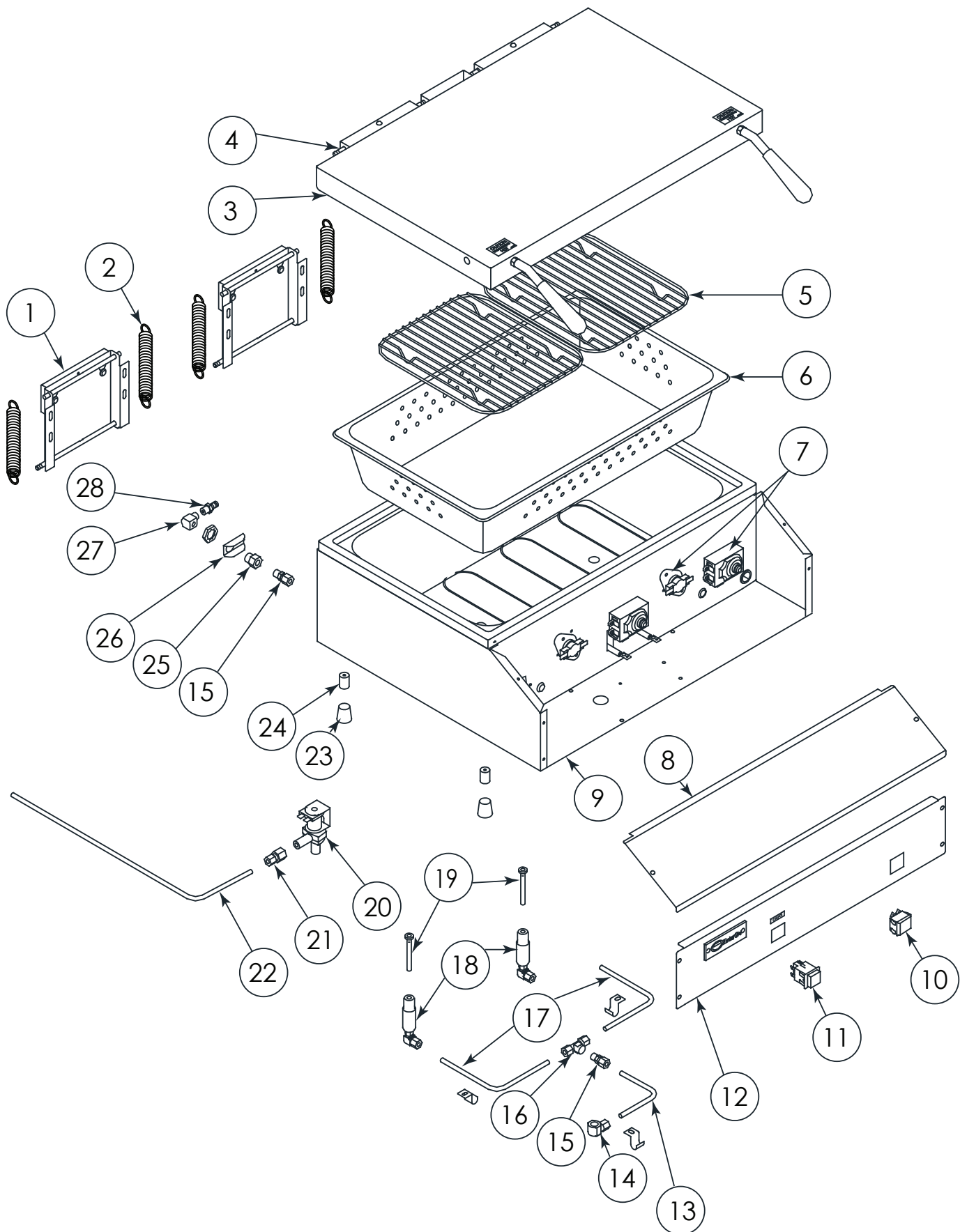


Figure 1 - ES10 Parts

ES10 Parts List

Item #	Part #	Description	Qty	Item #	Part #	Description	Qty
1	1421-45	Back Hinge Kit (Less Spring Bar & Spring)	2	Not Shown			
2	1420-40	Hinge Spring	4	1408-70	Hose Assembly (Complete)		1
3	2522-00R	Lid Assembly	1	2532-00	Power Cord Assembly		1
4	1420-00	Spring Bar	4	8408-96	Hubbel Receptacle		1
5	5608-50	Food Pan Grid	2	Accessories - Not Shown			
6	2527-00	Food Pan	1	5682-60	Tortilla Grid		
7	2500-12	Thermal Fuse / Thermostat Kit	2	5608-70	Three in 1 Basket Kit w/ Handle		
8	2516-00	Control Access Cover	1	5608-72	1/2 Size Basket w/ Handle		
9	2511-00	Bottom Panel	1	5608-73	Two 1/4 Size Baskets w/ Handle		
10	8423-34	Lighted On-Off Dpst Switch	1	2070610	Egg Poacher 4 Cup		
11	8423-36	Push Button Switch	1	2070615	Egg Poacher 6 Cup		
12	2512-22	Switch Panel	1	8450-62	Steam Generator Cleaning Brush		
13	2514-00	Solenoid Water Tube	1				
14	8483-16	1/4" FPT x 1/4" T Brass Comp. El	1				
15	8483-14	1/8" M x 1/4" T Straight Brass Comp. Fit	2				
16	8483-20	1/4" T x 1/4" T X 1/8" F Comp. Tee	1				
17	2515-00	Left and Right Water Inlet Tube	2				
18	1402-70	Water Inlet Assembly (Complete)	2				
19	1411-20	Nozzle and Spring Assembly	2				
20	8402-26	1/4" NPT Solenoid Valve – 120V	1				
21	8483-49	1/4" x 1/4" T Str. Connect	1				
22	2513-00	Water Inlet Tube	1				
23	8450-25	Rubber Foot	4				
24	5661-80	Aluminum Leg	4				
25	1408-40	Bulkhead Fitting	1				
26	1409-90	Bulkhead Retainer	1				
27	8483-15	1/8" Brass Street El	1				
28	8451-47	Quick Connect Insert	1				

ADJUSTABLE HINGE FOR 2-POSITION LID OPENING (60° OR 90° OPEN)

First construction January 29, 1990 (date code 0590). Steamers built before this date featured a 90° opening lid. Replacement parts for the early construction are no longer available. When replacing, order 1421-45 Back Hinge Replacement Kit.

Item #	Part #	Description	Qty
1	1421-40	Adjustable Upper Hinge	1
2	1421-51	Lid Stop Rivetment	1
3	1421-41	Upper Hinge Bar	1
4	1421-01	Adjustable Lower Hinge	1
5	8432-08	5/16" x 3/16" O-Ring	2

