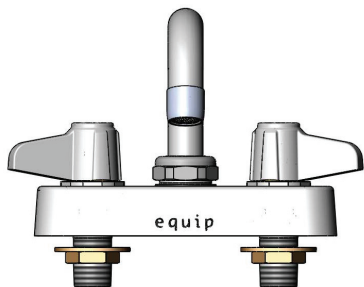


# Installation and Maintenance Instructions

## EQUIP 4" & 8" DECK MOUNT WORKBOARD FAUCETS



### Limited One Year Warranty

Equip warrants to the original purchaser (other than for purposes of resale) that such product is free from defects in material and workmanship for a period of one (1) year from the date of purchase. During this one-year warranty period, if the product is found to be defective, Equip shall, at its option, repair and/or replace it. To obtain warranty service, products must be returned to...

Equip Foodservice Accessories  
Attn: Warranty Repair Department  
P.O. Box 1088, 2 Saddleback Cove  
Travelers Rest, SC 29690

Shipping, freight, insurance, and other transportation charges of the product to Equip and the return of repaired or replaced product to the purchaser are the responsibility of the purchaser. Repair and/or replacement shall be made within a reasonable time after receipt by Equip of the

returned product. This warranty does not cover items which have received secondary finishing or have been altered or modified after purchase, or for defects caused by physical abuse to or misuse of the product, or shipment of the products.

Any express warranty not provided herein, and any remedy for Breach of Contract which might arise, is hereby excluded and disclaimed. Any implied warranties of merchantability or fitness for a particular purpose are limited to one year in duration. Under no circumstances shall Equip be liable for loss of use or any special consequential costs, expenses or damages.

Some states do not allow limitations on how long an implied warranty lasts or the exclusion or limitation of incidental or consequential damages, so the above limitations or exclusions may not apply to you. Specific rights under this warranty and other rights vary from state to state.

**equip**  
Foodservice Accessories  
equip Foodservice Accessories  
P.O. BOX 1088, 2 SADDLEBACK COVE  
TRAVELERS REST, SOUTH CAROLINA 29690  
PHONE: 800.891.4808 FAX: 800.868.0084

## Part Numbers

### Equip Faucet Parts List

Ceramic Cartridge, Hot	013787-45
Ceramic Cartridge, Cold	013788-45
Screw, Handle (Colored)	
Screw, Blue Head (Cold)	014455-45
Screw, Red Head (Hot)	014456-45
Lever Handle Kit with (2) Color Coded Screws	5-HDL-L
Wrist Action Handle Kit with (2) Color Coded Screws	5-HDL-W
Gooseneck & Nozzle Options	
5-1/2" Swing Gooseneck with Laminar Outlet	5SP-05
6" Swing Nozzle with Laminar Outlet	5SP-06
8" Swing Nozzle with Laminar Outlet	5SP-08
10" Swing Nozzle with Laminar Outlet	5SP-10
12" Swing Nozzle with Laminar Outlet	5SP-12
Nut, Swing Spout	013839-25
O-Ring, Swing Spout	013848-45

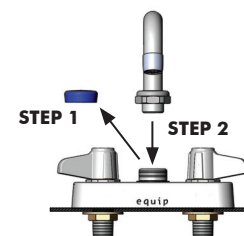
## Instructions

### Swivel Spout/Gooseneck Installation:

Note: Silicone grease is applied to the interior swivel cavity of the body prior to shipment.

No additional grease is required.

1. Remove plastic cap from body outlet.
2. Insert spout/gooseneck into body cavity.
3. Tighten swivel lock nut using 1 5/16" wrench.



### Faucet Body Installation:

4. Drill two holes, approximately 1" diameter, in mounting surface. Holes must be either 4" or 8" between centers, depending on the model to be installed.
5. Apply plumbers putty to bottom face of escutcheon to seal against the mounting surface. Insert 1/2" male pipe inlets through holes in the mounting surface and loosely secure with washers and locknuts provided.
6. Tighten locknuts to secure faucet to the mounting surface.
7. Connect water supply and check for leaks.