

**-SPECIFICATION-
MODEL: QC060872WLN-O**

Standard Features and Specs

- * 4" thick NAKS-XPS4 insulation providing R-29 for coolers and R-32 for freezers
 - * 50 year thermal warranty on insulation
 - * 15 year panel warranty
 - * 1 year parts warranty
- Standard Features and Specs
- * 30" x 76" Left hinged flush door

- * 2 super cam-rise spring assisted hinged
- * Interior safety lock release handle
- * Spring actuated door closer
- * Digital LED thermometer with pilot light switch
- * Vapor-proof light centered on interior jamb
- * 26 guage Acrylume, corrosion resistant, stucco embossed on all interior and exterior surfaces.
- * Floorless walk-ins are supplied with NSF vinyl screed
- * Walk-in cooler door electrical 115/1/60, 1.0 amp
- * 30" x 76" Left hinged flush door
- * Total shipping weight: 904 lb (1 pallets)

Refrigeration:

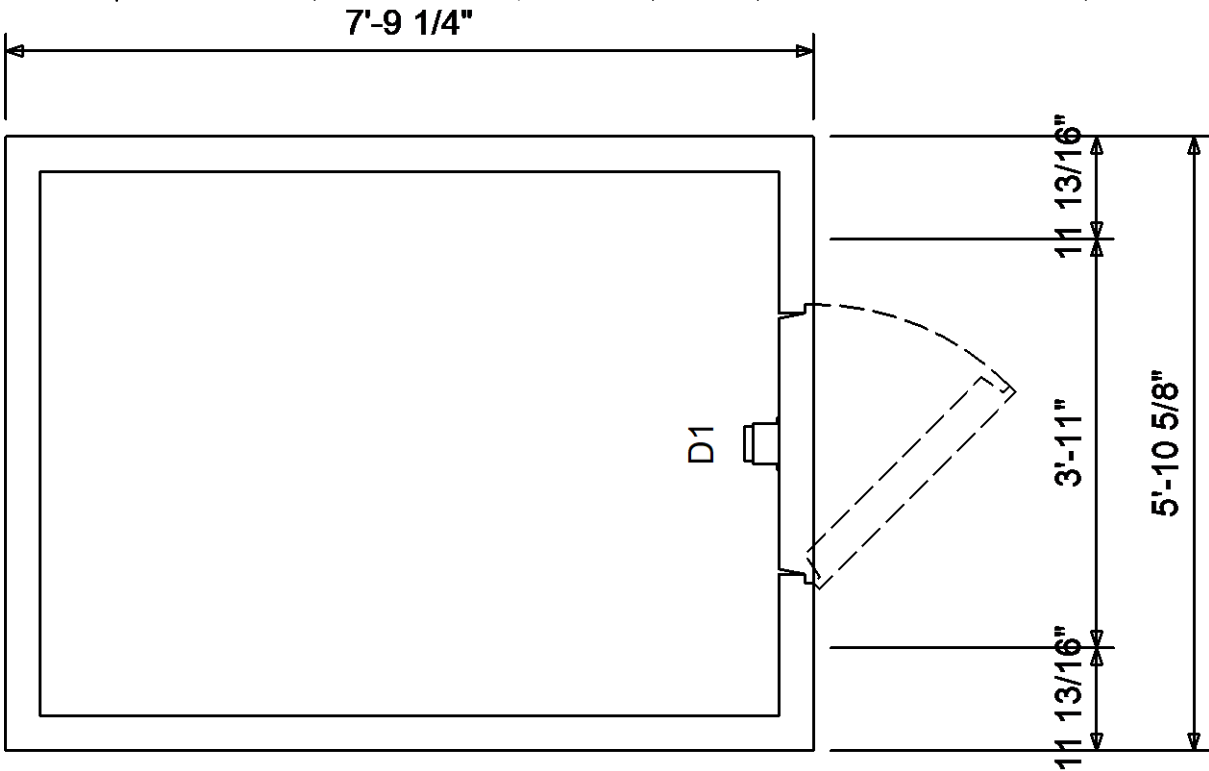
By others

Notes:

- * Refrigeration is sized based on holding use, no product load was considered. For product load consult factory

Customer Approval:

Quick Ship Outdoor Walk-In, 6' W x 8' L x 7'-2 1/4" H Cooler, No Floor, Door Centered on Width Side, LHH Door



Quote #: Revision:

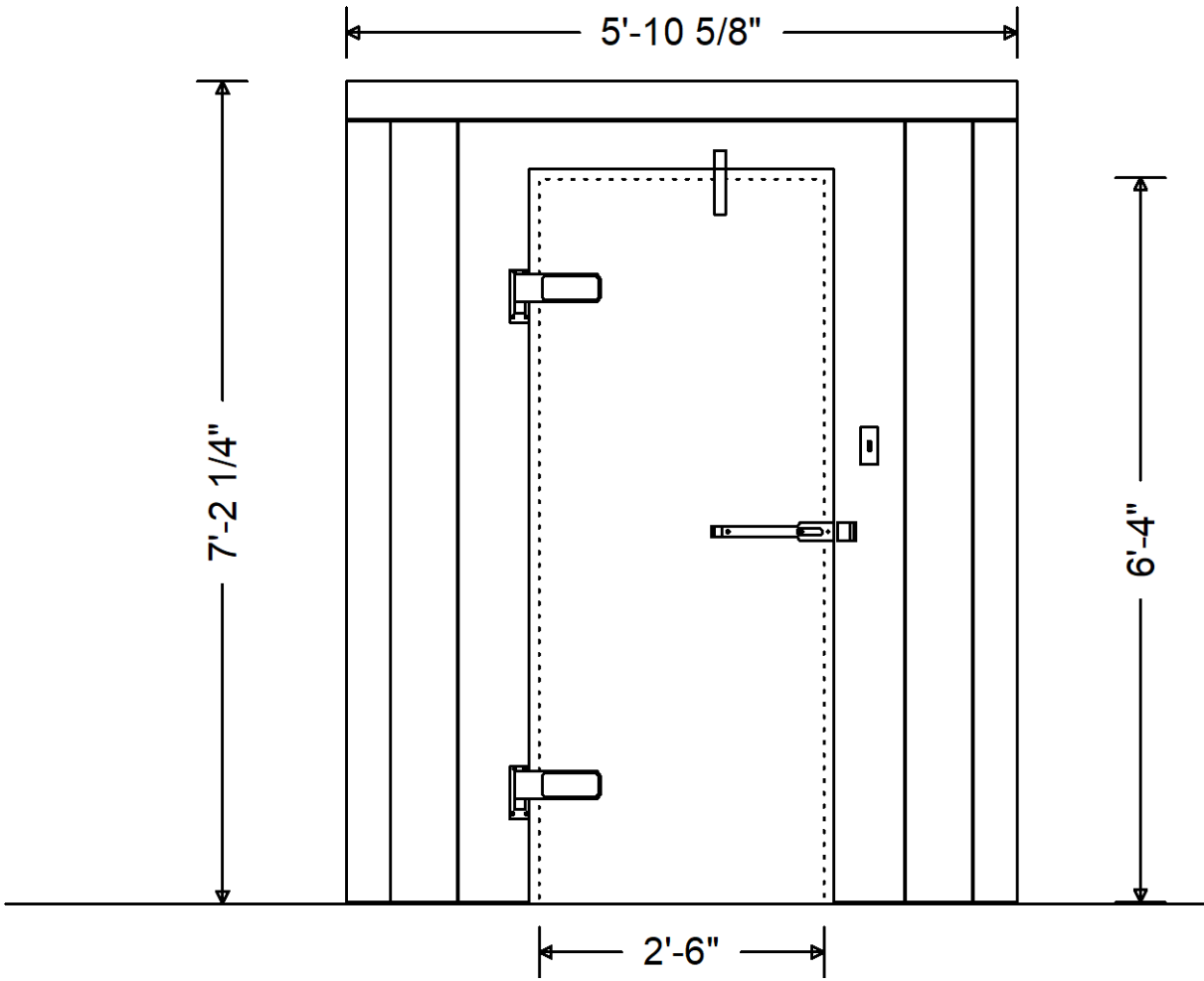
Project: 6 x 8 x 7'-2-1/4 Outdoor Cooler No Floor (Width Side)

Date: 09/15/2020

Page 1 of 3

-SPECIFICATION-Continued

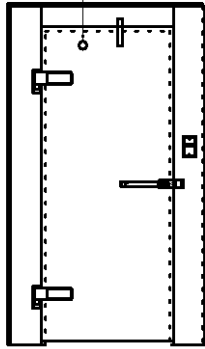
- * Allow a minimum of 2" clearance around all sides of the walk-in for proper air circulation
- * Floor must be level for proper walk-in installation
- * Walk-in shipment lead time is subject to terms and conditions
- * Specifications subject to change without notice



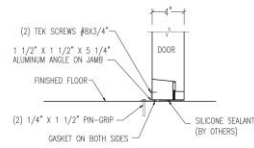
Customer Approval:

Quote #: Revision:	Project: 6 x 8 x 7'2-1/4 Outdoor Cooler No Floor (Width Side)	Date: 09/15/2020	
	Page 2 of 3		

See customer label note

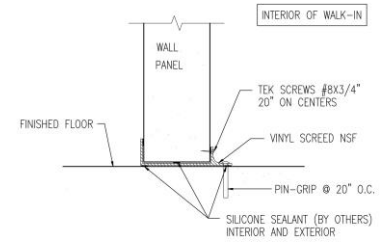


D1



FLUSH DOOR JAMB ALUMINUM ANGLE

20018: INTERIOR FLUSH DOOR JAMB ALUMINUM ANGLE: 1 1/2" X 1 1/2" X 5 1/4" TO SECURE TO CONCRETE FLOOR QUANTITY 2 REQUIRED



VINYL CREED WALL PANEL

8823: NSF VINYL FLOOR SCREED 72"

Quote #: Revision:	Project: 6 x 8 x 7'2-1/4 Outdoor Cooler No Floor (Width Side)	Date: 09/15/2020	
	Page 3 of 3		