



#457LWVAC12

12" Light Weight

Upright Bagged Vacuum Cleaner

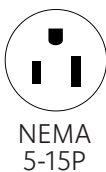


Table of Contents

| | |
|--|---|
| Critical Takeaways | 2 |
| Hazard Statements: Important Safety Instructions | 3 |
| Initial Setup | 5 |
| Parts List | 5 |
| Assembly Instructions | 6 |
| Operation Instructions | 6 |
| Cleaning Instructions | 7 |
| Maintenance | 8 |
| Troubleshooting | 9 |

Critical Takeaways

- Check for and remove excessive lint, string, or hair from the revolving brush at least once a month.
- This equipment has parts (belt and brush roller) that wear down over time. Check these parts monthly and replace as needed.



Hazard Statements: Important Safety Instructions

WARNING! It is required that all hazard statements are read before interacting with the equipment.

General Safety

- **Read the Manual:** Thoroughly read and understand the manual before setting up, operating, or cleaning the equipment.
- **Instruction and Training:** Instruct and train users in safe and correct equipment operation and use to prevent accidents and achieve consistent results.
- **No Modifications:** Never modify the equipment's settings, components, or features, or use such components or features in unintended ways outside of the manufacturer's specifications, as this may compromise safety and void warranties.
- **Do Not Operate Unattended:** Never operate the equipment unattended to ensure safety and prevent accidents.
- **Wear Proper Apparel:** Always wear appropriate clothing. Do not wear loose-fitting or hanging garments while operating the equipment to avoid potential hazards.
- **Indoor Use Only:** Use the equipment indoors only. Do not use it outdoors to maintain safety and proper functionality.

Electrical Safety

- **Dedicated Circuit:** For optimal performance and safety, the equipment must be connected to a dedicated electrical circuit. Sharing a circuit with other appliances can lead to power fluctuations, potential tripping of the circuit breaker, and a reduced lifespan of the equipment.
- **Proper Voltage:** Plug the equipment into a grounded outlet with the correct voltage to prevent electrical hazards. The plug that comes pre-attached cannot be replaced without professional installation. Never operate the equipment using an extension cord.
- **Grounding:** Ensure that the equipment is properly grounded to prevent electric shock.
- **Cord Safety:** To protect against electric shock, do not immerse cords, plugs, or the equipment in water or other liquids, and keep cords away from wet areas. Do not let cords hang over counters to prevent tripping hazards. Replace cords only with the manufacturer's cord set.

Operational Safety

- **Overheat Control:** Monitor the equipment to prevent overheating, especially during extended use.
- **Ventilation:** Ensure the equipment has adequate ventilation to prevent overheating and ensure efficient operation.
- **Child Safety:** Keep children away from the equipment and its controls to prevent accidents and misuse.
- **Flammable or Combustible Material:** Never use this equipment to vacuum up flammable or combustible liquids. Do not use in areas where these items could be present.
- **Dust Bag:** Dust bag usage is required for proper usage. Using without a dust bag is prohibited.
- **Blockage:** If a blockage has occurred, do not use.
- **General Safety:** Do not allow any bodily parts near the moving components of this equipment. This can include hair and loose clothing.

Maintenance and Cleaning

- **Cleaning and Maintenance:** Regularly clean and maintain the equipment according to the "Cleaning & Maintenance" section to ensure safe and hygienic operation.
- **Chemical Usage:** If using cleaning chemicals, follow the chemical manufacturer's guidelines for safe handling and storage.
- **Regular Inspection:** Regularly inspect the equipment for signs of wear, damage, or malfunction, and address any issues promptly.
- **Maintenance Schedule:** Adhere to the recommended maintenance schedule in the "Cleaning & Maintenance" section to ensure the equipment's longevity and safety.
- **Unplug and Cool Before Cleaning:** Unplug the equipment, turn it off, and let it cool completely before cleaning, inspecting, or moving it to ensure safety.

Emergency and Labeling

- **Emergency Procedures:** Know how to turn off the equipment quickly in case of emergencies or accidents.
- **Instruction Labels:** Ensure any operational or safety labels on the equipment are visible and legible. Do not remove any operational or safety labels.

For commercial use only.

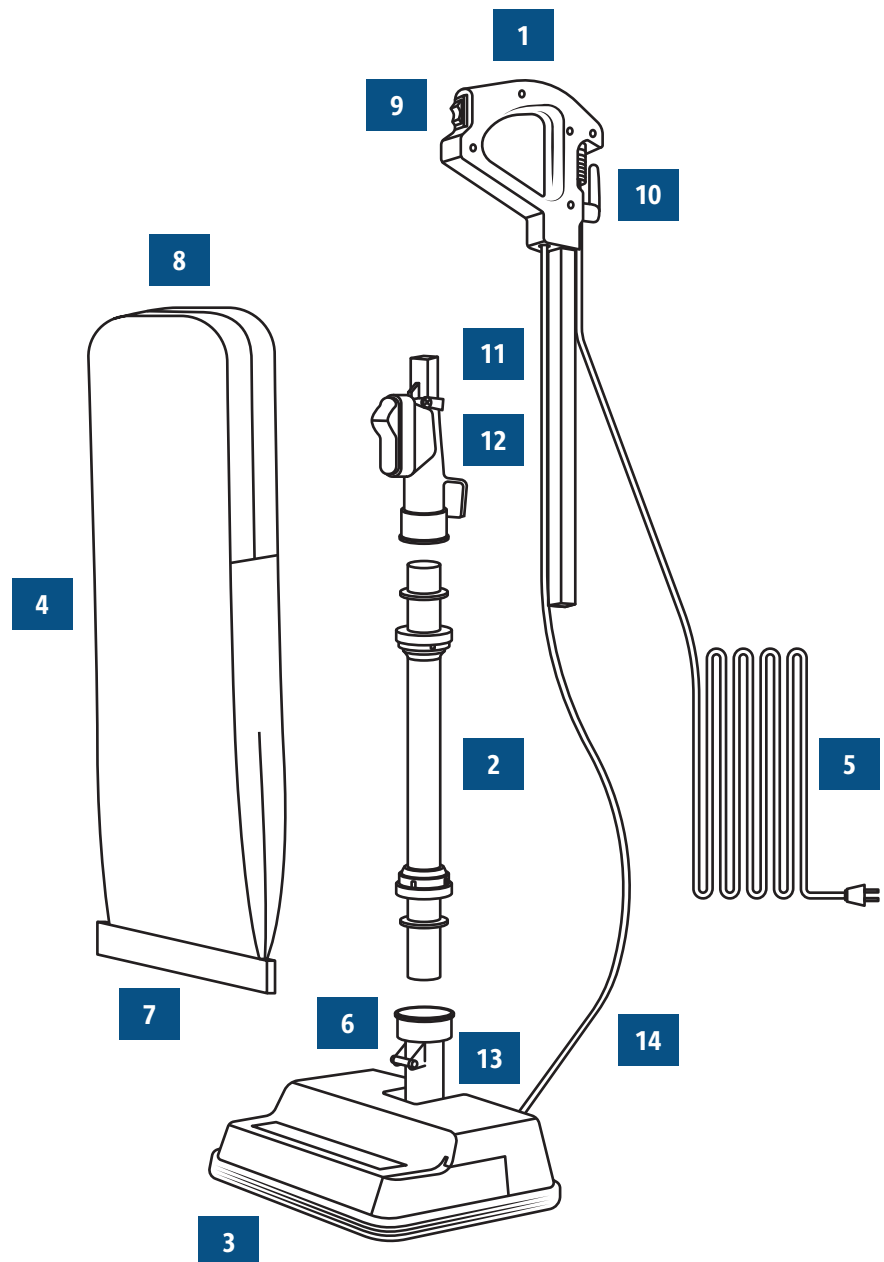
It is required that these instructions are saved for future reference.

Initial Setup

- **Inspect the Packaging:** Examine the equipment packaging for any signs of damage that may have occurred during shipping.
- **Unboxing:** Open the packaging with care. Use scissors or a box cutter to cut open the box, ensuring you do not damage the equipment or its components.
- **Remove All Components:** Ensure all components, including the belt and roller, are properly attached to the unit. Have the dust bag properly mounted to the vacuum.

Parts List

| # | Description |
|----|------------------------------|
| 1 | Handle Assembly |
| 2 | Vacuum Tube |
| 3 | Brush Roll |
| 4 | Outer Bag |
| 5 | Extension Cord |
| 6 | Outer Bag Hook |
| 7 | Outer Bag Clip |
| 8 | Paper Filter Bag |
| 9 | ON/OFF Switch |
| 10 | Extension Cord Hook (Top) |
| 11 | Handle Assembly Connector |
| 12 | Extension Cord Hook (Bottom) |
| 13 | Base Tray Tube |
| 14 | Power Cord |



Assembly Instructions

1. Ensure all items are in the box before beginning installation.
2. Install the vacuum tube to the base tray using the rubber O-rings to fasten the connectors.
3. Rotate the connectors clockwise until tight.
4. Attach the upper handle to the vacuum tube with the two screws, ensuring the ON/OFF switch faces the front.
5. Attach the outer bag to the connector/opening on the vacuum tube.
6. Affix the clip at the bottom of the outer bag to the stop on the base tray.
7. Attach the paper filter bag inside the outer bag following the instructions in the "Replacing the Paper Filter Bag" section.

Operation Instructions

1. **Disposable Paper Filter Dust Bag:**
 - Ensure the disposable paper filter dust bag is in place. DO NOT operate the vacuum without it.
2. **Powering the Equipment:**
 - Plug in the power cord and press the ON/OFF switch at the top of the handle.

Operational Tips

- **Test:** Test on new surfaces in an inconspicuous place to avoid damage.
- **Inserting a New Dust Bag:** Puff out and open the new disposable paper filter dust bag before inserting.
- **Replacing a Full Dust Bag:** Replace the filter dust bag when it is full.
- **Handling Issues:** Stop operation and service the equipment if it doesn't pick up properly or makes unusual noises.
- **Pre-Vacuum Recommendations:** Remove small objects like pins and paper clips from the floor before vacuuming to prevent motor damage.
- **Avoiding Damp Surfaces:** Do not use the vacuum on damp or wet surfaces to avoid damage and ensure user safety. Damage from such use is not covered under warranty.

Cleaning Instructions

Replacing the Paper Filter Bag

1. Unzip the outer bag to expose the paper filter bag.
2. Hook the bottom of the paper filter bag collar to the bottom of the connector opening.
3. Pull the paper filter bag upward to lock the bottom in place.
4. Snap the top of the paper filter bag collar over the top lip of the connector opening.
NOTE: Ensure the paper filter bag collar is completely over the connector to prevent dirt and debris from falling into the outer bag.

Replacing the Vacuum Belt

WARNING: Remove cord from outlet before servicing.

1. Locate the replacement belt on the undercarriage. Purchase additional belts at WebstaurantStore.com.
2. Remove the belt cover door screw with a Phillips head screwdriver.
3. Remove the worn belt from the pulley system.
4. Hook the new belt over the rear gear and then the front gear of the pulley system.
5. Reinstall the belt cover door, ensuring the screw is threaded correctly and fastened tightly.

Replacing the Brush Roll

WARNING: Remove cord from outlet before servicing.

1. Turn the machine upside down to reveal the undercarriage.
2. Remove the 5 screws affixing the undercarriage to the base tray and remove the cover.
3. Remove the belt from the rear gear assembly and the brush roll from the base tray.
4. Replace the old brush roll with the new one, ensuring the gear assembly faces the direction of the belt cover.
5. Re-hook the belt to the rear gear and reinstall the undercarriage with the 5 screws.

Maintenance

Regular Cleaning

Purpose: To prevent the buildup of dust, dirt, and debris, which can affect vacuum cleaner performance and longevity.

1. Turn off the vacuum cleaner and disconnect it from the power source.
2. Empty the dust bin or replace the vacuum bag if full.
3. Use a damp cloth to wipe down all exterior surfaces, including the handle, body, wheels, and attachments.
4. Pay attention to areas where dirt tends to accumulate, such as the intake vent and dust bin areas.
5. Dry all wiped areas with a clean towel to prevent moisture buildup.

Monthly Checks

Inspect for Wear: Purpose: Regularly check components for signs of wear, tear, or damage, and replace parts as necessary to ensure efficient cleaning performance.

1. Turn off and disconnect the vacuum cleaner from the power source.
2. Inspect for clogs, cracks, or wear.
3. Check the power cord for any fraying or damage.
4. Examine the brushes, belts, and wheels for wear that could affect cleaning efficiency.
5. If any issues are found, consult the "Troubleshooting" section or contact a service provider for repairs or part replacements.

Troubleshooting

| Problem | Possible Cause | Solution |
|--|--|--|
| Vacuum cleaner is not turning on. | Power cord is not properly plugged in. | Check that the power cord is securely plugged into the outlet. |
| | Circuit breaker has tripped or fuse is blown. | Reset the circuit breaker or replace the fuse. |
| | Power switch is faulty. | Contact a service provider to replace or repair the switch. |
| Loss of suction power. | Dust bin or vacuum bag is full. | Empty the dust bin or replace the vacuum bag. |
| | Clogged hose or filter. | Check for blockages in the hose or filter and clean as needed. |
| Strange noises or vibrations during operation. | Object stuck in the brush or hose. | Turn off and unplug the vacuum cleaner, then check for obstructions and remove them. |
| | Worn or damaged brushes. | Inspect the brushes and replace them if they are worn or damaged. |
| | Loose or broken internal components. | Contact a service provider for a detailed inspection and repair. |
| | Motor is malfunctioning. | Turn off the vacuum cleaner and allow it to cool down. If the problem persists, contact a technician for motor inspection. |
| Brush roller is not spinning. | Vacuum belt is broken or slipping. | Inspect and replace the vacuum belt if necessary. |
| | Hair or debris is tangled around the brush roller. | Remove the brush roller and clean off any tangled debris. |
| | Brush motor is faulty (if applicable). | Contact a technician to repair or replace the brush motor. |