

Spare Parts

All of the removable parts on the *Shortening Shuttle*® are available from us. When you need replacement parts call us and order genuine *Shortening Shuttle*® parts.

Spare Part #s By Model

<u>Description</u>	<u>SS-611</u>	<u>SS-611-T</u>	<u>SS-611-TL</u>	<u>SS-709 & (-T)</u>
Single Wheel Kit	SS-SWK	SS-SWK	SS-SWK	SS-SWK
Double Wheel Kit	SS-DWK	SS-DWK	SS-DWK	SS-DWK
Wheel Handle Kit	SS611WHK	SS611WHK	SS611WHK	SS709WHK
Wheel Handle Brkts	SS611WHB	SS611-TWHB	SS611-TLWHB	SS709WHB
Top Handle Kit	SS611THK	SS611THK	SS611THK	SS709THK
Baffle Screen Assm.	SS611BSA	SS611BSA	SS611-TLBSA	SS709BSA
Safety Labels Kit	SS-HOT-LB	SS-HOT-LB	SS-HOT-LB	SS-HOT-LB

Shuttle Accessories

Dumpster Extension	SS-611-DX	SS-611-DX	SS-611-DX	SS-709-DX
Splash Guard	SS-611-SG	SS-611-SG	SS-611-SG	SS-709-SPG
Shuttle Cover	SS-611-COV	SS-611-COV	SS-611-COV	SS-709-COV
Drop-In Shuttle Filter	SS-SF-100	SS-SF-100	SS-SF-100	SS-SF-100
Shuttle Funnel	SS-FUN-100	SS-FUN-100	SS-FUN-100	N/A



Fryer Drain Hose

FDH-075NPT

Fryer Drain Hose

FDH-100NPT

Fryer Drain Hose

FDH-125NPT

Drain Pipe

WIP-DPIP-125NPT

Safety Gloves, heat resistant

914-207



Proudly Made in the USA in Leominster Ma 01453

800-533-5711 (508)-757-5161

www.Shortening-Shuttle.com email: sales@Shortening-Shuttle.com

Specifications subject to change without notice.

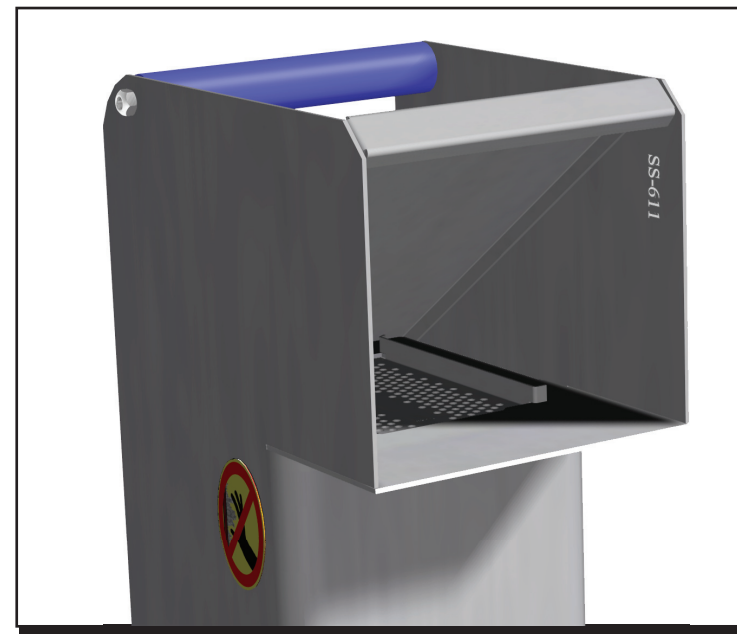
© Copyright March 2023

The *Shortening Shuttle*®

Top Handle Kit (part # SS-611-THK & SS-709-THK)

for all series SS-611 & series SS-709 Shortening Shuttles®

Installation



CAUTION: Read these instructions carefully before using to insure safe operation.

Shortening Shuttle® Top Handle Kits

Parts List for series SS-611:

1 pc	WH125750, 7.8" Medium Handle
1 pc	8.5" Carriage Bolt
2 pcs	Retainer Cap2
1 pc	3/8" Flange Nut

Parts List for series SS-709:

1 pc	WH125565, 11.3" Long Handle
1 pc	12" Carriage Bolt
2 pcs	Retainer Cap2
1 pc	3/8" Flange Nut

Installation

The Top Handle is a very important part of the **Shortening Shuttle®**. It prevents excessive heat transfer from the Shuttle Body to the operator and must be installed for safe operation of the **Shortening Shuttle®**.

Install the Top Handle as shown in *figure 1* by positioning the Top Handle in place (please be careful that the end washers stay in place) and then sliding the carriage bolt through the square hole in the Shuttle, through the Handle & end washers and then through the other square hole in the Shuttle. Install the Lock nut and firmly tighten the Lock Nut.

Installation is now complete. There is a spare parts list on the back page of this pamphlet so that you may keep your **Shortening Shuttle®** in proper working order.

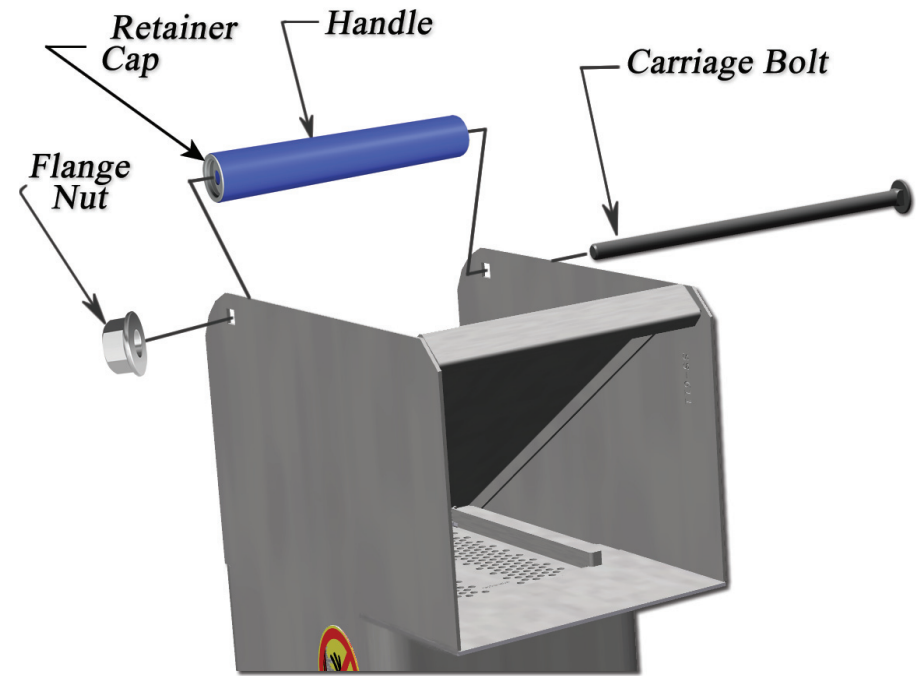


figure 1

CAUTIONS

Never use the **Shortening Shuttle®** without the baffle screen in place. The baffle screen prevents hot shortening from splashing out of the **Shortening Shuttle®** due to excessive jostling and/or the accidental dropping of the unit while containing liquids.

Never pour any caustic cleaning solutions inside or on the outside of the **Shortening Shuttle®**. This action can cause damage to the unit's structural integrity.

Always use appropriate Safety Apparel when operating the **Shortening Shuttle®**