

#274AFS9ELC

17" 9 Gallon Walk-Behind Auto Floor Scrubber



Table of Contents

General Safety Rules	3
Specific Safety Rules	4
Technical Specifications	5
Installation Instructions	6
Operation & Maintenance	7
Safety Information	10
Electrical Ground Instructions	10
Component Structure.....	11
Wiring Diagram	12
Brush Assembly Diagram.....	13

General Safety Rules

WARNING: Read all safety warnings and instructions prior to use.

Failure to follow all warnings and instructions may result in electric shock, fire, and/or serious injury.

SAVE ALL WARNINGS AND INSTRUCTIONS FOR FUTURE REFERENCE.

The term "floor scrubber" in the warnings refers to your corded floor scrubber.

1. WORK AREA SAFETY

- a. Keep work area clean and well lit during operation.
- b. Do not operate floor scrubber in explosive atmospheres, such as in the presence of flammable liquids, gases, or dust.
- c. Keep children and bystanders away while operating a floor scrubber to avoid potential injury.

2. ELECTRICAL SAFETY

- a. Floor scrubber plugs must match the outlet. Never modify the plug in any way. Do not use any adapter plugs with grounded floor scrubbers. Using unmodified plugs and matching outlets will reduce risk of electric shock.
- b. Avoid body contact with grounded surfaces, such as pipes, radiators, ranges, and refrigerators.
- c. Do not expose floor scrubbers to rain or wet conditions. Water entering the floor scrubber will increase the risk of electric shock.
- d. Do not abuse the cord. Never use the cord for carrying, pulling, or unplugging the floor scrubber. Keep cord away from heat, oil, sharp edges, or moving parts. Damaged or entangled cords increase the risk of electric shock. Never operate this unit with a damaged cord.
- e. When operating a floor scrubber outdoors, use an extension cord suitable for outdoor use. Use of a cord suitable for outdoor use reduces the risk of electric shock.
- f. If operating a floor scrubber in a damp location is unavoidable, use a residual current device (RCD) protected supply. Use of an RCD reduces the risk of electric shock.

3. PERSONAL SAFETY

- a. Stay alert, watch what you are doing, and use common sense when operating a floor scrubber. Do not use a floor scrubber while you are tired or under the influence of drugs, alcohol, or medication.
- b. Always use appropriate personal protective equipment. Always wear eye protection. Protective equipment such as a dust mask, non-skid safety shoes, hard hat, or hearing protection used for appropriate conditions can reduce personal injuries.
- c. Ensure the switch is in the off-position before connecting to power source, picking up, or carrying the tool. Carrying floor scrubbers with your finger on the power switch may cause accidents.
- d. Make sure that you are balanced and stable before operation. Keep proper footing and balance at all times. This enables better control of the floor scrubber in unexpected situations.
- e. Dress properly. Do not wear loose clothing or jewelry. Keep your hair, clothing, and gloves away from moving parts. Loose clothes, jewelry, or long hair can be caught in moving parts.
- f. Always stay alert during machine operation. A lack of awareness while in use can cause severe injury.

4. FLOOR SCRUBBER USE AND CARE

- a. Use the correct floor scrubber for your application. The correct floor scrubber will do the job better and safer at the rate for which it was designed.
- b. Do not use the floor scrubber if the switch does not turn it on and off. Any floor scrubber that cannot be controlled with the switch is dangerous and must be repaired.
- c. Disconnect your floor scrubber from the power source before making any adjustments, changing accessories, or storing the unit. Such preventive safety measures reduce the risk of starting the floor scrubber accidentally.
- d. Store idle floor scrubbers out of the reach of children and do not allow persons unfamiliar with the floor scrubber or these instructions to operate the floor scrubber.
- e. Maintain floor scrubbers and accessories. Check for misalignment or binding of moving parts, breakage of parts, and any other condition that may affect the floor scrubber's operation. If damaged, have the floor scrubber repaired before use. Accidents may be caused by poorly maintained floor scrubbers.
- f. Only use the floor scrubber and accessories in accordance with these instructions. Always take into account the working conditions and the work to be performed. Use of the floor scrubber for unintended functions could result in hazardous situations.
- g. Keep handles and grasping surfaces dry, clean, and free from oil and grease. Slippery handles and grasping surfaces do not allow for safe handling and control of the tool in unexpected situations.

5. SERVICE

- a. Have your floor scrubber serviced by a qualified repair person using only identical replacement parts. This will ensure that the safety of the floor scrubber is maintained.
- b. If the replacement of the power cord is necessary, this has to be done by the manufacturer or a designated service organization.

Specific Safety Rules

- For your safety, do not plug in your floor scrubber or try to use it until it is completely assembled according to these instructions, and until you have completely read and understood this user manual.
- Always keep hands out of the path of floor scrubber. Avoid awkward hand positions where a sudden slip could cause your hand to move into the floor scrubber.
- Make sure there are no nails or foreign objects in the area that is being cleaned.
- Protect your eyes. Always wear safety goggles while machine is in use to avoid potential eye damage.
- Everyday glasses only have impact resistant lenses and ARE NOT safety glasses. For your own protection, make sure your safety glasses or goggles comply with the ANSI Z87.1 Safety Standard.
- Never use this floor machine without the provided GFCI.
- Always verify that the GFCI is working correctly before starting work.
- Replacement of the plug or the power cord shall always be carried out by the manufacturer or a designated service organization.
- Keep liquid clear of the parts of the machine and away from persons in the working area.

Technical Specifications

Description	Unit	Data
Protection Level	IPX	3
Operating Voltage	VAC	110
Power Frequency	VAC	210–230
Vacuum Motor	W	550
Suction Vacuum	mmH ₂ O	2200
Brush Motor	W	600
Brush Speed	rpm	180
Noise Level	dB	≤75
Solution Tank Capacity	Gallon	8
Recovery Tank Capacity	Gallon	9
Maximum Solution Supply	Gal / min	.68
Squeegee Width	inch	29.5
Theoretical Working Capacity	sq. ft. / hr	1900
Brush Diameter	inch	17
Cleaning Width	inch	17
Brush Pressure	kg.f	≥20
Maximum Gradient	%	2
Minimum Turning Radius	inch	29.5
Machine Dimension (Without Squeegee)	inch	49 x 19.7 x 39.8

*Protection Type: Overload current protection, short circuit, power-down protection, reversed polarity protection

Installation Instructions

ASSEMBLING THE SQUEEGEE

- Turn star knobs counterclockwise to loosen from squeegee assembly.
- Insert squeegee assembly blots through squeegee lifting plate slots.
- Tighten star knobs clockwise to fasten assembly.

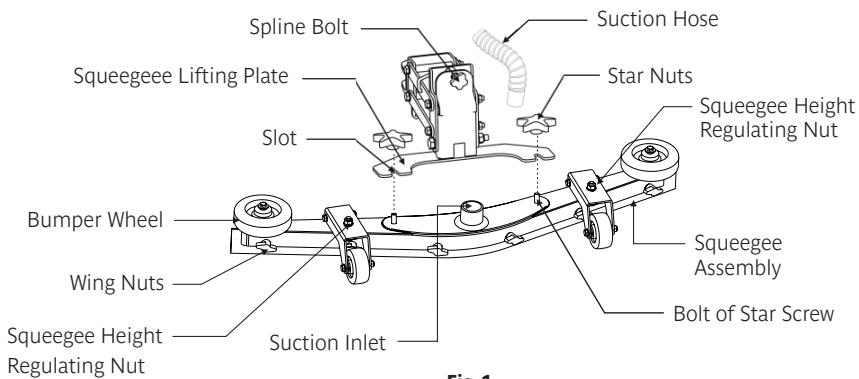


Fig. 1

ASSEMBLING THE BRUSH / PAD DRIVER

- Push down on scrubber handle to lift the front of the scrubber.
- Position brush directly under the clutch plate.
- Rotate brush / pad driver 30 degrees to the left to attach.
- To remove brush / pad driver, rotate 30 degrees to the right.

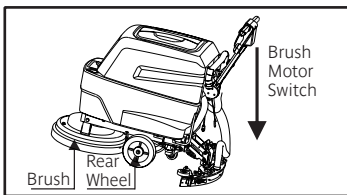


Fig. 2

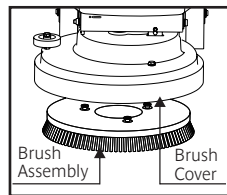


Fig. 3

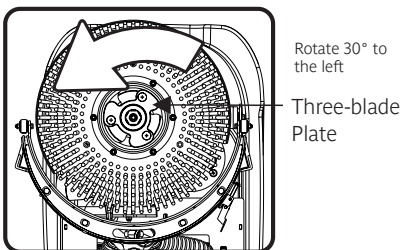


Fig. 4

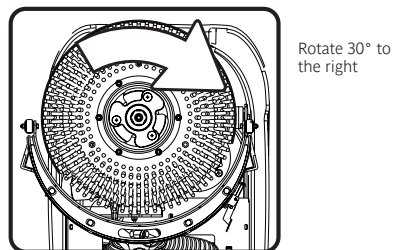


Fig. 5

Operation & Maintenance

WARNING: Be sure to read and understand this manual in its entirety before operation. Failure to do so may result in damage or injury.

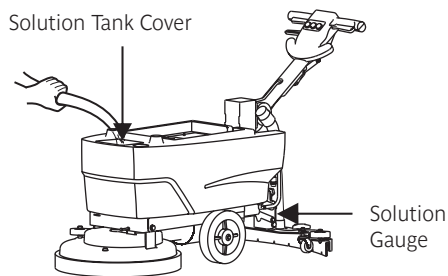
PROPER SETUP AND PREPARATION

Ensure that all components are assembled tightly and secured, and that power source matches voltage of your unit.

WARNING: Do not operate this unit near flammable or combustible objects.

For Scrubbing or Polishing:

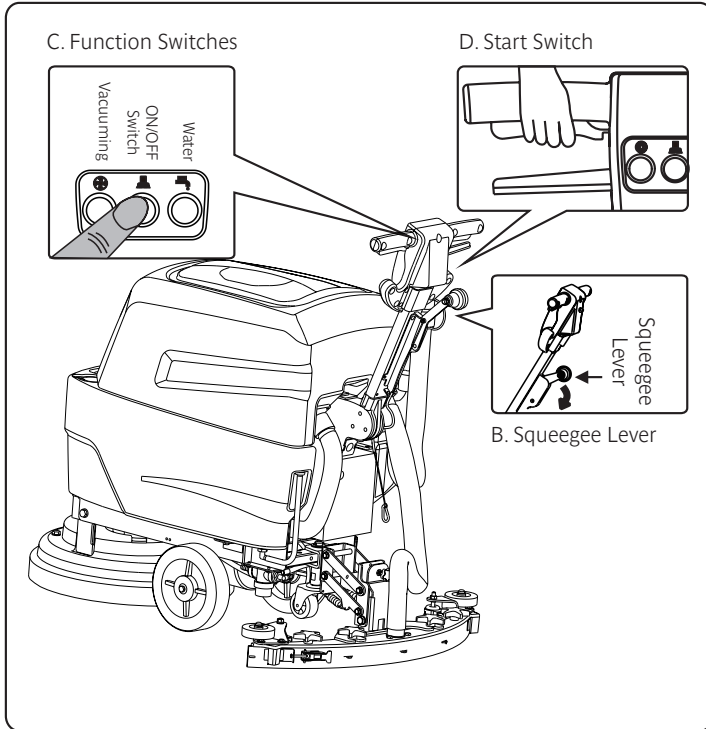
PREPARATION



- Check that the brush / pad driver is properly attached to the scrubber.
- Confirm that the squeegee assembly is properly attached and moving freely with the scrubber.

OPERATION

- Plug scrubber into properly specified wall outlet.
- Insert machine key and turn.
- Press the power button on the scrubber.
- Press the water button to activate the dispensing pump.
- Press the vacuum switch to activate the vacuum.
- Push squeegee lever down till squeegee is contacting the floor.
- Hold both brush motor switches in the handle to activate the motor.
- Walk slowly when cleaning and pay attention to potential obstacles.
- Always keep power cord behind the machine and do not run over it.



- When complete, lift up the squeegee lever.
- Turn off water.
- Turn off vacuum.
- Turn off machine power.

TO EMPTY WASTE WATER TANK

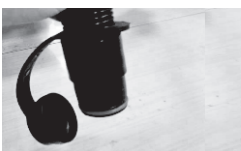
- Remove discharge hose from scrubber frame.
- Lay hose on appropriate floor drain or sink basin.
- Open Hose.



1. Take down



2. Bend the hose



4. Lay the hose horizontally



3. Open the hose

MAINTENANCE

To clean the recovery tank:

- Place discharge hose over floor drain or sink basin.
- Drain all soiled water.
- Use a hose to flush out recovery tank.
- Allow to air dry.
- Clean strainer.

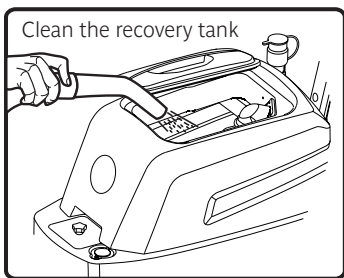


Fig. 12

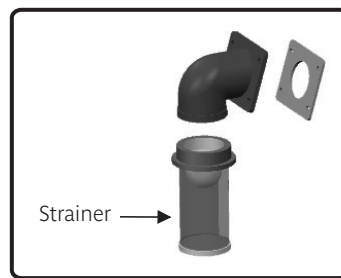
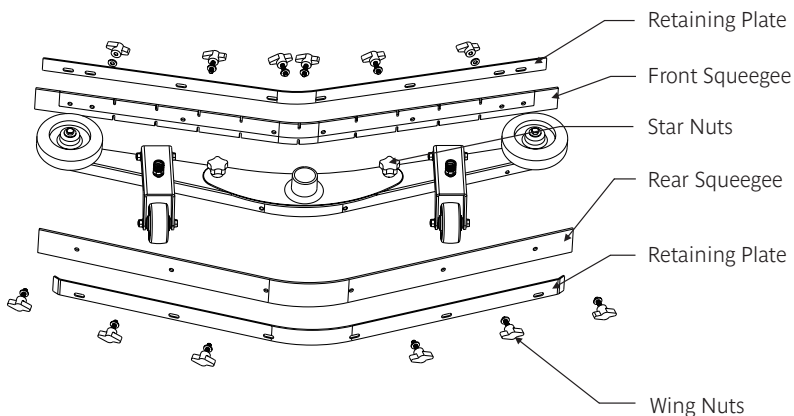


Fig. 13

- Remove debris and any obstructions from cleaning surface before operation.
- Adjust handle to a comfortable position.
- Both hands should always be on the unit when in use.
- Fill solution tank with water or diluted detergent with a maximum temperature of 122°F.
- To extend scrubber life, use detergents with a neutral PH and low foam.

To replace or rotate squeegee:

- Turn star nuts counterclockwise to release squeegee assembly.
- Remove wing nuts to change or rotate squeegees.
- Re-tighten wing nuts and star nuts.



Safety Information

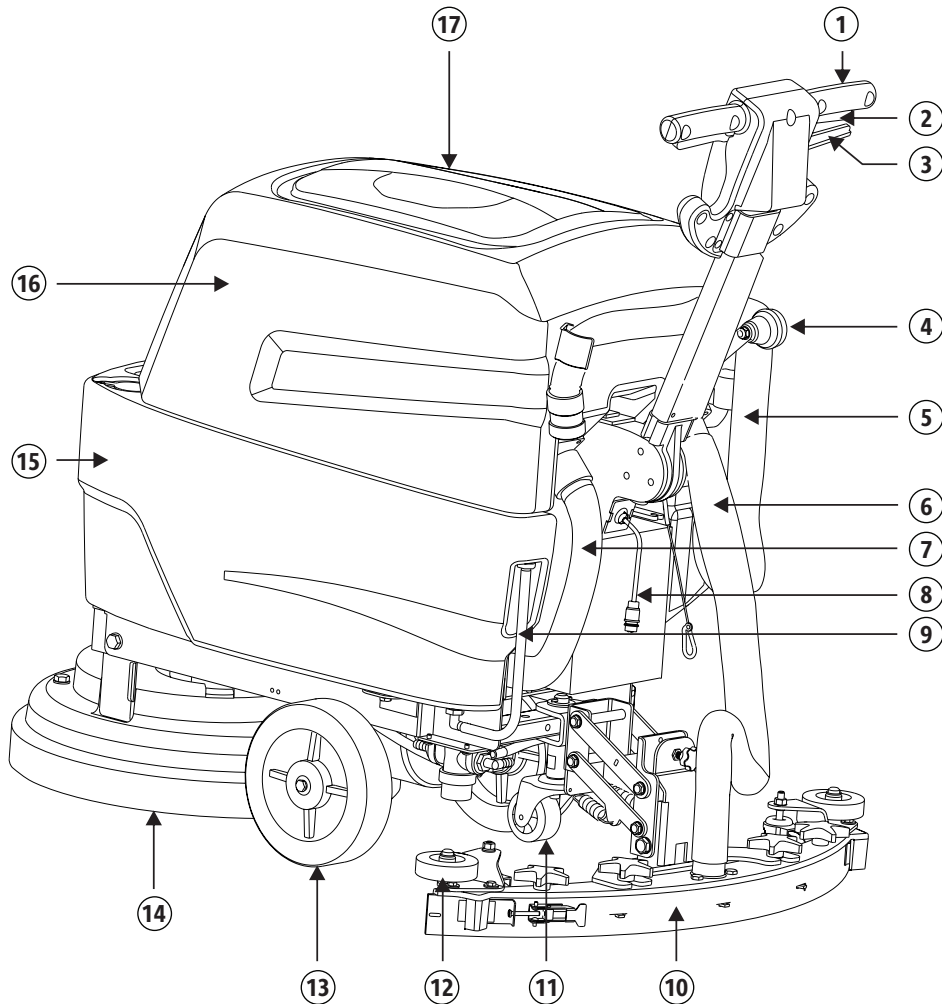
Failure to follow the instructions below could lead to damage or personal injury

1. This unit is for commercial janitorial use only, you must be trained before operating unit.
2. Do not operate unit unless it is completely assembled, and you have ensured that every component is secured tightly.
3. This unit is intended for use with 110–120V power sources only. Always use a 3-wire grounded power supply.
4. Ensure that the unit is unplugged and dry before performing maintenance or repairs. Never leave the unit plugged into a power source while unattended.
5. Ensure that the unit is kept dry at all times during operation. Store unit in a dry area, and only perform cleaning with a dry cloth.
6. Do not use unit near flammable objects, liquids, or vapors. Do not use flammable compounds to clean the unit.
7. Maintenance is to be performed by qualified professionals only.
8. Ensure that the unit's power cord is free of damage before each use. Do not run the machine over the power cord, and avoid abruptly pulling or tugging on the power cord while unit is in use.

Electrical Ground Instructions

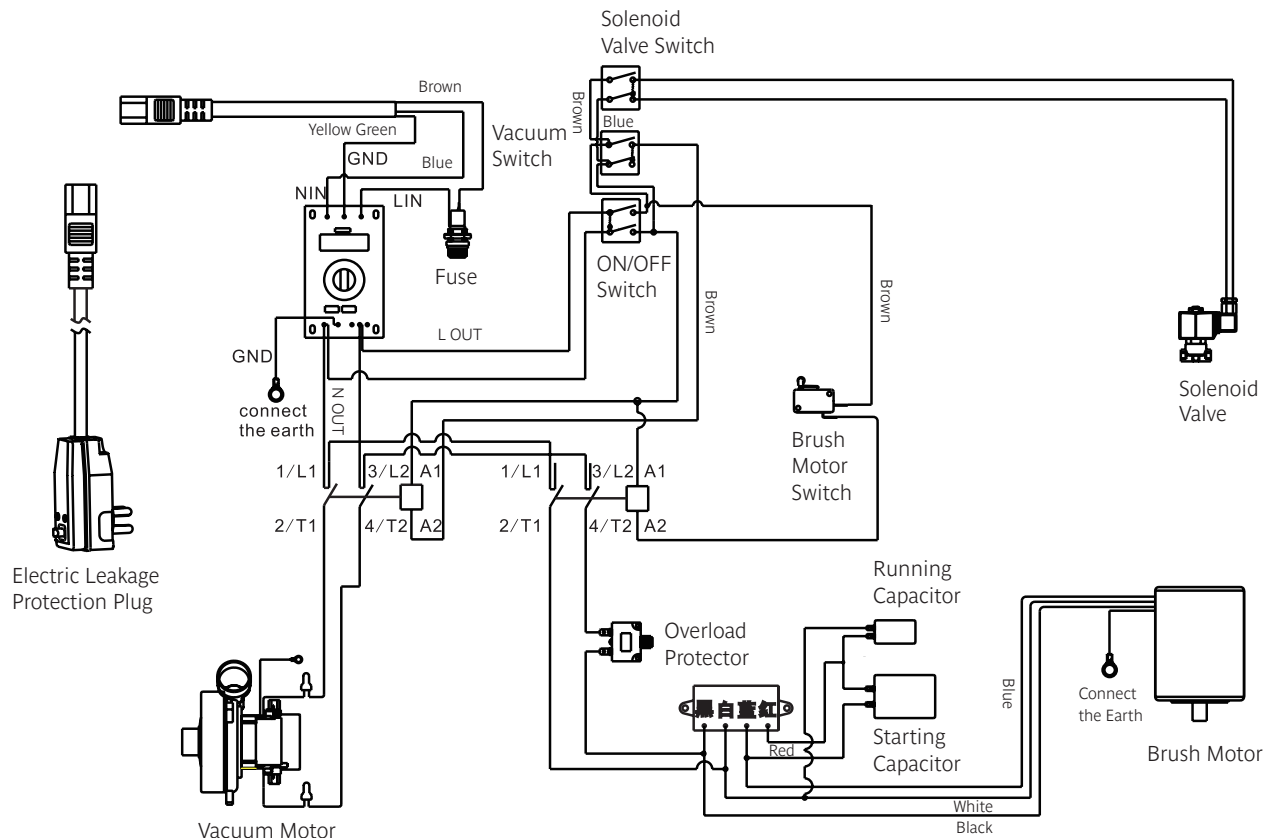
Ensure that this rotary floor scrubber is grounded while in use to protect the user from electric shock. The unit is equipped with a three-conductor cord and three-prong plug that is to be connected to a grounded electrical outlet. The green (or green and yellow) conductor in the power cord is the grounding wire – ensure that this wire is only plugged in to the grounding pin of the plug.

Component Structure



- | | | |
|----------------------------|---------------------|---------------------|
| ① Operation Handle | ⑦ Vacuum Hose | ⑬ Front Wheel |
| ② Star Switch | ⑧ Power Cable Head | ⑭ Brush |
| ③ Handle Adjustment Switch | ⑨ Solution Gauge | ⑮ Solution Tank |
| ④ Squeegee Lever | ⑩ Squeegee Assembly | ⑯ Recovery Tank |
| ⑤ Drain Hose | ⑪ Rear Wheel | ⑰ Recovery Tank Lid |
| ⑥ Suction Hose | ⑫ Bumper Wheel | |

Wiring Diagram



Brush Assembly Diagram

