



Instruction Manual

Standard Deluxe Pallet Truck

Part Number: 272136, 272142, 272148, 272736, 272742, 272748



Note: Operator MUST read and understand these operating instructions before using this Hand Pallet Truck.

ATTENTION: TO INSURE SAFE AND EASY USE OF YOUR WESCO PALLET TRUCK, READ THESE INSTRUCTIONS ENTIRELY BEFORE USING.

TABLE OF CONTENTS

| | | |
|-----|---|---|
| 1 | General Information | 2 |
| 1.1 | Description..... | 2 |
| 1.2 | Specifications..... | 2 |
| 2 | Handle Assembly..... | 3 |
| 3 | Operation..... | 4 |
| 3.1 | Lower..... | 4 |
| 3.2 | Lift..... | 4 |
| 4 | Maintenance..... | 4 |
| 4.1 | Daily Check..... | 4 |
| 4.2 | Lubrication..... | 4 |
| 5 | Safety Information..... | 4 |
| 6 | Trouble Shooting..... | 5 |
| 7 | Fork Frame & Handle Part Information..... | 6 |
| 7.1 | Fork Frame & Handle Parts Diagram..... | 6 |
| 7.2 | Fork Frame & Handle Parts List..... | 7 |
| 8 | Hydraulic System Part Information..... | 8 |
| 8.1 | Hydraulic Jack System Parts Diagram..... | 9 |
| 8.2 | Hydraulic Jack System Parts List..... | 9 |

1. GENERAL INFORMATION

1.1 DESCRIPTION

Thank you for purchasing a Wesco Standard Deluxe Pallet Truck. This pallet truck is designed for transporting and horizontal lifting. The pallet truck features a 5 year pump warranty, 6" wide forks and a rubber coated handle. It operates with 7" or 8" moldon polyurethane steering wheels and 3" moldon polyurethane load wheels.

1.2 SPECIFICATIONS

| Model | 272136 | 272142 | 272148 | 272736 | 272742 | 272748 |
|---------------------|-----------|-----------|-----------|-----------|-----------|-----------|
| Capacity | 5,500 lbs | 5,500 lbs | 5,500 lbs | 5,500 lbs | 5,500 lbs | 5,500 lbs |
| Weight | 143 lbs | 152 lbs | 157 lbs | 151 lbs | 161 lbs | 166 lbs |
| Fork Lowered Height | 3" | 3" | 3" | 3" | 3" | 3" |
| Fork Raised Height | 8" | 8" | 8" | 8" | 8" | 8" |
| Single Fork Width | 6" | 6" | 6" | 6" | 6" | 6" |
| Fork Length | 36" | 42" | 48" | 36" | 42" | 48" |
| Overall Width | 21" | 21" | 21" | 27" | 27" | 27" |
| Overall Length | 51" | 57" | 63" | 51" | 57" | 63" |
| Overall Height | 48" | 48" | 48" | 48" | 48" | 48" |

Materials and specifications are subject to change without notice.

Instruction Manual

ATTENTION: TO INSURE SAFE AND EASY USE OF YOUR WESCO PALLET TRUCK, READ THESE INSTRUCTIONS ENTIRELY BEFORE USING.

1.2 SPECIFICATIONS (CONTINUED)

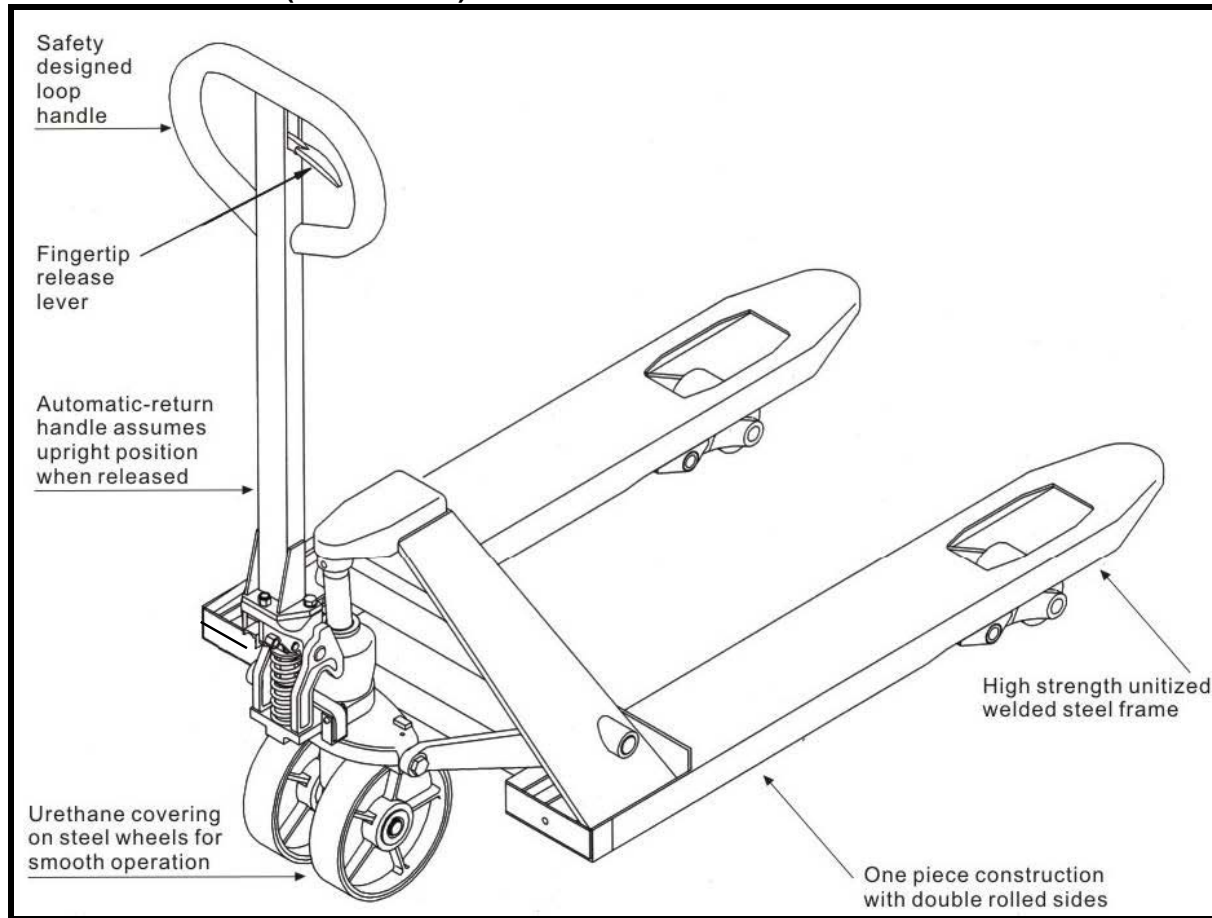


Figure 1

2. HANDLE ASSEMBLY

Items identified in Parts Diagrams

- 1) Use schematics and Figure 1 as a reference.
- 2) Position yourself behind the truck with forks pointing away.
- 3) Remove (3) screws [Item 22] from handle base [item 23].
- 4) Holding handle [item 68] in one hand, and a screwdriver in the other, place the screwdriver in one of the 3 screw holes in handle base [item 23]. Pull on the screw driver so that the handle base [item 23] tilts back until the center hole in the handle [item 23] and axle [item 21] are aligned.
- 5) Slip chain [item 72] through both holes.
- 6) Replace 3 each screws [item 22] attaching handle [item 68] to handle base [item 23].
- 7) Pull up on lowering arm [item 35] and slip chain and nut assembly [items 72, 73] into slot. Nut [item 73] should be resting against underside of lowering arm [item 35].

Instruction Manual

ATTENTION: TO INSURE SAFE AND EASY USE OF YOUR WESCO PALLET TRUCK, READ THESE INSTRUCTIONS ENTIRELY BEFORE USING.

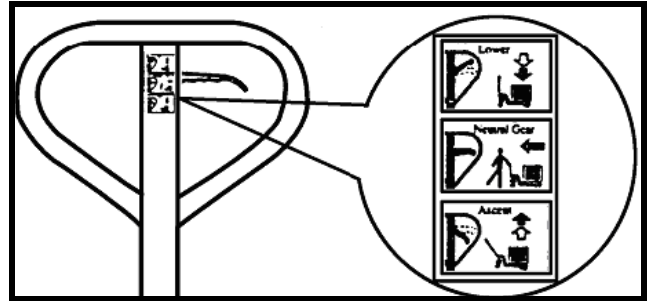
3. OPERATION

3.1 TO LOWER

Pull the release lever up, the truck will lower (detailed on right).

3.2 TO LIFT

Push the release lever down, you can now pump the truck up.



4. MAINTENANCE

4.1 DAILY CHECK AND MAINTENANCE

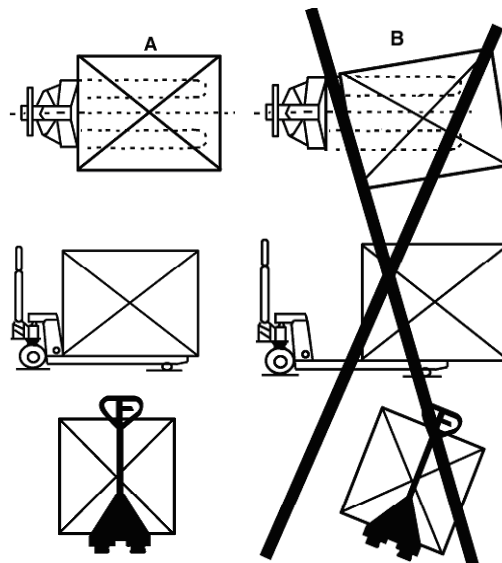
Check the pallet truck daily to limit wear as much as possible. Pay special attention to the wheels and the axles because thread, rags, etc. may block the wheels. The forks should be unloaded and set to the lowest position when not in use.

4.2 LUBRICATION

Lubricate the axles of wheels and all moving parts.

5. SAFETY INFORMATION

- 5.1** Operator should read all warning labels and instructions before using this truck.
- 5.2** Do not use on uneven surfaces.
- 5.3** Do not operate the pallet truck unless you are familiar with the unit and have been trained or authorized to do so.
- 5.4** Do not operate the pallet truck unless you have checked its condition. Check the wheels, the rollers, the draw-bar unit, the fork unit, the lever plate, etc.
- 5.6** Do not lift or transport people on the pallet truck.
- 5.7** Do not load goods like fig. 5/B. Center loads on the pallet truck.
- 5.8** Do not load the truck over the maximum capacity of the unit: 5,500 lbs.



Instruction Manual

ATTENTION: TO INSURE SAFE AND EASY USE OF YOUR WESCO PALLET TRUCK, READ THESE INSTRUCTIONS ENTIRELY BEFORE USING.

6. TROUBLE SHOOTING

| No | Problem | Causes | Solutions |
|----|--|---|---|
| 1 | Jack feels "spongy" when operating | - Air in the hydraulic system. - Insufficient hydraulic oil. | - Hold lever up, then pull the loop handle down and up for a few strokes. - Remove the oil plug [item 25] and add oil. |
| 2 | Forks do not rise when the valve handle is in lifting position | - Insufficient hydraulic oil. - The lowering arm assembly does not open - Leak from Valve Cone [item 16] Assembly | - Remove the oil plug [item 25] and add oil. - Adjust the valve chain with adjusting nut [item 73] or check the release piston [item 34]. - Replace steel ball [item 19] |
| 3 | Forks drop after every pump stroke | - Air in the hydraulic system - Leak from the valve Cone [item 16] | - Hold lever up, then pull the loop handle down and up for a few strokes. - Replace Valve Cone [item 16], valve housing [item 17], O-Ring [item 18] and O-Ring [item 13] |
| 4 | "Lowering action" does not function or lowers slowly | - Insufficient travel of lowering arm | - Adjust the valve chain and adjusting nut [item 73]. |
| 5 | Forks drop when the handle is in the neutral position | - The lowering arm does not open properly - Leak from the valve cone - Leak from the seal rings in the bottom plate | - Adjust the valve chain with adjusting nut [item 73] or check the release piston [item 34]. - Replace Valve Cone [item 16], valve housing [item 17], O-Ring [item 18] and O-Ring [item 13] - Replace Cup Packing [item 43] |
| 6 | Pumping still occurs when valve handle is in neutral position | | - Adjust the valve chain with adjusting nut [item 73] or check the release piston [item 34]. |
| 7 | Oil leaks from the lowering arm assembly | - Seal ring damage or worn out | - Replace O-ring [item 32] and [item 38]. |

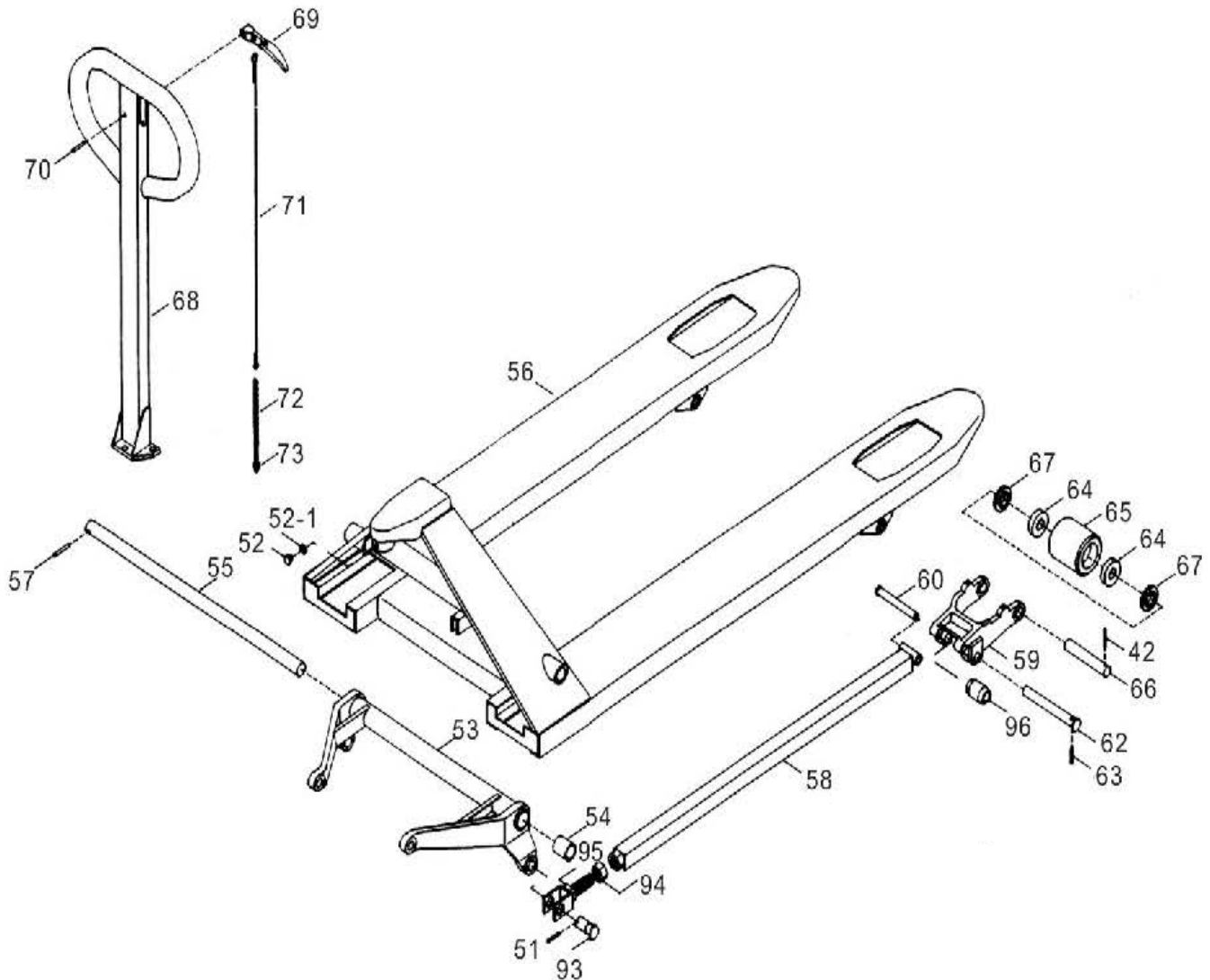
NOTE: DO NOT ATTEMPT TO REPAIR THE PALLET TRUCK UNLESS YOU ARE TRAINED AND AUTHORIZED TO DO SO.

Instruction Manual

ATTENTION: TO INSURE SAFE AND EASY USE OF YOUR WESCO PALLET TRUCK, READ THESE INSTRUCTIONS ENTIRELY BEFORE USING.

7. FORK FRAME & HANDLE PART INFORMATION

7.1 FORK FRAME & HANDLE PARTS DIAGRAM



ATTENTION: TO INSURE SAFE AND EASY USE OF YOUR WESCO PALLET TRUCK, READ THESE INSTRUCTIONS ENTIRELY BEFORE USING.

7. FORK FRAME & HANDLE PART INFORMATION

7.2 FORK FRAME & HANDLE PARTS LIST

| | Part Number | Item | Description | Qty. | Part Number | Item | Description | Qty. |
|--|-------------|------|-----------------------------------|------|---|------|----------------|------|
| | 270265 | 42 | Load Wheel Pin | 2 | 270273 | 64 | Ball Bearing | 4 |
| | 270138 | 51 | Spring Pin | | 270288 | 65 | Load Wheel | 2 |
| | 270581 | 52 | Screw | 1 | 270145 | 66 | Axle | 1 |
| For Units 272136, 272142, 272148 Only | 270256 | 53 | 21" Trunion (Old Style) | 1 | 270289 | 67 | Nylon Cover | 4 |
| | 270583 | | 21" Trunion (New Style) | 1 | 270819 | 68 | Coated Handle | 1 |
| For Units 272736, 272742, 272748 Only | 270257 | | 27" Trunion (Old Style) | 1 | Sold only in Kits (270141 and 270155) | 69 | Release Handle | 1 |
| | 270582 | | 27" Trunion (New Style) | 1 | 270157 | 70 | Spring Pin | 1 |
| | 270258 | 54 | Bushing | | Sold only in Kits (270141 and 270155) | 71 | Wire | 1 |
| For Units 272136, 272142, 272148 Only | 270574 | 55 | 21" Pivot Rod | 1 | Sold only in Kits (270141 and 270155) | 72 | Chain | 1 |
| | 270575 | | 27" Pivot Rod | 1 | 270148 | 73 | Nut | 1 |
| | 270272 | 57 | Spring Pin | 1 | 270833 | 93 | Pin | 1 |
| For Units 272136, 272736 Only | 270279 | 58 | 36" Connecting Rod (Old Style) | 2 | 270834 | 94 | Adjust Nut | 1 |
| | 270586 | | 36" Connecting Rod (New Style) | 2 | 270835 | 95 | Adjust Screw | 1 |
| | 270836 | | 36" Adjustable Tie Rod | | 270821 | 96 | Exit Roller | 1 |
| For Units 272142, 272742 Only | 270280 | | 42" Connecting Rod (Old Style) | 2 | 270141: Handle Kit | 68 | Coated Handle | 1 |
| | 270585 | | 42" Connecting Rod (New Style) | 2 | | 69 | Release Handle | 1 |
| | 270842 | | 42" Adjustable Tie Rod | | | 70 | Spring Pin | 1 |
| For Units 272148, 272748 Only | 270278 | | 48" Connecting Rod (Old Style) | 2 | | 71 | Release Rod | 1 |
| | 270584 | | 48" Connecting Rod (New Style) | 2 | | 72 | Chain | 1 |
| | 270848 | | 48" Adjustable Tie Rod | | | 73 | Nut | 1 |
| | 270263 | 59 | Load Wheel Yoke | 1 | | 69 | Release Handle | 1 |
| | 270264 | 60 | Pin | 1 | 270155: Handle Release Assembly | 71 | Release Rod | 1 |
| | 270144 | 62 | Axle | 1 | | 72 | Chain | 1 |
| | 270266 | 63 | Spring Pin | 1 | | 73 | Nut | 1 |

*Items within kits specify quantity included per kit

OPTIONAL PARTS LIST

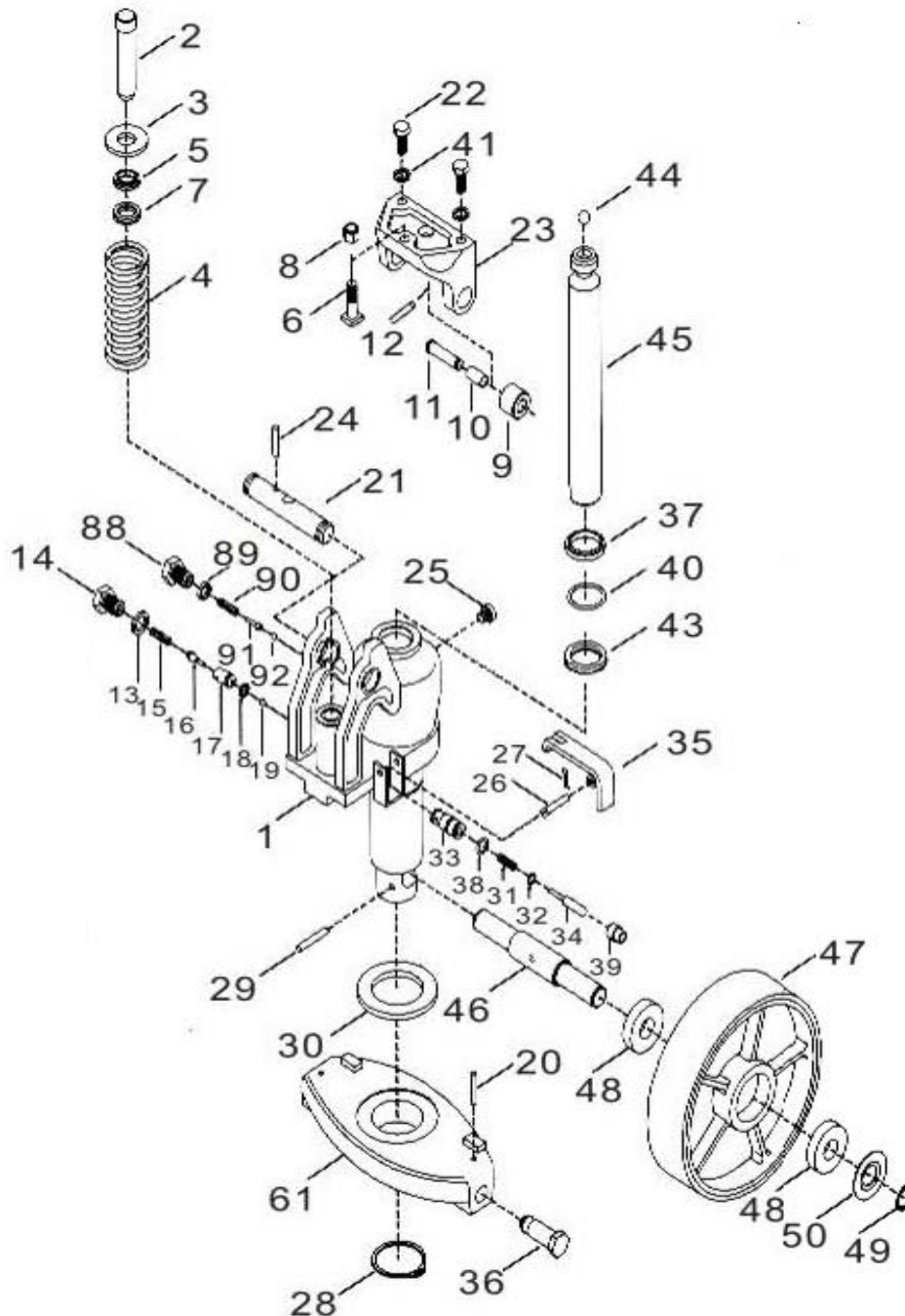
| Part Number | Description | Qty. |
|-------------|---------------------------------------|------|
| 270570 | Kit: Foot Brake Attachment (8" Wheel) | 1 |
| 270573 | Kit: Foot Brake Attachment (7" Wheel) | 1 |

Instruction Manual

ATTENTION: TO INSURE SAFE AND EASY USE OF YOUR WESCO PALLET TRUCK, READ THESE INSTRUCTIONS ENTIRELY BEFORE USING.

8. HYDRAULIC SYSTEM PART INFORMATION

8.1 HYDRAULIC SYSTEM PARTS DIAGRAM



Instruction Manual

ATTENTION: TO INSURE SAFE AND EASY USE OF YOUR WESCO PALLET TRUCK, READ THESE INSTRUCTIONS ENTIRELY BEFORE USING.

8. HYDRAULIC SYSTEM PART INFORMATION

8.2 HYDRAULIC SYSTEM PARTS LIST

| Part Number | Item | Description | Qty. | Part Number | Item | Description | Qty. |
|-------------------------|------|-----------------------------|------|---|-------|-------------------|------|
| 270150 | 1 | Pump Replacement | 1 | Sold Only in Seal Kit | 37 | Dust Seal | 1 |
| 270101 | 2 | Plunger Piston | 1 | 270268 | 38 | "O" Ring | 1 |
| 270578 | 3 | Cap Washer | 1 | 270267 | 39 | Rubber Boot | 1 |
| 270102 | 4 | Spring | 1 | Sold Only in Seal Kit | 40 | "O" Ring | 1 |
| Sold Only in Seal Kit | 5 | Dust Seal | 1 | Sold Only in 270115 Set | 41 | Washer | 12 |
| 270313 | 6 | Handle Base Bolt | 1 | Sold Only in Seal Kit | 43 | Cup Packing | 1 |
| Sold Only in Seal Kit | 7 | Cup Packing | 1 | 270132 | 44 | Ball | 1 |
| 270236 | 8 | Nut | 1 | 270811 | 45 | Ram Piston | 1 |
| 270631 | 9 | Roller | 1 | 270805 | 46 | Wheel Shaft | 1 |
| 270632 | 10 | Bushing | 1 | 270135 | ***47 | 8" Steering Wheel | 2 |
| Sold in Hdl. Base Kit | 11 | Axle | 1 | 270785 | | 7" Steering Wheel | 2 |
| Sold in Hdl. Base Kit | 12 | Ball | 1 | 270273 | 48 | Ball Bearing | 4 |
| Sold Only in Seal Kit | 13 | Packing | 1 | 270137 | 49 | Locking Ring | 2 |
| 270107 | **14 | Screw "Old Style" | 1 | 270314 | 50 | Cap | 2 |
| 270855 | **14 | Screw "New Style" | 1 | 270284 | 61 | Yoke | 1 |
| Sold Only in Seal Kit | 15 | Spring | 1 | 270158: Seal Kit | 5 | Dust Seal | 1 |
| 270109 | 16 | Valve Cone | 1 | | 7 | Cup Packing | 1 |
| 270110 | 17 | Valve Housing | 1 | | 13 | Packing | 1 |
| Sold Only in Seal Kit | 18 | "O" Ring | 1 | | 15 | Spring | 1 |
| Sold Only in Seal Kit | 19 | Ball | 1 | | 18 | "O" Ring | 1 |
| 270113 | 20 | Spring Pin | 2 | | 19 | Ball | 1 |
| 270114 | 21 | Axle | 1 | | 20 | Spring Pin | 2 |
| Sold Only in 270115 Set | 22 | Handle: Screw. Nut & Washer | 2 | | 27 | Pin | 1 |
| Sold in Hdl. Base Kit | 23 | Handle Base | 1 | | 31 | Spring | 1 |
| 270116 | 24 | Spring Pin | 1 | | 32 | "O" Ring | 1 |
| 270117 | 25 | Oil Plug | 1 | | 37 | Dust Seal | 1 |
| 270118 | 26 | Axle Pin | 1 | | 40 | "O" Ring | 1 |
| 270119 | 27 | Pin | 1 | | 43 | Cup Packing | 1 |
| 270120 | 28 | Locking Ring | 1 | | | Oil Plug "O" Ring | 1 |
| 270121 | 29 | Spring Pin | 1 | 270105: Handle Base Replacement Kit | 9 | Roller | 1 |
| 270122 | 30 | Thrust Bearing | 1 | | 10 | Bushing | 1 |
| Sold Only in Seal Kit | 31 | Spring | 1 | | 11 | Axle | 1 |
| Sold Only in Seal Kit | 32 | "O" Ring | 1 | | 12 | Ball | 1 |
| 270576 | 33 | Relief Cylinder | 1 | | 22 | Screw | 1 |
| 270125 | 34 | Release Piston | 1 | 270115: Handle Screw & Washer | 23 | Handle Base | 1 |
| 270126 | 35 | Lowering Arm | 1 | | 22 | Screw | 1 |
| 270127 | 36 | Table Bolt | 2 | | 41 | Washer | 1 |

*Items within kits specify quantity included per kit

**Item 14 "Old Style" for trucks received before 11/14/14 and
the "New Style" is for any trucks received after 11/14/14.

**** Item 47 for units Manufactured Before 01/2020 use (P/N 270135) 8" Steering Wheel.
For units Manufactured After 01/2020 use (P/N 270785) 7" Steering Wheel.