



## Adjustable Speed Conveyor Toaster



177GCT10

07/2020

*Please read the manual thoroughly prior to equipment set-up, operation and maintenance.*

## **Index**

Important Safety Information . . . . .	<b>3</b>
Circuit Diagram . . . . .	<b>4</b>
Discharge Assembly . . . . .	<b>5</b>
Before Using Your Conveyor Toaster. . . . .	<b>5</b>
Using Your Conveyor Toaster . . . . .	<b>6</b>
Cleaning & Maintenance . . . . .	<b>6</b>
Specifications. . . . .	<b>7</b>
Warranty . . . . .	<b>8</b>

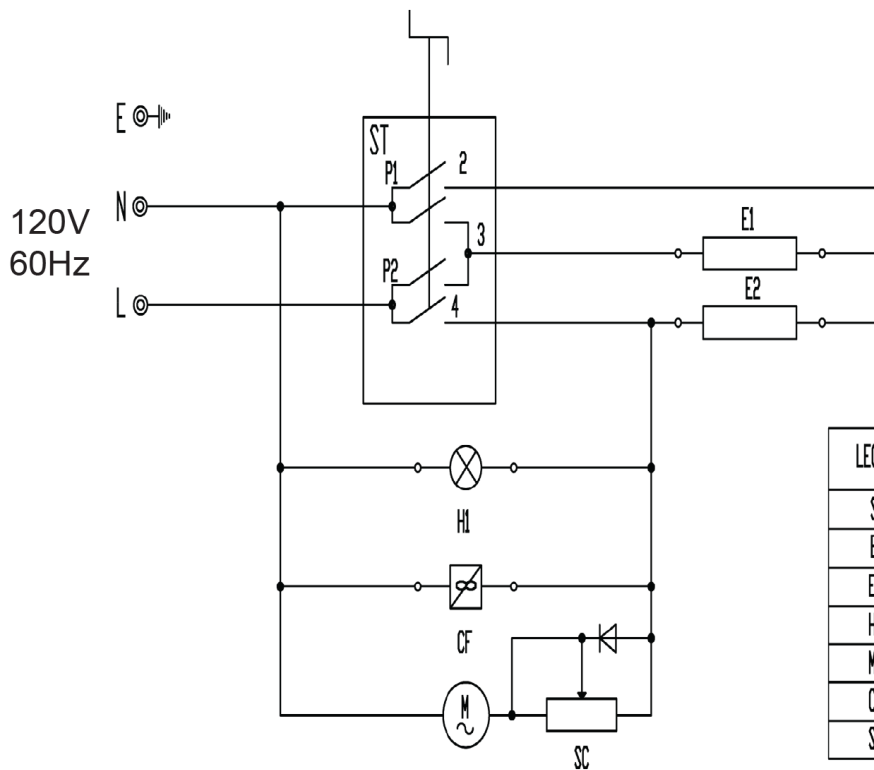
## Safety

**When using electrical appliances, basic safety precautions should always be followed, including the following:**

1. Read all instructions carefully and completely.
2. For commercial use only.
3. DO NOT touch hot surfaces.
4. Protect against electrical shock by keeping all cords, plugs, and other electrical components away from water or other liquids.
5. Unplug this unit when not in use and before cleaning.
6. Allow the unit to cool before putting on or taking off parts.
7. DO NOT operate this or any appliance with a damaged electrical cord or plug.
8. DO NOT operate this or any appliance after it has malfunctioned or has been damaged in any way.
9. DO NOT use outdoors.
10. DO NOT place on or near a hot gas or electric burner.
11. Attach plug to appliance first, then plug electrical cord into the wall outlet.
12. Disconnect the unit by removing the electrical plug from the wall outlet.
13. DO NOT use appliance for any application other than intended use.
14. DO NOT insert metal utensils or oversized foods into this unit, as they may cause a fire and heighten the risk of electrical shock.
15. DO NOT store any item on top of this unit when in operation.
16. DO NOT allow this oven to touch or to be covered by flammable material, such as curtains, draperies, walls, etc., when in operation.
17. DO NOT clean with metal scouring pads, as pieces can break off and touch electrical components, heightening the risk of electrical shock.
18. Never place materials such as paper, cardboard, plastic, etc. in this oven.
19. DO NOT cover interior of this unit with metal foil, as it may cause the oven to overheat.
20. Avoid scratching the surface or nicking the edges of this unit. If the oven is damaged or broken, contact customer service before use.
21. Turn off the appliance by removing the plug from the wall outlet.
22. Note that the use of accessories not recommended by the manufacturer may result in injury.
23. Children should be supervised to ensure that they DO NOT play with the oven.
24. This appliance is not intended for use by persons (including children) with reduced physical sensory or mental capabilities, or lack of experience and knowledge, unless a person responsible for their safety has given them supervision or instruction concerning use of the appliance.
25. When using the appliance in shops, snack bars, hotels etc., check the voltage and outlet to make sure the appliance is correctly connected with power.
26. Place unit on a flat surface that is well ventilated. The appliance must be supervised during operation. DO NOT leave appliance without powering off.

**NOTE: Save these instructions for future reference.**

## Circuit Diagram



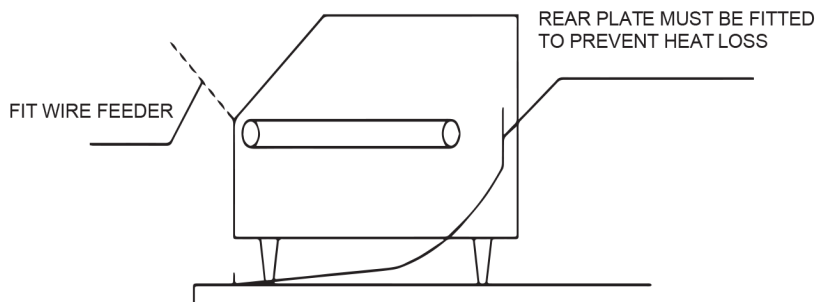
## WIRING DIAGRAM

MODEL : CONVEYOR TOASTER

LEGEND	DESCRIPTION
SW	STAGE SWITCH
E1	TOP ELEMENT - 1040W / 120V
E2	BOTTOM ELEMENT 710W / 120V
HL	CONTROL PILOT LIGHT 120V
M	CONVEYOR MOTOR 120V
CF	COOLING FAN 120V
SC	CONVEYOR SPEED CONTROL 120V

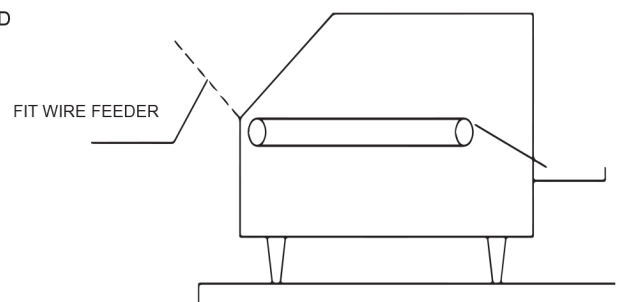
## Discharge Assembly

As detailed in the diagrams below, the unit can either be assembled with front or rear discharge depending on installation position and preference.



### FRONT DISCHARGE

1. Pull metal plate up to the closed position and latch. This will direct food to the bottom of the toaster.
2. Pick up the longer of the two chutes.
3. Slide the flanged end of the chute up underneath the toaster.
4. Rest the flanged end of the chute onto the interior ledge.



### REAR DISCHARGE

1. Push the metal plate down to the open position. This will direct food to the back of the toaster.
2. Loosen the two rear screws.
3. Pick up the smaller of the two chutes.
4. Slide the two keyholes on the chute behind the loosened screws. If the chute does not fit all the way down, loosen the screws more.
5. Tighten the screws to secure the chute to the toaster.

## Before Using Your Toaster

**Before cooking anything in your oven for the first time, please follow these simple instructions:**

1. This conveyor toaster has been designed to continuously produce toasted bread or buns. The desired toasted color of the product can be adjusted by changing the belt speed of the conveyor. Depending on installation position, the toasted product can be discharged to the front or rear of the unit.
2. Ensure the support feet are assembled to the unit before commencing operation.
3. Thoroughly clean as described in the cleaning section of this manual (page 6).
4. For best results, allow the unit to preheat for 20-25 minutes before use so that the correct operating temperature can be reached.

## Using Your Toaster

The unit has two controls.

### 1. **Speed/color control**

Determines the length of time the toast or product is in the heating chamber. The slower the speed, the longer the exposure and the darker the product.

### 2. **Heat control switch has 4 settings.**

**“OFF”** - In this position, the unit is off.

**“STANDBY”** - In this position, the conveyor belt will run and both top and bottom elements will operate at 25% capacity. This mode is designed to keep the unit warm in quiet periods to reduce start-up time and conserve energy.

**“BREAD”** - In this position, both top and bottom elements operate at full capacity. This is the ideal mode for toasting bread.

**“BUNS”** - In this position, only the top element operates at full capacity. This is the ideal setting for toasting one side only of a bun.

## Cleaning & Maintenance

**CAUTION: THIS APPLIANCE SHOULD NOT BE IMMERSSED IN WATER.**

**USE ONLY A DAMP CLOTH OR SPONGE DIPPED IN SOAPY WATER.**

**DO NOT USE STEEL WOOL AS IT WILL DAMAGE THE BRIGHT STAINLESS STEEL FINISH.**

### **EXTERIOR & CRUMB TRAY**

1. Unplug the power cord from the wall outlet.
2. Wait for the oven to cool.
3. Wipe off the unit with a dry cloth and wait at least half an hour before reconnecting to the power outlet.
4. Remove the crumb tray from the unit by pulling forward. Dispose of the crumbs and clean the tray with a damp cloth or sponge dipped in soapy water. Refit the tray before reusing the unit.

### **CONVEYOR BELT**

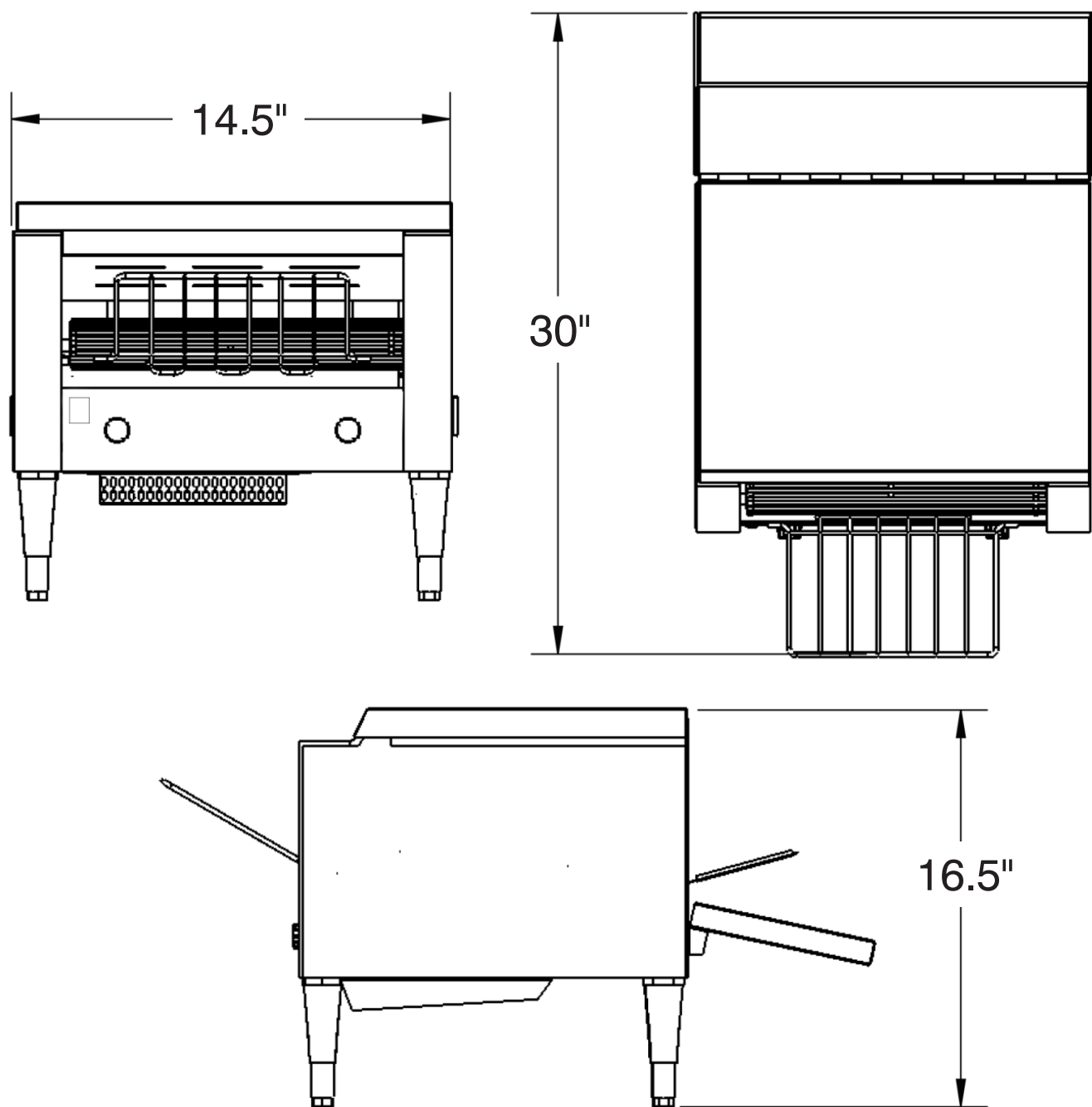
1. Turn off the toaster and allow the unit to cool down.
2. Turn the unit on and set to Standby Mode, adjust the belt to slow speed.
3. Using an abrasive pad, wipe the conveyor belt in a back and forth motion (ie: side to side) to remove baked-on product.
4. Finally, clean the belt with a damp cloth in the same manner described in number 3.



### **SUGGESTED CLEANER**

**Noble Chemical QuikSan Food Contact & Surface Sanitizer**

## Dimensions





## Equipment Limited Warranty

Galaxy warrants its equipment to be free from defects in material and workmanship for a period of 6 months. This is the sole and exclusive warranty made by Galaxy covering your Galaxy brand equipment. A claim under this warranty must be made within **6 months** from the **date of purchase** of the equipment. Only the equipment's original purchaser may make a claim under this warranty. Galaxy reserves the right to approve or deny the repair or replacement of any part or repair request. The warranty is not transferable. Galaxy Equipment installed in/on a food truck or trailer will be limited to a period of **30 days** from the original date of purchase.

### To Make a Warranty Claim:

For Warranty Inquiries contact the location where you purchased the product:

- **WebstaurantStore.com:** Contact [help@webstaurantstore.com](mailto:help@webstaurantstore.com). Please have your order number ready.
- **The Restaurant Store:** If you purchased this unit from your local store, please contact your store directly.
- **TheRestaurantStore.com:** Online purchases, call 717-392-7261. Please have your order number ready.

Failure to contact the designated location prior to obtaining equipment service may void your warranty.

Galaxy makes no other warranties, express or implied, statutory or otherwise, and **HEREBY DISCLAIMS ALL IMPLIED WARRANTIES, INCLUDING THE IMPLIED WARRANTIES OF MERCHANTABILITY AND OF FITNESS FOR A PARTICULAR PURPOSE.**

### This Limited Warranty does not cover:

- Equipment sold or used outside the Continental United States
- Use of unfiltered water (if applicable)
- Galaxy has the sole discretion on wearable parts not covered under warranty
- Equipment not purchased directly from an authorized dealer
- Equipment that has been altered, modified, or repaired by anyone other than an authorized service agency
- Equipment where the serial number plate has been removed or altered.
- Damage or failure due to improper installation, improper utility connection or supply, and issues resulting from improper ventilation or airflow.
- Defects and damage due to improper maintenance, wear and tear, misuse, abuse, vandalism, or Act of God.

Any action for breach of this warranty must be commenced within 6 months of the date on which the breach occurred. No modification of this warranty, or waiver of its terms, shall be effective unless approved in a writing signed by the parties. The laws of the Commonwealth of Pennsylvania shall govern this warranty and the parties' rights and duties under it. Galaxy shall not under any circumstances be liable for incidental or consequential damages of any kind, including but not limited to loss of profits.