

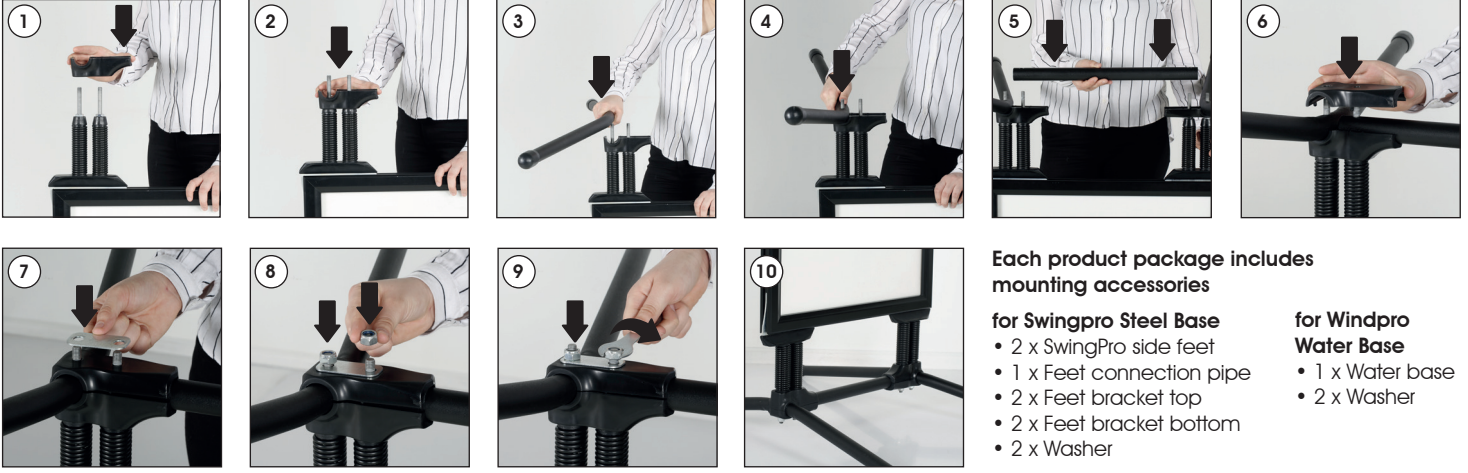
Installation Instructions

(1008623)

SLIDE-IN WINDPRO & SWINGPRO



Slide-in SwingPro Steel base



Each product package includes mounting accessories

for Swingpro Steel Base

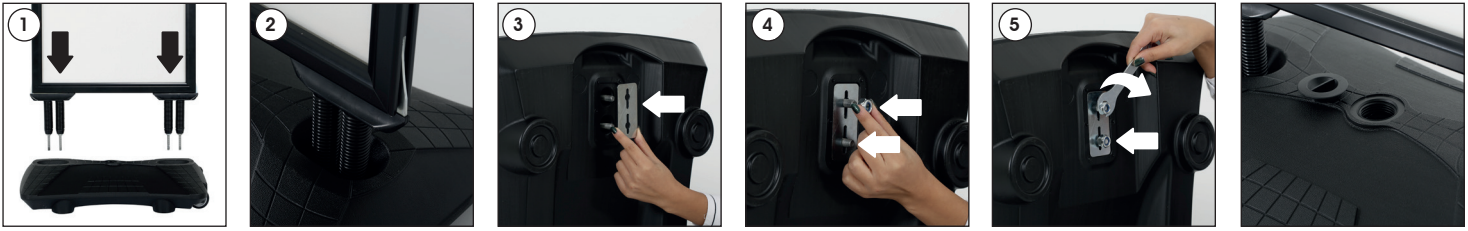
- 2 x SwingPro side feet
- 1 x Feet connection pipe
- 2 x Feet bracket top
- 2 x Feet bracket bottom
- 2 x Washer

for Windpro

Water Base

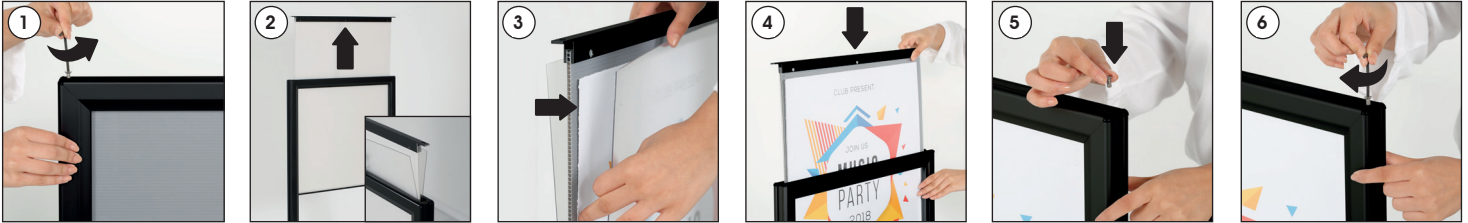
- 1 x Water base
- 2 x Washer

Slide-in WindPro Waterbase



You can fill in the base by water & close the cover cap.

Poster Change



Each product package includes mounting accessories

for Frame

- 1 x SwingPro & WindPro Slide-in Frame
- 1 x PP panel
- 2 x PET cover
- 1 x 3 Allen key
- 4 x Nut M10
- 1 x 17 spanner



WARNING !

- Please use the wrench enclosed and tighten carefully. When tighten too much, the base can breach.
- It is recommend to carry the product with the tool as shown (optional available), when the base is full with water.



- Please inform the order number on the product or on the carton (e.g. 1/110001394-460) to the place that you have made the purchase if any problem with the product occurs.
- Bitte teilen Sie bei jeglichen Problemen, die auf dem Artikel oder auf der Verpackung aufgeführte Auftragsnummer (z.B.: 1/110001394-460) Ihrem Händler mit.
- Lütfen ürünleki herhangi bir sorun için ürünün veya paketin üzerindeki sipariş numarasını (örnek: 1/110001394-460) satın aldığınız yere bildirin.
- All rights reserved. All pictures, figures and writings are secured internationally by copy-right law. Infringements will be sued by civil and legal law.
- Alle Rechte vorbehalten. Alle Bilder, Zeichnungen und Texte sind international urheberrechtlich geschützt. Etwaige Zuwiderhandlungen werden zivil-und strafrechtlich verfolgt.
- Tüm hakları saklıdır. Tüm resimlerin, şemaların ve yazıların kopya hakları uluslararası kanunlarla güvence altına alınmıştır. İhlali durumunda sivil ve hukuki yasa mercii tarafından dava edilecektir.