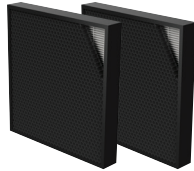


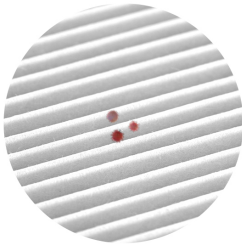
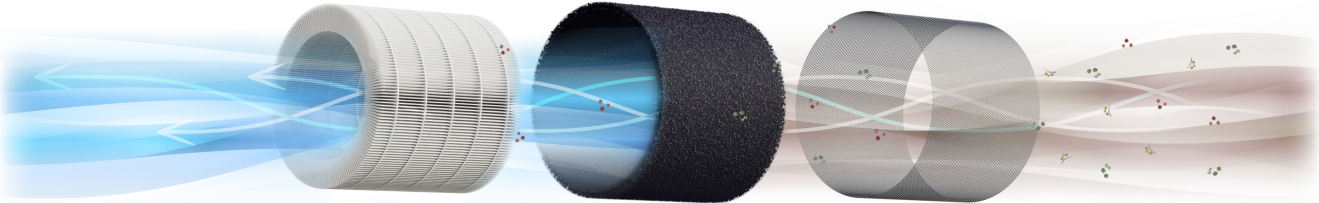
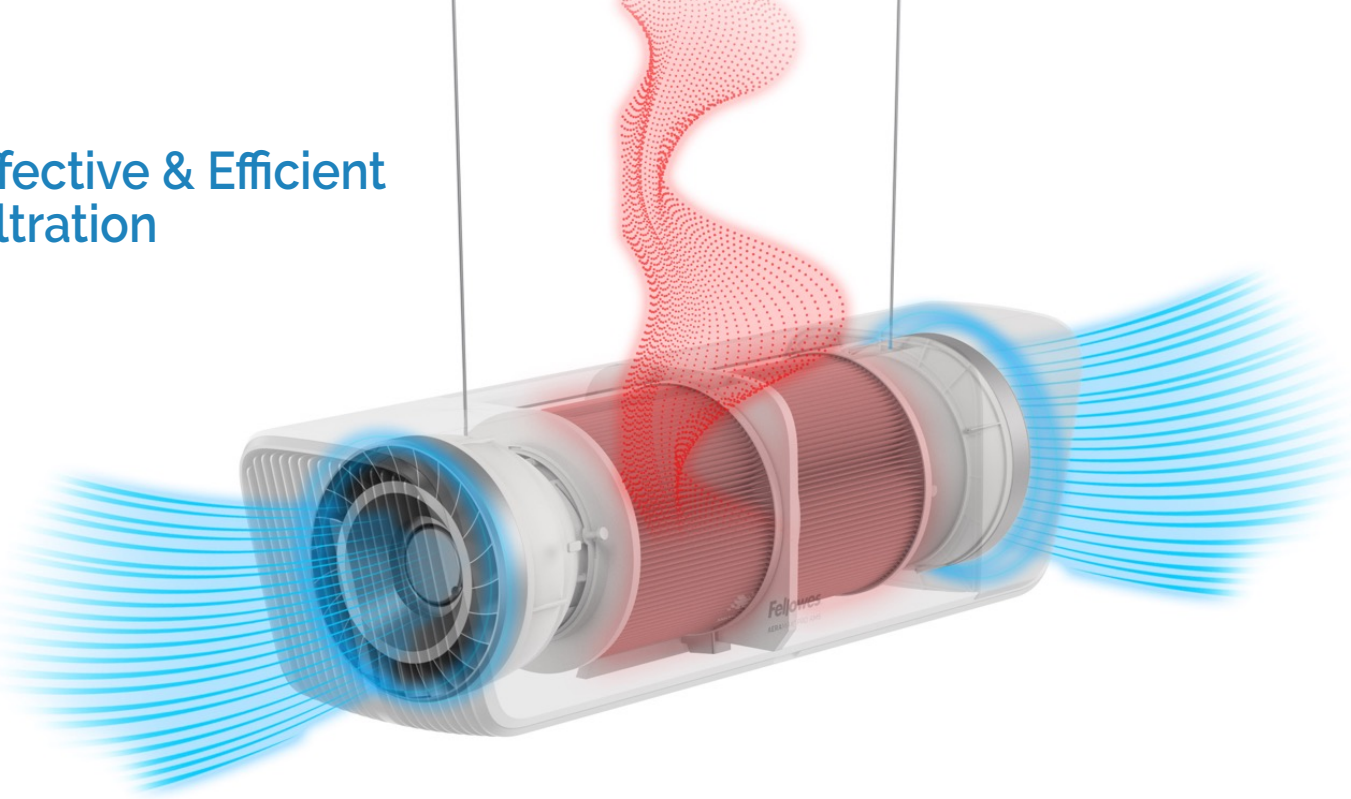
Specs		Array Ceiling AC2		Array Recess AR1			Array Recess AR2			Array Recess AR1 UVC			Array AW1 & AS1			Array AW2 & AS2			Array Signal	Array Lookout
Area Coverage (SQFT)		Ceiling Height (ft)		Ceiling Height (ft)			Ceiling Height (ft)			Ceiling Height (ft)			Ceiling Height (ft)			Ceiling Height (ft)			Ceiling Height (ft)	Ceiling Height (ft)
		10	12	8	10	12	8	10	12	8	10	12	8	10	12	8	10	12	—	—
eACH	1	4,290	3,575	2,250	1,800	1,500	4,500	3,600	3,000	900	720	600	1,800	1,440	1,200	3,000	2,440	2,000	—	—
	3	1,430	1,191	750	600	500	1,500	1,200	1,000	300	240	200	600	480	400	1,000	800	666	—	—
	5	858	715	450	360	300	900	720	600	180	144	120	360	288	240	600	480	400	—	—
Product code		W: 5889201 B: 5889202		5888601			5888901			5889501			5884801 (AW1) 5884201 (AS1)			5885101 (AW2) 5884501 (AS2)			5885401	5885901 (Wall) 5885801 (Stand)
Fan Speeds (CFM)		136, 186, 333, 504, 715		60, 80, 134, 201, 300			114, 153, 264, 391, 600			120			68, 90, 110, 140, 240			120, 150, 200, 260, 400			—	—
Sound pressure levels, each fan speed (dB)		29, 31, 43, 48, 56		24, 26, 33, 44, 50			26, 27, 36, 47, 54			43			AS1: 29, 34, 38, 44, 57 AW1: 28, 33, 38, 44, 56			AS2: 28, 34, 39, 45, 58 AW2: 27, 33, 37, 44, 58			—	—
Power Requirements (V/Hz/A)		AC120V/60Hz/1.2A		AC120V/60Hz/0.8A			AC120V/60Hz/1.5A			AC120V/60Hz/0.9A			AC120V/60Hz/0.9A			AC120V/60Hz/1.5A			AC120V/60Hz/1.0A	AC120V/60Hz/1.3A
Power Consumption (Watts)		11, 13, 24, 26, 120		7, 8, 13, 24, 62			9, 12, 23, 45, 120			77			6, 9, 13, 24, 96			10, 14, 23, 41, 152			36	36
EnviroSmart™ Technology (particulates (PM10, PM2.5), occupancy, temperature, humidity (rH), carbon dioxide (CO2), pressure, TVOCs, light and sound detection)		✓		✓			✓			—			✓			✓			Yes except for occupancy sensors	—
IoT Connectivity		LTE		LTE			LTE			LTE			LTE			LTE			LTE	LTE
Modes		Auto, Quiet, Manual		Auto, Quiet, Manual			Auto, Quiet, Manual			Manual - 1 Speed			Auto, Quiet, Manual			Auto, Quiet, Manual			—	—
Filter change indicator		Yes		Yes			Yes			Yes			Yes			Yes			—	—
Air Intake		Bottom, Top		Bottom			Bottom			Bottom			Bottom, Sides			Bottom, Sides			—	—
Air Outlet		Sides		Bottom			Bottom			Bottom			Top			Top			—	—
Warranty		5 Years		5 Years			5 Years			3 Years			5 Years			5 Years			3 Years	3 Years
Product Dimension (L x W x H) (in)		49 x 12.7 x 14.3		23.4 x 23.4 x 12.4			47.3 x 23.6 x 12.4			47.2 x 23.3 x 11			20.9 x 9.7 x 19.6 (AW1) 20.9 x 10.2 x 22.8 (AS1)			34.7 x 9.4 x 19.7 (AW2) 34.7 x 10.6 x 22.8 (AS2)			4.2 x 4.2 x 1.7	7.0 x 4.0 x 1.0
Weight (lbs)		47		40.3			76.1			62.6			20 (AW1), 25 (AS1)			35 (AW2), 40 (AS2)			0.88	1.86 (Wall) 1.17 (Stand)
Electrical Connection		Plug		Hardwire			Hardwire			Hardwire			Hardwire (AW1), Plug (AS1)			Hardwire (AW2), Plug (AS2)			Plug	Hardwire (Wall) Plug (Stand)
Certifications																				
UL507		✓		✓			✓			✓			✓			✓			—	—
CARB*		✓		✓			✓			✓			✓			✓			—	—
FCC		✓		✓			✓			—			✓			✓			✓	✓
EN1822M		✓		✓			✓			—			✓			✓				
Virus Effectiveness																				
H1N1		✓		✓			✓			✓			✓			✓				
Rhinovirus		✓		✓			✓			✓			✓			✓				
SARS-CoV-2*		✓		✓			✓			—			✓			✓				



Filter & UV Replacements						
Filter Type	3-in-1 360° (Pre-Filter, Carbon, H13 True HEPA)	3-in-1 360° (Pre-Filter, Carbon, H13 True HEPA)	3-in-1 360° (Pre-Filter, Carbon, H13 True HEPA)	UVC Bulb UVC Lamp Bundle**	Hybrid Filter (Carbon, H13 True HEPA)	Hybrid Filter (Carbon, H13 True HEPA)
Filter Code	5890102	5890101	5890102	(Bulb) 100016526 (Bundle) 100016527	9436902	9436902
Filter Rating	H13 True HEPA	H13 True HEPA	H13 True HEPA	—	H13 True HEPA	H13 True HEPA
Filter Efficiency	99.95% @ 0.1 microns	99.95% @ 0.1 microns	99.95% @ 0.1 microns	Up to 98.1% Single Pass Kill Rate***	99.95% @ 0.1 microns	99.95% @ 0.1 microns
Antimicrobial Coating	✓	✓	✓	—	✓	✓
Estimated Life	1 Year	1 Year	1 Year	1 Year/9000 Hours	1 Year	1 Year
Pack Size	2	1	2	1	1	2

\* Subject to final compliance certificate    \*\* Includes Pre-Filter  
\*\*\*Based on 98.1% Single Pass Reduction in Staphylococcus epidermidis bacteria. The term "Kill" is used to represent the inactivation of pathogens from the UV-C light

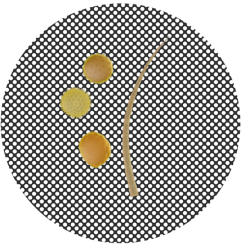
Effective & Efficient Filtration



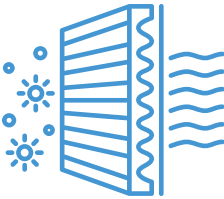
HEPA Filter



Carbon Filter



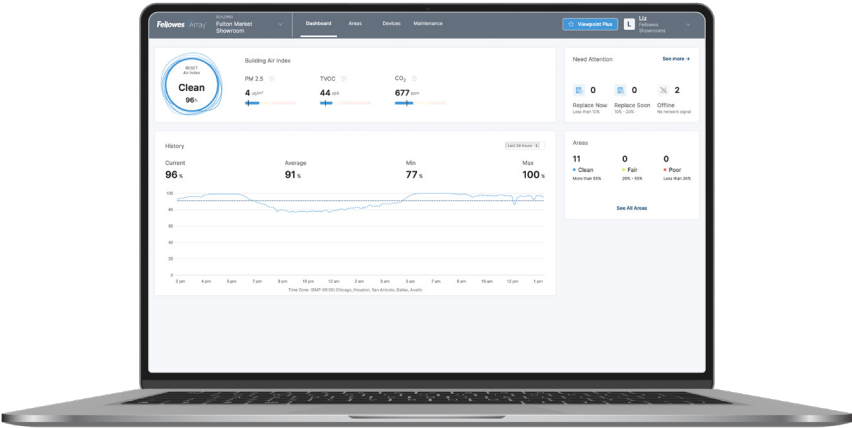
Pre Filter



Our 3-in-1 filter is 99.95% effective in capturing particles as small as 0.1 microns including viruses, allergens and germs. The mixed-flow fan design maximizes air flow while delivering quiet operation.

- Designed for demanding, continuous use, Fellowes filters feature a one year filter life
- UVC enabled units kill bacteria, viruses, VOCs, and other airborne contaminants

Array Monitoring & Real Time Data



Array™ Viewpoint

Data-Informed Decisions

Access to Array™ Viewpoint, designed to give users comprehensive visibility into their building's air quality, is included currently at no charge. All units connect through building-wide, secure LTE. Viewpoint continuously monitors and visualizes trends of the top air quality factors including particulates (PM10, PM2.5), occupancy, temperature, humidity (RH), carbon dioxide (CO2), pressure, and TVOCs,



Array™ Lookout

The Invisible, Now Visible

Lookout's display shows precise air quality status and filtration progress. Now, anyone can have confidence in their workspace's air quality.



Array™ Signal

Monitor Any Space

Signal provides remote monitoring for areas without a dedicated air purifier. Place in smaller offices, transitional areas, or anywhere else without proper ventilation or air monitoring.

RESET Air Class B IAQ Sensors	Accuracy
PM2.5 PM10	$\leq 100\mu\text{g}/\text{m}^3$ : $\pm 15\mu\text{g}/\text{m}^3$ $> 100\mu\text{g}/\text{m}^3$ : $\pm 15\%$
CO2	$\pm (30\text{ppm}+3\%)$
VOC/TVOC	$\pm 30\text{ppm}$
Temperature	0.2C
RH	1.80%