

**nemco**  
powered by **ASEPT**

## Portion Pump

All components must be cleaned before first use.  
All components are dishwasher safe.

According to food and safety regulations, most foods must be stored and/or served at certain temperatures or they could become hazardous. Check with local food and safety regulators for specific guidelines. Be aware of the product you are serving and the temperature the product is required to maintain.

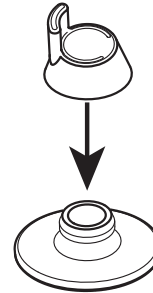
**IMPORTANT** Clean, rinse, sanitize, and dry parts at a minimum of every 24 hours. Always comply with local sanitation requirements.



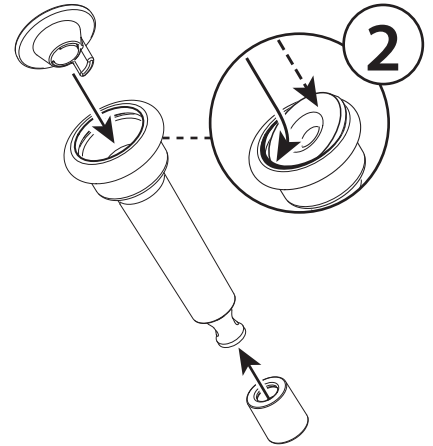
Take care when cleaning to prevent damage to nozzle opening(s).  
*Do not use sharp items.*

## ASSEMBLY

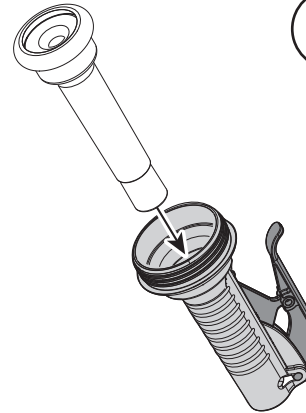
1



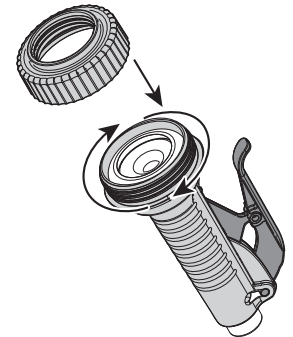
2



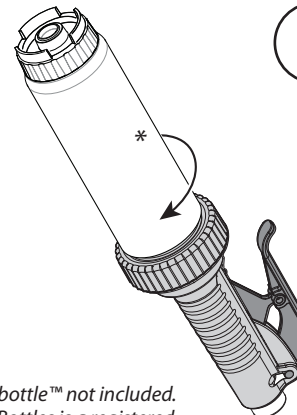
3



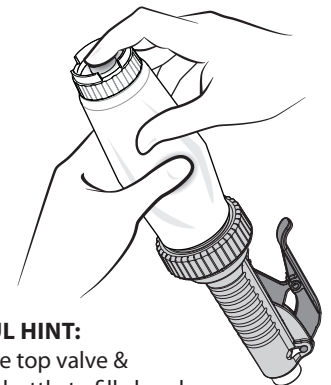
4



5



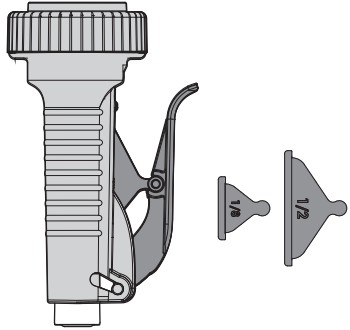
## PRIMING



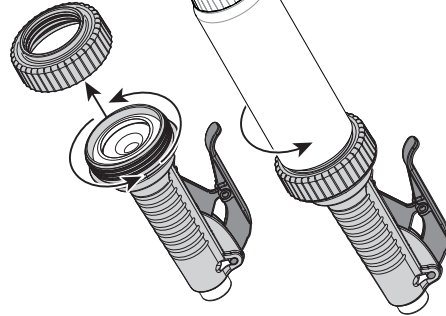
\* FIFO bottle™ not included.  
FIFO Bottles is a registered  
trademark of FIFO Innovations.

**HELPFUL HINT:**  
Cover the top valve &  
squeeze bottle to fill chamber.

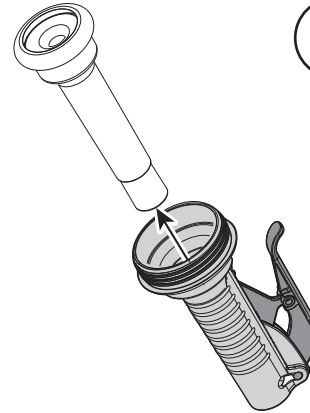
## CHANGING PORTION SIZE



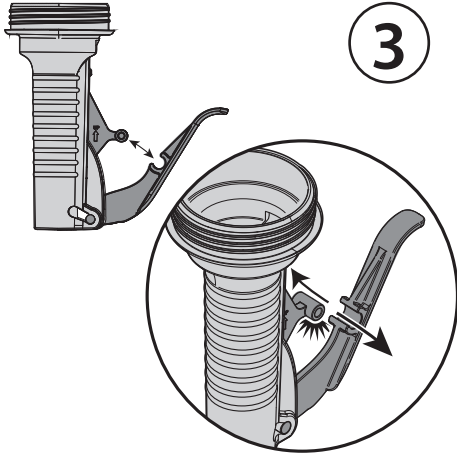
1



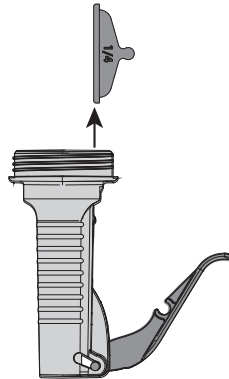
2



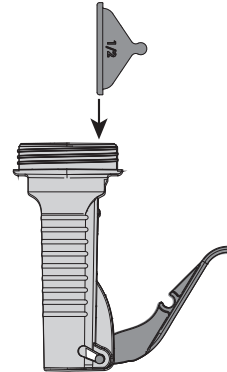
3



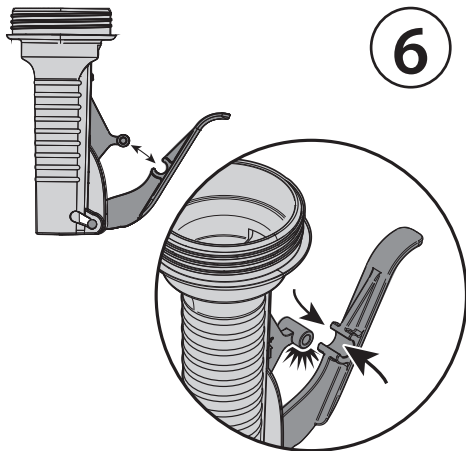
4



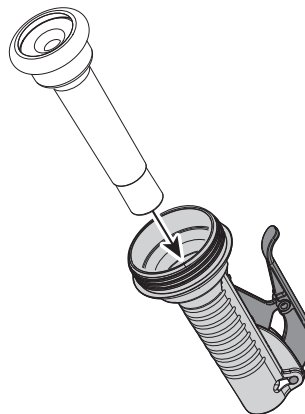
5



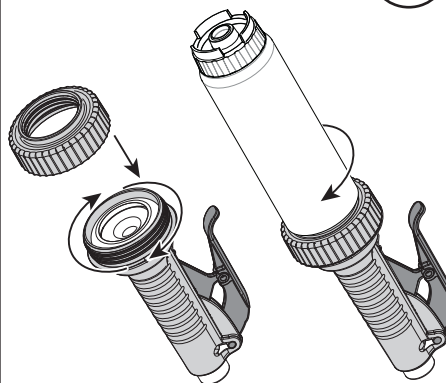
6



7



8



## PORTION SETTINGS

fl oz*	ml
1/8	3.75
1/6	5
1/4	7.5
1/3	10
1/2	15

\*Approximate portion based on  
**Standard products**  
(ketchup or mustard).

**Thick products** (mayo, honey)  
may yield 1/16 fl oz less per portion.

**Thin products** (hot sauce, soy sauce)  
may yield 1/16 fl oz more per portion.

**Asept International Inc.**  
900 Oakmont Ln, Suite 207,  
Westmont IL 60559, USA  
+1 (630) 441-5656 info.us@asept.com

**Asept International AB**  
Traktorvägen 17, SE-226 60  
Lund, Sweden +46 46 329 700  
info@asept.com

[www.asept.com](http://www.asept.com)

**nemco**  
powered by **ASEPT**

**For U.S. Sales & Support:**

**Nemco Food Equipment**

P.O. Box 305  
301 Meuse Argonne  
Hicksville, OH 43526  
800.782.6761

[www.nemcofoodequip.com](http://www.nemcofoodequip.com)