

**R450-100 Hershey®
Reese's® Peanut Butter Cups**



Issue Date:	6/11/2020	Revision:	F	
-------------	-----------	-----------	---	--

PRODUCT DESCRIPTION					

Varying sized pieces of chopped Reese's Peanut Butter Cups candy.

PHYSICAL ATTRIBUTES	
---------------------	--

Appearance:	Chopped Reese's Peanut Butter Cups							
Color:	Typical Reese's Peanut Butter Cups, brown with light brown center							
Flavor:	Chocolate with peanut butter							
Texture:	Chopped peanut butter pieces coated in milk chocolate							
Pack Size:	2 x 5 Lbs.							
Case Dimensions: L[depth]xWxH in.	7	14.5	6.2	Case Cube(ft ³):	0.3642	Pallet Conf. (TI / HI)	15	10

INGREDIENTS

MILK CHOCOLATE (SUGAR, COCOA BUTTER, CHOCOLATE, SKIM MILK, MILK FAT, LACTOSE, SOY LECITHIN, PGPR), PEANUTS, SUGAR, DEXTROSE, SALT, TBHQ AND CITRIC ACID, TO MAINTAIN FRESHNESS.

ALLERGENS:	CONTAINS: MILK, SOY AND PEANUT. MAY ALSO CONTAIN TRACES OF: TREE NUTS, EGG AND WHEAT.
-------------------	---

Cornstarch is used as a processing aid.

NUTRITIONAL INFORMATION	
NUTRIENT	Per 100g
CALORIES	527.52
TOTAL FAT (g)	29.24
SATURATED FAT (g)	10.46
TRANS FAT (g)	0.12
CHOLESTEROL (mg)	7.37
SODIUM (mg)	351.45
TOTAL CARBOHYDRATE (g)	55.54
DIETARY FIBER (g)	3.74
TOTAL SUGARS (g)	51.09
ADDED SUGARS (g)	47.38
PROTEIN (g)	10.88
VITAMIN D (mcg)	0.38
CALCIUM (mg)	92.24
IRON (mg)	2.85
POTASSIUM (mg)	360.29



Nutrition Facts

About 197 servings per container

Serving size	2 Tbsp (23g)
--------------	--------------

Amount per serving	
Calories	120

	% Daily Value*
Total Fat 7g	9%
Saturated Fat 2.5g	13%
<i>Trans</i> Fat 0g	
Cholesterol 0mg	0%
Sodium 80mg	3%
Total Carbohydrate 13g	5%
Dietary Fiber 1g	4%
Total Sugars 12g	
Includes 13g Added Sugars	22%
Protein 3g	

Vitamin D 0mcg	0%
Calcium 21mg	2%
Iron 1mg	6%
Potassium 83mg	2%

*The % Daily Value tells you how much a nutrient in a serving of food contributes to a daily diet. 2,000 calories a day is used for general nutrition advice.

Brand Name:	TR Toppers	Net Weight: (Lbs.)	10.00
Country of Origin	Mexico	Net Weight: (Kg.)	4.54
Case GTIN	00651844100038	Gross Weight: (Lbs.)	11.00
Kosher	Star-D	Gross Weight: (Kg.)	4.99
Metal Detection	1.5mm Ferrous	1.8mm Non-Ferrous	2.0mm SS316
		Density (lbs/gal)	5.82

MICROBIOLOGICAL ATTRIBUTES*

Attributes	Limits
Total Aerobic Plate Count (cfu/g)	<25,000
E. coli (/g)	Negative
Coliforms (cfu/g)	<10
Yeast and Mold (cfu/g)	<100
Salmonella (/375g)	Negative

*The above attributes are provided by the product manufacturer. Parameters are guaranteed attributes.

GMO STATEMENT

	Completely Produced with Genetic Engineering.
X	Partially Produced with Genetic Engineering.
	May be produced with Genetic Engineering.
	NOT Produced with Genetic Engineering.

STORAGE CONDITIONS	
Recommended Condition:	Best kept frozen (≤10° F).
Alternate Condition:	May be refrigerated (≤40°F).

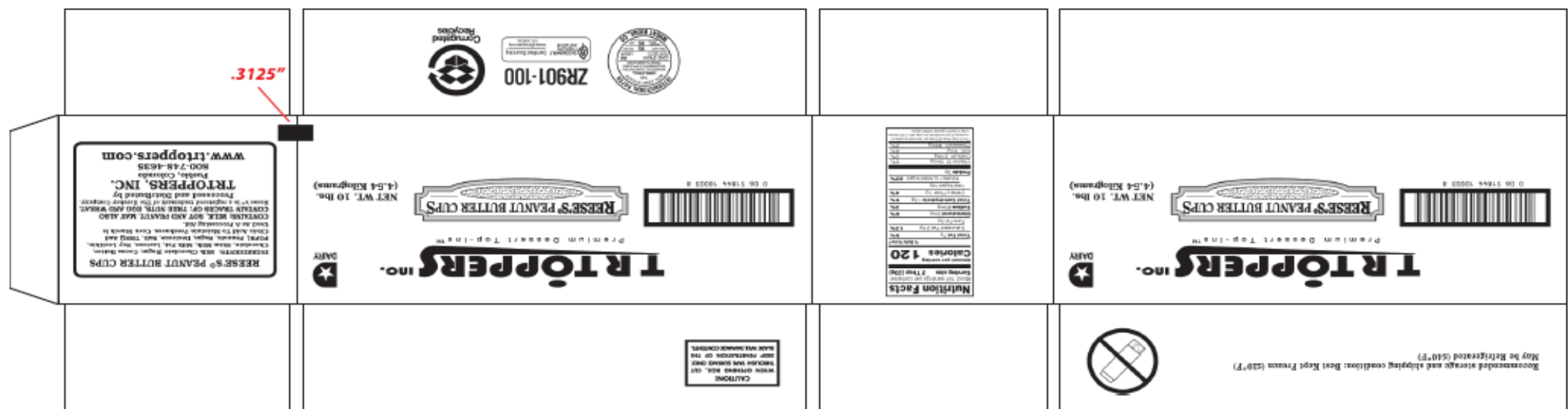
SHIPPING CONDITIONS	
Recommended Condition:	Best kept frozen (≤10°F).
Alternate Condition:	Temper in refrigeration temperature. Temper for 36 to 48 hours. Do Not temper in ambient condition. Do Not store at ambient conditions. Seal container after opening. Refrigerate promptly after opening.

ALLERGEN / SENSATIZER TABLE			
COMPONENT	PRESENT IN PRODUCT	PRESENT IN PRODUCTS MANUFACTURED ON THE SAME LINE	PRESENT IN THE SAME MANUFACTURING PLANT
PEANUTS AND DERIVATIVES	YES	YES	YES
TREE NUTS AND DERIVATIVES	MAY CONTAIN	YES	YES
EGG AND DERIVATIVES	MAY CONTAIN	YES	YES
MILK AND DERIVATIVES	YES	YES	YES
SOY AND DERIVATIVES	YES	YES	YES
WHEAT	MAY CONTAIN	YES	YES
FISH	NO	NO	NO
CRUSTACEAN SHELLFISH	NO	NO	NO
SULFITES > 10 ppm	NO	YES	YES
MUSTARD	NO	NO	NO
SESAME	NO	NO	NO
GLUTEN	MAY CONTAIN (WHEAT)		
ARTIFICIAL FLAVOR SOURCE	NONE		
FD&C ARTIFICIAL COLORS	NONE		

GRANULATION										
Sieve Size	3/4"	1/2"	1/4"	#8	#20	Pan				
Range (%)	<1	10 - 30	30 - 50	19 - 28	5 - 15	<7				

CODE FORMAT
Case Code - Left Side: Julian Date, Time, R450-100, PCO, BEST BY MM YYYY
Case Code - Right Side: Julian Date, Time, R450-100, PCO, BEST BY MM YYYY
Pallet Markings: JJJY, Pallet #, R450-100
EXAMPLE: 25811 15:32 R450-100 BEST BY MM YYYY JJJ = Production Julian Date 258 = September 15; Y = Last Digit of Year 1 = 2011; L = Line (Numeric) 1 = Line 1; Time: HH:MM 15:32 = 3:32 p.m. Product Code = (e.g. R450-100)

LABEL / CASE GRAPHICS

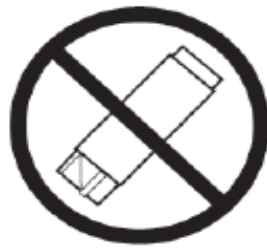


TR TOPPERS INC.
Premium Dessert Top-Ins™



NET WT. 10 lbs.
(4.54 Kilograms)

Recommended storage and shipping condition: Best Kept Frozen (≤10°F)
May be Refrigerated (≤40°F)



Nutrition Facts	
About 197 servings per container	
Serving size 2 Tbsp (23g)	
Amount per serving	
Calories 120	
% Daily Value*	
Total Fat 7g	9%
Saturated Fat 2.5g	13%
Trans Fat 0g	
Cholesterol 0mg	0%
Sodium 80mg	3%
Total Carbohydrate 13g	5%
Dietary Fiber 1g	4%
Total Sugars 12g	
Includes 11g Added Sugars	22%
Protein 3g	
Vitamin D 0mcg	0%
Calcium 21mg	2%
Iron 1mg	6%
Potassium 83mg	2%
*The % Daily Value (DV) tells you how much is in a serving of food compared to a diet of 2,000 calories a day. It is used for general nutrition advice.	

