



1400 N. Cleveland Ave., Sioux Falls, SD 57103



800.456.0532

p 605.334.5332



f 605.334.1024

www.grandprairiefoods.com

Written By: Jennifer Winge

Date: 12/17/19

## 263441 Sausage, Egg & Cheese Croissant

Document No.: 235.19.351.06

Supersedes: 03/29/23

Approved By: Kristine Nelsen

Approval Date: 09/15/23

Page 1 of 3

**Product Name:** Sausage, Egg & Cheese Croissant  
**Technical Name:** Pork Sausage, Scrambled Egg and Cheddar Cheese  
on a Croissant Sandwich  
**Brand:** Grand Prairie Foods, Inc.  
**Item Code:** 263441  
**Other Code:** Not Applicable  
**GTIN:** 10817058012940  
**Package UPC:** 817058012943  
**USDA Est. #:** N/A

### FORMULATION INFORMATION

**Ingredient Statement:** Croissant (Enriched Flour (Wheat Flour, Malted Barley Flour, Niacin, Reduced Iron, Thiamin Mononitrate, Riboflavin, Folic Acid), Water, Margarine (Palm Oil, Water, Soybean Oil, Sugar, Soy Lecithin, Mono-and Diglycerides, Potassium Sorbate (preservative), Citric Acid (preservative) Natural Flavor, Beta-Carotene (Color), Vitamin A Palmitate), Sugar, Yeast, Contains 2% or less of the following: Whey, Salt, Modified Corn Starch, Calcium Propionate (preservative), Natural & Artificial Flavors, Calcium Sulfate, Ascorbic Acid, Enzymes), Fully Cooked All Natural Pork Sausage Patty (Pork, Water, Salt, Spices, Dextrose, Sugar), Egg Patty (Whole Eggs, Water, Dry Whole Milk, Soybean Oil, Salt, Xanthan Gum, Citric Acid), Processed Cheddar Cheese (Cultured Milk, Water, Cream, Sodium Phosphates, Salt, Sorbic Acid (Preservatives), Vegetable Color (Annatto and Paprika Extract), Enzymes).

**Allergen Statement:** Egg, Milk, Soy, Wheat

Contains a Bioengineered Food Ingredient

### Nutrition Facts

1 serving	
<b>Serving size</b>	<b>(149g)</b>
<b>Amount per serving</b>	
<b>Calories</b>	<b>450</b>
	<b>% Daily Value*</b>
<b>Total Fat</b> 32g	<b>41%</b>
Saturated Fat 13g	<b>65%</b>
Trans Fat 0g	
<b>Cholesterol</b> 145mg	<b>48%</b>
<b>Sodium</b> 790mg	<b>34%</b>
<b>Total Carbohydrate</b> 26g	<b>9%</b>
Dietary Fiber 1g	<b>4%</b>
Total Sugars 4g	
Includes 4g Added Sugars	<b>8%</b>
<b>Protein</b> 15g	
Vitamin D 1mcg	<b>6%</b>
Calcium 202mg	<b>15%</b>
Iron 2mg	<b>10%</b>
Potassium 189mg	<b>4%</b>

\*The % Daily Value tells you how much a nutrient in a serving of food contributes to a daily diet. 2,000 calories a day is used for general nutrition advice.



## 263441 Sausage, Egg & Cheese Croissant

Document No.: 235.19.351.05		Supersedes: 03/29/23
Approved By: Quincy Godfry	Approval Date: 09/15/23	Page 2 of 3

### PHYSICAL CHARACTERISTICS

<b>Color/Appearance:</b>	Golden-brown bakery style croissant sandwich with browned sausage patty, yellow scrambled egg patty and orange-yellow sliced cheese.
<b>Flavor:</b>	Typical of bakery croissant with pork sausage, scrambled egg patty and cheddar cheese sandwich.
<b>Texture:</b>	Typical of a croissant with sausage, scrambled egg and cheddar cheese sandwich. Croissants should not be too hard (over-baked) or doughy (under-baked). Sausage and egg patties should not be chewy or mushy but have a pleasant texture.
<b>Aroma:</b>	No off odors or aromas.
<b>Size:</b>	5.0 oz. (142 g)
<b>Foreign Material:</b>	The product will pass through a metal detector(s) during the packaging process.

### PACKAGING

<b>Units/Case:</b>	24 sandwiches/cs
<b>Package Type:</b>	Sealed in a polyethylene package with front and back retail label.
<b>Case Weight:</b>	7.5 lbs.
<b>Case Dimensions:</b>	Length: 16.846" Width: 11.346" Height: 6.504"
<b>Cube:</b>	0.72 ft <sup>3</sup>
<b>Palletization:</b>	9 case/layer - 10 layers/pallet
<b>Cases Per Pallet:</b>	90

### DATE CODE INFORMATION

<b>Product Example:</b>	February 8, 2023 production date = 23039	23 = Year 2023 - 039 = Julian date
<b>Product Frozen Best By Date:</b>	FEB 08 24	
<b>Master Case Example:</b>	February 8, 2023 production date = 23039	23 = Year 2023 - 039 = Julian date

### STORAGE INFORMATION

<b>Plant Storage:</b>	Stored at 0°F or below until shipping.
	<b>Frozen</b> – Product must be stored a 0°F or below. To ensure optimum flavor.
	<b>Refrigerated</b> – Product must be stored at 32-40°F. Once the product is opened the shelf-life becomes dependent on the storage and handling practices.

### RECOMMENDED HEATING INSTRUCTIONS

**Refrigerated (Thawed):** Open one end of the package, and microwave for 45 seconds on HIGH or until the internal temperature is 165°F degrees. Microwave cooking times may vary, adjust accordingly.

**Frozen:** Open one end of the package, and microwave for 1 minute 30 seconds on HIGH or until the internal temperature is 165°F degrees. Microwave cooking times may vary, adjust accordingly.

### PRODUCT CHANGES

Any changes to packaging materials, appearance, or information contained therein shall be submitted in advance to Buyer.

Written By: Jennifer Winge

Date: 12/17/19

## 263441 Sausage, Egg & Cheese Croissant

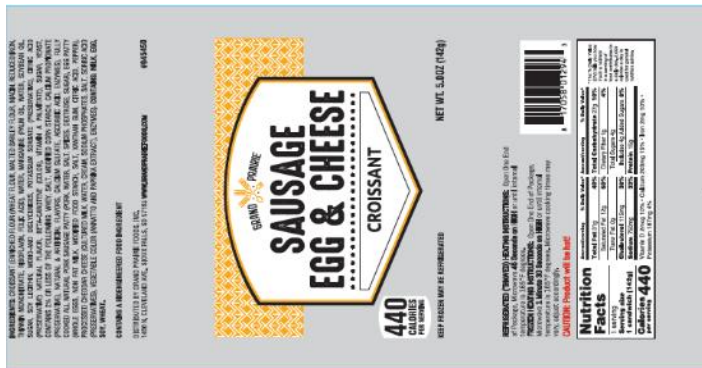
Document No.: 235.19.351.05

Supersedes: 03/29/23

Approved By: Quincy Godfry

Approval Date: 09/15/23

Page 3 of 3



# 263441

**KEEP FROZEN**

## Sausage, Egg & Cheese Croissant



1 081705 801294 0

**24 sandwiches/cs**

DISTRIBUTED BY:  
GRAND PRAIRIE FOODS, INC.  
SIOUX FALLS, SD 57103

### NET WT. 7.8 LBS. (3.5 KG)