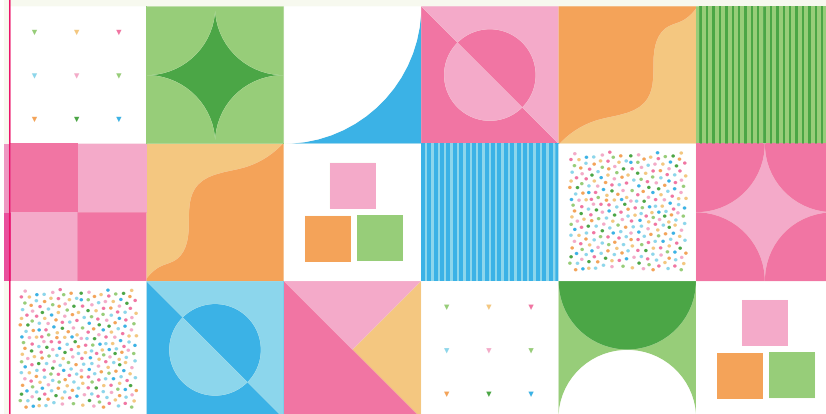


# PASTEL RAINBOW SANDING SUGAR

ADOURNE<sup>®</sup>  
EXPRESSIONS



NET WEIGHT  
10 LBS  
(4.54 KG)

COLOR



SHAPE



PRODUCT OF COSTA RICA

MANUFACTURED FOR  
CLARK CORE SERVICES, LLC,  
LANCASTER, PA 17602

STORE IN A COOL DRY PLACE  
BETWEEN 50-70°F

## Nutrition Facts

1134 servings per container

**Serving Size** 1 tsp (4g)

**Amount per serving**

**Calories** 15

**% Daily Value\***

**Total Fat** 0g 0%

Saturated Fat 0g 0%

Trans Fat 0g

**Cholesterol** 0mg 0%

**Sodium** 0mg 0%

**Total Carbohydrate** 4g 1%

Dietary Fiber 0g 0%

Total Sugars 4g

Includes 4g Added Sugars 8%

**Protein** 0g 0%

Vitamin D 0mcg 0%

Calcium 0mg 0%

Iron 0mg 0%

Potassium 0mg 0%

The % Daily Value (DV) tells you how much a nutrient in a serving of food contributes to a daily diet. 2,000 calories a day is used for general nutrition advice.

**INGREDIENTS:** Sugar, Confectioners Glaze, Carnauba Wax, FD&C (Red #3, Blue #1, Yellow #5, Yellow #6, Red #40)

#711SSPASTEL

